

# **NEC ESMPRO Manager Monitoring Tool Installation Guide**

**Chapter 1 General Description**

**Chapter 2 Installation**

**Chapter 3 Uninstallation**

**Chapter 4 Operation**

**Chapter 5 Appendix**

---

---

# Contents

---

---

Contents .....	2
Conventions used in this document.....	3
Notations used in the text.....	3
Abbreviations of operating systems .....	4
Trademarks.....	5
Warnings and additions to this document.....	6
Latest editions .....	6
<b>Chapter1</b> General Description .....	7
1. Introduction .....	8
2. About download of latest this tool.....	9
3. System requirements .....	10
3.1 Installation requirements of this tool.....	10
3.2 NEC ESMPRO Manager supported by this tool.....	11
3.3 Requirements for connection between this tool and Monitoring NEC ESMPRO Manager.....	11
3.4 Notes .....	12
<b>Chapter2</b> Installation.....	13
1. Before installation .....	14
2. Installation.....	15
2.1 Installation procedure.....	15
2.2 Notes on installation.....	17
<b>Chapter3</b> Uninstallation.....	18
1. Uninstallation.....	19
1.1 Uninstallation procedure.....	19
1.2 Notes on uninstallation .....	21
<b>Chapter4</b> Operation.....	22
1. How to check the status of registered target.....	23
1.1 Status Screen.....	23
1.2 How to open Status Screen .....	24
2. How to add the new monitoring target.....	25
3. How to edit the registered target.....	27
4. How to delete the registered target.....	29
5. Other operations .....	31
5.1 How to open online help.....	31
<b>Chapter5</b> Appendix.....	32
About External Libraries which this product uses.....	32
The relationship between notification area icons of this tool and NEC ESMPRO Manager Status.....	33
The relationship between status icons of this tool and NEC ESMPRO Manager Status.....	34

---

---

## Conventions used in this document

---

---

---

### Notations used in the text

---

Three types of notations are used in this document. These notations have the following meanings.

<b>Important</b>	Indicates critical items that must be followed when operating software.
<b>Note</b>	Indicates items that must be confirmed when operating software.
<b>Tips</b>	Indicates information that is helpful to keep in mind.

---

## Abbreviations of operating systems

---

Windows Operating Systems (OS) are referred to as follows.

Notations in this document	Official names of Windows
Windows 10	Windows 10 Pro 64-bit Edition
	Windows 10 Pro 32-bit Edition
	Windows 10 Enterprise 64-bit Edition
	Windows 10 Enterprise 32-bit Edition
Windows 8.1	Windows 8.1 Pro 64-bit Edition
	Windows 8.1 Pro 32-bit Edition
	Windows 8.1 Enterprise 64-bit Edition
	Windows 8.1 Enterprise 32-bit Edition
Windows 7	Windows 7 Professional 64-bit Edition
	Windows 7 Professional 32-bit Edition
	Windows 7 Enterprise 64-bit Edition
	Windows 7 Enterprise 32-bit Edition

---

---

## Trademarks

---

---

Windows is registered trademarks or trademarks of Microsoft Corporation in the United States and other countries. All other product, brand, or trade names used in this publication are the trademarks or registered trademarks of their respective trademark owners.

---

---

## Warnings and additions to this document

---

---

1. Unauthorized reproduction of the contents of this document, in part or in its entirety, is prohibited.
2. This document is subject to change at any time without notice.
3. Do not make copies or alter the document content without permission from NEC Corporation.
4. If you have any concerns, or discover errors or omissions in this document, contact your sales representative.
5. Regardless of article 4, NEC Corporation assumes no responsibility for effects resulting from your operations.
6. The sample values used in this document are not the actual values.

**Keep this document for future reference.**

---

---

## Latest editions

---

---

This document was created based on the information available at the time of its creation. The screen images, messages and procedures are subject to change without notice. Substitute as appropriate when content has been modified.

---

---

## General Description

This chapter describes general description of this tool.

### **1. Introduction.**

### **2. About downloading latest NEC ESMPRO Monitoring Tool.**

Describes downloading latest NEC ESMPRO Monitoring Tool.

### **3. System requirements.**

Describes the necessary environment of NEC ESMPRO Manager Monitoring Tool.

---

# 1. Introduction

---

Read this document so as to gain an adequate understanding of the contents.

The contents in this document are intended for users who fully understand features and operations of OS related to this utility.

If you want to know operations of OS, or if there is any unclear point, see the online help of each OS.

NEC ESMPRO Manager Monitoring Tool is a software designed for notifying status change of NEC ESMPRO Manager without login from the web browser.

This tool has the following features.

- **Server Monitoring by using multiple NEC ESMPRO Manager will be easier.**

When you want to check status of multiple NEC ESMPRO Manager, you have to login all multiple NEC ESMPRO Manager from web browser.

But you can check all status of multiple NEC ESMPRO Manager by using this tool at once.

- **Status monitoring of server by using NEC ESMPRO Manager will be easier.**

Current system of NEC ESMPRO Manager have to open web browser for server status monitoring. But by using this tool, you can monitor server status in the notification area without open web browser by using this tool.



---

## **2. About download of latest this tool**

---

See the following URL for NEC ESMPRO Monitoring Tool information. You can download the latest version of NEC ESMPRO Monitoring Tool from URL.

<http://www.58support.nec.co.jp/global/download/index.html>

---

## 3. System requirements

---

NEC ESMPRO Manager Monitoring Tool requires the following hardware and software:

---

### 3.1 Installation requirements of this tool

---

- **Hardware**

- Machine Acomputer on which OS supported by NEC ESMPRO Manager Monitoring Tool can be installed
- CPU Core2 Duo 1.80GHz or higher, or equivalent compatible processor is recommended.
- Memory Memory required for running OS plus 100MB or more (500MB or more is recommended.)
- Free hard disk space 100MB or more

- **Software**

- OS Windows 10  
Windows 8.1  
Windows 7 (up to Service Pack1)
- Web browser Web browser is compliant with supported browser of monitoring NEC ESMPRO Manager.

---

## 3.2 NEC ESMPRO Manager supported by this tool

---

- **NEC ESMPRO Manager**

This tool supports following NEC ESMPRO Manager.

- NEC ESMPRO Manager Ver6.17 or later.

**Note**

This tool does not support before NEC ESMPRO Manager Ver6.17.  
Please update NEC ESMPRO Manager to Ver6.17 or later

- **Management limited number**

The number of NEC ESMPRO Managers that can be monitored with this tool are as follows.

- 20

**Note**

This tool cannot monitor more than 20 NEC ESMPRO Manager.  
If you want to add new monitoring target, please delete current monitoring target.

---

## 3.3 Requirements for connection between this tool and Monitoring NEC ESMPRO Manager

---

This tool uses following Interface for connection with Monitoring NEC ESMPRO Manager.

- TCP/IP Network

**Note**

This tool and Monitoring NEC ESMPRO Manager must be on the same network.  
This tool cannot connect with NEC ESMPRO Manager on other network.

---

## 3.4 Notes

---

### ◆ Preparation for communication between this tool and NEC ESMPRO Manager

The setting of machine which NEC ESMPRO Manager is installed must be changed for communicating with this tool and NEC ESMPRO Manager. The procedure is shown below.

#### 1. Release the port of machine which NEC ESMPRO Manager is installed.

The port which NEC ESMPRO Manager is installed must be released for communicating with this tool and NEC ESMPRO Manager. Please release the port referring to the following documents.

>> "NEC ESMPRO Manager Ver. 6 Installation Guide – Chapter4 Appendix – 2.Port numbers / Protocols"

>> [Web Client <->PC for Management]

#### 2. Edit the access control setting of NEC ESMPRO Manager.

NEC ESMPRO Manager has the access control function. NEC ESMPRO Manager can be accessed only from the local Web browser with the default setting. Therefore, please add the IP address of machine which NEC ESMPRO Manager is installed as following document.

>> "NEC ESMPRO Manager Ver. 6 Installation Guide – Chapter2 Installation – 3.After Installation"

---

---

## Installation

This chapter describes installation of this tool.

### **1. Before installation.**

Describes necessary setting before installation.

### **2. Installation.**

Describes installation procedure of this tool.

### **3. After installation.**

Describes necessary setting after installation

---

# 1. Before installation

---

Be sure to read this page before installing this tool.

## ◆ Confirming the disk space required for operation.

Prepare sufficient free space in the folder you specified at installation.

By default, the installation folder is "%ESMMT" on the system drive.

Please refer to "3.1 Installation requirements of this tool" for the necessary disk space.

## ◆ Place of installation.

When this tool is installed in an already existing folder, this tool may not operate unless the access permissions required for this tool operation have been set.

In this cases, please add the suitable access permissions to Installed folder.

### Important

When this tool is installed in "C:\Program Files" or "C:\Program Files (x86)" etc., This tool may not work properly. In this cases, please add the suitable access permissions to following folder.  
<<Installed folder >>%ESMMT

---

## 2. Installation

---

This page describes installation of this tool.

Be sure to read "Before Installation" and install this tool.

---

### 2.1 Installation procedure

---

1. **Sign-in (Log on) to the system with the built-in Administrator (or an account having administrative privilege).**

2. **Save the downloaded file in a folder of your choice, and unzip it.**

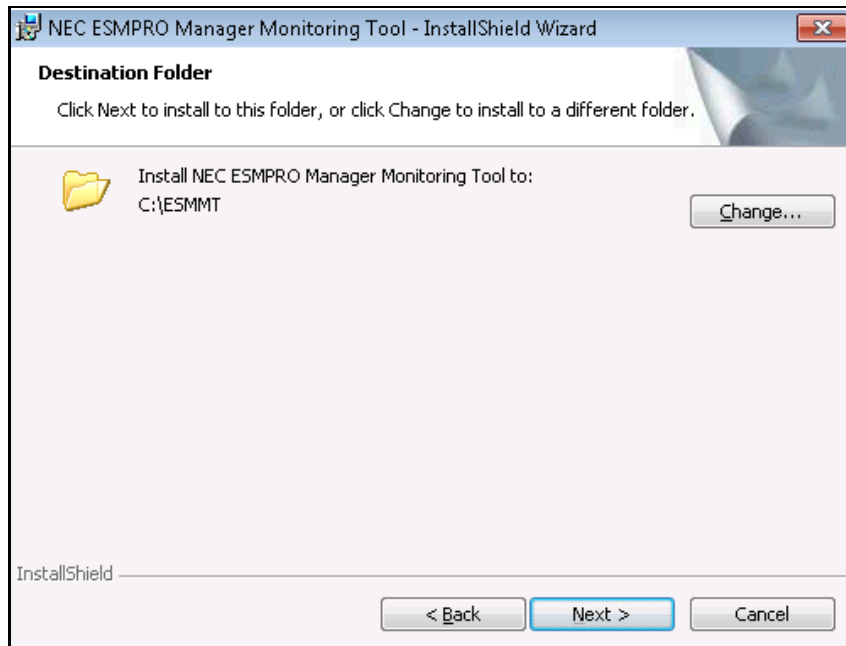
**Important**

If you store the setup program in a folder that is too deep in the hierarchy,  
The program may not be run correctly.

3. **Run the setup program "¥ESMMT\_¥setup.exe".**

#### 4. Select the installation destination.

Select the installation target folder, and then click [Next].



#### 5. Reboot OS after installation is completed.



---

## 2.2 Notes on installation

---

### ◆ Please reboot OS after installation is completed.

This tool will start automatically by rebooting OS.

Whether this tool is running or not can be judged by whether or not the following icon is displayed on the notification area.



**Tips**

Displayed icons will be changed by monitoring target status.

### ◆ This tool does not start after OS rebooting.

If this tool does not start after OS rebooting, the following case can be considered.

In the following case, this tool will start by adding the suitable access permissions to installed folder.

>> This tool have been installed in Existing folder of system drive (C:¥Program Files or

>> C:¥Program Files (x86) etc.), and User account is not built-in Administrator.

---

---

## Uninstallation

This chapter describes uninstallation of this tool.

### **1. Uninstallation.**

Describes uninstallation procedure of this tool.

---

---

# 1. Uninstallation

---

---

This page describes how to uninstall this tool.

---

## 1.1 Uninstallation procedure

---

**1. Sign-in (Log on) to the system with the built-in Administrator (or an account having administrative privilege).**

**2. Exit all running applications.**

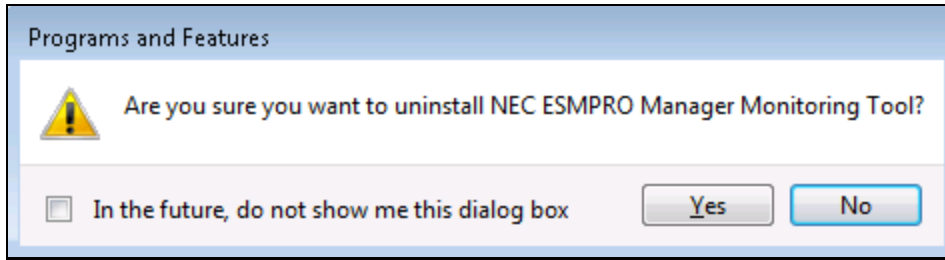
**3. Perform uninstallation.**

Startup [Programs and Features] (or [Add or Remove Programs]) from [Control Panel].

Select NEC ESMPRO Manager Monitoring Tool from the list of the installed programs to remove it.

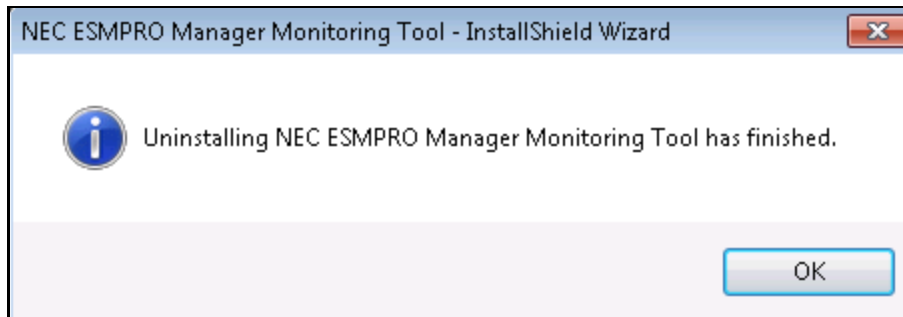
#### 4. Confirmation for uninstallation.

Confirm that any applications related to NEC ESMPRO Manager Monitoring Tool are not running, and click [Yes]. The selected features will be uninstalled.



#### 5. The uninstallation completes.

Click [OK] and then restart OS (the system will not automatically restart.).



**Note** | The displayed messages vary depending on the environment.

---

## 1.2 Notes on uninstallation

---

◆ **Reboot OS after uninstallation.**

Please reboot OS after this tool uninstallation.

This chapter describes basic operation of this tool

For detailed operations and other operations, refer to the online help of this tool.

### **1. How to check the status of registered target.**

This chapter describes how to check the status of registered target.

### **2. How to add the new monitoring target.**

This chapter describes how to add the new monitoring target.

### **3. How to edit the registered target.**

This chapter describes how to edit the registered target.

### **4. How to delete the registered target.**

This chapter describes how to delete the registered target

### **5. Other operations.**

This chapter describes other operations.

#### **Tips**

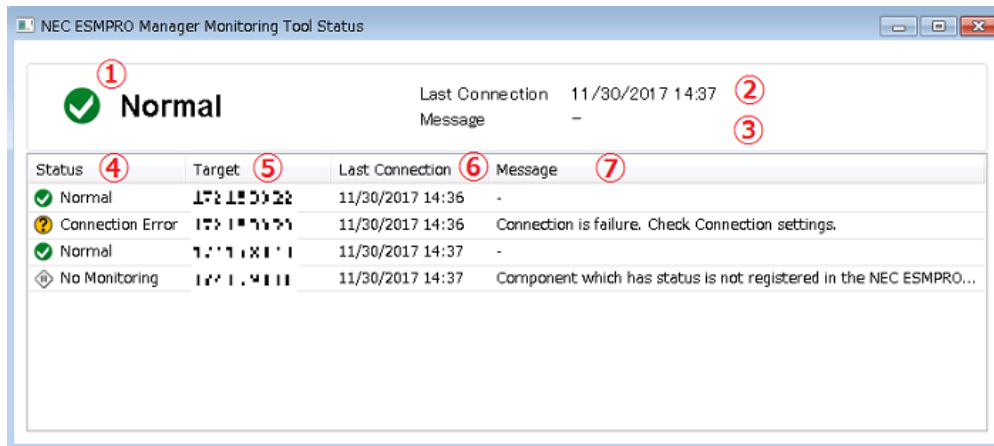
Please refer to online help about other operations such as monitoring interval change etc.  
The way to open online help is described in "5. Other operations."

# 1. How to check the status of registered target

This page describes how to check the status of registered NEC ESMPRO Manager.

## 1.1 Status Screen

Status screen is used for checking the status of registered NEC ESMPRO Manager.



Detail of each items are shown below.

No.	Description
1	This is Status of NEC ESMPRO Manager Monitoring Tool. The status of NEC ESMPRO Manager Monitoring Tool will be decided by most important top status of monitoring targets.
2	This is Last connection time of NEC ESMPRO Manager Monitoring Tool.
3	This is Message for the status of NEC ESMPRO Manager Monitoring Tool.
4	This is Status of a monitoring target.
5	This is Address of a monitoring target.
6	This is Last connection time of a monitoring target.
7	This is message for Error. Help message for resolving error will be displayed here.

---

## 1.2 How to open Status Screen

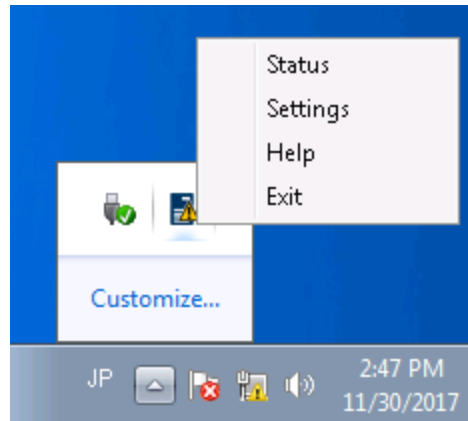
---

There are two ways to open the Status Screen

### 1. Status Screen can be opened from main menu.

Main menu will be opened by right clicking this tool icon.

Status Screen will be opened by clicking [Status] on main menu.



### 2. Status Screen can be opened by left clicking this tool icon.

Status Screen can be opened by left clicking this tool icon of notification area.



---

## 2. How to add the new monitoring target

---

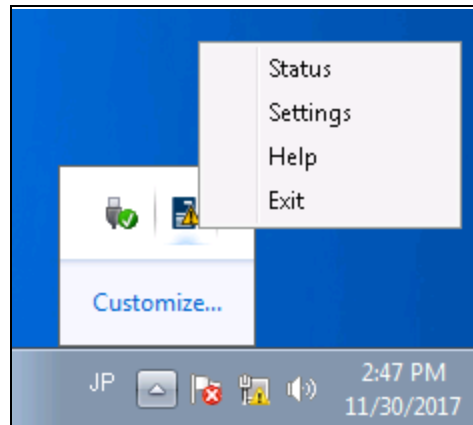
This page describes how to add new NEC ESMPRO Manager.

Detail of this, please refer to online help of this tool.

### 1. Open Setting Screen.

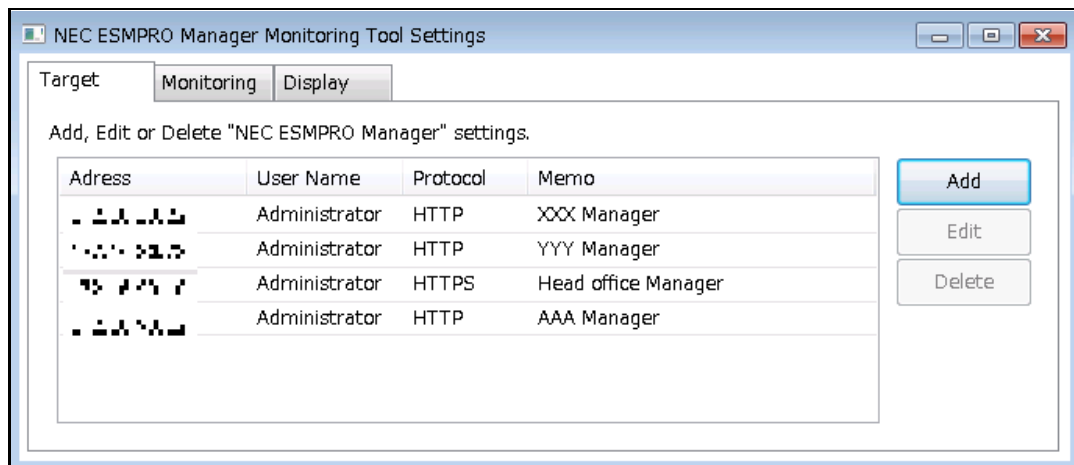
Main menu of this tool will be opened by right clicking this tool icon.

Setting Screen will be opened by clicking [Setting] on the main menu.



### 2. Open [Target] tab of Setting Screen.

Click [Target] tab of Setting Screen.



### 3. Click [Add] button on the Setting Screen.

The window which is used for adding new target will be opened by clicking [Add] button.

NEC ESMPRO Manager Monitoring Tool Add

Add the information of Managed ESMPRO/ServerManager.  
[\*] is required.

Address[\*] 192.168.x00x.x00x

Port[\*] 21112

User Name[\*] TestUser

Password[\*] ●●●●●●●●

Protocol[\*]  HTTP  HTTPS

memo Free format.

Add Cancel

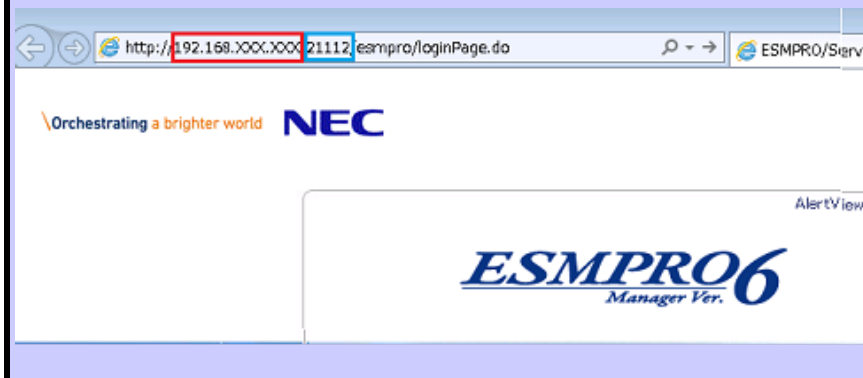
### 4. Enter information of new target to the adding window.

Enter new target information to the adding window.

#### Tips

Enter the user name and password of NEC ESMPRO Manager to User and Password fields. Address, and Port information will be got from URL of the web login screen as following.

Red area: Address  
Blue area: Port



### 5. After entering all the information, click the [Add] button.

After entering all the information, click the [Add] button. New monitoring target will be added.

---

## 3. How to edit the registered target.

---

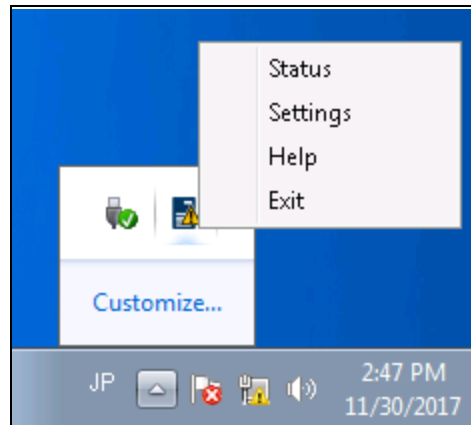
This page describes how to edit registered NEC ESMPRO Manager information.

Detail of this, please refer to online help of this tool.

### 1. Open Setting Screen

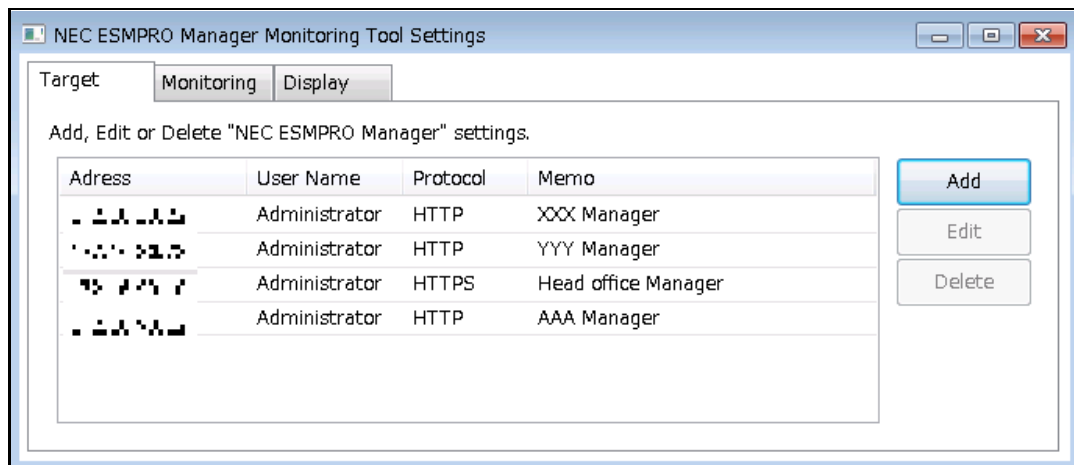
Main menu of this tool will be opened by right clicking this tool icon.

Setting Screen will be opened by clicking [Setting] on the main menu.

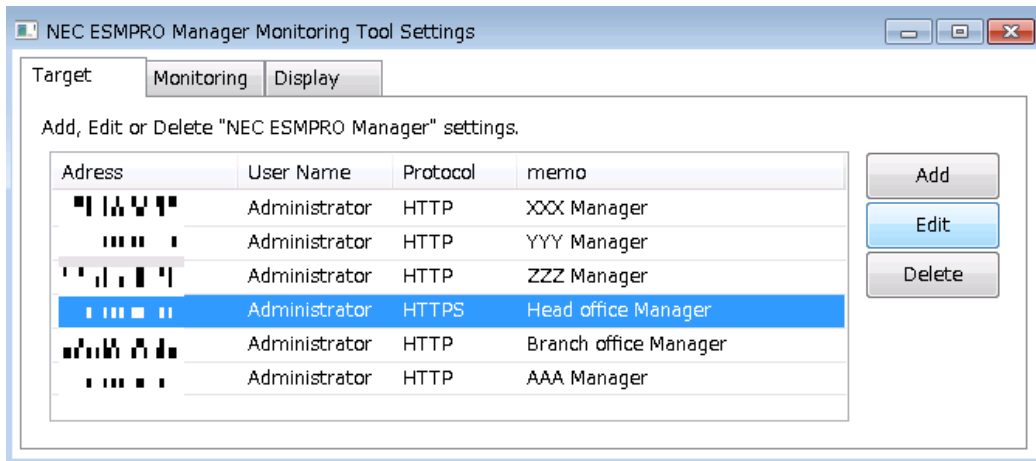


### 2. Open [Target] tab of Setting Screen

Click [Target] tab of Setting Screen.

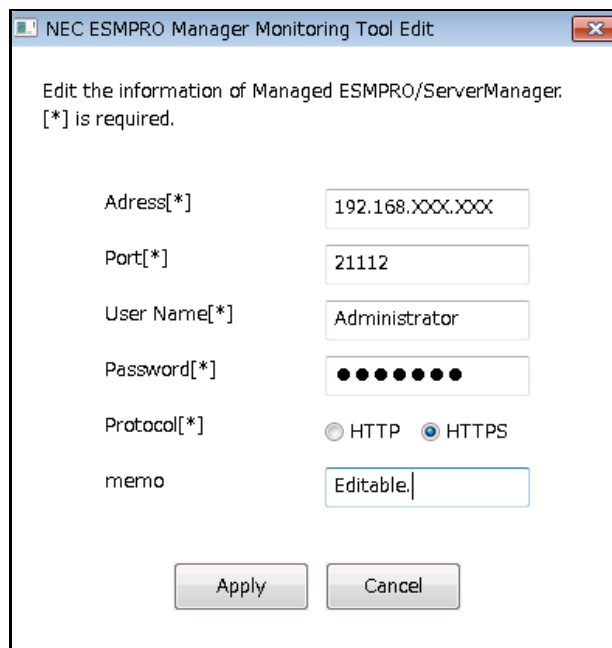


### 3. Click edit target from the list of Setting Screen.



### 4. Click [Edit] button.

Edit Screen will be displayed by clicking [Edit] button after clicking edit target.



### 5. Click [Apply] button after editing.

New information will be applied after clicking [Apply] button.

---

## 4. How to delete the registered target.

---

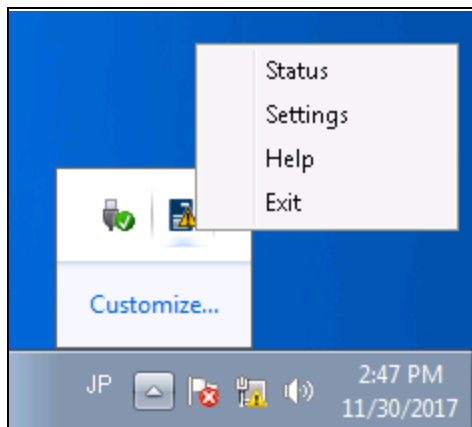
This page describes how to delete registered NEC ESMPRO Manager from this tool.

Detail of this, please refer to online help of this tool.

### 1. Open Setting Screen

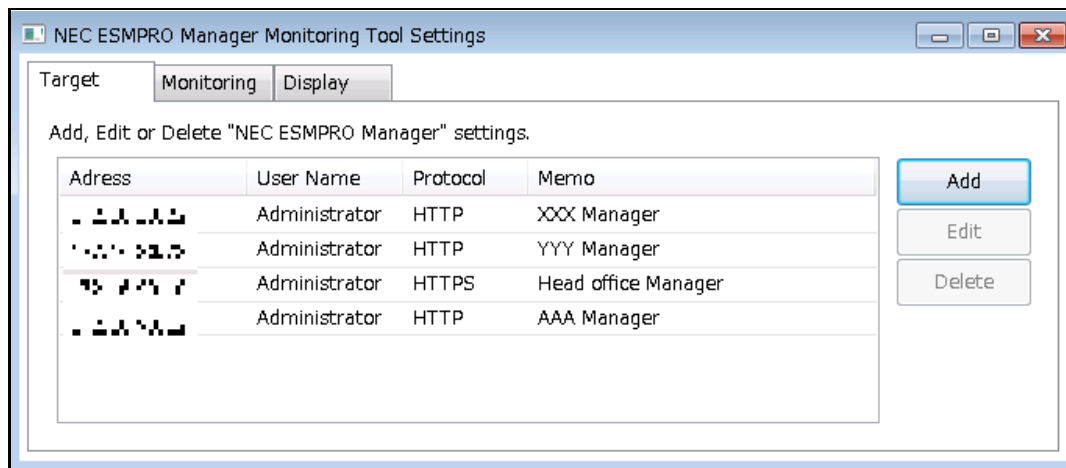
Main menu of this tool will be opened by right clicking this tool icon.

Setting Screen will be opened by clicking [Setting] on the main menu.

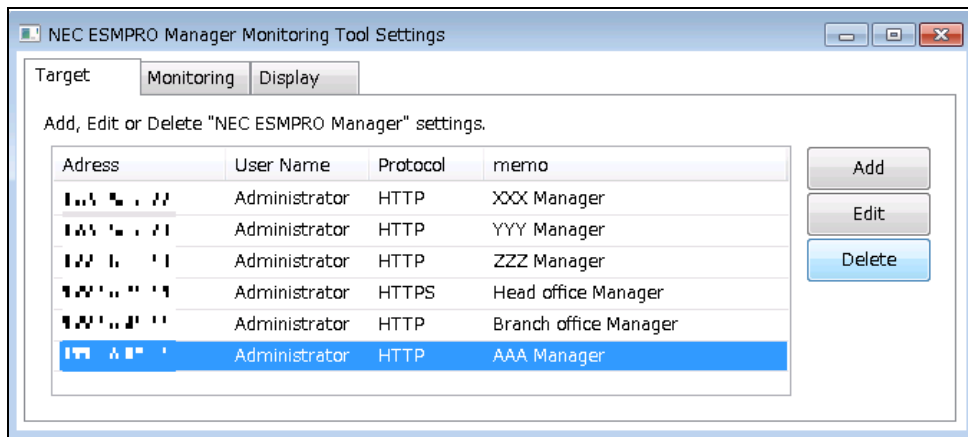


### 2. Open [Target] tab of Setting Screen

Click [Target] tab of Setting Screen.

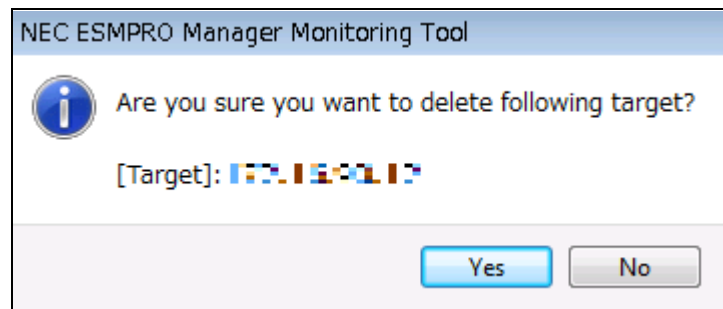


### 3. Click delete target from the list of Setting Screen.



### 4. Click [Delete] button.

Confirmation message for deletion will be displayed by clicking [Delete] button.



### 5. Click [Yes] button

Registered NEC ESMPRO Manager will be deleted from this tool by Clicking [Yes] of Confirmation message.

---

## 5. Other operations

---

Please refer to online help for other operations of this tool.

This page describes how to open online help of this tool.

---

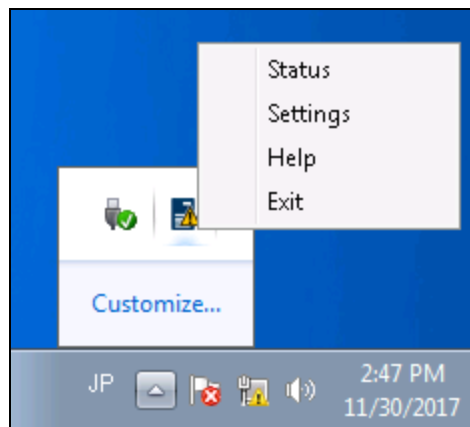
### 5.1 How to open online help

---

#### 1. Open online help

Main menu of this tool will be opened by right clicking this tool icon.

Online help will be opened by clicking [Help] on the main menu.



### About External Libraries which this product uses

This product contains libraries ("external libraries") provided by the third party suppliers ("suppliers"). Assume and agree these libraries' license documents and NOTICE files before using this product.

License documents and NOTICE files of external libraries are stored in the following folders:

\*<The folder in which this product is installed>\ESMNT\license

External Libraries are listed in "External Libraries and their copyright."

Notwithstanding any of the terms in the Agreement or any other agreement you may have with NEC:

- a) "Suppliers" provide the libraries WITHOUT WARRANTIES OF ANY KIND and, such Suppliers DISCLAIM ANY AND ALL EXPRESS AND IMPLIED WARRANTIES AND CONDITIONS INCLUDING, BUT NOT LIMITED TO, THE WARRANTY OF TITLE, NON-INFRINGEMENT OR INTERFERENCE AND THE IMPLIED WARRANTIES AND CONDITIONS OF MERCHANTABILITY AND FITNESS FOR A PARTICULAR PURPOSE, WITH RESPECT TO THE EXTERNAL LIBRARIES;
- b) In no event are the suppliers liable for any direct, indirect, incidental, special, exemplary, punitive or consequential damages, including but not limited to lost data, lost savings, and lost profits, with respect to the external libraries; and,
- c) NEC and the suppliers are not liable to you, and will not defend, indemnify, or hold you harmless for any claims arising from or related to the external libraries.














#### ◆ External Libraries and their Copyright

Python	Copyright © 2001-2018 Python Software Foundation.
wxPython	Copyright © 1998-2005 Julian Smart, Robert Roebling et al
Requests	Copyright © 2017 Kenneth Reitz
PyCrypto	Public Domain


















## The relationship between notification area icons of this tool and NEC ESMPRO Manager Status

The relationship between icons which are used in notification area of this tool and status of NEC ESMPRO Manager is described in this chapter.

ICON OF THIS TOOL	NEC ESMPRO STATUS	STATUS	DESCRIPTION
		Error	Top status of Managed target which is registered in NEC ESMPRO Manager Monitoring Tool is Error.
		Warning	Top status of Managed target which is registered in NEC ESMPRO Manager Monitoring Tool is Warning.
		DC-OFF	Top status of Managed target which is registered in NEC ESMPRO Manager Monitoring Tool is DC-OFF, POST, or OS Panic.
		Unknown	Top status of Managed target which is registered in NEC ESMPRO Manager Monitoring Tool is Unknown.
		Normal	All Managed target which is registered in NEC ESMPRO Manager Monitoring Tool is Normal.
		No Monitoring	Managed target which is registered in NEC ESMPRO Manager Monitoring Tool does not have monitoring target.
	-	Connection Error	NEC ESMPRO Manager Monitoring Tool cannot connect managed target by some error.
	-	Startup	NEC ESMPRO Manager Monitoring Tool is connecting in managed target.
	-	Stop	NEC ESMPRO Manager Monitoring Tool does not have managed target or all status monitoring is stopping.

## The relationship between status icons of this tool and NEC ESMPRO Manager Status

The relationship between icons which are used in status screen of this tool and status of NEC ESMPRO Manager is described in this chapter.

STATUS OF THIS TOOL	NEC ESMPRO STATUS	STATUS	DESCRIPTION
		Error	The managed target status is Error.
		Warning	The managed target status is Warning.
		DC-OFF	The managed target status is DC-OFF, POST, or OS Panic.
		Unknown	The managed target status is Unknown.
		Normal	The managed target status is Normal.
		No Monitoring	The managed target status does not have monitoring target.
	-	Connection Error	NEC ESMPRO Manager Monitoring Tool cannot connect the managed target.
	-	Startup	NEC ESMPRO Manager Monitoring Tool is connecting to the managed target.
	-	Stop	The managed target is not monitoring.