

Express5800/R320e-E4, R320f-E4 Express5800/R320e-M4, R320f-M4 Express5800/R310e-E4, R310f-E4 Precautions 注意事项

Thank you for choosing Express5800/ft series.

When you use Express5800/ft series, some precautions should be taken.

Read the following precautions before using and follow them.

Keep this document in a safe place for quick reference when necessary.

感谢您选择Express5800/ft系列。

当您使用Express5800/ft系列时，请注意以下事项。

在使用前请阅读以下注意事项并遵守

请将本文档妥善保存以便需要时快速查阅。

1. UPDATE CD/DVD-ROM

Please check Packing List that comes with this server.

When the UPDATE CD/DVD is attached, it must be applied to update ft Server Control software.

When you set up the OS on this server with the EXPRESSBUILDER DVD, update the ft Server Control software.

Perform the update after checking that the server is running in duplex mode.

Refer to Users' Guide and Maintenance Guide for checking the status by LED.

1. 更新 CD/DVD-ROM

请检查服务器附带的装箱单。

如果带有UPDATE CD/DVD，则必须适用于更新ft Server Control 软件。

当您使用EXPRESSBUILDER DVD 在服务器上安装OS时，请更新ft Server Control软件。

检查服务器以双工模式运行后，执行更新。

关于如何通过LED查看状态，请参考用户指南和维护指南。

2. Windows Server 2008 R2 Service Pack 1

- Windows Server 2008 R2 Service Pack 1 Installation

When you install Windows Server 2008 R2, Windows Server 2008 R2 Service Pack 1 must be applied to the system. When you set up the OS on this server with the EXPRESSBUILDER DVD, if your OS install media does not contain Service Pack 1, apply it.

And when installing Windows Server 2008 R2 Service Pack 1, it recommends that the following update is applied before installing Service Pack. Please refer to URL of Microsoft for details.

KB2487426 (Microsoft)

An application error (Error Event ID:1000) occurs in x86-based applications or services when you install SP1.

<http://support.microsoft.com/kb/2487426>

KB2533552 (Microsoft)

"0xC0000034" error message when you try to install Windows Server 2008 R2 SP1.

<http://support.microsoft.com/kb/2533552>

KB2534366 (Microsoft)

"0xC000009A" error message when you try to install Windows Server 2008 R2 SP1.

<http://support.microsoft.com/kb/2534366>

2. Windows Server 2008 R2 Service Pack 1

- 安装 Windows Server 2008 R2 Service Pack 1

Windows Server 2008 R2 Service Pack 1 必须应用于该系统。当您使用 EXPRESSBUILDER DVD 在服务器上安装了 OS, 如果您的 OS 安装介质不包含 Service Pack 1, 请安装它。

并且当安装 Windows Server 2008 R2 Service Pack 1 时, 建议在安装补丁前安装以下程序。关于具体内容请参考微软的 URL。

KB2487426 (Microsoft)

An application error (Error Event ID:1000) occurs in x86-based applications or services when you install SP1.

<http://support.microsoft.com/kb/2487426>

KB2533552 (Microsoft)

"0xC0000034" error message when you try to install Windows Server 2008 R2 SP1.

<http://support.microsoft.com/kb/2533552>

KB2534366 (Microsoft)

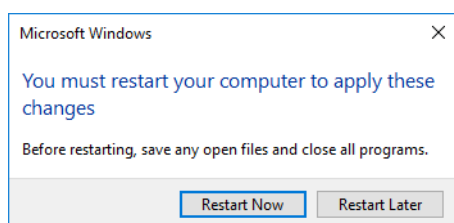
"0xC000009A" error message when you try to install Windows Server 2008 R2 SP1.

<http://support.microsoft.com/kb/2534366>

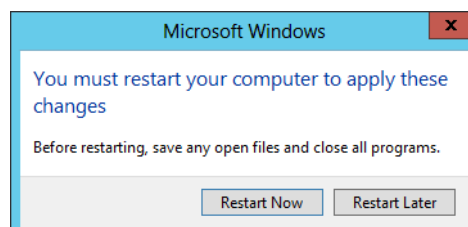
3. Reinstall

During the reinstallation of the OS using Set up with EXPRESSBUILDER or Set up with Windows Standard Installer, all procedures are carried out automatically. Do not perform any operations with a keyboard or a mouse although the message shown in the figure below is displayed.

When installation is stopped with operation of keyboard or mouse, there is a possibility that OS does not start normally.



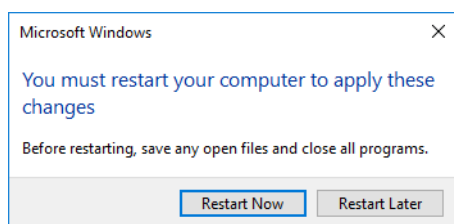
(Windows Server 2016)



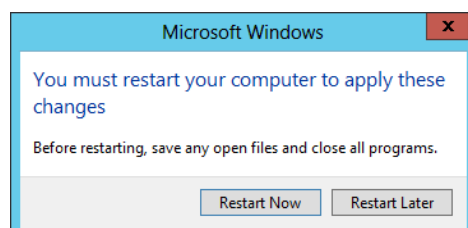
(Windows Server 2012 R2)

3. 重新安装

通过EXPRESSBUILDER或Windows标准安装重新安装过程中，ft Server Control Software的安装过程会显示如图所示的信息时，所有程序会自动处理，从键盘或鼠标上请忽执行任何操作。如果意外中断安装，有可能导致OS不正常启动。



(Windows Server 2016)



(Windows Server 2012 R2)

4. Unsupported Features

The following features of Windows Server 2012 R2 / Windows Server 2008 R2 are not supported by Express5800/ft series.

- ServerCore
- BitLocker
- RemoteFX
- Storage Spaces
- Thin provisioning
- NIC teaming
- SR-IOV

The following features of Windows Server 2016 are not supported by Express5800/ft series.

- ServerCore
- Nano Server
- BitLocker
- Shielded VM
- RemoteFX
- Storage Spaces
- Storage Spaces Direct (S2D)
- Thin provisioning
- SR-IOV
- Remote Direct Memory Access (RDMA)
- Switch Embedded Teaming (SET)
- Storage Class Memory (SCM)
- Discrete Device Assignment
- Production checkpoints

4. 不支持的功能

Express5800/ft series服务器在Windows Server 2012 R2 / Windows Server 2008 R2的平台上，不支持以下功能。

- 服务器核心
- BitLocker
- RemoteFX
- 存储空间
- 精简配置
- NIC绑定
- SR-IOV

Express5800/ft series服务器在Windows Server 2016上，不支持以下功能。

- 服务器核心
- 纳米服务器
- BitLocker
- 屏蔽VM
- RemoteFX
- 存储空间
- 直接储存空间（S2D）
- 精简配置
- SR-IOV
- 远程直接内存访问（RDMA）
- 切换嵌入式组合（SET）
- 存储类内存（SCM）
- 离散设备分配
- 生产检查站

5. Documentations stored in EXPRESSBUILDER DVD

The EXPRESSBUILDER DVD contains electronic manuals including User's Guide, Installation Guide, and Maintenance Guide. These may not be the latest manuals.

If you are using Express5800/ft series, refer to paper documents

(User's Guide, Installation Guide, and Maintenance Guide) provided with the product.

5. 存储于EXPRESSBUILDER DVD的文档

EXPRESSBUILDER DVD 中包含电子手册：用户指南、安装指南以及维护指南。

但可能不是最新的手册。

如果您正在使用 Express5800/ft series，请参考产品提供的纸面文档

(用户指南、安装指南以及维护指南)。

6. Boot from CD/DVD medium

When you boot from EXPRESSBUILDER or OS installation disc, or start miniOS of backup software, it may affect on area in partition outside of duplexing disks by the RDR function (BCD area) and it may cause system fault at starting the system.

There is no problem when it is not duplexing disks by the RDR function at the time of setup etc.

When it is necessary to boot by these bootable medium, pull out one side or both side of the disks from inserted disks which is duplexing by the RDR function before boot.

6. 通过 CD/DVD 媒介启动

当你通过 EXPRESSBUILDER 或者 OS 安装光盘或者启动 miniOS 备份软件时，可能会对 RDR 功能实现的双工磁盘外的分区 (BCD 区域) 有所影响。有可能会在系统启动时出现故障。

在设置 RDR 功能并且不是双工盘时候不会出现问题。当需要通过这些可引导介质引导时，在启动之前拔出由 RDR 功能中双工的磁盘的一侧或两侧。

7. CD/DVD medium

Please disable the internal optical disk drive when you use the system.

Please remove CD or DVD medium promptly after using even if the optical disk drive is "Enable".

There is a possibility that duplex process doesn't perform normally if CD or DVD medium is inserted into CD/DVD drive. If it fails, please reboot the system after removing a medium.

7. CD/DVD媒介

使用系统时请禁用内置光驱。

使用后请取出 CD 或 DVD 媒介。

当 CD 或 DVD 媒介放入 CD/DVD 驱动器中时，双向进程可能无法正常执行。若执行失败，则取出媒介后重启系统。

8. Setting RDR in ft server control software version 11.2.xxxx

When setting RDR to the synchronization destination disk, it's necessary to perform "Initialize Disk" in "Disk Management" to a target disk beforehand.

And, when setting RDR in the ft control software version 11.2.xxxx, there are cases a RAW volume is created with the size of 1MB.

For details, refer to Chapter 2 (1.2 Disk Operations Using the RDR (Rapid Disk Resync) Function) in Maintenance Guide (Windows).

8. ft服务器控制软件的版本11.2.xxxx的RDR设定

如果 RDR 设定对同步目标硬盘，“磁盘管理”中对相应的磁盘执行“磁盘初始化”。

并如果在 ft 控制软件版本为 11.2.xxxx 的环境中配置 RDR，则可能会创建 1MB 的文件系统为 RAW 的卷。

详细信息请参考“安装指南（Windows）”中的第 2 章（1.2 使用 RDR(Rapid Disk Resync)功能的磁盘操作）。

9. Configuration of Dynamic disk

A disk installed OS must not be configured as “Dynamic disk”. Please use as “Basic disk”.

A disk not installed OS (means a disk saved user data) can support “Dynamic disk”.

9. 配置动态磁盘

安装了 OS 的硬盘不能被设为“动态磁盘 (Dynamic disk)”，请将其用作“基本磁盘 (Basic disk)”。未安装 OS 的磁盘(保存有用户数据的磁盘)可设为“动态磁盘 (Dynamic disk)”。

10. Mirrored volume(RAID-1) or RAID-5 volume Configuration

If a mirrored volume (RAID-1) or RAID-5 volume is built on a dynamic disk, the System FT LED and Safe To Pull LED indicating the status of the ft server may not be displayed correctly, and information of duplex and simplex status of the PCI module may not be output to the event log properly. If you are going to use a dynamic disk, convert only a data disk to a dynamic disk and build as a simple volume, spanned volume, or striped volume.

10. 配置镜像卷(RAID-1)或RAID-5卷

当在动态磁盘中创建了镜像卷(RAID-1)或RAID-5卷时，用于指示ft服务器状态的System FT LED以及Safe To Pull LED可能不会正确显示，PCI模块的双工和退化信息也不会被正确输出到事件日志中。若要使用动态磁盘，请仅将数据磁盘转换为动态磁盘。

且仅创建为单一卷、跨区卷或条带卷。

11. Applications to which attention is necessary

There are pcAnywhere, Radmin, JP1/NETM/Remote Control Agent and LANDesk Management Suite (agent) as application with a possibility that it have an influence on the Duplicating Operation of the ft server. They makes problems which system operation becomes unstable by the influence of the compatibilities with the video driver.

NEC recommend using "WebSAM WinShare" which has equivalent function, if you need remote access/operation.

11. 需要特别注意的应用程序

pcAnywhere, Radmin, JP1/NETM/Remote Control Agent以及LANDesk Management Suite (agent) 等应用程序可能对ft服务器的二重化运行有影响。由于视频驱动器兼容性的影响，会造成问题导致系统运行不稳定。

若您需要远程访问和操作，NEC建议您使用具有同等功能的“WebSAM WinShare”。

12. Display colors setup

Please don't set the number of color display for below 16(4bit) to ft server. If it is set, there is a possibility that the Duplicating Operation of ft server doesn't work normally.

12. 显示颜色

请不要将ft服务器的颜色设为小于16(4bit)，否则可能导致系统无法正常工作。

13. Precautions for Changing Display Resolution

In a Windows Server 2016 environment, when changing display resolution, refresh rates for each resolutions in the List of valid modes are shown as 64 Hertz, but 60 Hertz is set actually.

13. 更改显示分辨率的注意事项

在 Windows Server 2016 环境中，当更改显示分辨率时，“有效模式列表”中的每个分辨率的刷新率将显示为 64 赫兹，但实际设置为 60 赫兹。

14. Precautions for Warning Pop-up Message at Changing Display Resolution

In the Windows Server 2016 environment, only in case of the display resolution is changed first (such as select the resolution from the List of valid modes, select OK, and select Apply in the Pilot3 Video Properties window), a warning pop-up message about administrative privilege may be shown. This does not affect the operation. Select OK and close the warning pop-up message. Though at closing the pop-up message, the display resolution selected is not set yet, open List All Modes from the Adapter tab and set display resolution again. After that, the warning pop-up message may not be shown when changing display resolution. Although if the warning pop-up message is shown again, select OK in the message and close.

14. 更改显示分辨率时警告弹出消息的注意事项

在 Windows Server 2016 环境下，为了防止显示分辨率被优先更改了（例如从有效模式列表中选择分辨率的情况下，选择“确定”，然后在“Pilot3 视频属性”窗口中选择“应用”），可能会出现一个有关管理权限的警告弹出信息。这不会影响操作。选择“确定”关闭警告弹出信息即可。虽然在关闭弹出消息时，选择的显示分辨率尚未设置，但是可以从“适配器”选项卡中打开“列出所有模式”，并再次设置显示分辨率。之后，更改显示分辨率时可能不会显示警告弹出消息。如果再次显示警告弹出消息，这时可以在消息中选择“确定”并关闭。

15. Precautions for Windows Standard Screensaver

In the Windows Server 2016 environment, use blank or picture screensaver in the Windows standard screensaver. If one of the other items is selected, the screensaver does not operate normally.

15. Windows 标准屏幕保护程序的注意事项

在 Windows Server 2016 环境中，在 Windows 标准屏幕保护程序中选择使用空白或图片。如果选择了其他主题，则屏幕保护程序无法正常运行。

16. Caution when changing Power Options

On the Windows Server 2016 model of this server, the display may be unable to recover from the state of blank screen after setting the display to switch off after a certain time. For this reason, the display's power is configured not to switch off automatically by default (at the time of shipment or re-installing from EXPRESSBUILDER).

When changing the settings to switch off automatically after a certain time, set the display resolution to any value from the Change display settings window, then change the power options. Once changing the display's resolution settings, it is not necessary to change the settings again even if after restarting the system. Refer to Installation Guide for the way to change the setting.

16. 更换电源选项的注意事项

在此服务器的 Windows Server 2016 系统中，在将显示设置为关闭后，显示内容可能无法从电源关闭状态恢复。因此，显示器的电源配置为默认情况下不会自动关机（恢复出厂设置或从 EXPRESSBUILDER 重新安装）。

在一段时间后将设置更改为自动关闭时，请将显示分辨率设置为“更改显示设置”窗口中的任何值，然后更改电源选项。一旦更改显示屏的分辨率设置后，即使重新启动系统，也不需要再次更改设置。有关更改设置的方法，请参阅“安装指南”。

17. Memory DUMP

If DUMP process starts with DUMP switch or system crash, there is a possibility that the following log is registered on the system event log after reboot.

```
source : srbid
type   : error
ID     : 4096
Description : CpuBoard dump, to file [file path], has failed because the CpuBoard is not holding a valid memory dump image (0xd)
```

If the following log is registered on the system event log after reboot, DUMP process saves the DUMP file on the HDD. (Please ignore the above log.)

```
source : Microsoft-Windows-WER-SystemErrorReporting
type   : information
ID     : 1001
Description : The computer has rebooted from a bugcheck. The bugcheck was : 0xFFFFFFFF (0xFFFFFFFF, 0xFFFFFFFF, 0xFFFFFFFF, 0xFFFFFFFF). Microsoft Windows NT (vxx.xxxx). A dump was saved in: [file path name].
```

17. 内存转储

若在 DUMP 开关和系统冲突时开始 DUMP 进程，则重启后系统事件日志中可能记录下面的日志。

```
source : srbid
type   : error
ID     : 4096
Description : CpuBoard dump, to file [file path], has failed because the CpuBoard is not holding a valid memory dump image (0xd)
```

若重启后系统事件日志中记录下面的日志，则 DUMP 将 DUMP 文件保存到 HDD 中。(请忽略上面的日志。)

```
source : Microsoft-Windows-WER-SystemErrorReporting
type   : information
ID     : 1001
Description : The computer has rebooted from a bugcheck. The bugcheck was : 0xFFFFFFFF (0xFFFFFFFF, 0xFFFFFFFF, 0xFFFFFFFF, 0xFFFFFFFF). Microsoft Windows NT (vxx.xxxx). A dump was saved in: [file path name].
```

18. The installed memory size which exceeds 32GB

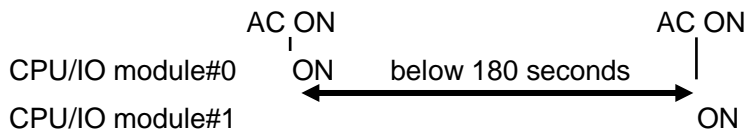
When the installed memory size exceeds 32GB, there is a possibility that the memory dump can't be harvested normally. Refer to Chapter 1 (6.2 The installed memory size which exceeds 32GB) in Installation Guide (Windows).

18. 已安装内存超过32GB大小的

当安装的内存大小超过32GB时，存在无法正常收集内存转储的可能性。请参阅“安装指南（Windows）”中的第1章（6.2 已安装内存超过32GB大小的）。

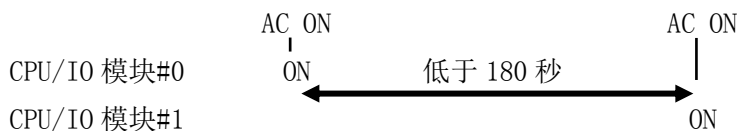
19. AC ON timing for CPU/IO modules

Please set the time between the AC ON timing of CPU/IO module#0 and CPU/IO module#1 for below 180 seconds. If it is set for above 180 seconds, the HDD mirroring will be broken because the only one CPU/IO module working starts.



19. CPU/IO模块的AC ON时间

请将CPU/IO模块#0和CPU/IO模块#1之间的AC ON时间设为小于180秒。若大于180秒，则由于启动单CPU/IO模块运行模式，将导致HDD镜像崩溃。



20. Keyboard and Mouse

In rare cases, keyboard and mouse may not work for about 5 minutes when PCI module switching occurs. To use keyboard and mouse, please wait for device recognition.

20. 键盘与鼠标

当PCI模块发生切换时，在极个别情况下会发生键盘和鼠标不起作用的状况。请等待至设备被识别后再使用键盘和鼠标。

21. Flash FDD

Be careful not to operate the server with the Flash FDD connected.

As the server is operated with the Flash FDD connected, the Flash FDD might not operate normally. In that case, once remove the Flash FDD, and reconnect to this server.

21. 闪存FDD

不要在连接了闪存FDD时运行服务器。

若在连接了闪存FDD时连接服务器，则闪存FDD可能不会正常运行。

此时请移除闪存FDD然后重新连接服务器。

22. The Verification task for RDR disk

The following task which runs automatically after 12 hours of OS startup is created on the Task Scheduler. (This is the only task applied to all virtual disks and executed on each virtual disk one by one.)

Task name: RdrFirstVerify

The following task which runs automatically every month is created on the Task Scheduler.

Task name: RdrVerifyLunX (X: virtual disk number)

You can change the schedule of all the above tasks on the Task Scheduler. Please adjust the schedule to execute the tasks at the time zone where I/O load on your system is lower than usual.

22. RDR磁盘的验证任务

如下在 Task Scheduler 上创建的任务在 OS 启动后的 12 小时内将自动运行。（这是应用于虚拟磁盘上的唯一任务，它们在每一块虚拟磁盘上被一一执行。）

Task name: RdrFirstVerify

如下在 Task Scheduler 上创建的任务每个月自动运行。

Task name: RdrVerifyLunX (X: virtual disk number)

您可以在 Task Scheduler 上更改上述所有的任务计划。请调整计划在 I/O 负载低于日常的时区内来执行任务。

23. Precautions for Additional RDX Devices (option)

An internal RDX device (option) or an external RDX device can be connected to the server for backing up data. The RDX device, however, is not configured for redundancy. The RDX device is recognized as a disk drive, but do not access it directly from the OS. Always use backup software supported by the server to operate these devices.

23. 附加RDX装置（选项）时的注意事项

内部 RDX 装置（选项）或外部 RDX 装置可以链接到服务器进行数据备份，但 RDX 装置是没有配置冗余。RDX 装置在 OS 上识别为磁盘驱动，但不能直接从操作系统访问它。必须通过所支持的备份软件的服务器来操作这些设备。

24. QFE Required for Using a PCI Card (including an optional Fibre Channel Card)

At Windows Server 2012 R2, the following issues are reported by Microsoft. When using a PCI card, download the QFE from the knowledge base page to install.

- KB3075161 Computer might crash during storage enumeration stack in Windows Server 2012 R2 (<http://support.microsoft.com/kb/3075161>)

For details of QFE, see the information from Microsoft.

24. 使用PCI卡(可选的 Fibre Channel卡等)时应用所需的QFE

在 Windows Server 2012 R2 上， Microsoft 公司对以下问题由如下报道。当使用 PCI 卡时，请从知识库页面下载 QFE (Hotfix) 并安装。

- KB3075161 计算机可能在 Windows Server 2012 R2 中存储枚举堆栈崩溃 (<http://support.microsoft.com/kb/3075161>)

对于 QFE 的详细信息，请参阅 Microsoft 的信息。

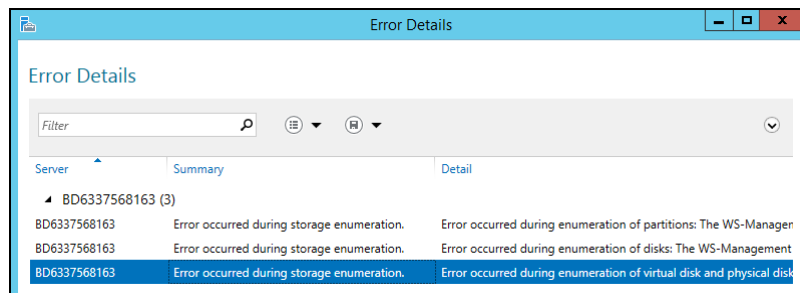
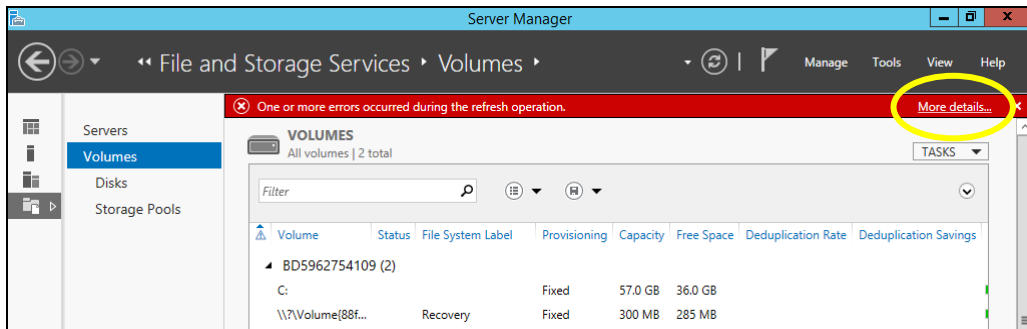
25. Precautions for Using Server Manager on Windows

At Windows Server 2012 R2 on R320e, in case if Server Control Software is 10.x.xxxx, when you click [Volumes] in the Server Manager on Windows, the error "One or more errors occurred during the refresh operation." is displayed. And when you click [More details...], you can confirm the detail error "Error occurred during storage enumeration". Actually it's no problem besides the displayed screen, because the volume is normally recognized, but we recommend KB3121260 is applied because it would avoid this error. Please refer to URL of Microsoft for details.

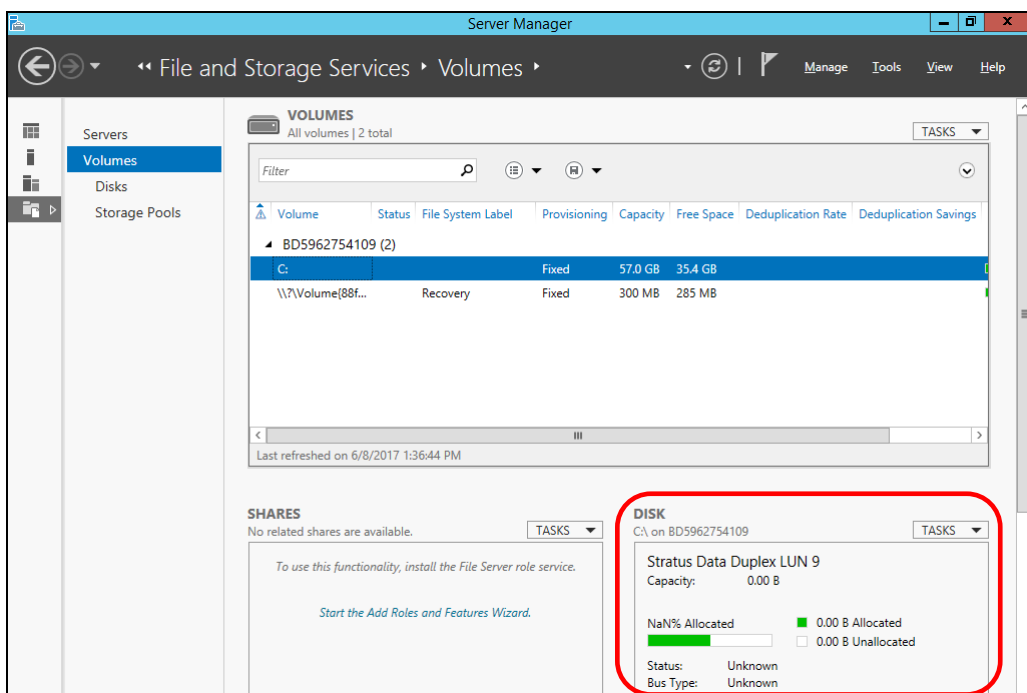
KB 3121260 (Microsoft)

"0x800706BE" error when you query disk details in Windows Server 2012 R2

<http://support.microsoft.com/kb/3121260>



After KB3121260 is applied, the disk information on the lower right of a screen (the Capacity, State ...) is appeared, but it is incorrect ("0.00 B", Unknown ...). In that state, actually it's no problem besides the displayed screen, because the disk is normally recognized.



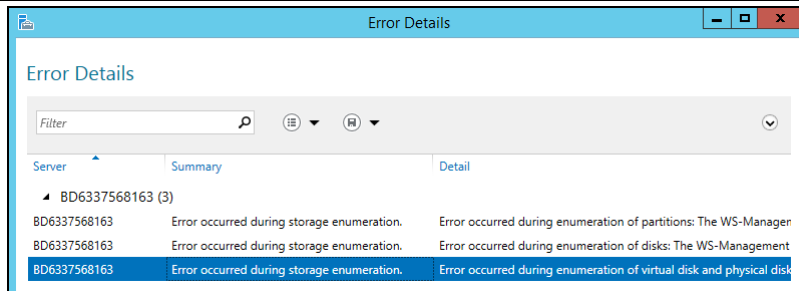
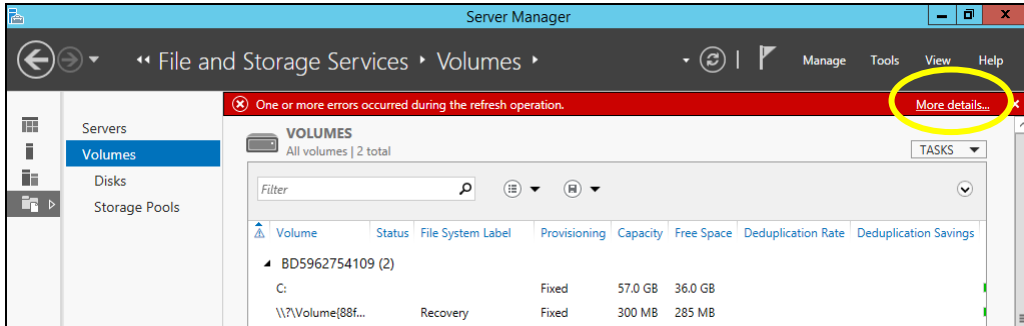
25. 使用服务器管理器画面时注意事项

在R320e的Windows Server 2012 R2中，ft服务器控制软件的版本10. x. xxxx的时候，当在Windows上的服务器管理器中单击[卷]时，将显示错误提示“刷新时发生一个或多个错误”。当你单击[更多详细信息...]时，可以确认该错误的详细信息“存储枚举期间发生错误”。实际上，除了显示的屏幕之外，它是没有问题的，因为系统通常会识别音量，因此我们建议使用KB3121260，因为它会避免出现此错误。有关详细信息，请参阅Microsoft的URL。

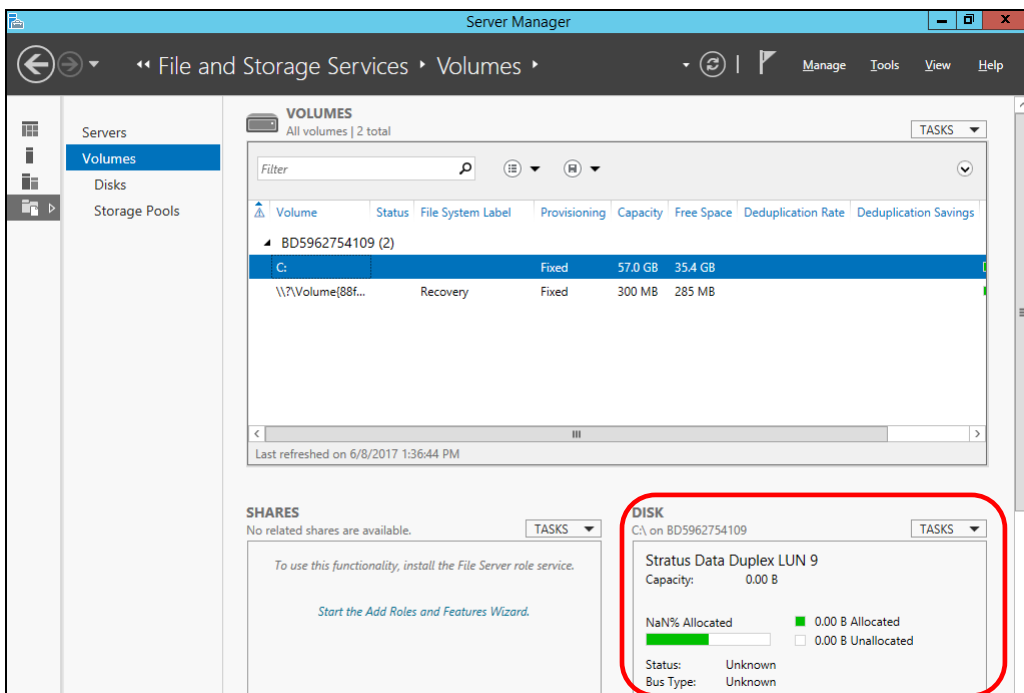
KB 3121260 (Microsoft)

在Windows Server 2012 R2中查询磁盘详细信息时出现“0x800706BE”错误

<http://support.microsoft.com/kb/3121260>



应用KB3121260后，屏幕右下方会出现显示的磁盘信息（容量，状态...），但不正确（“0.00 B”，未知...）。在这种状态下，除了显示的屏幕外，这样是没有问题的，因为磁盘已经被正确识别。



26. Precautions for Using Guest OS

In a Windows Server 2008 R2 environment, Windows Server 2012 and Windows 8 or later are not supported as Guest OS for Hyper-V. In addition, do not apply the update from Microsoft provided in KB2744129.

If any of the programs mentioned above is installed or applied, CPU/IO module may not be linked properly.

26. 客户端OS相关注意事项

在 Windows Server 2008 R2 环境中,Hyper-V 客户端 OS 不支持 Windows Server 2012 和 Windows 8 及以上的版本。另外,请不要安装 KB2744129 更新包。如果安装了上述程序或安装包,CPU/IO 模块有可能无法正常装载。

27. Notes on BIOS version

The firmware version displayed on [CPU module] screen of the ft server utility and the BIOS version on [General] pane of ESMPRO Manager are 'BIOS version 5.0' in a Windows Server 2008 R2 environment, but in some cases the version is displayed as 'BIOS version 4.6'. See also "Additional Information" field when checking the BIOS version.

27. BIOS版本相关注意事项

在 Windows Server 2008 R2 环境中,ft 服务器实用程序的[CPU module]画面上显示的固件版本以及 ESMPRO Manager 上[General]页面中的 BIOS 版本为' BIOS version 5.0',但有些情况下会显示为'BIOS version 4.6',BIOS 的版本确认请参考"附录信息"。



* 856-131507-011- D *