

# **Microsoft® Windows Server™ 2003 R2/ Microsoft® Windows® Server 2003**

## **RUR2 (Service Pack 2) Installation Manual**

## Preface

This manual describes the procedure for correctly applying Windows Server 2003 R2-compliant (Service Pack 2) Difference Module (RUR W2K3-002b-A).

**Tips** If you are using Windows Server 2003 R2 x64 Editions or Windows Server 2003 x64 Editions, refer to “Windows Server 2003 R2 x64 Editions/ Windows Server 2003 x64 Editions R2(Service Pack2)Installation Guide”.

**Read this manual carefully** and apply it after installing Windows Server 2003 R2 or Windows Server 2003 (hereinafter called “Windows Server 2003”) and performing “System Update”.

For installing Windows Server 2003 and “System Update”, refer to the User’s Guide attached to each unit.

**Tips** The “User’s Guide” may be contained in the CD-ROM named “EXPRESSBUILDER”. When you purchased the Express 5800 series, if the “User’s Guide” is not included, refer to “Online Document” from the master control menu in the “EXPRESSBUILDER”CD-ROM.

### ●Items required for installation

Before installing Windows Server 2003 R2 (Service Pack 2), check that the following media and manual are at your hand.

- **Microsoft® Windows Server™ 2003 Service Pack 2**  
(hereinafter called “Windows Server 2003 Service Pack 2”)

For Windows Server 2003 Service Pack 2, prepare either of the following.

- **Download Windows Server 2003 Service Pack 2 from website**  
(hereinafter called “Downloaded version Service Pack 2”)
- **Prepare Windows Server 2003 Service Pack 2 CD-ROM**  
(hereinafter called “CD-ROM version Service Pack 2”)

**Windows Server 2003 R2-compliant (Service Pack 2) Difference Module (RUR W2K3-002b-A)**  
(hereinafter called “Windows Server 2003 R2”)

- **Microsoft® Windows Server™ 2003 R2 / Microsoft® Windows® Server 2003 R2 (Service Pack 2) Installation Manual (this manual)**

## Notes

This section describes notes you should take before starting to install Windows Server 2003 RUR2 correctly.

Be sure to read the notes before starting installation.

### ● Software products

Proper operations may not be guaranteed for some software products on the Windows Server 2003 Service Pack 2 environment.

Before apply Windows Server 2003 Service Pack 2, be sure to confirm with the providers of the software products for their proper operations.

Refer to the service pack-related pages of the following URL:

<http://www.nec.co.jp/express/download/index.html>

For the detailed and latest information, and information on the other products, contact NEC or the dealer from which you purchased the unit.

### ● Applying Windows Server 2003 Service Pack 2

- When applying Windows Server 2003 Service Pack 2 to the Express5800 series, be sure to use and apply **Windows Server 2003 RUR2** according to the instructions given in this manual.

When applying Windows Server 2003 RUR2, be sure to **terminate the applications**.

#### Check

When you intend to apply **Windows Server 2003 RUR2** to an unsupported unit, the following message appears and it is not applied.



- If Windows Server 2003 Service Pack 2 has been applied, it is not necessary to be applied again.

Apply only **Windows Server 2003 RUR2**. For the procedure, refer to <Applying only Windows Server 2003 RUR2> in Step (5) of "1. Applying Windows Server 2003 RUR2".

- Windows Server 2003 RUR2 **does not support uninstallation**.
- We recommend **backing up the system information** before applying **Windows Server 2003 RUR2**.

#### Procedure for backing up system information

##### When "off-line maintenance utility" is supported

We recommend to back up the system information by using the off-line maintenance utility on completion of the system setup.

Without the backup of system information, the information and settings specific to your unit cannot be restored after repair. Back up the system information according to the following procedure:

1. Prepare one 3.5-inch floppy disk.
2. Insert the “EXPRESSBUILDER” CD-ROM into the CD-ROM drive of the main unit and then reboot the unit.  
EXPRESSBUILDER starts and “EXPRESSBUILDER Top Menu” appears.
3. Choose [Tools] - [Off-line Maintenance Utility].
4. From [System information Viewer], choose [Save System Information].

Continue the operation according to the messages displayed on the screen.

### **When “off-line maintenance utility” is not supported**

We recommend backing up the system information by using EXPRESSBUILDER on completion of the system setup.

Without the backup of system information, the information and settings specific to your unit cannot be restored after repair. Back up the system information according to the following procedure:

1. Prepare one 3.5-inch floppy disk.
2. Insert the “EXPRESSBUILDER” CD-ROM into the CD-ROM drive of the main unit and then reboot the unit.  
EXPRESSBUILDER starts and “EXPRESSBUILDER Top Menu” appears.
3. Choose [Tools] - [System information Viewer].
4. From [System information Viewer], choose [Save System Information].

Continue the operation according to the messages displayed on the screen.

### ● **Driver Signing**

When applying **Windows Server 2003 RUR 2**, be sure to check the status of Driver Signing Options according to the following procedure before applying. (When performing check, log in with the user who has the administrator authority (administrator etc.).)

1. Select [Start] - [Control Panel].
2. Select [System] from [Control Panel], click [Hardware] tab.
3. Click [Driver Signing] button on [Driver] field.

Confirm if Driver Signing Options is set to either of the following.

**“Ignore –Install the software anyway and don’t ask for my approval (I)”**  
**“Warn – Prompt me each time to choose an action(W)”**

If the driver signing is set to “Block-Never install unsigned driver software (B)”, modify it to either of the above-mentioned two, then apply **Windows Server 2003 RUR2**.  
(It’s unnecessary to reboot the system after changing the setting.)

After changing Driver Signing Options setting, reset it to the original setting when Windows Server 2003 RUR2 is applied

### ● **Apply Windows Server® 2003 RUR2 (ServicePack2) to the system using Intel® LAN driver**

When applying Windows Server 2003 RUR2 to the system using Intel® LAN adapter, it’s necessary to update driver depending on LAN driver version. Confirm the version according to “1. Confirm driver version”. **If it corresponds, please update LAN driver before applying Service Pack 2.**

## 1. Confirm driver version

- a) Open [Local Area Connection] property dialog.

Click [Control Panel] from [Start] menu and [Control Panel] appears.  
Click [Network Connections] - [Local Area Connection].

**Note** When using classic menu  
Select [Setting] → [Network Connections] from Start menu. Right click [Local Area Connection] icon on [Network Connections] window, select [Properties].

- b) Open network adapter property, confirm the driver version.

Click [Configure], open network adapter property.  
Click [Driver File Details] on [Driver] tab, confirm the version information.  
(Confirm files with “sys” extension name.)

If you're using any of the following driver versions, it's necessary to update LAN driver. Please download the update module from the URL mentioned in “2. Download LAN driver” and apply it

(Table 1)

Category	OS/Driver file name	Driver version
100 BASE driver	WindowsServer®2003/ e100b325.sys	<b>8.0.19.0 - 8.0.21.0</b>
1000 BASE driver (PCI)	WindowsServer®2003/ e1000325.sys	<b>8.5.14.0 - 8.6.11.0</b>
1000 BASE driver (PCI-Express)	WindowsServer®2003/ e1e5132.sys	<b>9.0.15.0 - 9.2.24.0</b>

## 2. Download LAN driver

<http://www.nec.co.jp/express/download/w2003sp2/index.html>

Title :LAN Driver Release for Windows Server 2003 SP2

For the driver installation procedure, refer to the installation manual in the above URL

### ● About Express Setup

Applying Windows Server 2003 RUR2 using Express Setup **is not supported**. When applying **Windows Server 2003 RUR2**, apply it after the Express Setup is terminated.

### ● Settings related to power supply at applying Windows Server 2003 RUR2

While Windows Server 2003 RUR2 is applied, if the following settings have been enabled, the processing may be interrupted or it may not be applied correctly. Disable each setting (uncheck each checkbox) before applying Windows Server 2003 RUR2.

After applying Windows Server 2003 RUR2, reset each setting if needed.

- Setting of power supply (Turn off the monitor or hard disk)
- System hibernates

- **System configuration change**

If you have changed the system configuration (when internal options are installed or removed), apply again **Windows Server 2003 RUR2** referring to “**1 Applying Windows Server 2003 RUR2**” (P.8) in this manual. At this time, it is not necessary to apply the service pack again.

- **When using NEC ESMPRO Agent**

- When this module is applied, the setting values of WDT and Shutdown monitoring are set to the default values for some models. This function is not supported for some models.
- Before applying this module, check the settings of WDT and Shutdown monitoring. After applying it, reset the values if needed.
- Starting the following enables you to check and specify the settings of WDT and Shutdown monitoring.

**NEC ESMPRO Agent in the control panel**

- For details on the operation above as well as WDT and Shutdown monitoring, refer to the manuals of NEC ESMPRO Agent.

- **Applying Windows Server 2003 Service Pack 2, Windows Server 2003 RUR2 using Deployment Manager**

Windows Server 2003 RUR2 can be applied by using the following product.

Deployment Manager (hereinafter called DPM)

When using DPM, apply **Windows Server 2003 RUR2** according to the procedure mentioned later.

(Refer to “3. Apply Windows Server 2003 Service Pack 2, Windows Server 2003 RUR2 with DPM” (P.15))

- **Applying Windows Server 2003 RUR2 to the system using SCSI HostRAID/SATA HostRAID/N8103-86(0ch)**

When Windows Server 2003 Service Pack 2 is applied to the system using SCSI HostRAID/SATA HostRAID/N8103-86(0ch), the services of its management utility, “Adaptec Storage Manager -Browser Edition” (hereinafter abbreviated as ASMBE), may not be started. This may happen when the version of ASMBE is old. In such a case, contact NEC or the dealer from which you purchased it.

- **When using SCSI HostRAID**

**<Setting of SCSI HostRAID-bootable array system>**

When SCSI HostRAID is used, “setting of bootable array system” is required to the array that boots the system by the BIOS of SCSI HostRAID.

**Important**

If the above setting is not done, such problems as the memory dump cannot be collected at fault occurrence are caused.

1. If the following message appears when booting or rebooting the system, press the <Ctrl> key and <A> key at the same time.

**Press <CTRL>< A> for SCSISelect (TM) Utility!**

- On the device menu displayed next, select the channel and press the <Enter> key.

**Tips**

- Be sure to specify the channel to which the array is bound.
- There may be only one channel depending on the model being used.

- Choose the “Configure/View HostRAID Settings” menu.

**Tips**

If there is not the “Configure/View HostRAID Settings” menu on the Options menu, the HostRAID function is not enabled. Therefore, you need not to perform “setting of bootable array system”.

- On the Main menu, select the array and press the <Enter> key. Then, select Bootable.

**Tips**

For the main unit without the [Bootable] menu, you do not need this setting. Proceed to the next step.

- Point the cursor to the array that boots the system, select Mark Bootable, and then press the <Enter> key.

**Tips**

or the Mark Bootable setting, pressing the <B> key on the keyboard enables to set or cancel the setting.

**Important**

To boot the system from the bound array, be sure to perform this setting. Choosing Mark Bootable grants the boot priority to the array regardless of the priority of SCSI ID. “B” indicating bootable is displayed beside the drive ID.

### ● When using SATA HostRAID

If Windows Server 2003 R2 is applied to the system using SATA HostRAID, at the time of system restart after the applying, Found New Hardware Wizard might be started.

When search wizard is started, select “Install the software automatically [Recommended]” and then click [Next] button. The driver will be installed automatically.

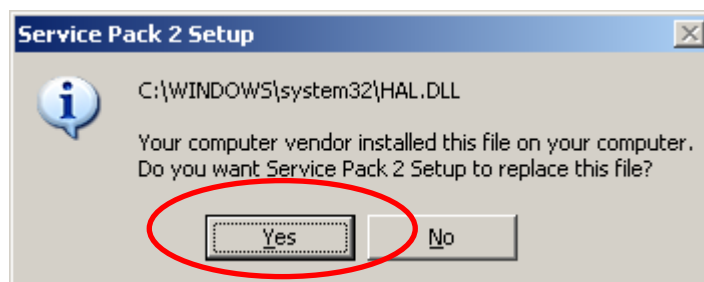
If any warning message is displayed while installing, click “Continue Anyway” button to continue installation.

Administrator authority is necessary for driver installation. Use a user who has the administrator authority (administrator etc.) to perform installation.

### ● When using Express5800/180Rc-4,180Rd-4

When using Windows Server 2003, if applying Windows Server 2003 R2, the following popup message may be displayed.

If the following message is displayed, click [Yes] button to continue.



# 1 Applying Windows Server 2003 RUR2

This section describes how to apply **Windows Server 2003 RUR2**.

**Important** Before applying **Windows Server 2003 RUR2**, refer to the "Website of Microsoft Windows Server 2003 Service Pack 2" and check the disk capacity of your system.

(1) Turn on the peripheral units and the Express5800 series in this order and then start Windows Server 2003.

(2) Prepare **Windows Server 2003 Service Pack2** by either of the following method.

• **To use downloaded version Service Pack 2**

Copy download version Service Pack2 to an arbitrary directory of your system.

**Important**

- It's no necessary to extract the downloaded file(\*\*.exe).
- Do not specify a name including blank characters for the directory name.

• **To use CD-ROM version Service Pack 2**

Prepare Microsoft's Windows Server 2003 Service Pack 2 CD-ROM.

(3) Prepare **Windows Server 2003 RUR2**.

- Download Windows Server 2003 RUR2 from (<http://www.nec.co.jp/express/download/w2003sp2/>).
- Select [Run...] from start menu.
- Input the downloaded file name with it's full path(example: C:\TEMP\\*\*\*.EXE)in the name field. Then, click[OK]button.
- Input extraction destination folder name for the module, click[OK]button.

(4) Execute **Windows Server 2003 RUR2**.

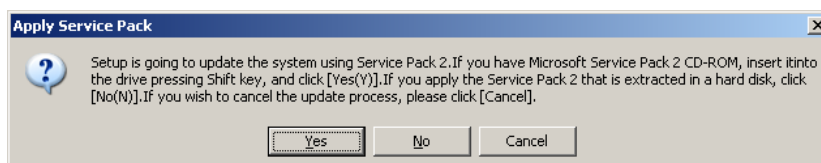
Execute `WRUR\update.vbs` under the extraction destination folder where the module downloaded in step(3)is extracted.

(5) The following message appears. Click [OK].  
To interrupt the update, click [Cancel].



**[When Windows Server 2003 Service Pack 2 has been applied]**

The following message appears:





<To reapply Windows Server 2003 Service Pack 2>

Click [Yes] and proceed to **(6)**.

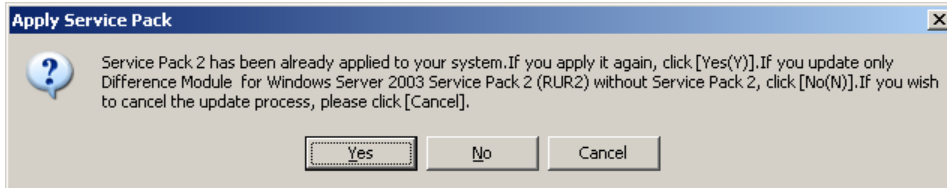
<To apply only Windows Server 2003 R2>

Click [No] and proceed to **(10)**.

<To interrupt the processing>

Click [Cancel].

- (6) The following message appears.



<To use downloaded Service Pack2 >

Click [No] and proceed to **(7)**.

<To use Service Pack2 CD-ROM>

According to the instructions on the screen, while pressing <Shift> key, insert Server 2003 Service Pack 2 CD-ROM into the CD-ROM drive. Click [Yes], and proceed to **(8)**.

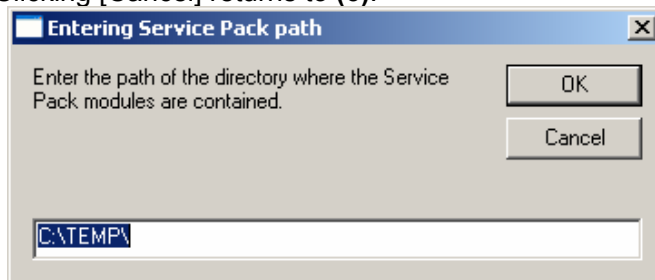
<To interrupt the processing>

Click [Cancel].

- (7) Specifying the directory name where Windows Server 2003 Service Pack 2 was copied is requested.

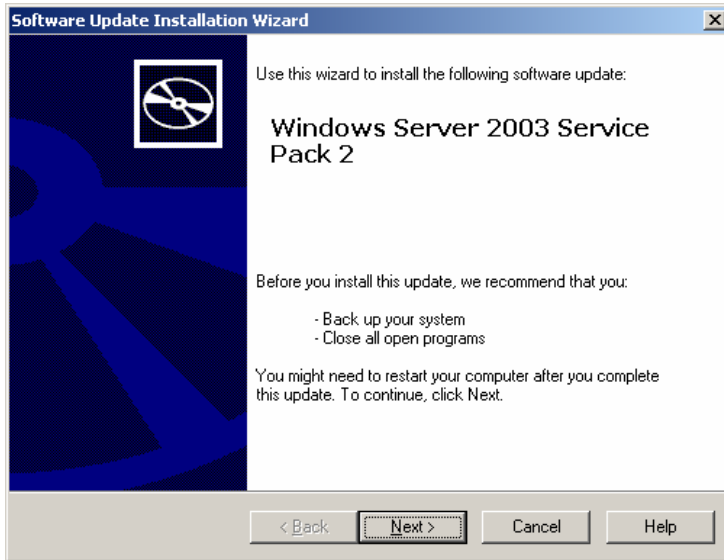
Enter the directory path where Windows Server 2003 Service Pack 2 was copied and click [OK].

Clicking [Cancel] returns to **(6)**.

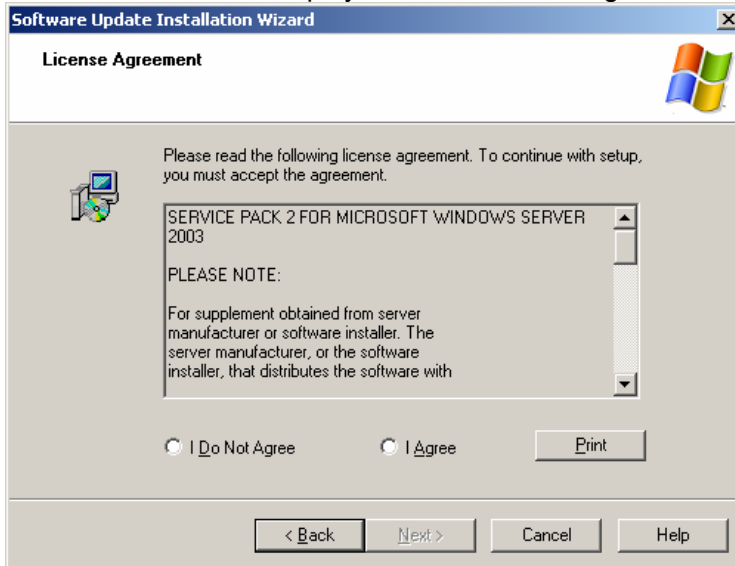


Installation of Windows Server 2003 Service Pack 2 starts.

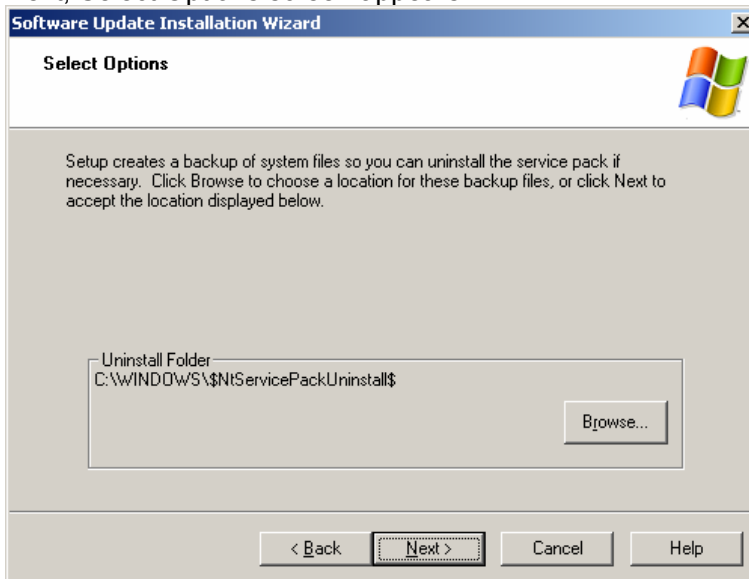
According to the Windows Server 2003 Service Pack 2 setup wizard, install it.



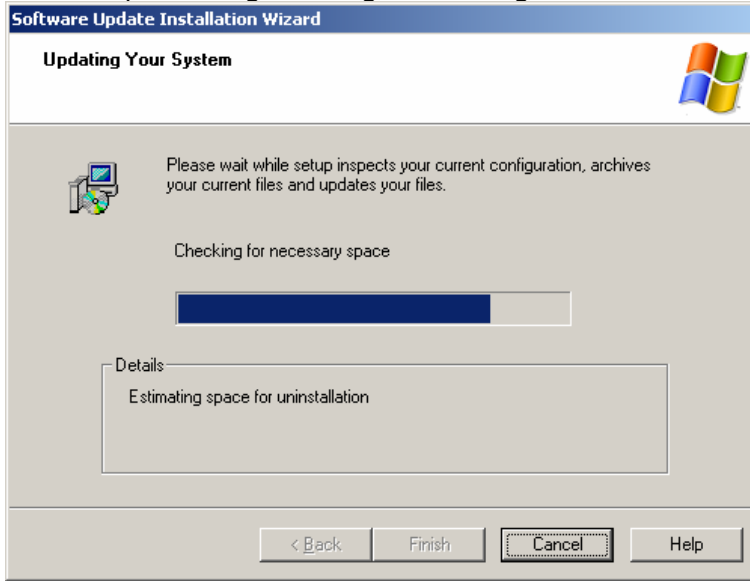
Confirm the contents displayed on the License Agreement screen.



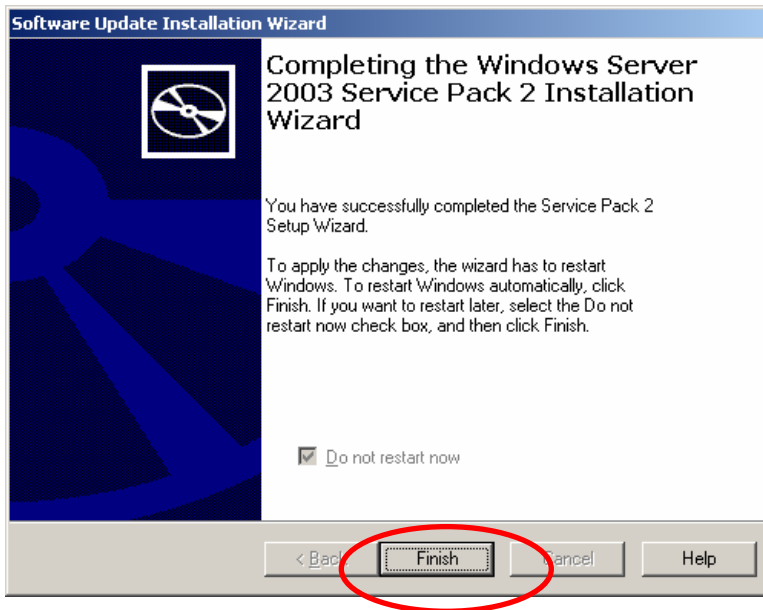
Next, Select Options screen appears.



Continue processing following the messages.

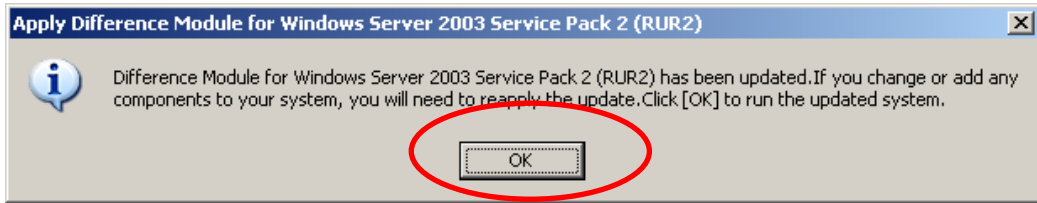


- (8) The following message appears. Click[Finish]. Note that clicking [Finish] does not reboot the system.



- (9) Applying Difference Module in **Windows Server 2003 R2** starts.

- (10) When the following message appears, applying Difference Module is completed. Click [OK] and then reboot system.

**Tips**

If CD-ROM version Service Pack 2 is used, remove it from CD-ROM drive.

Applying **Windows Server 2003 R2R2** is completed.

- Important**
- When SCSI HostRAID is used, "setting of bootable array system" is required to the array that boots the system by the BIOS of SCSI HostRAID. After applying **Windows Server 2003 R2R2**, refer to "**Setting of SCSI HostRAID-bootable array system**" (P.6) and perform the setting. If the above setting is not done, such problems as the memory dump cannot be collected at fault occurrence are caused.
  - If Windows Server 2003 R2R2 is applied to the system using SATA HostRAID, at the time of system restart after the applying, search wizard might be started. When search wizard is started, refer "**When using SATA HostRAID**" (P.6) to install driver.

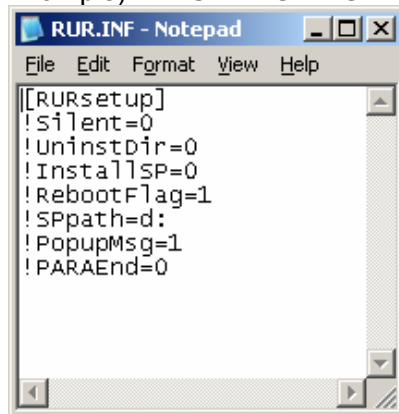
## 2 Applying Windows Server 2003 R2R2 in Silent Mode

This section describes how to apply Windows Server 2003 R2R2 in the silent mode.

- Important**
- Be sure to log into the system and apply Windows Server 2003 R2R2 in the silent mode.  
For the system not logged in, the processing may be interrupted.
  - When using Express5800/180Rd-4, silent mode is not support.

- (1) Prepare **Windows Server 2003 R2R2**.  
Download to an arbitrary directory.(example: E:\RUR2)
- (2) Extract **Windows Server 2003 R2R2**.  
Extract the module downloaded from  
(<http://www.nec.co.jp/express/download/w2003sp2/>).  
(example: E:\RUR2\RUR)
- (3) Open “RUR.INF” in the “**RUR2**” folder with an appropriate text editor such as Notepad.

Example) E:\RUR2\RUR\RUR.INF



```
[RURsetup]
!Silent=0
!UninstDir=0
!InstallSP=0
!RebootFlag=1
!SPpath=d:
!PopupMsg=1
!PARAEnd=0
```

- (4) Edit the “RUR.INF” file and save it.

### Explanation of parameters

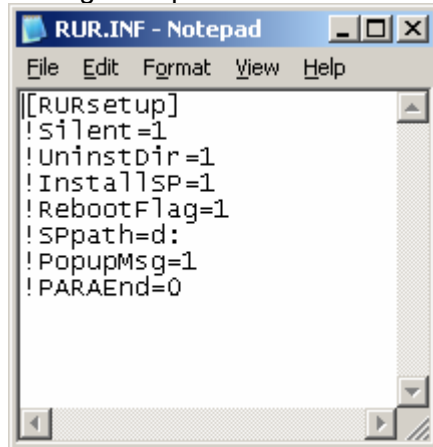
Name	Detail	Operation	Specification
!Silent	Availability of silent operation	Enable silent execution.	1
		Disable silent execution.	0
!UninstDir	Whether to create uninstall directory of Windows Server 2003 Service Pack 2	Create.	1
		Do not create.	0
!InstallSP	Whether to apply Windows Server 2003 Service Pack 2	Apply.	1
		Do not apply.	0
!RebootFlag	Whether to make a restart on completion of Windows Server 2003 R2R2	Restart.	1
		Do not restart.	0
!SPpath	Storage location of Windows Server 2003 Service Pack 1	Apply Windows Server 2003 Service Pack 2 under the specified directory.	Directory name
!PopupMsg	Whether to display message while running in silent mode	Display.	1
		Do not display.	0
!PARAEnd	Termination of parameters	Termination of parameters	Fixed to 0

**Example:**

When applying Windows Server 2003 RUR2 with the settings below, specify as follows.

**Setting contents:**

- Execute in the silent mode.
- Apply Windows Server 2003 Service Pack 2.
- Create uninstall directory.
- Use Windows Server 2003 Service Pack 2 on the CD-ROM (drive D).
- Restart on completion of **Windows Server 2003 RUR2**.

**Setting example:**

```
[[RURsetup]
!silent=1
!UninstDir=1
!InstallSP=1
!RebootFlag=1
!SPpath=d:
!PopupMsg=1
!PARAEnd=0
```

- (5) Execute E:\RUR2\RUR\UPDATE.VBS.

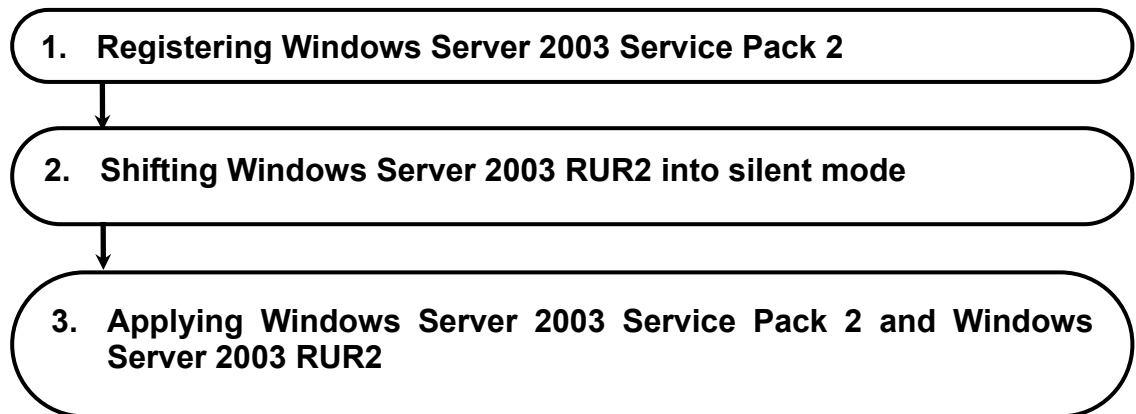
Hereafter, Windows Server 2003 Service Pack 2 and "**Windows Server 2003 RUR2**" are applied automatically. Modify the setting contents as needed.

- Important**
- When SCSI HostRAID is used, "setting of bootable array system" is required to the array that boots the system by the BIOS of SCSI HostRAID. After applying **Windows Server 2003 RUR2**, refer to "**Setting of SCSI HostRAID-bootable array system**" (P.6) and perform the setting. If the above setting is not done, such problems as the memory dump cannot be collected at fault occurrence are caused.
  - If Windows Server 2003 RUR2 is applied to the system using SATA HostRAID, at the time of system restart after the applying, search wizard might be started. When search wizard is started, refer "**When using SATA HostRAID**" (P.6) to install driver.

### 3 Applying Windows Server 2003 Service Pack 2 and Windows Server 2003 RUR2 using DPM

This section describes how to apply Windows Server 2003 Service Pack 2 and Windows Server 2003 RUR2 using DPM.

- Important**
- You cannot apply OS clear installation and Windows Server 2003 RUR2 at the same time.
  - To separately apply Windows Server 2003 RUR2 by remote update, use **DPM3.0 or later**.

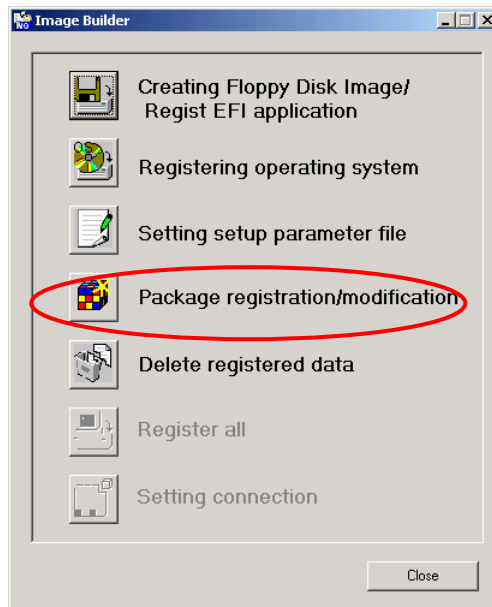


## 1. Registering Windows Server 2003 Service Pack 2

This section describes the procedure for registering Windows Server 2003 Service Pack 2.

**Tips** This section describes the procedure using DPM4.1 as an example. And according to the version, there are some screens which are different, please referring to the later configuration settings.

- (1) From the "Start" menu, select " All Programs " → "DeploymentManager" → "Image Builder". Click "Package registration/modification" from Image Builder.



- (2) Select "Create Windows package" from the "File" menu in the "Package registration/modification" screen.
- (3) Set each item in the "Basic", "Execution Settings" and "Applicable OS and language" tab. It's not necessary to set the other items except followings.



- "Basic" tab

The screenshot shows the 'Create Windows package' dialog box with the 'Basic' tab selected. The fields are filled with the following values:

- Package ID: Local/w2k3\_SP2
- Company name: (empty)
- Release date (YYYY/MM/DD): (empty)
- Package summary: (empty text area)
- Type: Service Pack
- Urgency: Normal
- MS number: KB914961
- Major version: 2
- Minor version: 0

The description box contains the following text: "Description: Enter MS Q number or KB number, and version. Example: In case of Windows 2000 Service Pack 4, MS Q number: Q327194 Major version: 4 Minor version: 0".

- Package ID

It's the ID number combined with package. Input alphanumeric character, "-", or "\_" within 63 bytes.  
You must input this field.

- Company name

It is the name of the publisher that issues the package. Input within 127 bytes.

- Release date

Input the release date of the package. Input by the format of AD/Month/Day.

**Tips**

- If input invalid Release date, it will be ignored or corrected automatically.
- Input four-digit for the year of Release date, two-digit for the month and day.

- Package summary

Input summary information of the package. Input within 511 bytes.

- Type

Specify "**Service pack**".

- Urgency

Specify "**Normal**".

- MS number

Specify "**KB914961**".

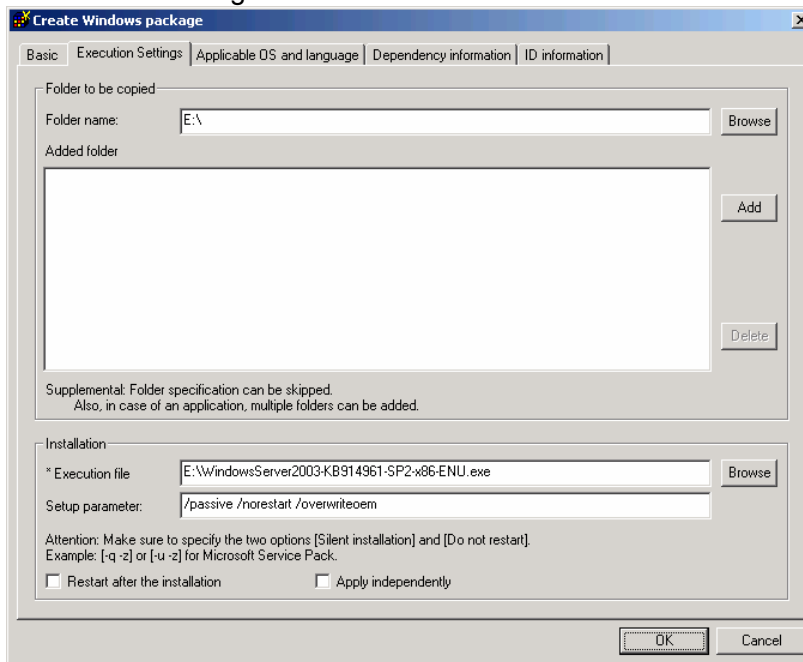
- Major version

Specify "**2**". You must input this field.

- Minor version

Specify "**0**". You must input this field.

- "Execution Settings" tab



- Folder name

Specify the copied folder.

By clicking "Browse" button, you can specify folder.

**Note**

- UNC(Universal Naming Convention)format(\\ "machine name" \ "share folder" \ "sub directory")is disabled in the "Folder name". Assign drive letter by "Assign network drive".
- The patch is registered at the folder unit. Within one folder, only one batch application can be contained.

- Added folder

Click "Add" button, add the folder specified in the "Folder name".

- Execution file

Specify **"copy source**

**folder: \\ WindowsServer2003-KB914961-SP2-X86-ENU.EXE".**

You can click "Browse" button to specify the file.

You must input this field.

**Important**

Don't register a file where %xx(xx is hexadecimal number 0 - f) Example:file%9d.exe) is contained to Execution file. If there's %xx in the package, it can't be downloaded to management server correctly.

- Setup parameter

Specify **"/passive /norestart /overwriteoem".**

The meaning of each setup parameter is as following.

**[/passive]:**

Update with nobody. If any error occurred while scenario executing, the execution will stop at that place. While OS is being installed, the period until timeout is considered scenario executing on the Web console. While remote update is being performed, on the Web console, it will always be the status of scenario executing.

**[/norestart]:**

Specify "/norestart" to make it not restart after execution.

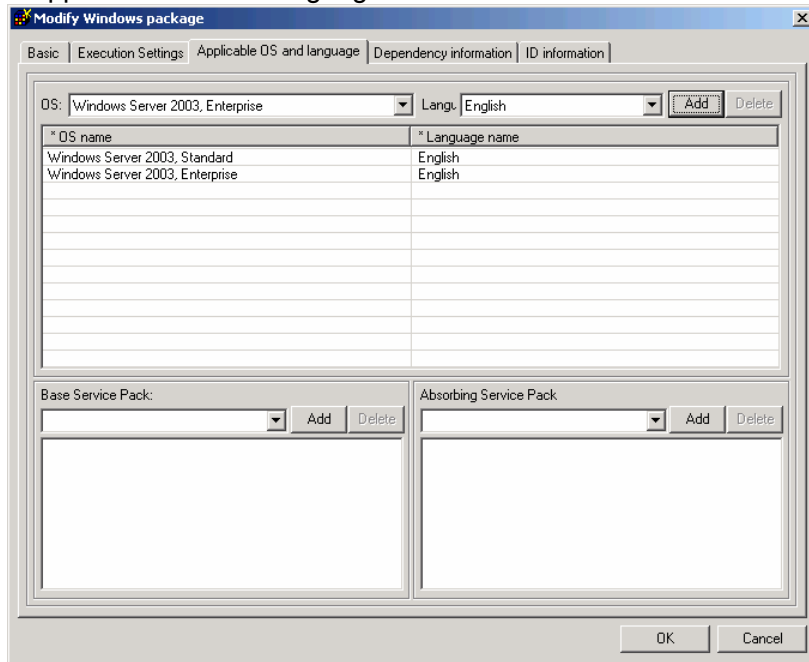
**[/overwriteoem]:**

Specify it when a peculiar driver to OEM is installed.

Processing is executed without displaying the command prompt.

**Tips** You can check on these options by executing the Service Pack /HotFix with the "/Help" or "-?" option specified, or looking up the homepage of distribution source.

· "Applicable OS and language" tab



- "OS" and "Lang"  
Select OS and Language which apply the package. Please appoint below two.

OS	Language
<b>Windows Server 2003, Standard</b>	<b>English</b>
<b>Windows Server 2003, Enterprise</b>	<b>English</b>

- "Add" button of OS and Lang  
Add selected "OS" and "Lang".

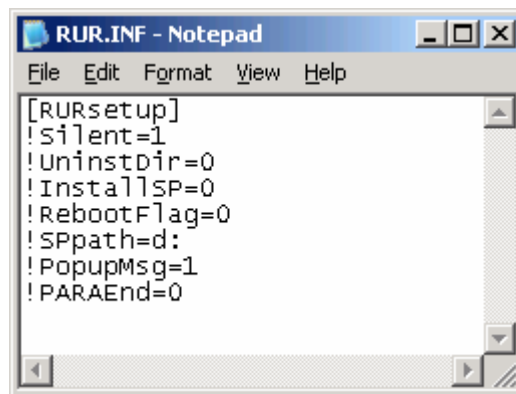
- (4) Click "OK" button to create package.  
With this operation, the registering of Windows Server 2003 Service Pack 2 is completed.

## 2. Shifting Windows Server 2003 RUR2 into silent mode

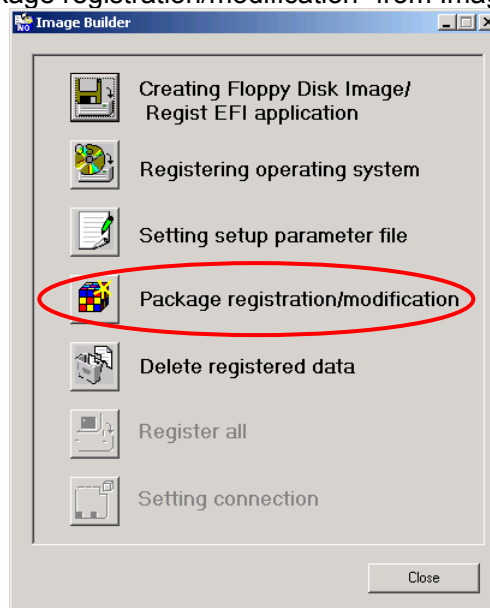
This section describes the procedure for shifting into the silent mode that enables delivery by DPM.

**Tips** This section describes the procedure using DPM4.1 as an example. And according to the version, there are some screens which are different, please referring to the later configuration settings.

- (1) Copy the files in “**Windows Server 2003 RUR2**” into an arbitrary local folder that you created.  
In this example, copy the files into “**RUR2**” folder which is directly under the E drive.
- (2) Edit "RUR.INF" in the "RUR2" folder with an appropriate text editor such as Notepad[RUR2] and save it.  
For the detail of each parameter, refer to **step (4)** " Explanation of parameters" in[**2. Applying Windows Server 2003 RUR2 in silent mode**](P.15).



- (3) From the "Start" menu, select " All Programs " → "DeploymentManager" → "Image Builder". Click "Package registration/modification" from Image Builder.



- (4) Select “Create Windows package” from the “File” menu in the “Package registration/modification” screen.

- (5) Set each item in the “Basic”, “Execution Settings” and “Applicable OS and language” tab.

It's not necessary to set the other items except followings.

- [Basic] tab

- Package ID

It's the ID number combined with package. Input alphanumeric character, “-” or “\_” within 63 bytes.

You must input this field.

- Company name

It is the name of the publisher that issues the package. Input within 127 bytes.

- Release date

Input the release date of the package. Input by the format of AD/Month/Day.

**Tips**

- If input invalid Release date, it will be ignored or corrected automatically.
- Input four-digit for the year of Release date, two-digit for the month and day.

- Package summary

Input summary information of the package. Input within 511 bytes.

- Type

Specify “**Service pack**”.

- Urgency

Specify “**Normal**”.

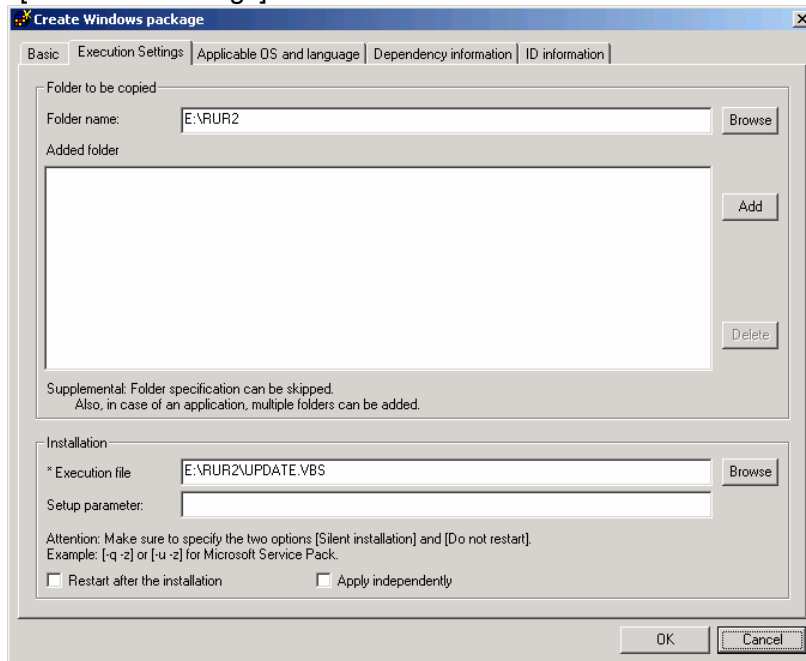
- Major version

Specify “**2**”. You must input this field.

- Minor version

Specify “**0**”. You must input this field.

• [Execution Settings]tab



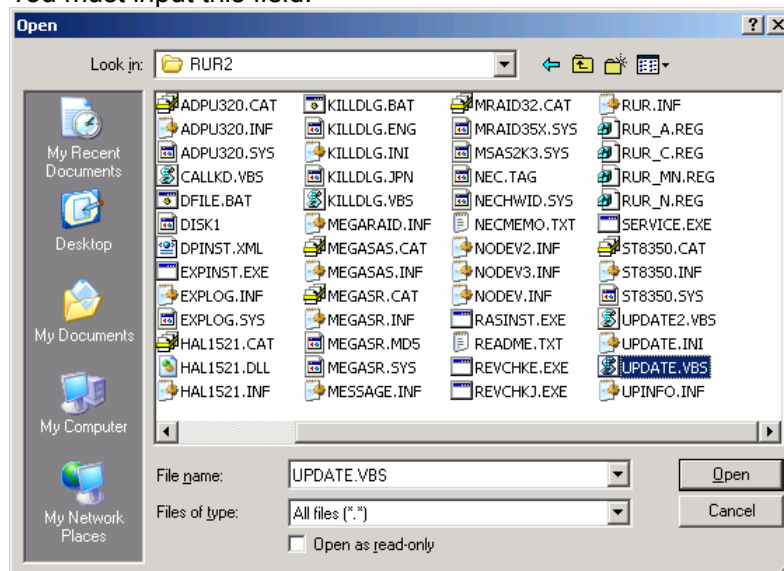
- Folder name  
Specify the copied folder.  
By clicking “Browse” button, you can specify folder.

**Note**

- UNC(Universal Naming Convention) format(\\“machine name”\“share folder”\“sub directory”)is disabled in the “Folder name”. Assign drive letter by “Assign network drive”.
- The patch is registered at the folder unit. Within one folder, only one batch application can be contained.

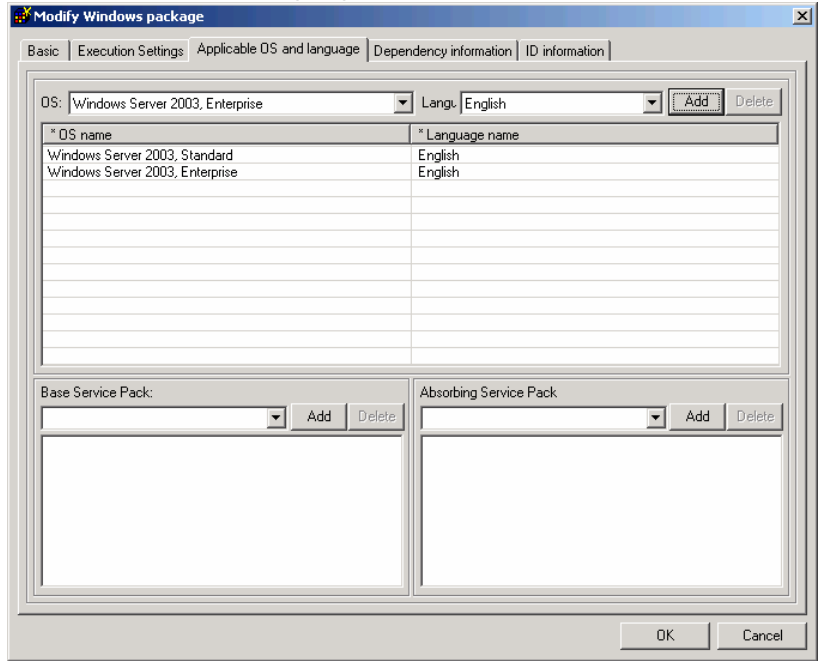
- Added folder  
Click “Add” button, add the folder specified in the “Folder name”.

- Execution file  
Specify“E:\RUR2\UPDATE.VBS”.  
When click “Browse” button to specify file, change [Files of type] to [All Files] and specify “UPDATE.VBS”.  
You must input this field.



**Important** Don't register a file where %xx(xx is hexadecimal number 0-f)Example:file%9d.exe)is contained to Execution file name. If there's %xx in the package, it can't be downloaded to management server correctly.

· [Applicable OS and language]tab



- "OS" and "Lang"  
Select OS and Language which apply the package. Please appoint below two.


OS	Language
Windows Server 2003, Standard	English
Windows Server 2003, Enterprise	English

- "Add" button of OS and Lang  
Add selected "OS" and "Lang".

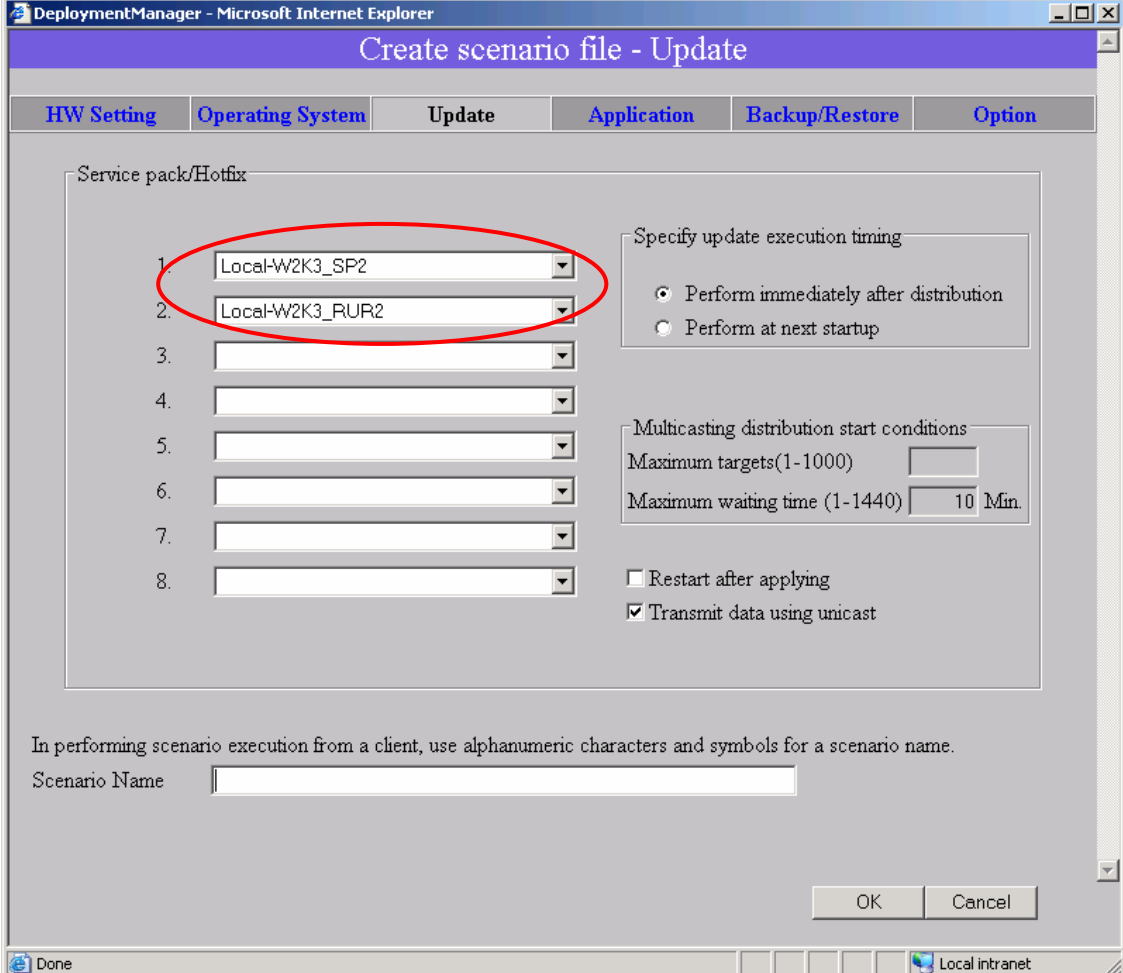
With this operation, shifting Windows Server 2003 RUR2 into the silent mode is completed.

### 3. Applying Windows Server 2003 Service Pack 2 and Windows Server 2003 RUR2

- (1) Start DPM.
- (2) On the “Scenario” menu of the Main Window screen, choose “Create Scenario” to display the Scenario File Create screen.

You can display the same screen by clicking the  icon on the Main Window screen.

- (3) Click the “Update” tab and select Windows Server 2003 Service Pack 2 and Windows Server 2003 RUR2 registered in Steps 2 and 3 from the pull down menu to create a scenario.



DeploymentManager - Microsoft Internet Explorer

Create scenario file - Update

HW Setting    Operating System    **Update**    Application    Backup/Restore    Option

Service pack/Hotfix

1. Local-W2K3\_SP2

2. Local-W2K3\_RUR2

3. [ ]

4. [ ]

5. [ ]

6. [ ]

7. [ ]

8. [ ]

Specify update execution timing

Perform immediately after distribution

Perform at next startup

Multicasting distribution start conditions

Maximum targets(1-1000) [ ]

Maximum waiting time (1-1440) [ 10 Min.]

Restart after applying

Transmit data using unicast

In performing scenario execution from a client, use alphanumeric characters and symbols for a scenario name.

Scenario Name [ ]

OK    Cancel

Done    Local intranet

**Note**

- Create a scenario so that the image files are applied at the same time.
- Specify the files so that the service pack is applied before Windows Server 2003 RUR2 is executed. (Among files 1 to 8, the execution starts from file 1 and goes on.)

**Tips** After rebooting the computer, “Windows Server 2003 Service Pack 2”, and “Windows Server 2003 RUR2” becomes effective. If you want to reboot computer immediately after execution of the scenario, check the “Restart after applying” box.



- (4) Assign the scenario created in (3) to the target unit and execute the scenario.

With this operation, applying Windows Server 2003 Service Pack 2 and Windows Server 2003 RUR2 is completed.

- Important**
- When SCSI HostRAID is used, “setting of bootable array system” is required to the array that boots the system by the BIOS of SCSI HostRAID. After applying **Windows Server 2003 RUR2**, refer to **“Setting of SCSI HostRAID-bootable array system” (P.6)** and perform the setting. If the above setting is not done, such problems as the memory dump cannot be collected at fault occurrence are caused.
  - If Windows Server 2003 RUR2 is applied to the system using SATA HostRAID, at the time of system restart after the applying, search wizard might be started. When search wizard is started, refer **“When using SATA HostRAID” (P.7)** to install driver.

## Troubleshooting

When the Express5800 series do not operate as desired, check the Express5800 series according to the following checklist before asking for repair.

If one of the symptoms in the list is detected, follow the subsequent checking and processing. If still it does not operate normally, record the message displayed on the screen and contact the maintenance service office.



Applied Windows Server 2003 Service Pack 2 without applying Windows Server 2003 RUR2.

→ Only apply the Difference Module.

For the detail procedure, refer to the step (5) "To apply Windows Server 2003 RUR2" in the "1. Applying Windows Server 2003 RUR2" of this manual.



The "Windows Server 2003 Service Pack 2" which is downloaded from the web site is unusable.

→ Does the downloaded file(\*\*.exe) be extracted ?

It is unnecessary to extract the downloaded file(\*\*.exe).

Use it directly without extraction.

## About the applied module with Windows Server 2003 RUR2

The module applied with Windows Server 2003 RUR2 is as follows.

1. Mraid35x.sys (6.32.2.32) : N8103-80F/81F,SCSI ROMB Driver  
EXPRESSBUILDER Version4.133x-N previous model  
(Except EXPRESSBUILDER Version4.132x-N)
2. Adu160m.sys (NT51\_6S3(Internal name:RTC\_u160\_NT51\_6S3 V218A24B13\_RTC05S1))  
: N8103-56F/95,On-Board SCSI(AIC-7899)
3. Adu320.sys (PH3.0S2(Internal name:PH 3.0 MS\_V98S2 V564 bw01))  
: N8103-75,On-Board SCSI
4. Aarich.sys (6.075.1.7dND) :The latest driver which supports SATA  
HostRAID(Olympia)  
Target Model:The following EXPRESSBUILDER target device.  
- EXPRESSBUILDER Version3.111x-N  
- EXPRESSBUILDER Version3.115x-N  
- EXPRESSBUILDER Version3.116x-N
- Aarich.sys (6.075.1.7dD) :The latest driver which supports SATA  
HostRAID(Pelicanhil)  
Target Model:Other models which is not supported by  
Aarich.sys (6.075.1.7dND)
5. St8350.sys (2.9.70.8) :The latest driver which supports N8103-101
6. Msas2k3.sys (1.20.0.32) :The latest driver which supports N8103-90/91/99  
SASROMB
7. Megasr.sys (4.20.526.2006) :Driver supports SAS SWRAID  
Target Model:EXPRESSBUILDER Version4.146x-N
8. A320raid.sys (1.02.069AB3) : Driver supports SCSI HostRAID

9. explog.sys (Rev 7.0.21.58) : Exceptional Target Model  
100 series  
Express5800/ 110Ek,110Rh-1,120Rg-1,120Ri-2  
120Eh,120Li,140Hf,140Re-4,180Re-3,  
110Rg-1,110Ej,120Eg,110Ei,110Eh,  
180Rd-4  
Blade server  
Express5800/ 120Bb-d6, 120Bb-m6, 120Bb-6
10. necras.sys (Ver5.10.8.0) :Target Model  
100 series  
Express5800/ 120Rd-1,120Rf-2,  
140Hd,140Rc-4,  
120Mf,120Lg,120Rb-1,120Rd-2  
Blade server  
Express5800/ 120Ba-4
11. hal.dll (1.41.0.0) :Target Model: Express5800/180Rc-4, 180Rd-4  
Replaced automatically only when the version of the  
driver is old.
12. REVCHK.EXE (Ver 1.08) :Windows Service 2003 RUR2 (Service Pack2)  
All supported target models.