

# **NEC ESMPRO Agent Ver. 4.6 Installation Guide (Windows)**

<b>Chapter1</b>	<b>Introduction</b>
<b>Chapter2</b>	<b>NEC ESMPRO Agent</b>
<b>Chapter3</b>	<b>System Requirements</b>
<b>Chapter4</b>	<b>Before Installation</b>
<b>Chapter5</b>	<b>Installation</b>
<b>Chapter6</b>	<b>After Installation</b>
<b>Chapter7</b>	<b>Uninstallation</b>
<b>Chapter8</b>	<b>Notes</b>
	<b>Appendix</b>

---

---

# Contents

---

---

Contents.....	2
Abbreviations of Operating Systems.....	3
Trademarks.....	4
Warnings and Additions to This Document.....	5
<b>1.</b> Introduction.....	6
<b>2.</b> NEC ESMPRO Agent.....	7
<b>3.</b> System Requirements.....	8
<b>4.</b> Before Starting Installation.....	9
<b>4.1</b> Installing the Starter Pack.....	9
<b>4.2</b> TCP/IP Setting.....	9
<b>4.3</b> Installing the SNMP Service.....	10
<b>4.4</b> SNMP Service Setting.....	11
<b>4.5</b> Installing the RAID System Management Utility.....	13
<b>5.</b> Installation.....	14
<b>6.</b> After Installation.....	16
<b>6.1</b> Port Setting.....	16
<b>6.2</b> Setting of operation of NEC ESMPRO Agent.....	16
<b>7.</b> Uninstallation.....	17
<b>8.</b> Notes.....	18
<b>8.1</b> Event log.....	18
<b>8.2</b> Hard disk drive / RAID system / File system.....	20
<b>8.3</b> I/O device.....	21
<b>8.4</b> Hardware.....	23
<b>8.5</b> SNMP.....	24
<b>8.6</b> System.....	24
<b>8.7</b> System environment.....	25
<b>8.8</b> Coexistence with another product.....	26
<b>8.9</b> Report.....	27
<b>8.10</b> OS dependence.....	28
<b>8.11</b> Others.....	30
Appendix.....	32

# Abbreviations of Operating Systems

Windows Operating Systems are referred to as follows.

Notations in this document	Official names of Windows
Windows Server 2012	Windows Server 2012 Standard Windows Server 2012 Datacenter
Windows Server 2008 R2	Windows Server 2008 R2 Standard Windows Server 2008 R2 Enterprise Windows Server 2008 R2 Datacenter Windows Server 2008 R2 Foundation
Windows Server 2008	Windows Server 2008 Standard Windows Server 2008 Enterprise Windows Server 2008 Datacenter Windows Server 2008 Standard 32-bit Windows Server 2008 Enterprise 32-bit Windows Server 2008 Datacenter 32-bit
Windows Server 2003 R2	Windows Server 2003 R2 Standard x64 Edition Windows Server 2003 R2 Enterprise x64 Edition Windows Server 2003 R2 Standard Edition Windows Server 2003 R2 Enterprise Edition
Windows Server 2003	Windows Server 2003 Standard x64 Edition Windows Server 2003 Enterprise x64 Edition Windows Server 2003 Standard Edition Windows Server 2003 Enterprise Edition
Windows 8	Windows 8 Pro 64-bit Edition Windows 8 Pro 32-bit Edition
Windows 7	Windows 7 Professional 64-bit Edition Windows 7 Professional 32-bit Edition
Windows Vista	Windows Vista Business 64-bit Edition Windows Vista Business 32-bit Edition
Windows XP	Windows XP Professional x64 Edition Windows XP Professional

---

---

# Trademarks

---

---

EXPRESSCLUSTER is a registered trademark of NEC Corporation.

Microsoft, Windows, Windows Vista, and Windows Server are registered trademarks or trademarks of Microsoft Corporation in the United States and other countries.

MegaRAID is a registered trademark of LSI Corporation.

All other product, brand, or trade names used in this publication are the trademarks or registered trademarks of their respective trademark owners.

---

---

## **Warnings and Additions to This Document**

---

---

1. **Unauthorized reproduction of the contents of this document, in part or in its entirety, is prohibited.**
2. **The contents of this document may change without prior notice.**
3. **Do not make copies or alter the document content without permission from NEC Corporation.**
4. **Every effort has been made to ensure the completeness of this document. However, if you have any concerns, or discover errors or omissions, please contact your retailer.**
5. **Regardless of these 4 items, NEC Corporation assumes no responsibility for effects resulting from operations.**
6. **The sample values used in this document are not the actual values.**

---

# 1. Introduction

---

This document describes NEC ESMPRO Agent.

Before attempting to operate the server management utility NEC ESMPRO Agent, read this document so as to gain an adequate understanding of the contents.

The contents in this document are intended for users who fully understand features and operations of operating systems related to this utility.

If you want to know operations of the operating systems, or if there is any unclear point, see the online help of each operating system.

## ◆Notations used in the text

In addition to safety-related symbols urging caution, 3 other types of notations are used in this document. These notations have the following meanings.



Indicates critical items that must be followed when the operating software.



Indicates items that must be confirmed when the operating software.



Indicates information that is helpful to keep in mind when using this server.

---

## **2. NEC ESMPRO Agent**

---

NEC ESMPRO lets a system administrator manage remote servers across a network. NEC ESMPRO monitors server hardware and software configurations, failures, and performance. With log data collected by NEC ESMPRO, a system administrator can track long-term and short-term performance, monitor server usage, create graphs to record trends, and check server failure rates. The administrator can use the information collected to create more efficient data routing procedures and optimize server usage.

NEC ESMPRO consists of NEC ESMPRO Manager that runs on a "PC for Management" and NEC ESMPRO Agent that runs on a monitored server.

About NEC ESMPRO Manager, refer to the NEC ESMPRO Manager Installation guide.

---

## **3. System Requirements**

---

NEC ESMPRO Agent requires the following hardware and software:

- Hardware
  - Machine Express5800 series
  - Memory Memory required for running the operating system plus 80MB or more
  - Free hard disk drive space 50MB or more
- Software
  - Operating system Windows Server 2012  
Windows 8
  - OS component TCP/IP  
SNMP(Simple network management protocol)



---

## 4. Before Starting Installation

---

Be sure to read this page before installing NEC ESMPRO Agent.

You should be setting the some components before installing NEC ESMPRO Agent.

---

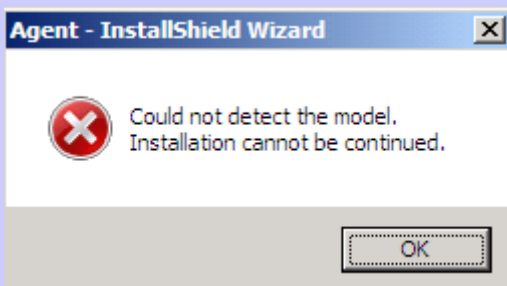
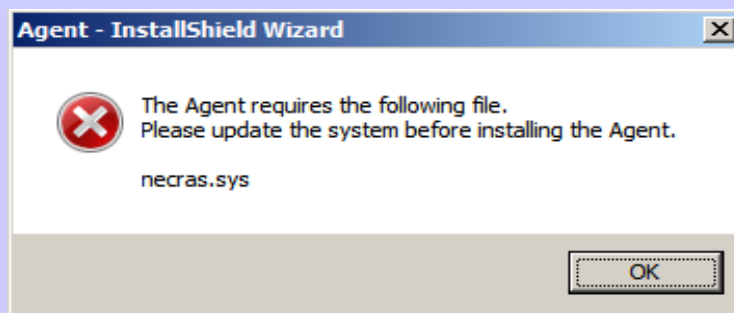
### 4.1 Installing the Starter Pack

---

On Windows systems, the NEC ESMPRO Agent needs the "necras.sys" driver and "NECHWID.exe" driver. To install the "necras.sys" driver or "NECHWID.exe" driver, install the Driver Set(Service Pack).

When you install NEC ESMPRO Agent without installing "necras.sys" or "NECHWID.exe", the following messages are displayed and the installation of NEC ESMPRO Agent is discontinued.

Install the Driver Set(Service Pack) first.



---

### 4.2 TCP/IP Setting

---

Set a static IP address for the server.

See the Help from the Windows for how to set TCP/IP.

---

## 4.3 Installing the SNMP Service

---

The installing of the SNMP Service is described below.

### ◆Notes installing the SNMP Service:



During OS installation, if the SNMP service is added to the system after applying the service package, apply it again. If not, the SNMP service may not operate properly, and this can cause the improper operation of NEC ESMPRO Agent.

### ◆Windows Server 2012

1. Click [Programs and Features] in [Control Panel].
2. Click [Turn Windows features on or off].

"Add Roles and Features Wizard" window appears.

3. Click [Features].

[Features] but when it's gray indication, and it can't be clicked, when [Next] is being clicked, it starts to be indicated.

4. Check the [SNMP Service] check box.

5. Click [Next].

6. Click [Install].

Installing, it becomes more effective, it starts.

7. Click [Close].



In the case of Windows Server 2012 Server Core installation, execute the following commands by the command prompt.

```
"Dism /online /enable-feature /featurename:SNMP"
```

### ◆Windows 8

1. Click [Programs and Features] in [Control Panel].
2. Click [Turn Windows features on or off].
3. Click the [SNMP feature] check box.
4. Click [OK].

---

## 4.4 SNMP Service Setting

---

The settings of the SNMP Service is described below.

### ◆Setting preparation of SNMP service

The setting change of the SNMP service of the server that executes, the Server Core installation is done from the PC for Management by way of the network.

At the times other than Server Core installation, the work of Starting property is unnecessary. according to the following (◆To change the settings of the SNMP Service) steps.

**1. Connected preparation is done on the server side.**

Execute the following commands by the command prompt on the server side.

- Windows Server 2008 Server Core installation

```
"netsh firewall set service FILEANDPRINT enable SUBNET"
```

```
"netsh firewall set service REMOTEADMIN enable SUBNET"
```

- Windows Server 2008 R2 Server Core or later installation

```
"netsh advfirewall firewall set rule group="File and Printer Sharing" new enable=Yes"
```

**2. Install the SNMP service onto the PC for Management.**

**\*After this item you operate it with the PC for Management.**

About the method of installing the SNMP service, see "Installing the SNMP Service".

**3. The session from the PC for Management to the server is established.**

Execute the following commands by the command prompt on the PC for Management side.

```
"Net use * ¥¥ <ServerName> ¥c$ /u: <UserName> "
```



<ServerName> is a name of the server that executes the Server Core installation.

<UserName> is a name of the Administrative account.

**4. Click the "Control Panel", and double click "Administrative Tools" icon.**

**5. Right-click on the "Computer Management" from the tree on the left pane.**

Click the "Connect to another PC..."

**6. The computer name of the server that executes the Server Core installation is input to "Select Computer" box, and click the "OK" button.**

It is connected with "Computer Management" of the server that executes the Server Core installation.

## ◆To change the settings of the SNMP Service

1. Double-click [Administrative Tools] in [Control Panel].
2. Double-click [Services].
3. Click [SNMP Service] from the service list and then [Properties] in the [Action] menu.

The "SNMP Properties" dialog box appears.

4. Enter "public" or an arbitrary name in the [Community name] box of the [Traps] property sheet and click [Add to list].

To change the community name of traps to be received from the default "\*" in NEC ESMPRO Manager site, enter the same name as the community name newly set in NEC ESMPRO Manager site.

To receive trap from NEC ESMPRO Agent at NEC ESMPRO Manager machine, both community names should be the same.

5. Click [Add].
6. Click the [Add...] button in [Trap destinations]. After entering the IP address of the NEC ESMPRO Manager machine of the send destination in the [Host name, IP or IPX address] box, click the [Add] button.

If you specify the same IP address (or host name) specified on the trap destination also for the Manager Alert (TCP/IO) setting, a warning message appears to indicate redundancy. With this configuration, the alert is redundantly sent to NEC ESMPRO Manager of a specified IP address (or host name).

7. Open the [Security] property sheet and click the [Add] button [Accepted community names].
8. Set its authority to [READ CREATE] or [READ WRITE], click the [Add] button.

If you do not set the authority of [Accepted community names] as "READ CREATE" or "READ WRITE", you cannot perform configuration or monitoring from NEC ESMPRO Manager.

9. Click Select [Accept SNMP packets from any host].

### - Setup of receiving SNMP packets from specific communities only.

Change the name of the community receiving SNMP packets from the default "public" to any name. If the community name is changed, the community of NEC ESMPRO Agent is changed and registered by starting from [Control Panel]. To change the community to another and register it, use the [SNMP Community] list box in the [General] tab.



To allow NEC ESMPRO Agent to receive SNMP packets sent from NEC ESMPRO Manager, set the send community name in NEC ESMPRO Manager to be the same as that accepted by the SNMP Service in NEC ESMPRO Agent.

### - Setup of receiving SNMP packets from specific hosts only.

Select [Accept SNMP packets from these hosts], specify IP addresses of the hosts, IP addresses of the servers to install NEC ESMPRO Agent, and the loop-back address (127.0.0.1).

10. Click [OK] Terminate the network setup.

#### ◆Notes after SNMP service setting:



- Some software products provided by other vendors may change the SNMP Service configuration. If you install NEC ESMPRO Agent on the system under the condition where these types of software are already installed, NEC ESMPRO Agent service may not work properly.

In such a case, delete the SNMP Service once and then install the service again. Afterward, reinstall NEC ESMPRO Agent and the software products provided by other vendors.

- If you change SNMP Service setting while NEC ESMPRO Agent is running, NEC ESMPRO Agent may not monitor the RAID System.

In such a case, restart the ESMDiskArray Service.

---

## **4.5 Installing the RAID System Management Utility**

---

RAID System Management Utility is required to monitor the RAID System with NEC ESMPRO Agent.

Before installing NEC ESMPRO Agent make sure that RAID System Management Utility has been installed.

If RAID System Management Utility is not installed, Install it according to the manual.

---

## 5. Installation

---

The installation of NEC ESMPRO Agent is described below.

### ◆Notes before installation:



- Start installing after the system starts completely.
- If installation is conducted right after the system startup, it may fail. Wait for a while and retry if the error message appears.

### ◆ Installation

1. **Signin as an administrator.**
2. **A downloaded setup program is defrosted.**

Save the downloaded "SA46-W\_E.zip(or SA46-WS\_E.zip)" file in a folder of your choice, and unzip it.



- Use the shallow hierarchy (C:¥TEMP) for a folder.
- When the hierarchy of the folder is too deep, a setup program isn't defrosted right.

3. **Click the setup program "¥SA46-W\_E(or SA46-WS\_E)¥AGENTW2K¥setup.exe".**

Setup screen of NEC ESMPRO Agent starts.

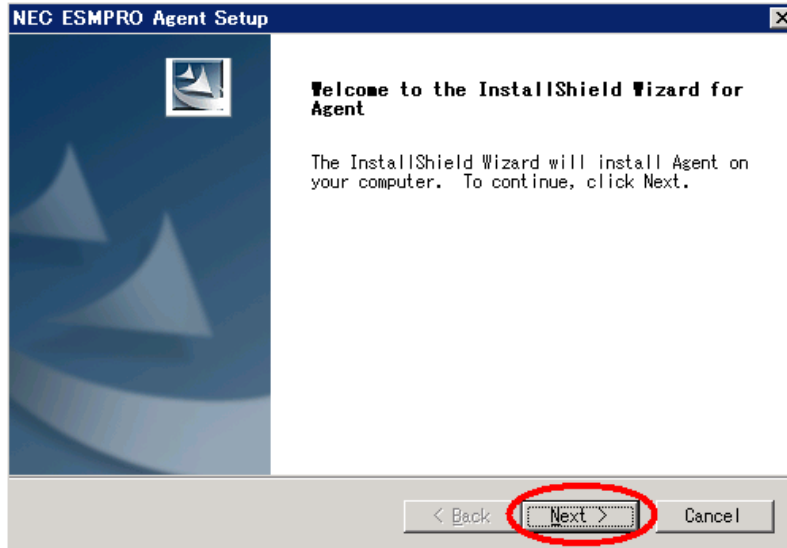


- It's the drive after a network drive is allocated when installing from a drive on the network, click "SA46-W\_E (or SA46-WS\_E), ¥AGENTW2K¥setup.exe". Don't start from a network computer of Explorer.
- If you click the [Cancel] button during setup, the message asking whether to stop or not to stop the installation will appear. You can stop the installation by clicking on the [Stop] button (the main menu remains displayed). However, the file having been setup halfway will not be deleted.
- Windows installer may rarely cause error during installation, and the setup program execution may fail.

**4. Click [Next].**

The setup program determines the machine type automatically.

If the setup program is unable to determine the system model, the install of NEC ESMPRO Agent will be stopped.



**5. Enter the path in which NEC ESMPRO Agent is installed and click the [Next] button.**

The NEC ESMPRO Agent module is installed below the ESM directory of the root partition in default. If no problem is found, click the [Next] button without any modification.

To change the installation directory, click the [Reference] button, specify the desired installation directory with the full path including the drive name, and click the [Next] button.

**6. When the installation end window appears, click the [Finish] button.**

The installation completed. The functions of installed NEC ESMPRO Agent becomes enabled after a restart of OS.

**◆Notes on installation:**



- After the installation of NEC ESMPRO Agent, SNMP Service is stopped. The SNMP Services will be started when the OS is restarted.
- Even if the installation of NEC ESMPRO is completed, the main menu for the NEC ESMPRO setup remains displayed. Note that the main menu may be hidden by another dialog box. To terminate the NEC ESMPRO setup, click [End] in the main menu.
- Windows 7 / Windows Server 2008 R2 or later installing NEC ESMPRO Agent the message that "Windows Explorer has stopped working" might be displayed. However, installation was normally completed. The system doesn't have the influence.

---

## 6. After Installation

---

Be sure to read this page after installing NEC ESMPRO Agent.

---

### 6.1 Port Setting

---

When the setting of the firewall is effective, port (161/UDP) that SNMP uses is blocked.

In this case, because NEC ESMPRO Agent cannot communicate with NEC ESMPRO Manager, the server cannot be monitored from NEC ESMPRO Manager.

Open the port according to the following procedures.

#### ◆Windows Server 2008 Server Core or later

1. Execute the following commands by the command prompt.

```
"netsh advfirewall firewall set rule name="SNMP Service (UDP In)" new remoteip=any"
```

```
"netsh advfirewall firewall set rule name="SNMP Service (UDP Out)" new remoteip=any"
```

2. Close the command prompt.

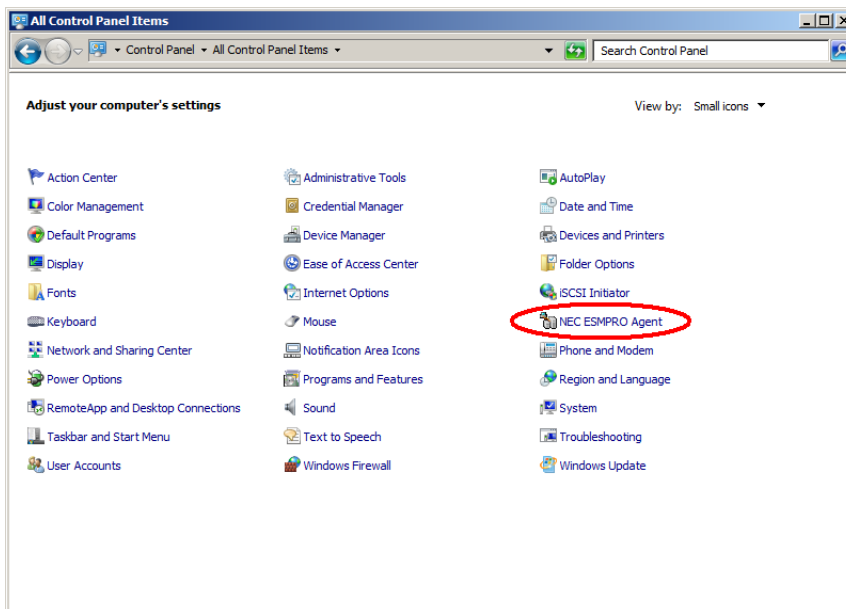
---

### 6.2 Setting of operation of NEC ESMPRO Agent

---

To change settings of NEC ESMPRO Agent, use Property of NEC NESMPRO Agent from Control Panel.

The setting items on Property of NEC ESMPRO Agent are different by the model.





---

## 7. Uninstallation

---

The uninstallation of NEC ESMPRO Agent is described below.

### ◆Notes before uninstallation:



- Start uninstalling after the system starts completely.
- Uninstallation performed immediately after the system restarts may fail.  
If an error message appears, try again after waiting for a while.

### ◆ Uninstallation from Control Panel

1. Click [Programs and Features] from [Control Panel].
2. Select [NEC ESMPRO Agent] and click [Uninstall/Change].
3. When the uninstallation end window appears, click the [Finish] button.

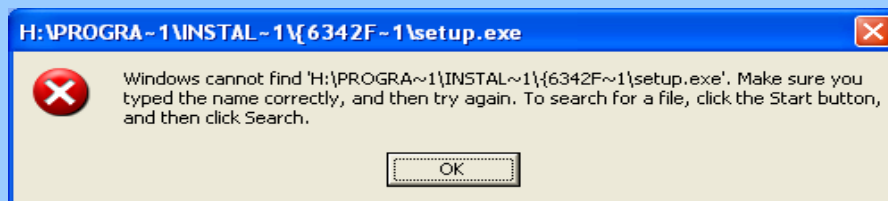
The uninstallation completed.

### ◆Notes on uninstallation:

- If uninstallation is conducted right after the system startup, it may fail. Wait for a while and retry if the error message appears.

A [AMIRTUpt.dll] file may remain solely in the installation folder. In this case, delete it manually. If files other than [AMIRTUpt.dll] also remain, do not delete them.

- Due to an InstallShield 2008 failure, the following error message may be displayed only at the first startup after uninstallation.



- If you uninstall NEC ESMPRO Agent on Windows 7 / Windows Server 2008 R2 or later, an error message indicating that Explorer has stopped may be displayed. However, uninstallation completes normally, and the system is not affected.

---

---

## **8. Notes**

---

---

---

### **8.1 Event log**

---

#### **◆LAN Monitoring Report**

The LAN monitoring function defines the line status depending on the number of transmission packets and the number of packet errors within a certain period. Thus, the LAN monitoring function may report a line fault or high line load only in a temporary high line impedance state. If a normal state recovery is reported immediately, temporal high line impedance may have occurred thus there is not any problem.

#### **◆Event log which warn CPU load monitoring is registered**

If NEC ESMPRO Agent cannot acquire performance information from the OS due to a temporary resource shortage or high load ratio on the system, it will record the following event log. However, there is no real problem on operation (In the description, Y and X represent alphanumeric characters).

Source	:	ESMCpuPerf
Event ID	:	9005
Level	:	Information
Description	:	Cannot get system performance information now (YYYY Code=xxxx).

If NEC ESMPRO Agent cannot get information, it will treat the load ratio as 0%.

Therefore, if NEC ESMPRO Agent cannot get information continuously, the CPU load ratio may appear lower than the actual value.

## ◆The monitoring event is not alerted

- The alert function is based on the event information registered in the event log of the system.

Thus, set the event log process on the event viewer to [Overwrite events as needed]. The monitoring event is not alerted in the setting other than that.

- The event registered in the monitoring event tree on the setting tool of alert function (Alert Manager) is not alerted to the manager if Alert Manager Main Service does not operate. Even when the service is operating, if the enabled/disabled flag of each alerting ways is disabled, the event is not alerted.

The alert enabled/disabled flag is set by selecting [Base Setting] - [Report] Properties from [Setting] of Alert Manager. Also the event occurred before Eventlog Service started at the time of system startup cannot be alerted.

- You can set the time to the shutdown by selecting [Base Setting] - [Other] on the setting tool of the alert function (Alert Manager). The initial value is 20 seconds.

When you set smaller value than this, the alert may not be performed at the time of shutdown.

- When an alert failure occurs at the time of alerting of monitoring target event, an error message is logged in the event log. If you newly log the error message which occurs at the time of alerting as a monitoring target event, the error at the time of alerting will be alerted again.

As a result, large number of alerts will be sent when recovering the failure. This leads to the increase of system load and the degradation of the performance. Do not register the events especially which are produced by the following alert function services as the monitoring target.

Alert Manager Main Service

Alert Manager Socket(S) Service

## ◆Application log registered when system starting

\* About the event of "Source: Perflib".

When system is starting, Perflib log may be registered to the application log.

The detailed information about an event log is described on Microsoft Product Support Services.

Please check the contents.

- Events for Performance Monitor Extensions

<http://support.microsoft.com/default.aspx?scid=kb;en-us;226494>

- Application Log Events Generated When You Start Performance Counter Query

<http://support.microsoft.com/default.aspx?scid=kb;en-us;296187>

- Event ID 2003 Warning Message Logged When Loading Performance Counters

<http://support.microsoft.com/default.aspx?scid=kb;en-us;267831>

Visit the Microsoft Help and Support on regular basis where you can find other information than the above at

<http://support.microsoft.com/default.aspx?LN=en-us>.

## ◆Event log monitoring

Events displayed on Alert Manager can be monitored.

Events that are not displayed on Alert Manager cannot be monitored.

Example)

You cannot monitor the following new events since Windows Vista / Windows Server 2008(Windows Eventing 6.0).

Events that a channel is not defined in metadata.

---

## **8.2 Hard disk drive / RAID system / File system**

---

### **◆"NEC ESMPRO Agent ESMDiskArray"**

"NEC ESMPRO Agent ESMDiskArray" is installed also in the system in which a RAID controller does not exist.

(Monitoring is not performed while the status of service "ESMDiskArray" is "Started".) In this case, do not use the "NEC ESMPRO Agent ESMDiskArray Console" which performs of monitoring interval and maintenance of "NEC ESMPRO Agent ESMDiskArray".

(When click a [NEC ESMPRO Agent ESMDiskArray], and a [Console], the console displays the message which shows that the RAID controller for a monitor does not exist.)

### **◆Monitoring the failures of the tape device is desired**

NEC ESMPRO Agent does not monitor the failures of the tape device. If you want to conduct monitoring, use backup software or tape monitoring application. Using the event monitoring function of NEC ESMPRO Agent allows you to monitor the event log of backup software or applications.

### **◆Changing setting of storage monitoring**

The following setting will not take effect until one (old) monitoring interval cycle of each monitoring service passes after changes are made to setting.

sampling interval (Polling Frequency tab of storage setting) reset (Reset tab of storage setting and Reset button on Hard Disk General view in [Information of server state/constitution] of NEC ESMPRO Manager) hard disk pre-failure prediction mode (HD Pre-failure tab of storage setting) thresholds of free block monitoring (Free Space tab of storage setting and threshold button on File System General view in [Information of server state/constitution] of NEC ESMPRO Manager).

### **◆Changing mode of hard disk pre-failure prediction**

Turning on/off the mode of hard disk pre-failure prediction, all hard disks work in the same mode in either case. You can not set the mode of each hard disk individually.

### **◆Storage Devices other than SCSI/IDE Device**

NEC ESMPRO Agent does not monitor storage devices other than SCSI/IDE devices (e.g., an USB device).

### ◆Display of the [Information of server state/constitution] of NEC ESMPRO Manager when a Hard Disk Drive is connected

In the case of using the LSI RAID system, even if you connect a Hard Disk Drive to the RAID Controller, the connected Hard Disk Drive may not be displayed of the [Information of server state/constitution] of NEC ESMPRO Manager. In such a case, recognize the Hard Disk Drive by the RAID system configuration.

### ◆Network drive is not displayed of the [Information of server state/constitution] of NEC ESMPRO Manager

The drive connected to network is not displayed under the file system tree in the [Information of server state/constitution] of NEC ESMPRO Manager.

### ◆Information displayed in "Resource" of SCSI controller

In the following cases, check the information of resource using "Device Manager" and "System Information (winmsd.exe)" of OS.

#### - x64 Edition

Incorrect information may appear in the [Resource] window displayed from [SCSI Controller] of [Information of server state/constitution] of NEC ESMPRO Manager.

#### - Windows Vista / Windows Server 2008 or later

I/O port information does not appear in the [Resource] window displayed from [SCSI Controller] of [Information of server state/constitution] of NEC ESMPRO Manager.

### ◆Display of the [Information of server state/constitution] of NEC ESMPRO Manager when the RAID System is changed

When a Physical Device and a Logical Device are added or are deleted when immediately after the installation of NEC ESMPRO Agent and the RAID System are maintaining it, it takes time of a few minutes until information is displayed of the [Information of server state/constitution] of NEC ESMPRO Manager.

### ◆SATA Optical disk drive

In the case of using the LSI Embedded MegaRAID, information of SATA Optical disk drive does not displayed of the [Information of server state/constitution] of NEC ESMPRO Manager.

---

## ***B.3*** I/O device

---

### ◆Floppy Disk Drive Information

If you add or delete floppy disk drive connected with USB while the OS is running, the drive information under the [I/O Device] of the [Information of server state/constitution] of NEC ESMPRO Manager will be updated at the next system startup.

## ◆Serial Port

For the models supporting serial ports, note the following.

NEC ESMPRO Agent has multiple features that use serial ports.

When using these features, the ports may become insufficient.

The serial ports available for each feature are as follows.

- UPS : COM1-10
- APCU : COM1-2
- ALIVE Maintenance\* : COM1-9

\* Alive Maintenance uses Remote Access Service.

The available serial ports when using Remote Access Service for Manager Report (TCP/IP Out-of-Band) are as follows.

- Manager Report: COM1-10

Among those above, only the following combination can share the serial ports.

- Alive Maintenance + Remote Access Service used by a user

When one of the features uses the line, the other feature cannot be used.



Manager Report (TCP /IP Out-of-Band), which uses Remote Access Service, may be unable to notify failure information when sharing other serial port. Ensure not to share serial ports.

## ◆Printer Information's Available Time

When you add a new printer, install its driver and make its settings, if you do not make settings for the available time from Add Printer Wizard, the printer's available time (From and To) in [Printers and Faxes] are [00:00], on the other hand, Manager's time are [9:00]. To display them properly, make the settings of printer from [Printers and Faxes]. The procedures are as follows;

1. **Right-click the printer you want to make settings for and click [Properties].**
2. **Click the [advanced]tab and enter values in the available time.**
3. **Click [OK].**

Now, you can see the correct information from Manager, too.

## ◆Information of the keyboard/mouse connected with USB

When the keyboard or mouse is connected with USB, the keyboard or mouse information under the [I/O Device] of the [Information of server state/constitution] of NEC ESMPRO Manager is listed as "Unknown".

## ◆I/O device information on the Multi monitor system

If you use the multi monitor system with the additional graphic accelerator board, the information of the only monitor 1 is displayed on the I/O device view of the [Information of server state/constitution] of NEC ESMPRO Manager.

### ◆Refresh rate of display adaptor

If you selected [use default setting of hardware], the value of the refresh rate is '1Hz' under the [I/O Device], display adaptor name on [Information of server state/constitution] of NEC ESMPRO Manager.

\* The setting of the screen refresh rate can be confirmed by of property on the screen.

([setting] tab - [Advanced] - [monitor] tab - [screen refresh rate])

\* It is set to the use of a default setting of hardware by the refresh rate of the screen when the monitor name is displayed as 'Generic PNP Monitor'.

### ◆Display information

If the OS of Agent computer is Windows 7 or Windows8, following items may be "Unknown" in display information on NEC ESMPRO Manager.

- Refresh rate
- Vertical/horizontal resolution
- Pixel

### ◆RAM size of a display adapter

Depending on the kind of OS or video driver of Agent computer, the value of the RAM size may not be right under the [I/O Device], display adaptor name on [Information of server state/constitution] of NEC ESMPRO Manager.

### ◆Information display of a serial port

When watch target OS is Windows 8 (64 bit edition) or Windows Server 2012, indication of the following item of the serial port information on ESMPRO/ServerManager is indicated with "unknown".

- IRQ
- I/O Address
- I/O Size

---

## ***B.4* Hardware**

---

### ◆Display of the [Information of server state/constitution] of NEC ESMPRO Manager when an odd number of DIMMs are installed

When an odd number of DIMMs are installed, the indication of memory bank is displayed in gray (Not Installed) of [Information of server state/constitution] of NEC ESMPRO Manager. However, it is not the problem if the locations of actually installed DIMMs are correct. If any warning/error occurred on DIMM, the indication of memory bank becomes yellow (Warning) or red (Error) to allow you to detect a memory failure.

---

## **8.5 SNMP**

---

### **◆CPU Load Ratio of SNMP Service (snmp.exe)**

While monitoring the server from NEC ESMPRO Manager, the CPU load ratio of SNMP Service on the NEC ESMPRO Agent side may increase at every monitoring interval (default: 1 minute).

NEC ESMPRO Manager and NEC ESMPRO Agent exchange information through SNMP Service.

If the server status monitoring by NEC ESMPRO Manager is on (default: ON), NEC ESMPRO Manager regularly issues a request to NEC ESMPRO Agent to get the current status of the server. In response, NEC ESMPRO Agent checks the status of the server. As a result, the CPU load ratio of SNMP Service increases temporarily.

If you have trouble of terminating a movie player application, turn off the server status monitoring by NEC ESMPRO Manager or extend the monitoring interval.

### **◆Hang of SNMP Service**

SNMP Service has a module called "SNMP Extended Agent" This module may be registered when you install some software that uses SNMP Service.

If you start SNMP Service, SNMP Extended Agent is also loaded at the initialization. However, if the initialization is not completed within a specified period, SNMP Service will hang.

It may take time to complete the initialization due to temporary high load on the system. In this case, wait for the system load become low enough before restarting SNMP Service.

### **◆Community Authority**

Depending on your OS type or its version, settings for community, SNMP service's security function, are not made, or default settings of authority are different.

To enable the remote shutdown and threshold change functions via NEC ESMPRO Manager, make settings of community and set its authority to "READ CREATE" or "READ WRITE".

### **◆Change of SNMP Community**

If the security setting of the SNMP Service of a system, where the NEC ESMPRO Agent is installed, is changed from the default "public" to a community name, change the community settings of the NEC ESMPRO Agent, too.

1. Double-click the [NEC ESMPRO Agent] icon in [Control Panel].
2. Click Select a desired community name from the [SNMP Community] list box in [SNMP Setting] of the [General] sheet.  
The community names to receive SNMP packets from are listed in the [SNMP Community] list box.
3. Click [OK].

---

## **8.6 System**

---

### **◆CPU Information**

In [CPU Information] of [Information of server state/constitution] system tree, the external clock is listed as "Unknown".



---

## **8.7 System environment**

---

### **◆Threshold for Temperature / Power Voltage / Fan Monitoring**

The threshold for temperature/power voltage/fan cannot be displayed or changed. However, some models can only display the threshold of the [Information of server state/constitution] of NEC ESMPRO Manager.

NEC ESMPRO Agent performs monitoring with the optimal threshold set on each model.

### **◆Display for Temperature / Power Voltage / Fan Sensors**

On some models, temperature/power voltage/fan sensors do not have information on the status, current values, revolutions, thresholds, etc. Note that the following may be displayed when referring to the applicable sensor on NEC ESMPRO Manager.

- Display of the [Information of server state/constitution] of NEC ESMPRO Manager, the status is shown as "Unknown".
- Display of the [Information of server state/constitution] of NEC ESMPRO Manager, the current value and revolutions are not displayed, or they are shown as "Unknown".

Even if the above are displayed, there is no problem as the monitoring is being performed.

### **◆Case cover monitoring**

The alert according to the opening and shutting of the case cover is not alerted of by the model that supports the case cover monitoring in initialization either.

The alert of the opening and shutting of the case cover comes to be informed of by changing the setting with a set tool of the alert report function (Alert manager).

The state of the server state color and the case cover is reflected by [Information of server state/constitution] of NEC ESMPRO Manager regardless of the record setting.

### **◆Display of power supply**

Tedium is correctly displayed though information on the power source module mounted with NEC ESMPRO Manager is not displayed even if the power source module is mounted while starting when the device of the redundant power supply composition is started by non-redundant power supply composition.

Restart OS to reflect the mounted state of the power supply module.

### **◆Display of the [Information of server state/constitution] of NEC ESMPRO Manager when the redundant fan is removed/inserted**

If the redundant fan is removed/inserted in hot-swap mode, the latest configuration information may not be displayed of the [Information of server state/constitution] of NEC ESMPRO Manager.

The following event is logged when the redundant fan is removed/inserted. If the latest configuration information is not displayed, restart the SNMP service.

Source	:	ESMCommonService
Event ID	:	1602
Description	:	A new device is connected to the slot or the connector.

---

## **B.B Coexistence with another product**

---

### **◆CPU Load when Using Microsoft SQL Server 6.5 Simultaneously**

For use under the following conditions, the CPU load of the NEC ESMPRO Agent service may increase (+10% or more).

#### **- Conditions**

- Microsoft SQL Server 6.5 and NEC ESMPRO Agent are installed on the same machine and the services are running.
- The [Integrate Performance Monitor] option of the Microsoft SQL Server 6.5 is checked.

#### **- Verification procedure**

Using the Performance Monitor, compare the values when the [Integrate Performance Monitor] option of the Microsoft SQL Server 6.5 is checked and unchecked.

Object : Process, Counter : % Processor Time, Instance : ESMCMN



Ensure to restart the machine after checking/unchecking the option. If the machine is not restarted, the correct load factor cannot be acquired with the Performance Monitor.

#### **- Countermeasure**

If the CPU load factor acquired by the "verification procedure" above greatly differs when the option of the SQL Server is on and off, it is believed that the CPU load factor increases when the option is set to on.

The above phenomenon occurs because the amount of performance data collected from the OS increases when this SQL Server option is set to on; thereby, the service to collect the performance data from the OS requires time to analyze the performance data.

If you do not need to monitor the performance data of SQL Server, set the SQL Server option to off in order to prevent the CPU load from increasing due to the collection of unnecessary performance data.

### **◆File Sysytem monitoring cannot be inherited on the system using EXPRESSCLUSTER**

When using NEC ESMPRO Agent in the cluster environment configured by EXPRESSCLUSTER, there is a following limitation:

- If a failover occurs, the settings of the threshold for the empty space monitoring function and the enable/disable of monitoring of the operating sever are not inherited to the standby server. Make sure to reset the threshold and the enable/disable of monitoring on the standby server.

### **◆Using with Oracle Products**

When an Oracle product is installed, the startup of SNMP Service may be changed to "Manual". In such a case, restore it to "Automatic" and configure the appropriate settings according to the instructions of the Oracle product. For any concerns, contact "NEC Oracle Response Center".

## ◆Microsoft Failover Cluster (MSFC)\*

When MSFC is used, the following event may be registered and reported to NEC ESMPRO Manager.

Source : AlertManagerMainService  
Event ID : 802  
Description : The past event was detected during the System log monitoring.  
The possible causes are as follows:  
- The system time has been changed.  
- Shutdown was not performed properly.  
- The event log file is corrupted.

Although MSFC has a feature that all the events of clustered computers are visible, the events may not be stored to the event log in the order of date (such as when either of the computers was shut down or started).

NEC ESMPRO Agent checks whether the events are stored in the order of date. Therefore, when an event not in the order of date is found, it registers such an event assuming that "the past event is detected".

Even when the event is registered due to this feature of MSFC, the event log monitoring feature continues and it operates properly for those events in the order of date.

\* On Windows Server 2008, the name of MSFC was changed to Microsoft Cluster Service (MSCS).

---

## **8.9** Report

---

### ◆Detail information of alert

Detail information of some alert displayed on the alert viewer may be shown as "Unknown".

### ◆Deleted Reporting Method

From the NEC ESMPRO Agent Ver. 4.3, the following reporting methods will not be supported.

- Pager
- ALIVE

### ◆General client report

"General client report" cannot be used.

Though no error appears even if you enable this method, it just does not work.

---

## 8.10 OS dependence

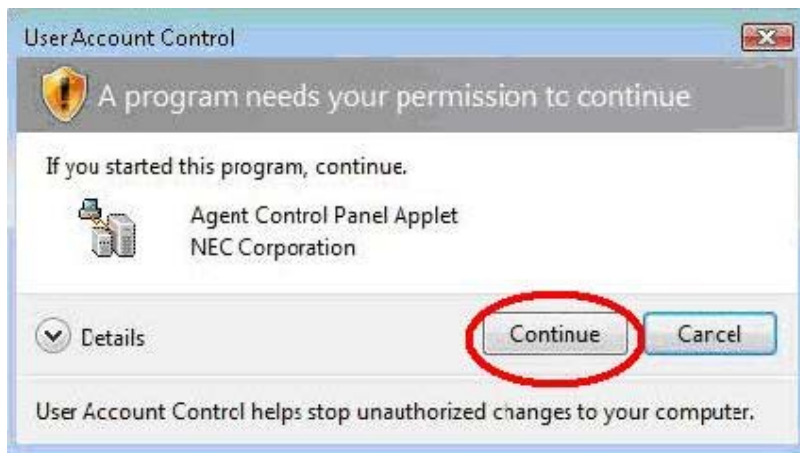
---

### ◆Notes on Server Core

- Help dialog box of Alert Manager setting tool does not appear.
- "Manager (TCP/IP Out-of-Band)" method cannot be used.
- "Max Speed" of the serial port information on NEC ESMPRO Manager may be indicated with "unknown".

### ◆User Account Control

On Windows Vista / Windows Server 2008 or later system that the User Account Control is turned on, if you start the NEC ESMPRO Agent Control Panel or collect.exe program, the [User Account Control] dialog box will appear. Click [Continue] button to start the program.



### ◆The number of mouse buttons

On Windows Vista / Windows Server 2008 or later system, the value of "Buttons" item of Mouse Information of the [Information of server state/constitution] of NEC ESMPRO Manager is "Unknown".

### ◆Monitoring CPU Load Factor

On Windows Vista / Windows Server 2008 or later, a memory leak may occur when you acquire the CPU load factor due to problems with the OS.

If you do not monitor the CPU load factor, remove the module to monitor the CPU load factor by following the procedure below.

1. From Control Panel, Double-click [Administrative Tools] - [Service].
2. Right-click [ESMCommonService] and click [Stop].
3. Change the file name "%SystemRoot%\system32\cpuperf.esr" as follows.  
"cpuperf.esr" -> "cpuperf.bak"  
\* For x64 Edition, change the following file name.  
"%SystemDrive%\Windows\SysWOW64\cpuperf.esr"
4. Right-click [ESMCommonService] and click [Start].

## ◆Notes on virtualization environment

- The connector shape of the serial port information may not display correctly on the NEC ESMPRO Manager.
- The size of the BIOS information may not display correctly on the NEC ESMPRO Manager.
- The type of the chassis information may not display correctly on the NEC ESMPRO Manager.
- The item of Cache of CPU information may not display correctly on the NEC ESMPRO Manager.

## ◆Notes on host OS of Virtualization environment

When NEC ESMPRO Agent detects dangerous trouble information continuous to operate, OS is shutdown in the setting of default.

The shutdown not anticipated from Guest OS was generated because the service console shutdown without shutting down Guest OS in the environment to operate Guest OS in the virtualization environment.

Invalidate the shutdown function by the report from NEC ESMPRO Agent, and shutdown from Guest OS by manual at the failure when the normal termination of Guest OS is valued.

[Setup steps of shutdown function by report]

1. **Logon as a user with administrative privilege.**
2. **Double-click [NEC ESMPRO Agent] in [Control Panel].**
3. **Click [NEC ESMPRO Agent]-[Report Setting...].**  
Displays Alert Manager.
4. **Click [Setting]-[Base Setting].**
5. **It is confirmed that "Shutdown Delay" item of [Other] is invalid (red).**  
Change to invalid (red) clicking the icon when it is valid (green).
6. **Click [OK] Setting Terminate.**

## ◆Display information Virtualization environment (Hyper-V)

If the OS of Agent computer is Windows 8 or Windows Server 2012 on virtualization environment (Hyper-V), when using the video driver "Microsoft Hyper-V video", the following items of information display of NEC ESMPRO Manager, will be displayed as "unknown".

- Refresh rate
- Vertical/horizontal resolution
- Pixel
- RAM size

---

## 8.11 Others

---

### ◆Pop-up message of esmcmn.exe is displayed when starting the OS

The following pop-up message may be displayed when you restart the system which NEC ESMPRO Agent is installed and removal drives such as DVD is mounted on, without closing Windows Explorer, after displaying the contents of media and removing the media by the software eject (by right-clicking the DVD drive on Windows Explorer and selecting [Eject]).

The message (the drive name) displayed varies depending on the OS.

If the pop-up message "There is no disk in the drive. insert a disk into drive A:." is displayed, click [Cancel] or [Continue] to close the dialog box. If you do not close the dialog box, you cannot start the Workstation service and related services, causing unstable operation of the OS. Also, if you restart the system, execute it after terminating the program such as Windows Explorer which displays a media.

Example:



### ◆PCI hot plug

Select the server for the watch with NEC ESMPRO Manager again and renew the [Information of server state/constitution] tree when you dynamically change the composition of a server concerned with PCI hot plug when server information is being referred by [Information of server state/constitution] of NEC ESMPRO Manager.

When the [Information of server state/constitution] tree is not renewed, it might be different from information on present HW because the configuration change of HW with PCI hot plug is not reflected.

Moreover, it can be confirmed that the composition of the device that installs NEC ESMPRO Agent was changed because the device of NEC ESMPRO Manager has registered in the trap destination of NEC ESMPRO Agent, and the trap concerning "State of Slot" is transmitted to the manager according to the timing of the configuration change on the NEC ESMPRO Manager.

### ◆Monitoring under Sleep Mode

When NEC ESMPRO Agent is in sleep mode (system standby or system hibernation), NEC ESMPRO Agent in sleep mode cannot be monitored from NEC ESMPRO Manager.

When server failure monitoring is performed from NEC ESMPRO Manager and the applicable NEC ESMPRO Agent is put into sleep mode, the "No response from the server." message is reported, the status of the server icon turns "Unknown", and NEC ESMPRO Manager fails to judge whether NEC ESMPRO Agent fails or is put into sleep mode. Keep this in mind if you operate the monitoring target system with the setting that allows the system to enter sleep mode.

### ◆When Performing Duplex System Management

To perform duplex system management by using EXPRESSCLUSTER, install NEC ESMPRO Agent on a local disk on both the operating and standby servers. The installation procedure for NEC ESMPRO Agent is same as a normal installation, except that it should be installed on two servers.

### ◆Restart after HW trouble occurs

When abnormality of HW is detected, OS is shutdown.

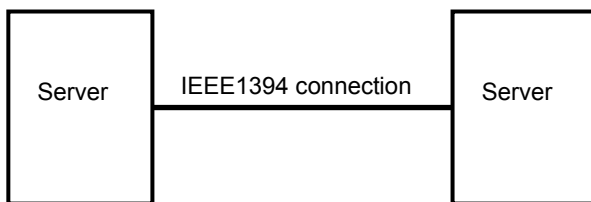
When the morrow is started, it is likely to shutdown when OS is restart without action/recovering trouble after it shutdown. Restart OS after action/recovering trouble.

### ◆Shutdown monitoring

When performing shutdown monitoring, all shutdown processes are to be monitored. If there is an application that performs shutdown without rebooting OS or turning off the power, set the timeout value longer or disable the monitoring function.

### ◆Monitoring LAN via IEEE1394 interface

If you connect an IEEE1394 network adapter and an IEEE1394 network adapter on another equipment, NEC ESMPRO Agent could not monitor LAN activity.



### ◆Monitoring by NEC ESMPRO Manager

If the version of NEC ESMPRO Manager is older than that of the target NEC ESMPRO Agent, its operation is not guaranteed. Some items cannot be monitored. Use the same or newer version of NEC ESMPRO Manager than that of NEC ESMPRO Agent for monitoring.

### ◆Display of the [Information of server state/constitution] of NEC ESMPRO Manager

It might be displayed, the display of some items is "Unknown" by the model and the environment in the display of the [information of server stare/constitution] of NEC ESMPRO Manager.

### ◆Indication of a server icon in the OS shut down

When shut down does OS, a server icon of NEC ESMPRO Manager becomes yellow temporarily(Warning), but it's no problem in practical use of a system.

### ◆Dump setting monitoring system

From the NEC ESMPRO Agent Ver. 4.6, the dump setting monitoring system will not be supported.

---

---

# Appendix

---

---

## ◆Port number list

NEC ESMPRO Agent uses the following port numbers.

To use NEC ESMPRO Agent with the Windows Firewall enabled, open the required ports.

### [NEC ESMPRO Manager <-> NEC ESMPRO Agent]

Function	NEC ESMPRO Manager	Direction	NEC ESMPRO Agent	Remarks
Auto Registration	Auto-assignment	->	161/udp	snmp
Server Monitoring (SNMP)		<-		
SNMP report to Manager	162/udp	<-	Auto-assignment	snmp-trap
TCP/IP report to Manager	31134/tcp	<- ->	Auto-assignment	

\* In case of two-way protocol, upper arrow shows that connection starts, and lower arrow shows that connection turns.

\* The port number used by TCP/IP report to Manager can be changed in set screen of report.

\* In case of port No. "Auto-assignment", unused port is used to start connection.



## ◆Services list

NEC ESMPRO Agent uses the following services.

Services	Process name	Start-up	Function	Remarks
Alert Manager Main Service	AMVMain.exe	Automatic	Manage Various trouble reports.	
Alert Manager Socket(S) Service	amvscks.exe	Manual	Report to Manager by using TCP/IP.	When either of " Manager(TCP/IP In-Band) and Manager(TCP/IP Out-of-Band)" is set to valid (green) at Base Setting Window, the service is started. When both settings are set to invalid (red), it is stopped.
ESMDiskArray	esmda.exe	Automatic	Monitors state and configuration of "Promise Technology, Inc. RAID System" and "LSI Corporation RAID System".	
ESM Storage Service	esmstrg.exe	Automatic	Monitors Storage Device state and configuration.	
ESMFSService	esmfs.exe	Automatic	Monitors File System configuration and free space.	
ESMLANService	esmlan.exe	Disabled	Monitors load of network line and trouble.	
ESMCommonService	esmcmn.exe	Automatic	Monitors temperature, voltage, fan, power supply, and dump setting.	
ESM System Management Service	esmsmsrv.exe	Automatic	Monitors temperature, voltage, fan, power supply, and door, etc.	Only the IPMI corresponding model.
ESRAS Utility Service	nvrmsrv.exe	Manual	Information displayed by the ESRAS utility is taken.	

### ◆ The order of start / stop of services

To start or stop services, perform the following procedure.

On some model of server, some service may not exist.

[order]	[Stopping services]	[Starting services]
1.	ESM Storage Service	ESMCommonService
2.	ESMDiskArray	ESM System Management Service
3.	ESMFSService	SNMP Service
4.	ESMLANService	Alert Manager Main Service
5.	ESMCommonService	Alert Manager Socket(S) Service
6.	ESM System Management Service	ESM Storage Service
7.	ESRAS Utility Service	ESMDiskArray
8.	Alert Manager Main Service	ESMFSService
9.	Alert Manager Socket(S) Service	ESMLANService
10.	SNMP Service	ESRAS Utility Service