

Express5800

NEC

NEC ESMPRO Manager Ver.5 Setup Guide

**Chapter 1 Setup for Managed Component
integrated EXPRESSSCOPE Engine 3**

**Chapter 2 Setup for Managed Component
integrated BMC excluding EXPRESSSCOPE
Engine 3 (for LAN connection)**

**Chapter 3 Setup for the Managed Component
integrated BMC excluding EXPRESSSCOPE
Engine 3 (for modem / direct connection)**

Chapter 4 EM Card and Chassis Management

Chapter 5 Setup for the NEC Storage M series

**Chapter 6 Setup for the Managed Component
based on vPro**

Chapter 7 Setup for the VMware ESXi5 server

Appendix A

Appendix B

Appendix C

Contents

Front Cover	1
Contents.....	2
Terminology	4
Trademarks	5
About This Document	6
About the advanced software and the user support	7
Chapter1 Setup for Managed Component in which EXPRESSSCOPE Engine 3 is integrated	8
1.1 Setup Flow.....	8
1.2 Configure BMC on Managed Component.....	9
1.2.1 Configuration with EXPRESSSCOPE Engine 3 WebConsole	10
1.2.2 Configuration with Online BMC Configuration.....	14
1.2.3 Configuration with Off-line BMC Configuration.....	22
1.3 Register a managed component on NEC ESM PRO Manager	26
1.3.1 Add Group to which the managed component will belong.....	26
1.3.2 Register the Managed Component.....	28
Chapter2 Setup for Managed Component in which a BMC excluding EXPRESSSCOPE Engine 3 is integrated (for LAN connection).....	36
2.1 Setup Flow (for LAN connection).....	36
2.2 Configure BMC on Managed Component (for LAN connection).....	37
2.2.1 Configuration with NEC ESM PRO Agent Extension ver1.xx (for LAN connection).....	38
2.2.2 Configuration with NEC EXPRESSBUILDER DOS based with remote console feature (for LAN connection).....	49
2.2.3 Configuration with NEC EXPRESSBUILDER System Management (for LAN connection).....	54
2.3 Register a managed component on NEC ESM PRO Manager (for LAN connection)	60
2.3.1 Add Group to which the managed component will belong.....	60
2.3.2 Register the Managed Component (for LAN connection).....	62
Chapter3 Setup for the Managed Component in which a BMC excluding EXPRESSSCOPE Engine 3 is integrated (for modem / direct connection)	71
3.1 Setup Flow (for modem/direct connection).....	71
3.2 Configure BMC on Managed Component (for modem/direct connection).....	72
3.2.1 Configuration with NEC ESM PRO Agent Extension (for modem/direct connection).....	73
3.2.2 Configuration with NEC EXPRESSBUILDER DOS based with remote console feature (for modem/direct connection)	74
3.3 Register the managed component on NEC ESM PRO Manager (for modem/direct connection)	76
3.3.1 Add Group to which the managed component will belong.....	76
3.3.2 Register the Managed Component (for modem/direct connection).....	76
Chapter4 EM Card and Chassis Management.....	78
4.1 Overview	78
4.2 System Requirements	78
4.3 Setup for EM Card.....	79
4.3.1 Setup Flow.....	79
4.3.2 Setup EM Card for communication with NEC ESM PRO Manager Setup the EM Card as follows. See Users Guide that attached to EM Card for detail.	79
4.3.3 Register EM Card on NEC ESM PRO Manager	79
4.4 Operation of EM card.....	81
4.5 CPU Blade Auto Registration.....	81
Chapter5 Setup for the NEC Storage M Series	82
5.1 Register NEC Storage on NEC ESM PRO Manager.....	82
Chapter6 Setup for the Managed Component based on vPro.....	84
6.1 Setup Flow.....	84
6.2 Configure iAMT on the Managed Component.....	84

6.3	Register the managed component on NEC ESMPRO Manager	84
6.3.1	Add Group to which the managed component will belong.....	84
6.3.2	Register the Managed Component.....	85
Chapter7	Setup for the VMware ESXi5 server	88
7.1	Setup Flow.....	88
7.2	Configure BMC on the Managed Component.....	88
7.3	Register the managed component on NEC ESMPRO Manager.....	88
7.3.1	Set the Environment	88
7.3.2	Add Group which the managed component will belong.....	88
7.3.3	Register the Managed Component.....	88
Appendix A.	How to setup for the managed component that does not has local console.....	92
Appendix B.	How to setup for using NEC ESMPRO Agent Extension or NEC DianaScope Agent on the managed component that is set LAN teaming.....	94
Appendix C.	Managed Components Summary	97

Terminology

Term	Description
BMC	Baseboard Management Controller An Embedded controller which is able to monitor the system status or error regardless of DC off/on.
SOL	Serial Over LAN A function which BMC converts the serialized data to UDP Packet and sends to LAN.
PXE	Preboot Execution Environment DHCP based remote boot technology to boot or install operating system of client computer from remote server.
vPro	Intel platform brand for business users (Intel® vPro™ Technology).
iAMT	Intel® Active Management Technology Remote control technology and one of main functions of vPro.

Trademarks

EXPRESSBUILDER and NEC ESMPRO are registered trademarks of NEC Corporation.

Microsoft, Windows, Windows Vista, Windows Server are registered trademarks or trademarks of Microsoft Corporation in the United States and other countries.

Intel and Intel vPro are registered trademarks or trademarks of Intel Corporation in the United State and other countries.

All other product, brand, or trade names used in this publication are registered trademarks or trademarks of their respective trademark owners.

All names used in sample applications are fictitious. They are unrelated to existing product, organization, or individual names.

Windows Server 2012 R2 stands for Windows Server® 2012 R2 Standard, and Windows Server® 2012 R2 Datacenter.

Windows Server 2012 stands for Windows Server® 2012 Standard, and Windows Server® 2012 Datacenter.

Windows Server 2008 R2 stands for Windows Server® 2008 R2 Standard, Windows Server® 2008 R2 Enterprise, and Windows Server® 2008 R2 Datacenter.

Windows Server 2008 stands for Windows Server® 2008 Standard operating system, Windows Server® 2008 Enterprise operating system, Windows Server® 2008 Datacenter operating system, and Windows Server® 2008 Foundation.

Windows 8.1 stands for Windows® 8.1 Pro 64-bit Edition, Windows® 8.1 Pro 32-bit Edition, Windows® 8.1 Enterprise 64-bit Edition, and Windows® 8.1 Enterprise 32-bit Edition.

Windows 8 stands for Windows® 8 Pro, and Windows® 8 Enterprise.

Windows 7 stands for Windows® 7 Professional operating system, Windows® 7 Ultimate operating system.

Windows Vista stands for Windows Vista® Business operating system, Windows Vista® Enterprise operating system, and Windows Vista® Ultimate operating system.

Windows XP stands for Windows® XP Professional operating system, and Windows® XP Professional x64 Edition operating system.

vPro stands for Intel® vPro™.

VMware, VMware ESXi are registered trademarks or trademarks of VMware, Inc. in the United States and other countries.

■ Notes

- (1) No part of this document may be reproduced in any form without the prior written permission of NEC Corporation.
- (2) The contents of this document may be revised without prior notice.
- (3) The contents of this document shall not be copied or altered without the prior written permission of NEC Corporation.
- (4) All efforts have been made to ensure the accuracy of all information in this document. If you notice any part unclear, incorrect, or omitted in the document, contact your authorized NEC sales representative.
- (5) NEC assumes no liability for damages arising from the use of this product, nor any liability for incidental or consequential damages arising from the use of this document regardless of (4).

About This Document

This document introduces remote management using the server management utility "NEC ESMPRO Manager" and explains the complete procedures from installation to managed component's setup.

Before attempting to operate the component management utility NEC ESMPRO Manager, read this document so as to gain an adequate understanding of the contents.

■ Notes

This document is intended for persons who are familiar with the operating system's functions and operations and the network's functions and setup. For operations and inquiries about the operating system, see its online help information.

This document covers universal information about generally managed components. The notes and restrictions on use of each product as a managed component are explained in the user's guide provided with the managed component and "Appendix C. Managed Components Summary".

If the NEC EXPRESSBUILDER(SE) CD-ROM or Maintenance Management Tool CD-ROM is attached to the managed component, read the word in place of "NEC EXPRESSBUILDER" in this document.

Names used with screen images in this document are fictitious. They are unrelated to existing product names, names of organizations, or individual names. The setting values on the screen images are shown as examples, so setting values such as IP addresses on screen images are not guaranteed for operation.

In this document, "¥" expresses back slash.

■ About Symbols in This Document

The following explains three symbols that are used in this document:

- IMPORTANT:** Points or particular notes you must follow when handling software of components.
- CHECK:** Points or notes you need to check when handling software or components.
- TIPS:** Useful information.

■ Other Documents for NEC ESMPRO Manager

For other information about the NEC ESMPRO Manager, see the documents below.

- **Which components can NEC ESMPRO Manager control?**
See the "Appendix C. Managed Components Summary".
- **How to operate after setup.**
See the NEC ESMPRO Manager online help information.
- **How to operate the command line Interface.**
See the "NEC ESMPRO Manager Command Line Interface".

About the advanced software and the user support

See the following URL for NEC ESMPRO Manager information. You can download the latest version of NEC ESMPRO Manager from the URL.

<http://www.58support.nec.co.jp/global/download/index.html>

Chapter1 Setup for Managed Component in which EXPRESSSCOPE Engine 3 is integrated

This chapter explains the setup procedure for the NEC ESMPRO Manager to manage the BMC and NEC ESMPRO Agent Extension ver.2.xx on a managed component remotely via LAN connection.

1.1 Setup Flow

Setup by the following setup procedure:

- (1) Connect the management PC on which NEC ESMPRO Manager is installed and the managed component on the same network.
- (2) Configure BMC on the managed component to enable ESMPRO Management.
- (3) Register the managed component on NEC ESMPRO Manager.

1.2 Configure BMC on Managed Component

Configure BMC of the managed component at first.

TIPS:

- This section explains about the minimum setting that is necessary to connect NEC ESMPRO Manager with the managed component. For details of BMC configuration, see document of each tool.
-

There are three methods for configuring the BMC on a managed component for LAN connection.

■ **Configuration with NEC EXPRESSSCOPE Engine 3 WebConsole**

You can access EXPRESSSCOPE Engine 3 from Web a browser, and set the BMC Configuration information.

CHECK:

- You can use EXPRESSSCOPE Engine 3 only when the HTTP/HTTPS is set to enable.
 - You cannot configure BMCs on ft server with NEC EXPRESSSCOPE Engine 3 Web Console. Please choose other method.
-

■ **Configuration with online BMC Configuration.**

Online BMC Configuration tool installed on Windows/Linux OS sets BMC Configuration.

■ **Configuration with off-line BMC Configuration.**

Off-line BMC Configuration started from POST screen by F4 key sets BMC Configuration.

1.2.1 Configuration with EXPRESSSCOPE Engine 3 WebConsole

Explain the operation of Web Console of EXPRESSSCOPE Engine 3.

.....
CHECK:

- You cannot configure BMCs on fit server with NEC EXPRESSSCOPE Engine 3 Web Console. Please choose other method.
-

(1) After starting a web browser on the management PC, input following URL.

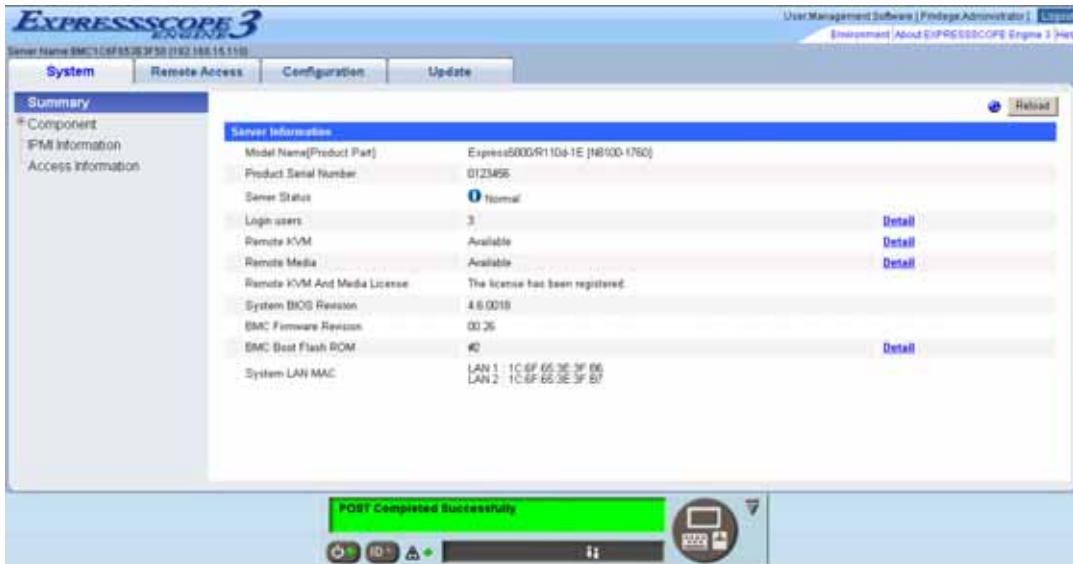
In the case that the IP address of BMC is 192.168.1.1 and the setting of HTTPS is enable.

`https://192.168.1.1/`

(2) "Main Menu" screen will be displayed.

Select "Configuration" tab.

The following screen shows example.



- (3) "Configuration" screen will be displayed.
Select "Miscellaneous".

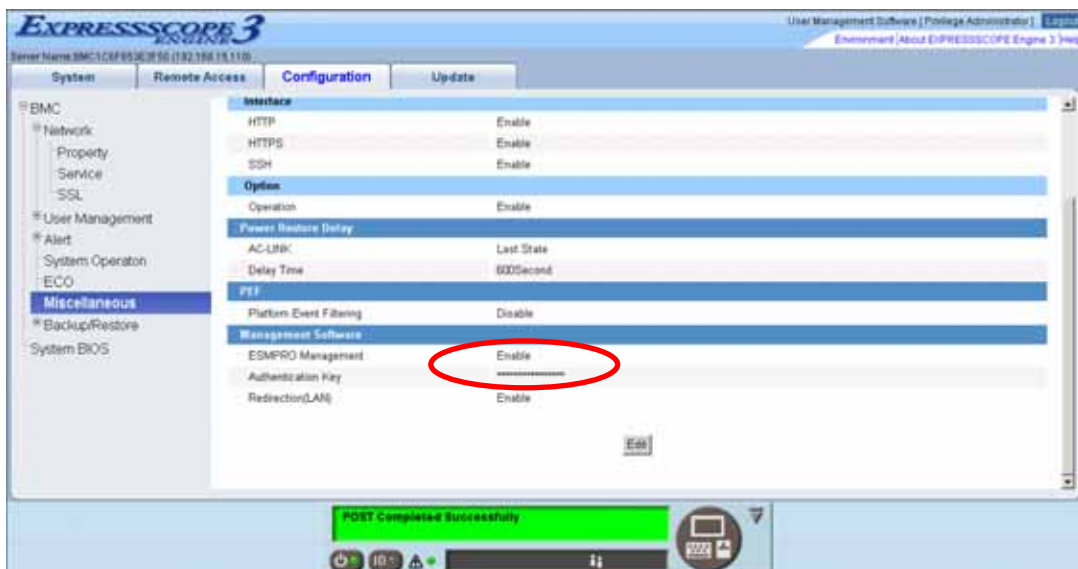


- (4) "Miscellaneous" screen will be displayed.

Be sure to set the following items. The other items can be used with the default values.

- "ESMPRO Management"
Click "Enable".
- "Authentication Key"
Enter the authentication key.

The following screen shows example.

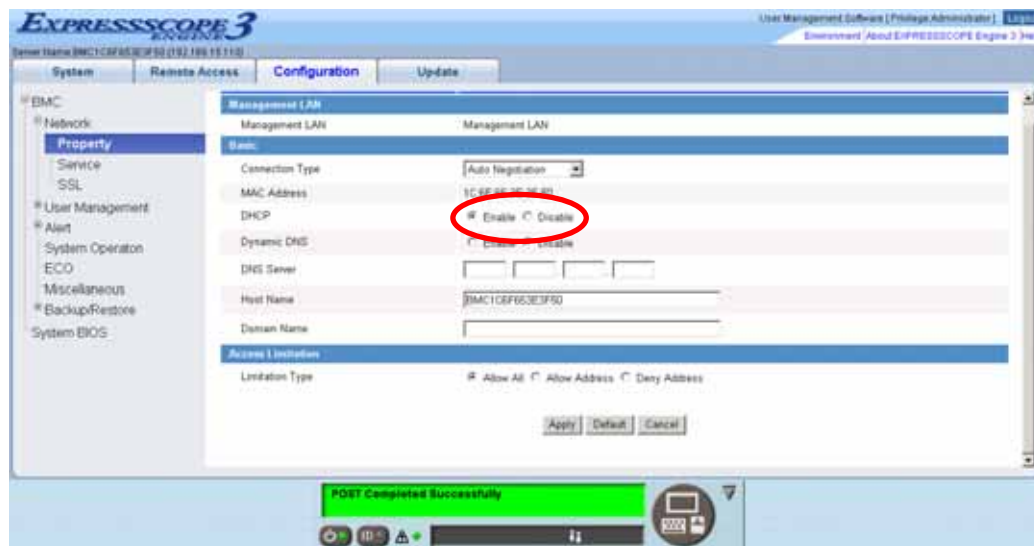


CHECK:

- If a managed component supports SOL and "Redirection" is selected to "Enable", you must change the following items for the remote console via the LAN.
 "Configuration" page – "System BIOS" page – "Flow Control": Hardware RTS/CTS

- (5) Select "Apply".
 The configuration information is set in the BMC.
- (6) Select "Property" page in "Network" screen.
 Set the following items. The other items can be used with the default values.
 - "DHCP"
 Determine whether to dynamically obtain an IP address from a DHCP server.
 If the item is set Enable and applied, BMC set the value obtained from DHCP server on "IP Address", "Subnet Mask" and "Default Gateway".
 - "IP Address"
 Enter the BMC IP address.
 - "Subnet Mask"
 Enter the subnet mask for the IP address.
 - "Default Gateway"
 Enter the default gateway if the managed component connects to management PC via any gateway

The following screen shows example.



- (7) If you set "Default Gateway", confirm that the gateway is connected to network.
- (8) Select "Apply".
 The configuration information is set in the BMC.

CHECK:

- Please set the following items for NEC ESMPRO Manager to receive alerts from the BMC.
 - Miscellaneous
 - Platform Event Filtering : Enable
 - Alert
 - Alert – SNMP Alert :
 - Alert : Enable
 - Computer Name : Any
 - Alert Receiver 1 IP Address:
IP address of the management PC on which NEC ESMPRO Manager is installed.
* Please set the checkbox to enable.
-

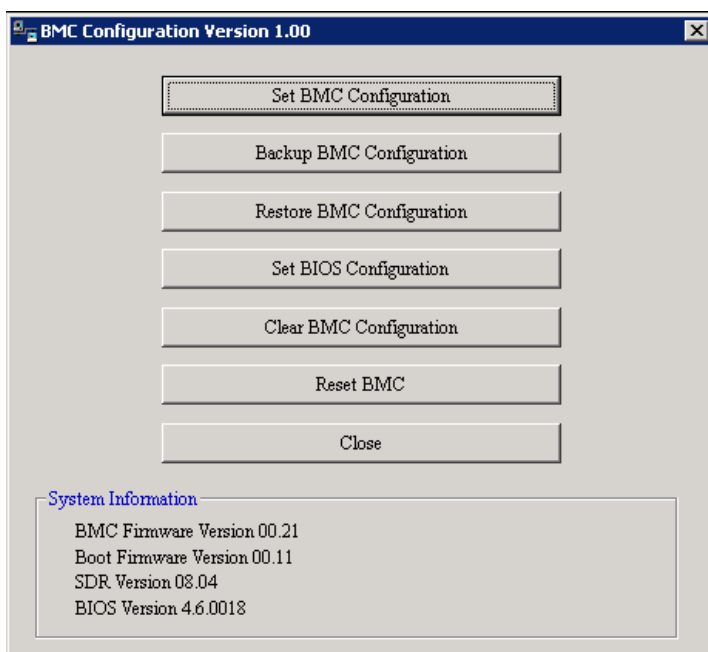
1.2.2 Configuration with Online BMC Configuration

1.2.2.1 Configuration with BMC Configuration for Windows

Explain the operation of BMC Configuration for Windows.

- (1) After booting Windows on the managed component, start BMC Configuration from start menu on Windows.
- (2) The main dialog box is displayed.
Click "Set BMC Configuration".

The following screen shows example.



(3) "BMC Configuration" dialog box is displayed. Click "Miscellaneous" tab page.

Be sure to set the following items. The other items can be used with the default values.

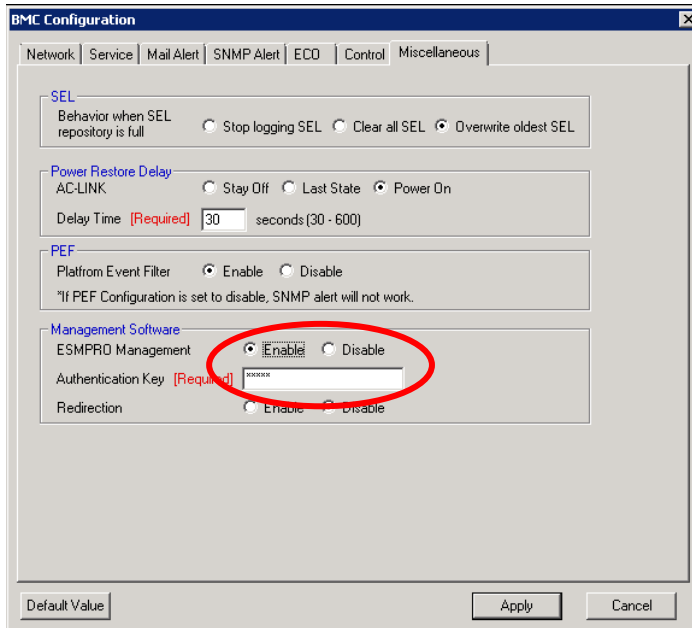
-- "ESMPRO Management"

Click "Enable".

-- "Authentication Key"

Enter the authentication key.

The following screen shows example.



.....
CHECK:

- If a managed component supports SOL and "Redirection" is selected to "Enable", you must change the following items for the remote console via the LAN.
Main dialog box – "Set BIOS Configuration" page – "Flow Control": Hardware RTS/CTS
-

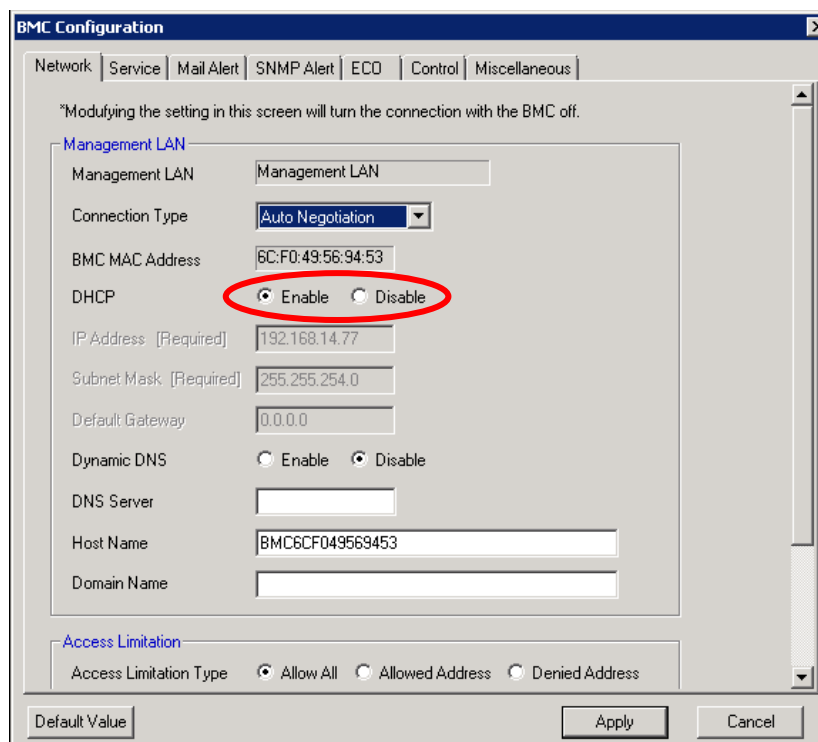
- (4) Select "Network" tab page.
Set the following items. The other items can be used with the default values.

CHECK:

- If you configure a fault tolerant server, there are the tab "Network 0" (for CPU/IO module 0) and the tab "Network 1" (for CPU/IO module 1). Please configure both CPU/IO modules.

- "DHCP"
Determine whether to dynamically obtain an IP address from a DHCP server.
If the item is set Enable and applied, BMC set the value obtained from DHCP server on "IP Address", "Subnet Mask" and "Default Gateway".
- "IP Address"
Enter the BMC IP address.
- "Subnet Mask"
Enter the subnet mask for the IP address.
- "Default Gateway"
Enter the default gateway if the managed component connects to management PC via any gateway.

The following screen shows example.



- (5) If you set "Default Gateway", confirm that the gateway is connected to network.
- (6) Click "Apply".
The configuration information is set in the BMC.

CHECK:

- Please set the following items for NEC ESMPRO Manager to receive alerts from the BMC.
 - Miscellaneous
 - Platform Event Filter : Enable
 - SNMP Alert
 - Alert : Enable
 - Computer Name : Any
 - Alert Receiver Primary IP Address :
IP address of the management PC on which NEC ESMPRO Manager is installed.
* Please set the checkbox to enable.
-

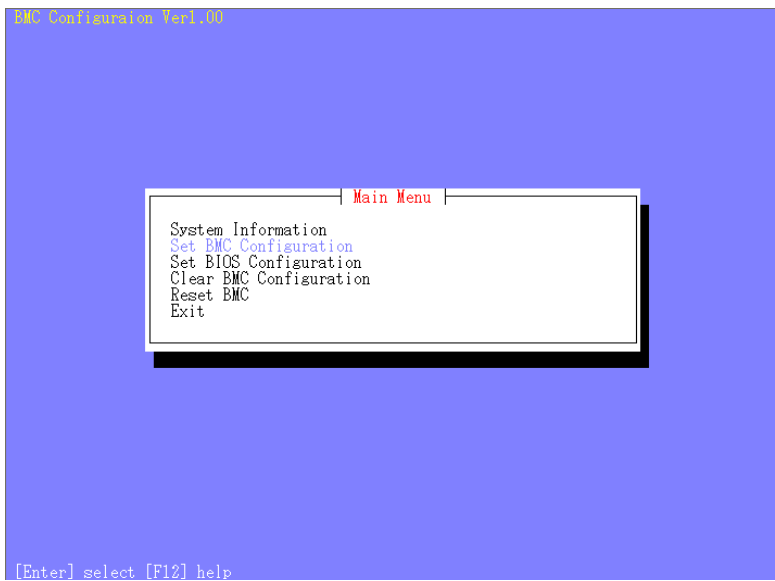
1.2.2.2 Configuration with BMC Configuration for Linux

Explains the operation of BMC Configuration for Linux.

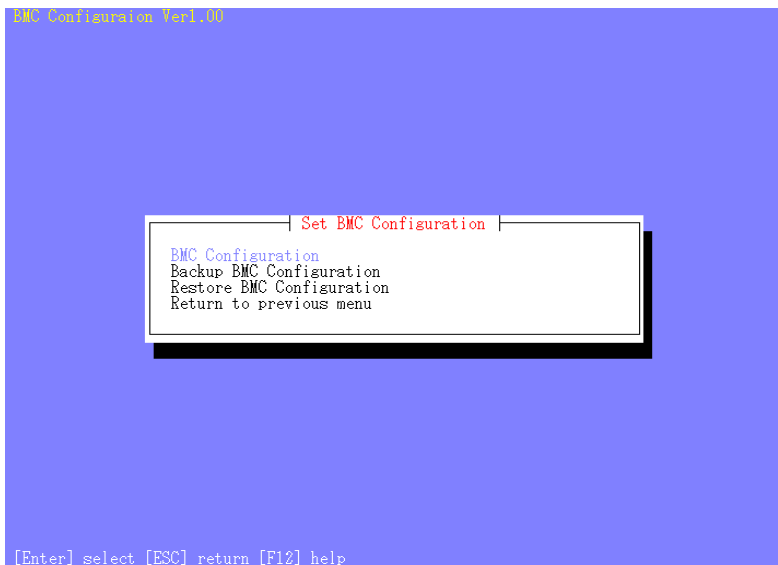
- (1) After booting Linux on the managed component, start the BMC configuration function of BMC Configuration by the following command.

```
/opt/nec/BMC_Configuration/bmcconf
```

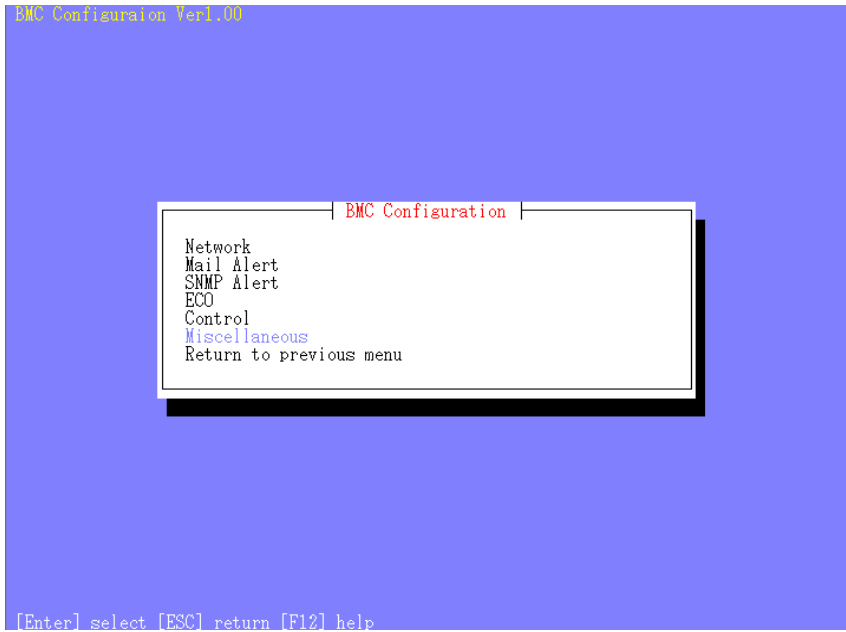
- (2) "Main Menu" screen is displayed.
Select "Set System Management Parameters".
The following screen shows example.



- (3) "Set BMC Configuration" screen is displayed.
Select "BMC Configuration".



- (4) "BMC Configuration" screen is displayed.
Select "Miscellaneous".



- (5) "Miscellaneous" screen is displayed.
Be sure to set the following items. The other items can be used with the default values.

- "ESMPRO Management"
Click "Enable".
- "Authentication Key"
Enter the authentication key.

The following screen shows example.



CHECK:

- If a managed component supports SOL and "Redirection" is selected to "Enable", you must change the following items for the remote console via the LAN.
 Main dialog box – "Set BIOS Configuration" page – "Console Redirection Configuration" page – "Flow Control": Hardware RTS/CTS

(6) Select "Apply".

The configuration information is set in the BMC.

(7) Select "Network" page – "Property" page from "BMC Configuration" screen.

Set the following items. The other items can be used with the default values.

-- "DHCP"

Determine whether to dynamically obtain an IP address from a DHCP server.

If the item is set Enable and applied, BMC set the value obtained from DHCP server on "IP Address", "Subnet Mask" and "Default Gateway".

-- "IP Address"

Enter the BMC IP address.

-- "Subnet Mask"

Enter the subnet mask for the IP address.

-- "Default Gateway"

Enter the default gateway if the managed component connects to management PC via any gateway.

The following screen shows example.



(8) If you set "Default Gateway", confirm that the gateway is connected to network.

(9) Select "Apply".

The configuration information is set in the BMC.

CHECK:

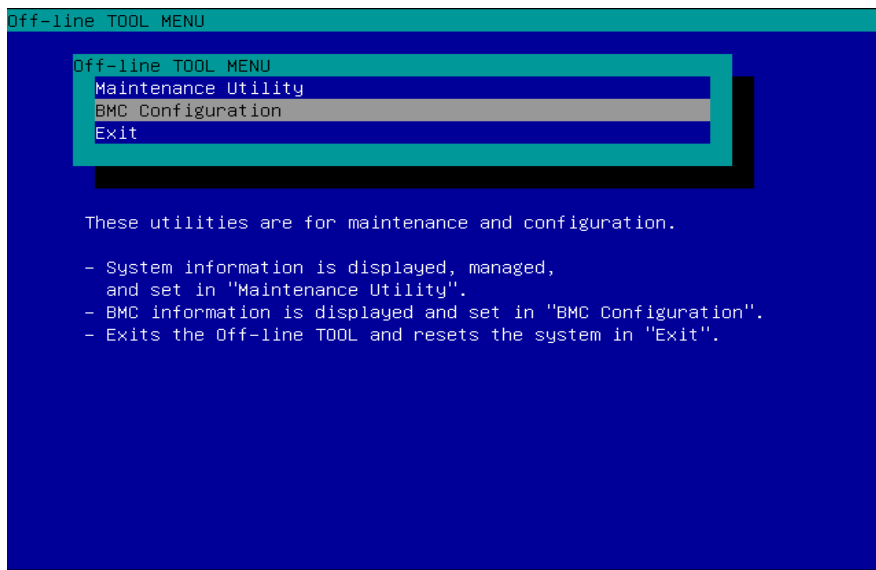
- Please set the following items for NEC ESMPRO Manager to receive alerts from the BMC.
 - Miscellaneous
 - Platform Event Filter : Enable
 - SNMP Alert:
 - Alert : Enable
 - Computer Name : Any
 - Primary Alert Receiver : Enable
 - IP Address :
 - IP address of the management PC on which NEC ESMPRO Manager is installed.
-

1.2.3 Configuration with Off-line BMC Configuration

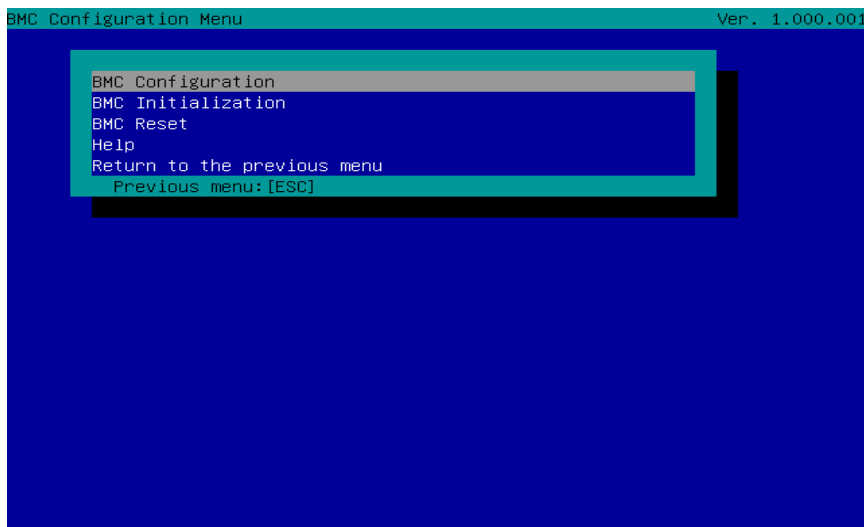
- (1) The following message is displayed on the bottom of POST screen.

```
Press<F2> SETUP, <F3> Internal flash memory, <F4> ROM Utility, <F12> Network
```

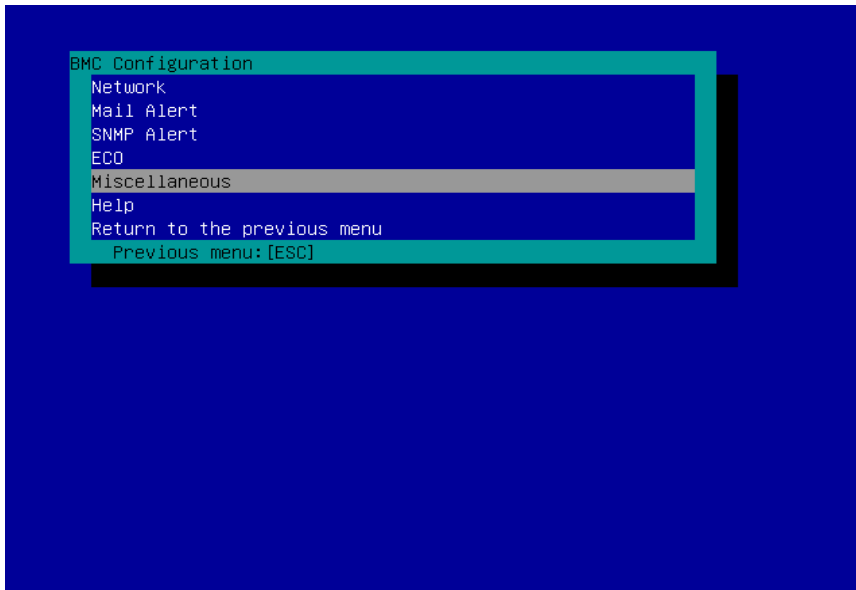
- (2) Press F4 key on this screen. If F4 key is entered, Keyboard type selection screen is displayed after POST screen. Select keyboard type.
- (3) "Main Menu" screen is displayed.
Select "BMC Configuration".
The following screen shows example.



- (4) "BMC Configuration Menu" screen is displayed.
Select "BMC Configuration".



- (5) "BMC Configuration" screen is displayed.
Select "Miscellaneous".

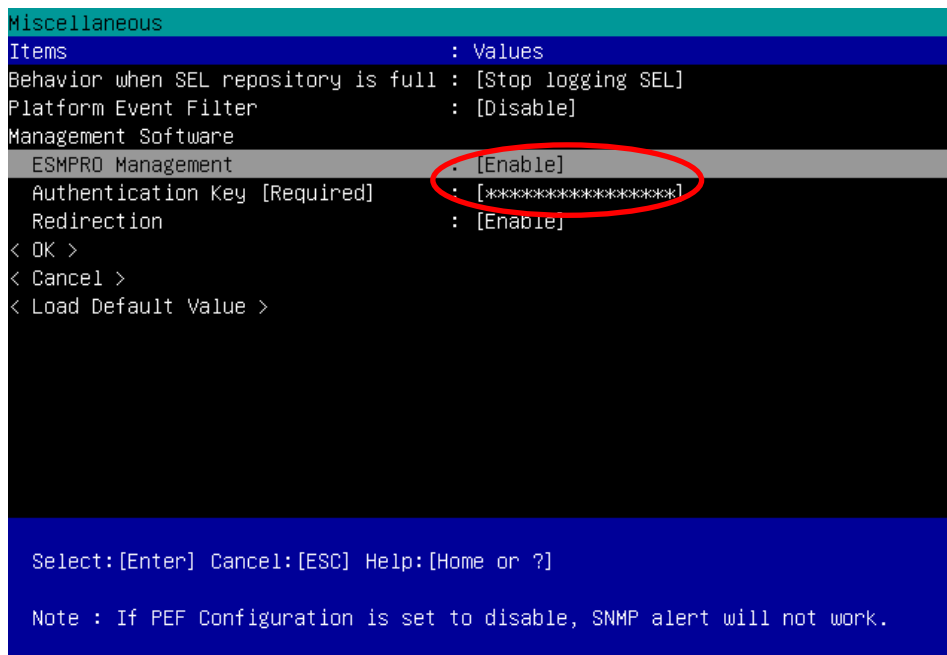


- (6) "Miscellaneous" screen is displayed.

Be sure to set the following items. The other items can be used with the default values.

- "ESMPRO Management"
Click "Enable".
- "Authentication Key"
Enter the authentication key.

The following screen shows example.



CHECK:

- If a managed component supports SOL and "Redirection" is selected to "Enable", you must change the following items necessary for the remote console via the LAN.
 Input <F2> key on the POST screen of the managed component.
 "SETUP" page – "Advanced" page – "Serial Port Configuration" page – "Flow Control":
 Hardware RTS/CTS
-

(7) Select "OK".
 The configuration information is set in the BMC.

(8) Select "Network" page – "Property" page from "BMC Configuration" screen.
 Set the following items. The other items can be used with the default values.

CHECK:

- If you configure a fault tolerant server, there are the menu "Network: CPU/IO module 0" and the menu "Network 1: CPU/IO module 1". Please configure both CPU/IO modules.
-

-- "DHCP"

Determine whether to dynamically obtain an IP address from a DHCP server.
 If the item is set Enable and applied, BMC set the value obtained from DHCP server on "IP Address", "Subnet Mask" and "Default Gateway".

-- "IP Address"

Enter the BMC IP address.

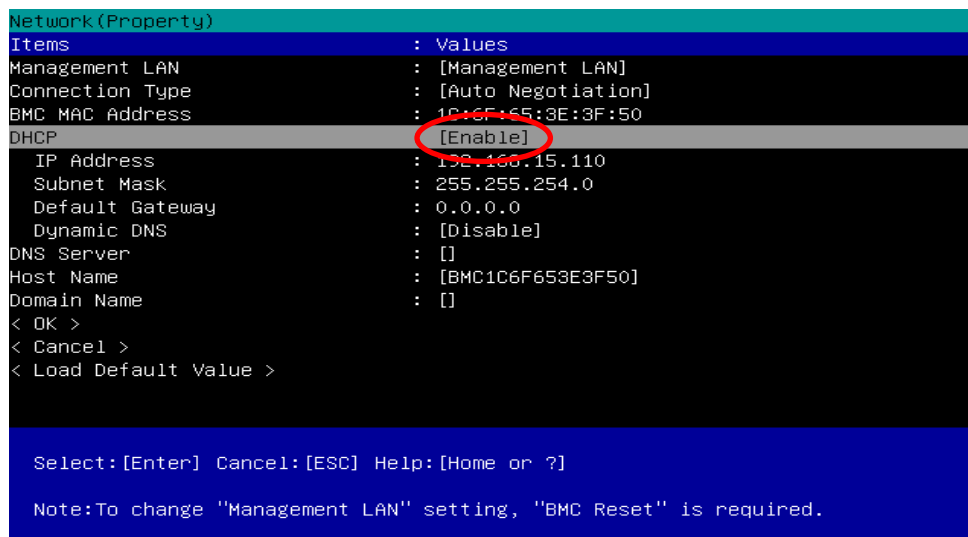
-- "Subnet Mask"

Enter the subnet mask for the IP address.

-- "Default Gateway"

Enter the default gateway if the managed component connects to management PC via any gateway.

The following screen shows example.



(9) If you set "Default Gateway", confirm that the gateway is connected to network.

(10) Select "OK".

The configuration information is set in the BMC.

CHECK:

- Please set the following items for NEC ESMPRO Manager to receive alerts from the BMC.
 - Miscellaneous
 - Platform Event Filter : Enable
 - SNMP Alert:
 - SNMP Alert : Enable
 - Computer Name : Any
 - Alert Receiver 1: Enable
 - IP Address 1:
 - IP address of the management PC on which NEC ESMPRO Manager is installed.
-

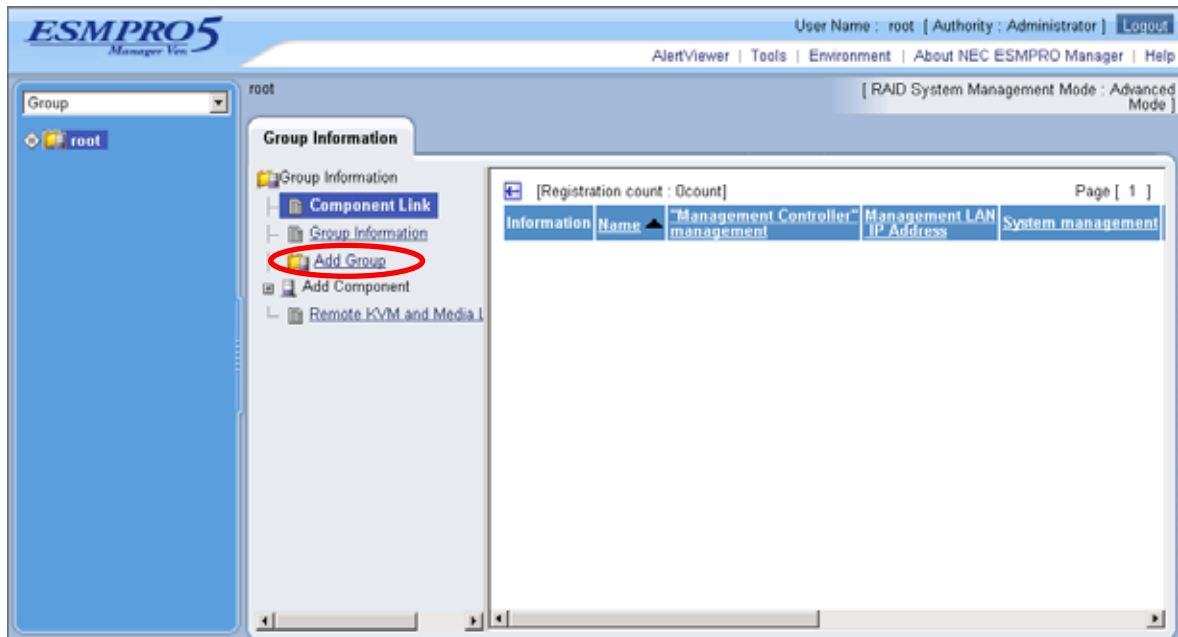
1.3 Register a managed component on NEC ESMPRO Manager

To register the managed component on the NEC ESMPRO Manager, login to the NEC ESMPRO Manager and perform in the following order:

- (1) Add the group to which the managed component will belong.
- (2) Register a managed component.

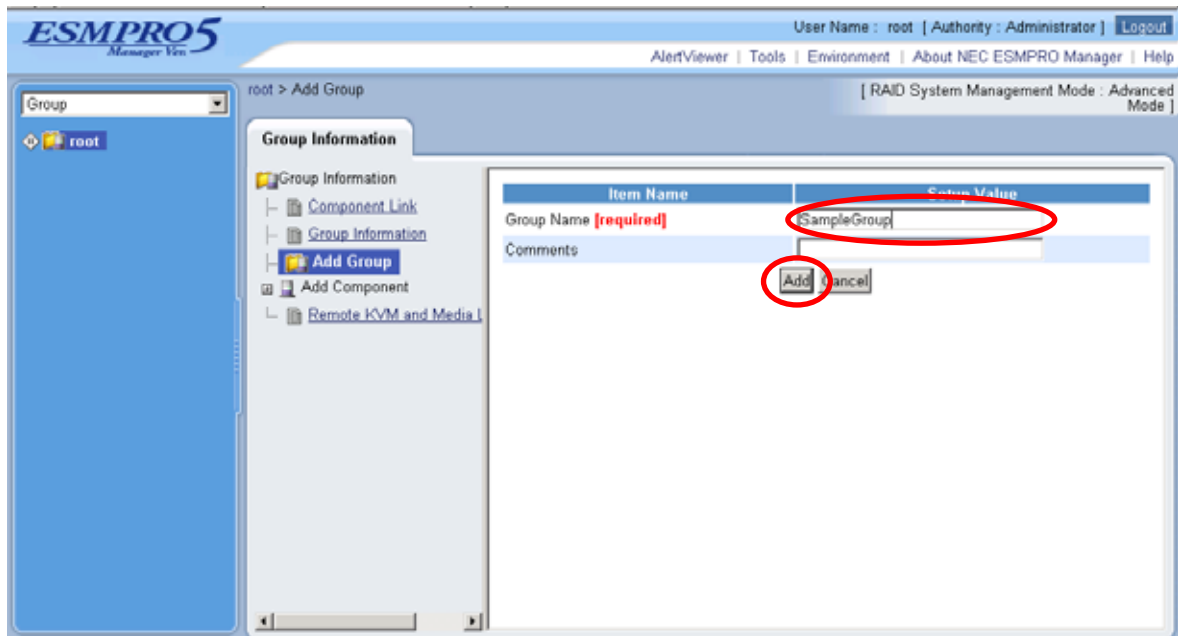
1.3.1 Add Group to which the managed component will belong

- (1) If you want to register the managed component in the specific group, click "Add Group" on the "Group Information" tab.

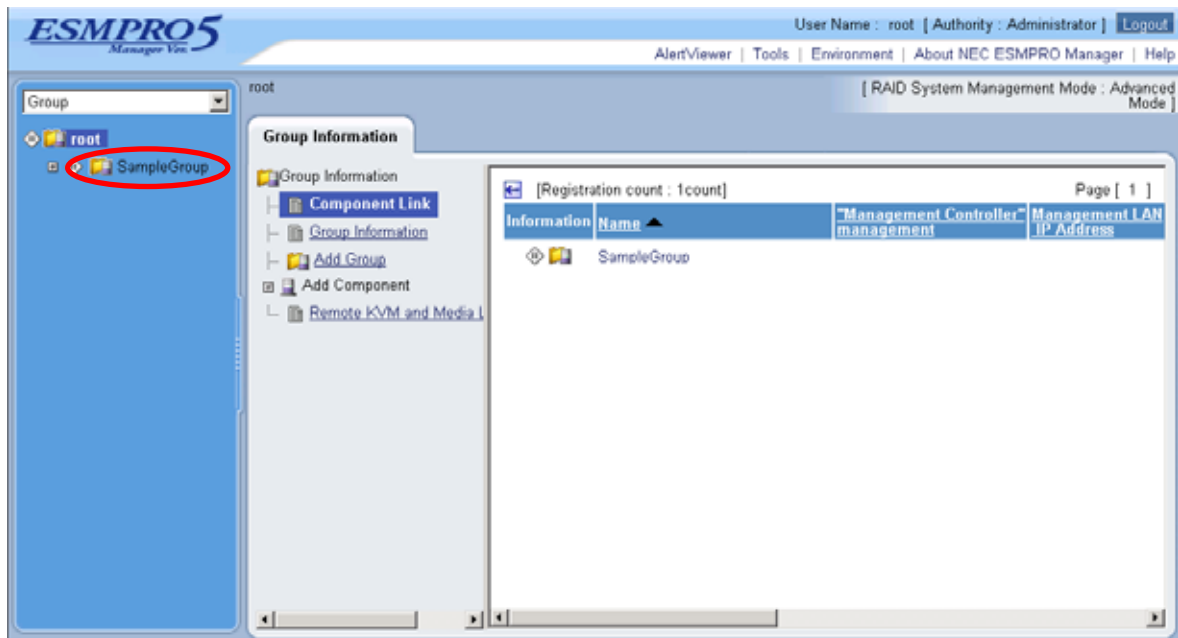


(2) Enter the group name, and click "Add".

The following screen shows an example.



The added group will be displayed on the "Group" tree.



1.3.2 Register the Managed Component

Use either of the two methods to register the managed component.

- **Manual Registration**

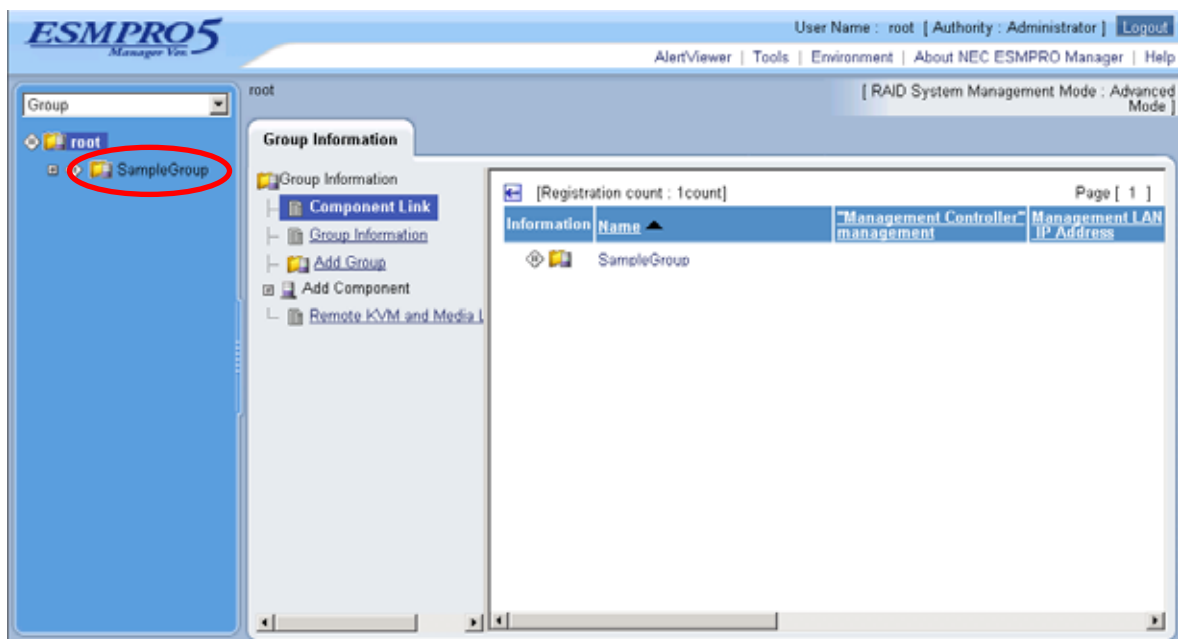
This method requires the operator to directly enter the managed component's information such as the IP address of the BMC and to perform "Check Connection".

- **Auto Registration**

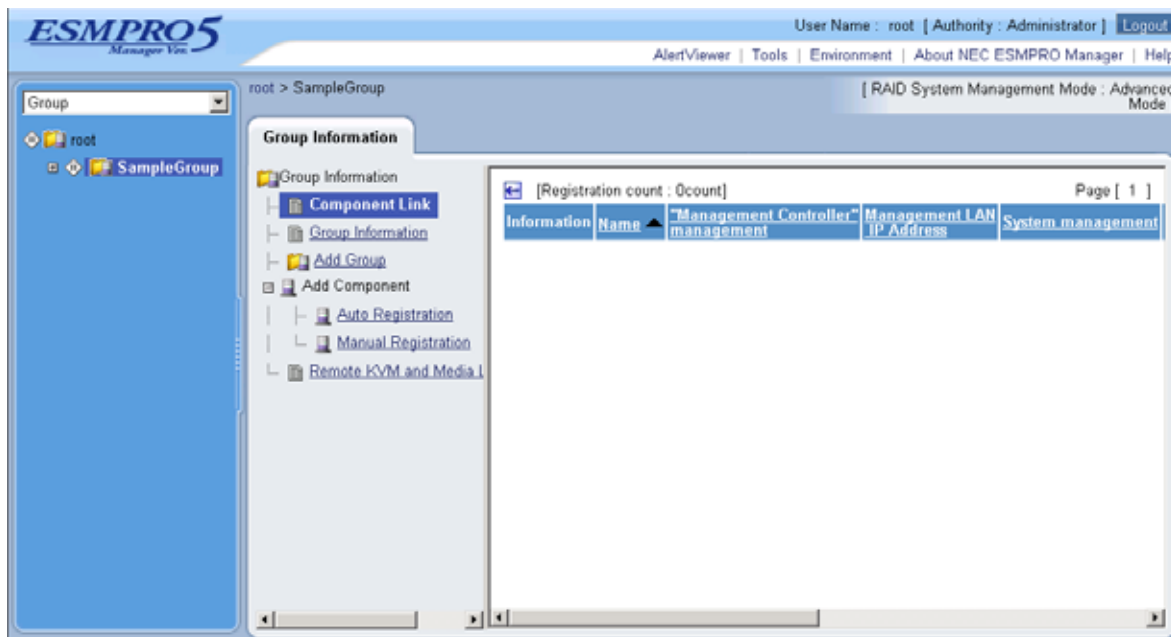
This method automatically searches the network for managed components that are not registered yet on the NEC ESMPRO Manager, and registers the managed components. This method is available only when LAN connection is used.

1.3.2.1 Manual Registration

(1) Click the managed component's "Group name".



(2) Click the "Manual Registration" from "Add Component" of "Group Information" tab.



(3) Input the following items:

--"Component Name"

Specify the name of the managed component on NEC ESMPRO Manager.

Assign a name different from other managed component names. Do not enter a name including blank characters. Uppercase characters are distinguished from lowercase characters.

--"Alias"

Specify the information about the managed component. Do not enter a name including blank characters. Uppercase characters are distinguished from lowercase characters.

--"Group"

Specify the group to which the managed component will belong.

"Common Setting"

--"OS IP Address"

Specify the OS IP Address of the managed component.

"System management"

--"Management"

Select "Registration" to manage the system of the component.

--"SNMP Community Name(Get)"

SNMP Community Name which is specified at SNMP Agent running on the managed component.

It is necessary to get the information, configure, monitor via SNMP

--"SNMP Community Name(Set)"

When you want to set SNMP Community names for Get and Set separately on the managed component, specify the SNMP Community name for Set in this field by alphanumeric characters.

If it is not specified, SNMP Community name for Get will be used.

"RAID system management"

--"Management"

Select "Registration" to manage the RAID system of the component.

"NEC ExpressUpdate"

--"Updates via NEC ExpressUpdate Agent"

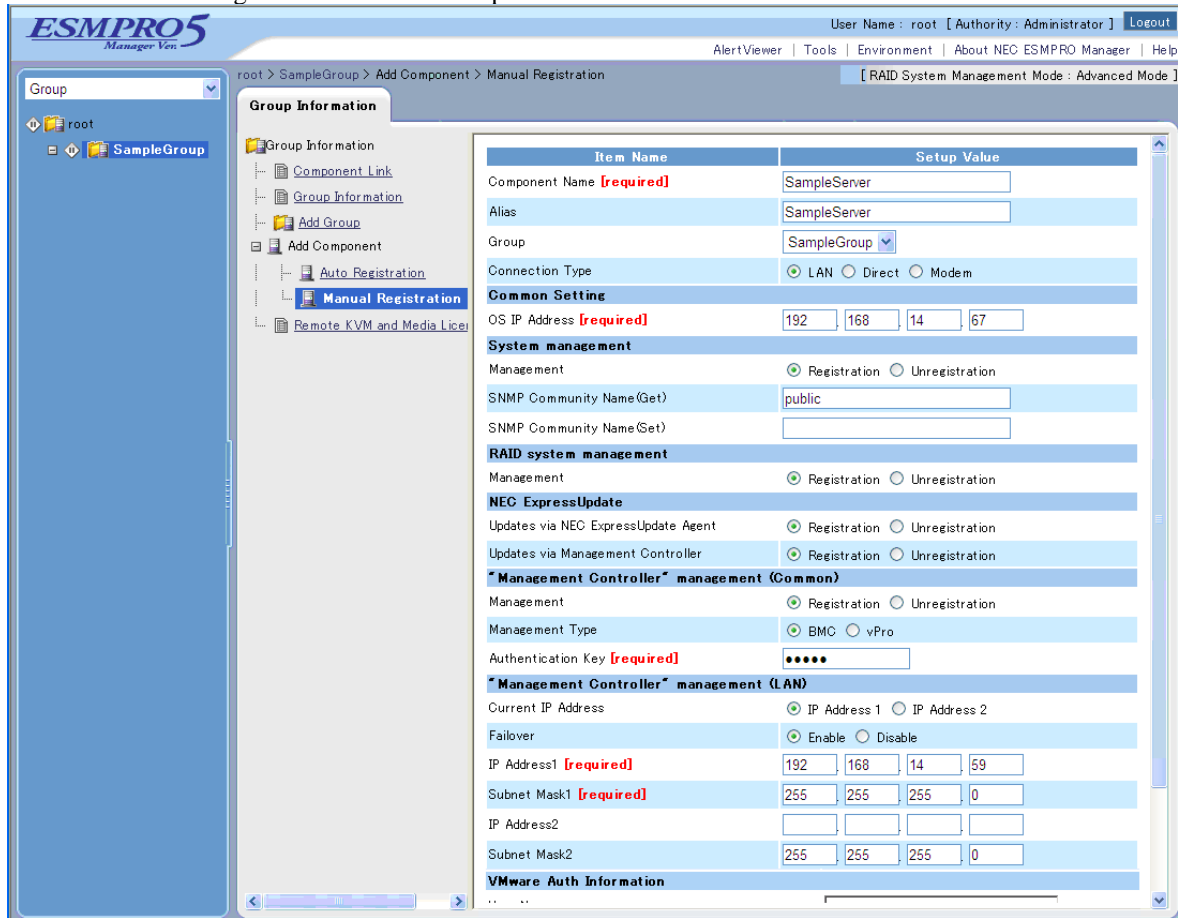
Select "Registration" to manage the component using NEC ExpressUpdate.

--"Updates via Management Controller"

Select "Registration" to manage the component using Management Controller.

"Management controller management (Common)"
--"Management"
If NEC ESMPRO Manager manages the "Management controller" on the managed component, select "Registration".
--"Management Type"
Select "BMC".
--"Authentication Key"
Enter the "authentication key" that you set in the "BMC configuration information" of the managed component.
"Management controller management (LAN)"
--"IP Address 1"
Enter the IP address that is specified on LAN1 of the BMC configuration for the managed component.
If the managed component is a fault tolerant server, you should enter the IP address of the management LAN port for the CPU/IO module 0 to the form.
If the managed component is a server which has EXPRESSSCOPE Engine SP3(2BMC model), you should enter the IP address of the management LAN port for the Master BMC to the form.
--"Subnet Mask1"
Enter the subnet mask that is specified on LAN1 of the BMC configuration for the managed component.
If the managed component is a fault tolerant server, you should enter the subnet mask of the management LAN port for the CPU/IO module 0 to the form.
If the managed component is a server which has EXPRESSSCOPE Engine SP3(2BMC model), you should enter the subnet mask of the management LAN port for the Master BMC to the form.
--"IP Address 2"
Enter the IP address that is specified on LAN2 of the BMC configuration for the managed component.
If the managed component is a fault tolerant server, you should enter the IP address of the management LAN port for the CPU/IO module 1 to the form.
If the managed component is a server which has EXPRESSSCOPE Engine SP3(2BMC model), you should enter the IP address of the management LAN port for the Standby BMC to the form.
--"Subnet Mask1"
Enter the subnet mask that is specified on LAN2 of the BMC configuration for the managed component.
If the managed component is a fault tolerant server, you should enter the subnet mask of the management LAN port for the CPU/IO module 1 to the form.
If the managed component is a server which has EXPRESSSCOPE Engine SP3(2BMC model), you should enter the subnet mask of the management LAN port for the Standby BMC to the form.

The following screen shows an example.



(4) Click "Add".

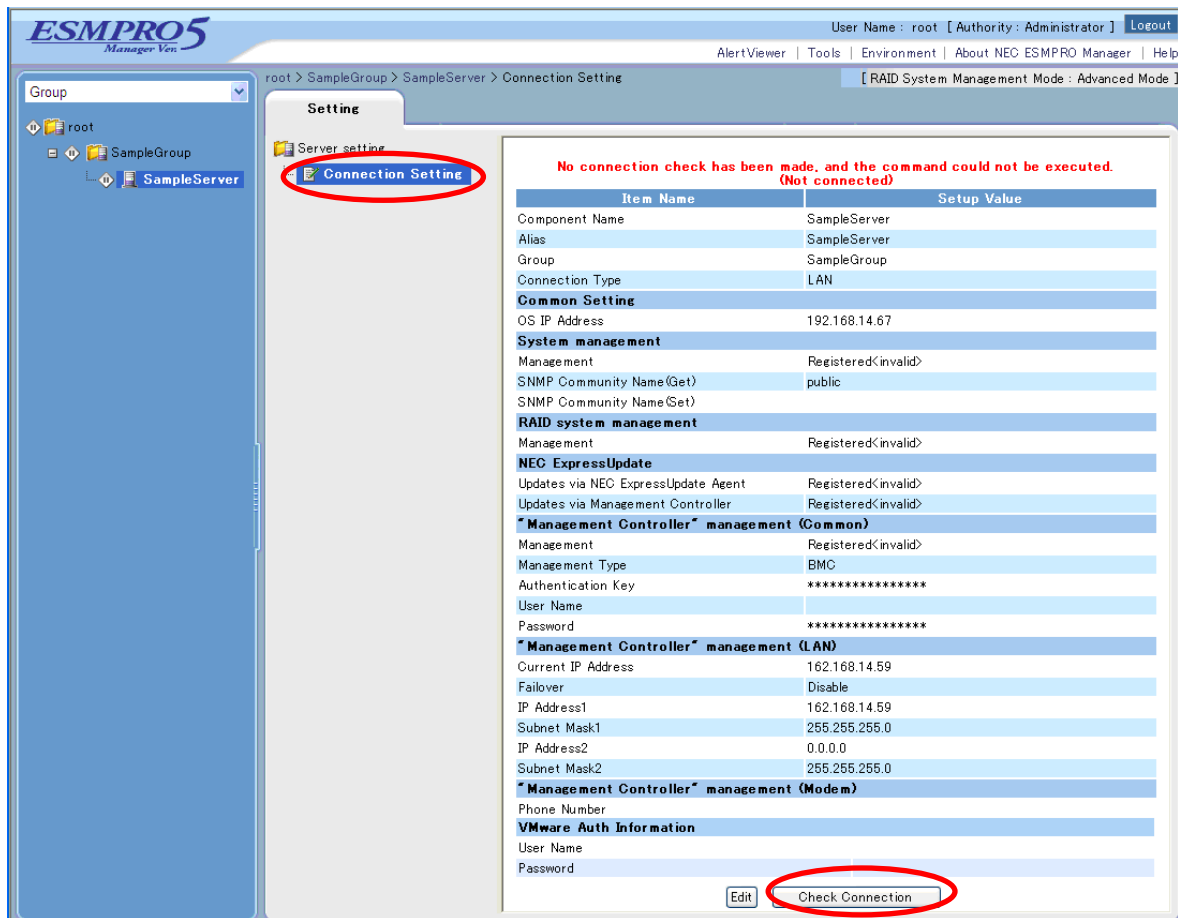
TIPS:

- A managed component cannot be controlled remotely by only registering it. Perform a "Check Connection".

- (5) Click "Connection Setting" from "Setting" tab of the managed component.
"Connection Setting" view is displayed.

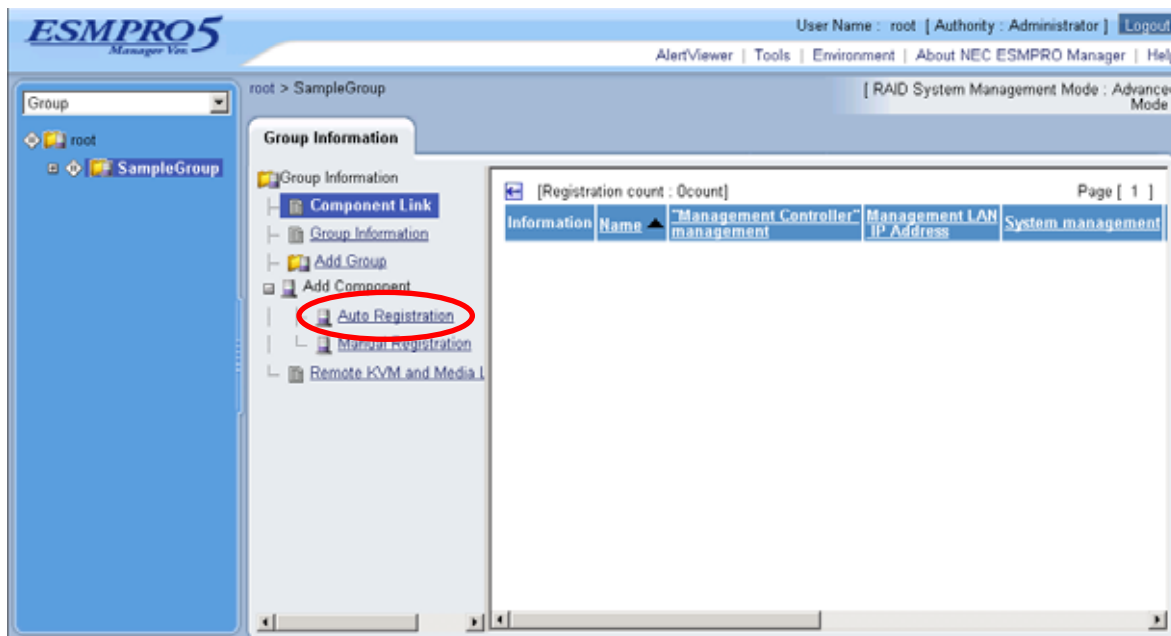
NEC ESMPRO Manager will execute "Check Connection" and collect the component information for the management.

When the "Check Connection" is completed, the NEC ESMPRO Manager starts to control the managed component.



1.3.2.2 Auto Registration

- (1) Click the managed component's "Group name" on the "Group" tree.
- (2) Click the "Auto Registration" from "Add Component" of "Group Information" tab.



- (3) Input the following items:

--"Search Mode"

With "Network Address Search" selected, the NEC ESM PRO Manager searches for the managed components using the specified network address.

With "IP Address Range Search" selected, the NEC ESM PRO Manager searches for the managed components using the IP address range.

--"Network Address Search"

When you select "Network Address Search" for "Search Mode", specify the network address and network mask of the managed component to be searched for.

--"IP Address Range Search"

When you select "IP Address Range Search" for "Search Mode", specify the start IP address and end IP address of the range in which managed components are to be searched for.

"Common"

--"Registration Group"

Specify the group to which the managed component will belong.

"System management"

--"Search"

Select "Enable" to manage the system of the component.

"RAID system management"

--"Search"

Select "Enable" to manage the RAID system of the component.

"NEC ExpressUpdate"

--"Search"

Select "Enable" to manage the component using NEC ExpressUpdate.

"Management controller management"

--"Search"

Select "Enable" to manage the "Management controller" of the component.

--"Features NEC ExpressUpdate"

Select "Enable" to feature NEC ExpressUpdate.

--"Authentication Key"

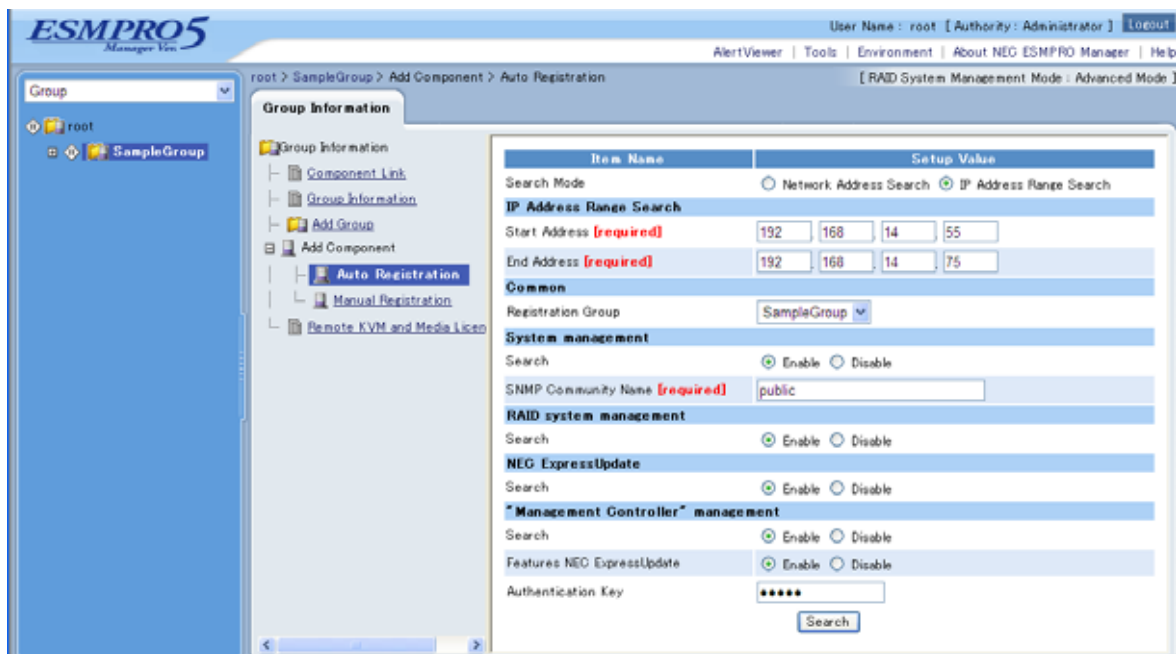
Enter the "authentication key" that you set in the "BMC configuration information" of the managed component.

CHECK:

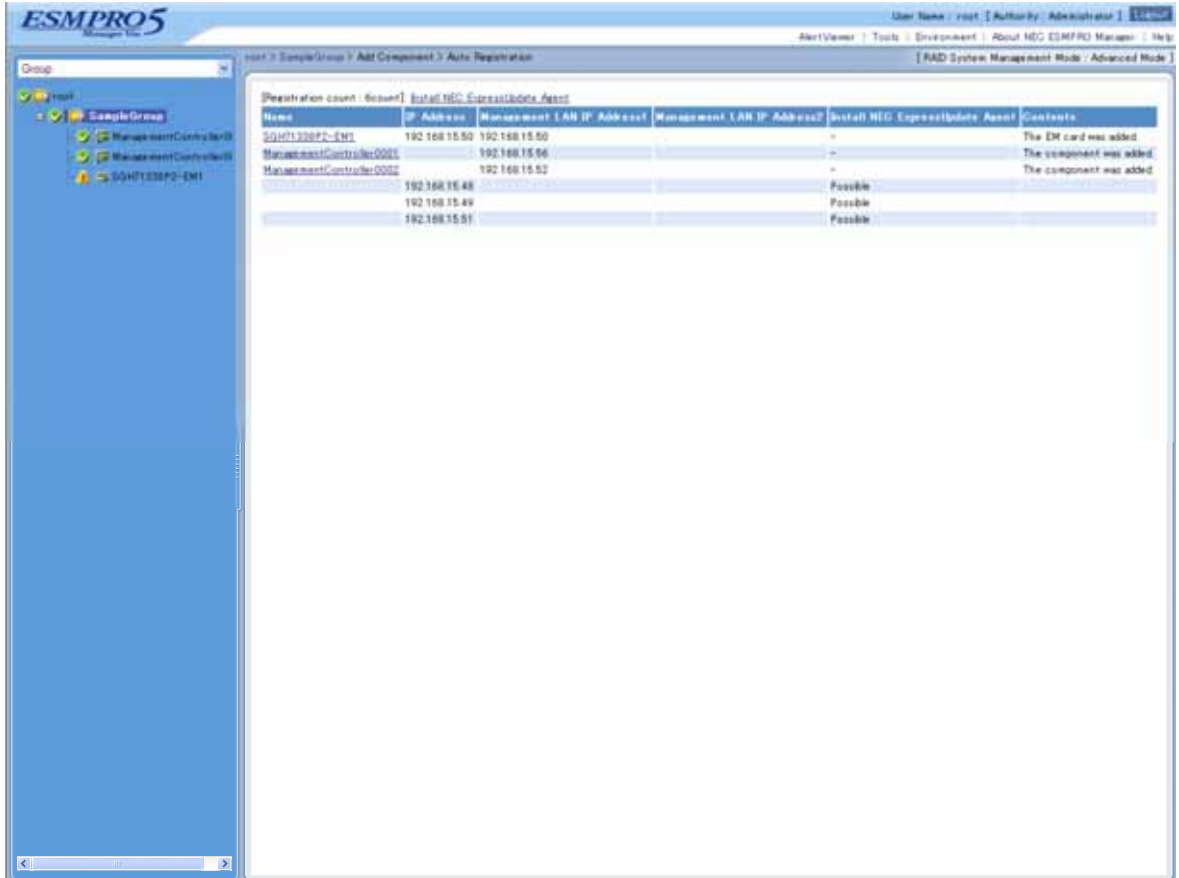
- If you register the "Management Controller" management for a fault tolerant server, you should specify the search range which includes BMC IP addresses of CPU/IO module 0 and 1.
- If you register the "Management Controller" management for a server which has EXPRESSSCOPE Engine SP3(2BMC model), you should specify the search range which includes both BMC IP addresses of Master and Standby.

Click "Search" and then the search for the managed components will start.

The following screen is an example display with "IP Address Range Search" selected.



- (4) When the "Auto Registration" is completed, the NEC ESMPRO Manager starts to control the managed component.



TIPS:

- When the managed component is registered by auto registration but the system management for the managed component cannot be registered, the "Component Name" of the managed component is set to the "ManagementController + number".
You can change the component name on "Component setting" – "Connection Setting".

Chapter2 Setup for Managed Component in which a BMC excluding EXPRESSSCOPE Engine 3 is integrated (for LAN connection)

This chapter explains the setup procedure for the NEC ESMPRO Manager to manage the BMC and NEC ESMPRO Agent Extension ver1.xx (or NEC DianaScope Agent) on a managed component remotely via LAN connection.

2.1 Setup Flow (for LAN connection)

Perform the following setup procedure:

- (1) Connect the NEC ESMPRO Manager server and the managed component on the same network.
- (2) Configure BMC on the managed component.
- (3) Register the managed component on the NEC ESMPRO Manager.

2.2 Configure BMC on Managed Component (for LAN connection)

Configure BMC of the managed component at first.

.....
TIPS:

- This section explains about the minimum setting that is necessary for connection the NEC ESMPRO Manager with the managed component. For details of BMC configuration, see document of each tool.
-

There are two methods for configuring the BMC on a managed component for LAN connection.

■ **Configuration with NEC ESMPRO Agent Extension ver.1.xx, NEC DianaScope Agent or "System Management" tool of NEC EXPRESSBUILDER CD-ROM**

This section explains the configuration procedure using NEC ESMPRO Agent Extension for Windows.

.....
CHECK:

- There are other BMC configuration tools, but do not use the following tools for setup with NEC ESMPRO Manager.
 - NEC MWA Agent
 - "System management" started from NEC EXPRESSBUILDER that does not contain NEC ESMPRO Manager.
-

■ **Configuration with NEC EXPRESSBUILDER DOS based with remote console feature.**

NEC EXPRESSBUILDER DOS based with remote console feature is to configure the BMC on the managed component when a keyboard is not connected.

.....
CHECK:

- Configuration with NEC EXPRESSBUILDER DOS based with remote console feature can be available only from the NEC EXPRESSBUILDER that contains NEC ESMPRO Manager.
 - See the user's guide provided with the managed component about NEC EXPRESSBUILDER DOS based with remote console feature. If there is the description about NEC EXPRESSBUILDER DOS based with remote console feature, the feature is available.
-

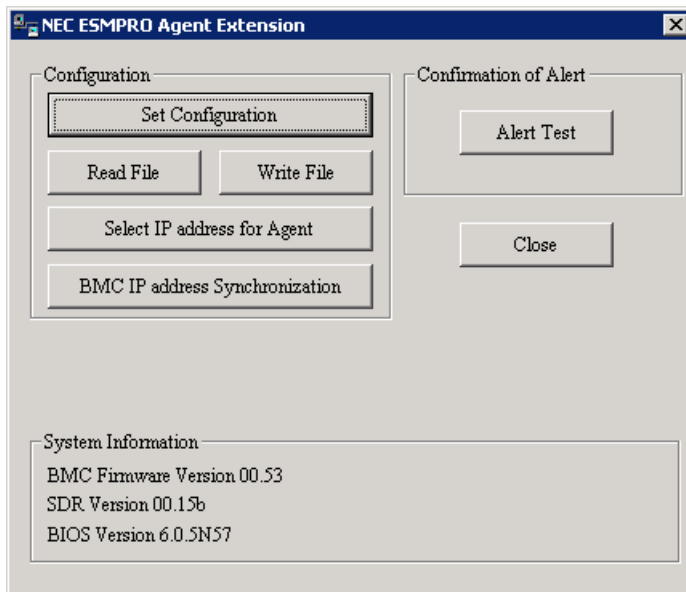
2.2.1 Configuration with NEC ESMPRO Agent Extension ver1.xx (for LAN connection)

2.2.1.1 Configuration with NEC ESMPRO Agent Extension ver1.xx for Windows

This section explains the configuration procedure using NEC ESMPRO Agent Extension for Windows.

- (1) After booting Windows on the managed component, click Windows "start" and start the BMC configuration function of NEC ESMPRO Agent Extension.
- (2) The main dialog box will be appeared.
Click "Set Configuration". When a confirmation message is displayed, click "OK".

The following screen shows example for the managed component that the BMC uses standard LAN port.

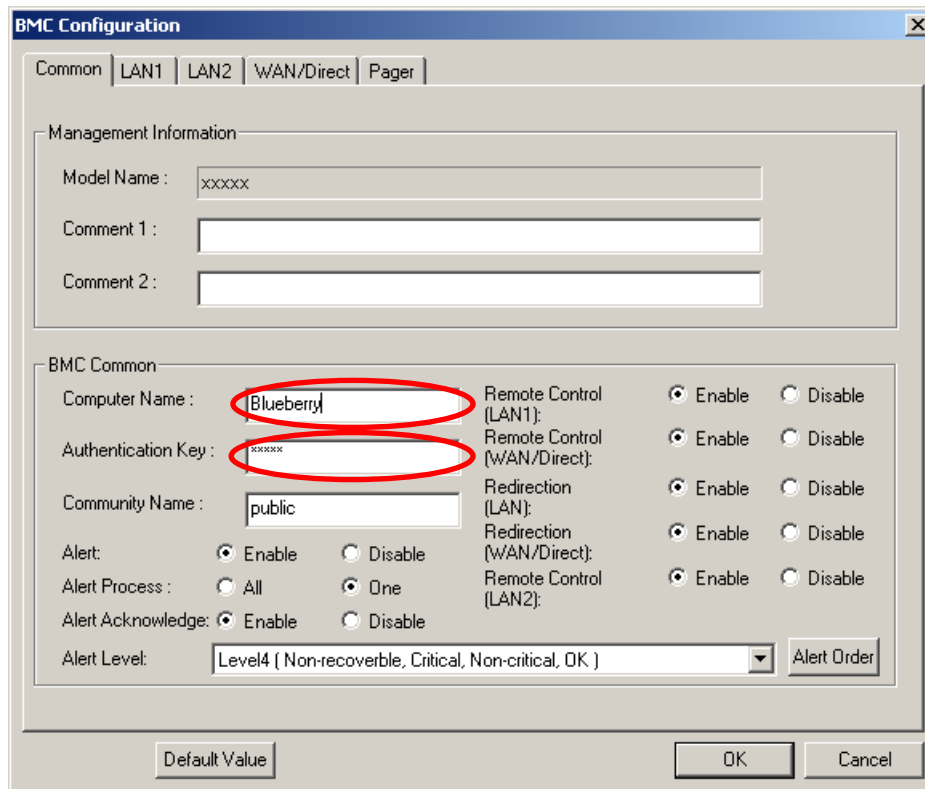


(3) "BMC Configuration" dialog box will be display. Click "Common" tab page.

Be sure to set the below item. The other items can be used with the default values.

- "Computer Name"
Enter a unique name for each managed component.
- "Authentication Key"

The following screen shows example.



TIPS:

- If a managed component is compatible with SOL and "Enable" is selected for the item "Redirection (LAN)," the following items necessary for the remote console via the LAN will be changed automatically.
 "Common" tab page – "Redirection (WAN/Direct)": Enable
 "WAN/Direct" page – "Flow Control": RTS/CTS

(4) Select "LAN1" tab page for LAN port 1 of the BMC.

Set the below items. The other items can be used with the default values.

-- "Obtain an IP Address automatically (DHCP)"

Determine whether to dynamically obtain an IP address from a DHCP server.

If the item is set enable and registered, the BMC set the value obtained from DHCP server on "IP Address", "Subnet Mask" and "Default Gateway".

You can set enable on the item only if the BMC supports this capability.

-- "IP Address"

Case that BMC on the managed component uses Management LAN port; enter the IP address for the Management LAN port.

Case that BMC on the managed component uses a standard LAN port; be sure to make the setting identical to the setting on the operating system of the managed component.

-- "Subnet Mask"

Enter the subnet mask for the IP address.

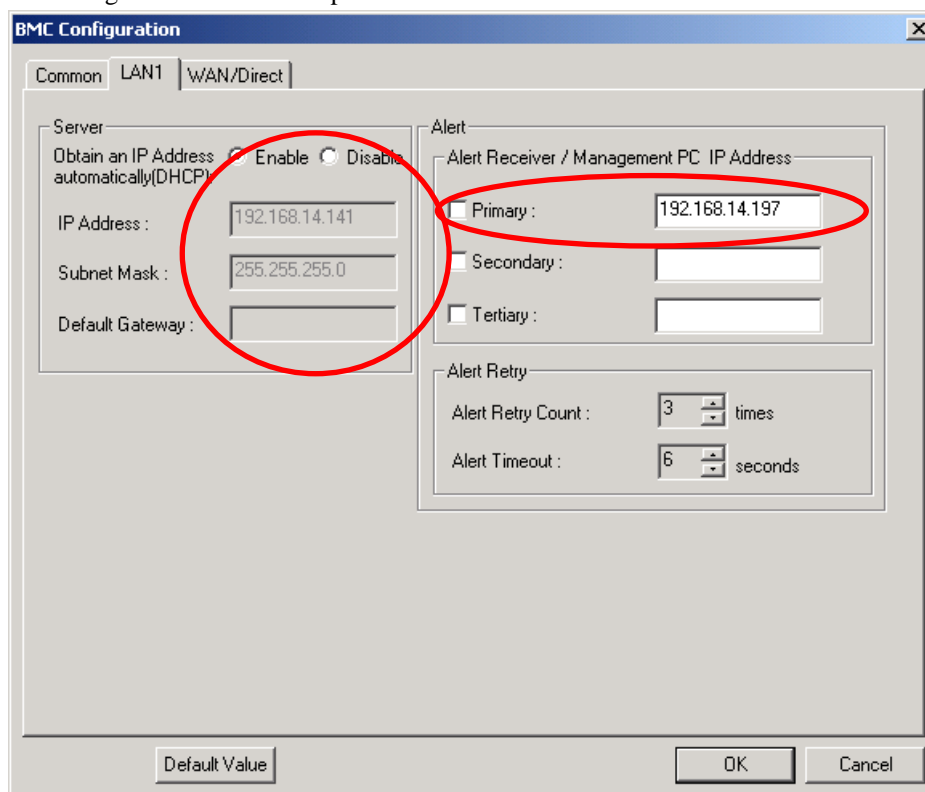
-- "Default Gateway"

Enter the default gateway if the managed component connects to NEC ESMPRO Manager Server via any gateway

-- "Alert Receiver / Management PC IP Address" – "Primary".

Enter the IP address of the management PC.

The following screen shows example.



TIPS:

- The "LAN2" tab is displayed only when the managed component's BMC supports communication via LAN2. To communicate with the NEC ESM PRO Manager via LAN2, make the setting on the "LAN2" tab as same as "LAN1" tab.

CHECK:

- Please set the following items for NEC ESM PRO Manager to receive alerts from the BMC.
 - LAN1 / LAN2
 - Alert Receiver / Management PC IP Address – Primary :
IP address of the management PC on which NEC ESM PRO Manager is installed.
* Please set the checkbox to enable.

- (5) If you set "Default Gateway", please connect the managed component via LAN port used by BMC and the gateway to network.
If you set "Alert Receiver / Management PC IP Address" on same network with the managed component, please connect the managed component via LAN port used by BMC and the alert receiver/management PC to network.
- (6) Click "OK".
The configuration information will be set in the BMC. The MAC addresses of the gateway and the alert receivers will be also set in the BMC.

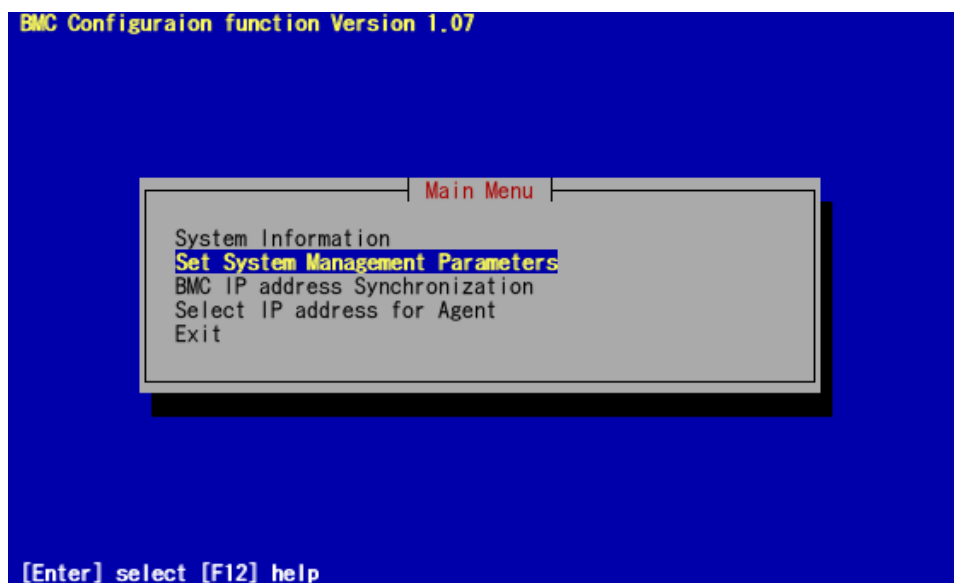
2.2.1.2 Configuration with NEC ESMPRO Agent Extension ver.1.xx for Linux

This section explains the configuration procedure using NEC ESMPRO Agent Extension ver.1.xx for Linux.

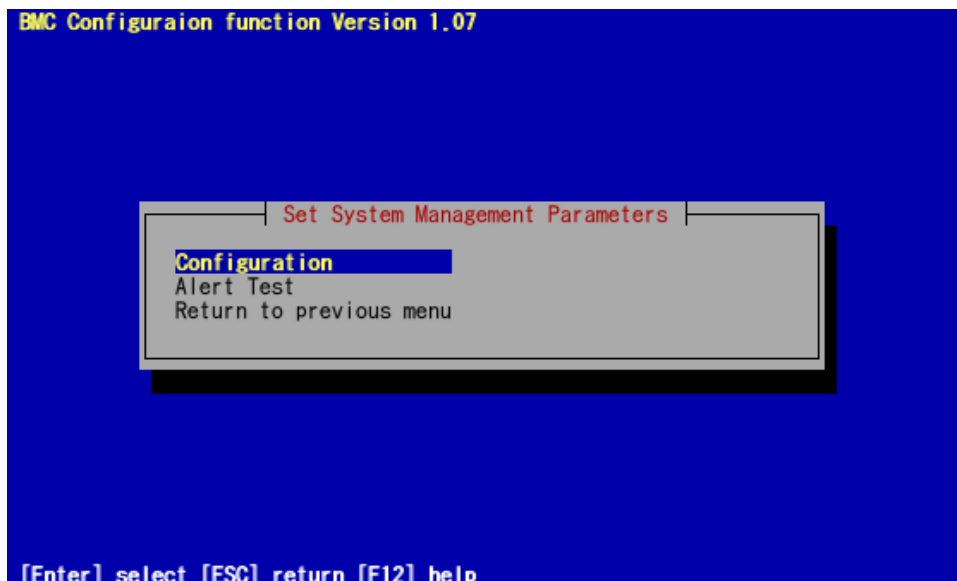
- (1) After booting Linux on the managed component, start the BMC configuration function of NEC ESMPRO Agent Extension by the following command.

```
/opt/nec/esmpro_sa_ex_sysman/agentconf
```

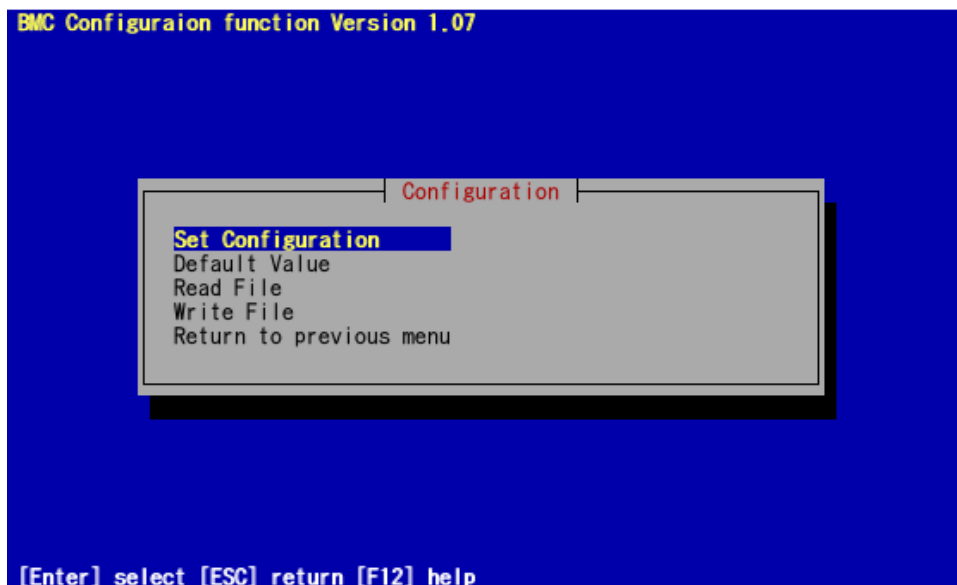
- (2) "Main Menu" screen will be displayed.
Select "Set System Management Parameters".
The following screen shows example for the managed server that the BMC uses standard LAN port.



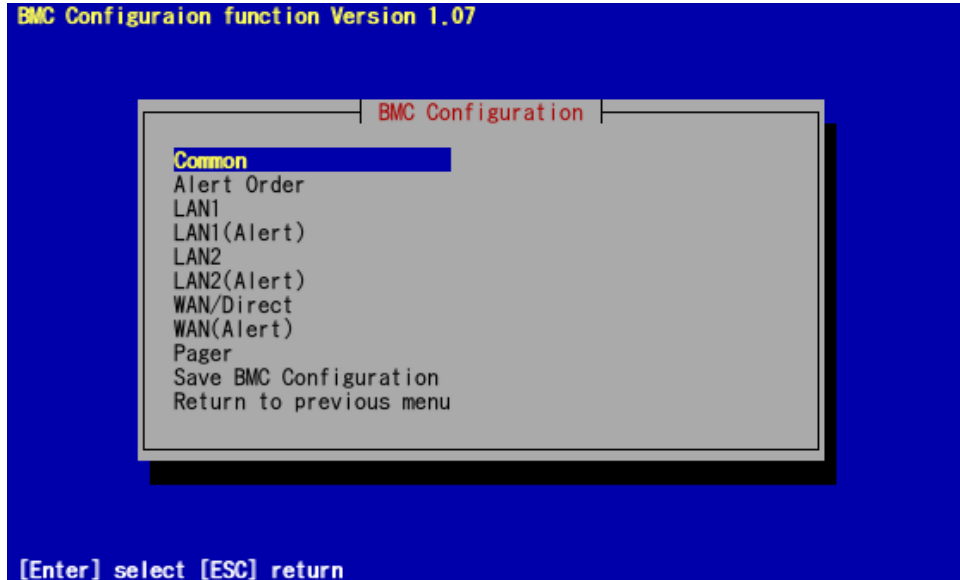
- (3) "Set System Management Parameters" screen will be displayed.
Select "Configuration".



- (4) "Configuration" screen will be displayed.
Select "Set Configuration".



- (5) "BMC Configuration" screen will be displayed.
Select "Common".

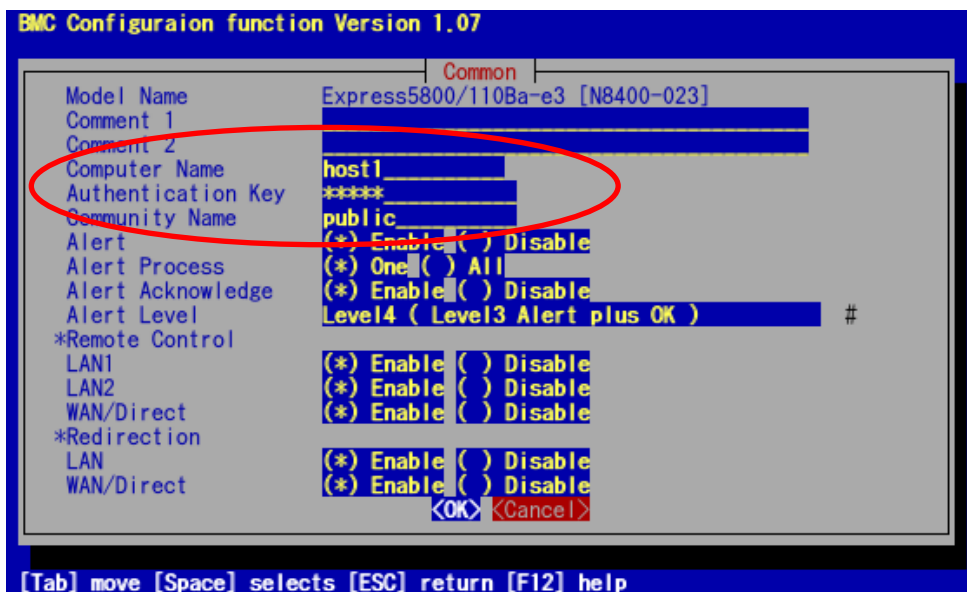


- (6) "Common" screen will be displayed.

Be sure to set the below item. The other items can be used with the default values.

- "Computer Name"
Enter a unique name for each managed server.
- "Authentication Key"

The following screen shows example.



TIPS:

- If a managed server is compatible with SOL and "Enable" is selected for the item "Redirection (LAN)," the following items necessary for the remote console via the LAN will be changed automatically.
 "Common" screen – "Redirection (WAN/Direct)": Enable
 "WAN/Direct" screen – "Flow Control": RTS/CTS
-

CHECK:

- Please set the following items for NEC ESMPRO Manager to receive alerts from the BMC.
 - LAN1 (Alert) / LAN2 (Alert) :
 - Primary Alert Receiver : Enable
 - IP Address:
 IP address of the management PC on which NEC ESMPRO Manager is installed.
-

(7) Select "LAN1" from "BMC Configuration" screen.

Set the below items. The other items can be used with the default values.

-- "Obtain an IP Address automatically (DHCP)"

Determine whether to dynamically obtain an IP address from a DHCP server.

If the item is set enable and registered, the BMC set the value obtained from DHCP server on "IP Address", "Subnet Mask" and "Default Gateway".

You can set enable on the item only if the BMC supports this capability.

--"IP Address"

Case that BMC on the managed server uses Management LAN port; enter the IP address for the Management LAN port.

Case that BMC on the managed server uses a standard LAN port; be sure to make the setting identical to the setting on the operating system of the managed server.

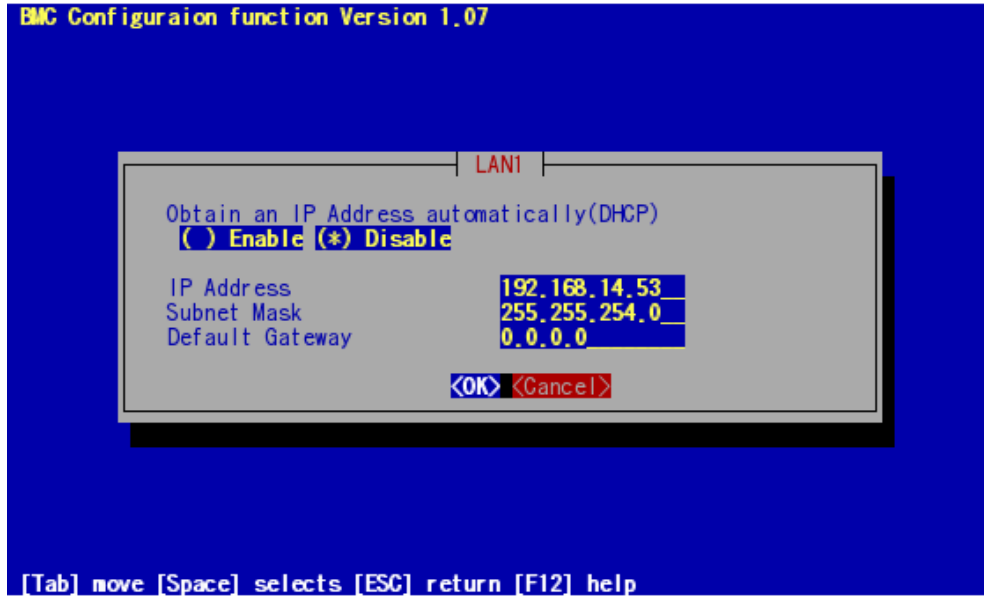
-- "Subnet Mask"

Enter the subnet mask for the IP address.

-- "Default Gateway"

Enter the default gateway if the managed server connects to NEC ESMPRO Manager Server via any gateway

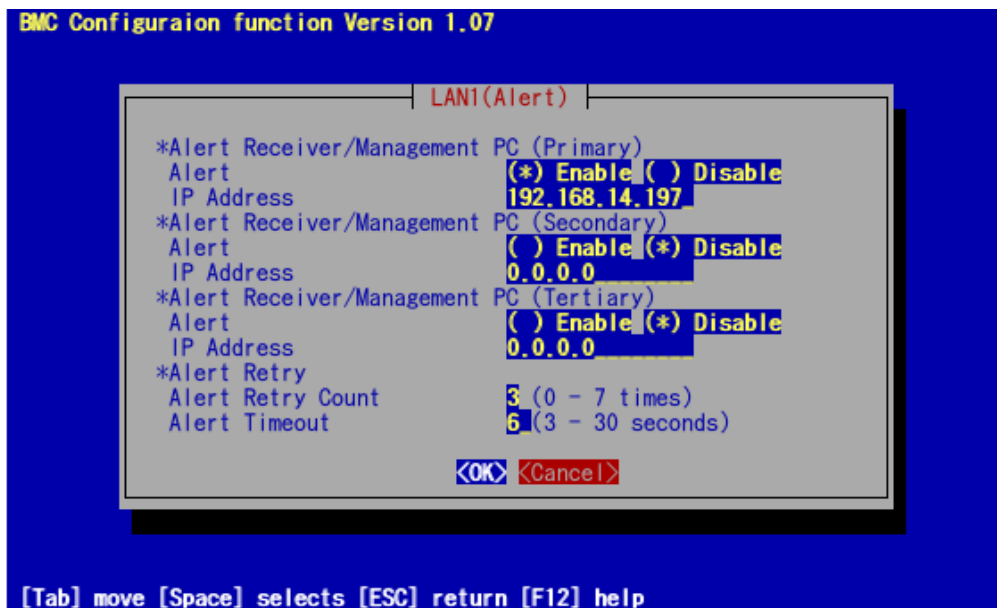
The following screen shows example.



-- "Alert Receiver / Management PC IP Address" – "Primary".

Enter the IP address of the management PC.

The following screen shows example.



CHECK:

- The "LAN2" in "BMC Configuration" screen is displayed only when the managed component's BMC supports communication via LAN2. To communicate with the NEC ESMPRO Manager via LAN2, make the setting on the "LAN2" and "LAN2(Alert)" as same as "LAN1" and "LAN1(Alert)".
-

- (8) If you set "Default Gateway", please connect the managed component via LAN port used by BMC and the gateway to network.
If you set "Alert Receiver / Management PC IP Address" on same network with the managed component, please connect the managed component via LAN port used by BMC and the alert receiver/management PC to network.
- (9) Select "Save BMC Configuration" from "BMC Configuration" screen.
The configuration information will be set in the BMC. The MAC addresses of the gateway and the alert receivers will be also set in the BMC.

2.2.2 Configuration with NEC EXPRESSBUILDER DOS based with remote console feature (for LAN connection)

NEC EXPRESSBUILDER DOS based with remote console feature can configure the BMC on the managed component with the configuration information FD containing the configuration information.

CHECK:

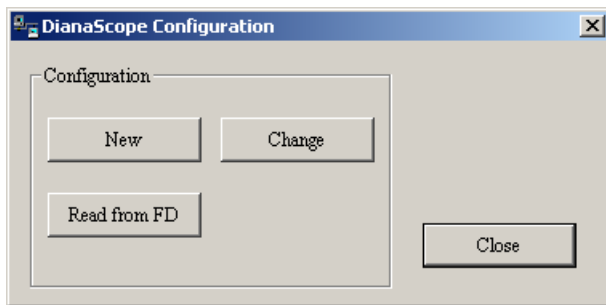
- Configuration with NEC EXPRESSBUILDER DOS based with remote console feature is available only from the NEC EXPRESSBUILDER that contains NEC ESMPRO Manager.
 - See the user's guide provided with the managed component about NEC EXPRESSBUILDER DOS based with remote console feature.
If there is the description about NEC EXPRESSBUILDER DOS based with remote console feature, the feature is available.
-

Perform the following procedure:

- (1) Create a configuration information file
- (2) Run NEC EXPRESSBUILDER DOS based with remote console feature

2.2.2.1 Create a configuration information file

- (1) Start the NEC ESMPRO Manager configuration installed on any PC to create the configuration information file.



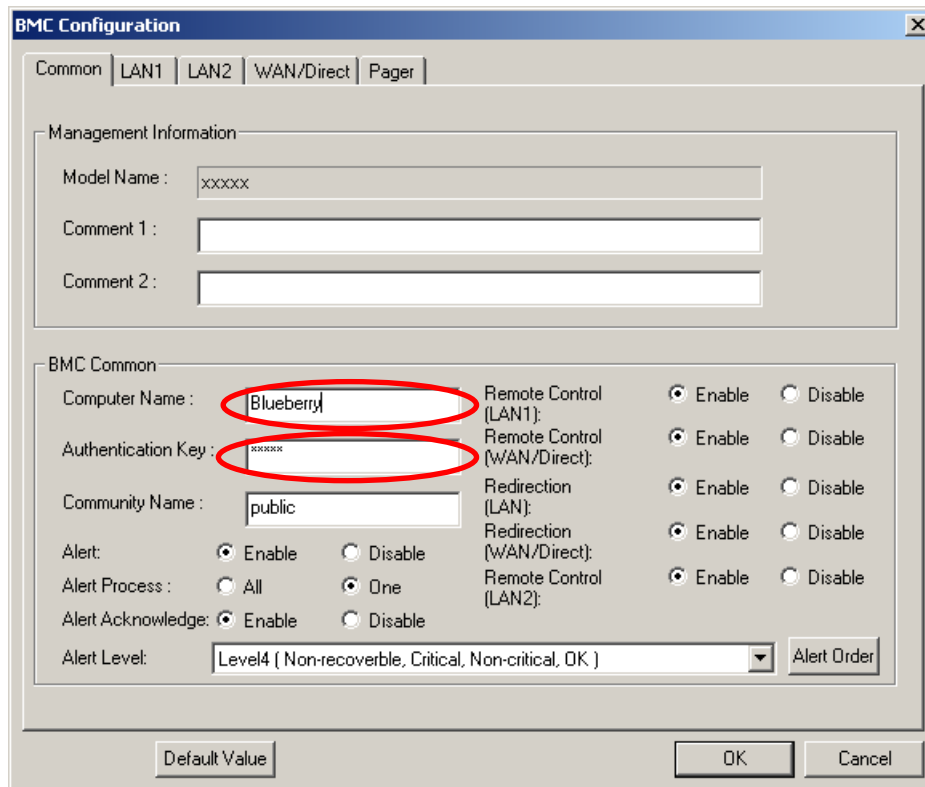
- (2) Click "New". The confirming message will be displayed. Click "OK".

- (3) The "BMC Configuration" dialog box will appear.
Click "Common" tab page.

Be sure to set the below item. The other items can be used with the default values.

- "Computer Name"
Enter a unique name for each managed component
- "Authentication Key"
- Set "Remote Control (LAN)", "Remote Control (WAN/Direct)", "Redirection (LAN)" and "Redirection (WAN/Direct)" to enable

The following screen shows example.

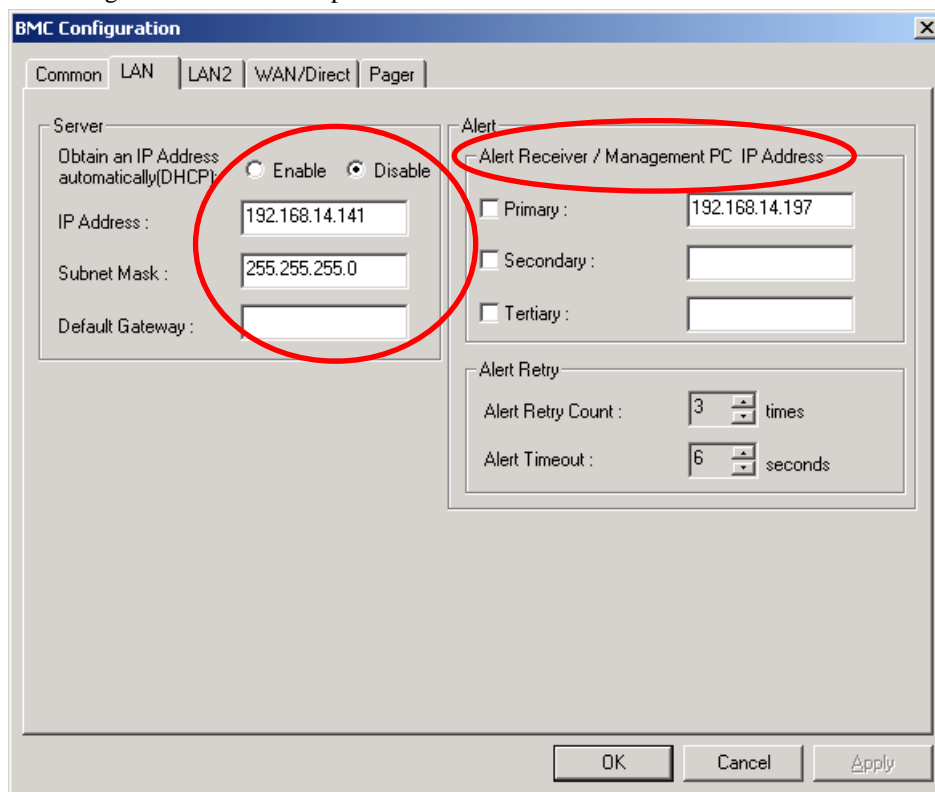


(4) Select "LAN" tab page for LAN port 1 of the BMC.

Set the below items. The other items can be used with the default values.

- "Obtain an IP Address automatically (DHCP)"
 Determine whether to dynamically obtain an IP address from a DHCP server.
 If the item is set enable and registered, the BMC set the value obtained from DHCP server on "IP Address", "Subnet Mask" and "Default Gateway".
 You can set enable on the item only if the BMC supports this capability.
- "IP Address"
 Case that BMC on the managed component uses Management LAN port; enter the IP address for the Management LAN port.
 Case that BMC on the managed component uses a standard LAN port: be sure to make the setting identical to the setting on the operating system of the managed component.
- "Subnet Mask"
 Enter the subnet mask for the IP address.
- "Default Gateway"
 Enter the default gateway if the managed component connects to the management PC via any gateway,
- "Alert Receiver / Management PC IP Address" – "Primary"
 Enter the IP address of the management PC.

The following screen shows example.



CHECK:

- To communicate with the NEC ESMPRO Manager via LAN2, make the setting on the "LAN2" tab as same as "LAN" tab. If the BMC of the managed component does not support communication via LAN2, the values of "LAN2" tab page have no effect with the managed component.
 - The managed component installed the BMC that uses Management LAN port supports the function of "Obtain an IP Address automatically (DHCP)".
-

CHECK:

- Please set the following items for NEC ESMPRO Manager to receive alerts from the BMC.
 - LAN1 / LAN2
 - Platform Event Filter : Enable
 - Alert Receiver / Management PC IP Address :
 - Primary :
IP address of the management PC on which NEC ESMPRO Manager is installed.
-

- (5) Insert a formatted floppy disk into the FD drive, and click "OK". A dialog box will appear for specifying a location where the configuration information is to be saved.
- (6) Specify the floppy disk's root directory as the location.
Enter "CSL_LESS.CFG" for the file name, and click "OK".

The configuration information file will be saved on the floppy disk. This floppy disk is called a "configuration information FD".

CHECK:

- Place the configuration information FD in the write-enable state.
-

2.2.2.2 Run NEC EXPRESSBUILDER DOS based with remote console feature

- (1) If you set "Default Gateway" at creating the configuration information file, please connect the managed component via LAN port used by BMC and the gateway to network.
If you set "Alert Receiver / Management PC IP Address" on same network with the managed component at creating the configuration information file, please connect the managed component via LAN port used by BMC and the alert receiver/management PC to network.
- (2) Configure the BMC of the managed component with the configuration information.
Insert the NEC EXPRESSBUILDER CD-ROM into the CD-ROM drive and the "configuration information FD" into the FD drive on the managed component. And then turn on the component.
After NEC EXPRESSBUILDER DOS based with remote console feature is started and the configuration information is loaded from the FD into the managed component. The MAC addresses of the gateway and the alert receivers will be also set in the BMC. And then the Operating System will be rebooted.

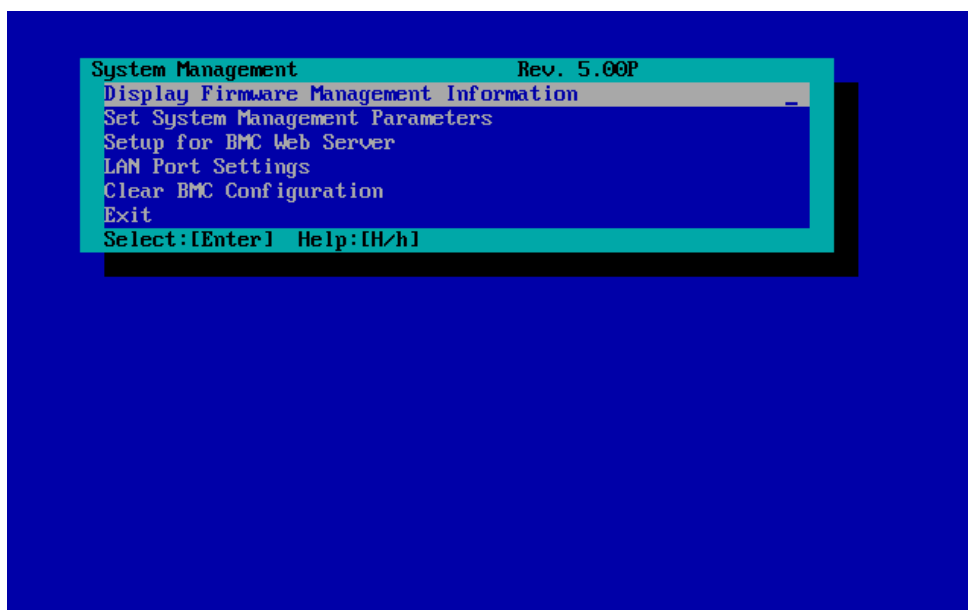
TIPS:

- If the setting in the configuration information file is already configured, the managed component will be not rebooted.
 - When the console-less function for LAN connection is used, the BIOS settings are changed as follows:
 - Serial Port Address: On Board COM B (only for the managed server supporting SOL)
 - Baud Rate: 19.2kbps (only for the managed server supporting SOL)
 - Flow Control : RTS/CTS for the managed server supporting SOL
No Flow for the managed server not supporting SOL
 - Terminal Type (Console Type) : PC-ANSI (only for the managed server supporting SOL)To check whether that the managed component supports SOL, see Appendix C. Managed Components Summary.
 - The managed component is opened the main menu of the NEC EXPRESSBUILDER after executing the feature.
After registering the managed component on the NEC ESMPRO Manager and confirm the remote console for the managed component, remove the NEC EXPRESSBUILDER from the CD-ROM drive if you need.
-

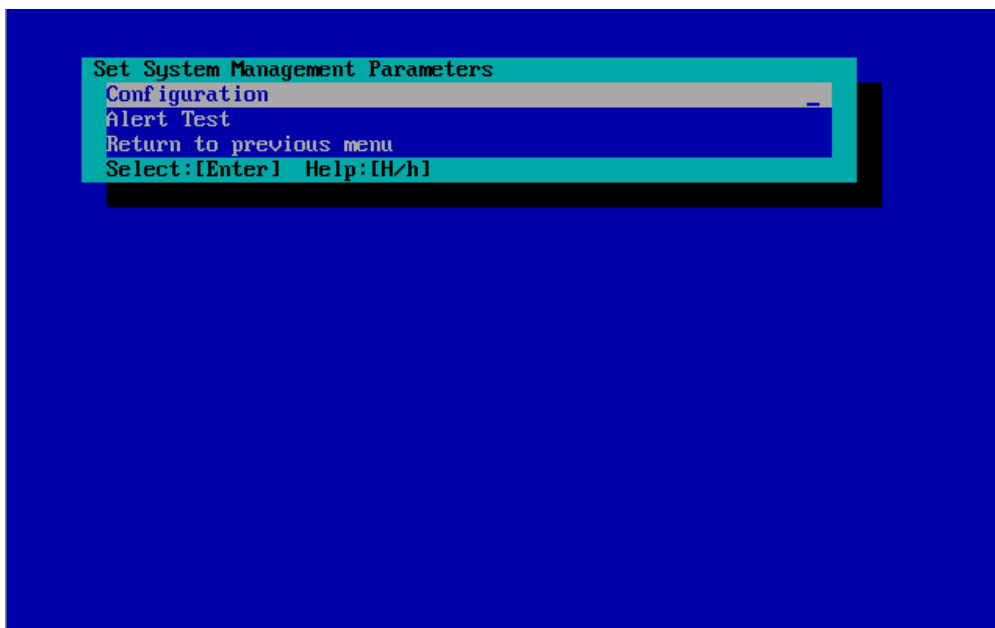
2.2.3 Configuration with NEC EXPRESSBUILDER System Management (for LAN connection)

This section explains the configuration procedure using NEC EXPRESSBUILDER System Management.

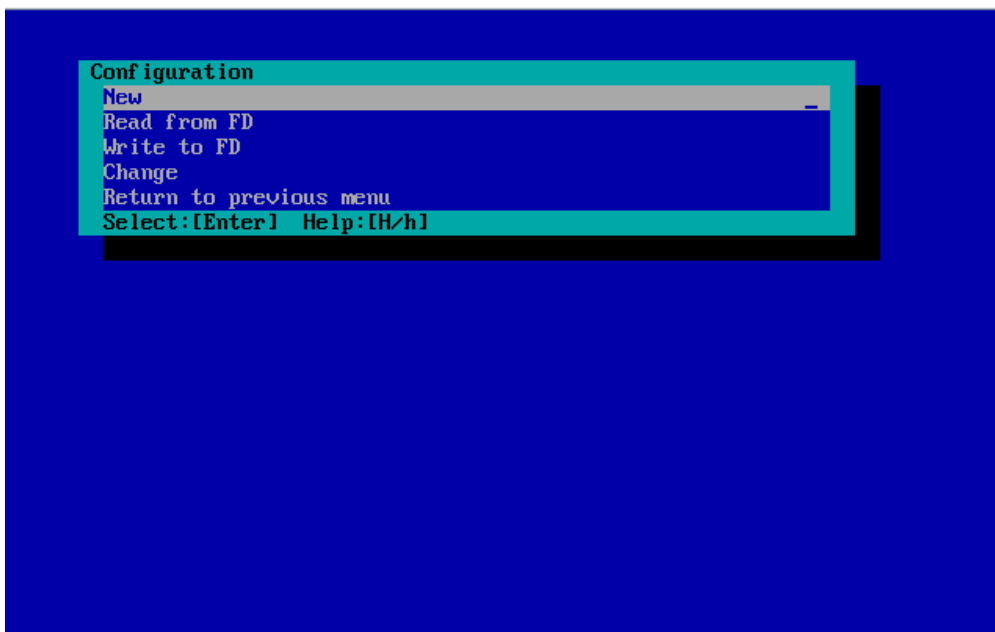
- (1) After booting NEC EXPRESSBUILDER on the managed component, select "System Management" from "TOOL MENU".
- (2) The main screen will be appeared.
Select "System Management".



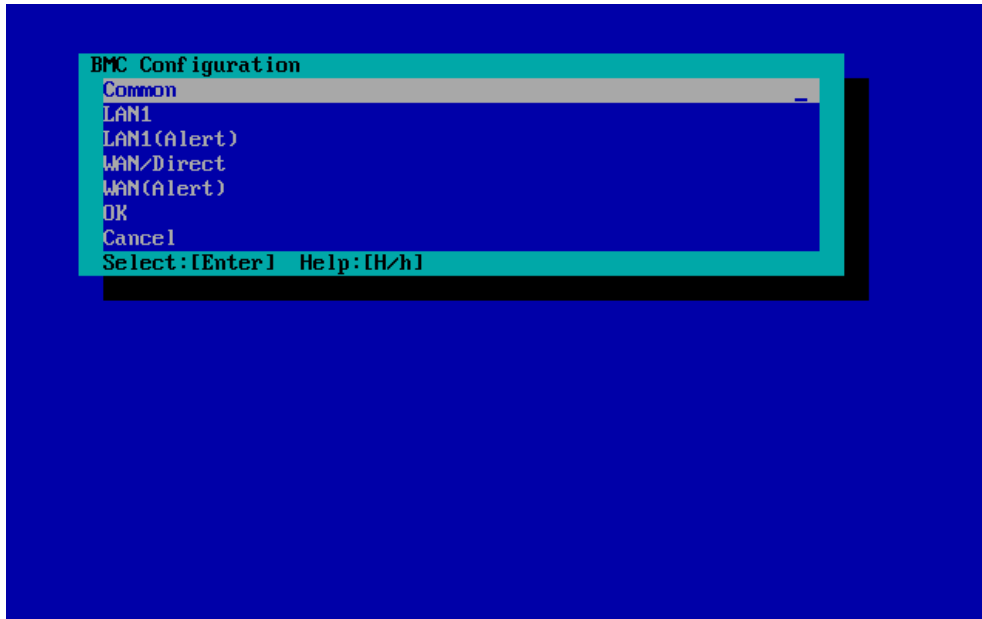
- (3) "Set System Management Parameters" screen will be displayed.
Select "Configuration".



- (4) "Configuration" screen will be displayed.
Select "New".



"BMC Configuration" screen will be displayed.
Select "Common".

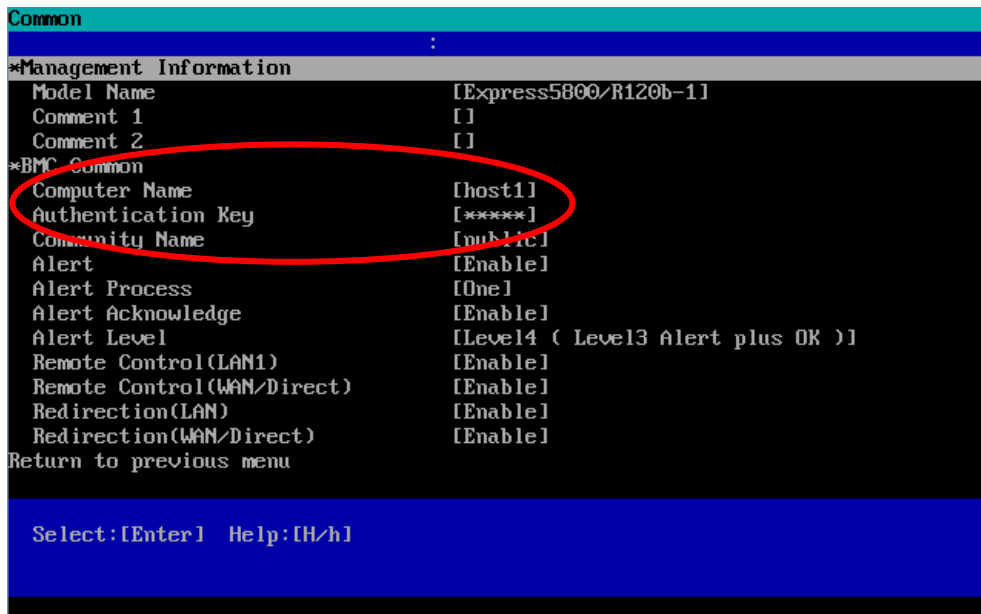


(5) "Common" screen will be displayed.

Be sure to set the below item. The other items can be used with the default values.

- "Computer Name"
Enter a unique name for each managed server.
- "Authentication Key"

The following screen shows example.



TIPS:

- If a managed server is compatible with SOL and "Enable" is selected for the item "Redirection (LAN)", the following items necessary for the remote console via the LAN will be changed automatically.
 "Common" screen – "Redirection (WAN/Direct)": Enable
 "WAN/Direct" screen – "Flow Control": RTS/CTS
-

(6) Select "LAN1" from "BMC Configuration" screen.

Set the below items. The other items can be used with the default values.

-- "Obtain an IP Address automatically (DHCP)"

Determine whether to dynamically obtain an IP address from a DHCP server.

If the item is set enable and registered, the BMC set the value obtained from DHCP server on "IP Address", "Subnet Mask" and "Default Gateway".

You can set enable on the item only if the BMC supports this capability.

-- "IP Address"

Case that BMC on the managed component uses Management LAN port; enter the IP address for the Management LAN port.

Case that BMC on the managed component uses a standard LAN port; be sure to make the setting identical to the setting on the operating system of the managed component.

-- "Subnet Mask"

Enter the subnet mask for the IP address.

-- "Default Gateway"

Enter the default gateway if the managed component connects to NEC ESMPRO Manager Server via any gateway

The following screen shows example.

```

LAN1
:
*Server
Obtain an IP Address automatically(DHCP) [Disable]
IP Address [192.168.14.141]
Subnet Mask [255.255.255.0]
Default Gateway [0.0.0.0]
Return to previous menu

Select:[Enter] Help:[H/h]
    
```

-- "Alert Receiver / Management PC(1)".
Enter the IP address of management PC.

The following screen shows example.

```

LAN1(Alert)
:
*Alert Receiver/Management PC(1)
Alert [Enable]
IP Address [192.168.14.197]
*Alert Receiver/Management PC(2)
Alert [Disable]
IP Address [0.0.0.0]
*Alert Receiver/Management PC(3)
Alert [Disable]
IP Address [0.0.0.0]
*Alert Retry
Alert Retry count [3(times)]
Alert Timeout [6(seconds)]
Return to previous menu

Select:[Enter] Help:[H/h]
    
```

TIPS:

- The "LAN2" in "BMC Configuration" screen is displayed only when the managed component's BMC supports communication via LAN2. To communicate with the NEC ESMPRO Manager via LAN2, make the setting on the "LAN2" and "LAN2(Alert)" as same as "LAN1" and "LAN1(Alert)".
-

CHECK:

- Please set the following items for NEC ESMPRO Manager to receive alerts from the BMC.
 - LAN1 (Alert) / LAN2 (Alert) :
 - Alert Receiver / Management PC (1) :
 - Alert : Enable
 - IP Address :
IP address of the management PC on which NEC ESMPRO Manager is installed.
-

- (7) If you set "Default Gateway", please connect the managed component via LAN port used by BMC and the gateway to network.
If you set "Alert Receiver / Management PC IP Address" on same network with the managed component, please connect the managed component via LAN port used by BMC and the alert receiver/management PC to network.
- (8) Select "Save BMC Configuration" from "BMC Configuration" screen.
The configuration information will be set in the BMC. The MAC addresses of the gateway and the alert receivers will be also set in the BMC.

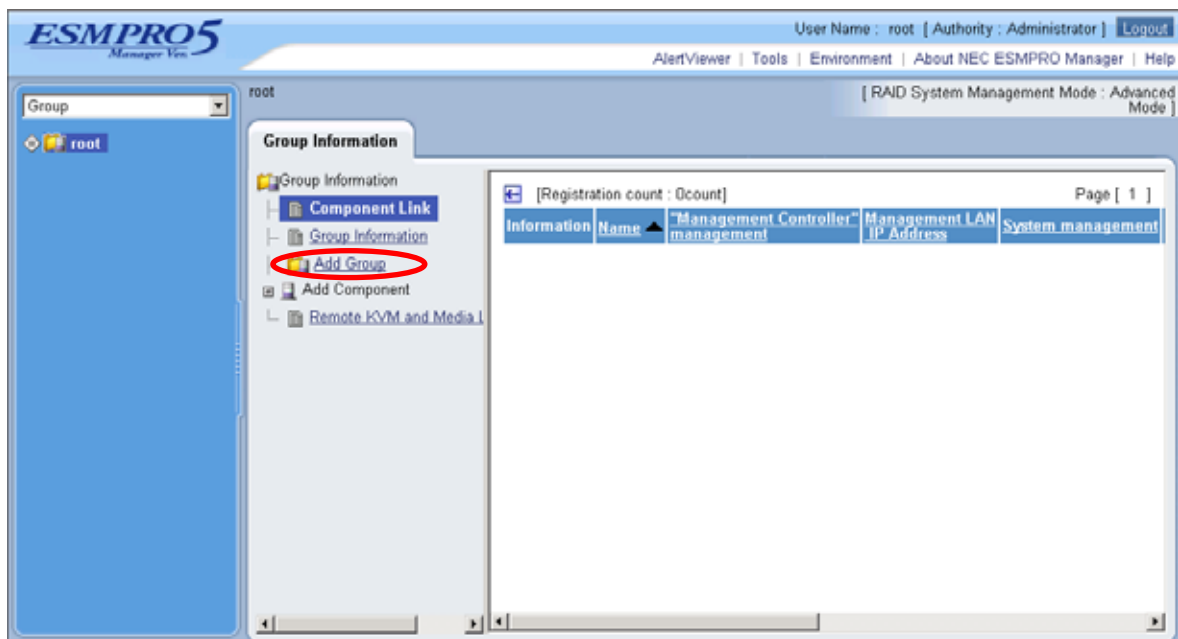
2.3 Register a managed component on NEC ESMPRO Manager (for LAN connection)

To register the managed component on the NEC ESMPRO Manager, login to the NEC ESMPRO Manager and perform in the following order:

- (1) Add the group to which the managed component will belong.
- (2) Register a managed component.

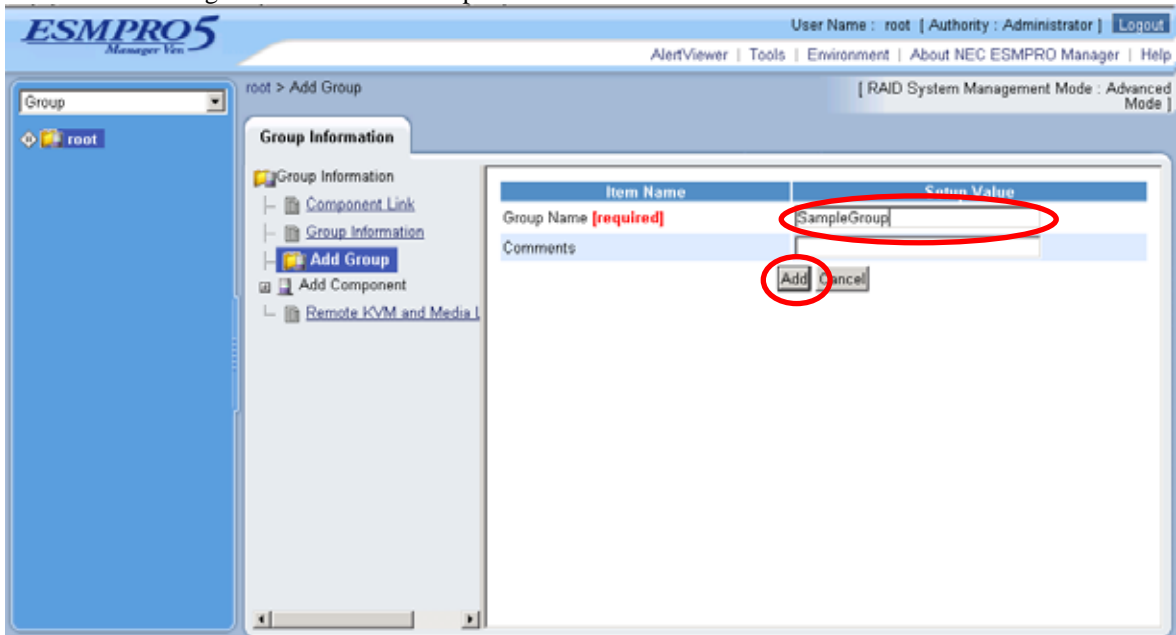
2.3.1 Add Group to which the managed component will belong

- (1) If you want to register the managed component in the specific group, click "Add Group" on the "Group Information" tab.

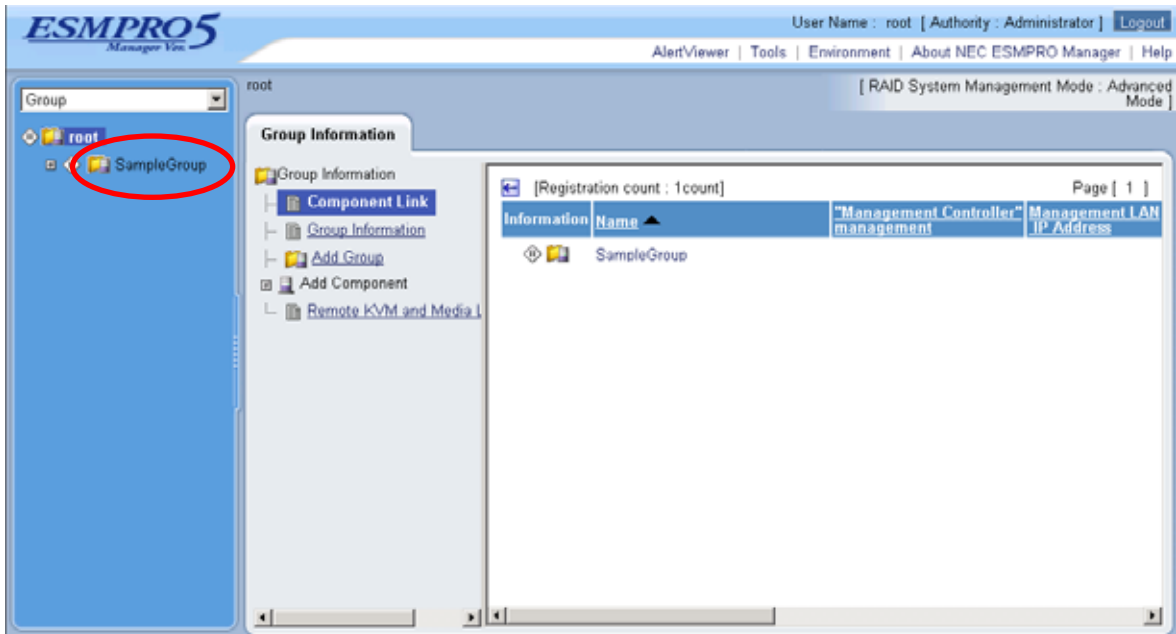


(2) Enter the group name, and click "Add".

The following screen shows an example.



The added group will be displayed on the "Group" tree.



2.3.2 Register the Managed Component (for LAN connection)

Use either of the two methods to register the managed component.

■ Manual Registration

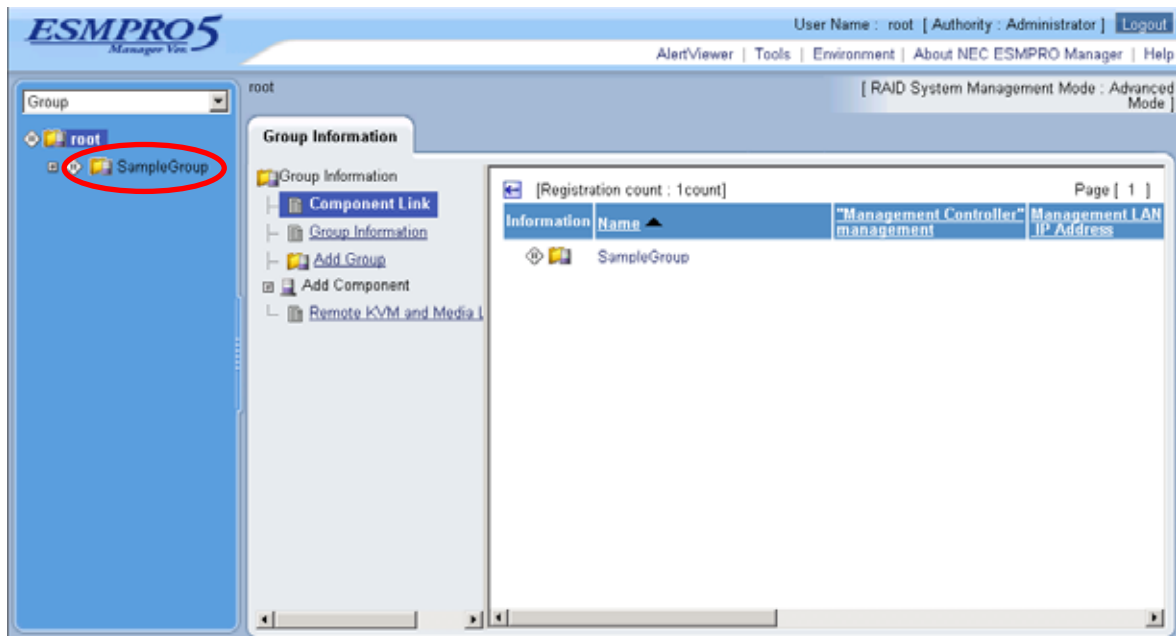
This method requires the operator to directly enter the managed component's information such as the IP address of the BMC and to perform "Check Connection".

■ Auto Registration

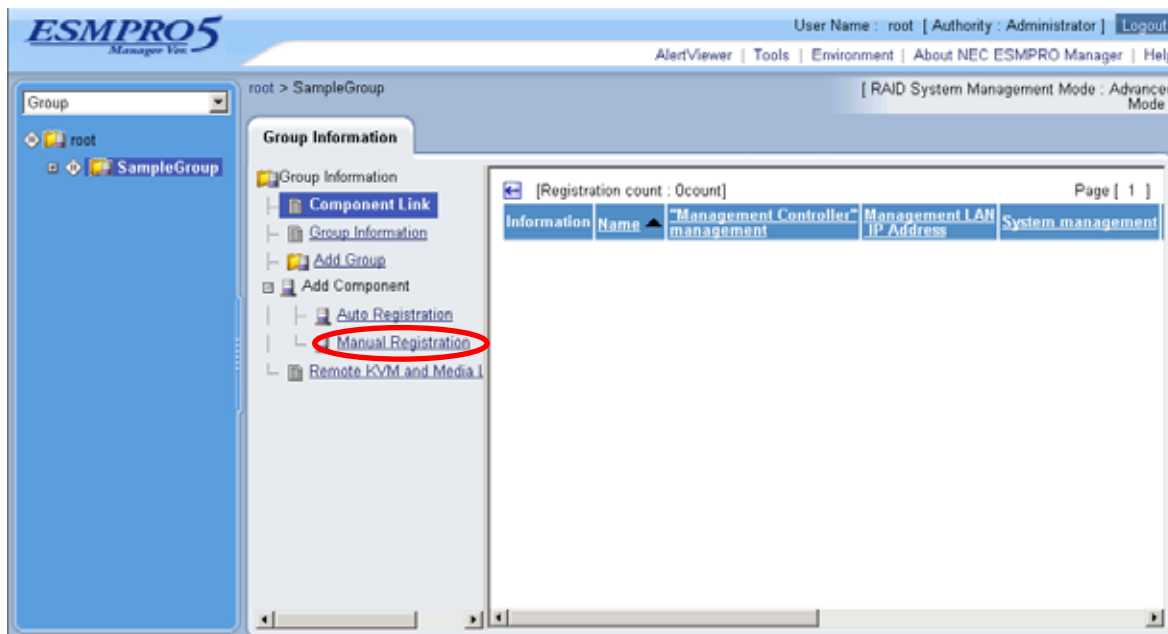
This method automatically searches the network for managed components that are not registered yet on the NEC ESMPRO Manager, and registers the managed components. This method is available only when LAN connection is used.

2.3.2.1 Manual Registration

(1) Click the managed component's "Group name".



(2) Click the "Manual Registration" from "Add Component" of "Group Information" tab.



(3) Input the following items:

--"Component Name"

Specify the name of the managed component on NEC ESMPRO Manager.

Assign a name different from other managed component names. Do not enter a name including blank characters. Uppercase characters are distinguished from lowercase characters.

--"Alias"

Specify the information about the managed component. Do not enter a name including blank characters. Uppercase characters are distinguished from lowercase characters.

--"Group"

Specify the group to which the managed component will belong.

"Common Setting"

--"OS IP Address"

Specify the OS IP Address of the managed component.

"System management"

--"Management"

Select "Registration" to manage the system of the component.

--"SNMP Community Name(Get)"

SNMP Community Name which is specified at SNMP Agent running on the managed component.

It is necessary to get the information, configure, monitor via SNMP

--"SNMP Community Name(Set)"

When you want to set SNMP Community names for Get and Set separately on the managed component, specify the SNMP Community name for Set in this field by alphanumeric characters.

If it is not specified, SNMP Community name for Get will be used.

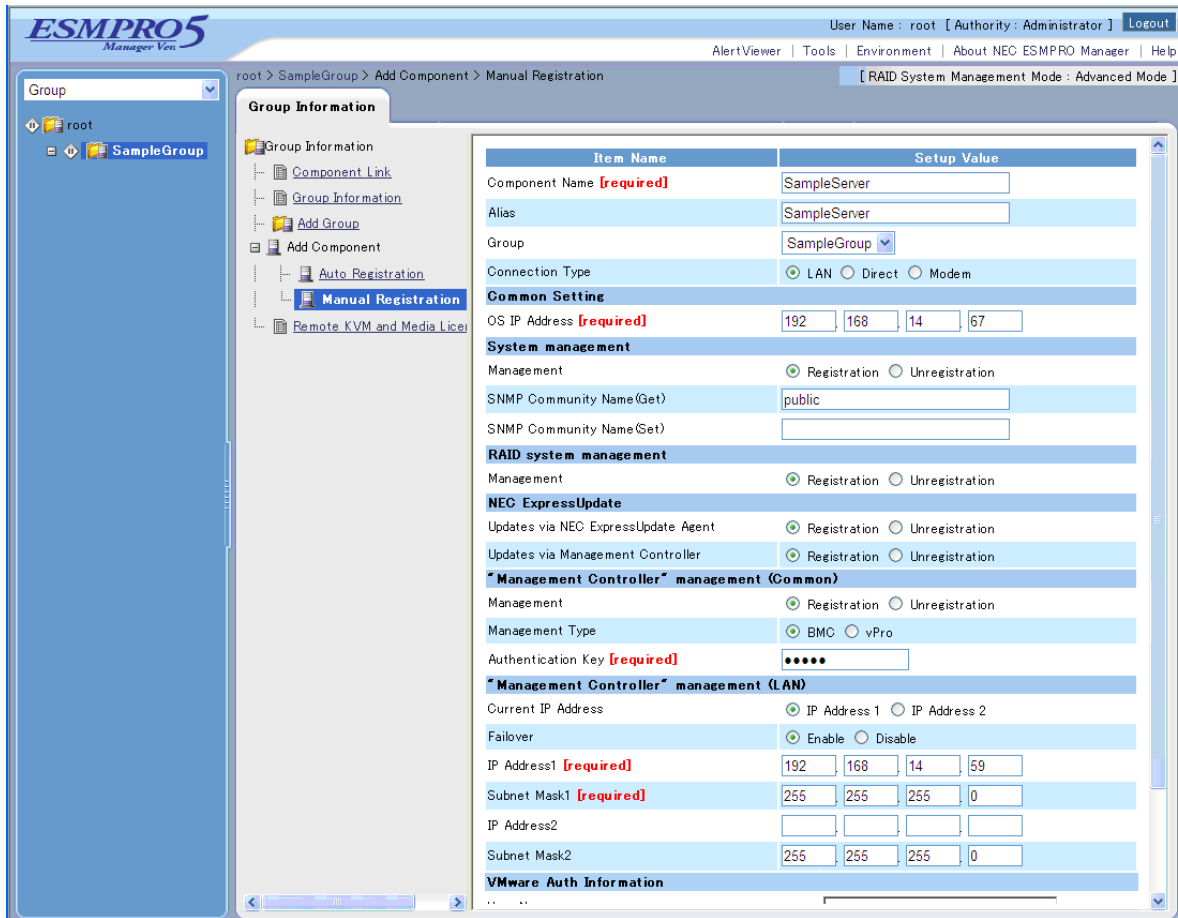
"RAID system management"

--"Management"

Select "Registration" to manage the RAID system of the component.

"NEC ExpressUpdate"
--"Updates via NEC ExpressUpdate Agent"
 Select "Registration" to manage the component using NEC ExpressUpdate.
--"Updates via Management Controller"
 Select "Registration" to manage the component using Management Controller.
"Management controller management (Common)"
--"Management"
 If NEC ESMPRO Manager managed the "Management controller" on the managed component,
 select "Registration".
--"Management Type"
 Select "BMC".
--"Authentication Key"
 Enter the "authentication key" that you set in the "BMC configuration information" of the managed
 component.
"Management controller management (LAN)"
--"Current IP Address"
 If you have set both "IP Address1" and "IP Address2", specify the IP address you want to use for
 connection.
--"Failover"
 "Failover" is a function to continue communication by changing to the other IP address if
 communication with the current IP address encounters an error. This setting is valid only when both
 "IP Address1" and "IP Address2" have been set.
 Determine whether to enable/disable the "Failover" function.
--"IP Address 1"
 Enter the IP address that is specified on LAN1 of the BMC configuration for the managed
 component.
--"Subnet Mask1"
 Enter the subnet mask that is specified on LAN1 of the BMC configuration for the managed
 component.
--"IP Address2"
 Enter the IP address that is specified on LAN2 of the BMC configuration for the managed
 component.
--"Subnet Mask2"
 Enter the subnet mask that is specified on LAN2 of the BMC configuration for the managed
 component.

The following screen shows an example.



(4) Click "Add".

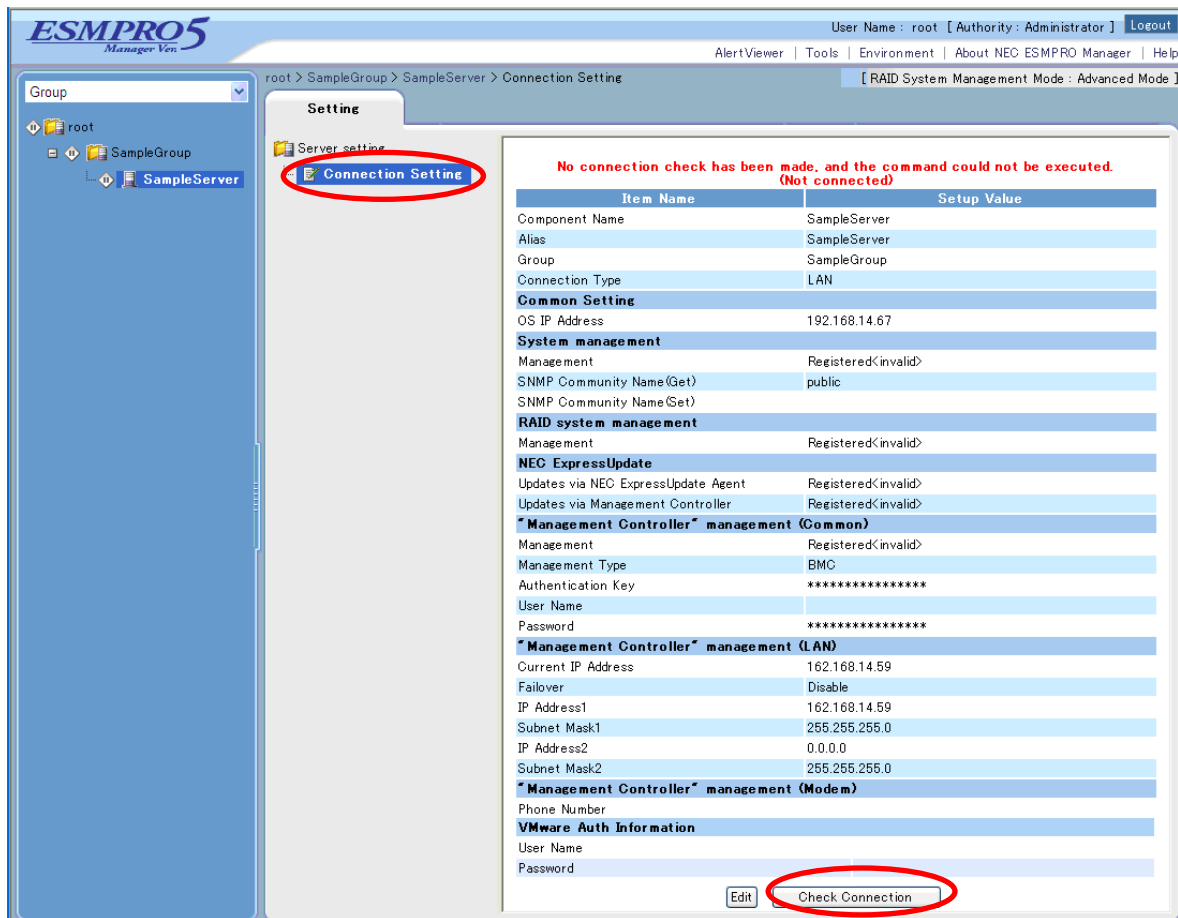
TIPS:

- A managed component cannot be controlled remotely by only registering it. Perform a "Check Connection".

- (5) Click "Connection Setting" from "Setting" tab of the managed component.
"Connection Setting" view is displayed.

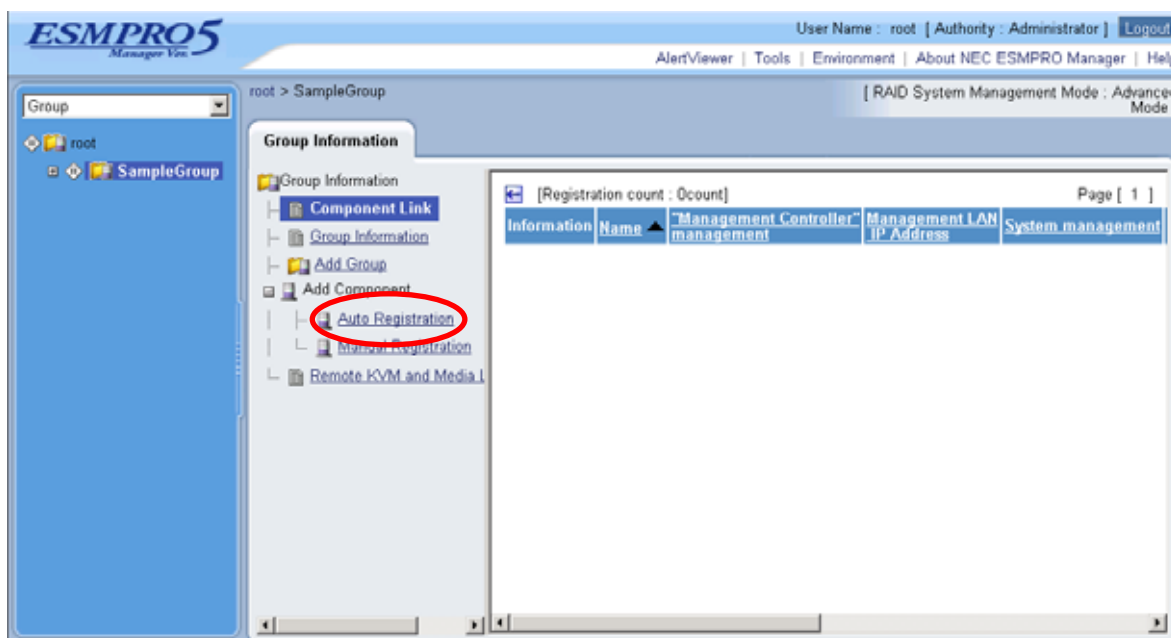
NEC ESMPRO Manager will execute "Check Connection" and collect the component information for the management.

When the "Check Connection" is completed, the NEC ESMPRO Manager starts to control the managed component.



2.3.2.2 Auto Registration

- (1) Click the managed component's "Group name" on the "Group" tree.
- (2) Click the "Auto Registration" from "Add Component" of "Group Information" tab.



(3) Input the following items:

--"Search Mode"

With "Network Address Search" selected, the NEC ESMPRO Manager searches for the managed components using the specified network address.

With "IP Address Range Search" selected, the NEC ESMPRO Manager searches for the managed components using the IP address range.

--"Network Address Search"

When you select "Network Address Search" for "Search Mode", specify the network address and network mask of the managed component to be searched for.

--"IP Address Range Search"

When you select "IP Address Range Search" for "Search Mode", specify the start IP address and end IP address of the range in which managed components are to be searched for.

"Common"

--"Registration Group"

Specify the group to which the managed component will belong.

"System management"

--"Search"

Select "Enable" to manage the system of the component.

"RAID system management"

--"Search"

Select "Enable" to manage the RAID system of the component.

"NEC ExpressUpdate"

--"Search"

Select "Enable" to manage the component using NEC ExpressUpdate.

"Management controller management"

--"Search"

Select "Enable" to manage the "Management controller" of the component.

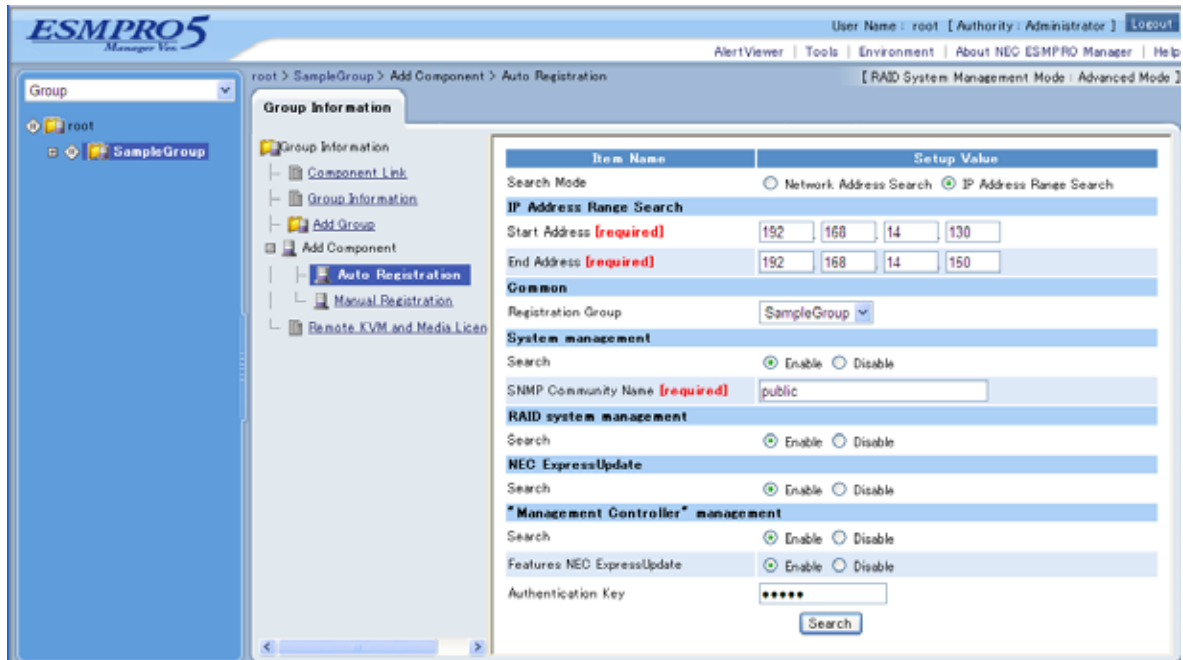
--"Features NEC ExpressUpdate"

Select "Enable" to feature NEC ExpressUpdate.

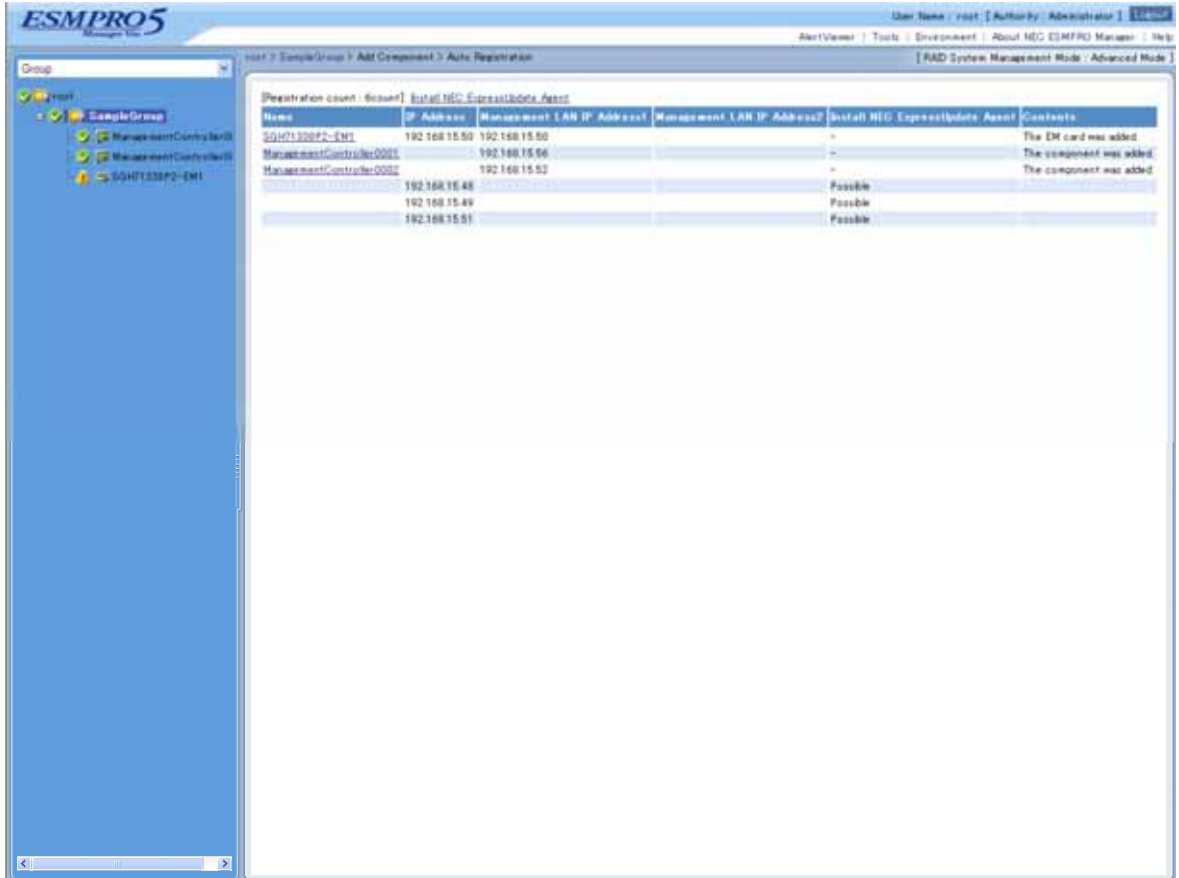
--"Authentication Key"

Enter the "authentication key" that you set in the "BMC configuration information" of the managed component.

Click "Search" and then the search for the managed components will start.
 The following screen is an example display with "IP Address Range Search" selected.



- (4) When the "Auto Registration" is completed, the NEC ESMPRO Manager starts to control the managed component.



TIPS:

- When the managed component is registered by auto registration, but the system management for the managed component cannot be registered, the "Component Name" of the managed component is set to the "Management Controller + number". You can change the component name on "Component setting" – "Connection Setting".

Chapter3 Setup for the Managed Component in which a BMC excluding EXPRESSSCOPE Engine 3 is integrated (for modem / direct connection)

This chapter explains the setup procedure for the NEC ESMPRO Manager to manage the BMC on a managed component remotely via modem / direct connection.

Case of direct connection is explained on the center.

3.1 Setup Flow (for modem/direct connection)

Perform the following setup procedure:

- (1) Connect the NEC ESMPRO Manager server and the managed component on the same on the network.
With direct connection, connect the NEC ESMPRO Manager server and the managed component directly with RS-232C cross cable. The serial port of the NEC ESMPRO Manager server NEC ESMPRO Manager is specified on the "Environment" screen of the NEC ESMPRO Manager.
- (2) Configure the BMC on the managed component.
- (3) Register the managed component on the NEC ESMPRO Manager.

3.2 Configure BMC on Managed Component (for modem/direct connection)

Configure BMC of the managed component at first.

TIPS:

- This section explains about the minimum setting that is necessary for connection the NEC ESMPRO Manager with the managed component. For details of BMC configuration, see document each tool.
-

There are two methods for configuring the BMC on a managed component for modem / direct connection.

■ **Configuration with NEC ESMPRO Agent Extension, NEC DianaScope Agent or "System Management" tool of NEC EXPRESSBUILDER CD-ROM**

This section explains the configuration procedure using the NEC ESMPRO Agent Extension for Windows.

CHECK:

- There are other BMC configuration tools, but do not use the following tools for setup with NEC ESMPRO Manager.
 - NEC MWA Agent
 - "System management" started from NEC EXPRESSBUILDER that does not contain NEC ESMPRO Manager.
-

■ **Configuration with NEC EXPRESSBUILDER DOS based with remote console feature.**

NEC EXPRESSBUILDER DOS based with remote console feature is to configure the BMC on the managed component when a keyboard is not connected. This method cannot use for modem connection.

CHECK:

- Configuration with NEC EXPRESSBUILDER DOS based with remote console feature can be available only from the NEC EXPRESSBUILDER that contains NEC ESMPRO Manager.
 - See the user's guide provided with the managed component about NEC EXPRESSBUILDER DOS based with remote console feature.
If there is the description about NEC EXPRESSBUILDER DOS based with remote console feature, the feature is available.
-

3.2.1 Configuration with NEC ESMPRO Agent Extension (for modem/direct connection)

This section explains the configuration procedure using the NEC ESMPRO Agent Extension for Windows.

- (1) After booting Windows on the managed component, click Windows "start" and start the BMC configuration function of NEC ESMPRO Agent Extension.

- (2) The main dialog box will be appeared.
Click "New". When a confirmation message is displayed, click "OK".

- (3) "BMC Configuration" dialog box will be display. Confirm "Common"
Click "Common" tab page.

Be sure to set the below item. The other items can be used with the default values.

- "Computer Name"
Enter a unique name for each managed component.
- "Authentication Key"

- (4) Select "WAN/Direct" tab page for LAN port 1 of the BMC.
Be sure to set the below items. The other items can be used with the default values.

- "Serial Port Mode"
Select "Direct" for direct connection.
Select "WAN (modem)" for modem connection.
- "Flow Control"
Select "RTS/CTS"

- (5) Click "Register".
The configuration information will be set in the BMC.

3.2.2 Configuration with NEC EXPRESSBUILDER DOS based with remote console feature (for modem/direct connection)

NEC EXPRESSBUILDER DOS based with remote console feature can configure the BMC on the managed component with the configuration information FD containing the configuration information. This section explains for direct connection.

CHECK:

- Configuration with NEC EXPRESSBUILDER DOS based with remote console feature can be available only from the NEC EXPRESSBUILDER that contains NEC ESMPRO Manager.
 - See the user's guide provided with the managed component about NEC EXPRESSBUILDER DOS based with remote console feature.
If there is the description about NEC EXPRESSBUILDER DOS based with remote console feature, the feature is available.
-

Perform the following procedure:

- (1) Creates a configuration information file
- (2) Run NEC EXPRESSBUILDER DOS based with remote console feature

3.2.2.1 Creates a configuration information file

- (1) Start the NEC ESMPRO BMC configuration installed on any PC to create the configuration information file.
- (2) Click "New". The confirming message will be displayed. Click "OK".
- (3) The "BMC Configuration" dialog box will appear.
Click "Common" tab page.

Be sure to set the below item. The other items can be used with the default values.

- "Computer Name"
Enter a unique name for each managed component.
- "Authentication Key"
-- Set "Remote Control (WAN/Direct)" and "Redirection (WAN/Direct)" to enable.

- (4) Select "WAN/Direct" tab page.

Be sure to set the below items. The other items can be used with the default values.

- "Serial Port Mode"
Select "Direct" for direct connection.
Select "WAN (modem)" for modem connection.
- "Flow Control"
Select "RTS/CTS"

- (5) Insert a formatted floppy disk into the FD drive, and click "OK". A dialog box will appear for specifying a location where the configuration information is to be saved.
- (6) Specify the floppy disk's root directory as the location.
Enter "CSL_LESS.CFG" for the file name, and click "OK".

The configuration information file will be saved on the floppy disk. This floppy disk is called a "configuration information FD".

CHECK:

- Place the configuration information FD in the write-enable state
-

3.2.2.2 Run NEC EXPRESSBUILDER DOS based with remote console feature

- (1) Configure the BMC of the managed component with the configuration information.

Insert the NEC EXPRESSBUILDER CD-ROM into the CD-ROM drive and the "configuration information FD" into the FD drive on the managed component. And then turn on the component.

After NEC EXPRESSBUILDER DOS based with remote console feature is started and the configuration information is loaded from the FD into the managed component, the Operating System will be rebooted.

TIPS:

- If the setting in the configuration information file is already configured, the managed component will be not rebooted.
 - When the console-less function for direct connection is used, the BIOS settings are changed as follows:
 - Serial Port Address: On Board COM B
 - Baud Rate: 19.2kbps
 - Flow Control: RTS/CTS for the managed server supporting SOL
No Flow for the managed server not supporting SOL
 - Terminal Type (Console Type) : PC-ANSITo check whether that the managed server supports SOL, see "Appendix C. Managed Components Summary"
 - The managed component is still opened the main menu of the NEC EXPRESSBUILDER after executing the feature.
After registering the managed component on the NEC ESMPRO Manager and confirm the remote console for the managed component, remove the NEC EXPRESSBUILDER from the CD-ROM drive if you need.
-

3.3 Register the managed component on NEC ESMPRO Manager (for modem/direct connection)

Register the managed component on the NEC ESMPRO Manager, perform the "Check Connection".
Login to the NEC ESMPRO Manager and perform the following:

- (1) Add the group to which the managed component will belong.
- (2) Register a managed component.

3.3.1 Add Group to which the managed component will belong

See 2.3.1 "Add Group to which the managed component will belong".

3.3.2 Register the Managed Component (for modem/direct connection)

- (1) Click the managed component's "Group name" on the "Group" tree.
- (2) Click "Manual Registration" of "Add Component" on the "Group Information" tab.
- (3) Input the following items:
 - "Component Name"
Specify the managed component name on the NEC ESMPRO Manager.
 - "Connection Type"
Select "Direct" for direct connection. Select "WAN (modem)" for modem connection.
 - "Authentication Key"
Enter the authentication key to be set on the BMC configuration of the managed component.

.....
TIPS:

- For details of other items, see the NEC ESMPRO Manager online help.
.....

- (4) Click "Add".

.....
TIPS:

- A managed component cannot be controlled remotely by only registering it.
.....

- (5) Click "Connection Setting" from "Setting" tab and click "Connection".
- (6) Click "Check Connection".

NEC ESMPRO Manager will communicate with the BMC of the managed component to check the connection. The NEC ESMPRO Manager will also collect the component information for the management.

When the "Check Connection" is completed, the NEC ESMPRO Manager starts to control the managed component.

.....
CHECK:

- After the operation for the managed component is finished, click "Disconnect" on the "Connection Setting".
.....

Chapter4 EM Card and Chassis Management

4.1 Overview

The NEC ESMPRO Manager has following functions by communication with the EM card in a blade enclosure,

■ Information Collection

NEC ESMPRO Manager collects the status and the information of the blade enclosure as follows.

-- Blade / EM Card / Switch Module List

If the slot state of CPU blade, EM card or switch module is changed, NEC ESMPRO Manager collects current slot state.

-- Chassis Information

NEC ESMPRO Manager collects the blade enclosure name, the name and ID of the rack in which the blade enclosure is installed.

-- EM Card / Switch Module Status

NEC ESMPRO Manager obtains the STATUS Lamp of the EM card and the switch module.

■ Component Monitoring

NEC ESMPRO Manager always monitors the slot state in the blade enclosure and the STATUS Lamp of the EM card and the Switch Module. When some slot state change or failure occurs, NEC ESMPRO Manager notifies the operator.

■ CPU Blade Auto Setting

When NEC ESMPRO Manager detects new CPU blade installed on the blade enclosure, the NEC ESMPRO Manager configures BMC on the CPU blade (managed component) through the EM card to control the managed component remotely. NEC ESMPRO Manager also registers the managed component for its own, and execute the "Check Connection".

4.2 System Requirements

NEC ESMPRO Manager can manage the following EM card.

■ Hardware

EM card that is listed "Appendix C. Managed Components Summary".

● Communication Medium

TCP/IP network

.....
CHECK:

- NEC ESMPRO Agent Extension and NEC DianaScope Agent cannot be installed on EM card.
-

4.3 Setup for EM Card

4.3.1 Setup Flow

Perform the following setup procedure:

- (1) Connect the NEC ESMPRO Manager server and the EM card.
- (2) Setup EM card for communication with NEC ESMPRO Manager.
- (3) Register the EM card on NEC ESMPRO Manager.

4.3.2 Setup EM Card for communication with NEC ESMPRO Manager Setup the EM Card as follows. See Users Guide that attached to EM Card for detail.

- (1) Set the IP address of the EM Card.

CHECK:

- The IP address set on the EM card should be the value that can be divided by 4. If the IP address be set other value, NEC ESMPRO Manager will fail "Check Connection".
 - NEC ESMPRO Manager communicates to the EM card with the "fixed IP address".
-

- (2) Setup EM Card for communication with NEC ESMPRO Manager.
Use setdsl command for SIGMABLADE-M.
Use SET DSGPASSWORD and SET DSGSTATE command for SIGMABLADE-H.

4.3.3 Register EM Card on NEC ESMPRO Manager

You can register the EM card with similar way of registering the ordinary managed component. Use either of the two methods to register EM card.

■ Manual Registration

This method requires the operator to directly enter the EM card's information such as the IP address and to perform "Check Connection".

■ Auto Registration

This method automatically searches the network for managed components and EM card that are not registered yet on the NEC ESMPRO Manager, and registers them.

TIPS:

- NEC ESMPRO Manager distinguishes the EM card from ordinary managed component by "Check Connection".
 - After "Check Connection" of the EM card is completed, Information of the blade enclosure (chassis) is displayed on the "Chassis List" on the NEC ESMPRO Manager.
 - The chassis name on the NEC ESMPRO Manager is set to the first 16 characters of the blade enclosure name. If the same name is already registered, some number is added to the name.
You can change the chassis name on "Chassis Information".
-

(1) Manual Registration

(1)-(a) Click the group name for the EM card on the "Component Link" view or "Group" tree.

(1)-(b) Click the "Manual Registration" from "Add Component" of "Group Information" tab.

(1)-(c) Input the following items on the "Manual Registration" view.

- "Component Name"
Specify the EM card name on the NEC ESMPRO Manager.
- "Common Setting"
 - "OS IP Address"
Enter the Fixed IP address of the EM card.
- "System management"
 - "Management"
Select the "Registration".
 - "SNMP community name"
Enter the "SNMP community name" specified on EM card.
- RAID system management
 - "Management"
Select "Unregistration".
- NEC ExpressUpdate
 - "Updates via NEC ExpressUpdate Agent"
Select "Unregistration".
 - "Updates via Management Controller"
Select "Unregistration".
- "Management controller management (Common)"
 - "Management"
Select the "Registration".
 - "Management Type"
Select "BMC".
 - "Authentication Key"
Enter the "NEC ESMPRO Manager (former NEC DianaScope) user password" that is set on the EM card.
- "Management controller management (LAN)"
 - "IP Address 1"
Enter the Fixed IP address and subnet mask of the EM card.

(1)-(d) Click "Add".

(1)-(e) Click "Connection Setting" from "Setting" tab of the managed component. And Click "Check Connection".
NEC ESMPRO Manager will execute "Check Connection" and collect the information for the management.
When the "Check Connection" is completed, the NEC ESMPRO Manager starts to control the EM card.

(2) Auto Registration

(2)-(a) Click the group name for the EM card on the "Component Link" view or "Group" tree.

(2)-(b) Click the "Auto Registration" from "Add Component" of "Group Information" tab.

(2)-(c) Select "Search Mode" on the "Auto Registration" view.

With "Network Address Search", enter the network address and network mask.

With "IP Address Range Search", enter the "start address" and "end address" of the IP address range.

In both search mode case, "SNMP Community Name" and "Authentication key" must be specified. "SNMP Community Name" is the "SNMP Community Name" specified on EM card.

"Authentication key" is the "NEC ESMPRO Manager (former NEC DianaScope) user password".

After that, click "Search".

(2)-(d) The search for the managed components will start.

(2)-(e) The IP addresses of the found managed component and EM cards will be listed.

When the "Auto Registration" is completed, the NEC ESMPRO Manager starts to control the EM card.

TIPS:

- When the EM card is registered by auto registration, the EM card name is set to blade enclosure + "-EM" + EM card number. You can change the EM card name on "Setting" tab – "Connection Setting".
-

4.4 Operation of EM card

You can open the screen to check the STATUS lamp and to turn UID lamp on as follows.

(1) Click "Chassis" from the tree view.

(2) Click the EM card name on the "Component List".

(3) Click the EM card parts on the "Chassis MAP" screen.

4.5 CPU Blade Auto Registration

NEC ESMPRO Manager monitors blade slot state of the blade enclosure on which the EM card is installed. If NEC ESMPRO Manager detects new CPU blade installed on the chassis, NEC ESMPRO Manager configures BMC on the CPU blade (managed component) through the EM card. To control the managed component, NEC ESMPRO Manager also registers the managed component and executes "Check Connection".

You should set the item for the BMC configuration and component registration on the NEC ESMPRO Manager on the "Chassis Properties" – "CPU Blade Auto Setting".

See the online help of the NEC ESMPRO Manager for the details of the items.

Chapter5 Setup for the NEC Storage M Series

5.1 Register NEC Storage on NEC ESMPRO Manager

You can register the NEC Storage with similar way of registering the ordinary managed component. Use either of the two methods to register NEC Storage.

■ **Manual Registration**

This method requires the operator to directly enter the NEC Storage's information such as the "Floating IP Address" and to perform "Check Connection".

■ **Auto Registration**

This method automatically searches the network for managed components and NEC Storage, and registers them.

TIPS:

- NEC ESMPRO Manager distinguishes the NEC Storage from ordinary managed component by "Check Connection".
 - The managed component name on the NEC ESMPRO Manager is set to the disk array name that is set in iSMClient. You can change the managed component name on "Connection Setting".
-

(1)

(2) Manual Registration

(2)-(a) Click the group name for the NEC Storage on the "Component Link" view or "Group" tree.

(2)-(b) Click the "Manual Registration" from "Add Component" of "Group Information" tab.

(2)-(c) Input the following items on the "Manual Registration" view.

- "Component Name"
Specify the NEC Storage name on the NEC ESMPRO Manager.
- "IP Address"
Enter the Fixed IP address of "Floating IP Address" of the NEC Storage.
- "System management"
- "Management"
Select the "Registration".
- "SNMP community name"
Enter the "SNMP community name" specified on iSMClient.
- "RAID system management"
- "Management"
Select the "Unregistration"
- "NEC ExpressUpdate "
- "Updates via NEC ExpressUpdate Agent"
Select the "Unregistration"
- "Updates via Management Controller"
Select the "Unregistration"
- "Management controller management (Common)"
- "Management"
Select the "Unregister".

(2)-(d) Click "Add".

(2)-(e) Click "Connection Setting" from "Setting" tab of the managed component. And Click "Check Connection".

NEC ESMPRO Manager will execute "Check Connection" and collect the information for the management.

When the "Check Connection" is completed, the NEC ESMPRO Manager starts to control the **NEC Storage**.

(3) Auto Registration

(3)-(a) Click the group name for the NEC Storage on the "Component Link" view or "Group" tree.

(3)-(b) Click the "Auto Registration" from "Add Component" of "Group Information" tab.

(3)-(c) Select "Search Mode" on the "Auto Registration" view.

With "Network Address Search", enter the network address and network mask of "Floating IP Address" of the NEC Storage.

With "IP Address Range Search", enter the "start address" and "end address" of the IP address range.

Please include the "Floating IP Address" of the NEC Storage within IP Address range.

In both search mode case, "SNMP Community Name" must be specified. "SNMP Community Name" is the "SNMP Community Name" specified on iSMClient.

After that, click "Search".

Select the "Disable" about "RAID system management", "NEC ExpressUpdate" and "Management controller management (Common)".

(3)-(d) The search for the managed components will start.

(3)-(e) The IP addresses of the found managed component and NEC Storages will be listed.

When the "Auto Registration" is completed, the NEC ESMPRO Manager starts to control the NEC Storage.

TIPS:

- Refer to the "NEC Storage Software Manual Guide" (IS901) for the overview of NEC Storage and the related manuals.
-

Chapter6 Setup for the Managed Component based on vPro

6.1 Setup Flow

Setup by the following setup procedures:

- (1) Connect the management PC on which NEC ESMPRO Manager is installed and the managed component based on vPro on the same network.
- (2) Configure iAMT on the managed component based on vPro.
- (3) Register the managed component based on vPro on NEC ESMPRO Manager.

6.2 Configure iAMT on the Managed Component

Turn the managed component on.

Press <Ctrl+P> immediately after the component based on vPro displays the message prompting you to press the key.

Main menu of the iAMT configuration is displayed.

Please enter the password to configure the iAMT.

TIPS:

- The NEC ESMPRO Manager can manage the vPro including the iAMT firmware version 6.0 and later.
- The default password is "admin".
- The iAMT configuration method may depend on the iAMT firmware version. Refer to the website for detail configuration information and configure iAMT. The following is an example of the website. Please note that this URL is subject to change without notice.

<http://software.intel.com/en-us/articles/intel-active-management-technology-intel-amt-software-development-kit-sdk-start-here-guide/>

"Performing Manual Setup (from Release 6.0)" or "Manually Configuring an Intel AMT 7.0" of "AMT7.0 Start Here Guide"

6.3 Register the managed component on NEC ESMPRO Manager

6.3.1 Add Group to which the managed component will belong

See 1.3.1 "Add Group to which the managed component will belong".

6.3.2 Register the Managed Component

Use either of following two methods to register the managed component.

■ **Manual Registration**

This method requires the operator to directly enter the managed component's information such as the IP address of the vPro and to perform "Check Connection".

■ **Auto Registration**

This method automatically searches the network for managed components that are not registered yet on the NEC ESMPRO Manager and registers them.

(1) Manual Registration

(1)-(a) Click the group name to which the managed component based on vPro will belong on the "Component List" or the "Group" tree.

(1)-(b) Click the "Manual Registration" from "Add Component" of "Group Information" tab.

(1)-(c) Input the following items.

--"Component Name"

Specify the name of the managed component on NEC ESMPRO Manager.

Assign a name different from other managed component names. Do not enter a name including blank characters. Uppercase characters are distinguished from lowercase characters.

--"Common Setting"

- "OS IP Address"

Specify the OS IP Address of the managed component.

--"System management"

- "Management"

Select "Registration" to manage the component using "System management".

--"RAID system management"

- "Management"

Select "Registration" to manage the RAID system of the component.

--"NEC ExpressUpdate"

- "Updates via NEC ExpressUpdate Agent"

Select "Registration" to manage the component using NEC ExpressUpdate.

--"Management controller management (Common)"

- "Management"

Select "Registration".

- "Management Type"

Select "vPro".

- "User Name"

Enter the user name for communication with the vPro.

- "Password"

Enter the password for communication with the vPro.

--"Management controller management (LAN)"

- "IP Address 1"

Enter the IP address that is specified on LAN of the iAMT configuration for the managed component.

.....
CHECK:

- This IP Address and OS IP Address are the same if you set the DHCP mode to "ENABLED" on the iAMT configuration.
-

- "Subnet Mask1"

Enter the subnet mask that is specified on LAN of the iAMT configuration for the managed component.

(1)-(d) Click "Add".

(1)-(e) Click the "Connection Setting" from "Setting" tab of the managed component.

Click "Check Connection" to collect the managed component information for the management.

When the "Check Connection" is completed, the NEC ESMPRO Manager starts to control the managed component.

(2) Auto Registration

(2)-(a) Click the group name to which the managed component based on vPro will belong on the "Component List" or the "Group" tree.

(2)-(b) Click the "Auto Registration" from "Add Component" of the "Group Information" tab.

(2)-(c) Input the following items to search managed components based on vPro:

-- "Search Mode"

With "Network Address Search", enter the network address and network mask.

With "IP Address Range Search", enter the "start address" and "end address" of the IP address range.

-- "System management"

- "Search"

Select "Enable" to manage the system of the component.

-- "RAID system management"

- "Search"

Select "Enable" to manage the RAID system of the component.

-- "NEC ExpressUpdate"

- "Search"

Select "Enable" to manage the component using NEC ExpressUpdate.

-- "Management controller management"

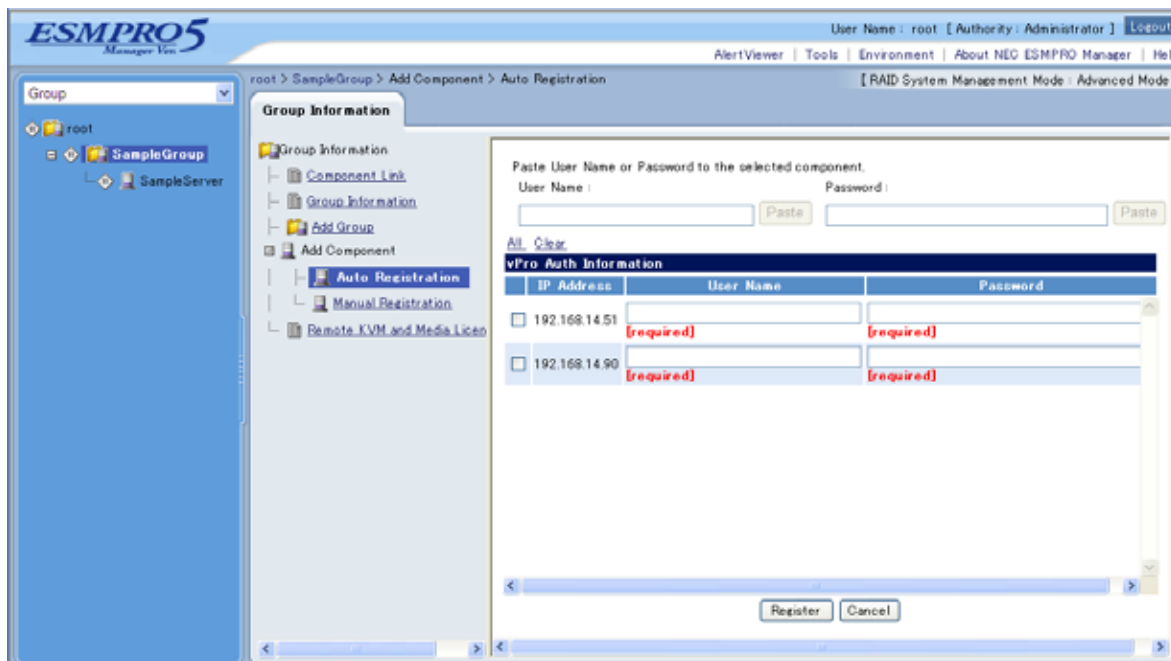
- "Search"

Select "Enable" to manage the "Management controller" of the component.

(2)-(d) Click "Search".

The search for managed components will start.

- (2)-(e) When managed components based on vPro are detected, the list of IP addresses is displayed. Enter user names and passwords for communication with vPro of these servers, and click "Register".



- (2)-(f) When the "Auto Registration" is completed, the list of the registered component is displayed. And then NEC ESMPRO Manager starts to manage components based on vPro.

Chapter7 Setup for the VMware ESXi5 server

7.1 Setup Flow

Setup by the following setup procedures:

- (1) Connect the management PC on which NEC ESMPRO Manager is installed and the VMware ESXi5 server as a managed component on the same network.
- (2) Configure BMC on the VMware ESXi5 server if you want to manage the management controller.
- (3) Register the VMware ESXi5 server as a managed component on NEC ESMPRO Manager.

7.2 Configure BMC on the Managed Component

Configure BMC on the VMware ESXi5 server if you want to manage the management controller.

In case that the VMware ESXi5 server in which EXPRESSSCOPE ENGINE3 is integrated:

See 01.2Configure BMC on Managed Component.

In case that the VMware ESXi5 server in which a BMC excluding EXPRESSSCOPE ENGINE3 is integrated:

See 2.2Configure BMC on Managed Component (for LAN connection).

.....
TIPS:

- To check the BMC type of the managed component, see Appendix C. Managed Components Summary.
-

7.3 Register the managed component on NEC ESMPRO Manager

7.3.1 Set the Environment

Set the “VMware Communication” to “ Allowed” on “Communication” view of “Environment”.

7.3.2 Add Group which the managed component will belong

See 1.3.1Add Group to which the managed component will belong.

7.3.3 Register the Managed Component

Use either of following two methods to register the managed component.

■ **Manual Registration**

This method requires the operator to directly enter the VMware ESXi5 server’s information such as the IP address.

■ **Auto Registration**

This method automatically searches the network for VMware ESXi5 servers and managed components that are not registered yet on the NEC ESMPRO Manager and registers them.

(1) Manual Registration

(1)-(a) Click the group name to which the VMware ESXi5 server will belong.

(1)-(b) Click the “Manual Registration” from “Add Component” of “Group Information” tab.

(1)-(c) Input the following items.

- “Component Name”
Specify the name of the managed component on NEC ESMPRO Manager.
Assign a name different from other managed component names. Do not enter a name including blank characters. Uppercase characters are distinguished from lowercase characters.
- “Common Setting”
 - “OS IP Address”
Specify the OS IP Address of the managed component.
- System management
 - “Management”
Select “Registration”.
- RAID system management
 - “Management”
Select “Registration” to manage the RAID system of the component.
- NEC ExpressUpdate
 - “Updates via NEC ExpressUpdate Agent”
This function cannot be executed for VMware ESXi5 servers. Select “Unregistration”.
 - “Updates via Management Controller”
Select “Registration” to manage the component using Management Controller.
- “Management controller” management (Common)
 - “Management”
If NEC ESMPRO Manager manages BMC on the managed component, select “Registration”.
 - “Authentication Key”
Enter the “authentication key” that you set in the “BMC configuration information” of the managed component.
- “Management controller” management (LAN)
 - “IP Address 1”
Enter the IP address that is specified on LAN1 of the BMC configuration for the managed component.
 - “Subnet Mask1”
Enter the subnet mask that is specified on LAN1 of the BMC configuration for the managed component.
- VMware Auth Information
 - “User Name”
Enter the user account name with the administrator capabilities on the VMware ESXi5 server.
 - “Password”
Enter the password for the user account with the administrator capabilities on the VMware ESXi5 server.

(1)-(d) Click “Add”.

(1)-(e) Click the “Connection Setting” from “Setting” tab of the managed component.
.Click “Check Connection” to collect the VMware ESXi5 server information for the management

When the “Check Connection” is completed, the NEC ESM PRO Manager starts to control the VMware ESXi5 server

(2) Auto Registration

(2)-(a) Click the group name to which the VMware ESXi5 server will belong.

(2)-(b) Click the “Auto Registration” from “Add Component” of the “Group Information” tab.

(2)-(c) Input the following items to search VMware ESXi5 servers:

--“Search Mode”

With “Network Address Search”, enter the network address and network mask.

With “IP Address Range Search”, enter the “start address” and “end address” of the IP address range.

--“System management”

- “Search”

Select “Enable” to manage the system of the component.

--RAID system management

- “Search”

Select “Enable” to manage the RAID system of the component.

--NEC ExpressUpdate

- “Search”

This function cannot be executed for VMware ESXi5 servers. Select “Disable”.

--“Management controller” management

- “Search”

Select “Enable” to manage BMC of the component.

- “Features NEC ExpressUpdate”

Select “Enable” to feature NEC ExpressUpdate.

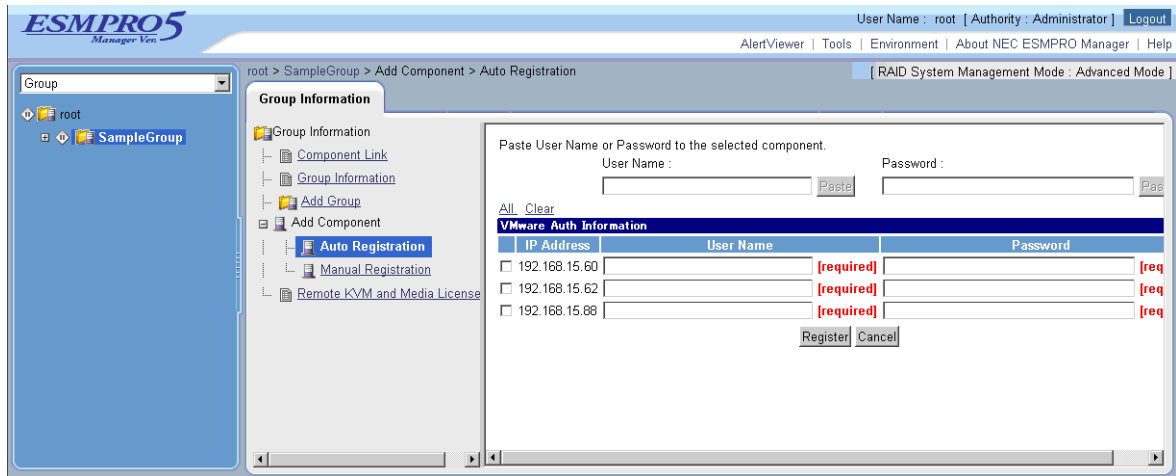
- “Authentication Key”

Enter the “authentication key” that you set in the “BMC configuration information” of the managed component.

(2)-(d) Click “Search”.

The search for managed components will start.

- (2)-(e) When VMware ESXi5 servers are detected, the list of IP addresses is displayed. Enter the user account with the administrator capabilities on these servers, and click “Register”.



- (2)-(f) The list of the registered component is displayed. And then NEC ESMPRO Manager starts to manage VMware ESXi5 servers.

Appendix A. How to setup for the managed component that does not has local console

Even if a managed component does not have local consoles like a keyboard, you can operate BIOS setup and DOS tools of the managed component using NEC ESMPRO Manager. Here procedure of the minimum in order to use the remote control for the managed component is shown.

1. Install NEC ESMPRO Manager and set the Environment.
2. Configure BMC on a managed component.
3. Register a managed component on NEC ESMPRO Manager.
4. Open the remote console.

1. Install NEC ESMPRO Manager and set the Environment.

- (1) Install NEC ESMPRO Manager on a management PC.
Refer to NEC ESMPRO Manager Ver.5 Installation Guide.
- (2) Confirm that you can login to the NEC ESMPRO Manager.
- (3) When you use LAN connection, connect the NEC ESMPRO Manager server and the managed component on the network.
- (4) When you use direct connection, connect a serial port of the NEC ESMPRO Manager server to serial port 2 of the managed component using RS232-C cross cable. Then, set the serial port of the NEC ESMPRO Manager server on OS.
- (5) Install NEC ESMPRO BMC Configuration on any PC.

2. Configure BMC on a managed component.

- (1) Configure BMC of the managed component.

When you use LAN connection, refer to 2.2.2"Configuration with NEC EXPRESSBUILDER DOS based with remote console feature (for LAN connection)".

When you use direct connection, refer to 3.2.2"Configuration with NEC EXPRESSBUILDER DOS based with remote console feature (for modem/direct connection)".

3. Register a managed component on NEC ESMPRO Manager.

- (1) After login to NEC ESMPRO Manager, register Add a new group that the managed component will belong.

Refer to 2.3.1"Add Group to which the managed component will belong".

- (2) Register the managed component.

For LAN connection, refer to 2.3.2.2"Auto Registration".

For direct connection, refer to 3.3.2"Register the Managed Component (for modem/direct connection)".

4. Open the remote console.

- (1) Select the managed component on NEC ESMPRO Manager and click remote console tab to open the remote console.

- (2) Select the managed component on NEC ESMPRO Manager and click remote control tab.

Reboot the managed component using some remote control command.

When the managed component is booted using NEC EXPRESSBUILDER CD-ROM, the main menu of NEC EXPRESSBUILDER will be displayed on the remote console of NEC ESMPRO Manager.

TIPS:

- If you use DOS based tool on the managed component, execute a remote control command with checking the check box of "Utility Boot" on remote control tab.
 - If the anything is not displayed on the remote console.
For LAN connection input ESC+{ key on the remote console.
For direct connection, click "Resume Redirection" and then input ESC+{ key on the remote console.
-

CHECK:

- After the operation to the managed component is finished, click "disconnect" on "Connection setting" to disconnect for direct connection.
-

Appendix B. How to setup for using NEC ESMPRO Agent Extension or NEC DianaScope Agent on the managed component that is set LAN teaming

Please setup NEC ESMPRO Manager with the procedure below using NEC ESMPRO Agent Extension, or NEC DianaScope Agent ver.2.00.00 and above.

The operation for NEC ESMPRO Agent Extension is explained.

How to setup is depended on the type of the managed component on which NEC ESMPRO Agent Extension has been installed.

- On the managed component that BMC uses standard LAN port.
- On the managed component that BMC uses Management LAN port.

Please see the appropriate explanation.

B.1 On the managed component that BMC uses standard LAN port

Refer to “NEC ESMPRO Manager Ver.5 Installation Guide” about the setting of LAN Teaming that is available for NEC ESMPRO Manager.

If OS on the managed component is Linux, how to setup the NEC ESMPRO Manager is not depended on LAN teaming.

If OS on the managed component is Windows, please setup the NEC ESMPRO Manager with the procedure below.

1. Invalidate BMC IP address synchronization function of NEC DianaScope Agent.
2. Set BMC configuration by using the NEC DianaScope Agent.
- 3 Select IP address for NEC DianaScope Agent.
4. Register the managed component on the NEC DianaScope Agent.

1. Invalidate BMC IP address synchronization function of the NEC DianaScope Agent.

- (1) Click “NEC DianaScope Agent” – “NEC DianaScope Agent” from the start menu on Windows.
- (2) Click “synchronization” on the dialog box of the NEC DianaScope Agent.
- (3) Set the BMC IP address synchronization to disable.

2. Set BMC configuration by using the NEC DianaScope Agent.

(1) See 2.2.1 "Configuration with NEC ESMPRO Agent Extension ver1.xx (for LAN connection)" and set BMC configuration information.

Note the followings:

- Set LAN1 IP address to same value of the teaming-set IP address.
- Even if the configuration of LAN2 for the BMC on the managed component is available, do not set LAN2 in the BMC configuration information. (If LAN2 IP address for BMC is already set, change it to "0.0.0.0".)

CHECK:

- Even if the BMC configuration has been already set, confirm the LAN1 IP address and register it again after invalidating BMC IP address synchronization function.
-

3 Select IP address for NEC DianaScope Agent.

(1) Select "Select IP address for Agent" on NEC DianaScope Agent.

(2) Enter the teaming address for LAN1.

4. Register the managed component on the NEC ESMPRO Manager.

(1) See 2.3 "Register a managed component on NEC ESMPRO Manager (for LAN connection)" and register the managed component.

CHECK:

- Confirm the IP address of the managed component even if the "Check Connection" for the managed component has been completed. If the IP address is different from the teaming-set IP address that is set in the procedure "2. Set BMC configuration through NEC DianaScope Agent", edit it and perform "Check Connection" again.
-

B.2 On the managed component that BMC uses Management LAN port

Please setup the NEC ESMPRO Manager with the procedure below. This procedure does not depend on OS of the managed component.

1. Set IP address that NEC ESMPRO Agent Extension uses on NEC ESMPRO Agent Extension.
2. Register the managed component on the NEC ESMPRO Manager.

1. Set IP address that NEC ESMRPO Agent Extension uses on NEC ESMPRO Agent Extension.

- (1) Click “Set Agent IP address” of NEC ESMPRO Agent Extension and set the IP address that is used for Teaming on any LAN.

2. Register the managed component on the NEC ESMPRO Manager.

- (1) See 2.3”Register a managed component on NEC ESMPRO Manager (for LAN connection)” and register the managed component.

.....
CHECK:

- If the “Check Connection” for the managed component has been completed, perform “Check Connection” again after performing “Set IP address that NEC ESMPRO Agent Extension uses on NEC ESMPRO Agent Extension”.
-

Appendix C. Managed Components Summary

The NEC ESMPRO Manager has following functions for BMC conforming to management components.

- Remote console
- Information collection
- Power control
- Component monitoring
- Remote batch
- Operation through the command line

Some available functions are dependent on the product type of the managed component. See the following managed component list.

The notes and restrictions of each component product are also explained in the user’s guide provided with the managed component. See the user’s guide.

<Explanation of the managed components list>

Product Name:	Indicates the name of the product that NEC ESMPRO Manager can control.	
BMC:	“Standard”:	means that the managed component pre-contains BMC.
	“Standard (RMC)”:	means that the managed component pre-contains Remote Management Card [N8115-01CP01] or the function which is equal to Remote Management Card.
	“Standard (A-RMC)”:	means that the managed component pre-contains Advanced Remote Management Card [N8115-02CP01] or the function which is equal to Advanced Remote Management Card.
	“Standard (F-RMC)”:	means that the managed component pre-contains ft Remote Management Card [N8815-001/001A]. ft Remote Management Card has the function which is equal to Advanced Remote management Card.
	“Standard (EE)”:	means that the managed component pre-contains EXPRESSSCOPE Engine or EXPRESSSCOPE Engine 2.
	“Standard (EE3)”:	means that the managed component pre-contains EXPRESSSCOPE Engine 3.
	“RMC”:	means that NEC ESMPRO Manager can control the managed component when the managed component contains Remote Management Card [N8115-01CP0].
	“A-RMC”:	means that NEC ESMPRO Manager can control the managed component when the managed component contains Advanced Remote Management Card [N8115-02CP01].
	“F-RMC”:	means that NEC ESMPRO Manager can control the managed component when the managed component contains ft Remote Management Card [N8815-001/001A]. ft Remote Management Card has the function which is equal to Advanced Remote management Card.
Standard LAN2:	“Supported” means that BMC and system BIOS on the managed component can communicate the NEC ESMPRO Manager via standard LAN port 2. (Advanced Remote Management Card, the function which is equal to Advanced Remote Management Card or EXPRESSSCOPE Engine series uses a dedicated LAN port, not use standard LAN port on the managed component.)	
Management LAN Port:	“Use” means that BMC on the managed component uses a Management LAN Port. “-” means that BMC on the managed component uses a standard LAN Port.	

NEC ESMPRO Manager Setup Guide

Remote Console:	“Supported” means that the managed component supports the Remote Console function.
Scheduled Running:	“Supported” means that the managed component supports the scheduled running function.
Power option setting:	“Supported” means that the managed component supports the “Power Restore Delay” function.
SOL:	“Supported” means that the managed component supports the SOL (Serial over LAN. A kind of the system actualizing remote console function.)
force network-boot:	“Supported” means that the managed component supports the “force network-boot” function, by which NEC ESMPRO Manager can indicate the managed component to force a network boot regardless of the boot order in Bios Setup menu. * It can operator the command line interface of NEC ESMPRO Manager.
Electric Power Management	“Supported” means that the managed component supports the “Electric Power Management” function.
ECO Setting	“Supported” means that the managed component supports the “ECO Setting” function.
Notes:	Refer the note number of the section “Notes for Each Managed Component”.

■ Express5800/100 series (Tower/Rack Server)

Product name	BMC	Standard LAN2	Management LAN Port	Remote Console	Schedule running	Power option setting	SOL	Electric Power Management	ECO Setting	force network boot	Notes
110Ej	RMC	supported	-	supported	supported	supported	supported	-	-	supported	
110Ek	Standard (EE)	-	use	supported	supported	supported	supported	-	-	supported	2-(b),2-(k)
110Rh-1	Standard (EE)	-	use	supported	supported	supported	supported	-	-	supported	2-(k)
110Ri-1	Standard (EE)	-	use	supported	supported	supported	supported	-	-	supported	2-(k)
120Eh	Standard (EE)	-	use	supported	supported	supported	supported	-	-	supported	2-(b),2-(k)
120Ei	Standard (EE)	-	use	supported	supported	supported	supported	-	-	supported	2-(b),2-(k)
120Lf	standard	-	-	supported	-	-	-	-	-	-	2-(g)
120Lg	standard	-	-	supported	-	-	supported	-	-	-	2-(g)
120Lh	RMC	supported	-	supported	supported	supported	supported	-	-	supported	2-(b)
	A-RMC	-	use	supported	supported	supported	supported	-	-	supported	2-(b)
120Li	Standard (EE)	-	use	supported	supported	supported	supported	-	-	supported	2-(b),2-(k)
120Lj	Standard (EE)	-	use	supported	supported	supported	supported	supported	-	supported	2-(b),2-(k)
120Me	standard	-	-	supported	-	-	-	-	-	-	2-(g)
120Mf	standard	-	-	supported	-	-	supported	-	-	-	

NEC ESM PRO Manager Setup Guide

Product name	BMC	Standard LAN2	Management LAN Port	Remote Console	Schedule running	Power option setting	SOL	Electric Power Management	ECO Setting	force network boot	Notes
120Rb-1	standard	-	-	supported	-	-	-	-	-	-	1-(a),1-(e),2-(g),3-(b),3-(c)
120Rc-1	standard	-	-	supported	-	-	supported	-	-	-	1-(c),1-(d),2-(a),3-(d)
120Rd-1	standard	-	-	supported	-	-	supported	-	-	-	1-(c),1-(d),2-(a),3-(d)
120Rd-2	standard	-	-	supported	-	-	-	-	-	-	1-(a),1-(e),2-(g),3-(b),3-(c)
120Re-1	RMC	supported	-	supported	supported	supported	supported	-	-	supported	
	A-RMC	-	use	supported	supported	supported	supported	-	-	supported	
120Re-2	standard	-	-	supported	-	-	supported	-	-	-	2-(a),3-(d)
120Rf-1	Standard (RMC)	supported	-	supported	supported	supported	supported	-	-	supported	
	A-RMC	-	use	supported	supported	supported	supported	-	-	supported	
120Rf-2	standard	-	-	supported	-	-	supported	-	-	-	2-(a),3-(d)
120Rg-1	Standard (EE)	-	use	supported	supported	supported	supported	supported	-	supported	2-(k)
120Rg-2	RMC	supported	-	supported	supported	supported	supported	-	-	supported	
	A-RMC	-	use	supported	supported	supported	supported	-	-	supported	
120Rh-1	Standard (EE)	-	use	supported	supported	supported	supported	supported	-	supported	2-(k)
120Rh-2	Standard (RMC)	supported	-	supported	supported	supported	supported	-	-	supported	
	A-RMC	-	use	supported	supported	supported	supported	-	-	supported	
120Ri-2	Standard (EE)	-	use	supported	supported	supported	supported	supported	-	supported	2-(k)
120Rj-2	Standard (EE)	-	use	supported	supported	supported	supported	supported	-	supported	2-(k)

NEC ESMPRO Manager Setup Guide

Product name	BMC	Standard LAN2	Management LAN Port	Remote Console	Schedule running	Power option setting	SOL	Electric Power Management	ECO Setting	force network boot	Notes
140Hc	standard	-	-	supported	-	-	-	-	-	-	2-(g)
140Hd	standard	-	-	supported	-	-	supported	-	-	-	2-(g)
140He	Standard (A-RMC)	-	use	supported	supported	supported	supported	-	-	supported	1-(g),2-(c)
140Hf	Standard (A-RMC)	-	use	supported	supported	supported	supported	-	-	supported	1-(g),2-(c)
140Rb-4	standard	-	-	supported	-	-	-	-	-	-	2-(g)
140Rc-4	standard	-	-	supported	-	-	supported	-	-	-	2-(g)
140Rd-4	Standard (A-RMC)	-	use	supported	supported	supported	supported	-	-	supported	1-(g),2-(c)
140Re-4	Standard (A-RMC)	-	use	supported	supported	supported	supported	-	-	supported	1-(g),2-(c)
140Rf-4	Standard (EE)	-	use	supported	supported	supported	supported	-	-	supported	2-(k)

NEC ESMPRO Manager Setup Guide

Product name	BMC	Standard LAN2	Management LAN Port	Remote Console	Schedule running	Power option setting	SOL	Electric Power Management	ECO Setting	force network boot	Notes
GT110d	Standard (EE3)	-	use	supported	supported	supported	supported	supported	supported	supported	1-(a),1-(b),2-(b)
GT110e	Standard (EE3)	-	use	supported	supported	supported	supported	supported	supported	supported	1-(a),1-(b),2-(b)
GT110d-S	Standard (EE3)	-	use	supported	supported	supported	supported	supported	supported	supported	1-(a),1-(b),2-(b)
GT110e-S	Standard (EE3)	-	use	supported	supported	supported	supported	supported	supported	supported	1-(a),1-(b),2-(b)
R110a-1	Standard (EE)	-	use	supported	supported	supported	supported	-	-	supported	2-(k)
R110b-1	Standard (EE)	-	use	supported	supported	supported	supported	-	-	supported	2-(k)
R110d-1E	Standard (EE3)	-	use	supported	supported	supported	supported	supported	supported	supported	1-(a),1-(b)
R110e-1E	Standard (EE3)	-	use	supported	supported	supported	supported	supported	supported	supported	1-(a),1-(b)
R110f-1E	Standard (EE3)	-	use	supported	supported	supported	supported	supported	supported	supported	1-(a),1-(b)
R120a-1	Standard (EE)	-	use	supported	supported	supported	supported	supported	supported	supported	2-(k)
R120a-2	Standard (EE)	-	use	supported	supported	supported	supported	supported	supported	supported	2-(k)
R120b-1	Standard (EE)	-	use	supported	supported	supported	supported	supported	supported	supported	2-(k)
R120b-2	Standard (EE)	-	use	supported	supported	supported	supported	supported	supported	supported	2-(k)

NEC ESMPRO Manager Setup Guide

Product name	BMC	Standard LAN2	Management LAN Port	Remote Console	Schedule running	Power option setting	SOL	Electric Power Management	ECO Setting	force network boot	Notes
R120d-1E	Standard (EE3)	-	use	supported	supported	supported	supported	supported	supported	supported	1-(a),1-(b)
R120d-2E	Standard (EE3)	-	use	supported	supported	supported	supported	supported	supported	supported	1-(a),1-(b)
R120d-1M	Standard (EE3)	-	use	supported	supported	supported	supported	supported	supported	supported	1-(a),1-(b)
R120d-2M	Standard (EE3)	-	use	supported	supported	supported	supported	supported	supported	supported	1-(a),1-(b)
R120e-1E	Standard (EE3)	-	use	supported	supported	supported	supported	supported	supported	supported	1-(a),1-(b)
R120e-2E	Standard (EE3)	-	use	supported	supported	supported	supported	supported	supported	supported	1-(a),1-(b)
R120e-1M	Standard (EE3)	-	use	supported	supported	supported	supported	supported	supported	supported	1-(a),1-(b)
R120e-2M	Standard (EE3)	-	use	supported	supported	supported	supported	supported	supported	supported	1-(a),1-(b)
R140a-4	Standard (EE)	-	use	supported	supported	supported	supported	-	-	supported	2-(k)
R140b-4	Standard (EE)	-	use	supported	supported	supported	supported	-	-	supported	2-(k)

NEC ESMPRO Manager Setup Guide

Product name	BMC	Standard LAN2	Management LAN Port	Remote Console	Schedule running	Power option setting	SOL	Electric Power Management	ECO Setting	force network boot	Notes
T110b	Standard (EE)	-	use	supported	supported	supported	supported	supported	supported	supported	2-(k)
T110e-M	Standard (EE3)	-	use	supported	supported	supported	supported	supported	supported	supported	1-(a),1-(b),2-(b)
T110f-E	Standard (EE3)	-	use	supported	supported	supported	supported	supported	supported	supported	1-(a),1-(b),2-(b)
T110f-S	Standard (EE3)	-	use	supported	supported	supported	supported	supported	supported	supported	1-(a),1-(b),2-(b)
T120a-E	Standard (EE)	-	use	supported	supported	supported	supported	-	-	supported	2-(k)
T120a-M	Standard (EE)	-	use	supported	supported	supported	supported	supported	supported	supported	2-(k)
T120b-M	Standard (EE)	-	use	supported	supported	supported	supported	supported	supported	supported	2-(k)
T120d	Standard (EE3)	-	use	supported	supported	supported	supported	supported	supported	supported	1-(a),1-(b),2-(b)
T120e	Standard (EE3)	-	use	supported	supported	supported	supported	supported	supported	supported	1-(a),1-(b),2-(b)

■ Express5800/Blade Server

Product name	BMC	Standard LAN2	Management LAN Port	Remote Console	Schedule running	Power option setting	SOL	Electric Power Management	ECO Setting	force network boot	Notes
120Ba-4	Standard (RMC)	supported	-	supported	supported	supported	supported	-	-	supported	2-(h), 2-(i), 2-(l)
120Bb-6	Standard (EE)	-	use	supported	supported	supported	supported	-	-	supported	2-(k), 3-(f)
120Bb-d6	Standard (EE)	-	use	supported	supported	supported	supported	-	-	supported	2-(k), 3-(f)
120Bb-m6	Standard (EE)	-	use	supported	supported	supported	supported	-	-	supported	2-(k), 3-(f)
140Ba-10	Standard (EE)	-	use	supported	supported	supported	supported	-	-	supported	2-(k), 3-(f)
420La	standard	-	-	supported	-	-	-	-	-	-	1-(a),2-(g),2-(h) , 2-(l)
420Ma	standard	-	-	supported	-	-	supported	-	-	-	2-(h) , 2-(l)
B110d	Standard (EE3)	-	use	supported	supported	supported	supported	supported	-	supported	1-(a), 1-(b), 3-(g)
B120a	Standard (EE)	-	use	supported	supported	supported	supported	supported	-	supported	2-(k), 3-(f)
B120a-d	Standard (EE)	-	use	supported	supported	supported	supported	supported	-	supported	2-(k), 3-(f)
B120b	Standard (EE)	-	use	supported	supported	supported	supported	supported	-	supported	2-(k), 3-(f)
B120b-d	Standard (EE)	-	use	supported	supported	supported	supported	supported	-	supported	2-(k), 3-(f)
B120b-h	Standard (EE)	-	use	supported	supported	supported	supported	supported	-	supported	2-(k), 3-(f)
B120d	Standard (EE3)	-	use	supported	supported	supported	supported	supported	-	supported	1-(a), 1-(b), 3-(g)
B120d	Standard (EE3)	-	use	supported	supported	supported	supported	supported	-	supported	1-(a), 1-(b), 3-(g)
B120d-h	Standard (EE3)	-	use	supported	supported	supported	supported	supported	-	supported	1-(a), 1-(b), 3-(g)

NEC ESM PRO Manager Setup Guide

Product name	BMC	Standard LAN2	Management LAN Port	Remote Console	Schedule running	Power option setting	SOL	Electric Power Management	ECO Setting	force network boot	Notes
B120e-h	Standard (EE3)	-	use	supported	supported	supported	supported	supported	-	supported	1-(a), 1-(b), 3-(g)
B140a-T	Standard (EE)	-	use	supported	supported	supported	supported	-	-	supported	2-(k), 3-(f)
Intelligent L2 Switch [N8406-005]	Standard (A-RMC)	-	use	-	-	supported	-	-	-	-	1-(a),1-(b),1-(g),2-(c), 2-(d),2-(e),2-(f), 2-(h) , 2-(l)
Intelligent L2 Switch [N8406-006]	Standard (A-RMC)	-	use	-	-	supported	-	-	-	-	1-(a),1-(b),1-(g),2-(c), 2-(d),2-(e),2-(f)

■ Express5800/iModel (Data Center Server)

Product name	BMC	Standard LAN2	Management LAN Port	Remote Console	Schedule running	Power option setting	SOL	Electric Power Management	ECO Setting	force network boot	Notes
i110Rh-1	Standard (EE)	-	use	supported	supported	supported	supported	-	-	supported	2-(k)
i120Ra-e1	Standard (EE)	-	use	supported	supported	supported	supported	-	-	supported	2-(k)
iR110a-1h	Standard (EE)	-	use	supported	supported	supported	supported	-	supported	supported	2-(k)
iR120a-1E	Standard (EE)	-	use	supported	supported	supported	supported	supported	supported	supported	2-(b),2-(k)

■ Express5800/ECO CENTER (Energy Efficient Server)

Product name	BMC	Standard LAN2	Management LAN Port	Remote Console	Schedule running	Power option setting	SOL	Electric Power Management	ECO Setting	force network boot	Notes
E110b-M	Standard (EE)	-	use	supported	supported	supported	supported	supported	-	supported	2-(k)
E110d-1	Standard (EE3)	-	use	supported	supported	supported	supported	supported	supported	supported	1-(a),1-(b)
E120a	Standard	-	use	supported	supported	-	supported	supported	-	-	1-(a),1-(b),2-(m),2-(n)
E120b-1	Standard (EE)	-	use	supported	supported	supported	supported	-	-	supported	2-(k)
E120b-M	Standard	-	use	supported	supported	-	supported	supported	-	-	1-(a),1-(b),2-(m),2-(n)
E120d-1	Standard (EE3)	-	use	supported	supported	supported	supported	supported	supported	supported	1-(a),1-(b)
E120d-M	Standard (EE3)	-	use	supported	supported	supported	supported	supported	supported	supported	1-(a),1-(b)
E120e-M	Standard (EE3)	-	use	supported	supported	supported	supported	supported	supported	supported	1-(a),1-(b)

■ **Fault tolerant server**

Product name	BMC	Standard LAN2	Management LAN Port	Remote Console	Scheduled running	Power option setting	SOL	Electric Power Management	ECO Setting	force network boot	Notes
R320c-E4	Standard (EE3)	-	use	supported	supported	supported	supported	supported	supported	supported	1-(a),1-(b)
R320c-M4	Standard (EE3)	-	use	supported	supported	supported	supported	supported	supported	supported	1-(a),1-(b)
R320d-E4	Standard (EE3)	-	use	supported	supported	supported	supported	supported	supported	supported	1-(a),1-(b)
R320d-M4	Standard (EE3)	-	use	supported	supported	supported	supported	supported	supported	supported	1-(a),1-(b)

■ **Express5800/Scalable HA Server (Expandable Enterprise Server)**

Product name	BMC	Standard LAN2	Management LAN Port	Remote Console	Scheduled running	Power option setting	SOL	Electric Power Management	ECO Setting	force network boot	Notes
A1080a-D	Standard	-	use	supported	supported	-	supported	supported	supported	-	1-(a),1-(b),2-(f),2-(o)
A1080a-E	Standard	-	use	supported	supported	-	supported	supported	supported	-	1-(a),1-(b),2-(f),2-(o)
A1080a-S	Standard	-	use	supported	supported	-	supported	supported	supported	-	1-(a),1-(b),2-(f),2-(o)
A1040b	Standard (EE3)	-	use	supported	supported	supported	supported	supported	supported	supported	1-(a),1-(b)
A2010b	Standard (EE3)	-	use	supported	supported	supported	supported	supported	supported	supported	1-(a),1-(b)
A2020b	Standard (EE3)	-	use	supported	supported	supported	supported	supported	supported	supported	1-(a),1-(b)
A2040b	Standard (EE3)	-	use	supported	supported	supported	supported	supported	supported	supported	1-(a),1-(b)

■ Express5800/The highly parallel computing server

Product name	BMC	Standard LAN2	Management LAN Port	Remote Console	Scheduled running	Power option setting	SOL	Electric Power Management	ECO Setting	force network boot	Notes
HR120a-1	Standard	-	use	supported	-	-	supported	supported	-	-	1-(a),1-(b),2-(e),2-(f),2-(g)
HR120b-1	Standard	-	use	supported	-	-	supported	supported	-	-	1-(a),1-(b),2-(e),2-(f),2-(g)

■ Express5800/MDServer

Product name	BMC	Standard LAN2	Management LAN Port	Remote Console	Scheduled running	Power option setting	SOL	Electric Power Management	ECO Setting	force network boot	Notes
MD120La-R	Standard (RMC)	supported	-	supported	supported	supported	supported	-	-	supported	
	A-RMC	-	use	supported	supported	supported	supported	-	-	supported	

■ NEC Storage NS Series

Product name	BMC	Standard LAN2	Management LAN Port	Remote Console	Scheduled running	Power option setting	SOL	Electric Power Management	ECO Setting	force network boot	Notes
NS400	standard	-	-	supported	-	-	-	-	-	-	1-(a),1-(e),2-(g),3-(b),3-(c)
NS410	standard	-	-	supported	-	-	-	-	-	-	1-(a),1-(e),2-(g),3-(b),3-(c)
NS420	standard	-	-	supported	-	-	supported	-	-	-	
NS430	standard	-	-	supported	-	-	supported	-	-	-	
NS600	standard	-	-	supported	-	-	-	-	-	-	2-(g)

<Notes for Each Managed Component>

This section explains the functional difference and notes of each managed component.

If note number for the managed component is displayed on the column "notes" of "Managed Components List", refer the notes of the note number.

1. About the connection type or the connection port.

- 1-(a) Remote management with modem connection is not supported for this product.
- 1-(b) Remote management with direct connection is not supported for this product.
- 1-(c) Modem connection with the NEC ESMPRO Manager is available with the serial port 2 on the rear panel of the managed component.
- 1-(d) Direct connection with the NEC ESMPRO Manager is available with the serial port 2 on the front panel or rear panel.
- 1-(e) Direct connection with the NEC ESMPRO Manager is available with the serial port 2 on the front panel.
- 1-(f) To enable remote management via direct connection, use the RS-232C cross cable that is specified on the users guide attached with the managed component.
- 1-(g) BMC on this managed component has the function that is equal to the Advanced Remote Management Card. The BMC has also a dedicated LAN port. NEC ESMPRO Manager operates as Advanced Remote Management Card is contained. And when you refer online help of NEC ESMPRO Manager for this managed component, please do not see the explanation about the managed component which contains standard BMC but about the managed component which contains the Advanced Remote Management Card.

2. About function

- 2-(a) This product may not be able to boot the remote FD correctly depending on the memory size required for the operating system or application.
- 2-(b) This product has no function to identify the chassis like UID lamp, however "Identify Chassis" command of the NEC ESMPRO Manager is executed successfully.
- 2-(c) BMC on this managed component has the function that is equal to the Advanced Remote Management Card. The BMC has also a dedicated LAN port. NEC ESMPRO Manager operates as Advanced Remote Management Card is contained. And when you refer online help of NEC ESMPRO Manager for this managed component, please do not see the explanation about the managed component which contains standard BMC but about the managed component which contains the Advanced Remote Management Card
- 2-(d) This product does not support remote console function.
- 2-(e) NEC ESMPRO Agent Extension or NEC DianaScope Agent cannot be installed on this product. Some functions of NEC ESMPRO Manager are not supported for the product if the functions need to communicate with NEC ESMPRO Agent Extension or NEC DianaScope Agent.
- 2-(f) BMC on this product cannot be configured using either NEC ESMPRO Agent Extension, NEC DianaScope Agent or NEC ESMPRO Manager PXE Service. Please refer to the user's guide that is attached in this product for BMC configuration.
- 2-(g) If NEC ESMPRO Manager server is on Linux, Remote Console function of NEC ESMPRO Manager can't communicate with this product. Remote Console is not supported for this product.
- 2-(h) Enclosure ID or slot ID of this product (Blade server) can't be obtained from NEC ESMPRO Manager.
- 2-(i) There are notes for the force network-boot function.
N-code of the managed component is [N8400-025F] or [N8400-026F] and the BIOS Revision is 6.1.0010 and below, please contact our local representative to acquire the fixed module.
- 2-(j) This product does not support power off, power cycle and reset from NEC ESMPRO Manager. However, power off and power cycle can be executed by NEC ESMPRO Manager command line interface in case of emergency.
- 2-(k) This product does not support to shutdown OS from NEC ESMPRO Manager with modem/direct connection.

- 2-(l) NEC ESMPRO Manager cannot display the blade enclosure (chassis) information for this product. The product does not support it.
- 2-(m) The power measurement for the server 1 reads a total of the server 1 and the server 2. The power measurement for the server 2 always reads 0.
- 2-(n) Please execute "check connection" for the managed component when BMC FW is updated on the managed component. If "check connection" is not executed, the remote console function may not run normally.
- 2-(o) If the managed component is Dual Server System, the power measurement for each server reads a total of the server 1 and the server 2.
- 2-(p) Power supply state display is partly different from module POWER lamp on the device. Only DC on (turn on green lamp) and DC off (turn off green lamp) correspond in NEC ESMPRO Manager.
- 2-(q) NEC ExpressUpdate Agent cannot be installed on this product. NEC ExpressUpdate of NEC ESMPRO Manager is not support for the product.

3. About the operation

- 3-(a) Only one NEC ESMPRO Manager can control this product.
- 3-(b) Serial Console Redirection and LAN Console Redirection cannot be used concurrently. To use LAN Console Redirection, disconnect the cable from the serial port 2 on the front panel, or set the configuration item "Redirection (WAN/Direct)" to "Disabled".
- 3-(c) If Linux has been installed on this product, be sure to set the BMC configuration item "Redirection (WAN/Direct)" to "Disabled". If it is enabled, Linux cannot be booted.
- 3-(d) To use the remote console function on this product, select "Advance" – "Memory Configuration" and set "Extended Memory Test" to "Disabled" on the BIOS Setup Utility screen.
- 3-(e) Following function cannot be used for this product in implementation:
 - CUI Remote console function
 - Remote drive function
 - Power control function
 - Scheduled running function
- 3-(f) Please do not change the delay time on the Power Restore Delay function for this product. This product is turned on after the waiting time ((slot number - 1) * 2sec). If the delay time is changed from 0 sec (the default value), the waiting time is not set correct value.
- 3-(g) NEC ESMPRO Manager does not change the power restore delay time for this product even if you order NEC ESMPRO manager to set the delay time. Because the waiting time ((slot number - 1) * 2sec) should be guaranteed before this product is turned on.

EM Card List

NEC ESMPRO Manager can get a blade enclosure information by communication with the following EM Card in the blade enclosure.

- EM Card [N8405-019A]
- EM Card [N8405-27]
- EM Card [N8405-043]

Power Bay

NEC ESMPRO Manager can manage the following Power Bay remotely.

- EcoPowerGateway [N8142-36F]

Component based on vPro

NEC ESMPRO Manager can manage the following Express5800/Workstation based on the vPro including the iAMT firmware version 6.0 and later.

- 51Mb
- 51Mb-S
- 51Ea
- 53Xg

Revision History

1.40	2013/03/18	(Ver.5.66) Corrects writing errors.
1.42	2013/04/16	Adds new model to the appendix C.
1.43	2013/06/03	Adds new model to the appendix C.
1.44	2013/06/12	(Ver.5.71) Adds new model to the appendix C. Corrects writing errors.
1.45	2013/06/20	Adds new model to the appendix C.
1.46	2013/09/05	Adds new model to the appendix C. Corrects writing errors.
1.47	2013/10/17	Adds new model to the appendix C.
1.48	2013/10/25	(Ver.5.73) Adds how to register the “Management Controller” management for a scalable HA server which has EXPRESSSCOPE Engine SP3(Dual BMC model). Adds new model to the appendix C.
1.49	2013/12/21	(Ver.5.74) Corrects writing errors.
1.50	2014/01/06	Adds Windows 8.1/Windows Server 2012 R2.
1.51	2014/02/06	Adds new model to the appendix C.