

Getting Started!



2nd Edition,
Aug 2018

Be sure to read this guide carefully before using this server and retain it for reference.

This document provides information required to use your server safely and properly. Keep this document nearby so that you may refer to it as necessary. Before using this server, be sure to read this guide and "User's Guide" (in the DVD provided with this server). For details of names in this document, refer to *Names and Functions of Parts* in the "User's Guide".

Safety precautions

Follow the instructions in this guide for the safe use of the NEC Express server. This guide describes dangerous parts of the server, possible hazards, and how to avoid them. Server components with possible danger are indicated with a warning label placed on or around them.

In this guide or on warning labels, WARNING or CAUTION is used to indicate a degree of danger. These terms are defined as follows:

	Warning	Indicates there is a risk of death or serious personal injury
	Caution	Indicates there is a risk of burns, other personal injury, or property damage

Precautions and notices against hazards are presented with one of the following three symbols. The individual symbols are defined as follows:

	Attention	This symbol indicates the presence of a hazard if the instruction is ignored. An image in the symbol illustrates the hazard type.	(Example) (Electric shock risk)	
	Prohibited Action	This symbol indicates prohibited actions. An image in the symbol illustrates a particular prohibited action.	(Example) (Do not disassemble)	
	Mandatory Action	This symbol indicates mandatory actions. An image in the symbol illustrates a mandatory action to avoid a particular hazard.	(Example) (Disconnect a plug)	

(A label example used in this document)

Symbols to draw attention	Description of a warning	Term indicating a degree of danger
	Use only the specified outlet	Caution
	Use a grounded outlet with the specified voltage. Use of an improper power source may cause a fire or a power leak.	

Symbols used in this document and on warning labels

Attentions

	Indicates the presence of electric shock hazards.		Indicates the presence of mechanical parts that can result in bodily injury.
	Indicates the presence of a hot surface or component. Touching this surface could result in bodily injury.		Indicates the presence of mechanical parts that can result in pinching or other bodily injury.
	Indicates there is a risk of explosion.		Indicates the presence of laser beam that cause blindness.
	Indicates there is a risk of fire or fumes.		Indicates a general notice or warning that cannot be specifically identified.

Prohibited actions

	Do not disassemble, repair, or modify the server. Otherwise, an electric shock or fire may be caused.		Do not touch the server with wet hand. Otherwise, an electric shock may be caused.
	Do not touch the component specified by this symbol. Otherwise, an electric shock or burn may be caused.		Do not use the server in the place where water or liquid may pour. Otherwise, an electric shock or fire may be caused.
	Do not place the server near the fire. Otherwise, a fire may be caused.		Indicates a general prohibited action that cannot be specifically identified.

Mandatory actions

	Unplug the power cord of the server. Otherwise, an electric shock or fire may be caused.		Indicates a mandatory action that cannot be specifically identified. Make sure to follow the instruction.
	Make sure equipment is properly grounded. Otherwise, an electric shock or fire may be caused.		

Safety notes

General

Warning

Do not use the server for services where human life may be at stake or high reliability is required.

This server is not intended for use in medical, nuclear, aerospace, mass transit or other applications where human life may be at stake or high reliability is required, nor is it intended for use in controlling such applications. We disclaim liability for any personal injury and property damages caused by such use of this server.

Do not use the server if any smoke, odor, or noise is present.

If smoke, odor, or noise is present, immediately turn off the server and disconnect the power plug from the outlet, then contact the store where you purchased the product or your maintenance service company. Using the server in such conditions may cause a fire.

Do not insert needles or metal objects.

Do not insert needles or metal objects into ventilation holes in the server or openings in the optical disk drive. Doing so may cause an electric shock.

Caution

Keep water or foreign matter away from the server.

Do not let any liquid such as water or foreign materials including pins or paper clips enter the server. Failure to follow this warning may cause an electric shock, a fire, or failure of the server. When such things accidentally enter the server, immediately turn off the power and disconnect the power plug from the outlet. Do not disassemble the server, and contact the store where you purchased the product or your sales representative.

Power supply and power cord use

Warning

Do not hold the power plug with a wet hand.

Do not disconnect/connect the plug while your hands are wet. Failure to follow this warning may cause an electric shock.

Do not connect the ground wire to a gas pipe.

Never connect the ground wire to a gas pipe. Failure to follow this warning may cause a gas explosion.

Caution

Plug in to a proper power source.

Use a grounded outlet and observe the specified voltage. Use of an improper power source may cause a fire or a power leak. Do not install the server where you need an extension cord. Use of a cord that does not meet the power specifications of the server may heat up the cord and cause a fire. If you want to use an AC cord set with a ground wire of class OI, be sure to connect the ground wire before inserting the power plug into the outlet. Before disconnecting the ground wire, be sure to disconnect the power plug from the outlet.

Do not connect many cords into a single outlet by using extension cords.

The electric current exceeding the rated flow overheats the outlet, which may cause a fire.

Do not pull out a cable by gripping the cable part.

Pull a cable straight out by gripping the connector part. Pulling a cable by gripping the cable part or applying extra pressure to the connector part may damage the cable part, which may cause a fire or electric shock.

Insert the power plug into the outlet as far as it goes.

Heat generation resulting from a halfway inserted power plug (imperfect contact) may cause a fire. Heat will also be generated if condensation is formed on dusty blades of the halfway inserted plug, increasing the possibility of fire.

Do not use any unauthorized interface cable.

Use only the interface cables provided with the server. Electric current that exceeds the amount allowed could cause fire. Also, observe the following precautions to prevent electrical shock or fire caused by a damaged power cord.

- Do not stretch the cord harness
- Do not bend the power cord
- Do not twist the power cord
- Do not step on the power cord
- Uncoil the power cord before use
- Do not secure the power cord with staples or equivalents
- Do not use a damaged power cord (replace the damaged power cord with a power cord of the same standard. For information on replacing the power cord, contact the store where you purchased the product or a maintenance service company)
- Do not pinch the power cord
- Keep chemicals away from the power cord
- Do not place any object on the power cord
- Do not alter, modify, or repair the power cord

Do not use the attached power cord for any other devices or usage.

The power cord that comes with your server is designed aiming to connect with this server and to use with the server, and its safety has been tested. Do not use the attached power cord for any other purpose. Doing so may cause a fire or an electric shock.

Safety precautions (continued)

Installation, relocation, storage, and connection

Caution

Do not attempt to lift the server by holding the front bezel.

Securely hold the server by the base to move or lift. Do not attempt to lift it by holding the front bezel. Doing so may cause the front bezel to come off, which may cause not only breakage of the server but also cause the server to fall on to persons resulting in personal injury.

Do not install the server in any place other than specified.

Do not install the server in the following places or any place other than specified in this guide. Failure to follow this instruction may cause a fire.

- A dusty place
- A humid place such as near a boiler
- A place exposed to direct sunlight
- An unstable place

Do not use the server in an environment where corrosive gas is present.

Do not install the server in a place subject to corrosive gases including sodium chloride, sulfur dioxide, hydrogen sulfide, nitrogen dioxide, chlorine, ammonia, or ozone. Do not install the server in an environment that contains dust, chemicals that accelerate corrosion such as NaCl or sulfur, or conductive materials. Failure to follow this warning may cause the wiring on the printed wiring board to short-circuit, leading to fire. If you have any questions, contact the store where you purchased the product or a sales representative.

Do not connect or disconnect any interface cable with the power cord of the server plugged to a power source.

Be sure to power off the server and unplug the power cord from a power outlet before installing/removing any optional internal device or connecting/disconnecting any interface cable to/from the server. If the server is off-powered but its power cord is plugged to a power source, touching an internal device, cable, or connector may cause an electric shock or a fire resulted from a short circuit.

Use only the specified interface cable.

Use only interface cables provided by NEC and locate a proper device and connector before connecting a cable. Using an authorized cable or connecting a cable to an improper destination may cause a short circuit, resulting in a fire. Also, observe the following notes on using and connecting an interface cable.

- Do not use any damaged cable connector.
- Do not use the server with loose cable connections.
- Do not use any damaged cable.
- Do not step on the cable.
- Do not place any object on the cable.

Cleaning and working with internal devices

Warning

Do not disassemble, repair, or alter the server.

Never attempt to disassemble, repair, or alter the server on any occasion except as described in this document. Failure to follow this warning may cause not only malfunction of the server but also an electric shock or fire.

Do not look into the optical disk drive

A laser beam used in the optical disk is harmful to the eyes. Do not look into or insert a mirror into the drive while the drive is powered on. If a laser beam (which is invisible) enters your eyes, you may lose your eyesight.

Do not attempt to remove lithium, NiMH, or Li-ion batteries.

The server contains the lithium, NiMH, or Li-ion battery (some optional devices have a lithium, NiMH, or Li-ion battery installed). Do not remove the battery. Placing a battery close to a fire or in the water may cause an explosion.

When the server does not operate appropriately due to the dead battery, contact the store you purchased the product or your maintenance service company. Do not attempt to disassemble the server to replace or recharge the battery by yourself.

Warning

Disconnect the power plug before cleaning the server.

Be sure to power off the server and disconnect the power plug from a power outlet before cleaning or installing/removing internal optional devices. Touching any internal device of the server with its power cord connected to a power source may cause an electric shock even of the server is off-powered. Occasionally disconnect the power plug from the outlet and clean the plug with a dry cloth. Heat will be generated if condensation is formed on a dusty plug, which may cause a fire.

Caution

High temperature

Components including internal hard disk drives in the server are extremely hot just after the server is turned off. Allow the surface to cool before installing/removing.

Secure cables or cards in place

Be sure to secure the power cord, interface cables, and cards in place. Incomplete installation causes a loose connection, resulting in smoke or fire.

During operation

Caution

Avoid contact with the server during thunderstorms.

Do not touch any part of the server including the cables when a thunderstorm is approaching. Also, do not connect or disconnect any devices. There may be a risk of electric shock from lightning strike.

Keep animals away from the server.

Keep animals such as pets away from the server. Pet hair or other waste enters the server, which may cause a fire or electric shock.

Do not place any object on top of servers.

Any weight on the server may cause the server to fall, resulting in personal injury or property damage.

Do not place any object that weighs 5 kg or more on top of horizontally mounted servers.

The maximum weight that can be placed on top of the server when it is horizontally mounted is 5 kg. Do not place any object weighing 5 kg or more on top of the server. Failure to observe this limit may deform the server, which could cause a failure.

Do not leave the optical disk drive tray open.

Dust may get in the server when the tray is open, which may result in a malfunction. In addition, bumping the open tray could cause personal injury.

Do not get yourself caught in the fan

Keep your hands and hair away from the cooling fan at the rear of the server during operation. Failure to observe this warning may cause your hands or hair to catch in the fan, resulting in personal injury.

Warning labels

Warning labels are attached to or near the components with potential dangers. Be sure to read and keep them. (Do not remove or black out this label). If no label is attached or printed on the server, or if there is a label coming off or stained, contact your sales representative.

Transfer, movement, and disposal

Observe the following precautions when you transfer (or sell) the server or software provided with the server to a third party.

- Server**
When transferring (or selling) the server to a third party, be sure to provide this manual (including electronic data) to the third party.

Be sure to completely delete all important data from Hard Disk Drive. (Even if you cannot see the data on OS, the data might remain in the HDD.) NEC is not responsible for any data leakages when transferring or selling the server to a third party.

- Provided software**
Observe the following precautions when transferring (selling) the provided software to a third party.
 - All provided software applications must be transferred and no backup copies must be retained.
 - Transfer requirements listed in the "Software License Agreement" that comes with each software application must be satisfied.
 - Software applications that are not approved for transfer must be uninstalled before transferring the server.
- Disposal of server and consumables**
Dispose of the server, accessories (such as power cord), HDD, DVD, option board, and battery according to laws and regulations of the central and/or local government. For details about how to discard (and replace) the battery installed in this product, contact your sales representative.

Regarding the transportation of this server

This server and/or some of the associated optional devices uses lithium metal batteries or lithium ion batteries. Regulations for air/ocean transportation apply when transporting lithium batteries. Conform to the regulations if you want to transport this server or optional devices by air or ship.

Tips for your health and safety

Using a computer extensively may affect different parts of your body. Here are tips you should follow while working on a computer to minimize strain on your body.

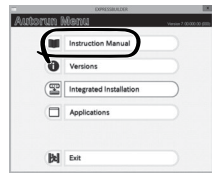
- Keep proper posture
- Adjust the angle, brightness, and contrast of the display to suit your preferences.
- Adjust the angle of keyboard
- Take a break. Light exercise is also recommended.

The following describes the procedures from opening the carton box to starting using this product. Be sure to follow these steps.

Instructions

"User's Guide" and "Installation Guide (Windows)" are included in EXPRESSBUILDER. These instructions are necessary for the server setup/installation. To refer to them, follow the steps below.

- Turn on a computer in which the appropriate Windows OS has been installed.
- Insert the provided EXPRESSBUILDER DVD in the computer turned on in step (1). Below menu is automatically displayed.
- Click **Instruction Manual** on the menu. Copy or print the displayed documents if necessary.



Step 1 Check the accessories.

Open the carton box, and then make sure you have all the accessories listed below:

- EXPRESSBUILDER x 1
- Power cord x 1
- Rubber foot x 4
- Screw set (502) x 1
- SDR Update CD-ROM x 1
- Getting Started (this guide) x 1
- Mouse x 1
- Keyboard x 1
- Bezel lock key x 2¹⁾
- Cable tie (for securing AC power cord)
- Cable tie (for Battery cable fixing) x 1

Important: Keep the accessories in a safe place.

*1: Provided with the server with a 2.5-inch HDD cage installed.

Step 2 Install internal optional devices.

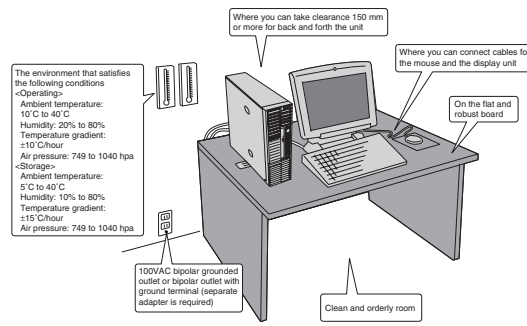
Install internal optional devices. (Go to Step 3 if you have not purchased options.)

Note: See *Installing Internal Optional Devices* in the "User's Guide" and the guide provided with the optional device.

Step 3 Place the product to a proper location.

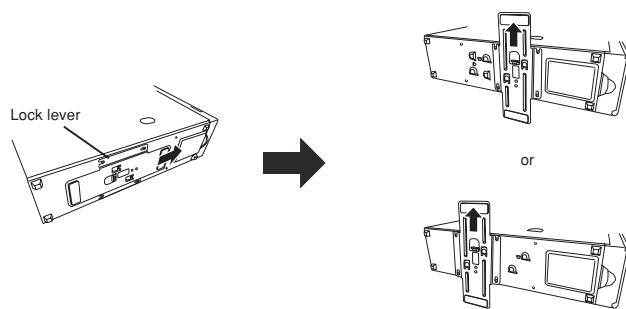
Determine the location to place this product. Set up a rack in an appropriate place, and then mount the server in the rack.

Note: See *Installation and Connection* in "User's Guide".



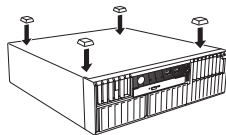
For vertical mounting

Release the lock lever, and then remove the stabilizers. Attach the removed stabilizers as shown in the figure below. For details, see *Preparation for installation* in "User's Guide".



For horizontal mounting

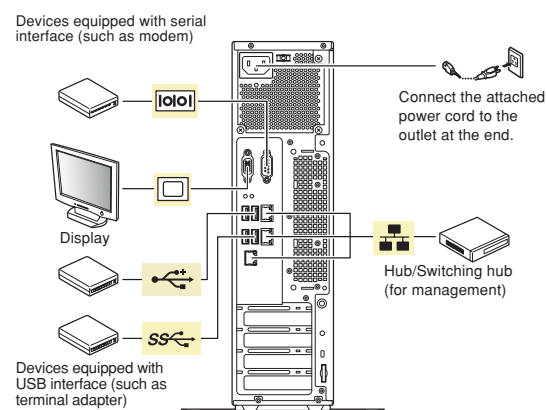
Attach the vent holes cover for cooling on the right side of the server, and then attach the provided rubber feet to the bottom of the server. For details, see *Preparation for installation* in "User's Guide".



Step 4 Connect cables.

Connect the provided cables to this product.

Note: See *Installation and Connection* in the "User's Guide".



Step 5 Turn on the server, and then set up the OS.

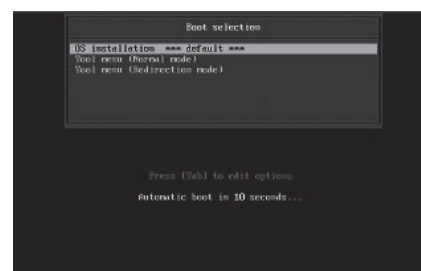
Turn on the server by pressing POWER switch on the front of the server.

Important: If an error message is displayed on the screen or beeps are heard repeatedly after turning on the server, make a note of the displayed message or the sound of the beeps, and contact your local maintenance service company.

- After turning on the display, press the POWER switch on the front of the server. The NEC logo will be displayed on the screen.
- Set up BIOS in accordance with the server configuration and the intended use of the system. If an optional uninterruptible power-supply system is connected to the server or management software is integrated in the server, change the system BIOS settings. Normally, it is not necessary to change the factory settings. To change the BIOS settings, press the F2 key immediately after turning on the server to start the BIOS setup utility (SETUP).

Note: See *System BIOS Setup* in the "User's Guide".

- If an OS has not been installed, or if the OS needs to be re-installed, install the OS by using EXPRESSBUILDER. Insert the EXPRESSBUILDER DVD in the disk drive of this server, and then restart the server by pressing **Ctrl + Alt + Delete**. EXPRESSBUILDER starts, and then the boot menu is displayed.



- Select **OS installation** from the boot menu. After a while, the Home menu is displayed.



- Select **Setup** from the menu.
- Perform OS setup following the instructions described in the "Installation Guide". See the "Installation Guide (Windows)".

Windows Service Packs

When applying a Windows Service Pack to this server, see *Service Pack Support* in the "Installation Guide (Windows)".

Step 6 Install the bundled software.

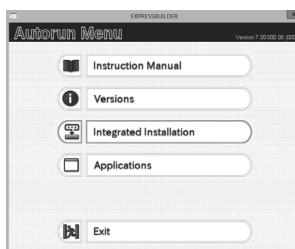
The following software is bundled with this server. Install the software as needed.

Tips: You can create PC for Management by using a general client computer. (You can also use this server as PC for Management.)

Name	Where to Install	Description
NEC ESMPRO Agent	Server	Monitors the server status.
NEC ESMPRO Agent Extension	Server	Remotely controls the server.
Express Report Service	Server	Informs the support center of the failure information.
Express Report Service (HTTPS)	Server	Informs the support center of the failure information.
NEC ExpressUpdate Agent	Server	Manages and updates the versions of firmware, software, and other products installed in the server.
Universal RAID Utility (URU)	Server	Manages and monitors the RAID controller.
Product Info Collection Utility	Server	Collects information for maintenance.
BMC Configuration	Server	Sets up BMC.
NEC ESMPRO Manager	PC for Management	Manages the server by integrating with NEC ESMPRO Agent or other products.
Express Report Service (MG)	PC for Management	Informs the support center of the failure information.

The above bundled software can be installed by using the autorun menu. Follow the procedure below:

- When installing the bundled software in the server, start Windows installed in the server. When installing the bundled software in PC for Management, start Windows installed in the target PC.
- Log on to Windows as a user with administrator privileges.
- Insert EXPRESSBUILDER DVD. The auto-run function starts, and the following menu is displayed.



- Click **Integrated Installation** or **Applications** on the menu.
- Select the bundled software to install.
- The bundled software installer starts. Install the software by referring to the description in the "Installation Guide" and other relevant documents.

Regulatory notices

FCC Statement

Note: This equipment has been tested and found to comply with the limits for a Class A digital device, pursuant to Part 15 of the FCC Rules. These limits are designed to provide reasonable protection against harmful interference when the equipment is operated in a commercial environment. This equipment generates, uses, and can radiate radio frequency energy and, if not installed and used in accordance with the instruction manual, may cause harmful interference to radio communications. Operation of this equipment in a residential area is likely to cause harmful interference in which case the user will be required to correct the interference at his own expense.

Industry Canada Class A Emission Compliance Statement/ Avis de conformité à la réglementation d'Industrie Canada:
CAN ICES-3(A)/NMB-3(A)

CE/Australia and New Zealand Statement

Warning: This is a Class A product. In domestic environment this product may cause radio interference in which case the user may be required to take adequate measures (EN55022).

BSMI Statement

警告使用者：
這是甲類的資訊產品，在居住的環境中使用時，可能會造成射頻干擾，在這種情況下，使用者會被要求採取某些適當的對策。

Disposing of your used product

In the European Union
EU-wide legislation as implemented in each Member State requires that used electrical and electronic products carrying the mark (left) must be disposed of separately from normal household waste. This includes Information and Communication Technology (ICT) equipment or electrical accessories, such as cables or DVDs. When disposing of used products, you should comply with applicable legislation or agreements you may have. The mark on the electrical and electronic products only applies to the current European Union Member States.

Outside the European Union
If you wish to dispose of used electrical and electronic products outside the European Union, please contact your local authority and ask for the correct method of disposal.

Turkish RoHS information relevant for Turkish market

EEE Yönetmeliğine Uygundur

CCC声明

声明
此为 A 级产品，在生活环境中，该产品可能会造成无线电干扰。在这种情况下，可能需要用户对其干扰采取切实可行的措施。

部件名称	有毒有害物质或元素					
	铅 (Pb)	汞 (Hg)	镉 (Cd)	六价铬 (Cr (VI))	多溴联苯 (PBB)	多溴二苯醚 (PBDE)
印刷线路板	×	○	○	○	○	○
HDD、DVD等	×	○	○	○	○	○
机箱、支架	○	○	○	○	○	○
电源	×	○	○	○	○	○
键盘	×	○	○	○	○	○
其他 (电缆、鼠标等)	×	○	○	○	○	○

○：表示该有毒有害物质在该部件所有均质材料中的含量均在SJ/T11363-2006标准规定的限量要求以下。
×：表示该有毒有害物质至少在该部件的某一均质材料中的含量超出SJ/T11363-2006标准规定的限量要求。
This only applies to China.

Vietnam RoHS information relevant for Vietnam market

Complying with "CIRCULAR, No.30/2011/TT-BCT (Hanoi, August 10 2011), Temporary regulations on content limit for certain hazardous substances in electrical products"



警告：
如果更換錯誤電池會產生爆炸請以相同或同型電池更換使用

廢電池請回收

Trademarks

Microsoft, Windows, and Windows Server are either registered trademarks or trademarks of Microsoft Corporation in the United States and other countries.

All other product, brand, or trade names used in this publication are the trademarks or registered trademarks of their respective trademark owners.

This guide uses recycled paper.

© NEC Corporation 2018
This document may not be copied or altered without the permission of NEC Corporation.