

Express5800/R120h-1M,R120h-2M, R120h-1E,R120h-2E,T120h Supplement of Installation Guide (Windows)

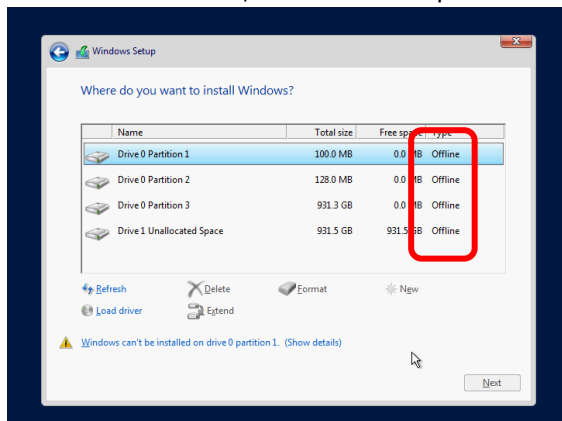
Thank you for purchasing our product.

When using the EXPRESSBUILDER E8.10-003.01 (3.10.222), see this supplement before installing Windows. Red lines indicate the changes of *Installation Guide (Windows)*.

Please read carefully the instructions and keep this document for your future reference.

Precautions for Manual installation

If the status of drives are "Offline" state in Windows installer by using "Manual installation" of EXPRESSBUILDER, follow the steps below to continue the installation.



Addition

[Procedure]

1. Click "X" on the upper right of "Windows Setup" wizard.
Cancel the setup, and then return to the start screen of "Windows Setup".
2. Click "X" on the upper right of the start screen of "Windows Setup" to restart.
3. Press the <F11> key during POST to start the Boot Menu.
4. From **One Time Boot** Menu, select the optical disk drive where the OS installation disc is inserted.
5. The system will start from the OS installation disc. The message "Press any key to boot from CD or DVD..." is displayed on the upper of screen. Press the <Enter> key to start the system from the installation disc.
6. Hereafter, proceed to the Windows OS installation according to the "Installation Guide (Windows)".

About RAID Controllers (N8103-189/190/191/192/193/194/195/201)

See the following changes to install the RAID controller driver.

RAID controllers	N8103-189/190/191/192/193/194/195/201
Case	Manual Installation by EXPRESSBUILDER
Locations	Installation Guide (Windows) "Manual Installation" - Windows Server 2016: 3.3.3 <i>Installation procedure</i> Steps 18, 19, 20 - Windows Server 2012 R2: 4.3.3 <i>Installation procedure</i> Steps 18, 19, 20

New * Underlines indicate the changes of guide.

18. The "Select Windows installation location" screen is displayed.

If the driver was loaded in steps 12 and 13, or **if the RAID controller is not in use**, proceed to step 21. If you select **Load driver** here, the following screen will be displayed.

↑ Addition
↓

Loading the driver
To install the device driver of the drive, insert the installation media that contains the driver file and click OK . Note: The installation media is a CD, DVD, or USB flash drive.
<div>Browse (B) OK Cancel</div>

19. After setting the Starter Pack DVD in the UBS-DVD drive, assign a file directory, and click **OK**.

- onboard RAID Controller

Express5800/R120h-1M, R120h-2M

<Starter Pack DVD>:¥software¥001¥drivers¥sw_raid1_driver

Express5800/R120h-1E, R120h-2E, T120h

<Starter Pack DVD>:¥software¥002¥drivers¥sw_raid1_driver

- RAID Controller (N8103-189/190/191/192/193/194/195/201)

Express5800/R120h-1M, R120h-2M

<Starter Pack DVD>:¥software¥001¥drivers¥dac1_driver

Express5800/R120h-1E, R120h-2E, T120h

<Starter Pack DVD>:¥software¥002¥drivers¥dac1_driver

↑ Addition
↓

20. Select the following driver from the displayed list of drivers, and click **Next**.

- onboard RAID Controller

HPE Smart Array S100i SR Gen10 SW RAID

- RAID Controller (N8103-189/192)

HPE Smart Array E208i-a SR Gen10

- RAID Controller (N8103-190/193)

HPE Smart Array P408i-a SR Gen10

- RAID Controller (N8103-191/194)

HPE Smart Array P816i-a SR Gen10

- RAID Controller (N8103-195)

HPE Smart Array E208i-p SR Gen10

- RAID Controller (N8103-201)

HPE Smart Array P408i-p SR Gen10

↑ Addition
↓

About installation of LAN drivers (N8104-176/186)

When using N8104-176/186, see the following supplement to install LAN drivers.

LAN boards	N8104-176/186 * Model T120h only supports N8104-186.
Cases	Assisted Installation by EXPRESSBUILDER Manual Installation by EXPRESSBUILDER
Locations	Installation Guide (Windows) - Windows Server 2016: 3.5.1 <i>Installing the LAN drivers</i> - Windows Server 2012 R2: 4.5.1 <i>Installing the LAN drivers</i>

Old	However, if N8104-176/186 is used, "Standard Program Package" has to be applied again for LAN driver installation. If the OS is setup by either "Assisted" or "Manual" option, "Standard Program Package" has to be applied twice to install the driver of N8104-176/186.
New	Install the Standard Program Package before using N8104-176/186.

About EXPRESSBUILDER

The following description indicates the changes of *Installation Guide (Windows)* when the EXPRESSBUILDER E8.10-003.01 (3.10.222) is used.

Case	Assisted Installation by EXPRESSBUILDER
Locations	Installation Guide (Windows) "Assisted Installation" - Windows Server 2016: 3.2.3 <i>Installation procedure</i> Step 4 - Windows Server 2012 R2: 4.2.3 <i>Installation procedure</i> Step 4

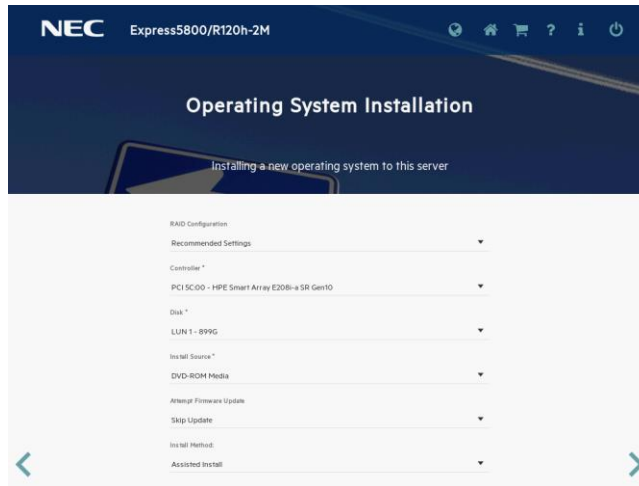
New * Underlines indicate the changes of guide.

4. Choose **Assisted Install** of **Install Method**.

Specify the following if necessary, and then click the ">" icon of the lower right of the screen.

Note

When choosing **DVD-ROM Media** or **USB** at **Install Source**, click ">" icon after setting the media.



- **RAID Configuration**
Choose Keep Current Setting after configuring a RAID array by SSA or System Utilities when using RAID controller.
- **Controller**
Choose the controller of installation destination.
- **Disk**
Choose the disk of installation destination.
- **Install Source**
Choose an OS installation source from the following types.

DVD-ROM Media	DVD-ROM
File on a USB drive	USB flash drive
SMB/CIFS (Windows Share)	Network sharing folder
An anonymous FTP server	<u>This option is not available.</u>
<u>Install ClearOS from the Internet</u>	<u>This option is not available.</u>

↑ New
↓ Addition

Each media supports the following file format.

File on a USB drive	Flat, ISO
SMB/CIFS (Windows Share)	Flat, ISO

Flat : a standard folder/file structure
ISO : single ISO or UDF file

- **Attempt Firmware Update**
Choose **Skip Update**. The other options are not available.
- **Install Method**
Choose **Assisted Install**.

Case	Assisted Installation by EXPRESSBUILDER
Locations	Installation Guide (Windows) “Assisted Installation” - Windows Server 2016: 3.2.3 Installation procedure Step 6 - Windows Server 2012 R2: 4.2.3 Installation procedure Step 6

New * Underlines indicate the changes of guide.

6. On the following screen, specify settings for the OS installation. Set your time zone to **Greenwich Mean Time (GMT)~**.

New

You can enable the functions of Windows, if necessary.

<u>Install the HyperV role on this system</u>	<u>The HyperV role can be enabled.</u>
<u>Enable Windows Firewall</u>	<u>Windows Firewall can be enabled.</u>

Addition

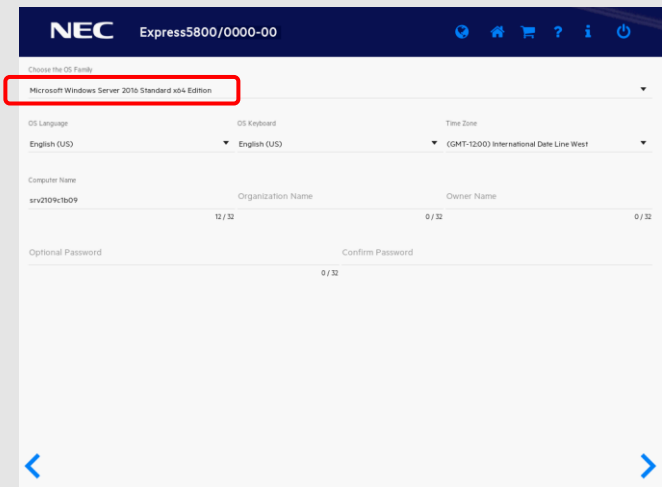
Note

Optional Password can be used alphanumeric characters only.
If a sign (such as "!") is included, an error message will appear.

Case	Manual Installation by EXPRESSBUILDER
Locations	Installation Guide (Windows) "Manual Installation" - Windows Server 2016: 3.3.3 Installation procedure Step 6 - Windows Server 2012 R2: 4.3.3 Installation procedure Step 6

New

Step 6 screen does not appear. Skip this step and go to Step 7.

Old	<p>6. The next settings are not needed. Click ">" icon of lower right of the screen.</p> 
New	Go to Step 7. (Step 6 screen does not appear)