

Steps to update firmware by Starter Pack DVD

This document includes notice for using starter Pack DVD to update Firmware.

Please see the following steps to update firmware directly by Starter Pack DVD without Windows and Linux OS environment.

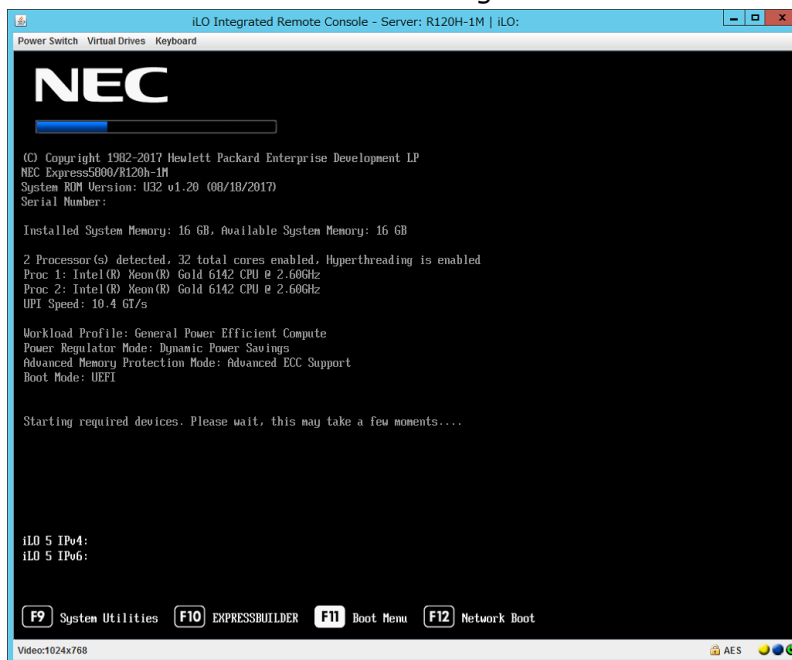
When the iLO FW version is 1.35, perform step (1)-(6), and then update the iLO FW version to 1.38 by performing step (7) and after.

(1) Disable the secure booting.

Run **System Utilities**, and then proceed to **Secure Boot Settings** in **System Configuration > BIOS/Platform Configuration (RBSU) > Server Security**.

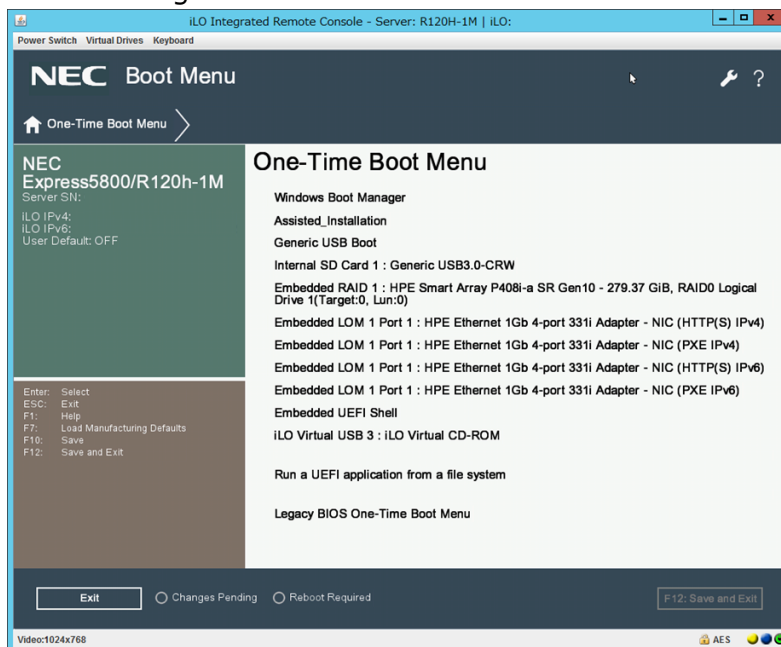
(2) Power off and power on the server or restart the server by pressing <Ctrl>+<Alt>+<Delete> keys.

The POST will start as the following screen.



(3) Press <F11> key during the POST.

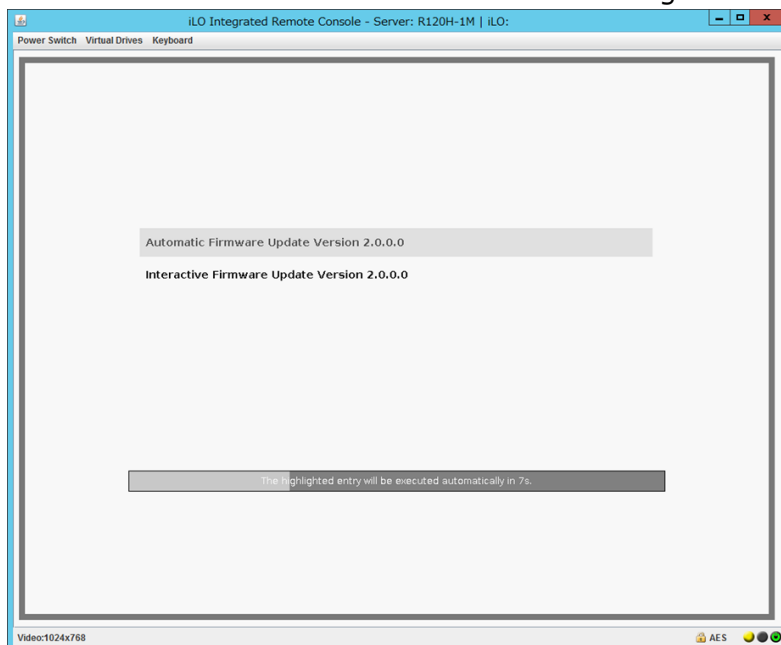
The following Boot Menu is shown.



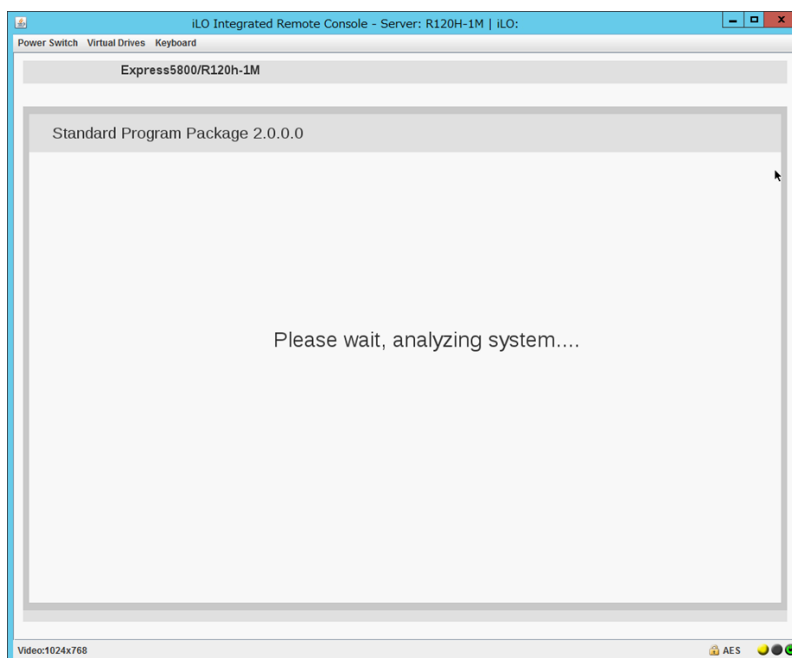
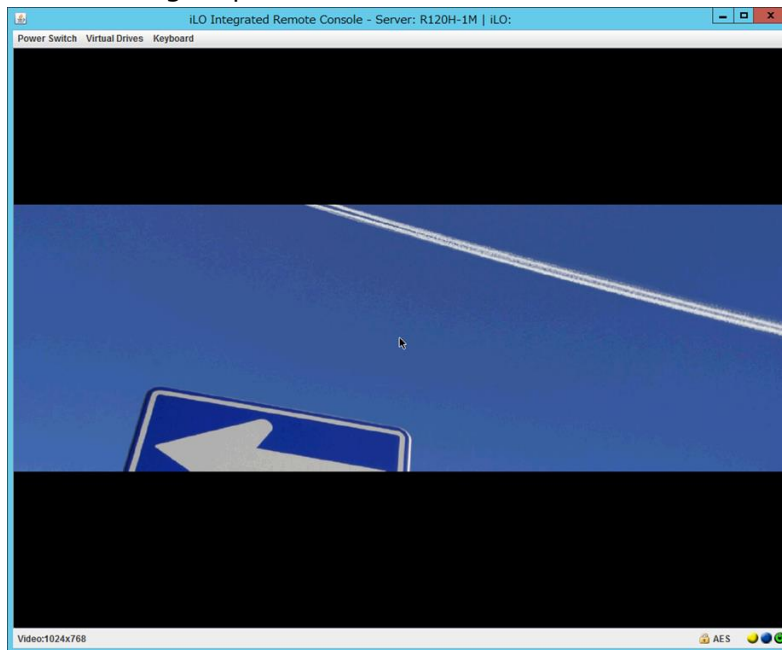
(The list of Boot Menu will be changed depending on the system environment)

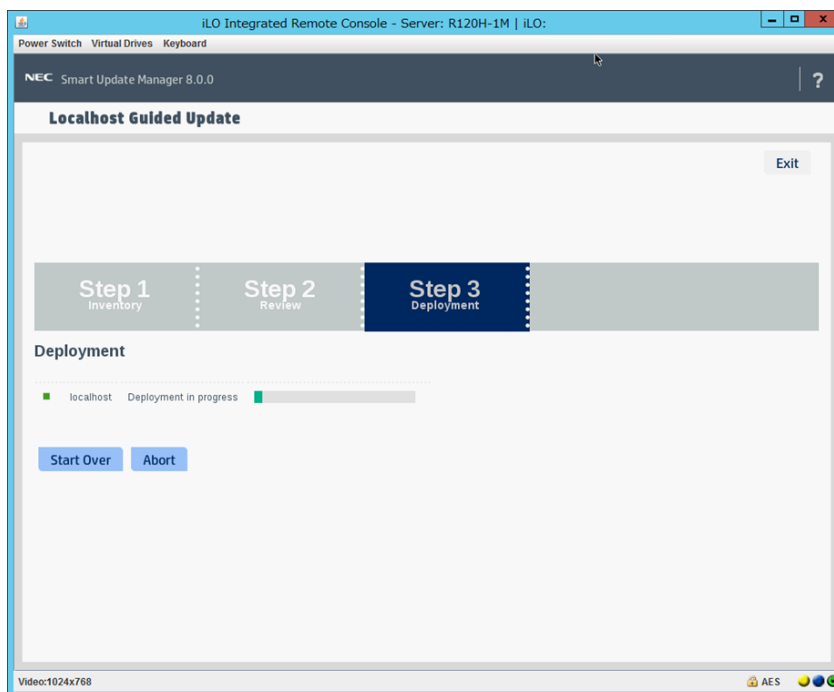
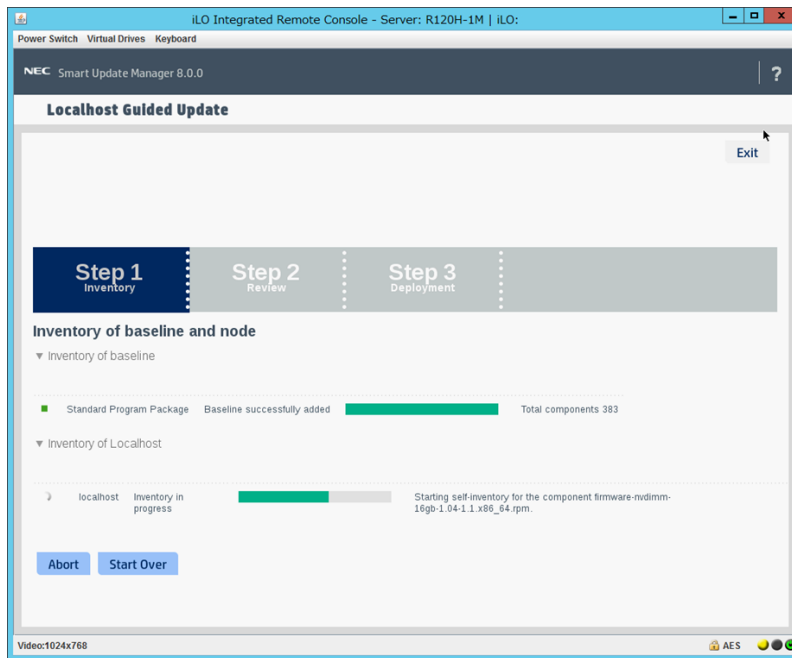
(4) From the Boot Menu, choose the drive specified by Step (2), and then exit the menu.

The Starter Pack DVD will start and the following menu is shown.

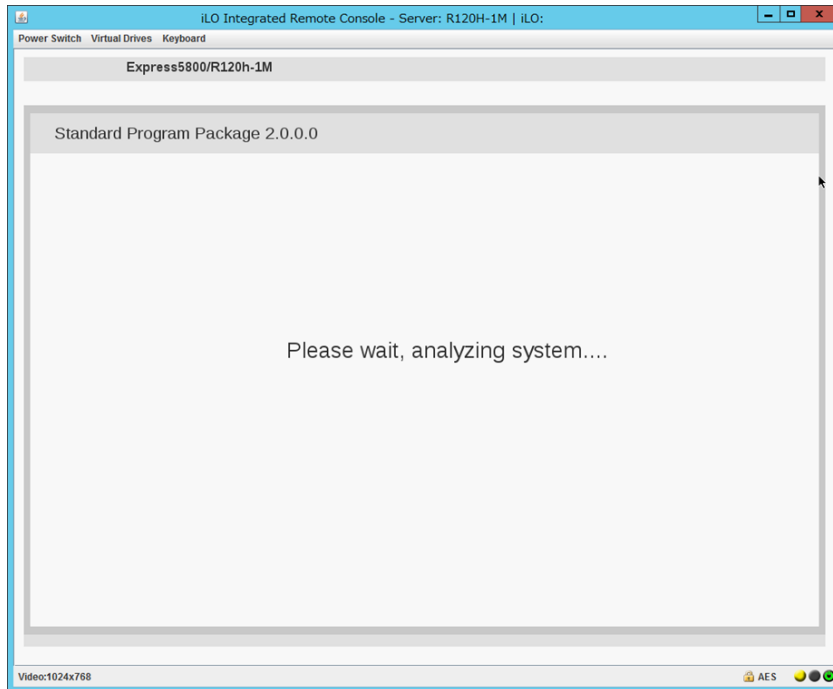


- (5) Choose **Automatic Firmware Update**. If no key is pressed within 10 seconds, the Automatic firmware update process will start automatically. After the Automatic Firmware Update starts, the update will progress through the following steps:





When the update is finished, the following screen is shown, and then the server will restart automatically. Please remove the DVD from the drive before restarting. If you cannot remove the DVD, see *Troubleshooting*.



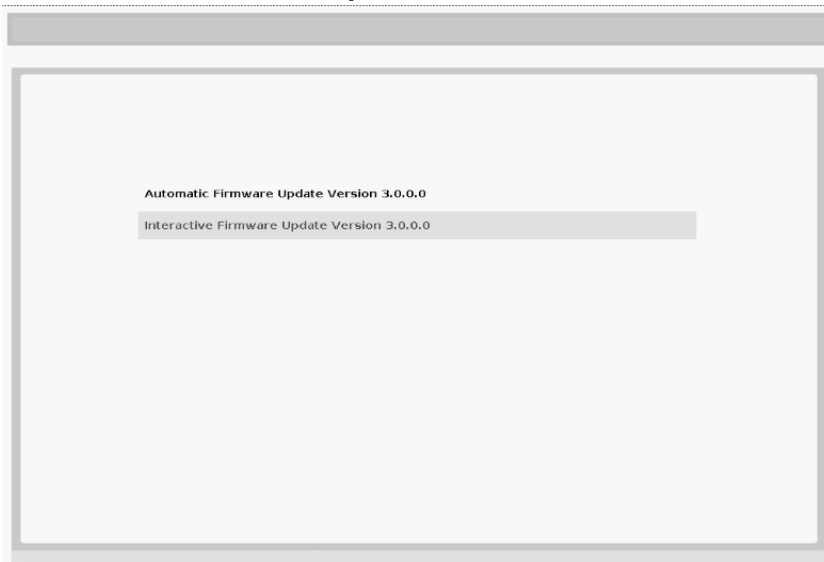
(6) Enable the secure booting if necessary.

The procedure is complete after the system restarts.

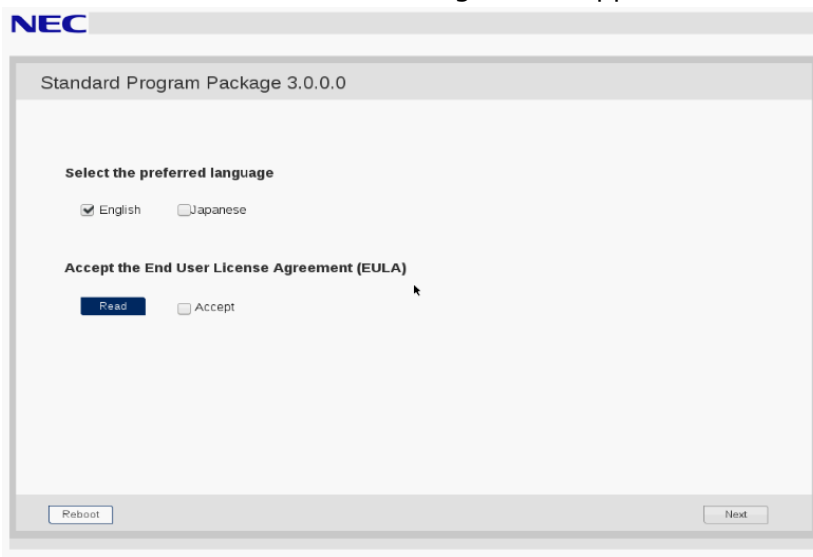
When Internal Slim DVD-ROM drive [N8151-137] or Internal DVD-SuperMulti Drive [N8151-138] is used, the Starter Pack DVD cannot be ejected after the system restarts. For details, see *Troubleshooting*.

When the iLO FW version is 1.35, continue to update step (7) and after.

(7) To boot from the Starter Pack DVD, perform step (1)-(4) again, and then choose **Interactive Firmware Update** from the menu below.



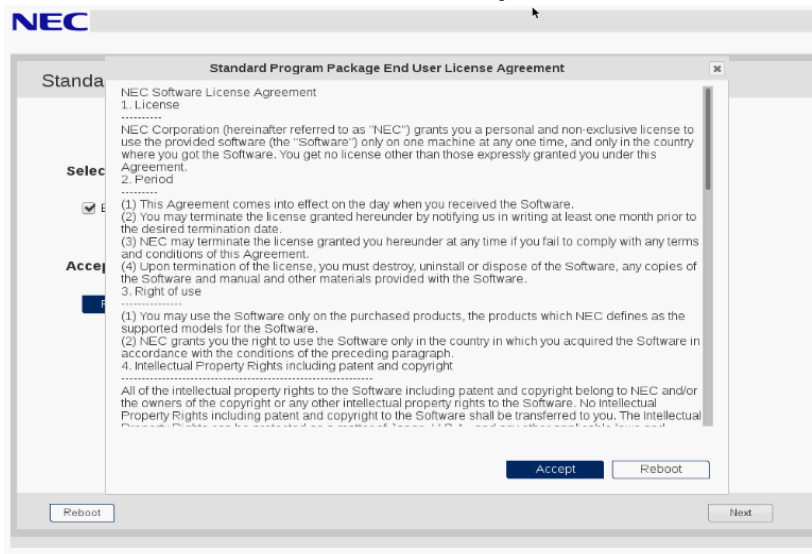
Wait for a while until the following screen appears.



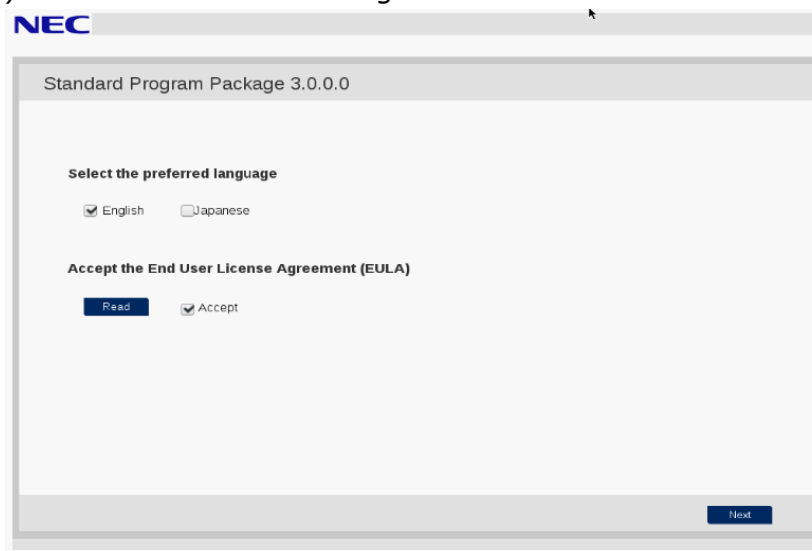
(8) Click **Read** under **Accept the End User License Agreement (EULA)**.

Dialog box will appear.

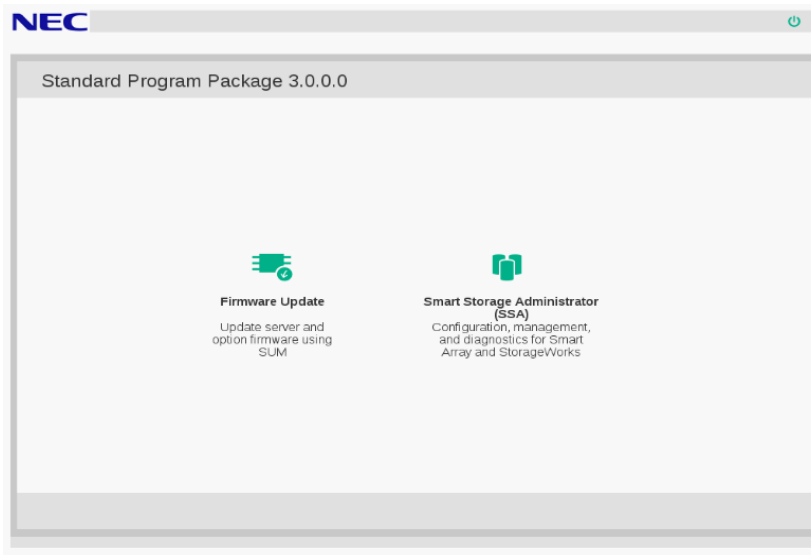
(9) Read the EULA, and then click **Accept**.



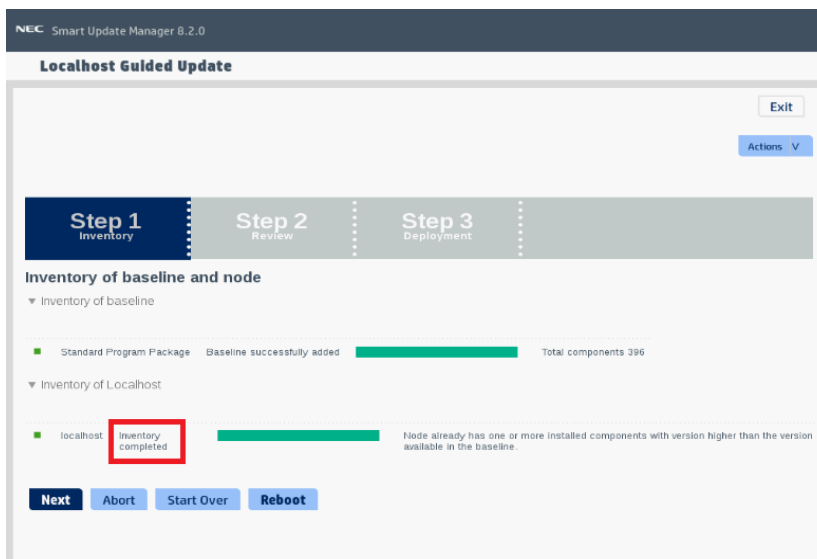
(10) Click **Next** on the lower right of the screen.



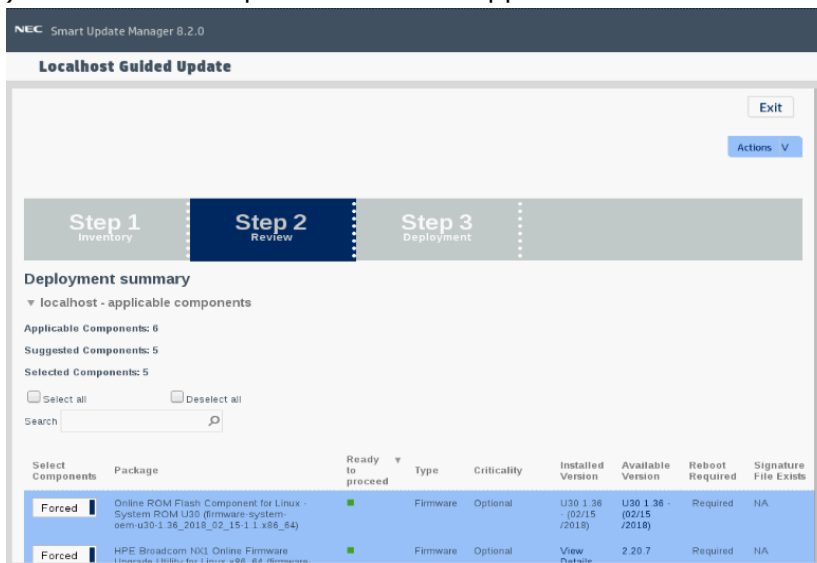
(11) Click **Firmware Update**.



The Localhost Guided Update screen will appear and the inventory process is started. Wait for a while until "Inventory completed" message appears on the screen like the below.



(12) Click **Next**. “Step 2 Review” will appear.



A list of firmware will appear.

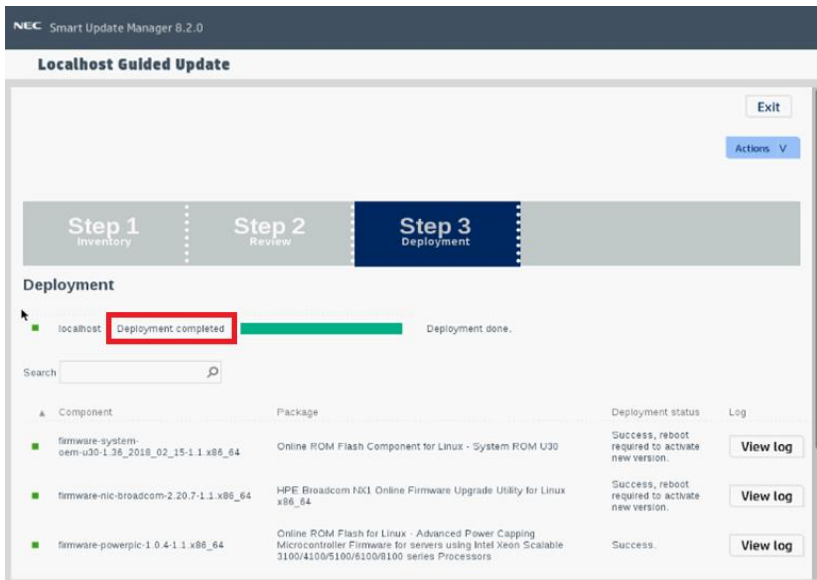


(The firmware displayed depends on the server hardware configuration)

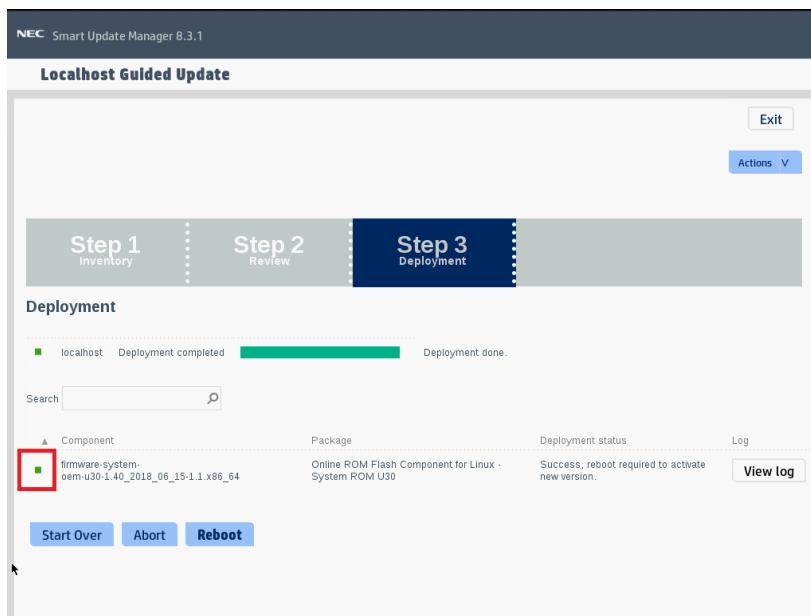
(13) Click "ilo5-1.35" firmware. You can select by clicking the button displayed on the left side of the firmware package name. Make sure that the other firmware are not selected (do not update them).

(14) Scroll the window if necessary, and then click **Deploy** on the lower left of the screen. "Step 3 Deployment" will start.

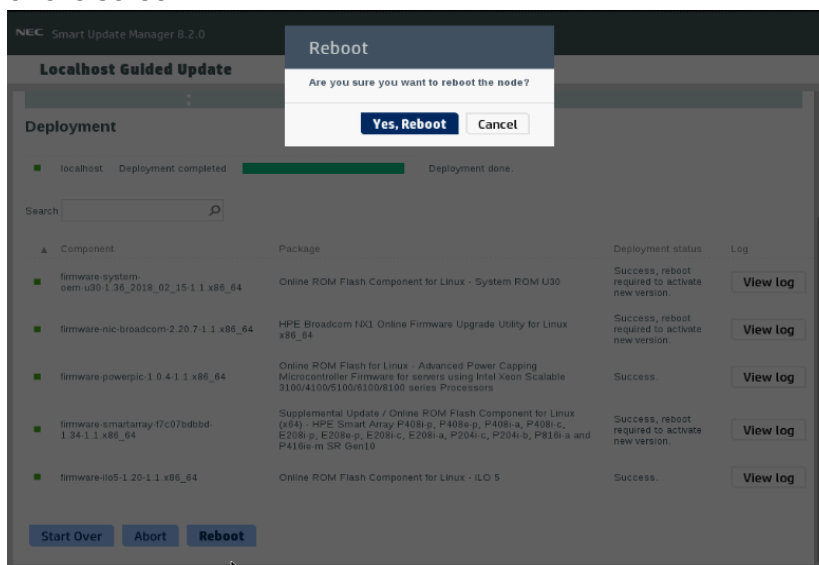
Wait for a while until "Deployment completed" message appears on the screen like the below.



To confirm the success of updating, check that the status icons are green like the below.



(15) Eject the Starter Pack DVD from the drive, and then click **Reboot** on the lower left of the screen.



(16) Enable the secure booting if necessary.

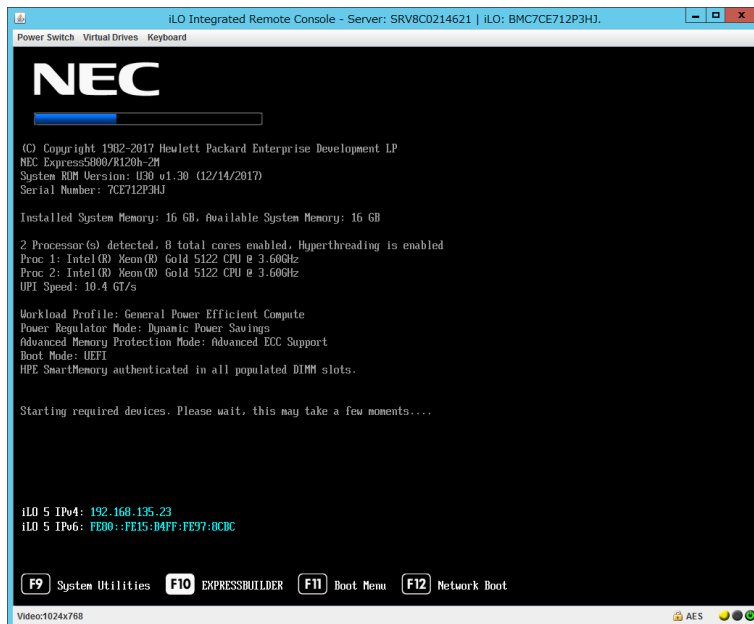
The procedure is complete after the system restarts.

Troubleshooting

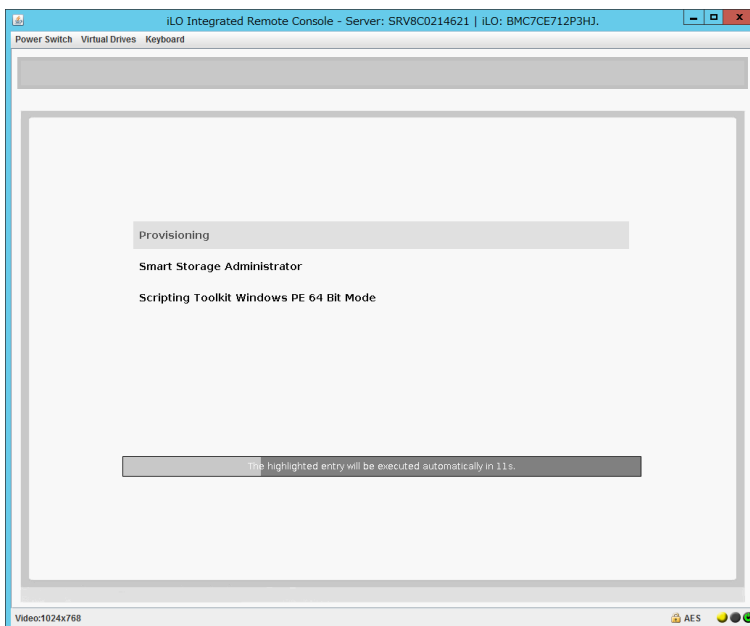
If the DVD eject button does not work after restarting the server, please see the following steps to eject the DVD.

- (1) Power off/on the server or restart the server by pressing <Ctrl> + <Alt> + <Delete> keys.

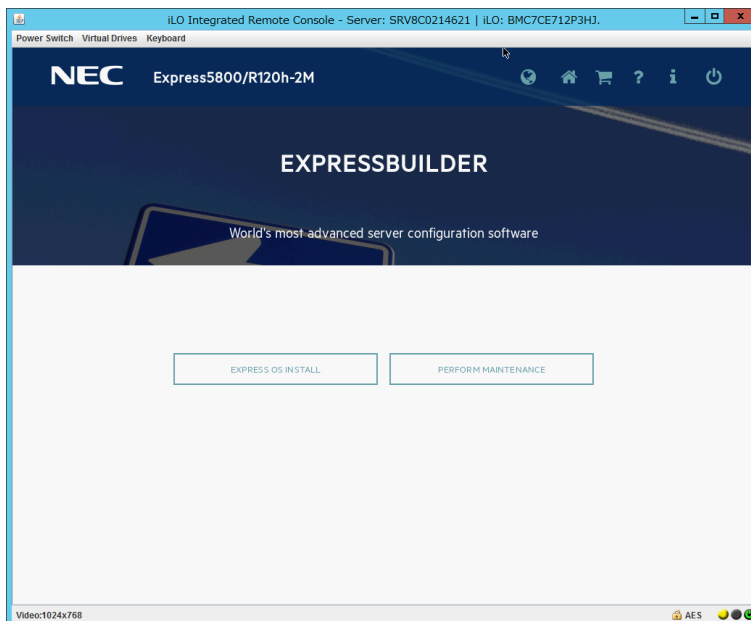
The POST will start as the following screen.



- (2) Press F10 key during POST.
The following screen will appear.

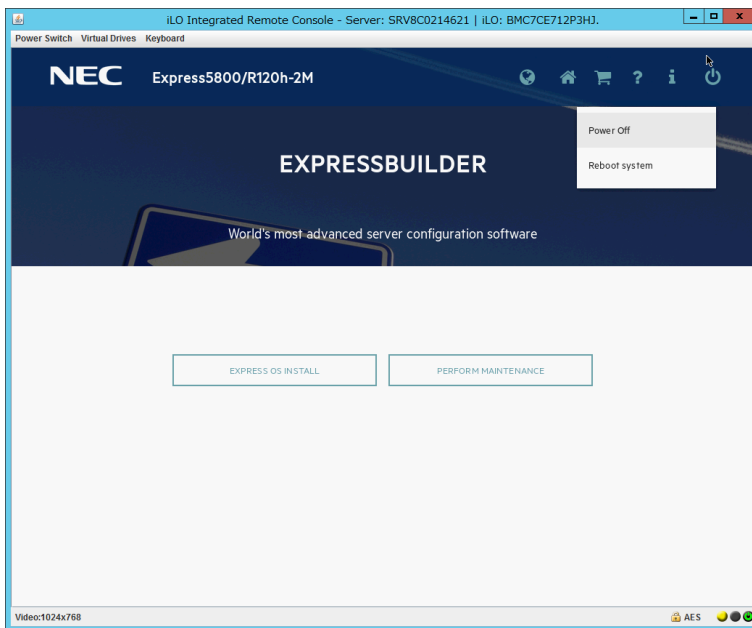


- (3) Choose **Provisioning**. If no key is pressed within 10 seconds, the Provisioning will start automatically.
After a while, the following screen will appear.



(4) To eject the DVD, press the DVD eject button on the DVD drive.

(5) To exit the EXPRESSBUILDER, choose **Power off** or **Reboot system**.



The procedure is completed.