

# **Installation Guide (Windows Server 2022)**

**NEC Express Server  
Express5800 Series**

**Express5800/R120i-1M, R120i-2M**

**Chapter 1 Installing Windows**

**Chapter 2 Maintenance**

**Chapter 3 Appendix**

# Contents

Contents .....	2
Introduction .....	4
Conventions Used in This Document .....	5
Notations used in the text .....	5
Optical disk drive.....	5
Hard disk drive .....	5
Removal Media .....	5
Abbreviations of Operating Systems.....	6
About description of model names .....	6
Trademarks .....	7
License Notification .....	8
License sentence .....	8
Warnings and Additions to This Document.....	11
Latest editions.....	11
Chapter 1 Installing Windows .....	12
<b>1.1</b> Information of Windows Installation .....	13
<b>1.1.1</b> Starting EXPRESSBUILDER .....	14
<b>1.1.2</b> Supported Windows OS.....	14
<b>1.1.3</b> Supported Mass Storage Controllers.....	15
<b>1.1.4</b> Supported Optional LAN board.....	16
<b>2.1</b> Flow of Windows Installation .....	17
<b>3.1</b> Installing Windows Server 2022 .....	18
<b>3.1.1</b> Precautions of Windows Server 2022 Installation.....	18
<b>3.1.2</b> Manual Installation.....	25
3.1.2.1 Setup flow .....	25
3.1.2.2 Requirements for Setup .....	26
3.1.2.3 Installation procedure .....	26
<b>3.1.3</b> Standard Program Package Installation.....	34
3.1.3.1 Installing Standard Program Package on Desktop Experience.....	34
3.1.3.2 Installing Standard Program Package on Server Core .....	37
<b>3.1.4</b> Setup of Device Drivers .....	38
3.1.4.1 Installing the LAN drivers .....	38
3.1.4.2 Setting up LAN drivers .....	39
3.1.4.3 Using Graphics Accelerator .....	40
3.1.4.4 Using RAID Controller (N8103-189/190/191/192/193/194/195/201/237/238) .....	40
3.1.4.5 Using 480GB SSD Adapter for OS Boot (N8103-239) .....	40
<b>3.1.5</b> License Authentication .....	41
3.1.5.1 Desktop Experience.....	41
3.1.5.2 Server Core .....	45
<b>3.1.6</b> Setup of Windows Server 2022 NIC Teaming (LBFO) .....	47
3.1.6.1 Launching the NIC teaming setup tool .....	47
3.1.6.2 Creating a team .....	47
3.1.6.3 Removing a team.....	48
3.1.6.4 Notes and restrictions .....	48
<b>3.1.7</b> Installing Applications .....	49
<b>4.1</b> Setting up for Maintenance.....	51
<b>4.1.1</b> Specifying Memory Dump Settings (Debug Information) .....	51
<b>4.1.2</b> How to Create a User-mode Process Dump File .....	57
<b>5.1</b> Backup of system information .....	58

Chapter 2 Maintenance .....	59
1. Failure Information.....	60
1.1 Collecting Event Logs .....	60
1.2 Collecting Configuration Information .....	62
1.3 Collecting User-Mode Process Dump .....	63
1.4 Collecting Memory Dump.....	63
2. Troubleshooting .....	64
3. Windows System Recovery.....	64
3.1 Recovery of Windows Server 2022 .....	64
Chapter 3 Appendix.....	65
1. List of Windows Event Logs .....	66
Revision Record.....	74

---

# Introduction

---

Thank you for purchasing our product.

When using the **EXPRESSBUILDER E8.10-010.01 (3.70.46)**, see this manual before installing Windows.

Please read carefully the instructions and keep this document for your future reference.

---

# Conventions Used in This Document

---

---

## Notations used in the text

---

The symbols used in this document include the following:

<b>Important</b>	Indicates critical items that must be followed when handling hardware or operating software. If the procedures described are not followed, <b><u>hardware failure, data loss, and other serious malfunctions could occur.</u></b>
<b>Note</b>	Indicates items that must be confirmed when handling hardware or operating software.
<b>Tips</b>	Indicates information that is helpful to keep in mind when using this server.

---

## Optical disk drive

---

This server is equipped with one of the following drives. These drives are referred to as *optical disk drive* in this document.

- **DVD-ROM drive**
- **DVD Super MULTI drive**

---

## Hard disk drive

---

Unless otherwise stated, *hard disk drive* described in this document refer to the following.

- **Hard disk drive (HDD)**
- **Solid state drive (SSD)**

---

## Removal Media

---

Unless otherwise stated, *removal media* described in this document refer to both of the following.

- **USB Memory**
- **Flash FDD**

---

## Abbreviations of Operating Systems

---

Windows Operating Systems are referred to as follows.

**See Chapter 1 (1.2 Supported Windows OS) for detailed information.**

Notations in this document	Official names of Windows
Windows Server 2022	Windows Server 2022 Standard
	Windows Server 2022 Datacenter

---

## About description of model names

---

The following models are supported by this document. If not mentioned especially, the contents is for all models.  
When the contents differs by model, each contents are described with model name.

Supported model is as follows.

Express5800/R120i-1M

Express5800/R120i-2M

---

## Trademarks

---

Microsoft, Windows, and Windows Server are registered trademarks or trademarks of Microsoft Corporation in the United States and other countries.

Intel, Pentium, and Xeon are registered trademarks of Intel Corporation of the United States.

Broadcom, NetXtreme, LiveLink, Smart Load Balancing are registered trademarks or trademarks of the Broadcom Corporation in the U.S. and other countries.

All other product, brand, or trade names used in this publication are the trademarks or registered trademarks of their respective trademark owners.

---

# License Notification

---

Open source software of following license is included in the part of this product (system ROM).

- **UEFI EDK2 License**
- **The MIT License Agreement**
- **PNG Graphics File Format Software End User License Agreement**
- **zlib End User License Agreement**

## License sentence

---

UEFI EDK2 License

UEFI EDK2 Open Source License

Copyright (c) 2012, Intel Corporation. All rights reserved.

Redistribution and use in source and binary forms, with or without modification, are permitted provided that the following conditions are met:

- \* Redistributions of source code must retain the above copyright notice, this list of conditions and the following disclaimer.
- \* Redistributions in binary form must reproduce the above copyright notice, this list of conditions and the following disclaimer in the documentation and/or other materials provided with the distribution.

THIS SOFTWARE IS PROVIDED BY THE COPYRIGHT HOLDERS AND CONTRIBUTORS "AS IS" AND ANY EXPRESS OR IMPLIED WARRANTIES, INCLUDING, BUT NOT LIMITED TO, THE IMPLIED WARRANTIES OF MERCHANTABILITY AND FITNESS FOR A PARTICULAR PURPOSE ARE DISCLAIMED. IN NO EVENT SHALL THE COPYRIGHT HOLDER OR CONTRIBUTORS BE LIABLE FOR ANY DIRECT, INDIRECT, INCIDENTAL, SPECIAL, EXEMPLARY, OR CONSEQUENTIAL DAMAGES (INCLUDING, BUT NOT LIMITED TO, PROCUREMENT OF SUBSTITUTE GOODS OR SERVICES; LOSS OF USE, DATA, OR PROFITS; OR BUSINESS INTERRUPTION) HOWEVER CAUSED AND ON ANY THEORY OF LIABILITY, WHETHER IN CONTRACT, STRICT LIABILITY, OR TORT (INCLUDING NEGLIGENCE OR OTHERWISE) ARISING IN ANY WAY OUT OF THE USE OF THIS SOFTWARE, EVEN IF ADVISED OF THE POSSIBILITY OF SUCH DAMAGE.

=====

UEFI FAT File System Driver Open Source License

Copyright (c) 2006, Intel Corporation. All rights reserved.

Redistribution and use in source and binary forms, with or without modification, are permitted provided that the following conditions are met:

- . Redistributions of source code must retain the above copyright notice, this list of conditions and the following disclaimer.
- . Redistributions in binary form must reproduce the above copyright notice, this list of conditions and the following disclaimer in the documentation and/or other materials provided with the distribution.
- . Neither the name of Intel nor the names of its contributors may be used to endorse or promote products derived from this software without specific prior written permission.



THIS SOFTWARE IS PROVIDED BY THE COPYRIGHT HOLDERS AND CONTRIBUTORS "AS IS" AND ANY EXPRESS OR IMPLIED WARRANTIES, INCLUDING, BUT NOT LIMITED TO, THE IMPLIED WARRANTIES OF MERCHANTABILITY AND FITNESS FOR A PARTICULAR PURPOSE ARE DISCLAIMED. IN NO EVENT SHALL THE COPYRIGHT OWNER OR CONTRIBUTORS BE LIABLE FOR ANY DIRECT, INDIRECT, INCIDENTAL, SPECIAL, EXEMPLARY, OR CONSEQUENTIAL DAMAGES (INCLUDING, BUT NOT LIMITED TO, PROCUREMENT OF SUBSTITUTE GOODS OR SERVICES; LOSS OF USE, DATA, OR PROFITS; OR BUSINESS INTERRUPTION) HOWEVER CAUSED AND ON ANY THEORY OF LIABILITY, WHETHER IN CONTRACT, STRICT LIABILITY, OR TORT (INCLUDING NEGLIGENCE OR OTHERWISE) ARISING IN ANY WAY OUT OF THE USE OF THIS SOFTWARE, EVEN IF ADVISED OF THE POSSIBILITY OF SUCH DAMAGE.

Additional terms: In addition to the forgoing, redistribution and use of the code is conditioned upon the FAT 32 File System Driver and all derivative works thereof being used for and designed only to read and/or write to a file system that is directly managed by Intel's Extensible Firmware Initiative (EFI) Specification v. 1.0 and later and/or the Unified Extensible Firmware Interface (UEFI) Forum's UEFI Specifications v.2.0 and later (together the "UEFI Specifications"); only as necessary to emulate an implementation of the UEFI Specifications; and to create firmware, applications, utilities and/or drivers.

=====

#### The MIT License Agreement

##### The MIT License

Copyright (c) <year> <copyright holders>

Permission is hereby granted, free of charge, to any person obtaining a copy of this software and associated documentation files (the "Software"), to deal in the Software without restriction, including without limitation the rights to use, copy, modify, merge, publish, distribute, sublicense, and/or sell copies of the Software, and to permit persons to whom the Software is furnished to do so, subject to the following conditions:

The above copyright notice and this permission notice shall be included in all copies or substantial portions of the Software.

THE SOFTWARE IS PROVIDED "AS IS", WITHOUT WARRANTY OF ANY KIND, EXPRESS OR IMPLIED, INCLUDING BUT NOT LIMITED TO THE WARRANTIES OF MERCHANTABILITY, FITNESS FOR A PARTICULAR PURPOSE AND NONINFRINGEMENT. IN NO EVENT SHALL THE AUTHORS OR COPYRIGHT HOLDERS BE LIABLE FOR ANY CLAIM, DAMAGES OR OTHER LIABILITY, WHETHER IN AN ACTION OF CONTRACT, TORT OR OTHERWISE, ARISING FROM, OUT OF OR IN CONNECTION WITH THE SOFTWARE OR THE USE OR OTHER DEALINGS IN THE SOFTWARE.

## PNG Graphics File Format Software End User License Agreement

---

Copyright (c) 1998-2001 Greg Roelofs. All rights reserved.

This software is provided "as is," without warranty of any kind, express or implied. In no event shall the author or contributors be held liable for any damages arising in any way from the use of this software.

Permission is granted to anyone to use this software for any purpose, including commercial applications, and to alter it and redistribute it freely, subject to the following restrictions:

1. Redistributions of source code must retain the above copyright notice, disclaimer, and this list of conditions.
2. Redistributions in binary form must reproduce the above copyright notice, disclaimer, and this list of conditions in the documentation and/or other materials provided with the distribution.
3. All advertising materials mentioning features or use of this software must display the following acknowledgment:

This product includes software developed by Greg Roelofs and contributors for the book, "PNG: The Definitive Guide," published by O'Reilly and Associates.

---

## zlib End User License Agreement

## zlib License

zlib.h -- interface of the 'zlib' general purpose compression library  
version 1.2.2, October 3rd, 2004

Copyright (C) 1995-2004 Jean-loup Gailly and Mark Adler

This software is provided 'as-is', without any express or implied warranty. In no event will the authors be held liable for any damages arising from the use of this software.

Permission is granted to anyone to use this software for any purpose, including commercial applications, and to alter it and redistribute it freely, subject to the following restrictions:

1. The origin of this software must not be misrepresented; you must not claim that you wrote the original software. If you use this software in a product, an acknowledgment in the product documentation would be appreciated but is not required.
2. Altered source versions must be plainly marked as such, and must not be misrepresented as being the original software.
3. This notice may not be removed or altered from any source distribution.

Jean-loup Gailly jloup@gzip.org  
Mark Adler madler@alumni.caltech.edu

---

## Warnings and Additions to This Document

---

1. Unauthorized reproduction of the contents of this document, in part or in its entirety, is prohibited.
2. This document is subject to change at any time without notice.
3. Do not make copies or alter the document content without permission from NEC Corporation.
4. If you have any concerns, or discover errors or omissions in this document, contact your sales representative.
5. Regardless of article 4, NEC Corporation assumes no responsibility for effects resulting from your operations.
6. The sample values used in this document are not actual values.

**Keep this document for future use.**

---

### Latest editions

---

This document was created based on the information available at the time of its creation. The screen images, messages and procedures are subject to change without notice. Substitute as appropriate when content has been modified.

The most recent version of this guide, as well as other related documents, is also available for download from the following website.

<https://www.nec.com/>

---

---

# Installing Windows

This manual explains the setup procedure for a physical environment.

Read through this chapter to set up the Windows correctly.

### **1. Information of Windows Installation**

Describes Supported Windows OS and mass storage controllers which is supported by EXPRESSBUILDER/Starter Pack.

### **2. Flow of Windows Installation**

Describes the flow chart of Windows installation.

### **3. Installing Windows Server 2022**

Describes how to install Windows Server 2022.

### **4. Setting up for Maintenance**

Describes the features that should be set up for maintenance in advance.

### **5. Backup of system information**

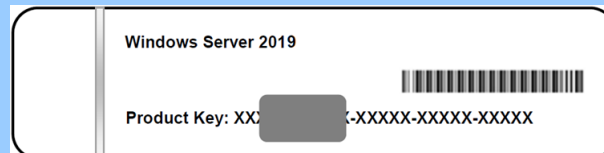
Describes how to back up the setting information of the system in advance of troubles.

# 1. Information of Windows Installation

This section describes the points of using EXPRESSBUILDER/Starter Pack to install Windows operating system.

**Important**

The product key on the Certificate of Authenticity (COA) label is necessary information when authenticate the license. Scrape off with a coin or the like lightly the scratch that covers a part of the product key. When you scrape, be careful not to break the part that the product key is printed on.



The label cannot be reissued if it is lost or stained. It is recommended to write down the product key and keep it with other accessories.

Refer to the following for the installation of virtual OS.

If your virtualization infrastructure is Hyper-V:

Refer to the following web site for the Hyper-V setting and the installation procedure of the guest OS and so on.

<https://www.58support.nec.co.jp/global/download/w2022/hyper-v/hyper-v-ws2022.html>

If your virtualization infrastructure is not Hyper-V:

Refer to the manual provided by virtualization infrastructure vendor to prepare the virtual environment. Prepare a media or an ISO image of the OS to install.

1. Start the virtual machine from a media or an ISO image of the OS to install.
2. Follow the on-screen instruction to complete the OS installation.
3. Refer to the manual provided by virtualization infrastructure vendor to install the necessary services and applications.

## 1.1 Starting EXPRESSBUILDER

Use EXPRESSBUILDER to reconfigure RAID arrays.

For details, see *Chapter 1 (4. Details of EXPRESSBUILDER) in Maintenance Guide (Common)*.

### Usage

Remove a CD/DVD and removable media from the server, restart the server and press <F10> key (EXPRESSBUILDER) during POST.

## 1.2 Supported Windows OS

You can install the following editions of Windows operating system.

**EB** : Rapid Setup

**OS** : Manual installation

Name of Windows OS		Boot mode		Installation method	
		UEFI	Legacy	<b>EB</b>	<b>OS</b>
Windows Server 2022 *	Standard	✓	N/A	N/A	✓
	Datacenter	✓	N/A	N/A	✓

✓ : Supported

\* "Nano Server" is not supported.

## 1.3 Supported Mass Storage Controllers

The table below lists the controllers for this server, supported by EXPRESSBUILDER/Starter Pack.

If a controller not mentioned below is connected, set it up while referring to the instructions supplied with the controller.

	R120i-1M	R120i-2M
<b>RAID controller supporting the installation of OS at EXPRESSBUILDER</b>		
N8103-189 RAID Controller (RAID 0/1)	✓	✓
N8103-190 RAID Controller (2GB, RAID 0/1/5/6)	✓	✓
N8103-191 RAID Controller (4GB, RAID 0/1/5/6)	✓	✓
N8103-192 RAID Controller (RAID 0/1)	✓	N/A
N8103-193 RAID Controller (2GB, RAID 0/1/5/6)	✓	N/A
N8103-194 RAID Controller (4GB, RAID 0/1/5/6)	✓	N/A
N8103-195 RAID Controller (RAID 0/1)	✓	✓
N8103-201 RAID Controller (2GB, RAID 0/1/5/6)	✓	✓
N8103-237 RAID Controller (4GB, RAID 0/1/5/6)	✓	✓
N8103-238 RAID Controller (8GB, RAID 0/1/5/6)	✓	✓
N8103-239 480GB SSD Adapter for OS Boot (RAID 1)	✓	✓

✓: Supported

---

## ***1.4*** Supported Optional LAN board

---

The table below lists the optional LAN boards for this server, supported by Starter Pack.

	<b>R120i-1M</b>	<b>R120i-2M</b>
N8104-207 Dual Port 10GBASE-T LOM Card	✓	✓
N8104-210 Dual Port 10GBASE-T Adapter	✓	✓
N8104-211 Dual Port 10/25GBASE SFP28 Adapter	✓	✓

✓: Supported

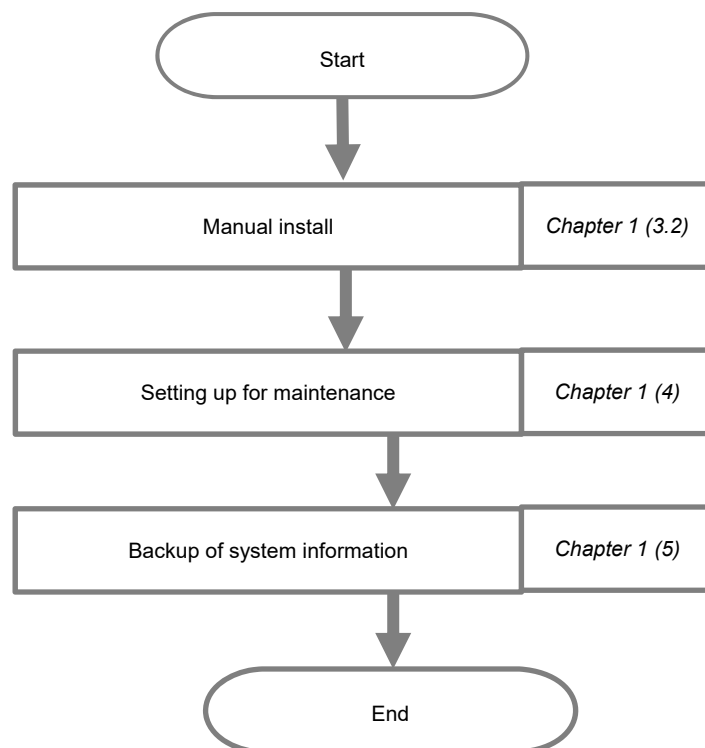


---

## 2. Flow of Windows Installation

---

Read a proper section to install Windows according to the following figure.



**Important** After building environment, back up the setting information of the system in advance of any troubles.

## 3. Installing Windows Server 2022

### 3.1 Precautions of Windows Server 2022 Installation

Read the precautions explained this section before installing.

**EB**

: Rapid Setup

**OS**

: Manual Installation

BIOS setting			
—	—	OS	<p>Change <b>Boot Mode</b> to <b>UEFI Mode</b>. For details, see <i>Chapter 2 (1. System Utilities)</i> in <i>Maintenance Guide</i>.</p> <p><b>System Configuration &gt; BIOS/Platform Configuration (RBSU) &gt; Boot Options &gt; Boot Mode &gt; UEFI Mode</b></p>
—	—	OS	<p>Select <b>Enabled</b> for x2APIC feature of processor. For details, see <i>Chapter 2 (1. System Utilities)</i> in <i>Maintenance Guide</i>.</p> <p><b>System Configuration &gt; BIOS/Platform Configuration (RBSU) &gt; Processor Options &gt; Processor x2APIC Support &gt; Enabled</b></p>
—	—	OS	<p><b>R120i-1M/R120i-2M</b></p> <p>Change <b>time format</b> to the <b>Coordinated Universal Time (UTC)</b>. For details, see <i>Chapter 1 (1. System Utilities)</i> in <i>Maintenance Guide (Common)</i>.</p> <p><b>System Configuration &gt; BIOS/Platform Configuration (RBSU) &gt; Date and time &gt; Time Format : Coordinated Universal Time (UTC)</b></p>
—	—	OS	<p><b>R120i-1M/R120i-2M</b></p> <p>Change <b>time zone</b> to the <b>Set arbitrary time zone</b>. For details, see <i>Chapter 1 (1. System Utilities)</i> in <i>Maintenance Guide (Common)</i>.</p> <p><b>System Configuration &gt; BIOS/Platform Configuration (RBSU) &gt; Date and time &gt; Time Zone : Set arbitrary time zone</b></p>
—	—	OS	<p>When installing TPM, set the following settings. For details, see <i>Chapter 1 (1. System Utilities)</i> in <i>Maintenance Guide (Common)</i>.</p> <p><b>System Configuration &gt; BIOS/Platform Configuration (RBSU) &gt; Server Security &gt; Advanced Security Options &gt; Platform Certificate Support &gt; [Enabled]</b></p> <p><b>System Configuration &gt; BIOS/Platform Configuration (RBSU) &gt; Server Security &gt; Trusted Platform Module Options &gt; Advanced Trusted Platform Options &gt; TPM Visibility &gt; [Visible]</b></p>

Hardware configuration			
The following hardware configurations require special procedures.			
—	—	OS	<b>Using RAID controller</b> Before you install Windows Server 2022, if using a RAID controller, configure the RAID system in advance according to the <i>Maintenance Guide</i> .
—	—	OS	<b>Installation When Multiple Logical Drives Exist</b> If you select wrong hard disk drive in Windows Server 2022 installation, the setup may erase existing data unexpectedly.
—	—	OS	<b>Reinstalling to a mirrored volume</b> When you install Windows Server 2022 in an environment with a mirrored volume created using Windows, disable mirroring before installing the operating system and enable it again after the installation. Use [Computer Management] – [Disk Management] to create, disable, or remove the mirrored volume.
—	—	OS	<b>Peripherals such as RDX</b> Remove a RDX device before installing. Some peripherals need to be halted before installation. Refer to the manual provided with the peripherals for how to set a device appropriate to installation.
—	—	OS	<b>DAT, LTO, and similar media</b> Do not set media that is unnecessary to installation during setup.
—	—	OS	<b>Reinstalling to dynamic disks</b> Because dynamic disks are not recommended for Windows OS, convert it to basic disk and then install again.
—	—	OS	<b>Setup when mass memory is installed</b> <p>If mass memory is installed in your system, the large size of paging file is required at installation, and the partition size for storing debug information (dump file) cannot be allocated.</p> <p>If you fail to create the partition, allocate the required size to multiple disks according to the following steps.</p> <ol style="list-style-type: none"> <li>1. Set the system partition size to a size sufficient to install the OS and paging file.</li> <li>2. Specify another disk as the destination to save the debug information (required dump file size) according to <i>Chapter 1 (4. Setting up for Maintenance)</i>.</li> </ol> <p>If the hard disk drive does not have enough free area to write the debug information, set the partition size to a size sufficient to install the OS and paging file, and then add another hard disk drive for the dump file.</p> <p><b>Note</b> If the partition size for installing Windows is smaller than the recommended size, expand the partition size or add another hard disk drive.</p>

If sufficient free area cannot be allocated for the paging file, perform either of the following after install Windows.

- **Specify a hard disk drive other than the system drive as the location to store the paging file for collecting memory dump**

Create a paging file of 16MB or more in the system drive, and

"installed memory size + 400 MB (installed memory size + 1,800 MB when the size is 4 TB or more)" or more in a drive other than the system drive.

Edit the registry shown below by using the Registry Editor to specify the drive for collecting memory dump to top.

Key	: HKEY_LOCAL_MACHINE\SYSTEM \CurrentControlSet\Control\Session Manager\Memory Management
Name	: PagingFiles

For example as following, installed memory size is 8GB(8,192MB) and specify paging file in C: drive and E: drive, and use a paging file of E: drive to collect memory dump.

\* Following value differs by specified paging file size.



Be careful of following when edit this settings.

- Be careful to edit registry.
- The setting is applied after restarting the system.
- Paging file on dynamic volume can not be used to collect memory dump.
- Because only the top drive of registry is used to collect memory dump, you need to set "installed memory size + 400 MB (installed memory size + 1,800 MB when the size is 4 TB or more)" paging file or more for 1 drive.

\* Setting paging file divided as below is incorrect.

Memory dump may not be collected.

C: Paging file whose size is 16 MB

D: Paging file whose size is "installed memory size x 0.5"

E: Paging file whose size is "installed memory size x 0.5"

F: Paging file whose size is 400 MB or 1,800MB

- If you close setting screen of paging file with [OK] button, registry value above will be changed although you do not change settings.

Opening setting screen of paging file before editing registry or after editing it, is unrelated.

When registry value is changed, you need to edit again manually, and then need to restart system to reflect settings.

– **Specify a drive other than the system drive for "Dedicated Dump File".**

Create the registry shown below by using the Registry Editor and specify the name of Dedicated Dump File.

<For example: "dedicateddumpfile.sys" in drive D>

Key	: HKEY_LOCAL_MACHINE\SYSTEM \CurrentControlSet\Control\CrashControl
Name	: DedicatedDumpFile
Type	: REG_SZ
Data	: D:\dedicateddumpfile.sys

Note the following when specifying Dedicated Dump File:

- The setting is applied after restarting the system.
- Specify a drive that has free space of "installed memory size + 400 MB" ("installed memory size + 1,800 MB" when the installed memory size is 4TB or more) or more.
- Dedicated Dump File cannot be placed in dynamic volumes.
- Dedicated Dump File is only used for collecting memory dump, and is not used as memory. Specify the paging file size so that sufficient virtual memory can be allocated in the entire system.

### System partition size

OS

The system partition size can be calculated by using the following formula.

Size required to install the OS + paging file size + dump file size + application size

#### Desktop Experience

Size required to install the OS	= 15,900 MB
Paging file size (recommended)	= installed memory size + 400MB
Dump file size	= installed memory size + 400MB (installed memory size is 4 TB or less) = installed memory size + 1,800MB (installed memory size is exceeding 4 TB)
Application size	= as required by the application

#### Server Core

Size required to install the OS	= 10,700MB
Paging file size (recommended)	= installed memory size + 400MB
Dump file size	= installed memory size + 400MB (installed memory size is 4 TB or less) = installed memory size + 1,800MB (installed memory size is exceeding 4 TB)
Application size	= as required by the application

For example, if the installed memory size is 8 GB (8,192 MB), and application size is 100 MB, the partition size is calculated as follows:

$$15,900\text{MB} + (8,192\text{MB} + 400\text{MB}) + 8,192\text{MB} + 400\text{MB} + 100\text{MB} \\ = 33,184\text{MB}$$

The above mentioned partition size is the minimum partition size required for system installation. Ensure that the partition size is sufficient for system operations.

The following partition sizes are recommended.

**Desktop Experience** : **32,768MB(32GB) or more**

**Server Core** : **32,768MB(32GB) or more**

\* 1GB = 1,024MB

**Note**

- In Windows Server 2022, a recovery partition will be created after the system partition. The system partition can not be extended because there is no unallocated area behind the system partition. Install Windows OS within sufficient partition size.
- The above paging file sizes are recommended for collecting debug information (dump file). The initial size of the Windows partition paging file must be large enough to store dump files. Make sure you set a sufficient paging file size. If the paging file is insufficient, there will be a virtual memory shortage that may result in an inability to collect correct debug information.
- Regardless of the sizes of internal memory and write debug information, the maximum size of the dump file is "installed memory size + 400 MB (installed memory size + 1,800 MB when installed memory size is 4 TB or more)".
- When installing other applications or other items, add the amount of space needed by the application to the partition.

If the partition size for installing Windows is smaller than the recommended size, expand the partition size or add another hard disk drive.

### ● When installing using Manual Installation

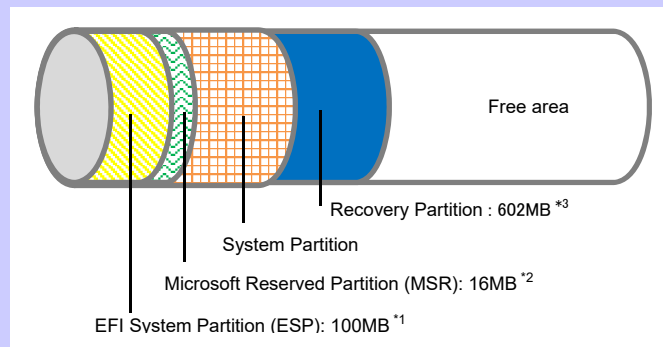
#### Tips

When creating a partition, Windows OS creates the following partitions at the hard disk drive

- EFI System Partition (ESP) : 100MB \*1
- Microsoft Reserved Partition (MSR) : 16MB \*2
- Recovery Partition : 602MB \*3

For example, when 61,440MB is specified for partition size, the area available free area is calculated as follows:

$$61,440\text{MB} - (100\text{MB} + 16\text{MB} + 602\text{MB}) = 60,722\text{MB}$$



\*1 May be 300MB in size depending on hard disk drive type.

\*2 MSR is not displayed on **Disk Management**.

\*3 Partition size differs according to used OS installation media.

If you install by Backup DVD-ROM, the partition is created at 602MB.

### Windows Server 2022 Hyper-V support

— — OS

Refer to the following web site for information related to Windows Server 2022 Hyper-V.

<https://www.58support.nec.co.jp/global/download/w2022/hyper-v/hyper-v-ws2022.html>

### Using BitLocker

— — OS

If using BitLocker, note the following.

- Be sure to keep the recovery password secure. Do not keep it near a server running BitLocker.

#### Important

If the recovery password is not entered, the OS cannot be started, and the content of the partition encrypted by BitLocker cannot be referenced any more. The recovery password might be required at startup of the OS after the following:

- Replacement of motherboard
- Change of BIOS setting
- Initialization of trusted platform module (TPM) \*

\* Depending on your system, it may not be supported.  
Refer to the Instruction Manuals about hardware.

- To reinstall the operating system into a partition that is encrypted with BitLocker, delete the BitLocker-encrypted partition prior to reinstallation.

Support for NIC teaming in Windows Server 2022			
—	—	OS	<p>The NIC teaming feature, which used to be provided by network interface card (NIC) vendors, is built into Windows Server 2022. In Windows Server 2022, this feature is also called "load balancing and failover (LBFO)".</p> <p>Refer to <i>Chapter 1 (3.6 Setup of Windows Server 2022 NIC Teaming (LBFO))</i> and specify any required settings.</p>



---

## 3.2 Manual Installation

---

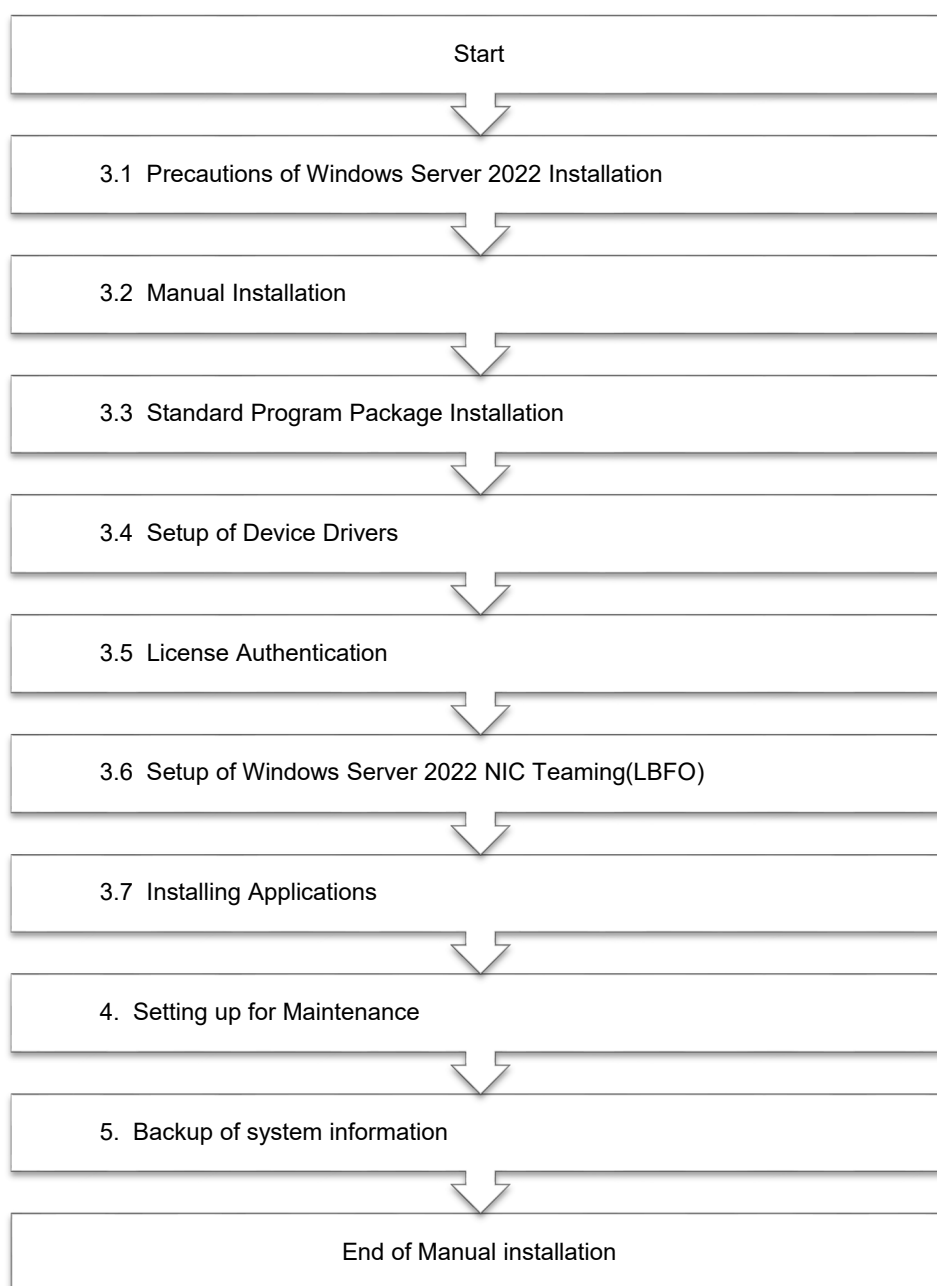
This section describes how to install Windows Server 2022 with Manual option.

**Important** | Disconnect hard disk drives from the RAID controller that is not to be setup.

**Note** | "Manual Installation" installs OS without EXPRESSBUILDER.

### 3.2.1 Setup flow

---



### 3.2.2 Requirements for Setup

---

Prepare the following media and instruction manuals before starting setup.

- Either of the following OS installation media
  - **NEC operating system installation media** (hereafter referred to as *Backup DVD-ROM*)
  - **Microsoft operating system installation media** (hereafter referred to as *Windows Server 2022 DVD-ROM*)
- Starter Pack
  - **Starter Pack DVD** (Optional or downloading from our website)
    - The Starter Pack which supports Windows Server 2022 is "S8.10-010.01" or later.  
Download it from Web site.

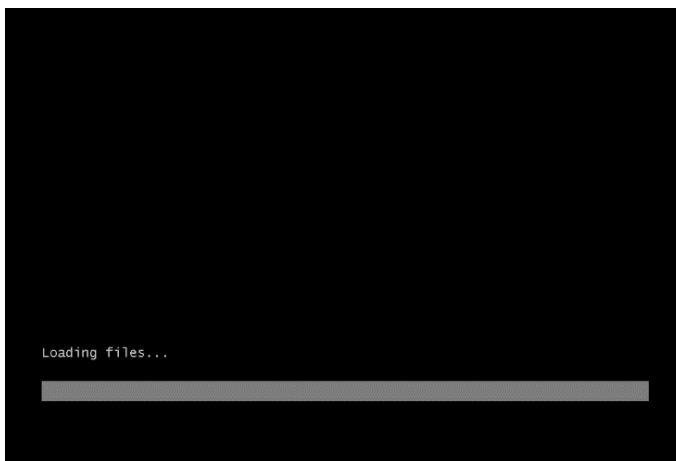
### 3.2.3 Installation procedure

---

**Note**

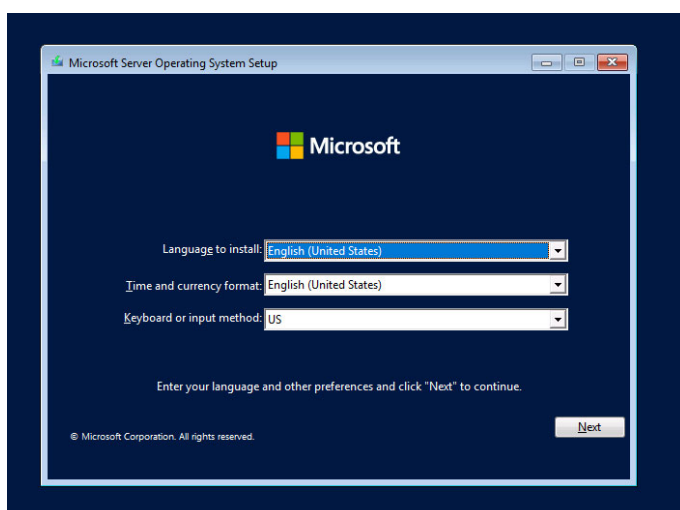
Read the precautions in *Chapter 1 (3.1 Precautions of Windows Server 2022 Installation)* in advance.

1. Turn on peripherals (such as a display), and then turn on the server.  
Insert OS installation media into the drive.
2. To run EXPRESSBUILDER, press <F11> key during POST.  
On the **One-Time Boot Menu**, select the optical disk drive in which the OS installation media was inserted.
3. The system starts from the OS installation media  
The message "Press any key to boot from CD or DVD..." is displayed on the upper of the screen.  
Press the <Enter> key to start from the media.

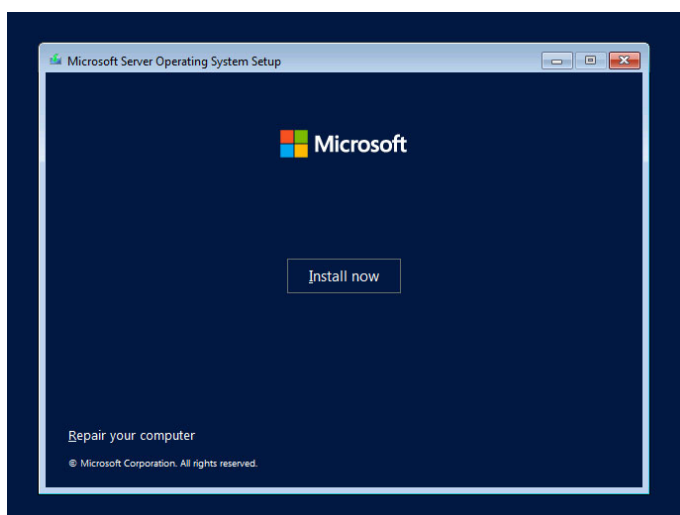
**Note**

If the Windows Setup screen (the screen in the next step) does not display, the <Enter> key was not properly pressed. Turn the system power on again, and then start again.

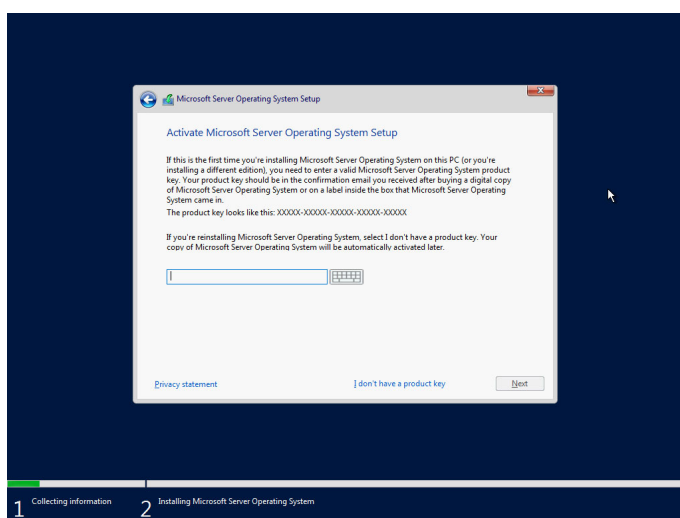
4. Click **Next**.



5. Click **Install now**.



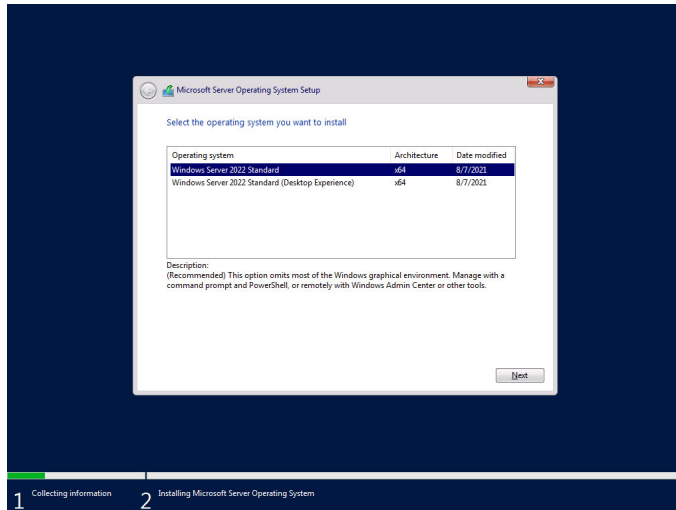
6. Type the product key, and then click **Next**.



### Tips

If you are using Backup DVD-ROM, this screen does not appear.

7. Choose an operating system you want to install and click **Next**.



Options are displayed depending on the installation media you are using.

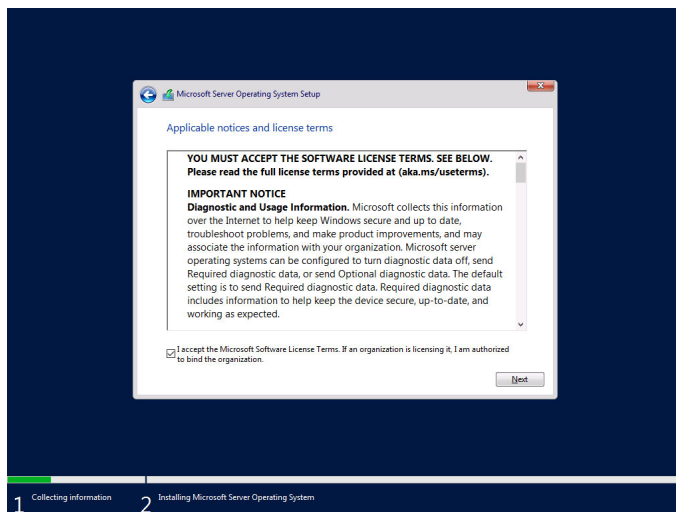
#### Tips

Read the message of the screen, and then choose an installation option.

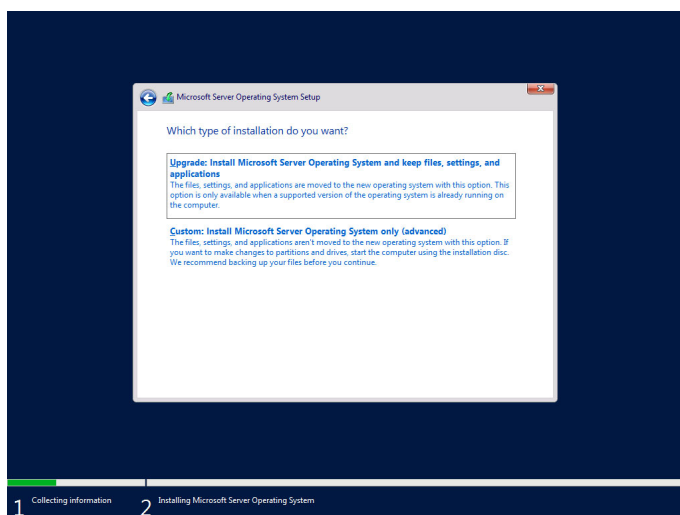
- Windows Server 2022 Standard or Windows Server 2022 Datacenter  
→ Described as “Server Core” by this manual
- Windows Server 2022 Standard (Desktop Experience) or Windows Server 2022 Datacenter (Desktop Experience)  
→ Described as “Desktop Experience” by this manual

8. Read the license terms carefully.

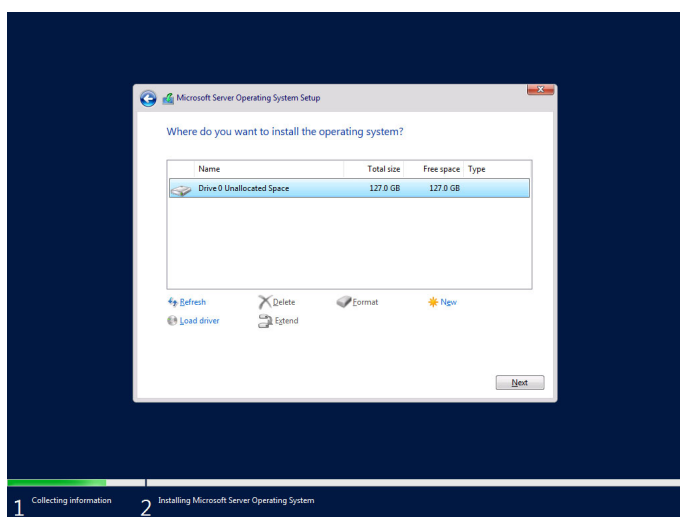
If you agree, check **I accept the Microsoft Software License Terms** and click **Next**.



9. Select **Custom: Install Microsoft Server Operating System only (advanced)**.



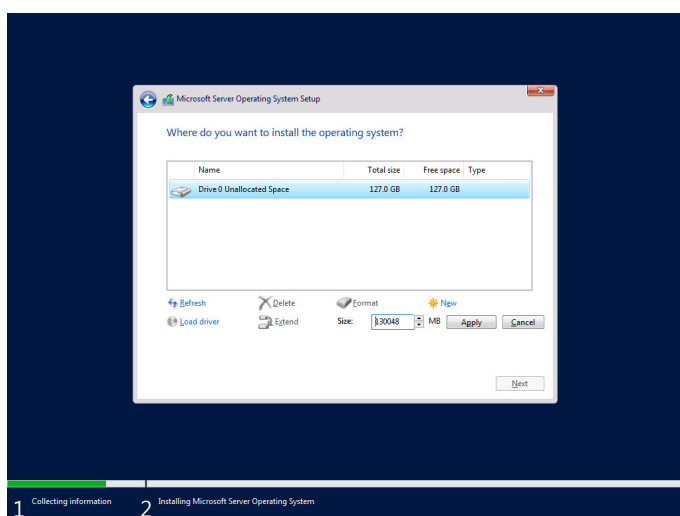
10. Click **New**.



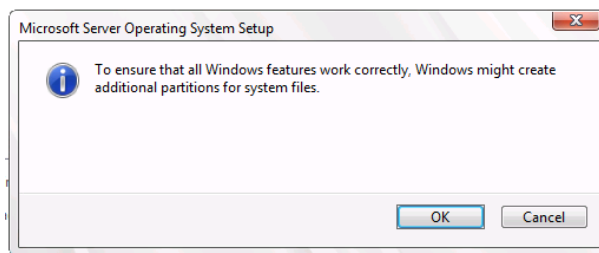
#### Tips

If **New** is not displayed on the screen, click **Drive options (advanced)**.

11. Specify the partition size in the text box, and then click **Apply**.



When the following window appears, click **OK**.



#### Note

After beginning the installation of Windows, a recovery partition is created automatically behind the system partition. The system partition can not be extended because there is no unallocated area behind the system partition. Install Windows OS within sufficient partition size.

#### Tips

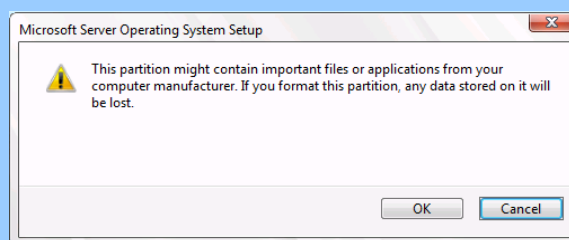
When creating a partition, the OS creates the following partitions at top of the hard disk drive.

- EFI System Partition (ESP)
- Microsoft Reserved Partition (MSR)

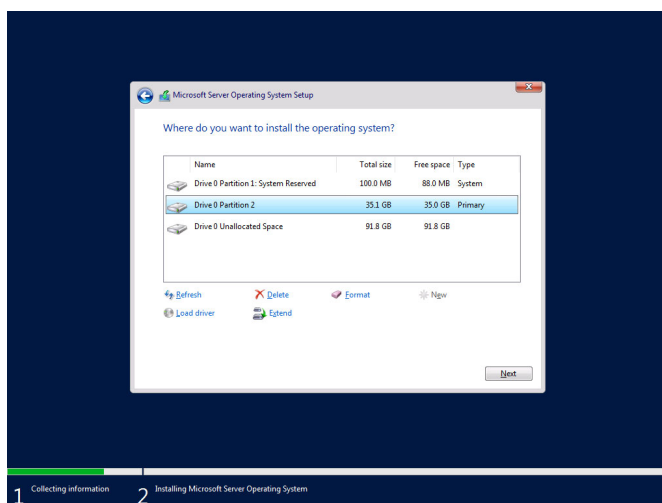
12. Select the partition created in step 11, and then click **Format**.

#### Important

When the following screen appears, read the message and click [OK]. Carefully select the partition to be formatted because data in the partition will be erased.



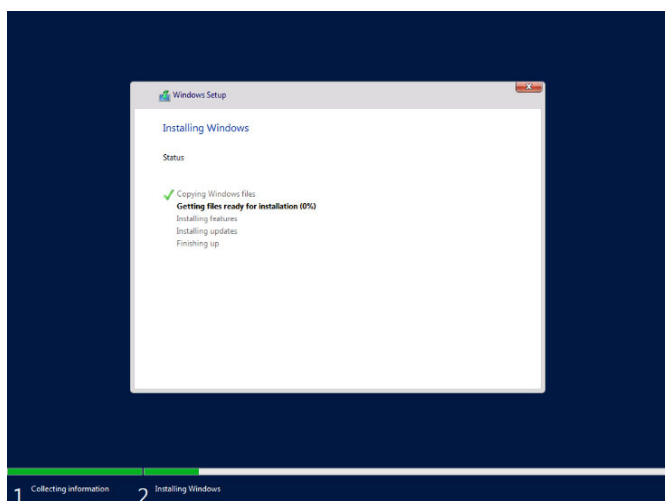
13. Select the created partition, and then click **Next**.



#### Tips

The number of partitions displayed differs depending on the hardware configuration.

When the following message appears, Windows installation starts automatically.



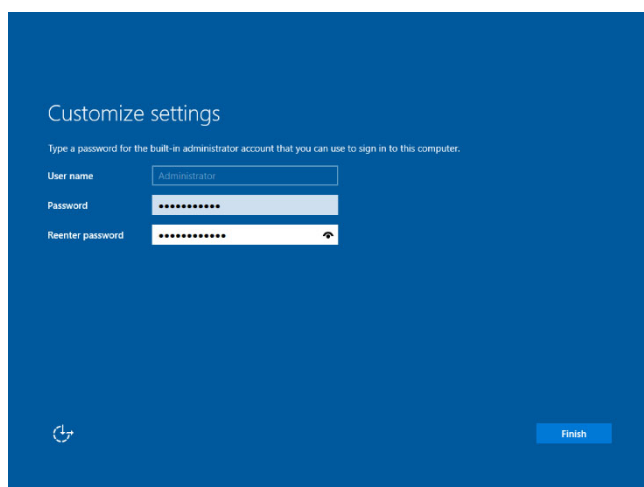
The server will automatically restart after Windows Server 2022 is installed.

You will proceed to Windows setup after restart.

14. Set user settings according to operating system chosen in step 9.

### Desktop Experience

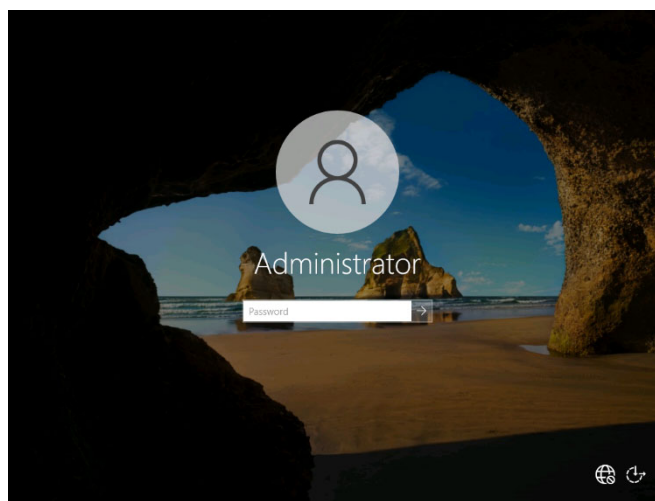
Type a password and click **Finish**.



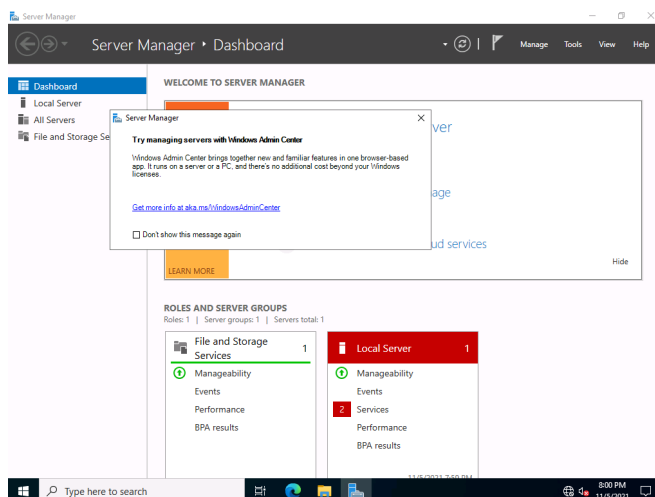
Press <Ctrl> + <Alt> + <Delete> keys to unlock.



Enter the password and press <Enter> key.



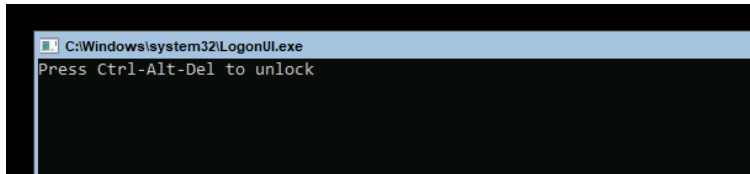
Windows Server 2022 starts.



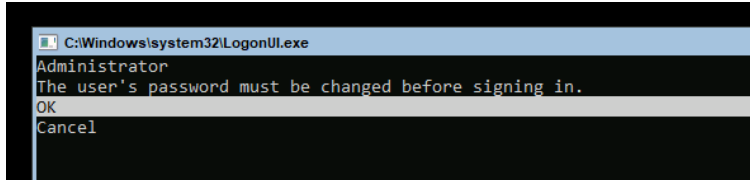


## Server Core

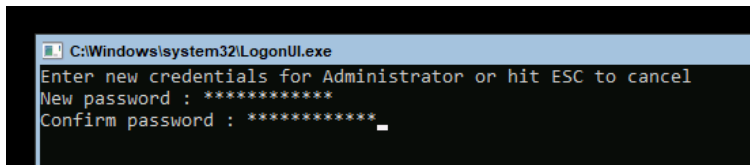
Press <Ctrl> + <Alt> + <Delete> keys to unlock.



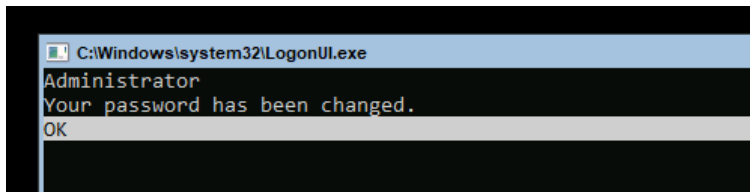
The password is needed to change. Choose **OK** and press <Enter> key.



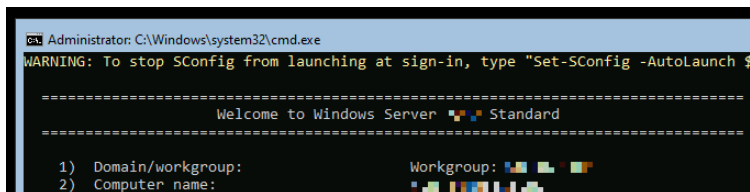
Enter a new password and press <Enter> key.



Choose **OK** and press <Enter> key after the following message is displayed.



Windows Server 2022 starts.



15. See *Chapter 1 (3.3 Standard Program Package Installation)* to install SPP.
16. Install drivers and specify detailed settings according to *Chapter 1 (3.4 Setup of Device Drivers)*.
17. Confirm if Windows is activated according to *Chapter 1 (3.5 License Authentication)*.
18. See *Chapter 1 (3.6 Setup of Windows Server 2022 NIC Teaming (LBFO))* to setup a team as needed.
19. Install the applications as needed according to *Chapter 1 (3.7 Installing Applications)*.
20. Set the other OS settings according to *Chapter 1 (4. Setting up for Maintenance)*.
21. See *Chapter 1 (5. Backup of system information)* to back up the system.

The Windows installation with Manual Installation is now complete.

## 3.3 Standard Program Package Installation

Standard Program Package (SPP) contains drivers customized for this server.

Make sure to install Standard Program Package before running the server system.

System reboot is required after applying Standard Program Package.

This program can apply using iLO remote console and iLO virtual media.

### Important

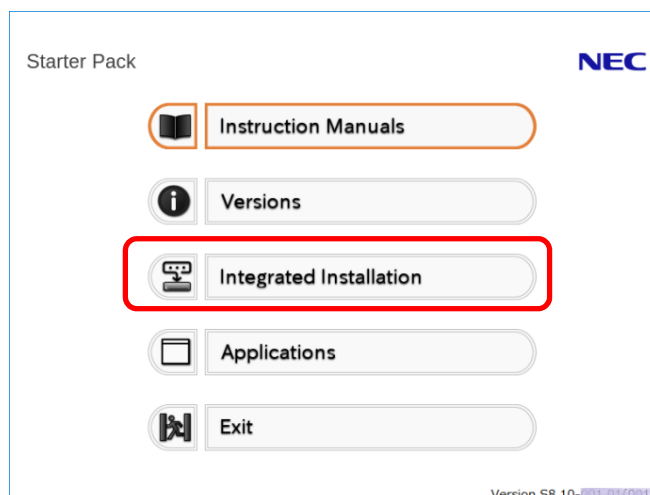
- Make sure to update firmware by booting "Starter Pack DVD" before applying Standard Program Package. If you mistake procedure, the system may not start.
- When you use these options, refer to the following procedure to install these drivers individually from "Starter Pack DVD" before installing SPP. SPP may be stopped with error if you do not install the driver beforehand.

When N8103-189/190/191/192/193/194/195/201/237/238 is installed to the server

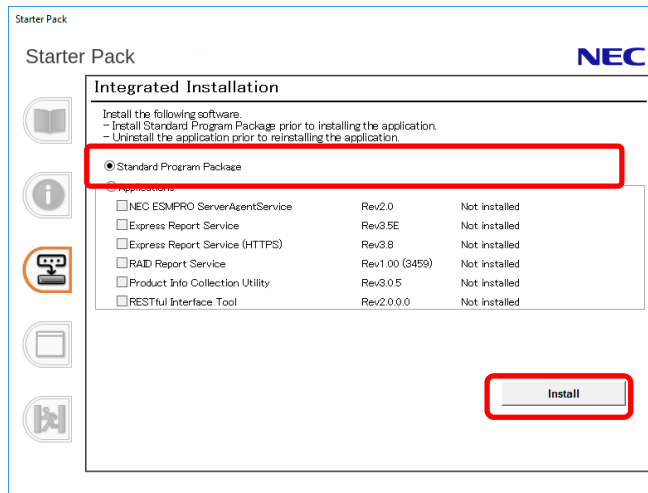
When the RAID controller is installed to the server,  
**\\packages\lcp047413.exe** on the DVD to install the driver.  
After that, restart the server.

### 3.3.1 Installing Standard Program Package on Desktop Experience

1. Sign-in to the Windows with an Administrators privilege.
2. Set the Starter Pack DVD to the drive.
3. Run the **start\_up.bat** under the root folder on DVD.
4. Click **Integrated Installation** on the menu.

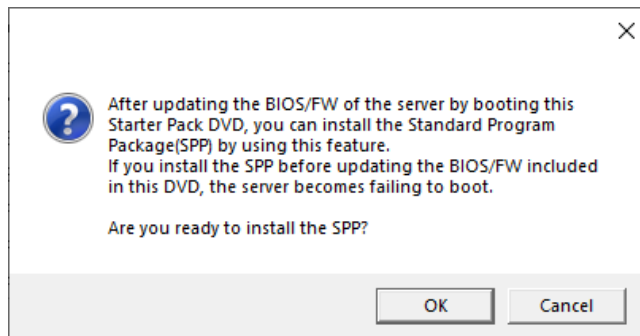


5. Choose **Standard Program Package** on the following screen, and then click **Install**.



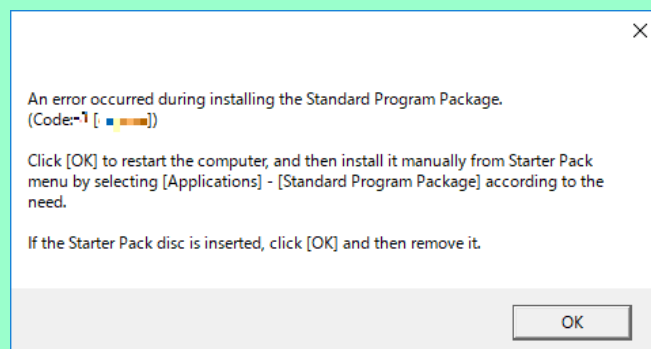
6. If you had updated firmware beforehand, click **OK** to start the installation of Standard Program Package.

Wait until installation completes (about 5 to 15 minutes).



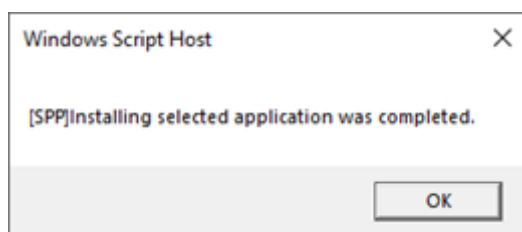
#### Note

- If the following message displayed during installing the Standard Program Package, reboot the system and retry Step1-6.



- iLO may be reset during applying Standard Program Package.  
 If iLO is reset, iLO remote console and iLO virtual media is disconnected.  
 When iLO remote console and iLO virtual media is disconnected, connect again after 30 seconds or more.

7. Click **OK**.



**Note**

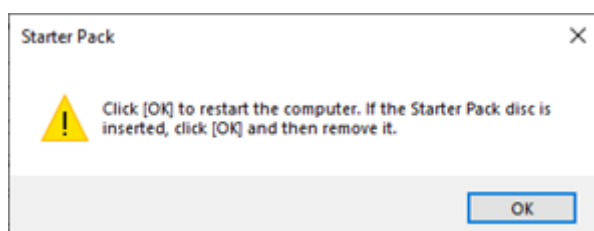
If the following message displayed during installing the Standard Program Package, click **No** to continue process.

Stop running this script?

A script on this page is causing your web browser to run slowly.  
If it continues to run, your computer might become unresponsive.

8. Windows Server 2022 restarts automatically.

Then, remove the Starter Pack DVD.



SPP installation is now complete.

### 3.3.2 Installing Standard Program Package on Server Core

1. Sign-in to the Windows with an Administrators privilege.
2. Set the Starter Pack DVD to the drive.
3. From the command prompt, type the following command.  
In the example below, the optical disk drive is the D drive.

**cd /d D:\software\010\win\seamless**

```
C:\Users\administrator>cd /d D:\software\010\win\seamless
```

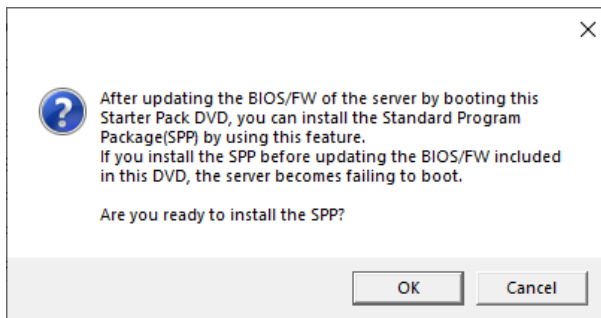
4. Type the following command, and then press <Enter> key.

**instcmd.vbs spp /s**

```
D:\software\010\win\seamless >instcmd.vbs spp /s
```

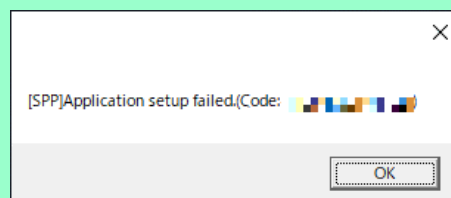
5. If you had updated firmware beforehand, click **OK** to start the installation of Standard Program Package.

Wait until installation completes (about 5 to 15 minutes).



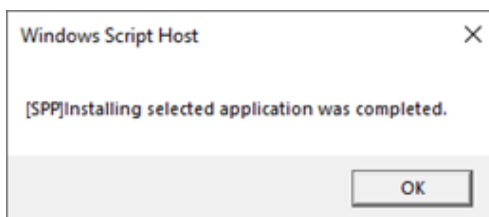
**Note**

- If the following message displayed during installing the Standard Program Package, reboot the system and retry Step1-5.



- iLO may be reset during applying Standard Program Package.  
If iLO is reset, iLO remote console and iLO virtual media is disconnected.  
When iLO remote console and iLO virtual media is disconnected, connect again after 30 seconds or more.

6. Click **OK**.



7. After removing the Starter Pack DVD, restart Windows Server 2022 manually.

SPP installation is now complete.

---

## 3.4 Setup of Device Drivers

---

Install and set up device drivers provided for the standard configuration of the server.

For details regarding the installation and setup of a driver for an optional device, refer to the manual supplied with the optional device.

### 3.4.1 Installing the LAN drivers

---

#### (1) LAN drivers

The drivers are installed by Standard Program Package.

**Important**

**Wake On LAN (WOL) is supported by N8104-207 only.**  
**Wake On LAN is available after installing the LAN driver.**  
**BIOS settings, check Maintenance Guide.**

**Note**

- To change the LAN driver settings, sign in to the system from a local console using an administrator's account. Remotely changing the settings by using the operating system's remote desktop feature is not supported.
- Choose the **Internet Protocol (TCP/IP)** check box when specifying an IP address.

#### (2) Optional LAN board

This server supports the following optional LAN boards.

R120i-1M R120i-2M	N8104-207/210/211
----------------------	-------------------

If you install the LAN boards after installing Standard Program Package, install Standard Program Package again according to *Chapter 1 (3.3 Standard Program Package Installation)*.

### (3) Network adapter name

After installing the LAN drivers, the following network adapter names will be displayed on the Device Manager.

- **If connecting with an optional LAN board:**

N8104-207	Marvell FastLinQ Ethernet 10Gb 2-port BaseT QL41132HQRJ OCP3 Adapter #xx(*1)
N8104-210	Marvell FastLinQ Ethernet 10Gb 2-port BaseT QL41132HLRJ Adapter #xx(*1)
N8104-211	Marvell FastLinQ Ethernet 10/25Gb 2-port SFP28 QL41232HLCU Adapter #xx(*1)

\*1: If there are adapters with the same name, a different identification number will be assigned to xx.

**Tips**

The ID for N8104-207/210/211 might be a number of two or more digits.  
This is due to the LAN driver specifications and not an error.  
This number cannot be changed.

**Tips**

The network adapter name displayed in the device manager may be different from the one listed above. In this case, the correct network adapter name can be displayed by following the procedure below.

1. Start **Device Manager**.
2. Open **Network Adapters**, right click on the relevant adapter, and select **Uninstall Device**.  
Do not check the **Delete the driver software of this device** checkbox.
3. Select **Scan hardware change** from **Control**.

## 3.4.2 Setting up LAN drivers

### (1) Setting link speed

The transfer rate and duplex mode of the network adapter must be the same as those of the switching hub. Follow the procedure below to specify the transfer rate and duplex mode.

1. Open the **Device Manager**.
2. Expand **Network Adapters**, and then double-click the name of the network adapter you want to configure.  
The properties of the network adapter will be displayed.
3. On the **Advanced** tab, set the **Speed & Duplex** values to the same as those of the switching hub.

**Tips**

When using the N8104-207/210/211, **Link control** set to **Driver controlled**.  
\*When **Link control** is **Preboot controlled**, link speed setting of BIOS take a priority.

4. Click **OK** in the **Network Adapter Properties** dialog box.
5. Restart the system.

The link speed setting is now complete.

## (2) Configuring Flow Control

Flow Control is a feature to stop transmitting frames temporarily by sending a pause frame to the destination device when the receive buffer is about to run out. When it receives a pause frame, it regulates the transmission.

Configure the Flow Control following the procedure below

### Tips

The settings of Flow Control of the network adapter should match those of the destination device. For example, if Flow Control in the destination device is set as Enabled, that in the network adapter should be set as Enabled.

1. Open the **Device Manager**.
2. Expand **Network Adapters**, and then double-click the name of the network adapter you want to configure.  
The properties of the network adapter will be displayed.
3. Open **Advanced** tab, click **Flow Control** to show Value.
4. The Value can be changed by the down-arrow button.
5. Click **OK**, and then restart the system.

The Flow Control setting is now complete.

### 3.4.3 Using Graphics Accelerator

---

For installation with the Manual installation, the drivers are installed by Standard Program Package.

If you install the Graphics Accelerator driver after installing Standard Program Package, install Standard Program Package again according to *Chapter 1 (3.3 Standard Program Package Installation)*.

### 3.4.4 Using RAID Controller (N8103-189/190/191/192/193/194/195/201/237/238)

---

For installation with the Manual installation, the drivers are installed by Standard Program Package.

If you install the RAID controller (N8103-189/190/191/192/193/194/195/201/237/238) after installing Standard Program Package, install Standard Program Package again according to *Chapter 1 (3.3 Standard Program Package Installation)*.

### 3.4.5 Using 480GB SSD Adapter for OS Boot (N8103-239)

---

The driver for the 480GB SSD Adapter for OS Boot (N8103-239) is automatically installed by Windows Plug-and-Play.



---

## 3.5 License Authentication

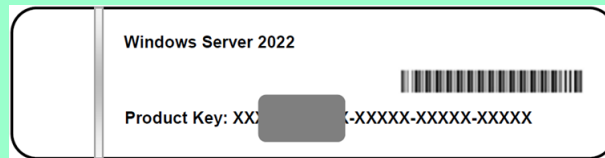
---

To use Windows Server 2022, you need finish the license authentication procedure.

Confirm if the license is authenticated or not in the next step.

### Note

To activate Windows Server 2022, enter the Product Key written on the COA (Certificate of Authenticity) label. The COA label of Windows Server 2022 is attached to the operating system media package.

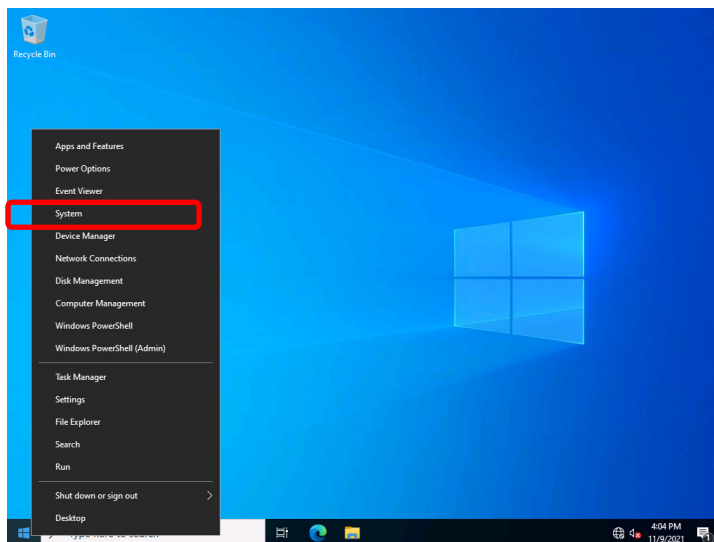


---

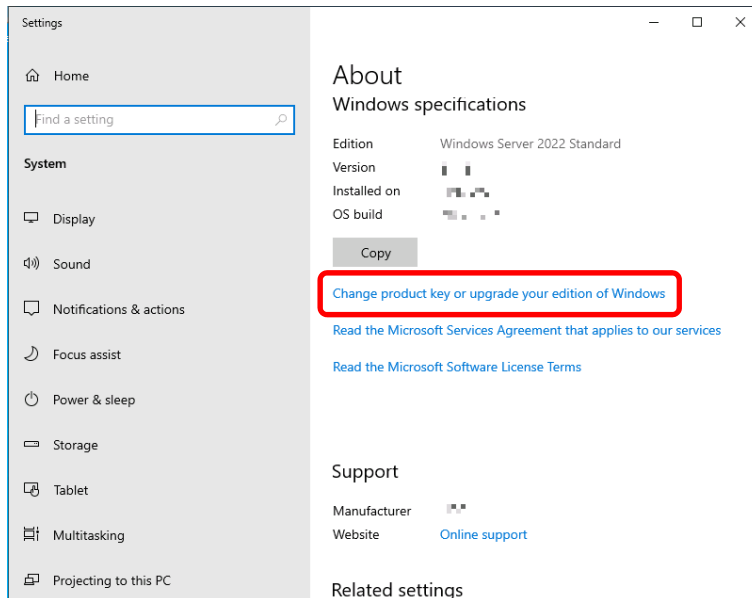
### 3.5.1 Desktop Experience

---

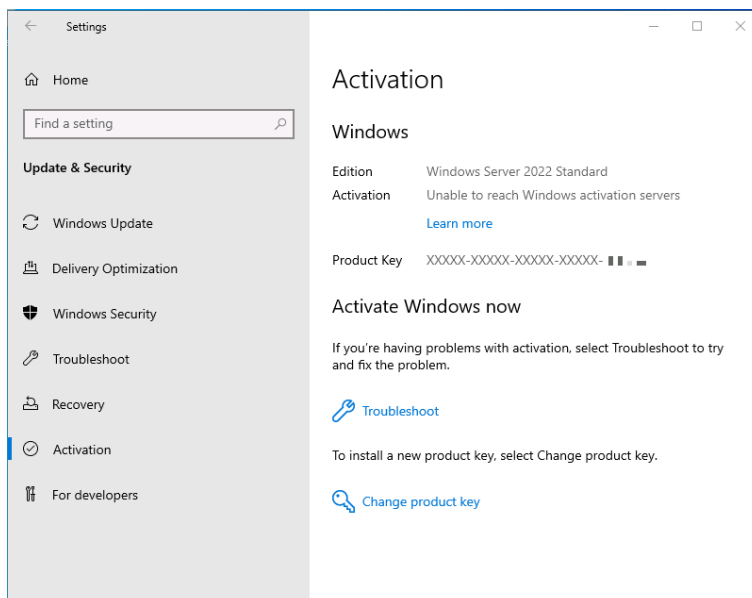
1. Right-click the lower left of the screen, and click **System** from the menu displayed.



2. Click **Change product key or upgrade your edition of Windows**.



3. Perform license authentication.



**When connected to the Internet:**

Click **Change product key**.

Complete license authentication process according to the message.

**When not connected to the Internet:**

Go to Step 4.

4. Perform the license authentication by phone.

Go to the appropriate step according to OS installation media you are using.

**Backup DVD-ROM:**

Go to Step 5.

**Windows Server 2022 DVD-ROM:**

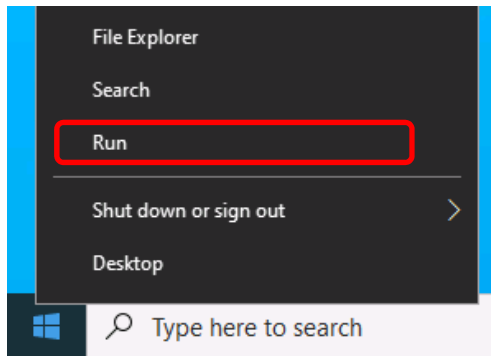
Product key is already entered:

Go to Step 8.

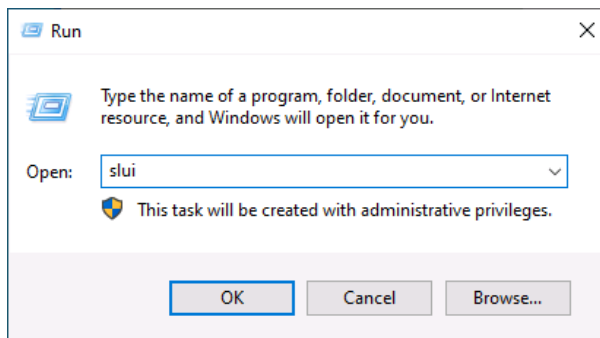
Product key is not entered:

Go to Step 5.

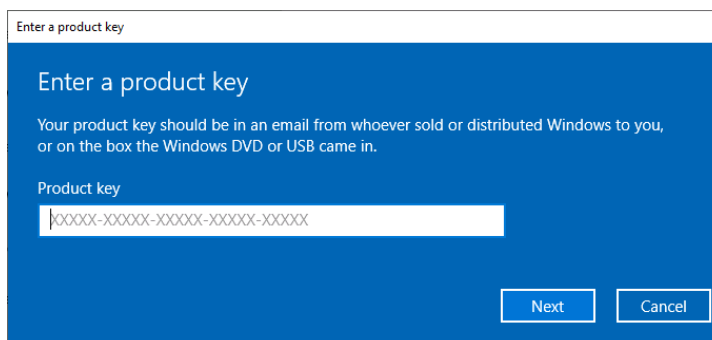
5. Right-click the lower left of the screen, and click **Run** from the menu displayed.



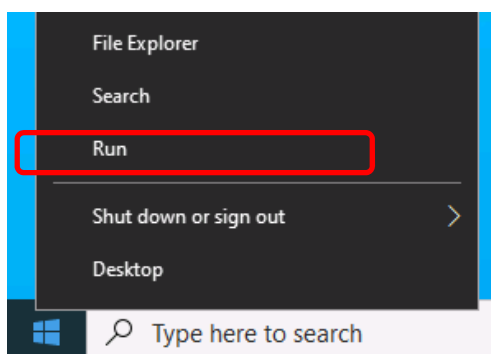
6. Type "slui", and then press <Enter> key.



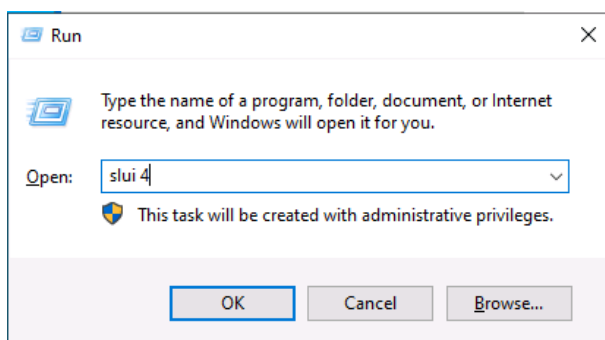
7. Change the product key. On the next screen, type the product key.



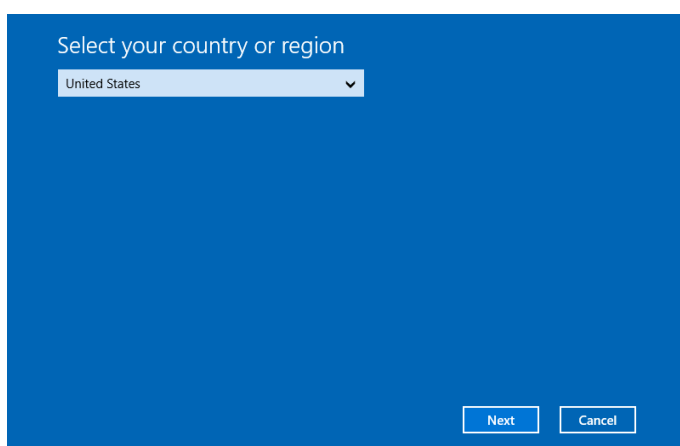
8. Right-click the lower left of the screen, and click **Run** from the menu displayed.



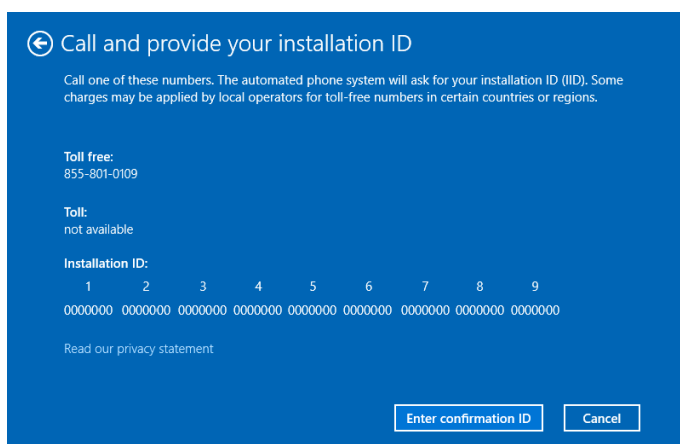
9. Type "slui 4", and then press <Enter> key.



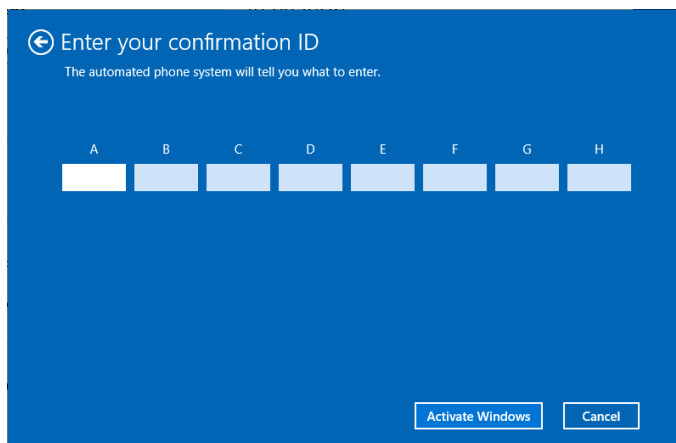
10. On the next screen, choose your country, and then click **Next**.



Get the installation ID required for license activation.



11. Call the Microsoft license activation hotline and then tell your installation ID.  
Type the confirmation ID, and then click **Activate Windows**.



The authentication is now complete.

### 3.5.2 Server Core

1. Confirm if your license is activated.

At the command prompt, type the following command, and then press <Enter> key.

```
C:\Users¥administrator>slmgr -dli
```

When license authentication is required, go to the next step.

When your license is already authenticated, you can skip the next and the subsequent steps.

2. Change the product key.

#### Using Backup DVD-ROM:

Type the following command, and then press <Enter> key.

```
C:\Users¥administrator>slmgr -ipk <Product key on COA label>
```

#### Using Windows Server 2022 DVD-ROM:

You do not need to change the product key.

Go to the next step

3. Perform license authentication.

#### The server connects to the Internet:

License authentication is performed via the Internet.

Type the following command, and then press <Enter> key.

```
C:\Users¥administrator>slmgr -ato
```

This completes authentication.

**The server does not connect to the Internet:**

Use telephone for license authentication.

Type the following command to get an Install ID for authentication, and then press <Enter> key.

```
C:\Users\administrator>slmgr -dti
```

Acquire the installation ID required for license activation.

Refer to the file %systemroot%\system32\sppui\phone.inf to confirm the telephone number of Microsoft Licensing Center.

Call Microsoft Licensing Center and tell them your Install ID.

Type the confirmation ID you have received in the following command line, and then press <Enter> key.

```
C:\Users\administrator>slmgr -atp <Confirmation ID>
```

The authentication is now complete.

---

## 3.6 Setup of Windows Server 2022 NIC Teaming (LBFO)

---

Set up the network adapter teaming feature as shown below.

### 3.6.1 Launching the NIC teaming setup tool

---

1. Launch **Server Manager**.
2. Select **Local Server**.
3. In the **Properties** window, click **Enable** or **Disable** for **NIC teaming**.

The NIC teaming setup tool will launch.

#### Tips

The NIC teaming setup tool can also be launched by opening the **Run** dialog box, typing "`lbfoadmin /server .`", and then pressing <Enter> key.

### 3.6.2 Creating a team

---

Create a team by using the NIC teaming setup tool.

1. In the **Servers** section, select the name of the server to set up.  
If there is only one server connected, the name of the server is selected automatically.
2. In the **Teams** section, under **Tasks**, select **New Team**. The **New Team** wizard then starts.
3. Type the name of the team to create, and then select the network adapter to include in the team from the **Member adapters** list.
4. Click **Additional properties**.
5. Specify the required settings, and then click **OK**.

#### Teaming mode

<b>Static Teaming</b>	Configures static aggregation between the NIC and switches.
<b>Switch Independent</b>	Configures teaming on the NIC side without depending on the switch settings.
<b>LACP</b>	Configures dynamic aggregation between the NIC and switches.

#### Load balancing mode

<b>Address Hash</b>	Distributes the load based on IP addresses and port numbers.
<b>Hyper-V Port</b>	Distributes the load to each of the virtual switch ports used by the virtual machines.
<b>Dynamic</b>	<ul style="list-style-type: none"><li>• Distributes the load based on IP addresses and port numbers in sending.</li><li>• Distributes the load same to "Hyper-V Port" in receiving.</li></ul>

#### Standby adapter

Select one adapter to be set to standby mode from the adapters in the team.

Setting all adapters to active mode is also possible.

#### Primary team interface

Any VLAN ID can be specified for the primary team interface.

### 3.6.3 Removing a team

Remove a team by using the NIC teaming setup tool.

1. In the **Servers** section, select the name of the server to set up.  
If there is only one server connected, the name of the server is selected automatically.
2. In the Teams section, select the team to remove.
3. In the Teams section, under **Tasks**, select **Delete**.
4. The message box to confirm appears, then click Delete team.

### 3.6.4 Notes and restrictions

- NIC teaming on a guest OS is not supported.
- Teaming of virtual NICs on the host OS is not supported in the Hyper-V environment.
- When STP (Spanning Tree Protocol) is enabled on network switch ports to which network adapters of the team are connected, network communications may be disrupted. Disable STP, or configure "PortFast" or "EdgePort" to the ports.  
\* About setting the network switch of the connection destination, see the manual of the network switch.
- All NICs in the team must be connected to the same subnet.
- Teaming of different speed NICs is not supported.
- Teaming of different vendor's NICs is not supported.
- When teaming is configured in a Network Load Balancing (NLB) environment, you should select multicast mode on the NLB cluster.
- When a team is removed, the following error message may be logged in the system event log.  
You can safely ignore this error message.

Level	Error
Source	Microsoft-Windows-NDIS
Event ID	10317
Task Category	PnP
Message	Miniport Microsoft Network Adapter Multiplexor Driver, {xxxxxxx-xxxx-xxxx-xxxx-xxxxxxxxxxxx}, had event Network Interface deleted while PNP Device still exists. Note that this event is provided for informational purpose and might not be an error always (Eg: In case of vSwitch which was recently un-installed or a LBFO team was removed)

- In a Windows Server Failover Cluster environment, heartbeat interruption or failover may occur if you configure Active-Standby teaming. To avoid this, you should configure multiple NICs in Active Mode in a team so that all the NICs do not fail simultaneously.
- In Hyper-V environments, binding a teaming adapter to the virtual switch is deprecated.  
Please use SET(Switch Embedded Teaming) when you use teaming in combination with a virtual switch.

Refer to the following website for the latest information.

<https://www.58support.nec.co.jp/global/download/w2022/index.html>

- [Technical Information] - [NIC Teaming (LBFO)]



## 3.7 Installing Applications

Some applications included in Starter Pack can be installed easily by performing the procedures described below. When installing these applications individually, see *the manual of each applications*. This feature is **only available on Desktop Experience**.

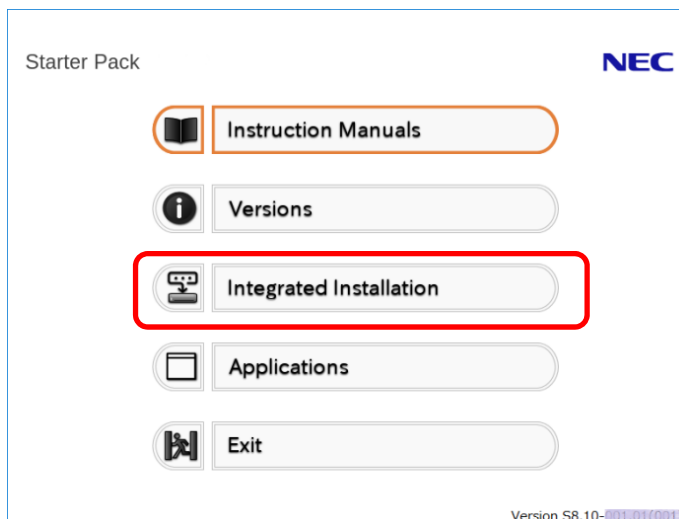
System reboot is required after installing applications.

Application can install using iLO remote console and iLO virtual media.

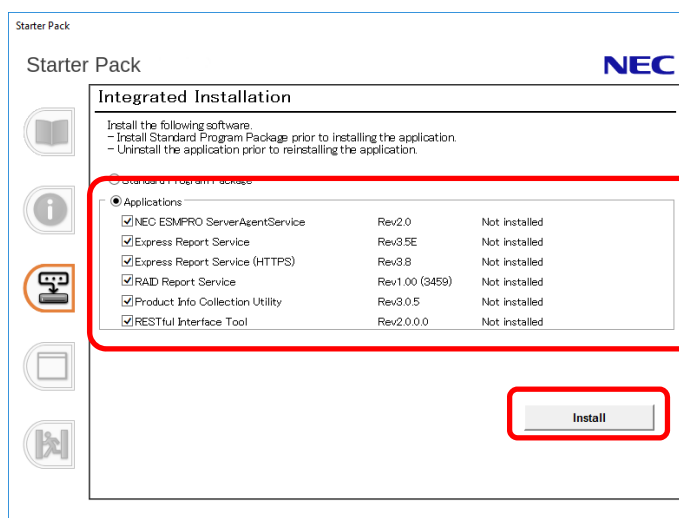
### Tips

This function supports clean installation of applications only. If you re-install installed application, refer to *the manual of each applications*.

1. Sign-in to the Windows with an Administrators privilege.
2. Insert the Starter Pack DVD into the optical disk drive.
3. Run the **start\_up.bat** under the root folder on DVD.
4. Click **Integrated Installation** on the menu.



5. On the following screen, choose the check boxes corresponding to the applications you want to install, and then click **Install**. The chosen applications are automatically installed.



**Note**

- Applications available for installation are chosen by default.
- If your system environment does not satisfy the prerequisite for an application, you cannot install it. For details, see the on-screen information and *the manual of each applications*.
- To collect product information using a device information collection utility, RESTful interface tool needs to be installed. If it is not installed, some logs required for the maintenance may not be gathered.
- If the following message displayed during installing applications, click **No** to continue process.

Stop running this script?

A script on this page is causing your web browser to run slowly.  
If it continues to run, your computer might become unresponsive.

6. When a message indicating restart appears, click **OK** to restart the server.
7. See *the manual of each applications* to install the bundled software or confirm that the software is appropriate to your operating environment.

Now installation of applications is complete.

## 4. Setting up for Maintenance

We recommend setting up the following features for maintenance.

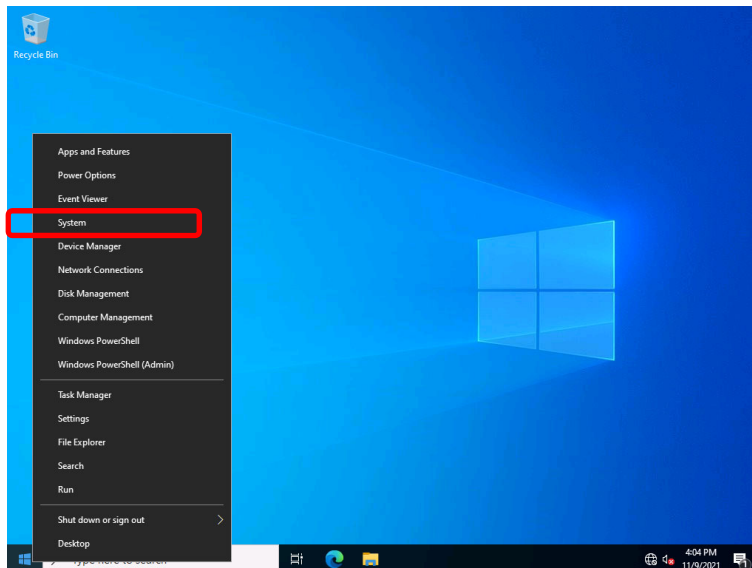
### 4.1 Specifying Memory Dump Settings (Debug Information)

This section explains the procedures for collecting a memory dump (debug information) in the server.

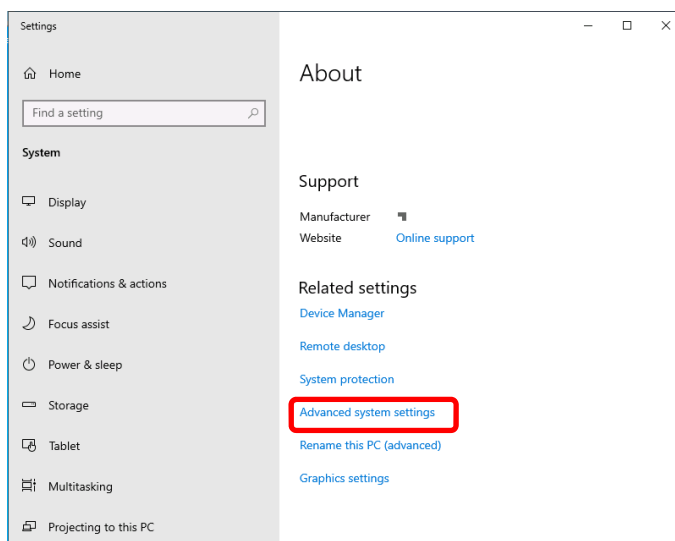
#### Important

When you restart the system to save the memory dump, a message informing you that the system is short of virtual memory might appear. Ignore this message and proceed with the restart. If you reset or restart the system again, the memory dump might not be saved normally.

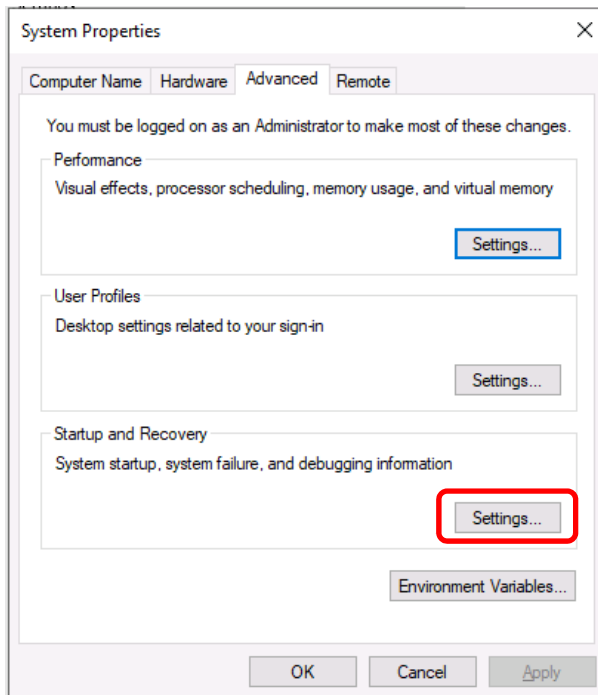
1. Right-click the left bottom of screen, and click **System** from the menu displayed.



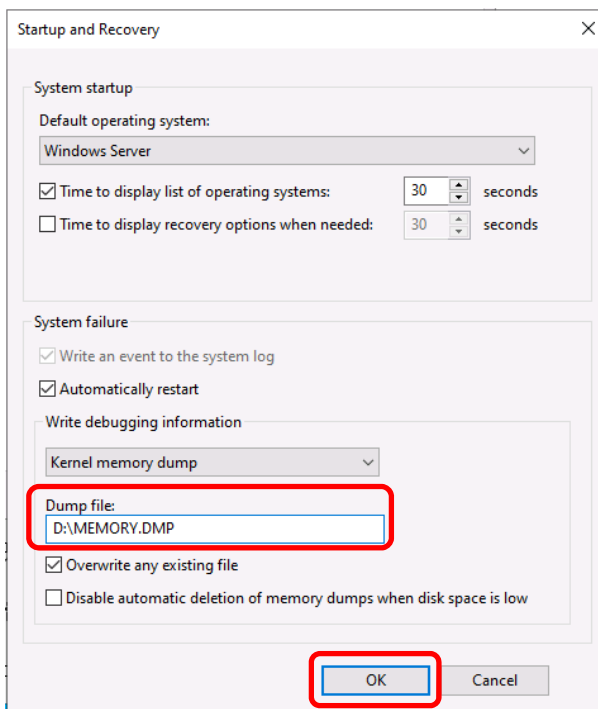
2. Click **Advanced system settings**.



3. In **Startup and Recovery**, click **Settings....**



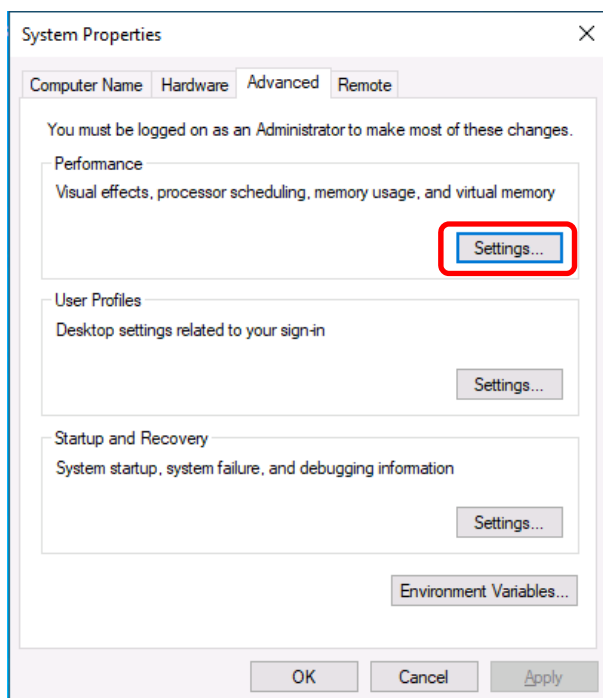
4. Type a file name to store the debug information in the **Dump file** text box, and then click **OK**.



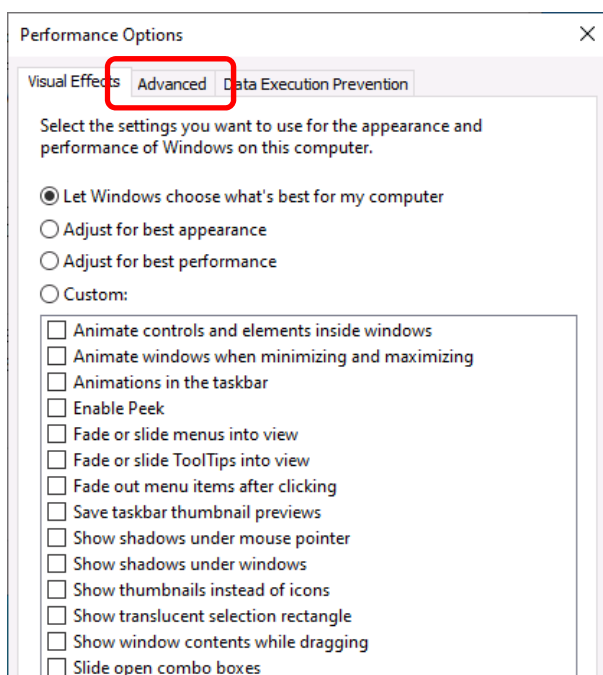
Note the following when specifying a dump file:

- We recommend specifying Kernel memory dump for Write debugging information.
- Specify a drive that has free space of "installed memory size + 400 MB" ("installed memory size + 1,800 MB" when the installed memory size is 4TB or more) or more.
- The size of the debug information (memory dump) changes if DIMM is added. Make sure that the free space of the drive to store the debug information (memory dump) is sufficient.

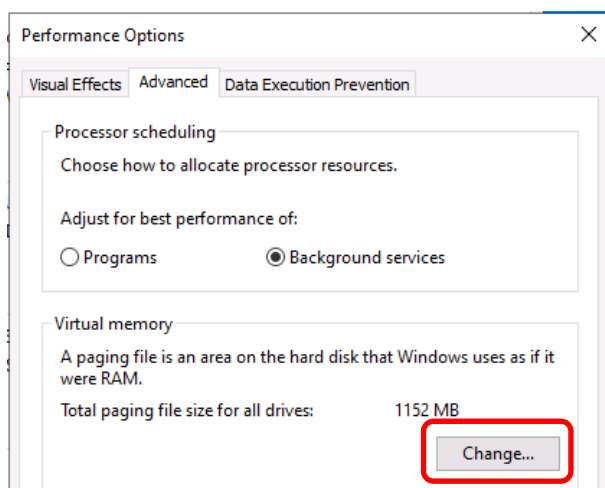
5. In **Performance**, click **Settings**.



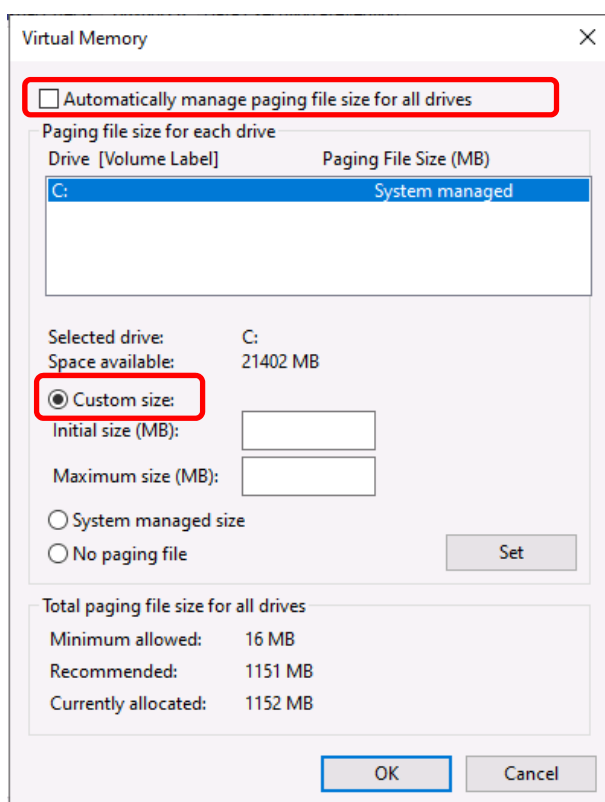
6. Click the **Advanced** tab on the **Performance Options** window.



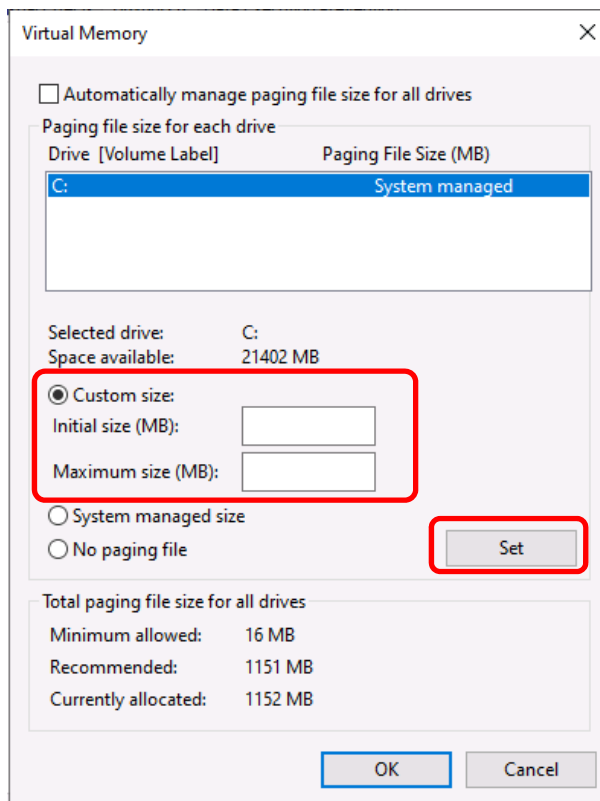
7. In **Virtual memory**, click **Change....**



8. Clear the **Automatically manage paging file size for all drives** check box, and then click **Custom size**.



9. In **Paging file size for each drive**, enter the value equal or larger than the recommended value for **Initial size**, and the value larger than **Initial size** for **Maximum size**, and then click **Set**.



Note the following when specifying a paging file size:

- The paging file is used to collect debug information (dump file). The boot volume must have a paging file of its initial size ("total size of physical memory" + 400 MB (total size of physical memory + 1,800MB when the total size is 4 TB or more) is enough to store the dump file. Make sure to specify a sufficient paging file size.
- See "System Partition Size" in *Chapter 1 (3.1 Precautions of Windows Server 2022 Installation)* for recommended value.
- When DIMM is added, re-specify the paging file according to the increased memory size.
- If an error occurs in setting the paging file to a drive exceeding 2TB, close [Virtual memory] and [Performance Options], and then set in the following way.

ex. Setting the paging file in drive C with 4096 MB as Initial size, 8192MB as Maximum size.

1. Start command prompt as Administrator and execute the following command.

```
wmic computersystem set AutomaticManagedPagefile=false
wmic pagefileset delete
```

2. Restart the Windows system.

3. Start command prompt as Administrator and execute the following command.

```
wmic pagefileset create name="C:\pagefile.sys"
wmic pagefileset set InitialSize=4096, MaximumSize=8192
```

4. Restart the Windows system.

10. Click **OK**.

If a message to restart Windows appears, restart the system according to on-screen message.

Specification of the memory dump settings is now complete.

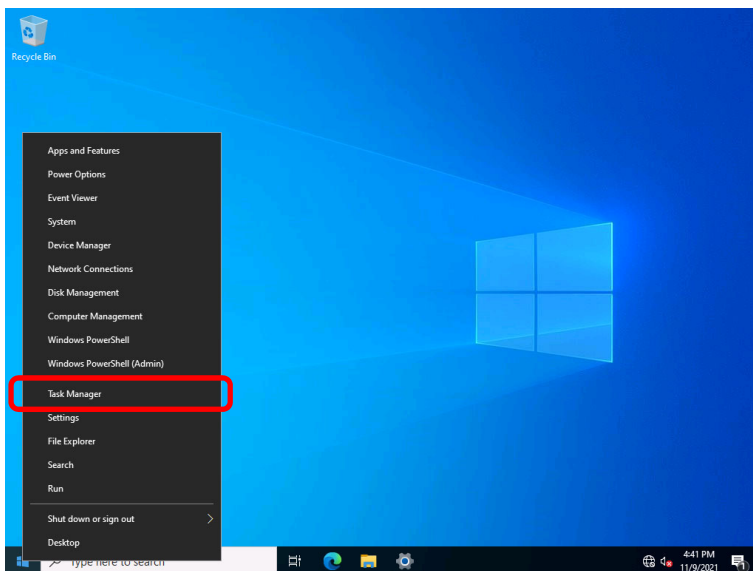


## 4.2 How to Create a User-mode Process Dump File

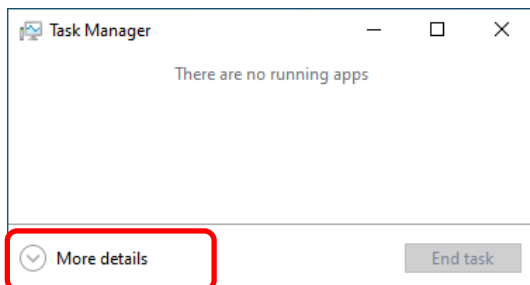
The user-mode process dump file records information when an application error occurs.

If an application error occurs, get user-mode process dump information using the following procedures without closing the pop-up window that reported the error:

1. Right-click an empty area of the taskbar and then click **Task Manager** or press <Ctrl> + <Shift> + <Esc> keys to start Task Manager.



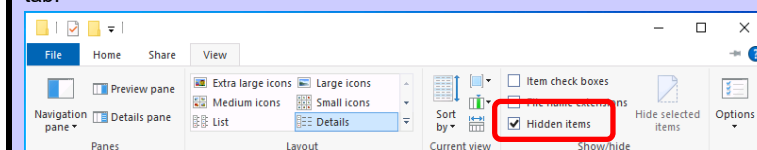
2. Click **More details**.



3. Click the **Processes** tab.
4. Right-click the name of the process that you want to get dump information for, and then click **Create Dump File**.
5. A dump file for the process is created in the following folder:  
**C:\Users(user name)\AppData\Local\Temp**

### Tips

If the folder is not displayed, open Explorer, select **Hidden items** in the **View** tab.



Get the user-mode process dump file from the folder shown in step 5.

---

## 5. Backup of system information

---

After environment building, back up the setting information of the system in advance of any troubles.

- Back up system settings contained in system utility.

See *User's Guide (2. Description on System Utility)* for details of system utility.

- Back up detail information of iLO 5.

See "*iLO 5 User's Guide*" for details of procedure.

---

---

# Maintenance

This chapter explains maintenance of server, and what actions are to be taken in case of trouble when operating this server.

### **1. Failure Information**

Describes how to collect the failure information. See this section in case of a failure.

### **2. Troubleshooting**

Describes how to troubleshoot the server. See this section if you suspect a failure.

### **3. Windows System Recovery**

Describes Windows recovery setup. See this section if the Windows is corrupt.

---

# 1. Failure Information

---

If the server does not work normally, you can collect failure information by using the following way.

The failure information to be described is to be collected only at the request of your sales representative.

**Important**

**Do not reset during dumping memory or restarting the server even if the message of virtual memory shortage appears.**

---

## 1.1 Collecting Event Logs

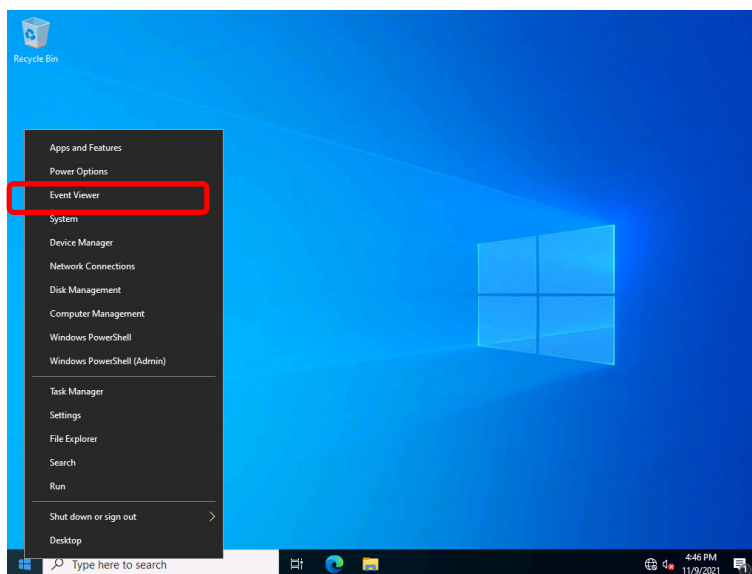
---

To collect the various event logs of the server, follow the steps below.

**Tips**

If a STOP error, system error, or stall occurs, restart the system and then follow the steps below.

1. Right-click the left bottom of screen, and click **Event Viewer** from the menu displayed.

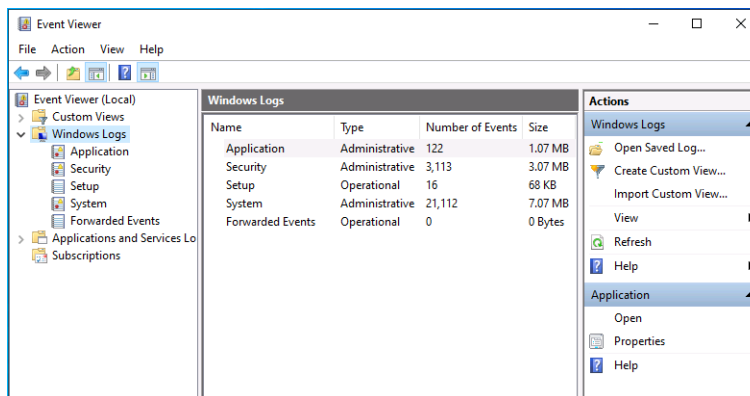


2. Select the type of log in **Windows Logs**.

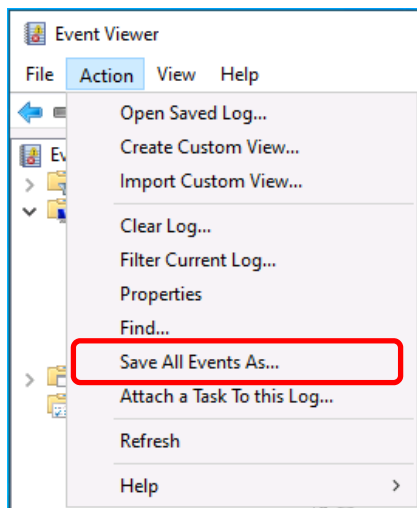
**Application** records events related to running applications.

**Security** records events related to security.

**System** records events that occur in Windows system components.



3. Click **Save All Events As...** from **Action** menu.



4. Type the file name of the archived log in **File name**.
5. Select the type of the log file you want to save in **Save as type**, and then click **Save**.

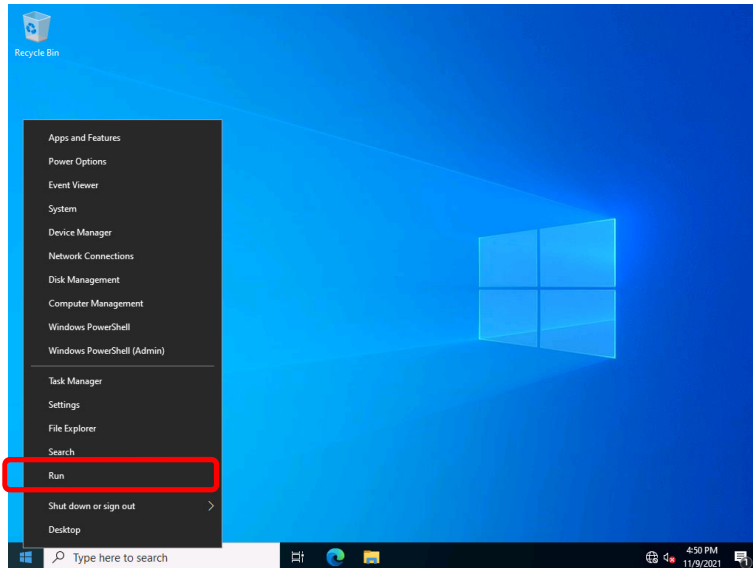
## 1.2 Collecting Configuration Information

This section describes how to collect hardware information or configuration.

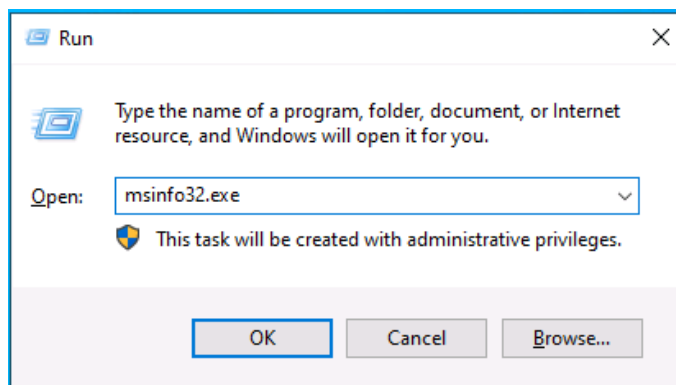
### Tips

If a STOP error, system error, or stall occurs, restart the system and then follow the steps below.

1. Right-click the left bottom of screen, and click **Run** from the menu displayed.



2. Type `msinfo32.exe`, and then press <Enter> key.



System Information starts.

3. Click **Export** from **File** menu.
4. Type a file name to save in **File Name**, and then Click **Save**.

---

## 1.3 Collecting User-Mode Process Dump

---

The user-mode process dump is the failure information related to application errors.

For details, see *Chapter 1 (4.2 How to Create a User-Mode Process Dump File)*.

---

## 1.4 Collecting Memory Dump

---

If an error occurs, the dump file will be saved to get necessary information. You can specify any location for saving the diagnostic information. For details, see *Chapter 1 (4.1 Specifying Memory Dump Settings (Debug Information))*.

Consult with your sales representative before dumping the memory. Dumping the memory while the server is in operating normally will affect the system operation.

**Important**

**Do not reset during dumping memory or resetting the server even if the message of virtual memory shortage appears.**

---

## 2. Troubleshooting

---

If this system does not operate as intended, check it according to the contents of your document before sending it for repair. If an item in the checklist corresponds with a problem you are experiencing, follow the processing instructions. The other contents check Maintenance Guide.

---

## 3. Windows System Recovery

---

Recover the Windows system by using the following instructions if the system does not work normally.

### Note

- After recovering Windows, install drivers and the Starter Pack referring to *Chapter 1 (3.4 Setup of Device Drivers)* and *Chapter1 (3.3 Standard Program Package Installation)*.
- If the Windows system cannot find hard disk drives, you cannot recover the Windows system.

---

### 3.1 Recovery of Windows Server 2022

---

If the Windows does not start normally, you can recover it using the feature of the Windows installation media. To run this feature, start the installation media, and then choose **Repair your computer** in the setup wizard. We recommend that this option is performed by the system administrator.



# Appendix

## 1. List of Windows Event Logs

Shows a list of Windows event logs.

# 1. List of Windows Event Logs

ID	Source	Level	Message (Description)
	Timing when an event is logged		Action

## All Windows OS "System Log"

1	VDS Basic Provider	Error	Unexpected failure. Error code : 32@01000004
	At the time of a USB Device connection		When it's at the time of a USB Device connection, it's no problem.
10	Smart Update Manager System Log	Warning	The description for Event ID 10 from source Smart Update Manager System Log cannot be found. Either the component that raises this event is not installed on your local computer or the installation is corrupted. You can install or repair the component on the local computer. If the event originated on another computer, the display information had to be saved with the event.  The following information was included with the event: Disabling blocked firewall rules
	When applying Standard Program Package		This event may be registered when Firewall is enabled, but this does not affect system operation.
11	Elxhc	Error	The driver detected a controller error on Device\RaidPortX. (X is any number)
	When applying Standard Program Package		This event does not affect system operation.
51	Cdrom	Warning	Error detected on the device \Device\CdRom0 during the paging operation.
	When installing an OS		This event may be registered in the event viewer, but this does not affect system operation.
56	Application Popup	Error	The description for Event ID 56 from source Application Popup cannot be found. Either the component that raises this event is not installed on your local computer or the installation is corrupted. You can install or repair the component on the local computer. If the event originated on another computer, the display information had to be saved with the event.  The following information was included with the event: PCI XXXXXXXXXXXXXXXXXXXX The message resource is present but the message was not found in the message table. * A different number replaces X depending on the connection status of LAN controller.
	When installing an OS, starting system, or applying Starter Pack		When multiple LAN controller are loaded it is registered, but does not affect system operation.

ID	Source	Level	Message (Description)
	Timing when an event is logged		Action

### All Windows OS "System Log"

56	Application Popup	Error	<p>The description for Event ID 56 from source Application Popup cannot be found. Either the component that raises this event is not installed on your local computer or the installation is corrupted. You can install or repair the component on the local computer.</p> <p>If the event originated on another computer, the display information had to be saved with the event.</p> <p>The following information was included with the event:</p> <p>SCSI XXXXXXXXXXXXXXXXXXXX</p> <p>The message resource is present but the message was not found in the message table.</p> <p>* A different number replaces X depending on the connection status of RAID controller and SAS controller.</p>
	When installing an OS, starting system, or applying Starter Pack		When multiple RAID controller or SAS controller are loaded it is registered, but does not affect system operation.
129	SmartPqi	Warning	Reset was issued to the device \Device\RaidPort(x). (x is any number)
	While the system is running		Even if the message is registered in the log, there is no problem because the OS has successfully completed the retry. You don't need any changes.
157	Disk	Warning	Disk x is suddenly removed.
	When creating a RAID		If you create new RAID on Windows, this event can be registered, but this does not affect the system operation.
1407	ESMCommonService	Error	<p>This is the event which occurred between this system start-up and the last system stop or system shutdown.</p> <p>Date : YYYY-MM-DD hh:mm:ss</p> <p>Event Class : 0x11</p> <p>Event Code : 0x0A</p> <p>Status : Critical</p> <p>Description : xxxxx Connectivity status changed to xxxxx for adapter in slot x, port x</p>
	When starting system, or applying Standard Program Package		This event does not affect system operation.
1407	ESMCommonService	Error	<p>This is the event which occurred between this system start-up and the last system stop or system shutdown.</p> <p>Date : YYYY-MM-DD hh:mm:ss</p> <p>Event Class : 0x11</p> <p>Event Code : 0x0C</p> <p>Status : Critical</p> <p>Description : Redundancy status changed to xxxxx by adapter in slot x, port x</p>
	When starting system, or applying Standard Program Package		This event does not affect system operation.

ID	Source	Level	Message (Description)
	Timing when an event is logged		Action

### All Windows OS "System Log"

1407	ESMCommonService	Error	This is the event which occurred between this system start-up and the last system stop or system shutdown. Date : YYYY-MM-DD hh:mm:ss Event Class : 0x11 Event Code : 0x0D Status : Critical Description : All links are down in adapter xxxxx in slot x
	When starting system, or applying Standard Program Package		This event does not affect system operation.
4367	Agentless Management Service	Error	Description of Event ID 4367, IML Class Code 17, Event Code 13: All links are down in adapter xxxxx in slot x. Check the connection to the adapter and validate the connectivity from the server to any external device, including the cabling. If no problems are found, the adapter or other connectivity device may need replacement.
	When installing an OS, starting system, or applying Standard Program Package		This event does not affect system operation.
4367	Agentless Management Service	Error	Description of IML Event ID 4367, Class Code 17, Event Code 12: Redundancy status changed to decreased by adapter in slot x, port x. If redundancy decreased, check the connection to the adapter and validate the connectivity from the server to any external device, including the cabling. If no problems are found, the adapter or other connectivity device may need replacement.
	When installing an OS, starting system, or applying Standard Program Package		This event does not affect system operation.
4367	Agentless Management Service	Error	Description of IML Event ID 4367, Class Code 17, Event Code 10: xxxxx Connectivity status changed to Link Failure for adapter in slot x, port x. If the connection is lost, then check the physical connection from the server to its destination device such as interconnect, blade, switch etc, including any cables. Refer to the NIC issues flowchart in the Troubleshooting Guide for more information.
	When installing an OS, starting system, or applying Standard Program Package		This event does not affect system operation.
7000	Service Control Manager	Error	QLogic Fibre Channel Service service failed to start due to the following error: the system cannot find the file specified
	Applying Standard Program Package		This event does not affect system operation.
37130	ESMCommonService	Error	Date : YYYY-MM-DD hh:mm:ss Event Class : 0x11 Event Code : 0x0A Status : Critical Description : xxxxx Connectivity status changed to xxxxx for adapter in slot x, port x
	When starting system, or applying Standard Program Package		This event does not affect system operation.

ID	Source	Level	Message (Description)
	Timing when an event is logged		Action

### All Windows OS "System Log"

37132	ESMCommonService	Error	Date : YYYY-MM-DD hh:mm:ss Event Class : 0x11 Event Code : 0x0C Status : Critical Description : Redundancy status changed to xxxxx by adapter in slot x, port x
	When starting system, or applying Standard Program Package		This event does not affect system operation.
37133	ESMCommonService	Error	Date : YYYY-MM-DD hh:mm:ss Event Class : 0x11 Event Code : 0x0D Status : Critical Description : All links are down in adapter xxxxx in slot x
	When starting system, or applying Standard Program Package		This event does not affect system operation.

ID	Source	Level	Message (Description)
	Timing when an event is logged		Action

### Windows Server 2022 "System Log"

4	I2nd2	Warning	Marvell FastLinQ Ethernet 10Gb 2-port BaseT QL41132HQRJ OCP3 Adapter #xx: The network link is down. Check to make sure the network cable is properly connected.
	When installing an OS, starting system, or applying Standard Program Package		This event does not affect system operation.
4	I2nd2	Warning	Marvell FastLinQ Ethernet 10Gb 2-port BaseT QL41132HLRJ Adapter #xx: The network link is down. Check to make sure the network cable is properly connected.
	When installing an OS, starting system, or applying Standard Program Package		This event does not affect system operation.
4	I2nd2	Warning	Marvell FastLinQ Ethernet 10/25Gb 2-port SFP28 QL41232HLCU Adapter #xx: The network link is down. Check to make sure the network cable is properly connected.
	When installing an OS, starting system, or applying Standard Program Package		This event does not affect system operation.
129	SmartPqi	Warning	Reset was issued to the device \Device\RaidPort(x). (x is any number)
	While the system is running		Even if the message is registered in the log, there is no problem because the OS has successfully completed the retry. You don't need any changes.
134	Microsoft-Windows-Time-Service	Warning	NtpClient was unable to set a manual peer to use as a time source because of DNS resolution error on 'time.windows.com,0x1'. NtpClient will try again in 15 minutes and double the reattempt interval thereafter. The error was: No such host is known. (0x80072AF9)
	While the system is running		This event does not affect system operation if it is not recorded after connecting to the internet.
157	Disk	Warning	Disk x is suddenly removed.
	When creating a RAID		If you create new RAID on Windows, this event can be registered, but this does not affect the system operation.
225	Kernel-PnP	Warning	The application YYY with process id XXX stopped the removal or ejection for the device ZZZ. * ZZZ : Instance name of the device YYY : Name of the process that was using the device XXX : ID of the process that was using the device
	When applying Standard Program Package		This event does not affect system operation.
7023	Service Control Manager	Error	"xxxxxxx service terminated with the following error: A device attached to the system is not functioning."
	When running an OS for the first time		This event does not affect system operation if it is recorded only on the first startup and not recorded repeatedly.

ID	Source	Level	Message (Description)
	Timing when an event is logged		Action

### Windows Server 2022 "System Log"

7030	Service Control Manager	Error	The Printer Extensions and Notifications service is marked as an interactive service. However, the system is configured to not allow interactive services. This service may not function properly.
	When running an OS for the first time		This event does not affect system operation if it is recorded only on the first startup and not recorded repeatedly.
10010	Microsoft-Windows-DistributedCOM	Error	The server {XXXXXXXX-XXXX-XXXX-XXXX-XXXXXXXXXXXX} did not register with DCOM within the required timeout.
	While the system is running		This event does not affect system operation.
10016	Microsoft-Windows-DistributedCOM	Warning	The application-specific permission settings do not grant Local Launch permission for the COM Server application with CLSID {*****} and APPID {*****} to the user ***** SID (*****) from address LocalHost (Using LRPC) running in the application container Unavailable SID (Unavailable). This security permission can be modified using the Component Services administrative tool.
	When installing an OS, starting system, or applying Standard Program Package		This event does not affect system operation.
10149	Microsoft-Windows-WinRM	Warning	The WinRM service is not listening for WS-Management requests.
	When restarting an OS		There is no problem to ignore it when WinRM event 10148 (The WinRM service is not listening for WS-Management requests.) is registered after soon.

ID	Source	Level	Message (Description)
	Timing when an event is logged		Action

### Windows Server 2022 "Application Event Log"

86	Microsoft-Windows-Certificate ServicesClient-CertEnroll	Error	SCEP Certificate enrollment initialization for XXXXXXXX via <a href="https://IFX-KeyId-5d0815951f5f60638a69e7252f3ec4becd7554b2.microsoftaik.azure.net/templates/Aik/scep">https://IFX-KeyId-5d0815951f5f60638a69e7252f3ec4becd7554b2.microsoftaik.azure.net/templates/Aik/scep</a>
	When starting system.		This event does not affect system operation. This event may be registered on the system that TPM is installed and has no connectivity to the internet.
1015	Microsoft-Windows-Security-SPP	Error	Detailed HRESULT. Returned hr=0xC004F022, Original hr=0x*****
	When restarting an OS		This event does not affect system operation if it is not recorded repeatedly after activating the Windows.
3007	EvtAgnt	Warning	Error opening event log file Parameters. Log will not be processed. Return code from OpenEventLog is 87.
	When SNMP is effective		Every restarting it's registered, it's no problem.
3007	EvtAgnt	Warning	Error opening event log file State. Log will not be processed. Return code from OpenEventLog is 87.
	When SNMP is effective		Every restarting it's registered, it's no problem.
8198	Microsoft-Windows-Security-SPP	Error	License Activation (slui.exe) failed with the following error code: hr=0x***** Command-line arguments: RuleId=*****
	When restarting an OS		This event does not affect system operation if it is not recorded repeatedly after activating the Windows.



ID	Source	Level	Message (Description)
	Timing when an event is logged		Action

### Windows Server 2022 "Applications and Services Logs"

21	Microsoft-Windows-AppModel-Runtime	Error	CreateAppContainerProfile failed for AppContainer onecore\ds\security\gina\profile\profext\appcontainer.cpp Line:1862 Usermode Font Driver Host microsoft.windows.fontdrvhost with error 0x8007000A.
	When installing an OS		This event does not affect system operation if it is not recorded repeatedly.
66	Microsoft-Windows-AppModel-Runtime	Error	Failed with 0x57 retrieving AppModel Runtime status for package Windows for user *****.
	When installing an OS		This event does not affect system operation if it is recorded only on the first startup and not recorded repeatedly.
200	Microsoft-Windows-DeviceSetupManager	Warning	A connection to the Windows Update service could not be established.
	While the system is running		This event does not affect system operation if it is not recorded after connecting to the internet.
201	Microsoft-Windows-DeviceSetupManager	Warning	A connection to the Windows Metadata and Internet Services (WMIS) could not be established.
	While the system is running		This event does not affect system operation if it is not recorded after connecting to the internet.
202	Microsoft-Windows-DeviceSetupManager	Warning	The Network List Manager reports no connectivity to the internet.
	While the system is running		This event does not affect system operation if it is not recorded after connecting to the internet.
215	Microsoft-Windows-AppReadiness	Error	Failed with 0x57 retrieving AppModel Runtime status for package Windows for user *****.
	When installing an OS		This event does not affect system operation if it is recorded only on the first startup and not recorded repeatedly.
360	Microsoft-Windows-User Device Registration	Warning	Windows Hello for Business provisioning will not be launched. Device is AAD joined ( AADJ or DJ++ ): Not Tested User has logged on with AAD credentials: No Windows Hello for Business policy is enabled: Not Tested Windows Hello for Business post-logon provisioning is enabled: Not Tested Local computer meets Windows hello for business hardware requirements: Not Tested User is not connected to the machine via Remote Desktop: Yes User certificate for on premise auth policy is enabled: Not Tested Machine is governed by none policy.
	When restarting an OS		There is no problem when it occurs at the environment that is not registered to Microsoft Azure AD.

---

## Revision Record

---

Document Number	Date	Notes
CBZ-002473-258-00	December 2021	The first edition