

Installation Guide (Windows Server 2022)

**NEC Express Server
Express5800 Series**

Express5800/R120i-1M, R120i-2M

Express5800/R120h-1M, R120h-1M (2nd-Gen), R120h-1M (3rd-Gen)

Express5800/R120h-2M, R120h-2M (2nd-Gen), R120h-2M (3rd-Gen)

Express5800/R120h-1E

Express5800/R120h-2E

Express5800/T120h

Chapter 1 Installing Windows

Chapter 2 Maintenance

Chapter 3 Appendix

Contents

| | |
|---|-----------|
| Contents | 2 |
| Introduction | 4 |
| Conventions Used in This Document | 5 |
| Notations used in the text | 5 |
| Optical disk drive..... | 5 |
| Hard disk drive | 5 |
| Removal Media | 5 |
| Abbreviations of Operating Systems | 6 |
| About description of model names | 6 |
| Trademarks | 7 |
| License Notification | 8 |
| License sentence | 8 |
| Warnings and Additions to This Document..... | 11 |
| Latest editions..... | 11 |
| Chapter 1 Installing Windows | 12 |
| 1. Information of Windows Installation | 13 |
| 1.1 Starting EXPRESSBUILDER | 14 |
| 1.2 Supported Windows OS..... | 14 |
| 1.3 Supported Mass Storage Controllers..... | 15 |
| 1.4 Supported Optional LAN board..... | 19 |
| 2. Flow of Windows Installation | 23 |
| 3. Installing Windows Server 2022 | 24 |
| 3.1 Precautions of Windows Server 2022 Installation..... | 24 |
| 3.2 Manual Installation..... | 31 |
| 3.2.1 Setup flow | 31 |
| 3.2.2 Requirements for Setup | 32 |
| 3.2.3 Installation procedure | 32 |
| 3.3 Standard Program Package Installation..... | 41 |
| 3.3.1 Installing Standard Program Package on Desktop Experience..... | 42 |
| 3.3.2 Installing Standard Program Package on Server Core | 44 |
| 3.4 Setup of Device Drivers | 46 |
| 3.4.1 Installing the LAN drivers | 46 |
| 3.4.2 Setting up LAN drivers | 48 |
| 3.4.3 Using Graphics Accelerator | 51 |
| 3.4.4 Using SAS Controller (N8103-184/E184)..... | 51 |
| 3.4.5 Using SAS Controller (N8103-197)..... | 51 |
| 3.4.6 Using RAID Controller (N8103-189/190/191/192/193/194/195/201/237/238) | 51 |
| 3.4.7 Using 480GB SSD Adapter for OS Boot (N8103-239) | 51 |
| 3.4.8 Using Fibre Channel Controller (N8190-163/164/165/166/171/172)..... | 51 |
| 3.5 License Authentication | 52 |
| 3.5.1 Desktop Experience..... | 52 |
| 3.5.2 Server Core | 56 |
| 3.6 Setup of Windows Server 2022 NIC Teaming (LBFO) | 58 |
| 3.6.1 Launching the NIC teaming setup tool | 58 |
| 3.6.2 Creating a team | 58 |
| 3.6.3 Removing a team..... | 59 |
| 3.6.4 Notes and restrictions | 59 |
| 3.7 Installing Applications | 60 |

| | | |
|-----------------------------|---|----|
| 4. | Setting up for Maintenance | 62 |
| 4.1 | Specifying Memory Dump Settings (Debug Information) | 62 |
| 4.2 | How to Create a User-mode Process Dump File | 68 |
| 5. | Backup of system information | 69 |
| Chapter 2 Maintenance | | 70 |
| 1. | Failure Information..... | 71 |
| 1.1 | Collecting Event Logs | 71 |
| 1.2 | Collecting Configuration Information..... | 73 |
| 1.3 | Collecting User-Mode Process Dump | 74 |
| 1.4 | Collecting Memory Dump..... | 74 |
| 2. | Troubleshooting | 75 |
| 2.1 | Problem of OS | 75 |
| 3. | Windows System Recovery | 76 |
| 3.1 | Recovery of Windows Server 2022 | 76 |
| Chapter 3 Appendix..... | | 78 |
| 1. | List of Windows Event Logs | 79 |
| Revision Record | | 91 |

Introduction

Thank you for purchasing our product.

When using the **EXPRESSBUILDER E8.10-010.03 (3.76.2)**, see this manual before installing Windows.

Please read carefully the instructions and keep this document for your future reference.

Conventions Used in This Document

Notations used in the text

The symbols used in this document include the following:

| | |
|------------------|---|
| Important | Indicates critical items that must be followed when handling hardware or operating software. If the procedures described are not followed, <u>hardware failure, data loss, and other serious malfunctions could occur.</u> |
| Note | Indicates items that must be confirmed when handling hardware or operating software. |
| Tips | Indicates information that is helpful to keep in mind when using this server. |

Optical disk drive

This server is equipped with one of the following drives. These drives are referred to as *optical disk drive* in this document.

- **DVD-ROM drive**
- **DVD Super MULTI drive**

Hard disk drive

Unless otherwise stated, *hard disk drive* described in this document refer to the following.

- **Hard disk drive (HDD)**
- **Solid state drive (SSD)**

Removal Media

Unless otherwise stated, *removal media* described in this document refer to both of the following.

- **USB Memory**
- **Flash FDD**

Abbreviations of Operating Systems

Windows OS are referred to as follows.

See *Chapter 1 (1.2 Supported Windows OS)* for detailed information.

| Notations in this document | Official names of Windows |
|----------------------------|--------------------------------|
| Windows Server 2022 | Windows Server 2022 Standard |
| | Windows Server 2022 Datacenter |

About description of model names

The following models are supported by this document. If not mentioned especially, the contents is for all models.
When the contents differs by model, each contents are described with model name.

Supported model is as follows.

- Express5800/R120i-1M
- Express5800/R120i-2M
- Express5800/R120h-1M, R120h-1M (2nd-Gen), R120h-1M (3rd-Gen)
- Express5800/R120h-2M, R120h-2M (2nd-Gen), R120h-2M (3rd-Gen)
- Express5800/R120h-1E
- Express5800/R120h-2E
- Express5800/T120h

Trademarks

Microsoft, Windows, and Windows Server are registered trademarks or trademarks of Microsoft Corporation in the United States and other countries.

Intel, Pentium, and Xeon are registered trademarks of Intel Corporation of the United States.

Broadcom, NetXtreme, LiveLink, Smart Load Balancing are registered trademarks or trademarks of the Broadcom Corporation in the U.S. and other countries.

All other product, brand, or trade names used in this publication are the trademarks or registered trademarks of their respective trademark owners.

License Notification

Open source software of following license is included in the part of this product (system ROM).

- **UEFI EDK2 License**
- **The MIT License Agreement**
- **PNG Graphics File Format Software End User License Agreement**
- **zlib End User License Agreement**

License sentence

UEFI EDK2 License

UEFI EDK2 Open Source License

Copyright (c) 2012, Intel Corporation. All rights reserved.

Redistribution and use in source and binary forms, with or without modification, are permitted provided that the following conditions are met:

- * Redistributions of source code must retain the above copyright notice, this list of conditions and the following disclaimer.
- * Redistributions in binary form must reproduce the above copyright notice, this list of conditions and the following disclaimer in the documentation and/or other materials provided with the distribution.

THIS SOFTWARE IS PROVIDED BY THE COPYRIGHT HOLDERS AND CONTRIBUTORS "AS IS" AND ANY EXPRESS OR IMPLIED WARRANTIES, INCLUDING, BUT NOT LIMITED TO, THE IMPLIED WARRANTIES OF MERCHANTABILITY AND FITNESS FOR A PARTICULAR PURPOSE ARE DISCLAIMED. IN NO EVENT SHALL THE COPYRIGHT HOLDER OR CONTRIBUTORS BE LIABLE FOR ANY DIRECT, INDIRECT, INCIDENTAL, SPECIAL, EXEMPLARY, OR CONSEQUENTIAL DAMAGES (INCLUDING, BUT NOT LIMITED TO, PROCUREMENT OF SUBSTITUTE GOODS OR SERVICES; LOSS OF USE, DATA, OR PROFITS; OR BUSINESS INTERRUPTION) HOWEVER CAUSED AND ON ANY THEORY OF LIABILITY, WHETHER IN CONTRACT, STRICT LIABILITY, OR TORT (INCLUDING NEGLIGENCE OR OTHERWISE) ARISING IN ANY WAY OUT OF THE USE OF THIS SOFTWARE, EVEN IF ADVISED OF THE POSSIBILITY OF SUCH DAMAGE.

=====

UEFI FAT File System Driver Open Source License

Copyright (c) 2006, Intel Corporation. All rights reserved.

Redistribution and use in source and binary forms, with or without modification, are permitted provided that the following conditions are met:

- . Redistributions of source code must retain the above copyright notice, this list of conditions and the following disclaimer.
- . Redistributions in binary form must reproduce the above copyright notice, this list of conditions and the following disclaimer in the documentation and/or other materials provided with the distribution.
- . Neither the name of Intel nor the names of its contributors may be used to endorse or promote products derived from this software without specific prior written permission.

THIS SOFTWARE IS PROVIDED BY THE COPYRIGHT HOLDERS AND CONTRIBUTORS "AS IS" AND ANY EXPRESS OR IMPLIED WARRANTIES, INCLUDING, BUT NOT LIMITED TO, THE IMPLIED WARRANTIES OF MERCHANTABILITY AND FITNESS FOR A PARTICULAR PURPOSE ARE DISCLAIMED. IN NO EVENT SHALL THE COPYRIGHT OWNER OR CONTRIBUTORS BE LIABLE FOR ANY DIRECT, INDIRECT, INCIDENTAL, SPECIAL, EXEMPLARY, OR CONSEQUENTIAL DAMAGES (INCLUDING, BUT NOT LIMITED TO, PROCUREMENT OF SUBSTITUTE GOODS OR SERVICES; LOSS OF USE, DATA, OR PROFITS; OR BUSINESS INTERRUPTION) HOWEVER CAUSED AND ON ANY THEORY OF LIABILITY, WHETHER IN CONTRACT, STRICT LIABILITY, OR TORT (INCLUDING NEGLIGENCE OR OTHERWISE) ARISING IN ANY WAY OUT OF THE USE OF THIS SOFTWARE, EVEN IF ADVISED OF THE POSSIBILITY OF SUCH DAMAGE.

Additional terms: In addition to the forgoing, redistribution and use of the code is conditioned upon the FAT 32 File System Driver and all derivative works thereof being used for and designed only to read and/or write to a file system that is directly managed by Intel's Extensible Firmware Initiative (EFI) Specification v. 1.0 and later and/or the Unified Extensible Firmware Interface (UEFI) Forum's UEFI Specifications v.2.0 and later (together the "UEFI Specifications"); only as necessary to emulate an implementation of the UEFI Specifications; and to create firmware, applications, utilities and/or drivers.

=====

The MIT License Agreement

The MIT License

Copyright (c) <year> <copyright holders>

Permission is hereby granted, free of charge, to any person obtaining a copy of this software and associated documentation files (the "Software"), to deal in the Software without restriction, including without limitation the rights to use, copy, modify, merge, publish, distribute, sublicense, and/or sell copies of the Software, and to permit persons to whom the Software is furnished to do so, subject to the following conditions:

The above copyright notice and this permission notice shall be included in all copies or substantial portions of the Software.

THE SOFTWARE IS PROVIDED "AS IS", WITHOUT WARRANTY OF ANY KIND, EXPRESS OR IMPLIED, INCLUDING BUT NOT LIMITED TO THE WARRANTIES OF MERCHANTABILITY, FITNESS FOR A PARTICULAR PURPOSE AND NONINFRINGEMENT. IN NO EVENT SHALL THE AUTHORS OR COPYRIGHT HOLDERS BE LIABLE FOR ANY CLAIM, DAMAGES OR OTHER LIABILITY, WHETHER IN AN ACTION OF CONTRACT, TORT OR OTHERWISE, ARISING FROM, OUT OF OR IN CONNECTION WITH THE SOFTWARE OR THE USE OR OTHER DEALINGS IN THE SOFTWARE.

PNG Graphics File Format Software End User License Agreement

Copyright (c) 1998-2001 Greg Roelofs. All rights reserved.

This software is provided "as is," without warranty of any kind, express or implied. In no event shall the author or contributors be held liable for any damages arising in any way from the use of this software.

Permission is granted to anyone to use this software for any purpose, including commercial applications, and to alter it and redistribute it freely, subject to the following restrictions:

1. Redistributions of source code must retain the above copyright notice, disclaimer, and this list of conditions.
2. Redistributions in binary form must reproduce the above copyright notice, disclaimer, and this list of conditions in the documentation and/or other materials provided with the distribution.
3. All advertising materials mentioning features or use of this software must display the following acknowledgment:

This product includes software developed by Greg Roelofs and contributors for the book, "PNG: The Definitive Guide," published by O'Reilly and Associates.

zlib End User License Agreement

zlib License

zlib.h -- interface of the 'zlib' general purpose compression library
version 1.2.2, October 3rd, 2004

Copyright (C) 1995-2004 Jean-loup Gailly and Mark Adler

This software is provided 'as-is', without any express or implied warranty. In no event will the authors be held liable for any damages arising from the use of this software.

Permission is granted to anyone to use this software for any purpose, including commercial applications, and to alter it and redistribute it freely, subject to the following restrictions:

1. The origin of this software must not be misrepresented; you must not claim that you wrote the original software. If you use this software in a product, an acknowledgment in the product documentation would be appreciated but is not required.
2. Altered source versions must be plainly marked as such, and must not be misrepresented as being the original software.
3. This notice may not be removed or altered from any source distribution.

Jean-loup Gailly jloup@gzip.org
Mark Adler madler@alumni.caltech.edu

Warnings and Additions to This Document

1. Unauthorized reproduction of the contents of this document, in part or in its entirety, is prohibited.
2. This document is subject to change at any time without notice.
3. Do not make copies or alter the document content without permission from NEC Corporation.
4. If you have any concerns, or discover errors or omissions in this document, contact your sales representative.
5. Regardless of article 4, NEC Corporation assumes no responsibility for effects resulting from your operations.
6. The sample values used in this document are not actual values.

Keep this document for future use.

Latest editions

This document was created based on the information available at the time of its creation. The screen images, messages and procedures are subject to change without notice. Substitute as appropriate when content has been modified.

The most recent version of this guide, as well as other related documents, is also available for download from the following website.

<https://www.nec.com/>

Installing Windows

This manual explains the setup procedure for a physical environment.

Read through this chapter to set up the Windows correctly.

1. Information of Windows Installation

Describes Supported Windows OS and mass storage controllers which is supported by EXPRESSBUILDER/Starter Pack.

2. Flow of Windows Installation

Describes the flow chart of Windows installation.

3. Installing Windows Server 2022

Describes how to install Windows Server 2022.

4. Setting up for Maintenance

Describes the features that should be set up for maintenance in advance.

5. Backup of system information

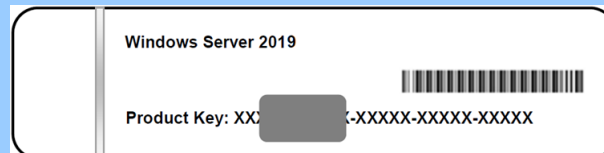
Describes how to back up the setting information of the system in advance of troubles.

1. Information of Windows Installation

This section describes the points of using EXPRESSBUILDER/Starter Pack to install Windows operating system.

Important

The product key on the Certificate of Authenticity (COA) label is necessary information when authenticate the license. Scrape off with a coin or the like lightly the scratch that covers a part of the product key. When you scrape, be careful not to break the part that the product key is printed on.



The label cannot be reissued if it is lost or stained. It is recommended to write down the product key and keep it with other accessories.

Refer to the following for the installation of virtual OS.

If your virtualization infrastructure is Hyper-V:

Refer to the following web site for the Hyper-V setting and the installation procedure of the guest OS and so on.

<https://www.58support.nec.co.jp/global/download/w2022/hyper-v/hyper-v-ws2022.html>

If your virtualization infrastructure is not Hyper-V:

Refer to the manual provided by virtualization infrastructure vendor to prepare the virtual environment.

Prepare a media or an ISO image of the OS to install.

1. Start the virtual machine from a media or an ISO image of the OS to install.
2. Follow the on-screen instruction to complete the OS installation.
3. Refer to the manual provided by virtualization infrastructure vendor to install the necessary services and applications.

1.1 Starting EXPRESSBUILDER

Use EXPRESSBUILDER to reconfigure RAID arrays.

For details, see *Chapter 1 (4. Details of EXPRESSBUILDER) in Maintenance Guide (Common)*.

Usage

Remove a CD/DVD and removable media from the server, restart the server and press <F10> key (EXPRESSBUILDER) during POST.

1.2 Supported Windows OS

You can install the following editions of Windows operating system.

EB : Rapid Setup

OS : Manual installation

| Name of Windows OS | | Boot mode | | Installation method | |
|-----------------------|------------|-----------|--------|---------------------|-----------|
| | | UEFI | Legacy | EB | OS |
| Windows Server 2022 * | Standard | ✓ | N/A | N/A | ✓ |
| | Datacenter | ✓ | N/A | N/A | ✓ |

✓ : Supported

* "Nano Server" is not supported.

1.3 Supported Mass Storage Controllers

The table below lists the controllers for this server, supported by EXPRESSBUILDER/Starter Pack.

If a controller not mentioned below is connected, set it up while referring to the instructions supplied with the controller.

(1) Express5800/R120i-1M, R120i-2M

| | R120i-1M | R120i-2M |
|--|----------|----------|
| RAID controller supporting the installation of OS | | |
| N8103-189 RAID Controller (RAID 0/1) | ✓ | ✓ |
| N8103-190 RAID Controller (2GB, RAID 0/1/5/6) | ✓ | ✓ |
| N8103-191 RAID Controller (4GB, RAID 0/1/5/6) | ✓ | ✓ |
| N8103-192 RAID Controller (RAID 0/1) | ✓ | N/A |
| N8103-193 RAID Controller (2GB, RAID 0/1/5/6) | ✓ | N/A |
| N8103-194 RAID Controller (4GB, RAID 0/1/5/6) | ✓ | N/A |
| N8103-195 RAID Controller (RAID 0/1) | ✓ | ✓ |
| N8103-201 RAID Controller (2GB, RAID 0/1/5/6) | ✓ | ✓ |
| N8103-237 RAID Controller (4GB, RAID 0/1/5/6) | ✓ | ✓ |
| N8103-238 RAID Controller (8GB, RAID 0/1/5/6) | ✓ | ✓ |
| N8103-239 480GB SSD Adapter for OS Boot (RAID 1) | ✓ | ✓ |
| Other options | | |
| N8103-184/E184 SAS Controller | ✓ | ✓ |
| N8103-197 SAS Controller | ✓ | ✓ |
| N8190-163 Fibre Channel Controller (1ch) | ✓ | ✓ |
| N8190-164 Fibre Channel Controller (2ch) | ✓ | ✓ |
| N8190-165 Fibre Channel Controller (1ch) | ✓ | ✓ |
| N8190-166 Fibre Channel Controller (2ch) | ✓ | ✓ |
| N8190-171 Fibre Channel Controller (1ch) | ✓ | ✓ |
| N8190-172 Fibre Channel Controller (2ch) | ✓ | ✓ |

✓: Supported

(2) Express5800/R120h-1M, R120h-2M (2nd-Gen) (3rd-Gen)

| | R120h-1M | R120h-2M | R120h-1M (2nd-Gen) | R120h-2M (2nd-Gen) | R120h-1M (3rd-Gen) | R120h-2M (3rd-Gen) |
|--|----------|----------|-----------------------|-----------------------|-----------------------|-----------------------|
| RAID controller supporting the installation of OS | | | | | | |
| Onboard RAID Controller | ✓ | ✓ | ✓ | ✓ | ✓ | ✓ |
| N8103-189 RAID Controller (RAID 0/1) | ✓ | ✓ | ✓ | ✓ | ✓ | ✓ |
| N8103-190 RAID Controller (2GB, RAID 0/1/5/6) | ✓ | ✓ | ✓ | ✓ | ✓ | ✓ |
| N8103-191 RAID Controller (4GB, RAID 0/1/5/6) | ✓ | ✓ | ✓ | ✓ | ✓ | ✓ |
| N8103-192 RAID Controller (RAID 0/1) | ✓ | N/A | ✓ | N/A | ✓ | N/A |
| N8103-193 RAID Controller (2GB, RAID 0/1/5/6) | ✓ | N/A | ✓ | N/A | ✓ | N/A |
| N8103-194 RAID Controller (4GB, RAID 0/1/5/6) | ✓ | N/A | ✓ | N/A | ✓ | N/A |
| N8103-195 RAID Controller (RAID 0/1) | ✓ | ✓ | ✓ | ✓ | ✓ | ✓ |
| N8103-201 RAID Controller (2GB, RAID 0/1/5/6) | ✓ | ✓ | ✓ | ✓ | ✓ | ✓ |
| N8103-239 480GB SSD Adapter for OS Boot (RAID 1) | N/A | N/A | N/A | N/A | ✓ | ✓ |
| Other options | | | | | | |
| N8103-196 RAID Controller (2GB, RAID 0/1/5/6) | ✓ | ✓ | ✓ | ✓ | ✓ | ✓ |
| N8103-184/E184 SAS Controller | ✓ | ✓ | ✓ | ✓ | ✓ | ✓ |
| N8103-197 SAS Controller | ✓ | ✓ | ✓ | ✓ | ✓ | ✓ |
| N8190-163 Fibre Channel Controller (1ch) | ✓ | ✓ | ✓ | ✓ | ✓ | ✓ |
| N8190-164 Fibre Channel Controller (2ch) | ✓ | ✓ | ✓ | ✓ | ✓ | ✓ |
| N8190-165 Fibre Channel Controller (1ch) | ✓ | ✓ | ✓ | ✓ | ✓ | ✓ |
| N8190-166 Fibre Channel Controller (2ch) | ✓ | ✓ | ✓ | ✓ | ✓ | ✓ |
| N8190-171 Fibre Channel Controller (1ch) | ✓ | ✓ | ✓ | ✓ | ✓ | ✓ |
| N8190-172 Fibre Channel Controller (2ch) | ✓ | ✓ | ✓ | ✓ | ✓ | ✓ |

✓: Supported

(3) Express5800/R120h-1E, R120h-2E

| | R120h-1E | R120h-2E |
|--|----------|----------|
| RAID controller supporting the installation of OS at EXPRESSBUILDER | | |
| Onboard RAID Controller | ✓ | ✓ |
| N8103-189 RAID Controller (RAID 0/1) | N/A | ✓ |
| N8103-190 RAID Controller (2GB, RAID 0/1/5/6) | N/A | ✓ |
| N8103-191 RAID Controller (4GB, RAID 0/1/5/6) | N/A | N/A |
| N8103-192 RAID Controller (RAID 0/1) | ✓ | N/A |
| N8103-193 RAID Controller (2GB, RAID 0/1/5/6) | ✓ | N/A |
| N8103-194 RAID Controller (4GB, RAID 0/1/5/6) | N/A | N/A |
| N8103-195 RAID Controller (RAID 0/1) | ✓ | ✓ |
| N8103-201 RAID Controller (2GB, RAID 0/1/5/6) | ✓ | ✓ |
| Other options | | |
| N8103-196 RAID Controller (2GB, RAID 0/1/5/6) | ✓ | ✓ |
| N8103-197 SAS Controller | ✓ | ✓ |
| N8190-163 Fibre Channel Controller (1ch) | ✓ | ✓ |
| N8190-164 Fibre Channel Controller (2ch) | ✓ | ✓ |
| N8190-165 Fibre Channel Controller (1ch) | ✓ | ✓ |
| N8190-166 Fibre Channel Controller (2ch) | ✓ | ✓ |
| N8190-171 Fibre Channel Controller (1ch) | ✓ | ✓ |
| N8190-172 Fibre Channel Controller (2ch) | ✓ | ✓ |

✓ : Supported

(4) Express5800/T120h

| | T120h |
|--|-------|
| RAID controller supporting the installation of OS at EXPRESSBUILDER | |
| Onboard RAID Controller | ✓ |
| N8103-189 RAID Controller (RAID 0/1) | ✓ |
| N8103-190 RAID Controller (2GB, RAID 0/1/5/6) | ✓ |
| N8103-191 RAID Controller (4GB, RAID 0/1/5/6) | ✓ |
| N8103-192 RAID Controller (RAID 0/1) | N/A |
| N8103-193 RAID Controller (2GB, RAID 0/1/5/6) | N/A |
| N8103-194 RAID Controller (4GB, RAID 0/1/5/6) | N/A |
| N8103-195 RAID Controller (RAID 0/1) | ✓ |
| N8103-201 RAID Controller (2GB, RAID 0/1/5/6) | ✓ |
| Other options | |
| N8103-196 RAID Controller (2GB, RAID 0/1/5/6) | ✓ |
| N8103-197 SAS Controller | ✓ |
| N8190-163 Fibre Channel Controller (1ch) | ✓ |
| N8190-164 Fibre Channel Controller (2ch) | ✓ |
| N8190-165 Fibre Channel Controller (1ch) | ✓ |
| N8190-166 Fibre Channel Controller (2ch) | ✓ |
| N8190-171 Fibre Channel Controller (1ch) | ✓ |
| N8190-172 Fibre Channel Controller (2ch) | ✓ |

✓ : Supported

1.4 Supported Optional LAN board

The table below lists the optional LAN boards for this server, supported by Starter Pack.

(1) Express5800/R120i-1M, R120i-2M

| | R120i-1M | R120i-2M |
|--|----------|----------|
| N8104-206 Quad Port 1000BASE-T LOM Card | ✓ | ✓ |
| N8104-207 Dual Port 10GBASE-T LOM Card | ✓ | ✓ |
| N8104-208 Dual Port 10/25GBASE SFP+ LOM Card | ✓ | ✓ |
| N8104-209 Quad Port 1000BASE-T Adapter | ✓ | ✓ |
| N8104-210 Dual Port 10GBASE-T Adapter | ✓ | ✓ |
| N8104-211 Dual Port 10/25GBASE SFP28 Adapter | ✓ | ✓ |
| N8104-212 Dual Port 10/25GBASE SFP28 Adapter | ✓ | ✓ |
| N8104-217 Dual Port 10GBASE-T LOM Card | ✓ | ✓ |
| N8104-219 Dual Port 10GBASE-T Adapter | ✓ | ✓ |

✓: Supported

(2) Express5800/R120h-1M, R120h-2M (2nd-Gen) (3rd-Gen)

| | R120h-1M | R120h-2M | R120h-1M (2nd-Gen) | R120h-2M (2nd-Gen) | R120h-1M (3rd-Gen) | R120h-2M (3rd-Gen) |
|---|----------|----------|-----------------------|-----------------------|-----------------------|-----------------------|
| N8104-171 Quad Port 1000BASE-T LOM Card | ✓ | ✓ | ✓ | ✓ | N/A | N/A |
| N8104-172 Quad Port 1000BASE-T LOM Card | ✓ | ✓ | ✓ | ✓ | ✓ | ✓ |
| N8104-173 Dual Port 10GBASE-T LOM Card | ✓ | ✓ | ✓ | ✓ | N/A | N/A |
| N8104-175 Dual Port 10GBASE-T LOM Card | ✓ | ✓ | ✓ | ✓ | ✓ | ✓ |
| N8104-176 Dual Port 10GBASE SFP+ LOM Card | ✓ | ✓ | ✓ | ✓ | N/A | N/A |
| N8104-177 Dual Port 25GBASE SFP+ LOM Card | ✓ | ✓ | ✓ | ✓ | N/A | N/A |
| N8104-178 Dual Port 1000BASE-T Adapter | ✓ | ✓ | ✓ | ✓ | ✓ | ✓ |
| N8104-179 Quad Port 1000BASE-T Adapter | ✓ | ✓ | ✓ | ✓ | ✓ | ✓ |
| N8104-180 Dual Port 1000BASE-T Adapter | ✓ | ✓ | ✓ | ✓ | ✓ | ✓ |
| N8104-181 Quad Port 1000BASE-T Adapter | ✓ | ✓ | ✓ | ✓ | ✓ | ✓ |
| N8104-182 Dual Port 10GBASE-T Adapter | ✓ | ✓ | ✓ | ✓ | ✓ | ✓ |
| N8104-183 Dual Port 10GBASE-T Adapter | ✓ | ✓ | ✓ | ✓ | ✓ | ✓ |
| N8104-184 Dual Port 10GBASE-T Adapter | ✓ | ✓ | ✓ | ✓ | ✓ | ✓ |
| N8104-185 Dual Port 10GBASE SFP+ Adapter | ✓ | ✓ | ✓ | ✓ | ✓ | ✓ |
| N8104-186 Dual Port 10GBASE SFP+ Adapter | ✓ | ✓ | ✓ | ✓ | ✓ | ✓ |
| N8104-187 Dual Port 25GBASE SFP28 Adapter | ✓ | ✓ | ✓ | ✓ | ✓ | ✓ |
| N8104-213 Dual Port 10GBASE-T LOM Card | N/A | N/A | N/A | N/A | ✓ | ✓ |
| N8104-215 Dual Port 10GBASE-T Adapter | N/A | N/A | N/A | N/A | ✓ | ✓ |

✓ : Supported

(3) Express5800/R120h-1E, R120h-2E

| | R120h-1E | R120h-2E |
|---|----------|----------|
| N8104-171 Quad Port 1000BASE-T LOM Card | ✓ | ✓ |
| N8104-172 Quad Port 1000BASE-T LOM Card | ✓ | ✓ |
| N8104-173 Dual Port 10GBASE-T LOM Card | ✓ | ✓ |
| N8104-175 Dual Port 10GBASE-T LOM Card | ✓ | ✓ |
| N8104-176 Dual Port 10GBASE SFP+ LOM Card | ✓ | ✓ |
| N8104-177 Dual Port 25GBASE SFP+ LOM Card | ✓ | ✓ |
| N8104-178 Dual Port 1000BASE-T Adapter | ✓ | ✓ |
| N8104-179 Quad Port 1000BASE-T Adapter | ✓ | ✓ |
| N8104-180 Dual Port 1000BASE-T Adapter | ✓ | ✓ |
| N8104-181 Quad Port 1000BASE-T Adapter | ✓ | ✓ |
| N8104-182 Dual Port 10GBASE-T Adapter | ✓ | ✓ |
| N8104-183 Dual Port 10GBASE-T Adapter | ✓ | ✓ |
| N8104-184 Dual Port 10GBASE-T Adapter | ✓ | ✓ |
| N8104-185 Dual Port 10GBASE SFP+ Adapter | ✓ | ✓ |
| N8104-186 Dual Port 10GBASE SFP+ Adapter | ✓ | ✓ |
| N8104-187 Dual Port 25GBASE SFP28 Adapter | ✓ | ✓ |
| N8104-193 Dual Port 1000BASE-T LOM Card | ✓ | ✓ |
| N8104-194 Dual Port 10GBASE-SR LOM Card | ✓ | ✓ |
| N8104-195 Dual Port 10GBASE-T LOM Card | ✓ | ✓ |
| N8104-215 Dual Port 10GBASE-T LOM Card | N/A | N/A |

✓ : Supported

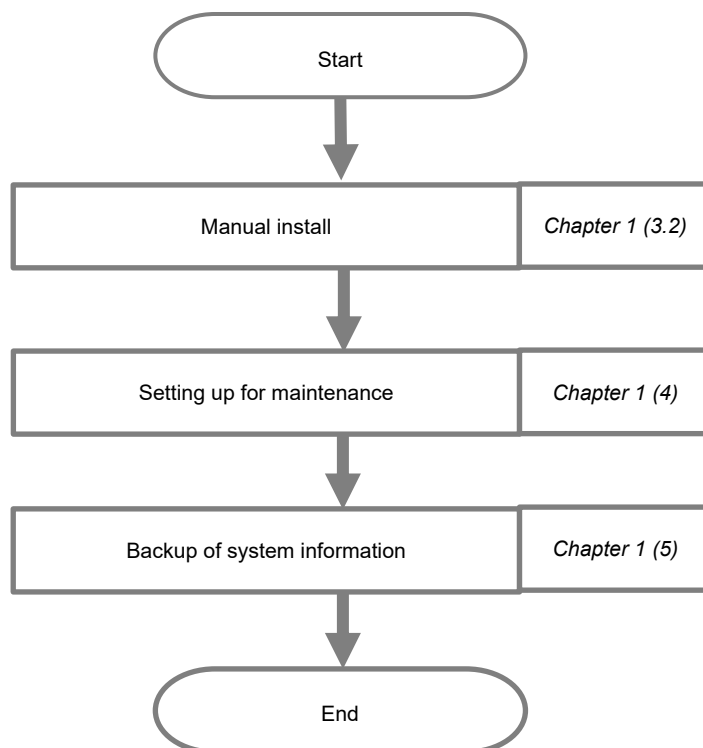
(4) Express5800/T120h

| | T120h |
|---|-------|
| N8104-178 Dual Port 1000BASE-T Adapter | ✓ |
| N8104-179 Quad Port 1000BASE-T Adapter | ✓ |
| N8104-180 Dual Port 1000BASE-T Adapter | ✓ |
| N8104-181 Quad Port 1000BASE-T Adapter | ✓ |
| N8104-182 Dual Port 10GBASE-T Adapter | ✓ |
| N8104-183 Dual Port 10GBASE-T Adapter | ✓ |
| N8104-184 Dual Port 10GBASE-T Adapter | ✓ |
| N8104-185 Dual Port 10GBASE SFP+ Adapter | ✓ |
| N8104-186 Dual Port 10GBASE SFP+ Adapter | ✓ |
| N8104-187 Dual Port 25GBASE SFP28 Adapter | ✓ |
| N8104-215 Dual Port 10GBASE-T Adapter | N/A |

✓ : Supported

2. Flow of Windows Installation

Read a proper section to install Windows according to the following figure.



Important After building environment, back up the setting information of the system in advance of any troubles.

3. Installing Windows Server 2022

3.1 Precautions of Windows Server 2022 Installation

Read the precautions explained this section before installing.

EB

: Rapid Setup

OS

: Manual Installation

| BIOS setting | | | |
|--------------|---|----|---|
| — | — | OS | <p>Change Boot Mode to UEFI Mode. For details, see <i>Chapter 2 (1. System Utilities)</i> in <i>Maintenance Guide</i>.</p> <p>System Configuration > BIOS/Platform Configuration (RBSU) > Boot Options > Boot Mode > UEFI Mode</p> |
| — | — | OS | <p>Select Enabled for x2APIC feature of processor. For details, see <i>Chapter 2 (1. System Utilities)</i> in <i>Maintenance Guide</i>.</p> <p>System Configuration > BIOS/Platform Configuration (RBSU) > Processor Options > Processor x2APIC Support > Enabled</p> |
| — | — | OS | <p><u>R120h-1M, R120h-2M, R120h-1E, R120h-2E, T120h</u></p> <p>Change time format to the Local Time. For details, see <i>Chapter 2 (1. System Utilities)</i> in <i>Maintenance Guide</i>.</p> <p>System Configuration > BIOS/Platform Configuration (RBSU) > Date and time > Time Zone : Unspecified Time Zone</p> |
| — | — | OS | <p><u>R120h-1M, R120h-2M, R120h-1E, R120h-2E, T120h</u></p> <p>Change time format to the Local Time. For details, see <i>Chapter 2 (1. System Utilities)</i> in <i>Maintenance Guide</i>.</p> <p>System Configuration > BIOS/Platform Configuration (RBSU) > Date and time > Time Format : Local Time</p> |
| — | — | OS | <p><u>R120i-1M / R120i-2M, R120h-1M (2nd-Gen) / (3rd-Gen), R120h-2M (2nd-Gen) / (3rd-Gen)</u></p> <p>Change time format to the Coordinated Universal Time (UTC). For details, see <i>Chapter 1 (1. System Utilities)</i> in <i>Maintenance Guide (Common)</i>.</p> <p>System Configuration > BIOS/Platform Configuration (RBSU) > Date and time > Time Format : Coordinated Universal Time (UTC)</p> |
| — | — | OS | <p><u>R120i-1M / R120i-2M, R120h-1M (2nd-Gen) / (3rd-Gen), R120h-2M (2nd-Gen) / (3rd-Gen)</u></p> <p>Change time zone to the Set arbitrary time zone. For details, see <i>Chapter 1 (1. System Utilities)</i> in <i>Maintenance Guide (Common)</i>.</p> <p>System Configuration > BIOS/Platform Configuration (RBSU) > Date and time > Time Zone : Set arbitrary time zone</p> |

| | | | |
|---|---|----|--|
| — | — | OS | <p><u>R120i-1M/R120i-2M</u></p> <p>When installing TPM, set the following settings.</p> <p>For details, see <i>Chapter 1 (1. System Utilities) in Maintenance Guide (Common)</i>.</p> <p>System Configuration > BIOS/Platform Configuration (RBSU) > Server Security > Advanced Security Options > Platform Certificate Support > [Enabled]</p> <p>System Configuration > BIOS/Platform Configuration (RBSU) > Server Security > Trusted Platform Module Options > Advanced Trusted Platform Module Options > TPM Visibility > [Visible]</p> |
| — | — | OS | <p><u>120h-1M / (2nd-Gen) / (3rd-Gen), R120h-2M / (2nd-Gen) / (3rd-Gen)</u></p> <p>When installing TPM, set the following settings.</p> <p>For details, see <i>Chapter 1 (1. System Utilities) in Maintenance Guide (Common)</i>.</p> <p>System Configuration > BIOS/Platform Configuration (RBSU) > Server Security > Platform Certificate Support > [Enabled]</p> <p>System Configuration > BIOS/Platform Configuration (RBSU) > Server Security > Trusted Platform Module Options > TPM Visibility > [Visible]</p> |
| — | — | OS | <p><u>R120h-1E, R120h-2E, T120h</u></p> <p>When installing TPM, set the following settings.</p> <p>For details, see <i>Chapter 1 (1. System Utilities) in Maintenance Guide (Common)</i>.</p> <p>System Configuration > BIOS/Platform Configuration (RBSU) > Server Security > Trusted Platform Module Options > TPM Visibility > [Visible]</p> |
| Hardware configuration | | | |
| The following hardware configurations require special procedures. | | | |
| — | — | OS | <p>Using RAID controller</p> <p>Before you install Windows Server 2022, if using a RAID controller, configure the RAID system in advance according to the <i>Maintenance Guide</i>.</p> |
| — | — | OS | <p>Installation When Multiple Logical Drives Exist</p> <p>If you select wrong hard disk drive in Windows Server 2022 installation, the setup may erase existing data unexpectedly.</p> |
| — | — | OS | <p>Reinstalling to a mirrored volume</p> <p>When you install Windows Server 2022 in an environment with a mirrored volume created using Windows, disable mirroring before installing the operating system and enable it again after the installation. Use [Computer Management] – [Disk Management] to create, disable, or remove the mirrored volume.</p> |
| — | — | OS | <p>Peripherals such as RDX</p> <p>Remove a RDX device before installing. Some peripherals need to be halted before installation. Refer to the manual provided with the peripherals for how to set a device appropriate to installation.</p> |
| — | — | OS | <p>DAT, LTO, and similar media</p> <p>Do not set media that is unnecessary to installation during setup.</p> |
| — | — | OS | <p>Reinstalling to dynamic disks</p> <p>Because dynamic disks are not recommended for Windows OS, convert it to basic disk and then install again.</p> |

OS

Setup when mass memory is installed

If mass memory is installed in your system, the large size of paging file is required at installation, and the partition size for storing debug information (dump file) cannot be allocated.

If you fail to create the partition, allocate the required size to multiple disks according to the following steps.

1. Set the system partition size to a size sufficient to install the OS and paging file.
2. Specify another disk as the destination to save the debug information (required dump file size) according to *Chapter 1 (4. Setting up for Maintenance)*.

If the hard disk drive does not have enough free area to write the debug information, set the partition size to a size sufficient to install the OS and paging file, and then add another hard disk drive for the dump file.

Note

If the partition size for installing Windows is smaller than the recommended size, expand the partition size or add another hard disk drive.

If sufficient free area cannot be allocated for the paging file, perform either of the following after install Windows.

- **Specify a hard disk drive other than the system drive as the location to store the paging file for collecting memory dump**

Create a paging file of 16MB or more in the system drive, and

"installed memory size + 400 MB (installed memory size + 1,800 MB when the size is 4 TB or more)" or more in a drive other than the system drive.

Edit the registry shown below by using the Registry Editor to specify the drive for collecting memory dump to top.

| | |
|------|---|
| Key | : HKEY_LOCAL_MACHINE\SYSTEM \CurrentControlSet\Control\Session Manager\Memory Management |
| Name | : PagingFiles |

For example as following, installed memory size is 8GB(8,192MB) and specify paging file in C: drive and E: drive, and use a paging file of E: drive to collect memory dump.

* Following value differs by specified paging file size.

| | |
|-------------|---|
| Before edit | C:\pagefile.sys 16 16 |
| | E:\pagefile.sys 8592 8592 (* 8592 = 8192+ 400) |
| ↓ | |
| After edit | E:\pagefile.sys 8592 8592 |
| | C:\pagefile.sys 16 16 |

Be careful of following when edit this settings.

- Be careful to edit registry.
- The setting is applied after restarting the system.
- Paging file on dynamic volume can not be used to collect memory dump.
- Because only the top drive of registry is used to collect memory dump, you need to set "installed memory size + 400 MB (installed memory size + 1,800 MB when the size is 4 TB or more)" paging file or more for 1 drive.

* Setting paging file divided as below is incorrect.

Memory dump may not be collected.

C: Paging file whose size is 16 MB

D: Paging file whose size is "installed memory size x 0.5"

E: Paging file whose size is "installed memory size x 0.5"

F: Paging file whose size is 400 MB or 1,800MB

If you close setting screen of paging file with [OK] button, registry value above will be changed although you do not change settings.

Opening setting screen of paging file before editing registry or after editing it, is unrelated.

When registry value is changed, you need to edit again manually, and then need to restart system to reflect settings.

– Specify a drive other than the system drive for "Dedicated Dump File".

Create the registry shown below by using the Registry Editor and specify the name of Dedicated Dump File.

<For example: "dedicateddumpfile.sys" in drive D>

| | |
|------|--|
| Key | : HKEY_LOCAL_MACHINE\SYSTEM \CurrentControlSet\Control\CrashControl |
| Name | : DedicatedDumpFile |
| Type | : REG_SZ |
| Data | : D:\dedicateddumpfile.sys |

Note the following when specifying Dedicated Dump File:

- The setting is applied after restarting the system.
- Specify a drive that has free space of "installed memory size + 400 MB" ("installed memory size + 1,800 MB" when the installed memory size is 4TB or more) or more.
- Dedicated Dump File cannot be placed in dynamic volumes.
- Dedicated Dump File is only used for collecting memory dump, and is not used as memory. Specify the paging file size so that sufficient virtual memory can be allocated in the entire system.

System partition size

08

The system partition size can be calculated by using the following formula.

Size required to install the OS + paging file size + dump file size + application size

Desktop Experience

| | | |
|---------------------------------|---|--|
| Size required to install the OS | = | 15,900 MB |
| Paging file size (recommended) | = | installed memory size + 400MB |
| Dump file size | = | installed memory size + 400MB (installed memory size is 4 TB or less) = installed memory size + 1,800MB (installed memory size is exceeding 4 TB) |
| Application size | = | as required by the application |

Server Core

| | | |
|---------------------------------|---|--|
| Size required to install the OS | = | 10,700MB |
| Paging file size (recommended) | = | installed memory size + 400MB |
| Dump file size | = | installed memory size + 400MB (installed memory size is 4 TB or less) = installed memory size + 1,800MB (installed memory size is exceeding 4 TB) |
| Application size | = | as required by the application |

For example, if the installed memory size is 8 GB (8,192 MB), and application size is 100 MB, the partition size is calculated as follows:

$$15,900\text{MB} + (8,192\text{MB} + 400\text{MB}) + 8,192\text{MB} + 400\text{MB} + 100\text{MB} = 33,184\text{MB}$$

The above mentioned partition size is the minimum partition size required for system installation. Ensure that the partition size is sufficient for system operations.

The following partition sizes are recommended.

Desktop Experience : **32,768MB(32GB) or more**

Server Core : **32,768MB(32GB) or more**

* 1GB = 1,024MB

Note

- In Windows Server 2022, a recovery partition will be created after the system partition. The system partition can not be extended because there is no unallocated area behind the system partition. Install Windows OS within sufficient partition size.
- The above paging file sizes are recommended for collecting debug information (dump file). The initial size of the Windows partition paging file must be large enough to store dump files. Make sure you set a sufficient paging file size. If the paging file is insufficient, there will be a virtual memory shortage that may result in an inability to collect correct debug information.
- Regardless of the sizes of internal memory and write debug information, the maximum size of the dump file is "installed memory size + 400 MB (installed memory size + 1,800 MB when installed memory size is 4 TB or more)".
- When installing other applications or other items, add the amount of space needed by the application to the partition.

If the partition size for installing Windows is smaller than the recommended size, expand the partition size or add another hard disk drive.

● **When installing using Manual Installation**

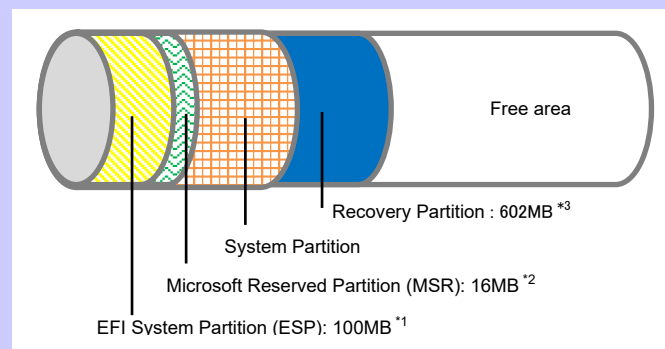
Tips

When creating a partition, Windows OS creates the following partitions at the hard disk drive

- EFI System Partition (ESP) : 100MB *1
- Microsoft Reserved Partition (MSR) : 16MB *2
- Recovery Partition : 602MB *3

For example, when 61,440MB is specified for partition size, the area available free area is calculated as follows:

$$61,440\text{MB} - (100\text{MB} + 16\text{MB} + 602\text{MB}) = 60,722\text{MB}$$



*1 May be 300MB in size depending on hard disk drive type.

*2 MSR is not displayed on **Disk Management**.

*3 Partition size differs according to used OS installation media.

If you install by Backup DVD-ROM, the partition is created at 602MB.

Windows Server 2022 Hyper-V support

— — OS

Refer to the following web site for information related to Windows Server 2022 Hyper-V.

<https://www.58support.nec.co.jp/global/download/w2022/hyper-v/hyper-v-ws2022.html>

Using BitLocker

— — OS

If using BitLocker, note the following.

- Be sure to keep the recovery password secure. Do not keep it near a server running BitLocker.

Important

If the recovery password is not entered, the OS cannot be started, and the content of the partition encrypted by BitLocker cannot be referenced any more. The recovery password might be required at startup of the OS after the following:

- Replacement of motherboard
- Change of BIOS setting
- Initialization of trusted platform module (TPM) *

* Depending on your system, it may not be supported.
Refer to the Instruction Manuals about hardware.

- To reinstall the operating system into a partition that is encrypted with BitLocker, delete the BitLocker-encrypted partition prior to reinstallation.

| Using Microsoft(R) Secured-core | | | |
|--|---|----|---|
| — | — | OS | <p>R120i-1M, R120i-2M</p> <p>When using Microsoft(R) Secured-core, set the following settings.</p> <p>For details, see <i>Chapter 1 (1. System Utilities) in Maintenance Guide (Common)</i>.</p> <p>System Configuration > BIOS/Platform Configuration (RBSU) > Server Security > Microsoft(R) Secured-core Support > [Enabled]</p> |
| Support for NIC teaming in Windows Server 2022 | | | |
| — | — | OS | <p>The NIC teaming feature, which used to be provided by network interface card (NIC) vendors, is built into Windows Server 2022. In Windows Server 2022, this feature is also called "load balancing and failover (LBFO)".</p> <p>Refer to <i>Chapter 1 (3.6 Setup of Windows Server 2022 NIC Teaming (LBFO))</i> and specify any required settings.</p> |
| Installing bundled software | | | |
| — | — | OS | <p>When you install software from Applications on Starter Pack menu, confirm each install procedure beforehand by referring to Installing Bundled Software in Installation Guide (Windows). Hardware setting may be required, be sure to confirm it.</p> |

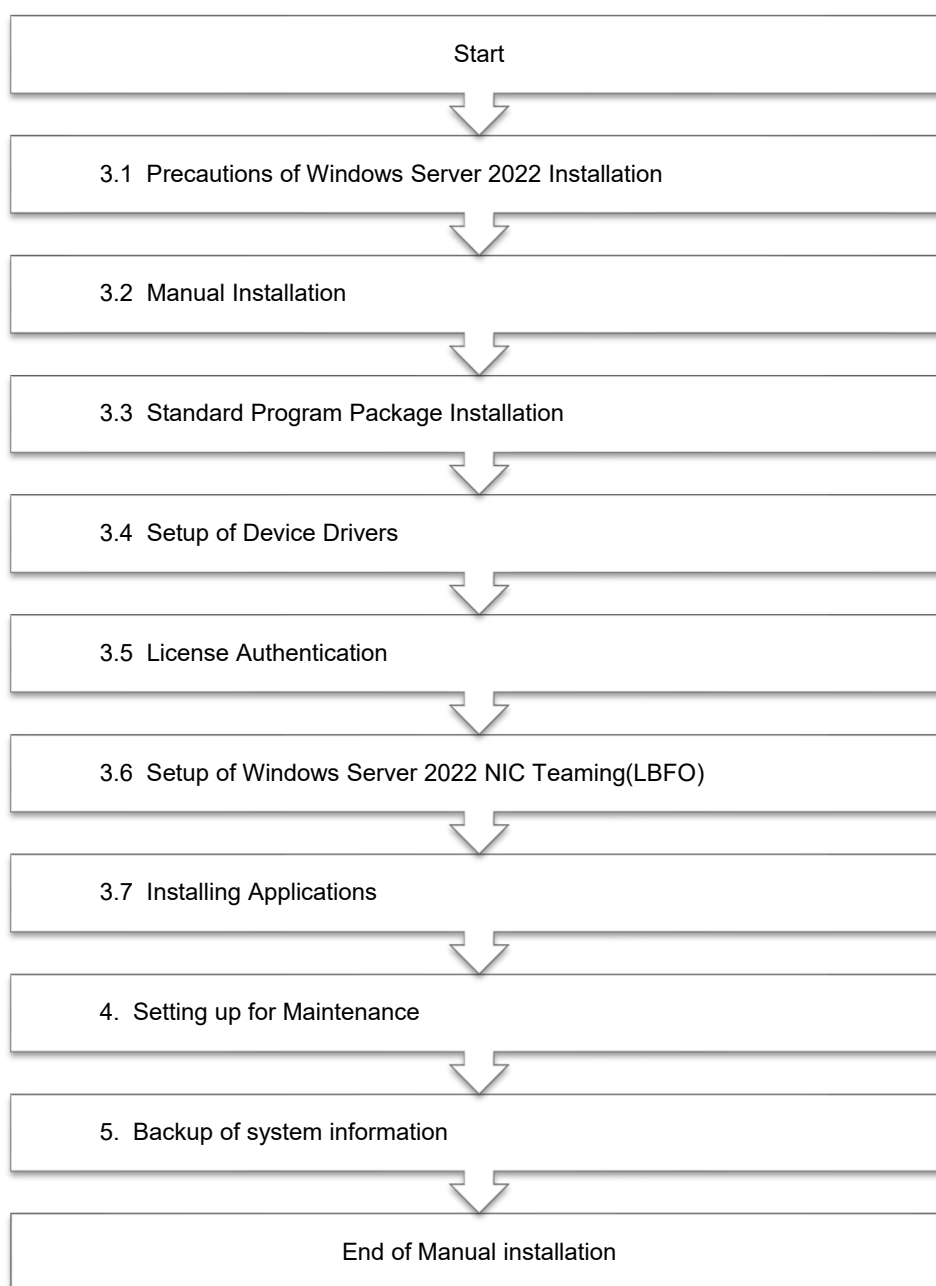
3.2 Manual Installation

This section describes how to install Windows Server 2022 with Manual option.

Important | Disconnect hard disk drives from the RAID controller that is not to be setup.

Note | "Manual Installation" installs OS without EXPRESSBUILDER.

3.2.1 Setup flow



3.2.2 Requirements for Setup

Prepare the following media and instruction manuals before starting setup.

- Either of the following OS installation media
 - **NEC operating system installation media** (hereafter referred to as *Backup DVD-ROM*)
 - **Microsoft operating system installation media** (hereafter referred to as *Windows Server 2022 DVD-ROM*)
- Starter Pack
 - **Starter Pack DVD** (Optional or downloading from our website)
 - The Starter Pack which supports Windows Server 2022 is "S8.10-010.04" or later.
Download it from Web site.

Note

If using the onboard RAID controller and the internal optical disk drive, the driver is loaded from a removable media device.

Copy and prepare the following files onto a removable media in advance.

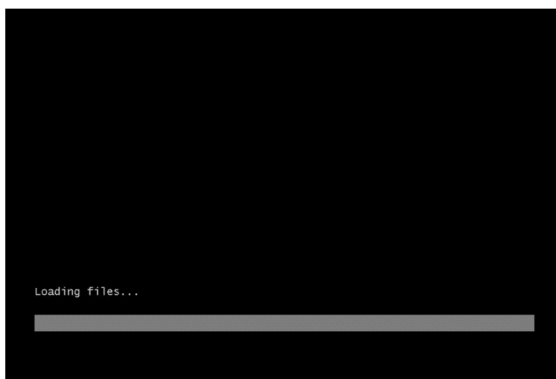
```
<Starter Pack>:\software\010\drivers\sw_raid1_driver
```

3.2.3 Installation procedure

Note

Read the precautions in *Chapter 1 (3.1 Precautions of Windows Server 2022 Installation)* in advance.

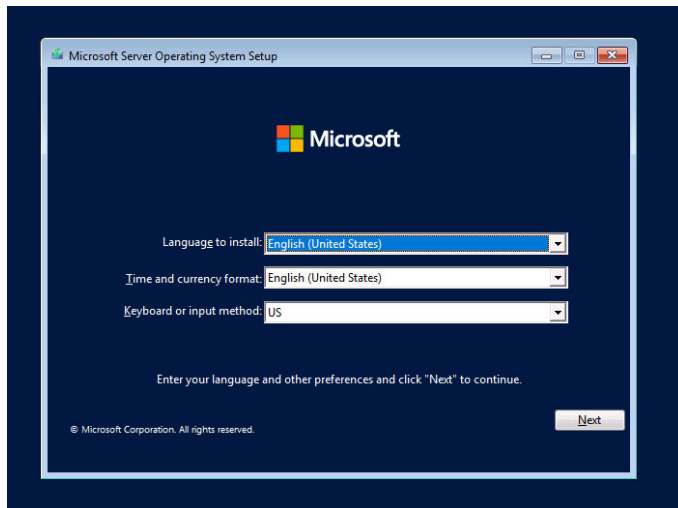
1. Turn on peripherals (such as a display), and then turn on the server.
Insert OS installation media into the drive.
2. To run EXPRESSBUILDER, press <F11> key during POST.
On the **One-Time Boot Menu**, select the optical disk drive in which the OS installation media was inserted.
3. The system starts from the OS installation media
The message "Press any key to boot from CD or DVD..." is displayed on the upper of the screen.
Press the <Enter> key to start from the media.



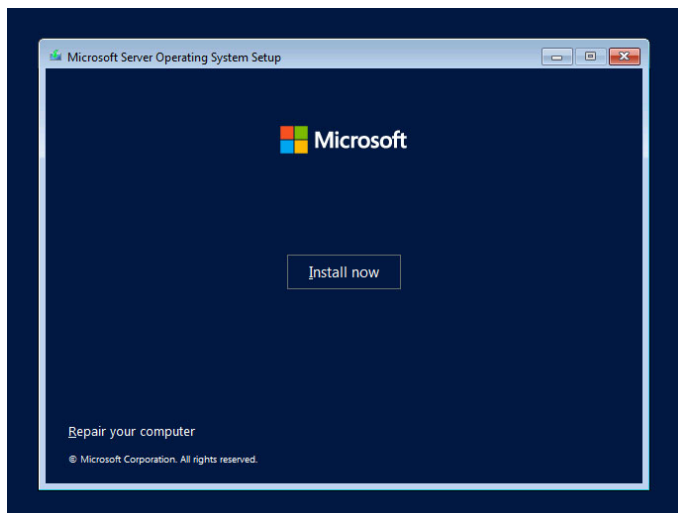
Note

If the Windows Setup screen (the screen in the next step) does not display, the <Enter> key was not properly pressed. Turn the system power on again, and then start again.

4. Click **Next**.



5. Click **Install now**.



If the following message is displayed: Go to Step 6.

If the following message is not displayed: Go to Step 8.



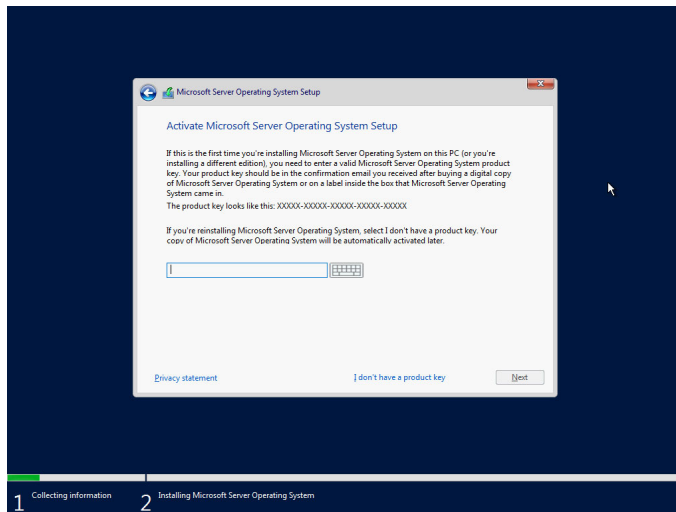
6. After connecting the removable media where the onboard RAID controller driver was copied, specify the path and click **OK**.

`<Removable media>:\sw_raid1_driver\ws2022`

7. Select the following driver from the displayed list of drivers, and click **Next**.

HPE Smart Array S100i SR Gen10 SW RAID

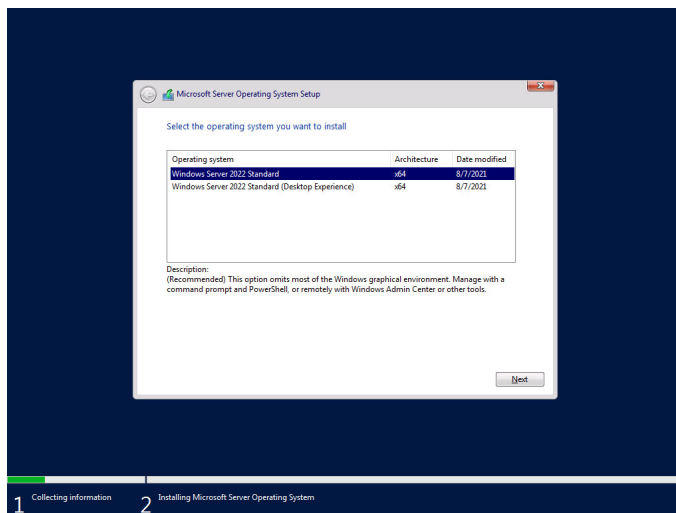
8. Type the product key, and then click **Next**.



Tips

If you are using Backup DVD-ROM, this screen does not appear.

9. Choose an operating system you want to install and click **Next**.



Options are displayed depending on the installation media you are using.

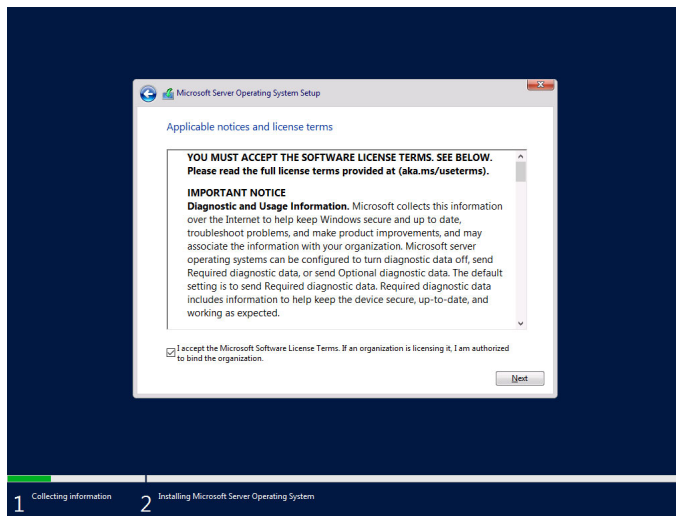
Tips

Read the message of the screen, and then choose an installation option.

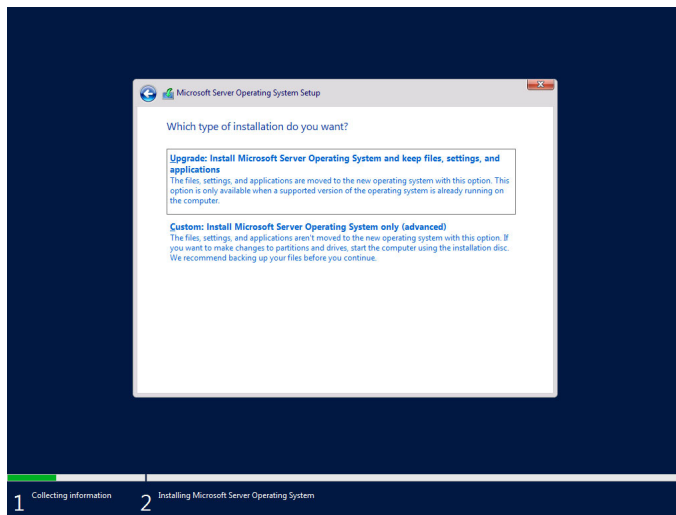
- Windows Server 2022 Standard or Windows Server 2022 Datacenter
→ Described as “Server Core” by this manual
- Windows Server 2022 Standard (Desktop Experience) or Windows Server 2022 Datacenter (Desktop Experience)
→ Described as “Desktop Experience” by this manual

10. Read the license terms carefully.

If you agree, check **I accept the Microsoft Software License Terms** and click **Next**.



11. Select **Custom: Install Microsoft Server Operating System only (advanced)**.



12. The “Select Windows installation location” screen is displayed.

If the driver was loaded in steps 6 and 7, or if the onboard RAID controller is not in use, proceed to step 15. If you select **Load driver** here, the following screen will be displayed.



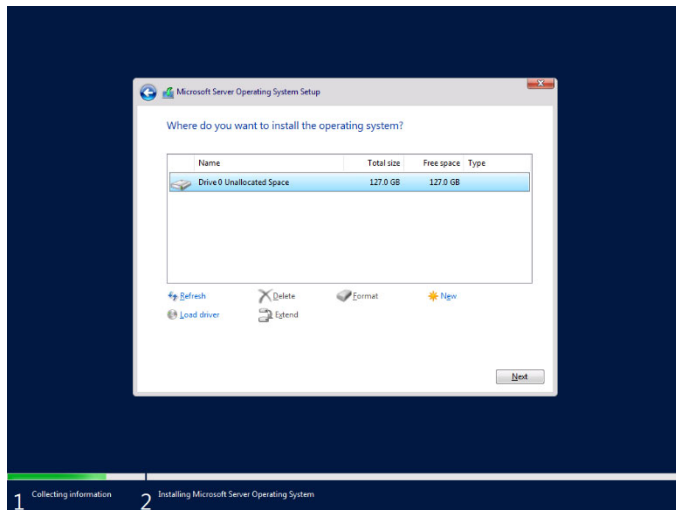
13. After setting the Starter Pack DVD in the UBS-DVD drive, assign a file directory, and click **OK**.

`<Starter Pack DVD>:\software\010\drivers\sw_raid1_driver\ws2022`

14. Select the following driver from the displayed list of drivers, and click **Next**.

HPE Smart Array S100i SR Gen10 SW RAID

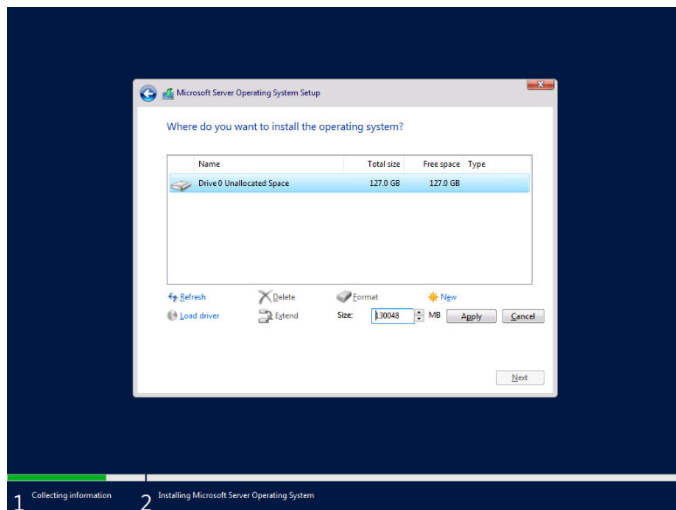
15. Click **New**.



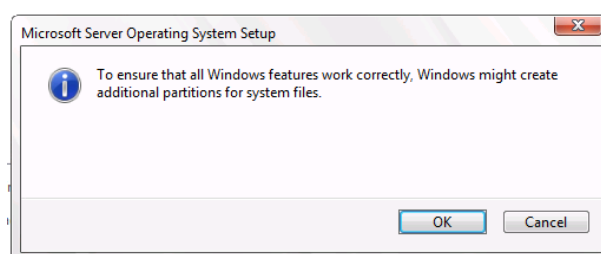
Tips

If **New** is not displayed on the screen, click **Drive options (advanced)**.

16. Specify the partition size in the text box, and then click **Apply**.



When the following window appears, click **OK**.



Note

After beginning the installation of Windows, a recovery partition is created automatically behind the system partition. The system partition can not be extended because there is no unallocated area behind the system partition. Install Windows OS within sufficient partition size.

Tips

When creating a partition, the OS creates the following partitions at top of the hard disk drive.

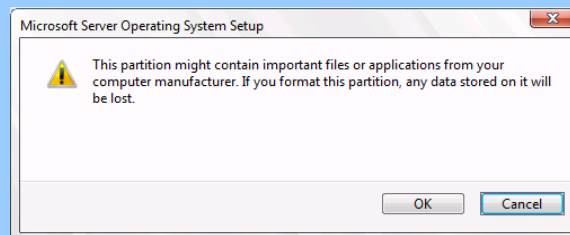
- EFI System Partition (ESP)
- Microsoft Reserved Partition (MSR)

17. Select the partition created in step 11, and then click **Format**.

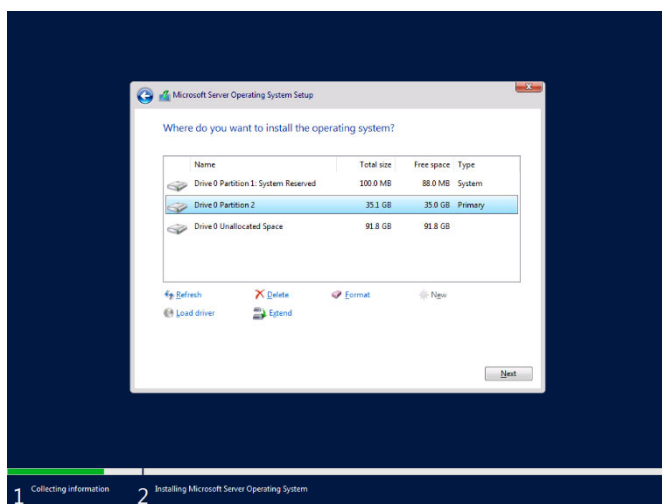
Important

When the following screen appears, read the message and click [OK].

Carefully select the partition to be formatted because data in the partition will be erased.

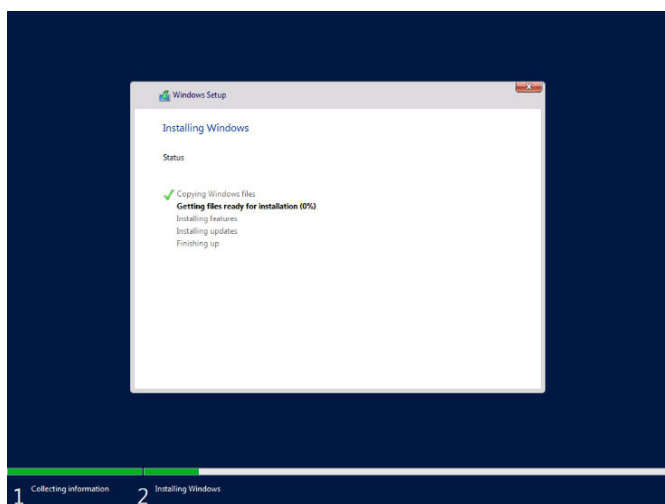


18. Select the created partition, and then click **Next**.

**Tips**

The number of partitions displayed differs depending on the hardware configuration.

When the following message appears, Windows installation starts automatically.



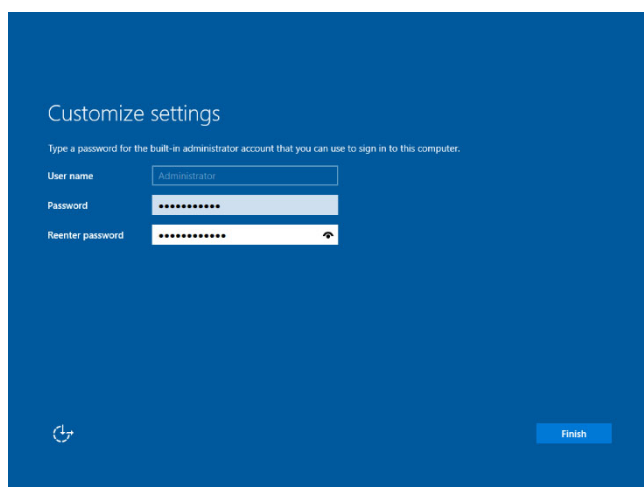
The server will automatically restart after Windows Server 2022 is installed.

You will proceed to Windows setup after restart.

19. Set user settings according to operating system chosen in step 9.

Desktop Experience

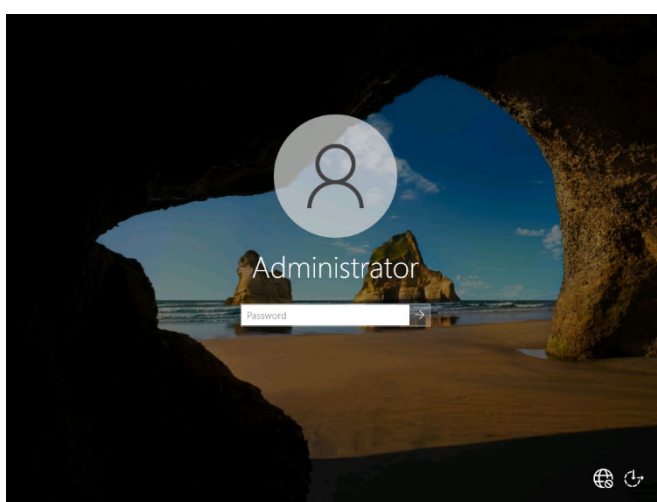
Type a password and click **Finish**.



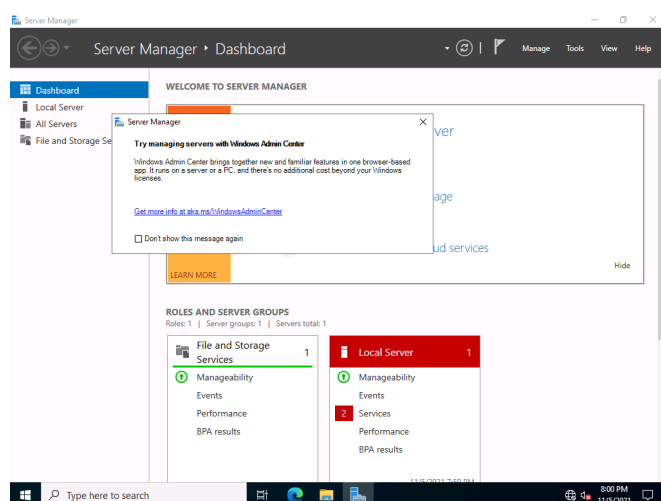
Press <Ctrl> + <Alt> + <Delete> keys to unlock.



Enter the password and press <Enter> key.

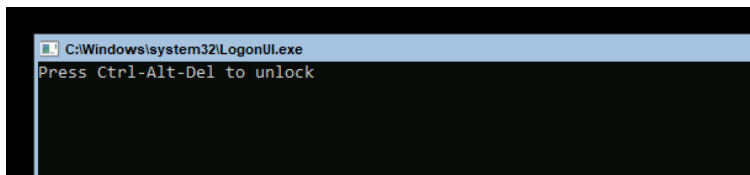


Windows Server 2022 starts.

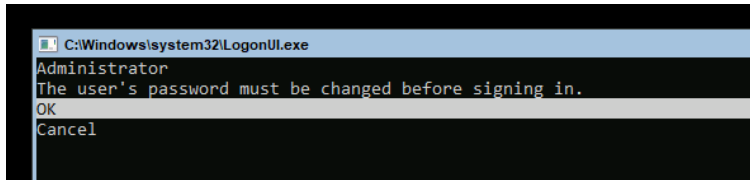


Server Core

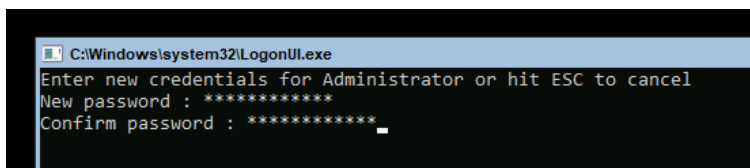
Press <Ctrl> + <Alt> + <Delete> keys to unlock.



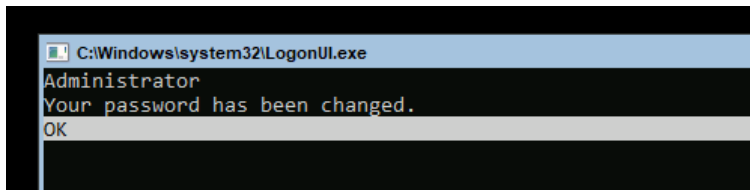
The password is needed to change. Choose **OK** and press <Enter> key.



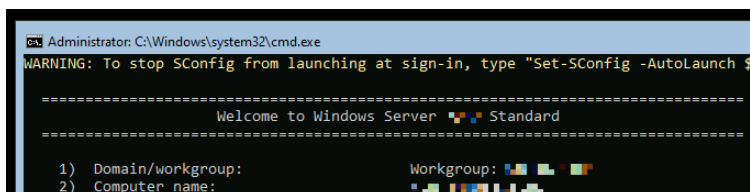
Enter a new password and press <Enter> key.



Choose **OK** and press <Enter> key after the following message is displayed.



Windows Server 2022 starts.



20. See *Chapter 1 (3.3 Standard Program Package Installation)* to install SPP.
21. Install drivers and specify detailed settings according to *Chapter 1 (3.4 Setup of Device Drivers)*.
22. Confirm if Windows is activated according to *Chapter 1 (3.5 License Authentication)*.
23. See *Chapter 1 (3.6 Setup of Windows Server 2022 NIC Teaming (LBFO))* to setup a team as needed.
24. Install the applications as needed according to *Chapter 1 (3.7 Installing Applications)*.
25. Set the other OS settings according to *Chapter 1 (4. Setting up for Maintenance)*.
26. See *Chapter 1 (5. Backup of system information)* to back up the system.

The Windows installation with Manual Installation is now complete.

3.3 Standard Program Package Installation

Standard Program Package (SPP) contains drivers customized for this server.

Make sure to install Standard Program Package before running the server system.

System reboot is required after applying Standard Program Package.

This program can apply using iLO remote console and iLO virtual media.

Important

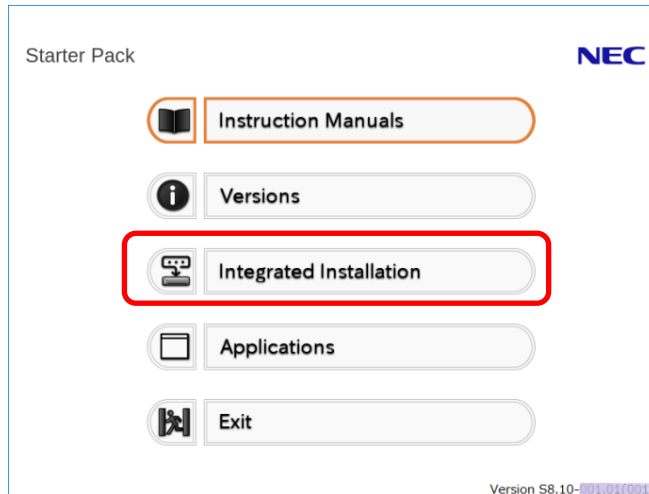
- Make sure to update firmware by booting "Starter Pack DVD" before applying Standard Program Package. If you mistake procedure, the system may not start.
- When you use these options, refer to the following procedure to install these drivers individually from "Starter Pack DVD" before installing SPP. SPP may be stopped with error if you do not install the driver beforehand.

When N8103-189/190/191/192/193/194/195/197/201/237/238 is installed to the server

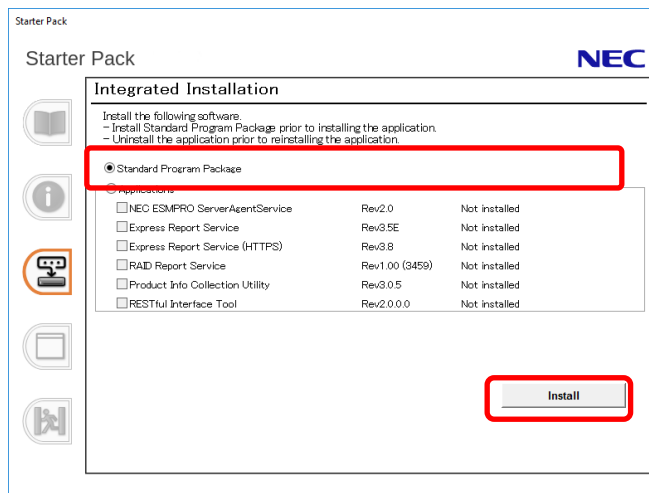
When the RAID controller is installed to the server,
\\packages\cp049387.exe on the DVD to install the driver.
After that, restart the server.

3.3.1 Installing Standard Program Package on Desktop Experience

1. Sign-in to the Windows with an Administrators privilege.
2. Set the Starter Pack DVD to the drive.
3. Run the **start_up.bat** under the root folder on DVD.
4. Click **Integrated Installation** on the menu.

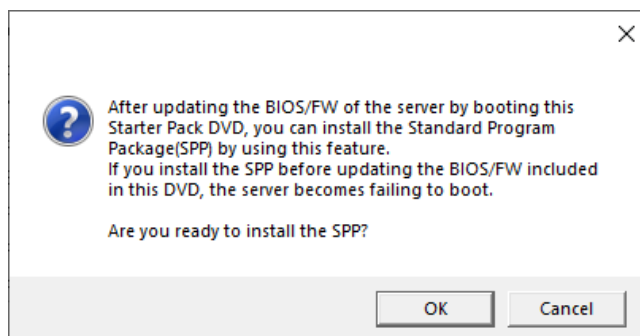


5. Choose **Standard Program Package** on the following screen, and then click **Install**.



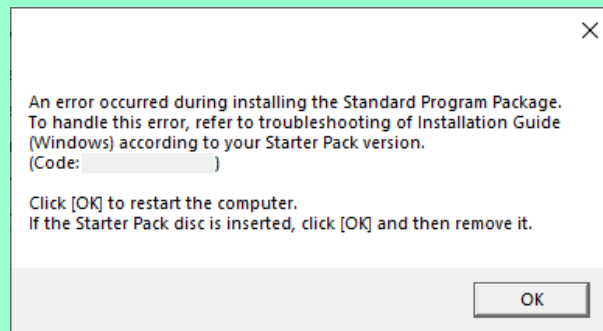
6. If you had updated firmware beforehand, click **OK** to start the installation of Standard Program Package.

Wait until installation completes (about 5 to 15 minutes).



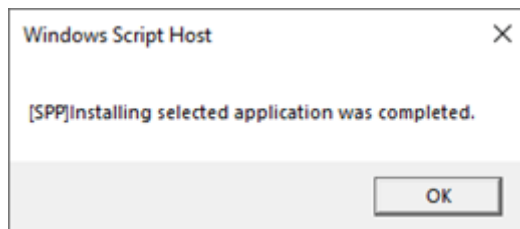
Note

- After installing a standard program package, the following message displays and refers to *chapter 2 (2.1 Problem of OS)*.



- iLO may be reset during applying Standard Program Package. If iLO is reset, iLO remote console and iLO virtual media is disconnected. When iLO remote console and iLO virtual media is disconnected, connect again after 30 seconds or more.

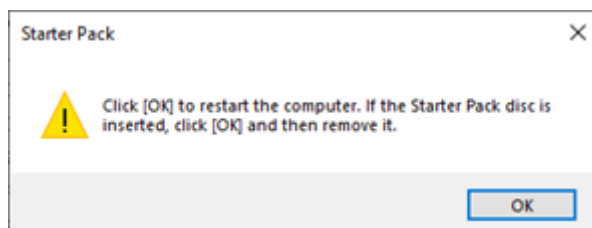
7. Click **OK**.

**Note**

If the following message displayed during installing the Standard Program Package, click **No** to continue process.

Stop running this script?
A script on this page is causing your web browser to run slowly.
If it continues to run, your computer might become unresponsive.

8. Windows Server 2022 restarts automatically.
Then, remove the Starter Pack DVD.



SPP installation is now complete.

3.3.2 Installing Standard Program Package on Server Core

1. Sign-in to the Windows with an Administrators privilege.
2. Set the Starter Pack DVD to the drive.
3. From the command prompt, type the following command.
In the example below, the optical disk drive is the D drive.

```
cd /d D:\software\010\win\seamless
```

```
C:\Users\administrator>cd /d D:\software\010\win\seamless
```

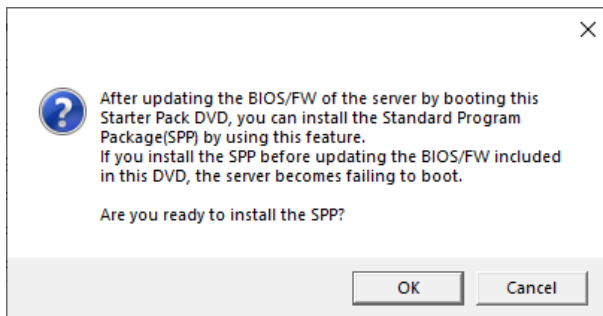
4. Type the following command, and then press <Enter> key.

```
instcmd.vbs spp /s
```

```
D:\software\010\win\seamless >instcmd.vbs spp /s
```

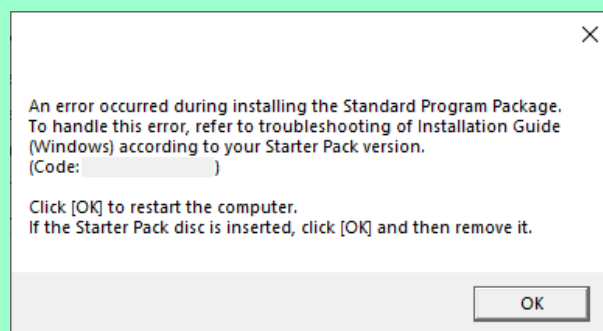
5. If you had updated firmware beforehand, click **OK** to start the installation of Standard Program Package.

Wait until installation completes (about 5 to 15 minutes).



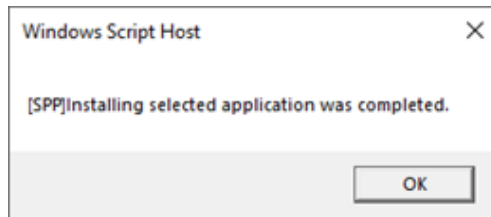
Note

- After installing a standard program package, the following message displays and refers to *chapter 2 (2.1 Problem of OS)*.



- iLO may be reset during applying Standard Program Package.
If iLO is reset, iLO remote console and iLO virtual media is disconnected. When iLO remote console and iLO virtual media is disconnected, connect again after 30 seconds or more.

6. Click **OK**.



7. After removing the Starter Pack DVD, restart Windows Server 2022 manually.

SPP installation is now complete.

3.4 Setup of Device Drivers

Install and set up device drivers provided for the standard configuration of the server.

For details regarding the installation and setup of a driver for an optional device, refer to the manual supplied with the optional device.

3.4.1 Installing the LAN drivers

(1) LAN drivers

The drivers are installed by Standard Program Package.

Important

Wake On LAN (WOL) is supported by onboard network adapters and N8104-171/172/173/175/193/194/195/206/207/208/213/217 only. Wake On LAN is available after installing the LAN driver.

For Wake On LAN of R120h-1E / R120h-2E / T120h onboard network adapters and N8104-172/175/193/194/195/206/208/213/217, when using Wake On LAN see Chapter 1 (3.4.2 Setting up LAN drivers - (3) Setting up Wake on LAN). BIOS settings, check Maintenance Guide.

Note

- To change the LAN driver settings, sign in to the system from a local console using an administrator's account. Remotely changing the settings by using the operating system's remote desktop feature is not supported.
- Choose the **Internet Protocol (TCP/IP)** check box when specifying an IP address.

(2) Optional LAN board

This server supports the following optional LAN boards.

| | |
|--|---|
| R120i-1M R120i-2M | N8104-206/207/208/209/210/211/212/217/219 |
| R120h-1M R120h-1M (2nd-Gen) R120h-2M R120h-2M (2nd-Gen) | N8104-171/172/173/175/176/177/178/179/180/181/182/183/184/185/186/187 |
| R120h-1M (3rd-Gen) R120h-2M (3rd-Gen) | N8104-172/175/178/179/180/181/182/183/184/185/186/187/213/215 |
| R120h-1E R120h-2E | N8104-171/172/173/175/176/177/178/179/180/181/182/183/184/185/186/187/ 193/194/195 |
| T120h | N8104-178/179/180/181/182/183/184/185/186/187 |

If you install the LAN boards after installing Standard Program Package, install Standard Program Package again according to Chapter 1 (3.3 Standard Program Package Installation).

(3) Network adapter name

After installing the LAN drivers, the following network adapter names will be displayed on the Device Manager.

- **Network adapters for the standard configuration**

| | |
|--|---|
| R120h-1M R120h-1M (2nd-Gen) R120h-2M R120h-2M (2nd-Gen) | HPE Ethernet 1Gb 4-port 331i Adapter #xx(*1) |
| R120h-1E R120h-2E | HPE Ethernet 1Gb 2-port 368i Adapter #xx(*1) |
| T120h | HPE Ethernet 1Gb 4-port 369i Adapter #xx(*1) |

- **If connecting with an optional LAN board:**

| | |
|-----------|---|
| N8104-171 | HPE Ethernet 1Gb 4-port 331FLR Adapter #xx(*1) |
| N8104-172 | HPE Ethernet 1Gb 4-port 366FLR Adapter #xx(*1) |
| N8104-173 | HPE FlexFabric 10Gb 2-port 533FLR-T Adapter #xx(*1) |
| N8104-175 | HPE Ethernet 10Gb 2-port 562FLR-T Adapter #xx(*1) |
| N8104-176 | Port1 : HPE Ethernet 10Gb 2-port 562FLR-SFP+ Adapter #xx(*1) Port2 : HPE Ethernet 10Gb 562SFP+ Adapter #xx(*1) |
| N8104-177 | HPE Ethernet 10/25Gb 2-port 622FLR-SFP28 Converged Network Adapter #xx(*1) |
| N8104-178 | HPE Ethernet 1Gb 2-port 332T Adapter #xx(*1) |
| N8104-179 | HPE Ethernet 1Gb 4-port 331T Adapter #xx(*1) |
| N8104-180 | HPE Ethernet 1Gb 2-port 361T Adapter #xx(*1) |
| N8104-181 | HPE Ethernet 1Gb 4-port 366T Adapter #xx(*1) |
| N8104-182 | HPE Ethernet 10Gb 2-port 530T Adapter #xx(*1) |
| N8104-183 | HPE Ethernet 10Gb 2-port 521T Adapter #xx(*1) |
| N8104-184 | HPE Ethernet 10Gb 2-port 562T Adapter #xx(*1) |
| N8104-185 | HPE Ethernet 10Gb 2-port 530SFP+ Adapter #xx(*1) |
| N8104-186 | Port1 : HPE Ethernet 10Gb 2-port 562SFP+ Adapter #xx(*1) Port2 : HPE Ethernet 10Gb 562SFP+ Adapter #xx(*1) |
| N8104-187 | HPE Ethernet 10/25Gb 2-port 621SFP28 Adapter #xx(*1) |
| N8104-193 | HPE Ethernet 1Gb 2-port 368FLR-MMT Adapter #xx(*1) |
| N8104-194 | HPE Ethernet 10Gb 2-port 568FLR-MMSFP+ Adapter #xx(*1) |
| N8104-195 | HPE Ethernet 10Gb 2-port 568FLR-MMT Adapter #xx(*1) |
| N8104-206 | Intel(R) Ethernet Network Adapter I350-T4 for OCP NIC 3.0 #xx (*1) |
| N8104-207 | Marvell FastLinQ Ethernet 10Gb 2-port BaseT QL41132HQRJ OCP3 Adapter #xx(*1) |
| N8104-208 | Intel(R) Ethernet Network Adapter E810-XXV-2 for OCP 3.0 #xx(*1) |
| N8104-209 | Intel(R) Ethernet Server Adapter I350-T4 #xx(*1) |
| N8104-210 | Marvell FastLinQ Ethernet 10Gb 2-port BaseT QL41132HLRJ Adapter #xx(*1) |
| N8104-211 | Marvell FastLinQ Ethernet 10/25Gb 2-port SFP28 QL41232HLCU Adapter #xx(*1) |
| N8104-212 | Intel(R) Ethernet Network Adapter E810-XXV-2 #xx(*1) |

| | |
|-----------|--|
| N8104-213 | HPE Ethernet 10Gb 2-port 535FLR-T Adapter #xx(*1) |
| N8104-215 | HPE Ethernet 10Gb 2-port 535T Adapter #xx(*1) |
| N8104-217 | Broadcom NetXtreme E-Series Dual-port 10GBASE-T Ethernet OCP 3.0 Adapter #xx(*1) |
| N8104-219 | Broadcom P210tep NetXtreme-E Dual-port 10GBASE-T Ethernet PCIe Adapter #xx(*1) |

*1: If there are adapters with the same name, a different identification number will be assigned to xx.

Tips

The ID for N8104-173/177/182/183/185/187/207/210/211 might be a number of two or more digits. This is due to the LAN driver specifications and not an error. This number cannot be changed.

Tips

The network adapter name displayed in the device manager may be different from the one listed above. In this case, the correct network adapter name can be displayed by following the procedure below.

1. Start **Device Manager**.
2. Open **Network Adapters**, right click on the relevant adapter, and select **Uninstall Device**.
Do not check the **Delete the driver software of this device** checkbox.
3. Select **Scan hardware change** from **Control**.

3.4.2 Setting up LAN drivers

(1) Setting link speed

The transfer rate and duplex mode of the network adapter must be the same as those of the switching hub. Follow the procedure below to specify the transfer rate and duplex mode.

Important

If you are using a network adapter for N8104-213/215/217/219, changing the setting is not supported of "Speed & Duplex". Use int the "Auto Negotiation" of default value.

Tips

If you are using a network adapter for N8104-177/185/187, the network adapter settings can be set to "10 Gbps Full Duplex" or "25 Gbps Full Duplex", and the connected switching hub settings can be set to "Auto Negotiation".

1. Open the **Device Manager**.
2. Expand **Network Adapters**, and then double-click the name of the network adapter you want to configure.

The properties of the network adapter will be displayed.

3. On the **Advanced** tab, set the **Speed & Duplex** values to the same as those of the switching hub.

Tips

When using the N8104-177/183/187/207/210/211, **Link control** set to **Driver controlled**. *When **Link control** is **Preboot controlled**, link speed setting of BIOS take a priority.

4. Click **OK** in the **Network Adapter Properties** dialog box.
5. Restart the system.

The link speed setting is now complete.

(2) Configuring Flow Control

Flow Control is a feature to stop transmitting frames temporarily by sending a pause frame to the destination device when the receive buffer is about to run out. When it receives a pause frame, it regulates the transmission.

Configure the Flow Control following the procedure below

Tips

The settings of Flow Control of the network adapter should match those of the destination device. For example, if Flow Control in the destination device is set as Enabled, that in the network adapter should be set as Enabled.
The default value of Flow Control is may become disabled, so if Flow Control in the destination device is set as Enabled, enable the network adapter.

1. Open the **Device Manager**.
2. Expand **Network Adapters**, and then double-click the name of the network adapter you want to configure.
The properties of the network adapter will be displayed.
3. Open **Advanced** tab, click **Flow Control** to show Value.

Tips

For N8104-208/212, it is recommended to set the **Receive Buffer** value to **4096**.

4. The Value can be changed by the down-arrow button.
5. Click **OK**, and then restart the system.

The Flow Control setting is now complete.

(3) Setting up Wake on LAN

- When using R120h-1E / R120h-2E / T120h onboard network adapters and N8104-172/175/193/194/195/206/208 with the server, follow the procedure below to set it.
 1. Open the **Device Manager**.
 2. Expand **Network Adapters**, and then double-click the name of the network adapter you want to configure.
The properties of the network adapter will be displayed.
 3. Open **Advanced** tab, click **Enable PME** to show Value.
 4. Change the value to **Enabled** by the down-arrow button.
 5. Click **OK**, and then restart the system.
Setup is now complete.
- For the Wake On LAN of the N8104-213/217, setting change in the BIOS.
The **Enable PME on shutdown** in the **Advanced** of network adapter is not a Wake On LAN setting and should not be changed.

(4) Important notes on using virtual switches and SET (Switch Embedded Teaming) in a Hyper-V environment.

- When R120h-1E / R120h-2E / T120h onboard network adapters and N8104-193 is use with virtual switches or SET (Switch Embedded Teaming), following steps below to reload the network adapter in beforehand.
 1. Start **Device Manager**.
 2. Open **Network Adapters**, right click on the name of the network adapter you want to reload, and select **Uninstall Device**. The **Uninstall Device** will be displayed.
 3. Select **Uninstall**.
Do not check the **Delete the driver software of this device** checkbox.
 4. After the target network adapter is removed, select **Scan for hardware change** from **Action**.
The network adapter will start to reload.
Setup is now complete.
- When N8104-173/182/185 is use with SET (Switch Embedded Teaming), following steps below to set **Encapsulated Task Offload** to disable in beforehand.
 1. Start **Device Manager**.
 2. Open **Network Adapters**, and then double-click the name of the network adapter you want to configure.
The properties of the network adapter will be displayed.
 3. Open **Advanced** tab, click **Encapsulated Task Offload** to show Value.
 4. Change the value to **Disabled** by the down-arrow button.
 5. Click **OK**, and then restart the system.
Setup is now complete.

(5) Important notes on using NIC Teaming (LBFO).

- When R120h-1M / R120h-1M (2nd-Gen) / R120h-2M / R120h-2M (2nd-Gen) / R120h-1E / R120h-2E / T120h onboard network adapters and N8104-171/172/178/179/180/181/193/206/209 is use with NIC Teaming (LBFO), following steps below to set disable **ARP Offload** and **NS Offload** in beforehand.
 1. Start **Device Manager**.
 2. Open **Network Adapters**, and then double-click the name of the network adapter you want to configure.
The properties of the network adapter will be displayed.
 3. Open **Advanced** tab, set value of **ARP Offload** and **NS Offload** to **Disabled**.
 4. Click **OK**, and then restart the system.
Setup is now complete.

3.4.3 Using Graphics Accelerator

For installation with the Manual installation, the drivers are installed by Standard Program Package.

If you install the Graphics Accelerator driver after installing Standard Program Package, install Standard Program Package again according to *Chapter 1 (3.3 Standard Program Package Installation)*.

3.4.4 Using SAS Controller (N8103-184/E184)

The driver for SAS controller N8103-184/E184 is automatically installed by Windows Plug-and-Play.

3.4.5 Using SAS Controller (N8103-197)

For installation with the Manual installation, the drivers are installed by Standard Program Package.

If you install the SAS controller (N8103-197) after installing Standard Program Package, install driver by following steps.

1. Insert the Starter Pack DVD into the optical disk drive.
2. Run the `\\packages\cp049387.exe` on the DVD to install the driver.
3. After installing driver, restart the server.

3.4.6 Using RAID Controller (N8103-189/190/191/192/193/194/195/201/237/238)

For installation with the Manual installation, the drivers are installed by Standard Program Package.

If you install the RAID controller (N8103-189/190/191/192/193/194/195/201/237/238) after installing Standard Program Package, install driver by following steps.

1. Insert the Starter Pack DVD into the optical disk drive.
2. Run the `\\packages\cp049387.exe` on the DVD to install the driver.
3. After installing driver, restart the server.

3.4.7 Using 480GB SSD Adapter for OS Boot (N8103-239)

The driver for the 480GB SSD Adapter for OS Boot (N8103-239) is automatically installed by Windows Plug-and-Play.

3.4.8 Using Fibre Channel Controller (N8190-163/164/165/166/171/172)

For installation with the Manual installation, the drivers are installed by Standard Program Package. If you install the Fibre Channel Controller (N8190-163/164/165/166/171/172) after installing

Standard Program Package, install Standard Program Package again according to *Chapter 1 (3.3 Standard Program Package Installation)*.

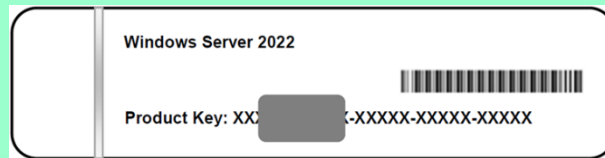
3.5 License Authentication

To use Windows Server 2022, you need finish the license authentication procedure.

Confirm if the license is authenticated or not in the next step.

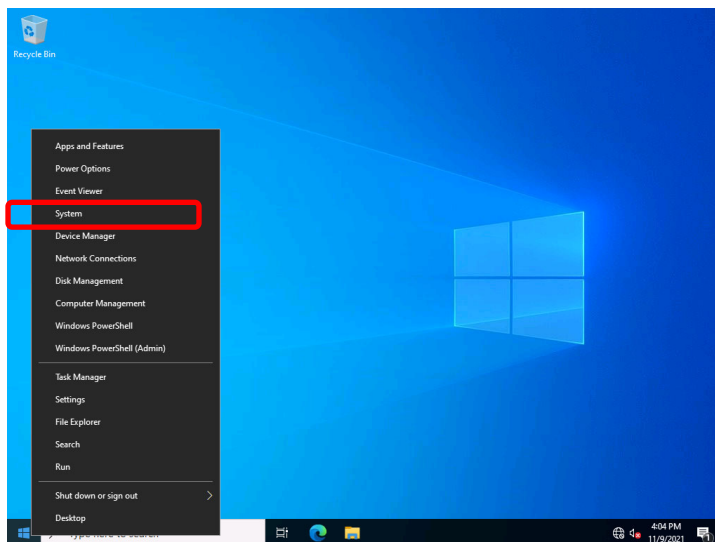
Note

To activate Windows Server 2022, enter the Product Key written on the COA (Certificate of Authenticity) label. The COA label of Windows Server 2022 is attached to the operating system media package.

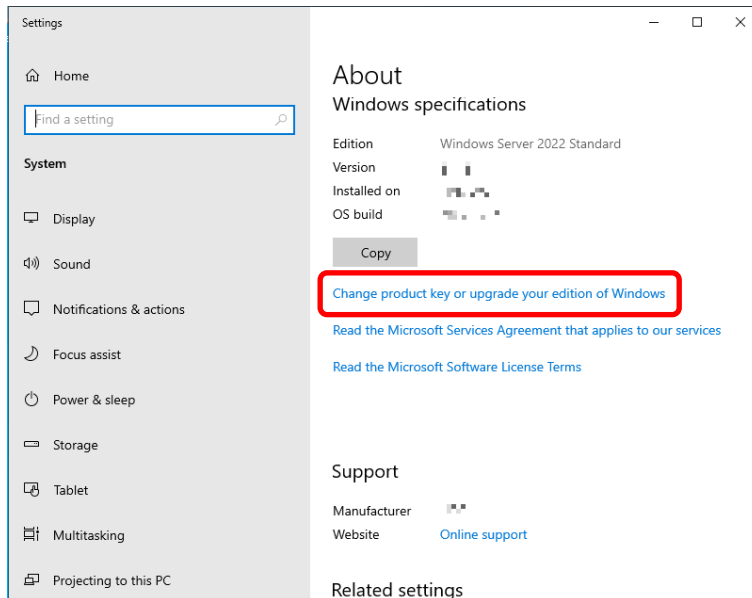


3.5.1 Desktop Experience

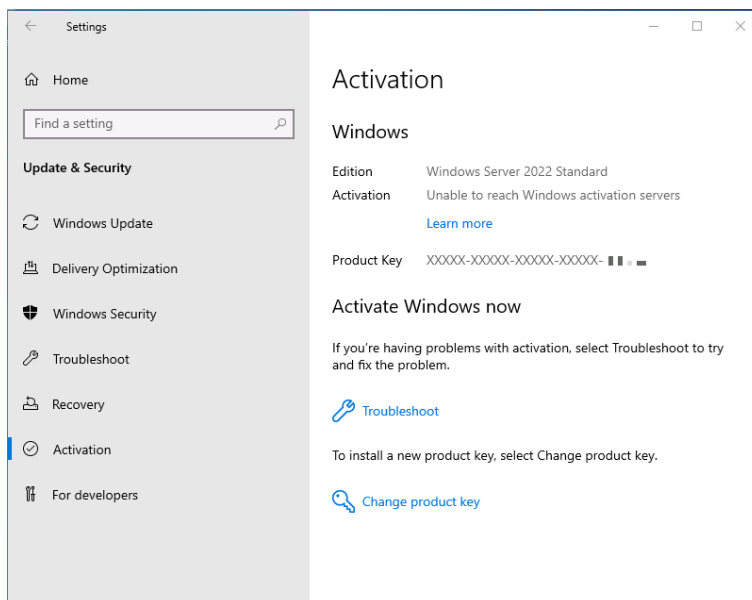
1. Right-click the lower left of the screen, and click **System** from the menu displayed.



2. Click **Change product key or upgrade your edition of Windows**.



3. Perform license authentication.



When connected to the Internet:

Click **Change product key**.

Complete license authentication process according to the message.

When not connected to the Internet:

Go to Step 4.

4. Perform the license authentication by phone.

Go to the appropriate step according to OS installation media you are using.

Backup DVD-ROM:

Go to Step 5.

Windows Server 2022 DVD-ROM:

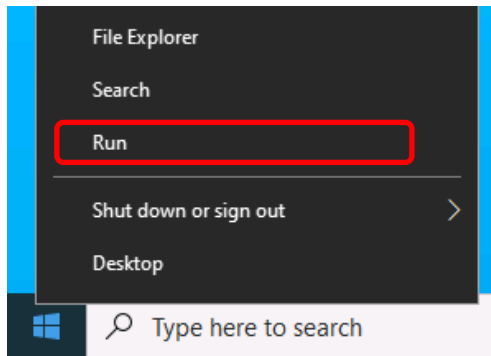
Product key is already entered:

Go to Step 8.

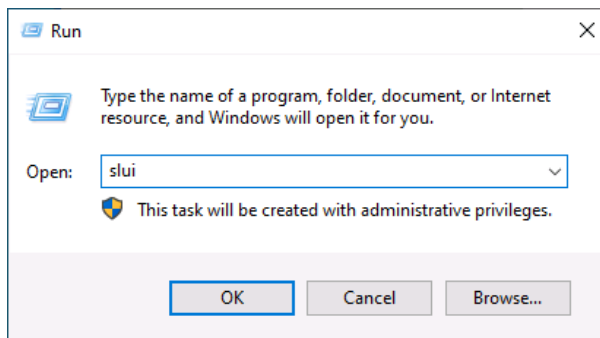
Product key is not entered:

Go to Step 5.

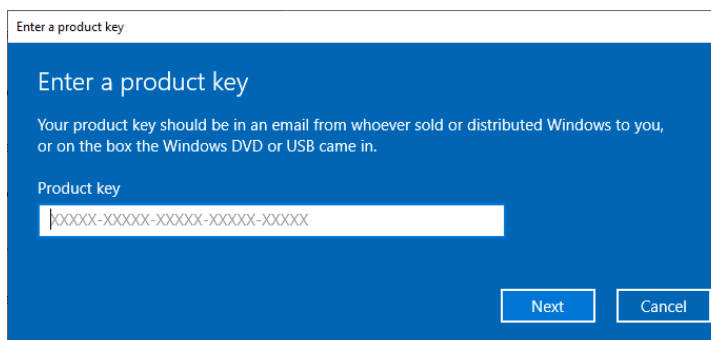
5. Right-click the lower left of the screen, and click **Run** from the menu displayed.



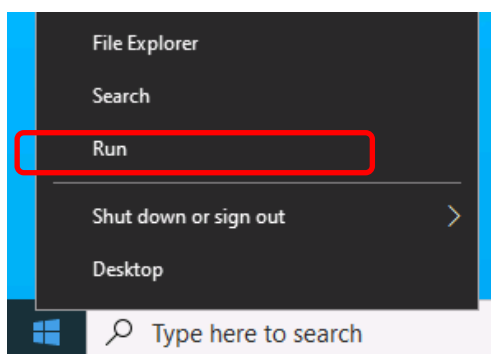
6. Type "slui", and then press <Enter> key.



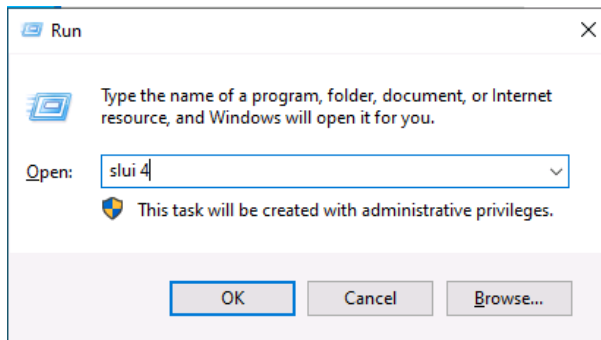
7. Change the product key. On the next screen, type the product key.



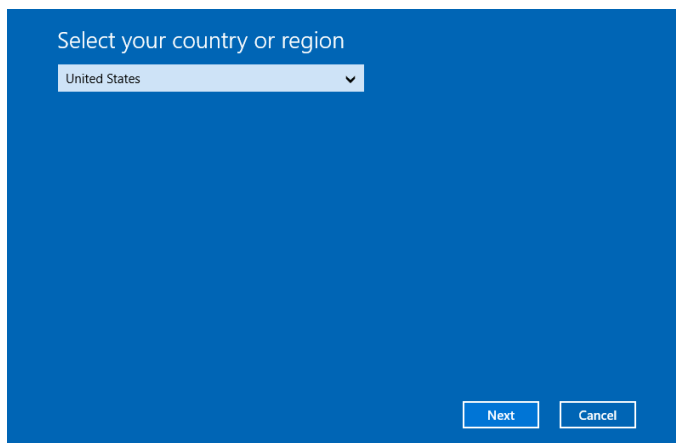
8. Right-click the lower left of the screen, and click **Run** from the menu displayed.



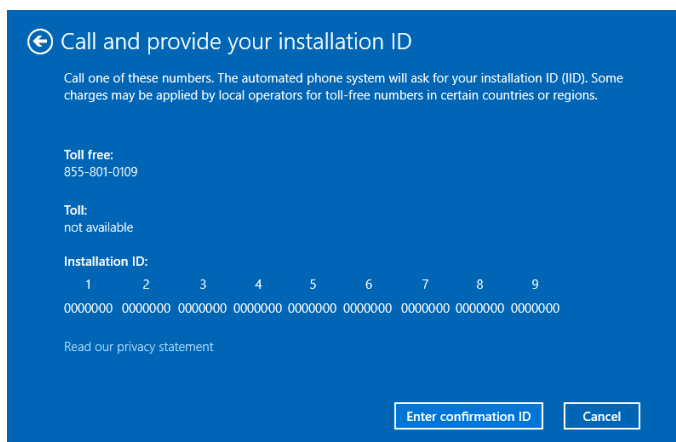
9. Type "slui 4", and then press <Enter> key.



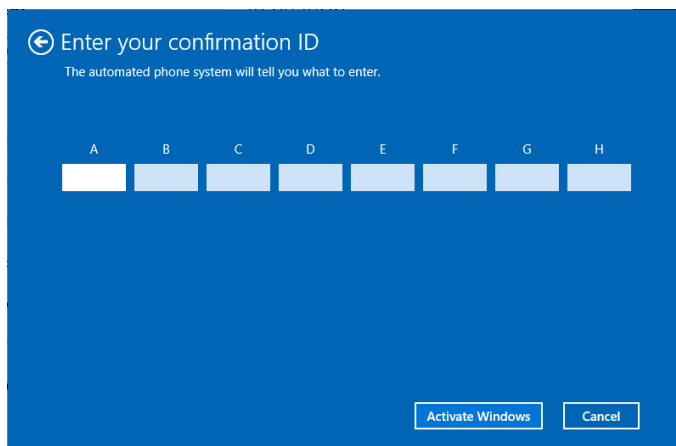
10. On the next screen, choose your country, and then click **Next**.



Get the installation ID required for license activation.



11. Call the Microsoft license activation hotline and then tell your installation ID.
Type the confirmation ID, and then click **Activate Windows**.



The authentication is now complete.

3.5.2 Server Core

1. Confirm if your license is activated.

At the command prompt, type the following command, and then press <Enter> key.

```
C:\Users¥administrator>slmgr -dli
```

When license authentication is required, go to the next step.

When your license is already authenticated, you can skip the next and the subsequent steps.

2. Change the product key.

Using Backup DVD-ROM:

Type the following command, and then press <Enter> key.

```
C:\Users¥administrator>slmgr -ipk <Product key on COA label>
```

Using Windows Server 2022 DVD-ROM:

You do not need to change the product key.

Go to the next step

3. Perform license authentication.

The server connects to the Internet:

License authentication is performed via the Internet.

Type the following command, and then press <Enter> key.

```
C:\Users¥administrator>slmgr -ato
```

This completes authentication.

The server does not connect to the Internet:

Use telephone for license authentication.

Type the following command to get an Install ID for authentication, and then press <Enter> key.

```
C:\Users\administrator>slmgr -dti
```

Acquire the installation ID required for license activation.

Refer to the file %systemroot%\system32\sppui\phone.inf to confirm the telephone number of Microsoft Licensing Center.

Call Microsoft Licensing Center and tell them your Install ID.

Type the confirmation ID you have received in the following command line, and then press <Enter> key.

```
C:\Users\administrator>slmgr -atp <Confirmation ID>
```

The authentication is now complete.

3.6 Setup of Windows Server 2022 NIC Teaming (LBFO)

Set up the network adapter teaming feature as shown below.

3.6.1 Launching the NIC teaming setup tool

1. Launch **Server Manager**.
2. Select **Local Server**.
3. In the **Properties** window, click **Enable** or **Disable** for **NIC teaming**.

The NIC teaming setup tool will launch.

Tips

The NIC teaming setup tool can also be launched by opening the **Run** dialog box, typing "lbfoadmin /server .", and then pressing <Enter> key.

3.6.2 Creating a team

Create a team by using the NIC teaming setup tool.

1. In the **Servers** section, select the name of the server to set up.
If there is only one server connected, the name of the server is selected automatically.
2. In the **Teams** section, under **Tasks**, select **New Team**. The **New Team** wizard then starts.
3. Type the name of the team to create, and then select the network adapter to include in the team from the **Member adapters** list.
4. Click **Additional properties**.
5. Specify the required settings, and then click **OK**.

Teaming mode

| | |
|---------------------------|--|
| Static Teaming | Configures static aggregation between the NIC and switches. |
| Switch Independent | Configures teaming on the NIC side without depending on the switch settings. |
| LACP | Configures dynamic aggregation between the NIC and switches. |

Load balancing mode

| | |
|---------------------|---|
| Address Hash | Distributes the load based on IP addresses and port numbers. |
| Hyper-V Port | Distributes the load to each of the virtual switch ports used by the virtual machines. |
| Dynamic | <ul style="list-style-type: none">• Distributes the load based on IP addresses and port numbers in sending.• Distributes the load same to "Hyper-V Port" in receiving. |

Standby adapter

Select one adapter to be set to standby mode from the adapters in the team.

Setting all adapters to active mode is also possible.

Primary team interface

Any VLAN ID can be specified for the primary team interface.

3.6.3 Removing a team

Remove a team by using the NIC teaming setup tool.

1. In the **Servers** section, select the name of the server to set up.
If there is only one server connected, the name of the server is selected automatically.
2. In the Teams section, select the team to remove.
3. In the Teams section, under **Tasks**, select **Delete**.
4. The message box to confirm appears, then click Delete team.

3.6.4 Notes and restrictions

- NIC teaming on a guest OS is not supported.
- Teaming of virtual NICs on the host OS is not supported in the Hyper-V environment.
- When STP (Spanning Tree Protocol) is enabled on network switch ports to which network adapters of the team are connected, network communications may be disrupted. Disable STP, or configure "PortFast" or "EdgePort" to the ports.
* About setting the network switch of the connection destination, see the manual of the network switch.
- All NICs in the team must be connected to the same subnet.
- Teaming of different speed NICs is not supported.
- Teaming of different vendor's NICs is not supported.
- When teaming is configured in a Network Load Balancing (NLB) environment, you should select multicast mode on the NLB cluster.
- When a team is removed, the following error message may be logged in the system event log.
You can safely ignore this error message.

| Level | Error |
|---------------|--|
| Source | Microsoft-Windows-NDIS |
| Event ID | 10317 |
| Task Category | PnP |
| Message | Miniport Microsoft Network Adapter Multiplexor Driver, {xxxxxxx-xxxx-xxxx-xxxx-xxxxxxxxxxxx}, had event Network Interface deleted while PNP Device still exists. Note that this event is provided for informational purpose and might not be an error always (Eg: In case of vSwitch which was recently un-installed or a LBFO team was removed) |

- In a Windows Server Failover Cluster environment, heartbeat interruption or failover may occur if you configure Active-Standby teaming. To avoid this, you should configure multiple NICs in Active Mode in a team so that all the NICs do not fail simultaneously.
- In Hyper-V environments, binding a teaming adapter to the virtual switch is deprecated.
Please use SET(Switch Embedded Teaming) when you use teaming in combination with a virtual switch.

Refer to the following website for the latest information.

<https://www.58support.nec.co.jp/global/download/w2022/index.html>

- [Technical Information] - [NIC Teaming (LBFO)]

3.7 Installing Applications

Some applications included in Starter Pack can be installed easily by performing the procedures described below. When installing these applications individually, see *the manual of each applications*. This feature is **only available on Desktop Experience**.

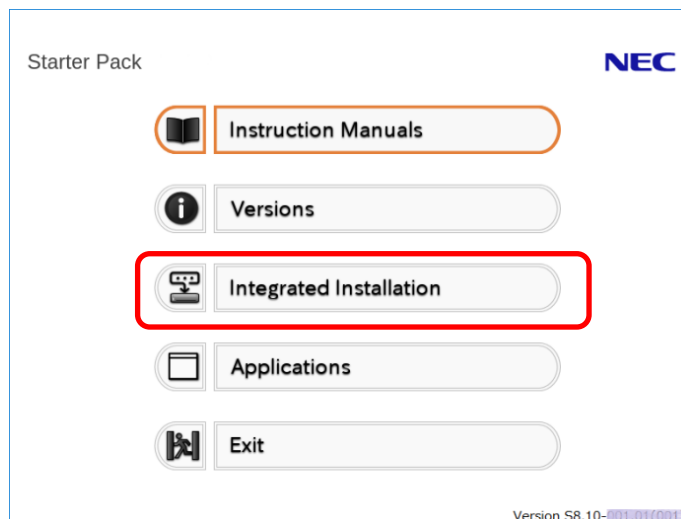
System reboot is required after installing applications.

Application can install using iLO remote console and iLO virtual media.

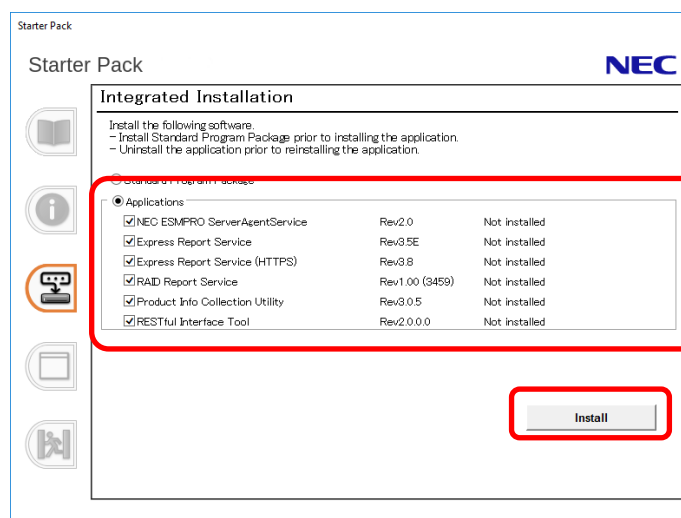
Tips

This function supports clean installation of applications only. If you re-install installed application, refer to *the manual of each applications*.

1. Sign-in to the Windows with an Administrators privilege.
2. Insert the Starter Pack DVD into the optical disk drive.
3. Run the **start_up.bat** under the root folder on DVD.
4. Click **Integrated Installation** on the menu.



5. On the following screen, choose the check boxes corresponding to the applications you want to install, and then click **Install**. The chosen applications are automatically installed.



Note

- Applications available for installation are chosen by default.
- If your system environment does not satisfy the prerequisite for an application, you cannot install it. For details, see the on-screen information and *the manual of each applications*.
- To collect product information using a device information collection utility, RESTful interface tool needs to be installed. If it is not installed, some logs required for the maintenance may not be gathered.
- If the following message displayed during installing applications, click **No** to continue process.

Stop running this script?

A script on this page is causing your web browser to run slowly.
If it continues to run, your computer might become unresponsive.

6. When a message indicating restart appears, click **OK** to restart the server.
7. See *the manual of each applications* to install the bundled software or confirm that the software is appropriate to your operating environment.

Now installation of applications is complete.

4. Setting up for Maintenance

We recommend setting up the following features for maintenance.

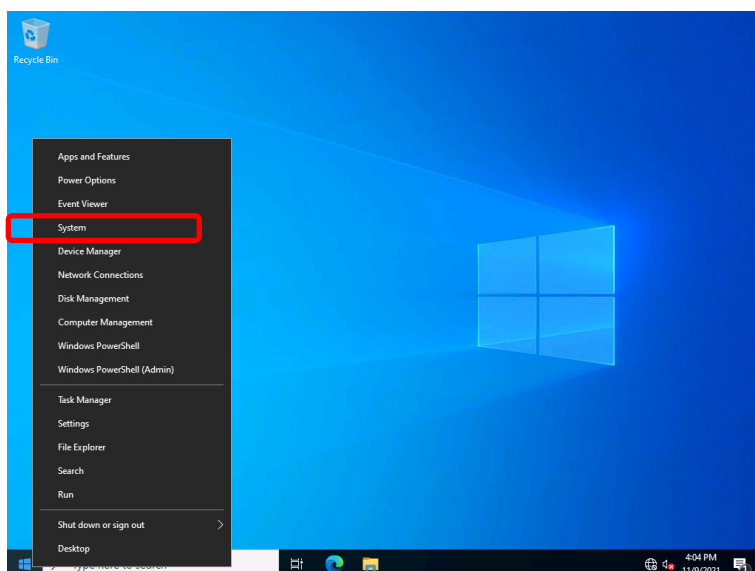
4.1 Specifying Memory Dump Settings (Debug Information)

This section explains the procedures for collecting a memory dump (debug information) in the server.

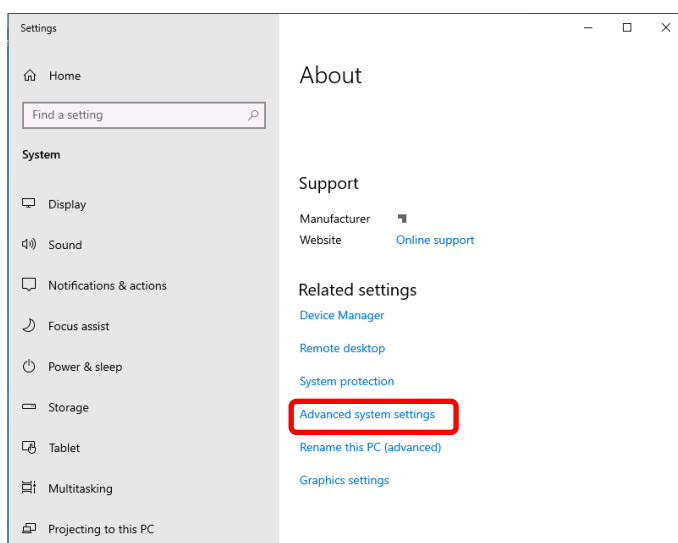
Important

When you restart the system to save the memory dump, a message informing you that the system is short of virtual memory might appear. Ignore this message and proceed with the restart. If you reset or restart the system again, the memory dump might not be saved normally.

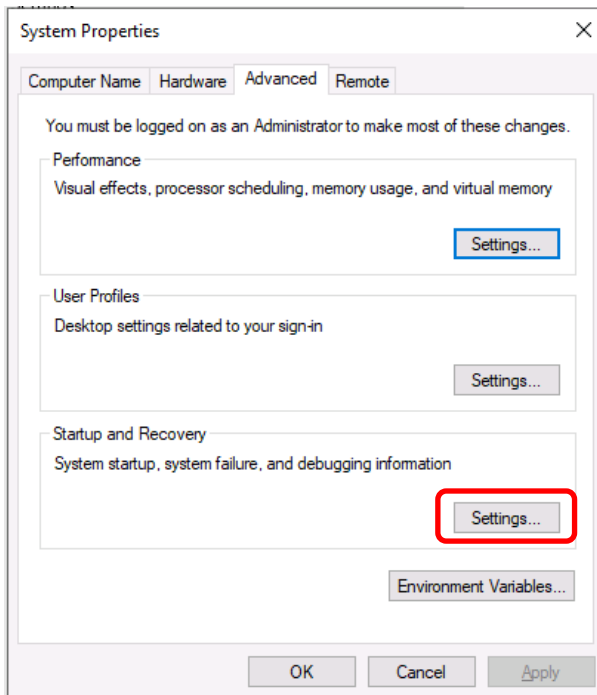
1. Right-click the left bottom of screen, and click **System** from the menu displayed.



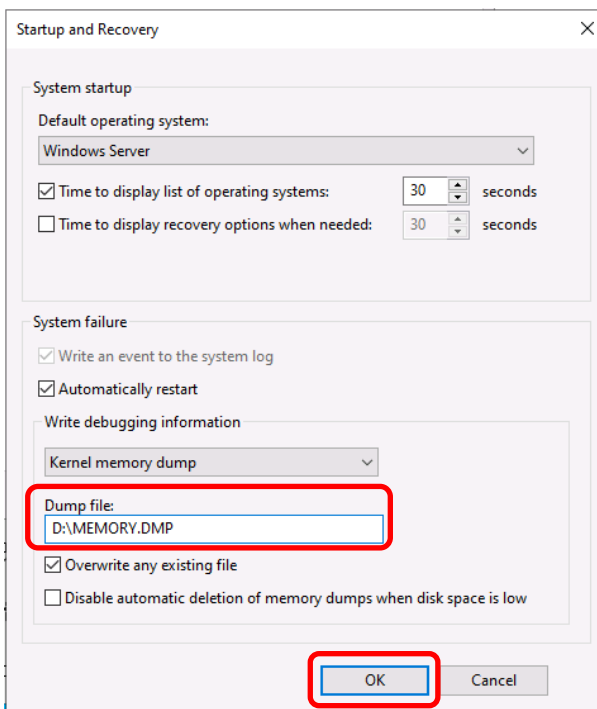
2. Click **Advanced system settings**.



3. In **Startup and Recovery**, click **Settings....**



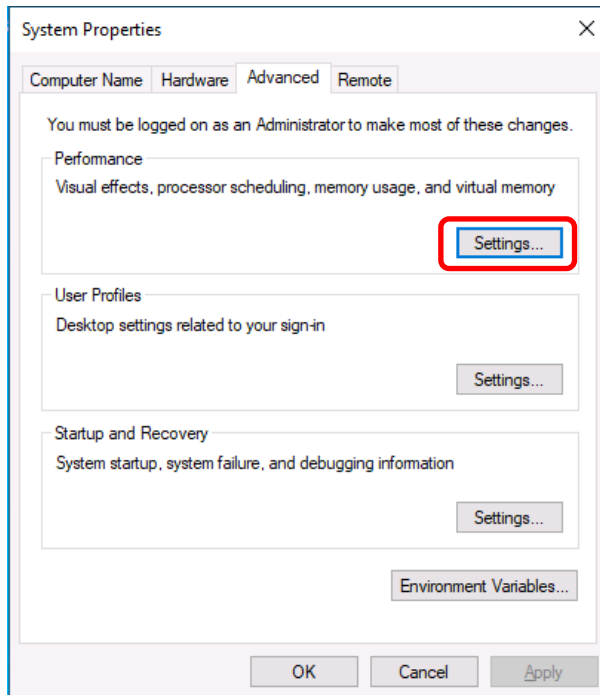
4. Type a file name to store the debug information in the **Dump file** text box, and then click **OK**.



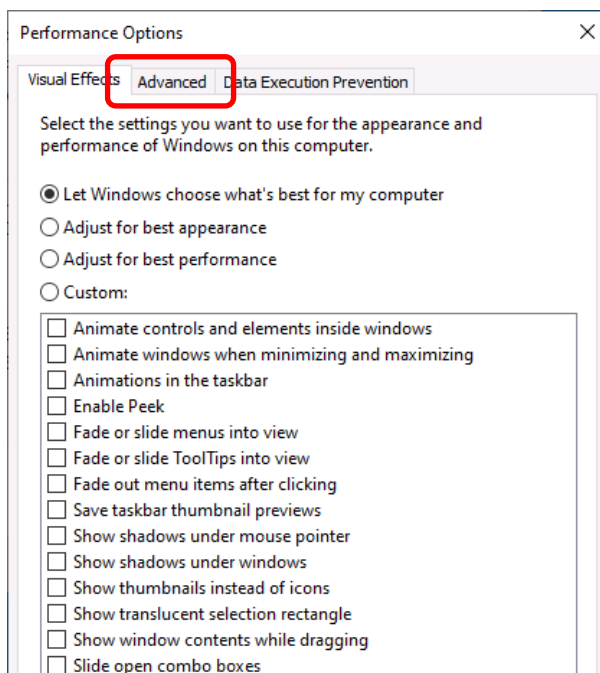
Note the following when specifying a dump file:

- We recommend specifying Kernel memory dump for Write debugging information.
- Specify a drive that has free space of "installed memory size + 400 MB" ("installed memory size + 1,800 MB" when the installed memory size is 4TB or more) or more.
- The size of the debug information (memory dump) changes if DIMM is added. Make sure that the free space of the drive to store the debug information (memory dump) is sufficient.

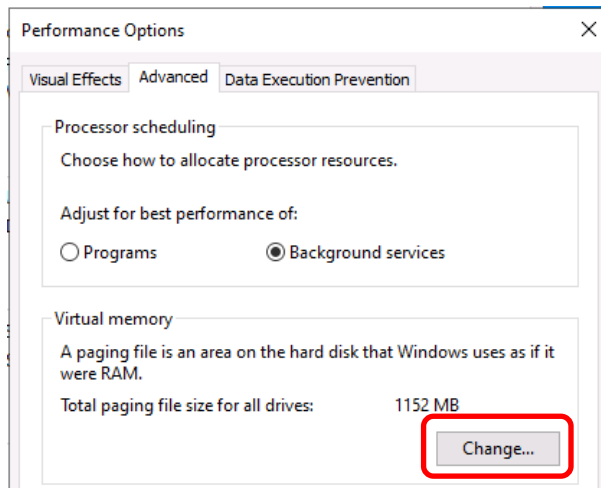
5. In **Performance**, click **Settings**.



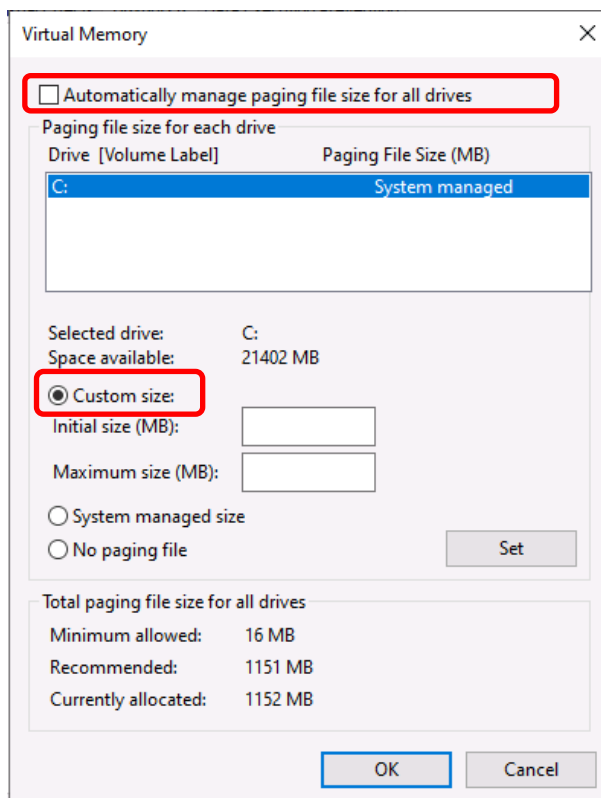
6. Click the **Advanced** tab on the **Performance Options** window.



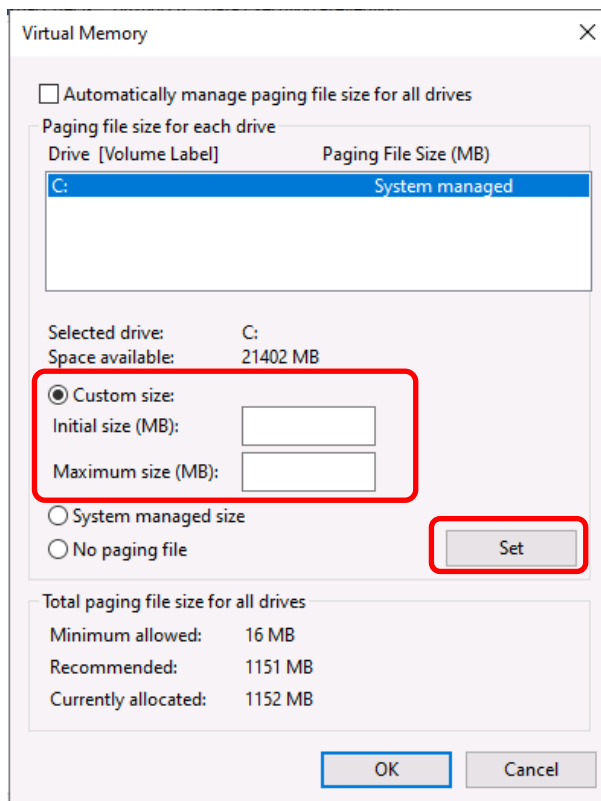
7. In **Virtual memory**, click **Change....**



8. Clear the **Automatically manage paging file size for all drives** check box, and then click **Custom size**.



9. In **Paging file size for each drive**, enter the value equal or larger than the recommended value for **Initial size**, and the value larger than **Initial size** for **Maximum size**, and then click **Set**.



Note the following when specifying a paging file size:

- The paging file is used to collect debug information (dump file). The boot volume must have a paging file of its initial size ("total size of physical memory" + 400 MB (total size of physical memory + 1,800MB when the total size is 4 TB or more) is enough to store the dump file. Make sure to specify a sufficient paging file size.
- See "System Partition Size" in *Chapter 1 (3.1 Precautions of Windows Server 2022 Installation)* for recommended value.
- When DIMM is added, re-specify the paging file according to the increased memory size.
- If an error occurs in setting the paging file to a drive exceeding 2TB, close [Virtual memory] and [Performance Options], and then set in the following way.

ex. Setting the paging file in drive C with 4096 MB as Initial size, 8192MB as Maximum size.

1. Start command prompt as Administrator and execute the following command.

```
wmic computersystem set AutomaticManagedPagefile=false
wmic pagefileset delete
```

2. Restart the Windows system.

3. Start command prompt as Administrator and execute the following command.

```
wmic pagefileset create name="C:\pagefile.sys"
wmic pagefileset set InitialSize=4096, MaximumSize=8192
```

4. Restart the Windows system.

10. Click **OK**.

If a message to restart Windows appears, restart the system according to on-screen message.

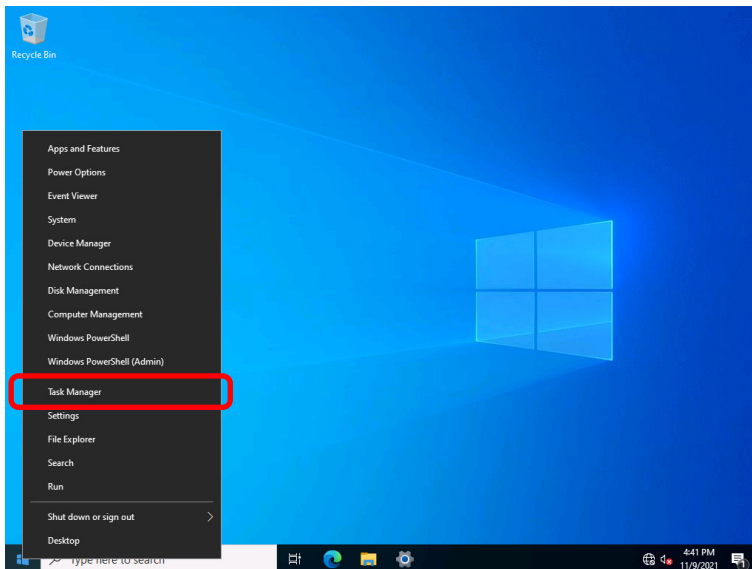
Specification of the memory dump settings is now complete.

4.2 How to Create a User-mode Process Dump File

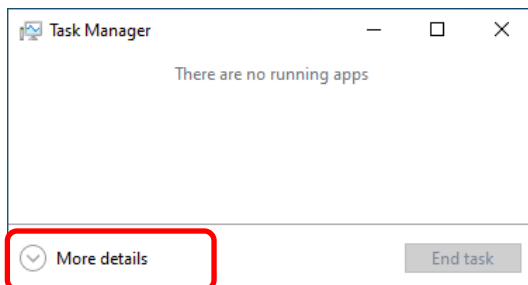
The user-mode process dump file records information when an application error occurs.

If an application error occurs, get user-mode process dump information using the following procedures without closing the pop-up window that reported the error:

1. Right-click an empty area of the taskbar and then click **Task Manager** or press <Ctrl> + <Shift> + <Esc> keys to start Task Manager.



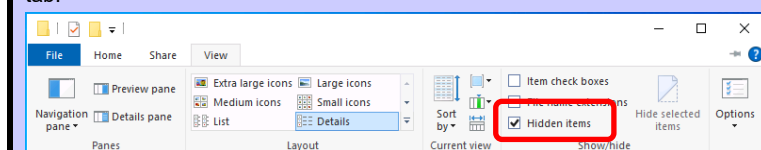
2. Click **More details**.



3. Click the **Processes** tab.
4. Right-click the name of the process that you want to get dump information for, and then click **Create Dump File**.
5. A dump file for the process is created in the following folder:
C:\Users\user name\AppData\Local\Temp

Tips

If the folder is not displayed, open Explorer, select **Hidden items** in the **View** tab.



Get the user-mode process dump file from the folder shown in step 5.

5. Backup of system information

After environment building, back up the setting information of the system in advance of any troubles.

- Back up system settings contained in system utility.

See *User's Guide (2. Description on System Utility)* for details of system utility.

- Back up detail information of iLO 5.

See "*iLO 5 User's Guide*" for details of procedure.

Maintenance

This chapter explains maintenance of server, and what actions are to be taken in case of trouble when operating this server.

1. Failure Information

Describes how to collect the failure information. See this section in case of a failure.

2. Troubleshooting

Describes how to troubleshoot the server. See this section if you suspect a failure.

3. Windows System Recovery

Describes Windows recovery setup. See this section if the Windows is corrupt.

1. Failure Information

If the server does not work normally, you can collect failure information by using the following way.

The failure information to be described is to be collected only at the request of your sales representative.

Important

Do not reset during dumping memory or restarting the server even if the message of virtual memory shortage appears.

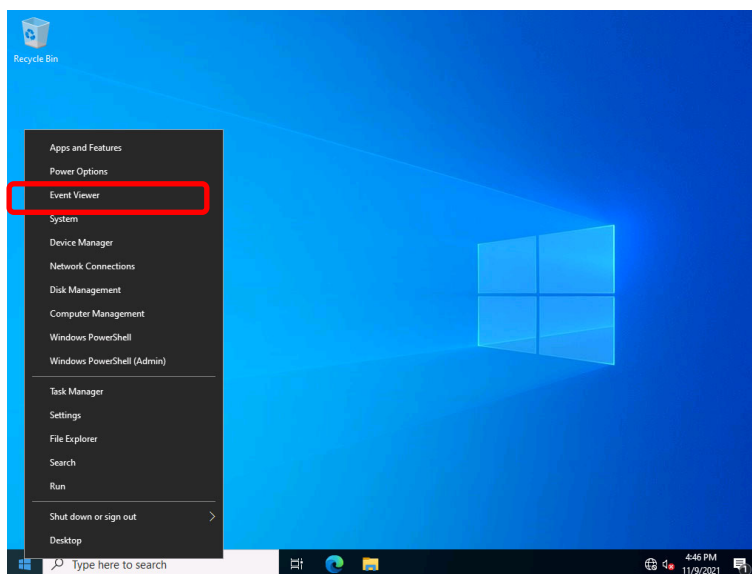
1.1 Collecting Event Logs

To collect the various event logs of the server, follow the steps below.

Tips

If a STOP error, system error, or stall occurs, restart the system and then follow the steps below.

1. Right-click the left bottom of screen, and click **Event Viewer** from the menu displayed.

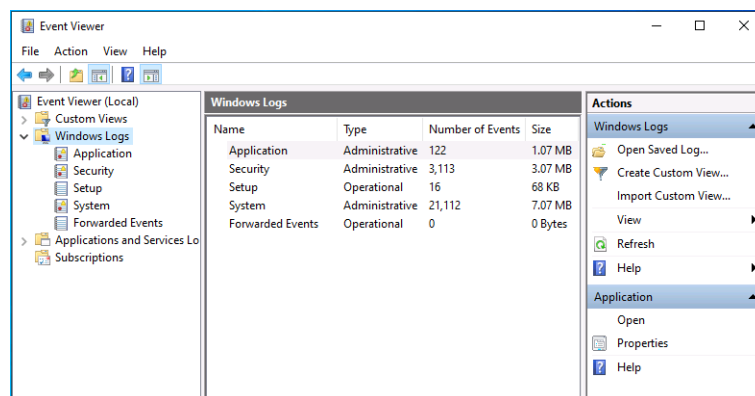


2. Select the type of log in **Windows Logs**.

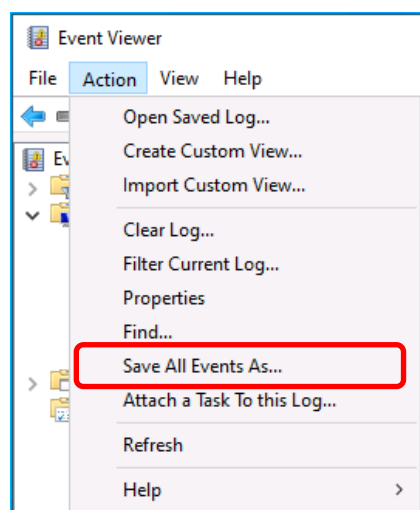
Application records events related to running applications.

Security records events related to security.

System records events that occur in Windows system components.



3. Click **Save All Events As...** from **Action** menu.



4. Type the file name of the archived log in **File name**.
5. Select the type of the log file you want to save in **Save as type**, and then click **Save**.

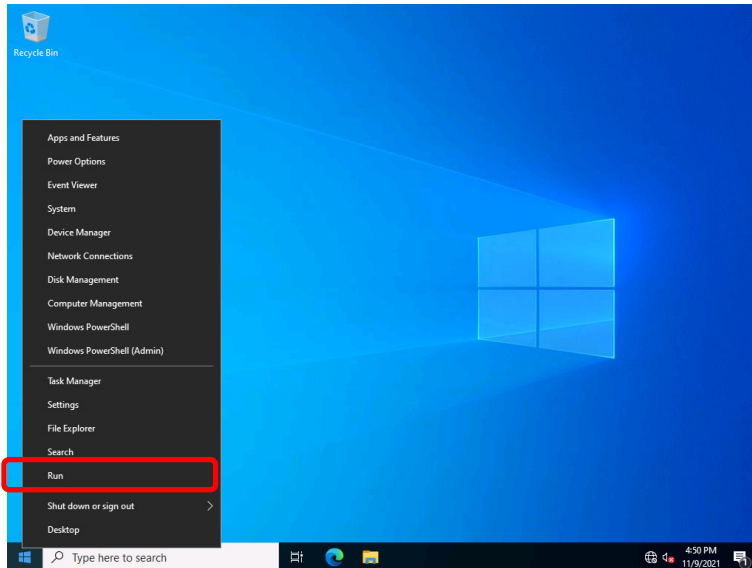
1.2 Collecting Configuration Information

This section describes how to collect hardware information or configuration.

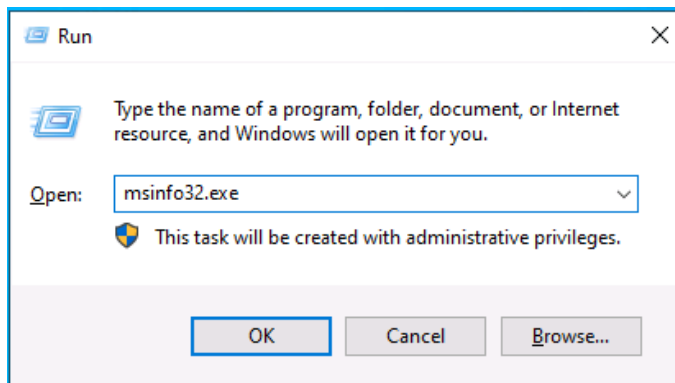
Tips

If a STOP error, system error, or stall occurs, restart the system and then follow the steps below.

1. Right-click the left bottom of screen, and click **Run** from the menu displayed.



2. Type `msinfo32.exe`, and then press <Enter> key.



System Information starts.

3. Click **Export** from **File** menu.
4. Type a file name to save in **File Name**, and then Click **Save**.

1.3 Collecting User-Mode Process Dump

The user-mode process dump is the failure information related to application errors.

For details, see *Chapter 1 (4.2 How to Create a User-Mode Process Dump File)*.

1.4 Collecting Memory Dump

If an error occurs, the dump file will be saved to get necessary information. You can specify any location for saving the diagnostic information. For details, see *Chapter 1 (4.1 Specifying Memory Dump Settings (Debug Information))*.

Consult with your sales representative before dumping the memory. Dumping the memory while the server is in operating normally will affect the system operation.

Important

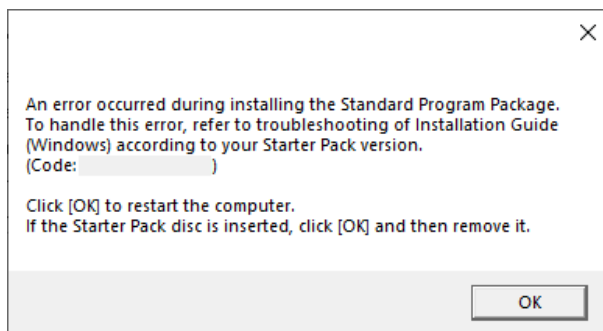
Do not reset during dumping memory or resetting the server even if the message of virtual memory shortage appears.

2. Troubleshooting

If this system does not operate as intended, check it according to the contents of your document before sending it for repair. If an item in the checklist corresponds with a problem you are experiencing, follow the processing instructions. The other contents check Maintenance Guide.

2.1 Problem of OS

[?] **Unable to apply Standard Program Package**



- According to your environment, individual installation of firmware and drivers may be required before applying Standard Program Package.
- Refer to Chapter 1 (3.4 Standard Program Package Installation) for details.
- When the problem does not solve, collect log by following procedure to request survey through the supplier.

1. Sign-in to the Windows with an Administrators privilege.
2. Set the Starter Pack DVD to the drive.
3. Run the `\packages\gatherlog.bat` on the DVD.
4. Collect generated Zip file.

3. Windows System Recovery

Recover the Windows system by using the following instructions if the system does not work normally.

Note

- After recovering Windows, install drivers and the Starter Pack referring to *Chapter 1 (3.4 Setup of Device Drivers)* and *Chapter 1 (3.3 Standard Program Package Installation)*.
- If the Windows system cannot find hard disk drives, you cannot recover the Windows system.

3.1 Recovery of Windows Server 2022

If the Windows does not start normally, you can recover it using the feature of the Windows installation media. To run this feature, start the installation media, and then choose **Repair your computer** in the setup wizard. We recommend that this option is performed by the system administrator.

If the RAID controller driver is required, take the following steps:

Note

When the server configures an on-board RAID controller and an internal optical disk drive, load the driver from a removable media.

Copy the following folder from Starter Pack DVD to a removable media in advance.

```
<Starter Pack>\software\010\drivers\sw_raid1_driver
```

1. After turning on the server or restarting the server, insert the OS installation media into the server.
2. Press <F11> key during POST to start Boot Menu.
In **One-Time Boot Menu**, select the optical disk drive to which OS installation media is set by Step 1, and then exit the menu.
3. When the message "Press any key to boot from CD or DVD..." appears on the upper of the screen, press <Enter> key to boot from the media.
While boot-up proceeds, the message "Loading files..." appears.
4. Choose **Repair your computer** in the setup wizard.
5. Click **Troubleshoot**.
6. Click **Command Prompt**.
7. After setting Starter Pack DVD to the drive, run the following command to load the driver:
("D:" means a drive name of DVD and this name depends on your system)

For on-board RAID controller:

```
drvload D:\software\010\drivers\sw_raid1_driver\ws2022\SmartDQ.inf
```

Tips

- When the server configures an on-board RAID controller and an internal optical disk drive, load the driver from a removable media. ("E:" means a drive name of removable media and this name depends on your system)

```
drvload E:\sw_raid1_driver\ws2022\SmartDQ.inf
```

- The volume label for each drive can be checked from the display result of the `dir` command.

Example: `dir C:\`

8. Exit the command prompt.

The driver installation is completed.

Appendix

1. List of Windows Event Logs

Shows a list of Windows event logs.

1. List of Windows Event Logs

| ID | Source | Level | Message (Description) |
|----|--------------------------------|-------|-----------------------|
| | Timing when an event is logged | | Action |

All Windows OS "System Log"

| | | | |
|----|--|---------|--|
| 1 | VDS Basic Provider | Error | Unexpected failure. Error code : 32@01000004 |
| | At the time of a USB Device connection | | When it's at the time of a USB Device connection, it's no problem. |
| 10 | Smart Update Manager System Log | Warning | The description for Event ID 10 from source Smart Update Manager System Log cannot be found. Either the component that raises this event is not installed on your local computer or the installation is corrupted. You can install or repair the component on the local computer. If the event originated on another computer, the display information had to be saved with the event. The following information was included with the event: Disabling blocked firewall rules |
| | When applying Standard Program Package | | This event may be registered when Firewall is enabled, but this does not affect system operation. |
| 11 | Elxhc | Error | The driver detected a controller error on Device\RaidPortX. (X is any number) |
| | When applying Standard Program Package | | This event does not affect system operation. |
| 51 | Cdrom | Warning | Error detected on the device \Device\CdRom0 during the paging operation. |
| | When installing an OS | | This event may be registered in the event viewer, but this does not affect system operation. |
| 56 | Application Popup | Error | The description for Event ID 56 from source Application Popup cannot be found. Either the component that raises this event is not installed on your local computer or the installation is corrupted. You can install or repair the component on the local computer. If the event originated on another computer, the display information had to be saved with the event. The following information was included with the event: PCI XXXXXXXXXXXXXXXXXXXX The message resource is present but the message was not found in the message table. * A different number replaces X depending on the connection status of LAN controller. |
| | When installing an OS, starting system, or applying Starter Pack | | When multiple LAN controller are loaded it is registered, but does not affect system operation. |

| ID | Source | Level | Message (Description) |
|----|--------------------------------|-------|-----------------------|
| | Timing when an event is logged | | Action |

All Windows OS "System Log"

| | | | |
|------|--|---------|---|
| 56 | Application Popup | Error | <p>The description for Event ID 56 from source Application Popup cannot be found. Either the component that raises this event is not installed on your local computer or the installation is corrupted. You can install or repair the component on the local computer.</p> <p>If the event originated on another computer, the display information had to be saved with the event.</p> <p>The following information was included with the event:</p> <p>SCSI XXXXXXXXXXXXXXXXXXXX</p> <p>The message resource is present but the message was not found in the message table.</p> <p>* A different number replaces X depending on the connection status of RAID controller and SAS controller.</p> |
| | When installing an OS, starting system, or applying Starter Pack | | When multiple RAID controller or SAS controller are loaded it is registered, but does not affect system operation. |
| 129 | SmartPqi | Warning | Reset was issued to the device \Device\RaidPort(x). (x is any number) |
| | While the system is running | | Even if the message is registered in the log, there is no problem because the OS has successfully completed the retry. You don't need any changes. |
| 157 | Disk | Warning | Disk x is suddenly removed. |
| | When creating a RAID | | If you create new RAID on Windows, this event can be registered, but this does not affect the system operation. |
| 1407 | ESMCommonService | Error | <p>This is the event which occurred between this system start-up and the last system stop or system shutdown.</p> <p>Date : YYYY-MM-DD hh:mm:ss</p> <p>Event Class : 0x11</p> <p>Event Code : 0x0A</p> <p>Status : Critical</p> <p>Description : xxxxx Connectivity status changed to xxxxx for adapter in slot x, port x</p> |
| | When starting system, or applying Standard Program Package | | This event does not affect system operation. |

| ID | Source | Level | Message (Description) |
|----|--------------------------------|-------|-----------------------|
| | Timing when an event is logged | | Action |

All Windows OS "System Log"

| | | | |
|------|--|-------|--|
| 1407 | ESMCommonService | Error | <p>This is the event which occurred between this system start-up and the last system stop or system shutdown.</p> <p>Date : YYYY-MM-DD hh:mm:ss</p> <p>Event Class : 0x11</p> <p>Event Code : 0x0C</p> <p>Status : Critical</p> <p>Description : Redundancy status changed to xxxxx by adapter in slot x, port x</p> |
| | When starting system, or applying Standard Program Package | | This event does not affect system operation. |
| 1407 | ESMCommonService | Error | <p>This is the event which occurred between this system start-up and the last system stop or system shutdown.</p> <p>Date : YYYY-MM-DD hh:mm:ss</p> <p>Event Class : 0x11</p> <p>Event Code : 0x0D</p> <p>Status : Critical</p> <p>Description : All links are down in adapter xxxxx in slot x</p> |
| | When starting system, or applying Standard Program Package | | This event does not affect system operation. |
| 4367 | Agentless Management Service | Error | <p>Description of Event ID 4367, IML Class Code 17, Event Code 13:</p> <p>All links are down in adapter xxxxx in slot x. Check the connection to the adapter and validate the connectivity from the server to any external device, including the cabling. If no problems are found, the adapter or other connectivity device may need replacement.</p> |
| | When installing an OS, starting system, or applying Standard Program Package | | This event does not affect system operation. |
| 4367 | Agentless Management Service | Error | <p>Description of IML Event ID 4367, Class Code 17, Event Code 12:</p> <p>Redundancy status changed to decreased by adapter in slot x, port x. If redundancy decreased, check the connection to the adapter and validate the connectivity from the server to any external device, including the cabling. If no problems are found, the adapter or other connectivity device may need replacement.</p> |
| | When installing an OS, starting system, or applying Standard Program Package | | This event does not affect system operation. |
| 4367 | Agentless Management Service | Error | <p>Description of IML Event ID 4367, Class Code 17, Event Code 10:</p> <p>xxxxx Connectivity status changed to Link Failure for adapter in slot x, port x. If the connection is lost, then check the physical connection from the server to its destination device such as interconnect, blade, switch etc, including any cables. Refer to the NIC issues flowchart in the Troubleshooting Guide for more information.</p> |
| | When installing an OS, starting system, or applying Standard Program Package | | This event does not affect system operation. |

| ID | Source | Level | Message (Description) |
|----|--------------------------------|-------|-----------------------|
| | Timing when an event is logged | | Action |

All Windows OS "System Log"

| | | | |
|-------|--|-------|--|
| 7000 | Service Control Manager | Error | QLogic Fibre Channel Service service failed to start due to the following error: the system cannot find the file specified |
| | Applying Standard Program Package | | This event does not affect system operation. |
| 37130 | ESMCommonService | Error | Date : YYYY-MM-DD hh:mm:ss Event Class : 0x11 Event Code : 0x0A Status : Critical Description : xxxxx Connectivity status changed to xxxxx for adapter in slot x, port x |
| | When starting system, or applying Standard Program Package | | This event does not affect system operation. |
| 37132 | ESMCommonService | Error | Date : YYYY-MM-DD hh:mm:ss Event Class : 0x11 Event Code : 0x0C Status : Critical Description : Redundancy status changed to xxxxx by adapter in slot x, port x |
| | When starting system, or applying Standard Program Package | | This event does not affect system operation. |
| 37133 | ESMCommonService | Error | Date : YYYY-MM-DD hh:mm:ss Event Class : 0x11 Event Code : 0x0D Status : Critical Description : All links are down in adapter xxxxx in slot x |
| | When starting system, or applying Standard Program Package | | This event does not affect system operation. |

| ID | Source | Level | Message (Description) |
|----|--------------------------------|-------|-----------------------|
| | Timing when an event is logged | | Action |

Windows Server 2022 "System Log"

| | | | |
|----|---|---------|--|
| 2 | bnxtnd | Warning | xxxxx #xx : The network link is down. Check to make sure the network cable is properly connected. * x is a different display name depending on the LAN board. |
| | When installing an OS, starting system, or applying Standard Program Package | | This event does not affect system operation. |
| 4 | b57nd60a | Warning | Broadcom NetXtreme Gigabit Ethernet #xx: The network link is down. Check to make sure the network cable is properly connected. |
| | When installing an OS, starting system, or applying Standard Program Package | | This event does not affect system operation. |
| 4 | l2nd | Warning | xxxxx #xx : The network link is down. Check to make sure the network cable is properly connected. * x is a different display name depending on the LAN board. |
| | When installing an OS, starting system, or applying Standard Program Package | | This event does not affect system operation. |
| 4 | l2nd2 | Warning | xxxxx #xx: The network link is down. Check to make sure the network cable is properly connected. * x is a different display name depending on the LAN board. |
| | When installing an OS, starting system, or applying Standard Program Package | | This event does not affect system operation. |
| 4 | q57nd60a | Warning | xxxxx #xx : The network link is down. Check to make sure the network cable is properly connected. * x is a different display name depending on the LAN board. |
| | When installing an OS, starting system, or applying Standard Program Package | | This event does not affect system operation. |
| 9 | bxfcoc | Warning | The SAN link is down for port WWN XX:XX:XX:XX:XX:XX:XX:XX. Check to make sure the network cable is properly connected. (X is any number) |
| | When installing an OS, starting system, or applying Standard Program Package | | This event does not affect system operation. |
| 9 | qefcoc | Warning | The SAN link is down for port WWN XX:XX:XX:XX:XX:XX:XX:XX. Check to make sure the network cable is properly connected. (X is any number) |
| | When installing an OS, starting system, or applying Standard Program Package | | This event does not affect system operation. |
| 23 | bnxtnd | Error | xxxxx #xx : Firmware returned failure status. * x is a different display name depending on the LAN board. |
| | About N8104-213/215/217/219, when changing the link speed setting with the LAN cable and switching hub not connected, or when you restart the system in the state after changing the settings | | This event does not affect system operation. |

| ID | Source | Level | Message (Description) |
|----|--------------------------------|-------|-----------------------|
| | Timing when an event is logged | | Action |

Windows Server 2022 "System Log"

| | | | |
|----|--|---------|---|
| 26 | Bnxtnd | Warning | xxxxx #xx : Adapter Incompatible speed selection between Port 1 and Port 2. Reported link speeds are correct and might not match Speed and Duplex setting. * x is a different display name depending on the LAN board. |
| | About N8104-213/215217/219, when changing the link speed setting with the LAN cable and switching hub not connected, or when you restart the system in the state after changing the settings | | This event does not affect system operation. |
| 27 | e1i68x64 | Warning | xxxxx #xx Network link is disconnected. * x is a different display name depending on the LAN board. |
| | When installing an OS, starting system, or applying Standard Program Package | | This event does not affect system operation. |
| 27 | e1rexpress | Warning | xxxxx #x Network link is disconnected. * x is a different display name depending on the LAN board. |
| | When installing an OS, starting system, or applying Standard Program Package | | This event does not affect system operation. |
| 27 | i40ea | Warning | xxxxx #xx Network link is disconnected. * x is a different display name depending on the LAN board. |
| | When installing an OS, starting system, or applying Standard Program Package | | This event does not affect system operation. |
| 27 | i40eb | Warning | xxxxx #xx Network link is disconnected. * x is a different display name depending on the LAN board. |
| | When installing an OS, starting system, or applying Standard Program Package | | This event does not affect system operation. |
| 27 | i40ei68 | Warning | xxxxx #xx Network link is disconnected. * x is a different display name depending on the LAN board. |
| | When installing an OS, starting system, or applying Standard Program Package | | This event does not affect system operation. |
| 27 | icea | Warning | xxxxx #xx Network link is disconnected. * x is a different display name depending on the LAN board. |
| | When installing an OS, starting system, or applying Standard Program Package | | This event does not affect system operation. |
| 27 | ixgbs | Warning | xxxxx #xx Network link is disconnected. * x is a different display name depending on the LAN board. |
| | When installing an OS, starting system, or applying Standard Program Package | | This event does not affect system operation. |

| ID | Source | Level | Message (Description) |
|----|--------------------------------|-------|-----------------------|
| | Timing when an event is logged | | Action |

Windows Server 2022 "System Log"

| | | | |
|----|--|---------|---|
| 27 | ixi68x64 | Warning | xxxxx #xx Network link is disconnected. * x is a different display name depending on the LAN board. |
| | When installing an OS, starting system, or applying Standard Program Package | | This event does not affect system operation. |
| 38 | l2nd2 | Warning | xxxxx #xx : NDIS-Miniport is not compatible(older or newer) with bus driver. Hence only basic L2 functionality is available. * "x" depends on the system environment. |
| | When installing an OS, starting system, or applying Standard Program Package | | This event does not affect system operation. |
| 56 | qebdrv | Warning | NTPNP_PCIxxxx: RDMA has been implicitly disabled due to RDMA interface incompatibility between NDIS Miniport (ver x.xx.xx.x) and VBD (ver x.xx.x.x) drivers. VBD driver upgrade is required. * "x" depends on the system environment. |
| | When applying Standard Program Package | | This event does not affect system operation. |
| 57 | qebdrv | Warning | NTPNP_PCIxxxx: RDMA has been implicitly disabled due to RDMA interface incompatibility between NDIS Miniport (ver x.xx.xx.x) and VBD (ver x.xx.x.x) drivers. NDIS Miniport upgrade is required. * "x" depends on the system environment. |
| | When applying Standard Program Package | | This event does not affect system operation. |
| 69 | i40ea | Warning | HPE Ethernet xGb x-port xxxx Adapter The driver for the device detected a newer version of the NVM image than expected. Please install the most recent version of the network driver. **"x" depends on the system environment. |
| | When installing an OS, starting system, or applying Standard Program Package | | This event does not affect system operation. |
| 69 | i40eb | Warning | HPE Ethernet xGb x-port xxxx Adapter The driver for the device detected a newer version of the NVM image than expected. Please install the most recent version of the network driver. **"x" depends on the system environment. |
| | When installing an OS, starting system, or applying Standard Program Package | | This event does not affect system operation. |
| 69 | i40ei68 | Warning | xxxxx #xx The driver for the device detected a newer version of the NVM image than expected. Please install the most recent version of the network driver. * x is a different display name depending on the LAN board. |
| | When installing an OS, starting system, or applying Standard Program Package | | This event does not affect system operation. |

| ID | Source | Level | Message (Description) |
|----|--------------------------------|-------|-----------------------|
| | Timing when an event is logged | | Action |

Windows Server 2022 "System Log"

| | | | |
|-----|--|---------|---|
| 89 | icea | Error | xxxxx #xx PROBLEM: An unknown error occurred when loading the DDP package. Entering Safe Mode. ACTION: Restart the Adapter. If the problem persists, install the latest driver from "http://www.intel.com/support/go/network/adapter/home.htm". * x is a different display name depending on the LAN board. |
| | When installing an OS, starting system, or applying Standard Program Package | | This event does not affect system operation. |
| 91 | icea | Error | xxxxx #xx PROBLEM: The DDP package signature is not valid and cannot be loaded. Entering Safe Mode. ACTION: Install the latest driver from "http://www.intel.com/support/go/network/adapter/home.htm". * x is a different display name depending on the LAN board. |
| | When installing an OS, starting system, or applying Standard Program Package | | This event does not affect system operation. |
| 101 | i40eb | Warning | HPE Ethernet xGb x-port xxx Adapter PROBLEM: Flow Control disabled on this interface. For RDMA traffic, it is recommended that flow control be enabled end to end on all network interfaces and switches to avoid performance degradation from dropped packets. ACTION: Enable link level flow control or priority flow control for network direct port 445 on this interface. * "x" depends on the system environment. |
| | When installing an OS, starting system, or applying Standard Program Package | | This event does not affect system operation. After Standard Program Package is applied, this log will no longer be registered. |
| 101 | icea | Warning | Intel(R) Ethernet Network Adapter E810-XXV-2 xxxxx PROBLEM: Flow Control disabled on this interface. For RDMA traffic, it is recommended that flow control be enabled end to end on all network interfaces and switches to avoid performance degradation from dropped packets. ACTION: Enable link level flow control or priority flow control for network direct port 445 on this interface. * "x" depends on the system environment. |
| | When installing an OS, starting system, or applying Standard Program Package | | This event does not affect system operation. After Standard Program Package is applied, this log will no longer be registered. |
| 129 | SmartDqa | Warning | Reset was issued to the device \Device\RaidPort0. |
| | While the system is running | | Even if the message is registered in the log, there is no problem because the OS has successfully completed the retry. You don't need any changes. |

| ID | Source | Level | Message (Description) |
|----|--------------------------------|-------|-----------------------|
| | Timing when an event is logged | | Action |

Windows Server 2022 "System Log"

| | | | |
|-----|---|---------|--|
| 129 | SmartPqi | Warning | Reset was issued to the device \Device\RaidPort(x). (x is any number) |
| | While the system is running | | Even if the message is registered in the log, there is no problem because the OS has successfully completed the retry. You don't need any changes. |
| 134 | Microsoft-Windows-Time-Service | Warning | NtpClient was unable to set a manual peer to use as a time source because of DNS resolution error on 'time.windows.com,0x1'. NtpClient will try again in 15 minutes and double the reattempt interval thereafter. The error was: No such host is known. (0x80072AF9) |
| | While the system is running | | This event does not affect system operation if it is not recorded after connecting to the internet. |
| 157 | Disk | Warning | Disk x is suddenly removed. |
| | When creating a RAID | | If you create new RAID on Windows, this event can be registered, but this does not affect the system operation. |
| 225 | Kernel-PnP | Warning | The application YYY with process id XXX stopped the removal or ejection for the device ZZZ. * ZZZ : Instance name of the device YYY : Name of the process that was using the device XXX : ID of the process that was using the device |
| | When applying Standard Program Package | | This event does not affect system operation. |
| 262 | icea | Error | Intel(R) Ethernet Network Adapter E810-XXV-2 xxx PROBLEM: Module is not present. Possible Solution(s): Manually set the speed/duplex or use Intel(R) Ethernet Port Configuration Tool to change the port option. If the problem persists, use a cable/module that is found in the supported modules and cables list for this device. * "x" depends on the optional LAN board environment. |
| | When SFP+/SFP28 module (N8104-189/190) or DA cable disconnected from optional LAN board (N8104-208/212). | | Confirm the SFP+/SFP28 module (N8104-189/190) or DA cable. |
| 280 | Microsoft-Windows-Hyper-V-VmSwitch | Warning | VMS Utilization Plan Vport QueuePairs adjusted from requested number (xx) to actual (xx). Reason:The number requested exceeds the maximum QPs per VPort supported by physical NIC. NIC Name:./DEVICE/{xxxxxxxx-xxxx-xxxx-xxxx-xxxxxxxxxxxx} (Friendly Name: xxxxx #xx). * x is a different depending on the LAN board. |
| | When you create a virtual switch using the Switch Embedded Teaming (SET) feature. When virtual switches using the Switch Embedded Teaming (SET) feature is setting to a virtual machine and the virtual machine or Hyper-V host is rebooted. | | This event does not affect system operation. |

| ID | Source | Level | Message (Description) |
|----|--------------------------------|-------|-----------------------|
| | Timing when an event is logged | | Action |

Windows Server 2022 "System Log"

| | | | |
|-------|--|---------|---|
| 1284 | icea | Error | xxxxx #xx PROBLEM: DDP package failed. Possible Solution: Update to latest base driver and DDP package. * x is a different display name depending on the LAN board. |
| | When installing an OS, starting system, or applying Standard Program Package | | This event does not affect system operation. |
| 7023 | Service Control Manager | Error | "xxxxxxx service terminated with the following error: A device attached to the system is not functioning." |
| | When running an OS for the first time | | This event does not affect system operation if it is recorded only on the first startup and not recorded repeatedly. |
| 7030 | Service Control Manager | Error | The Printer Extensions and Notifications service is marked as an interactive service. However, the system is configured to not allow interactive services. This service may not function properly. |
| | When running an OS for the first time | | This event does not affect system operation if it is recorded only on the first startup and not recorded repeatedly. |
| 10010 | Microsoft-Windows-DistributedCOM | Error | The server {XXXXXXXX-XXXX-XXXX-XXXX-XXXXXXXXXXXX} did not register with DCOM within the required timeout. |
| | While the system is running | | This event does not affect system operation. |
| 10016 | Microsoft-Windows-DistributedCOM | Warning | The application-specific permission settings do not grant Local Launch permission for the COM Server application with CLSID {*****} and APPID {*****} to the user ***** SID (*****) from address LocalHost (Using LRPC) running in the application container Unavailable SID (Unavailable). This security permission can be modified using the Component Services administrative tool. |
| | When installing an OS, starting system, or applying Standard Program Package | | This event does not affect system operation. |
| 10149 | Microsoft-Windows-WinRM | Warning | The WinRM service is not listening for WS-Management requests. |
| | When restarting an OS | | There is no problem to ignore it when WinRM event 10148 (The WinRM service is not listening for WS-Management requests.) is registered after soon. |

| ID | Source | Level | Message (Description) |
|----|--------------------------------|-------|-----------------------|
| | Timing when an event is logged | | Action |

Windows Server 2022 "Application Event Log"

| | | | |
|------|---|---------|---|
| 86 | Microsoft-Windows-Certificate ServicesClient-CertEnroll | Error | SCEP Certificate enrollment initialization for XXXXXXXX via https://IFX-KeyId-5d0815951f5f60638a69e7252f3ec4becd7554b2.microsoftaik.azure.net/templates/Aik/scep |
| | When starting system. | | This event does not affect system operation. This event may be registered on the system that TPM is installed and has no connectivity to the internet. |
| 1015 | Microsoft-Windows-Security-SPP | Error | Detailed HRESULT. Returned hr=0xC004F022, Original hr=0x***** |
| | When restarting an OS | | This event does not affect system operation if it is not recorded repeatedly after activating the Windows. |
| 3007 | EvtAgnt | Warning | Error opening event log file Parameters. Log will not be processed. Return code from OpenEventLog is 87. |
| | When SNMP is effective | | Every restarting it's registered, it's no problem. |
| 3007 | EvtAgnt | Warning | Error opening event log file State. Log will not be processed. Return code from OpenEventLog is 87. |
| | When SNMP is effective | | Every restarting it's registered, it's no problem. |
| 8198 | Microsoft-Windows-Security-SPP | Error | License Activation (slui.exe) failed with the following error code: hr=0x***** Command-line arguments: RuleId=***** |
| | When restarting an OS | | This event does not affect system operation if it is not recorded repeatedly after activating the Windows. |

| ID | Source | Level | Message (Description) |
|----|--------------------------------|-------|-----------------------|
| | Timing when an event is logged | | Action |

Windows Server 2022 "Applications and Services Logs"

| | | | |
|-----|--|---------|--|
| 21 | Microsoft-Windows-AppModel-Runtime | Error | CreateAppContainerProfile failed for AppContainer onecore\ds\security\gina\profile\profext\appcontainer.cpp Line:1862 Usermode Font Driver Host microsoft.windows.fontdrvhost with error 0x8007000A. |
| | When installing an OS | | This event does not affect system operation if it is not recorded repeatedly. |
| 66 | Microsoft-Windows-AppModel-Runtime | Error | Failed with 0x57 retrieving AppModel Runtime status for package Windows for user *****. |
| | When installing an OS | | This event does not affect system operation if it is recorded only on the first startup and not recorded repeatedly. |
| 200 | Microsoft-Windows-DeviceSetupManager | Warning | A connection to the Windows Update service could not be established. |
| | While the system is running | | This event does not affect system operation if it is not recorded after connecting to the internet. |
| 201 | Microsoft-Windows-DeviceSetupManager | Warning | A connection to the Windows Metadata and Internet Services (WMIS) could not be established. |
| | While the system is running | | This event does not affect system operation if it is not recorded after connecting to the internet. |
| 202 | Microsoft-Windows-DeviceSetupManager | Warning | The Network List Manager reports no connectivity to the internet. |
| | While the system is running | | This event does not affect system operation if it is not recorded after connecting to the internet. |
| 215 | Microsoft-Windows-AppReadiness | Error | Failed with 0x57 retrieving AppModel Runtime status for package Windows for user *****. |
| | When installing an OS | | This event does not affect system operation if it is recorded only on the first startup and not recorded repeatedly. |
| 360 | Microsoft-Windows-User Device Registration | Warning | Windows Hello for Business provisioning will not be launched. Device is AAD joined (AADJ or DJ++): Not Tested User has logged on with AAD credentials: No Windows Hello for Business policy is enabled: Not Tested Windows Hello for Business post-logon provisioning is enabled: Not Tested Local computer meets Windows hello for business hardware requirements: Not Tested User is not connected to the machine via Remote Desktop: Yes User certificate for on premise auth policy is enabled: Not Tested Machine is governed by none policy. |
| | When restarting an OS | | There is no problem when it occurs at the environment that is not registered to Microsoft Azure AD. |

Revision Record

| Document Number | Date | Notes |
|-------------------|----------------|--|
| CBZ-002473-290-00 | September 2022 | The first edition |
| CBZ-002473-290-01 | October 2022 | Addition of Supported model Express5800/R120h-1E Express5800/R120h-2E Express5800/T120h |
| | | |
| | | |