

## Steps to update firmware by Starter Pack DVD

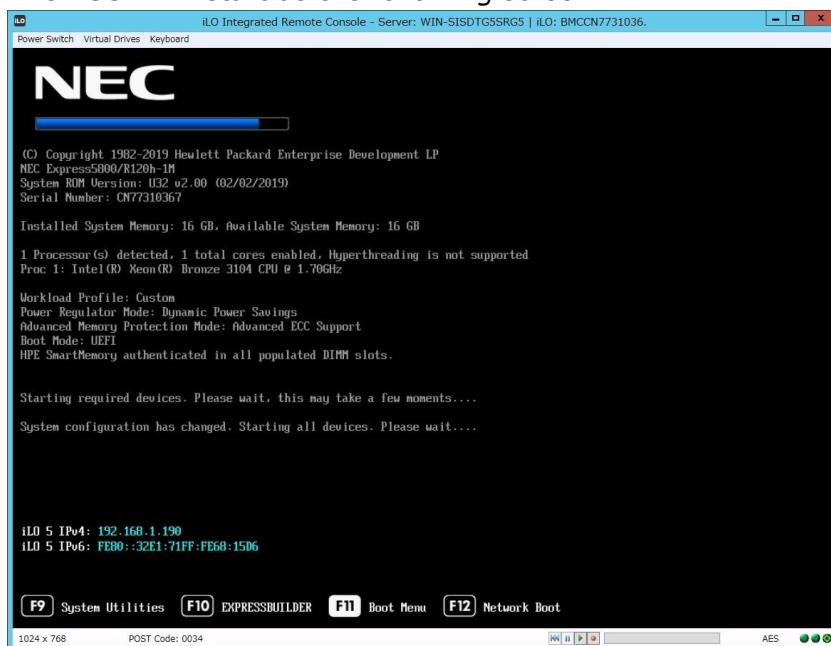
This document includes notice for using starter Pack DVD to update Firmware. Please see the following steps to update firmware directly by Starter Pack DVD without Windows and Linux OS environment.

- (1) Disable the secure booting.

Run **System Utilities**, and then proceed to **Secure Boot Settings** in **System Configuration > BIOS/Platform Configuration (RBSU) > Server Security**.

- (2) Power off and power on the server or restart the server by pressing <Ctrl>+<Alt>+<Delete> keys.

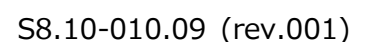
The POST will start as the following screen.



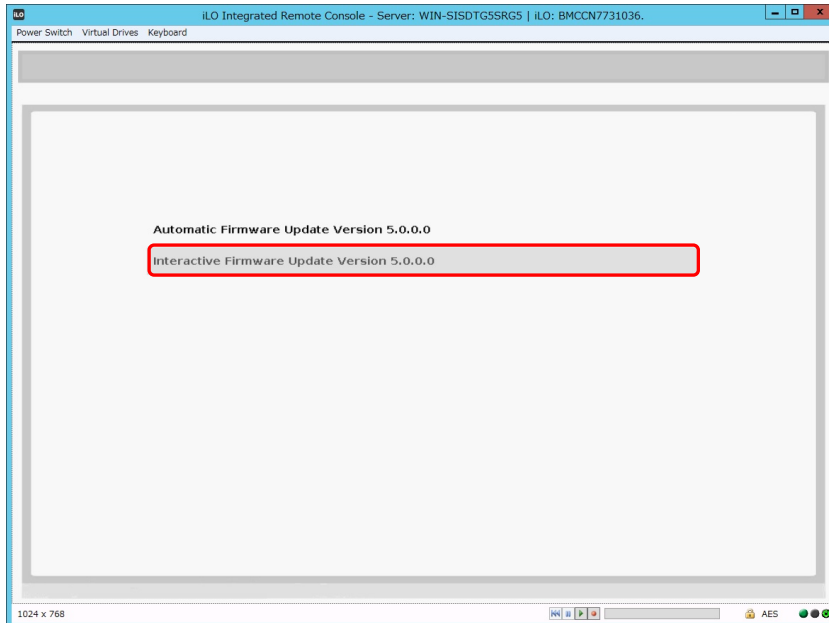
The following Boot Menu is shown.



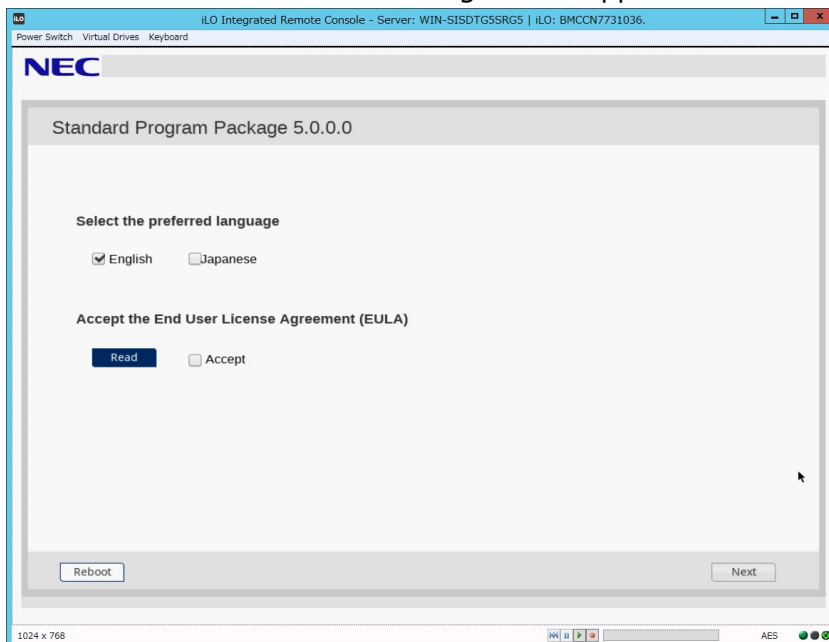
The Starter Pack DVD will start and the following menu is shown.



- (5) Choose **Interactive Firmware Update** by pressing <down> key and press <Enter> key.
- If no key is pressed within 10 seconds, be careful another update process will start automatically.
  - Customers using Express5800/R110j-1 be sure to select "Interactive Firmware Update" if System ROM v 2.00 (05/15/2019) is applied.



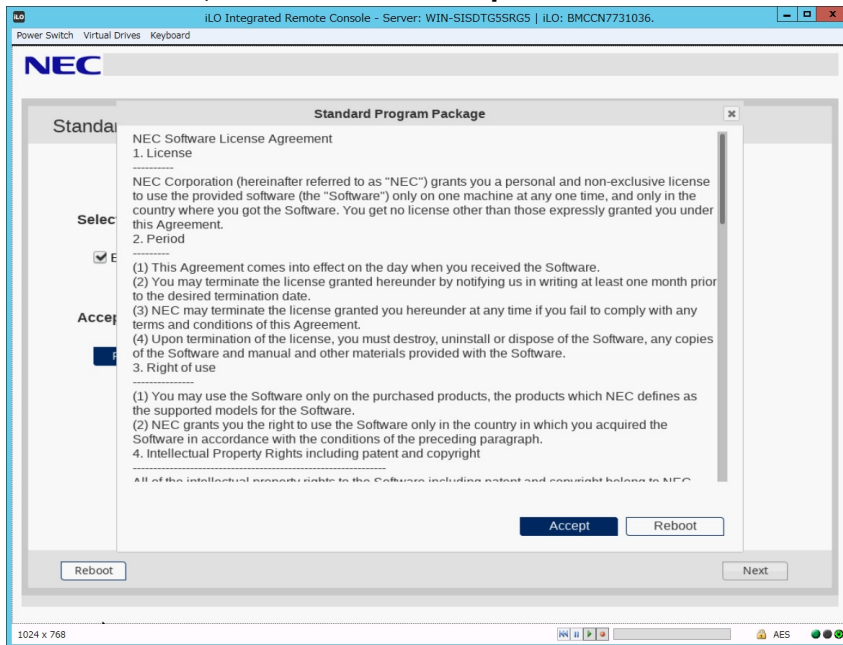
Wait for a while until the following screen appears.



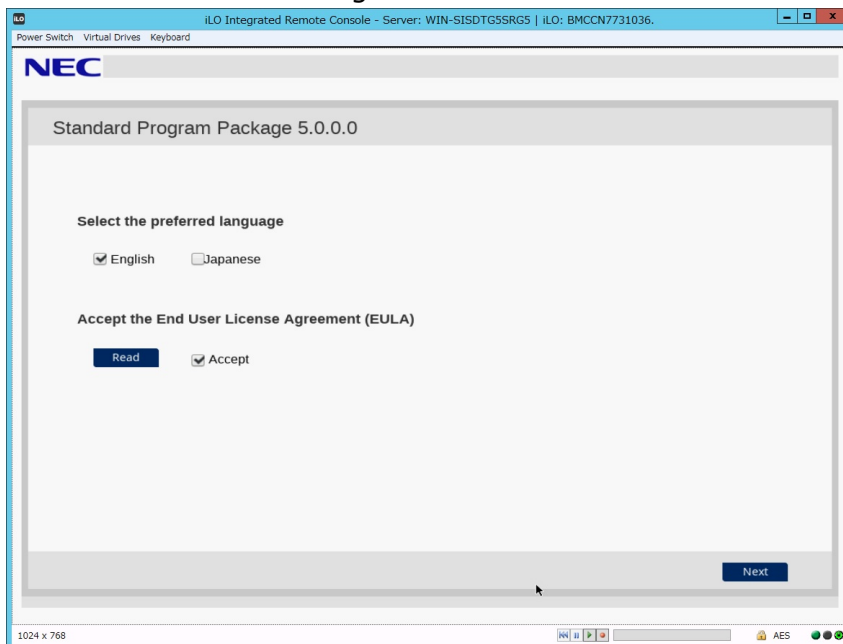
(6) Click **Read** under **Accept the End User License Agreement (EULA)**.

Dialog box will appear.

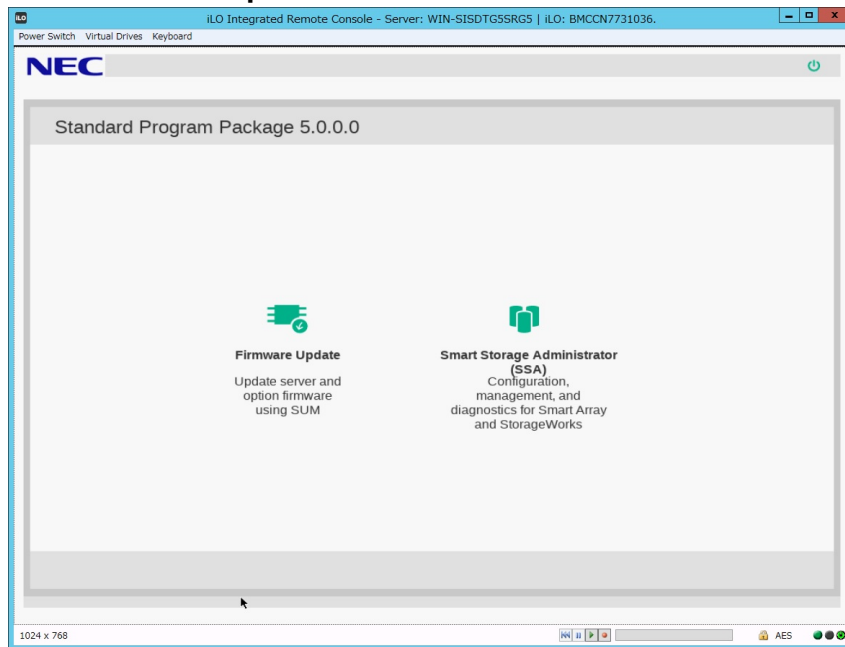
(7) Read the EULA, and then click **Accept**.



(8) Click **Next** on the lower right of the screen.

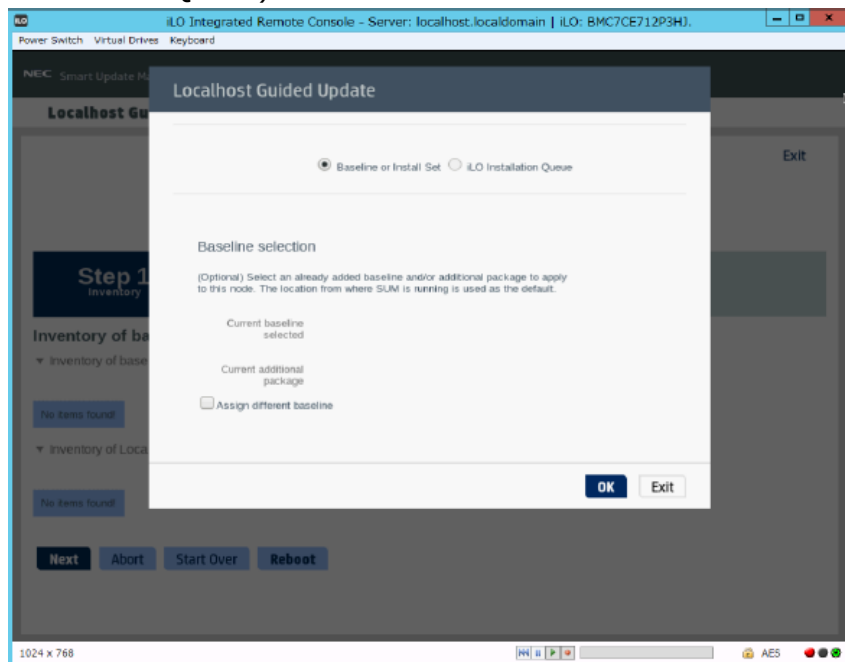


(9) Click **Firmware Update**.

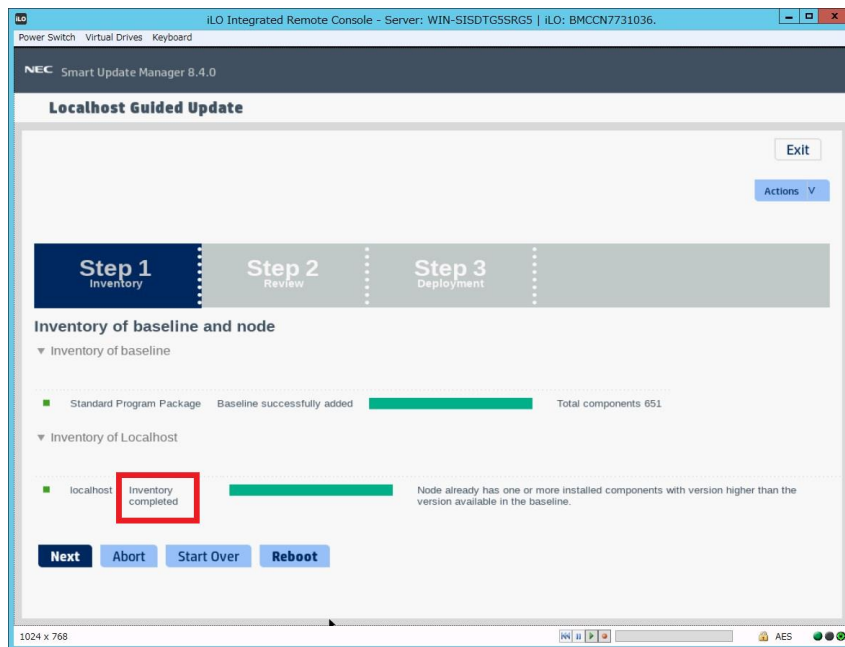


If the installation stops with an error, see troubleshooting.

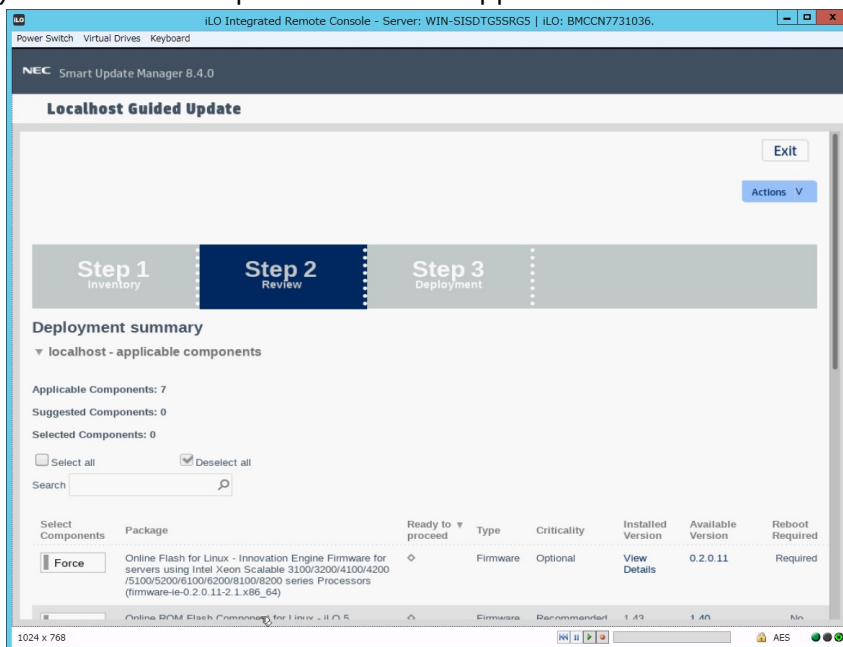
If the Localhost Guided Update Options window appears, check that "Baseline or Install Set" is selected, and click **OK**. (Do not select iLO Installation Queue).



The Localhost Guided Update screen will appear and the inventory process will begin. Wait for a while until "Inventory completed" message appears on the screen like the below.

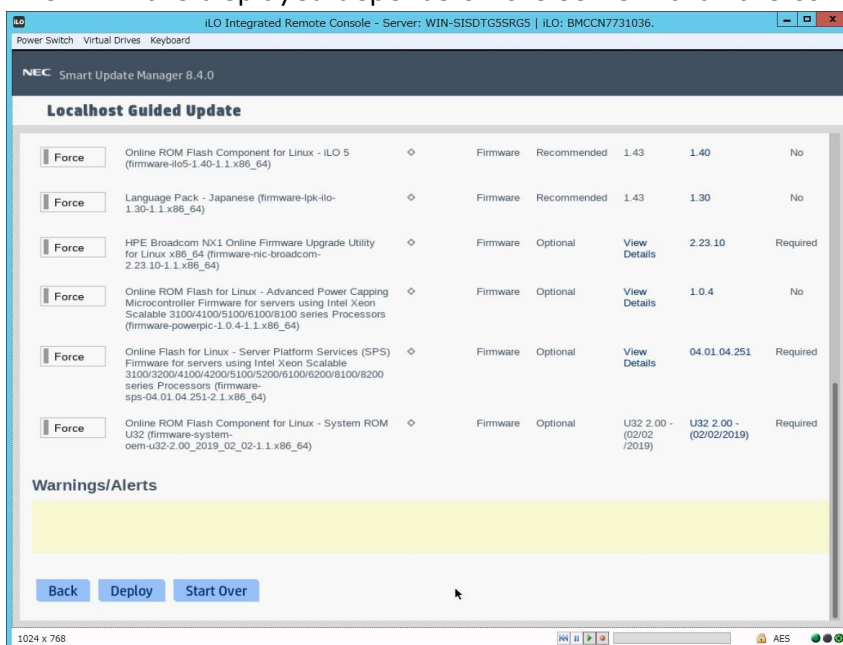


(10) Click **Next**. "Step 2 Review" will appear.



A list of firmware will appear.

The firmware displayed depends on the server hardware configuration.



The blue bar means that the firmware will be installed at step (12).

(11) Search for "Online ROM Flash Component for Linux - iLO5", and make sure status of the selected component.

If iLO5 is not selected, click "Select" or "Force" to change it to "Selected" or "Forced".



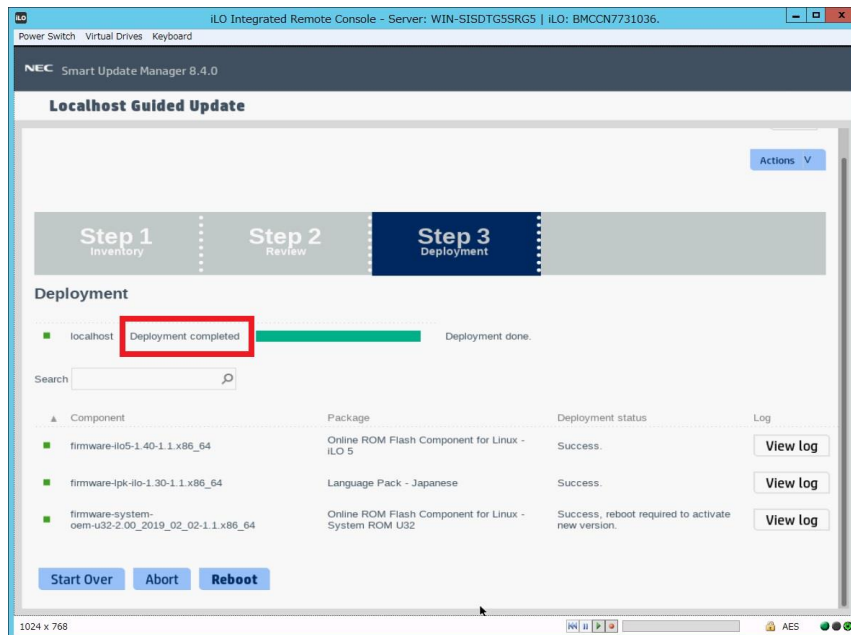
Do not change the selective state of other firmware by this step.

\* When downgrading the firmware, set to "Selected" or "Forced" manually.

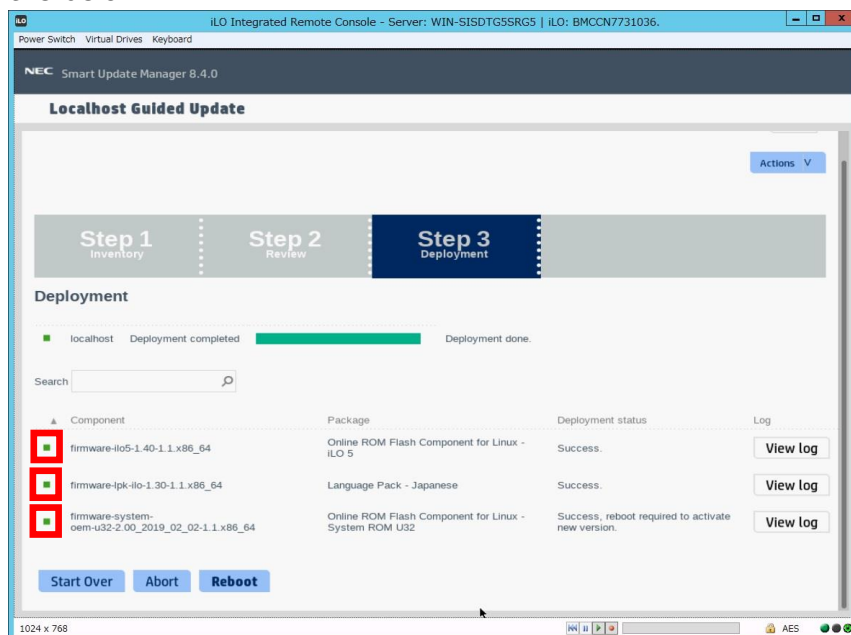


(12) Scroll the window if necessary, and then click **Deploy** on the lower left of the screen. "Step 3 Deployment" will start.

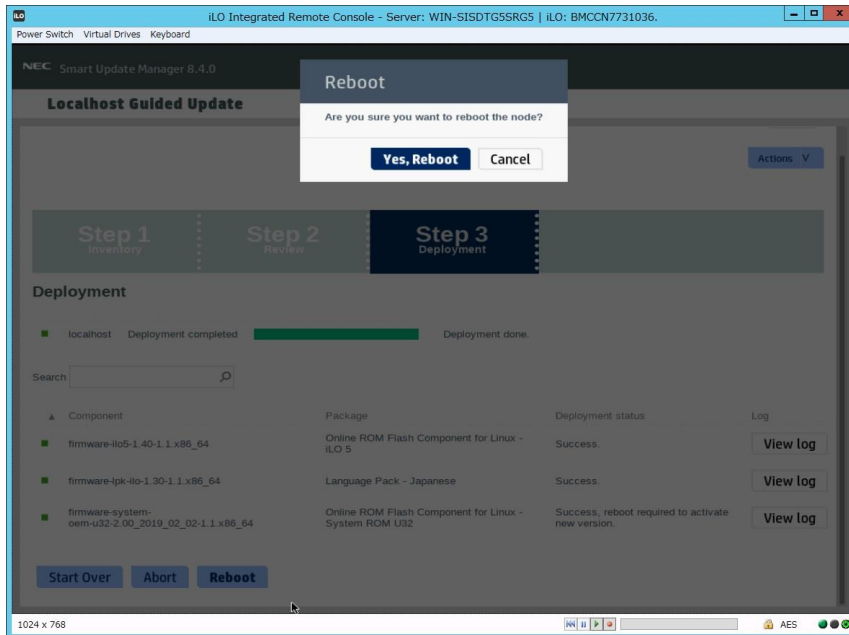
Wait for a while until "Deployment completed" message appears on the screen like the below.



(13) To confirm the success of updating, check that the status icons are green like the below.



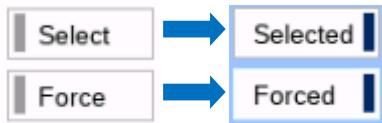
- (14) Eject the Starter Pack DVD from the drive, and then click **Reboot** on the lower left of the screen.



- (15) If the system ROM has been updated to the latest version after restarting and completing the POST (Power on Self Test), steps (16) to (20) are not necessary. Please proceed to step (21). To confirm the latest version, please refer to the release notes for the target system under "System ROM related" in the "Release Notes" section on the web page that publishes the Starter Pack. To confirm the current system ROM version, please follow these steps:
- (i) Log in to the iLO Web interface.
  - (ii) Confirm the "System ROM" item on the screen "Information > Overview > Server".
- (16) If the system ROM has not been updated to the latest version after reboot, please proceed to step (2) to (10) again and proceed to the "Step 2 Review" screen.

(17) Search for "Online ROM Flash Component for Linux - System ROM Uxx", and make sure status of the selected component.

If System ROM is not selected, click "Select" or "Force" to change it to "Selected" or "Forced".

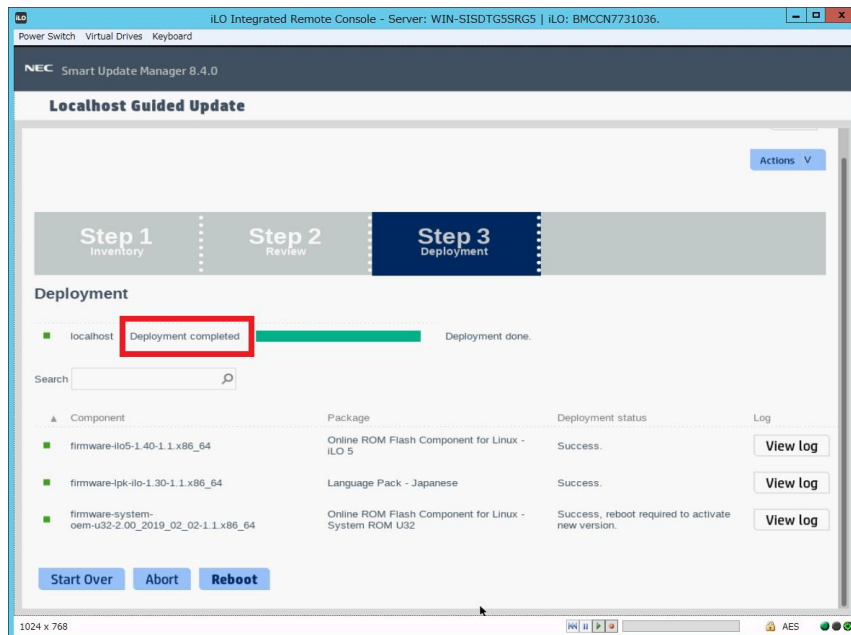


Do not change the selective state of other firmware by this step.

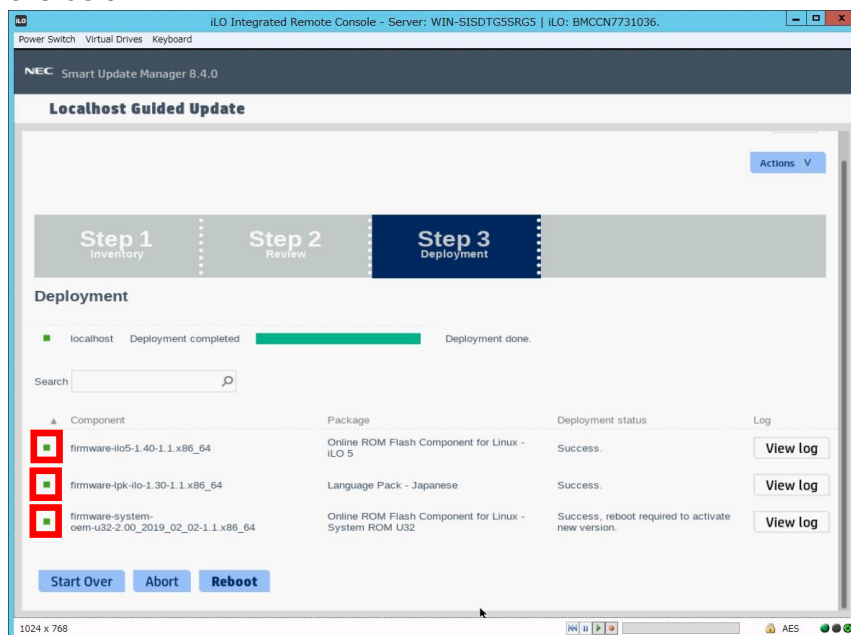
\* When downgrading the firmware, set to "Selected" or "Forced" manually.

(18) Scroll the window if necessary, and then click **Deploy** on the lower left of the screen. "Step 3 Deployment" will start.

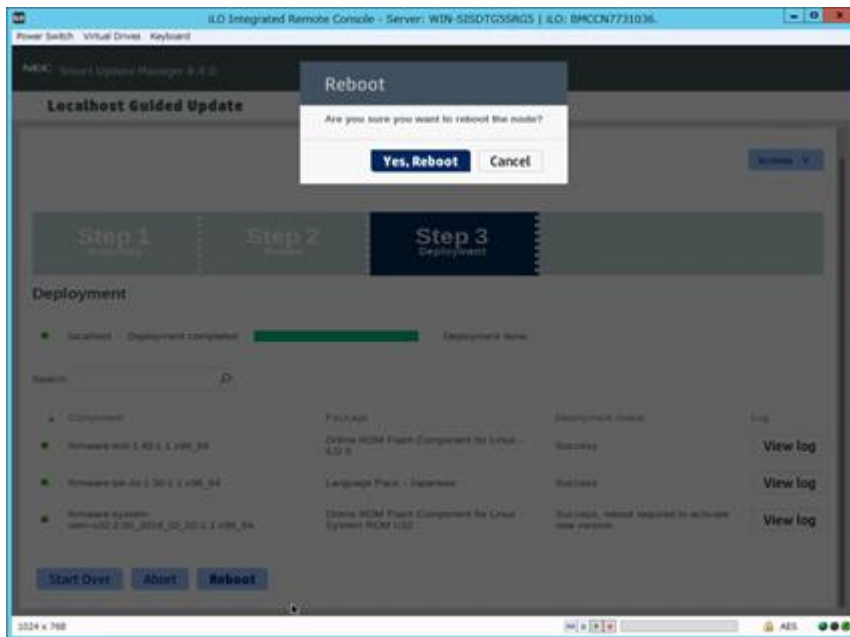
Wait for a while until "Deployment completed" message appears on the screen like the below.



(19) To confirm the success of updating, check that the status icons are green like the below.



(20) Eject the Starter Pack DVD from the drive, and then click **Reboot** on the lower left of the screen.



(21) Enable the secure booting if necessary.

The procedure is complete after the system restarts.

When Internal Slim DVD-ROM drive [N8151-137] or Internal DVD-Super Multi Drive [N8151-138] is used, the Starter Pack DVD can not be ejected after the system restarts. For details, see Troubleshooting [1. Starter Pack DVD cannot eject from the DVD drive].

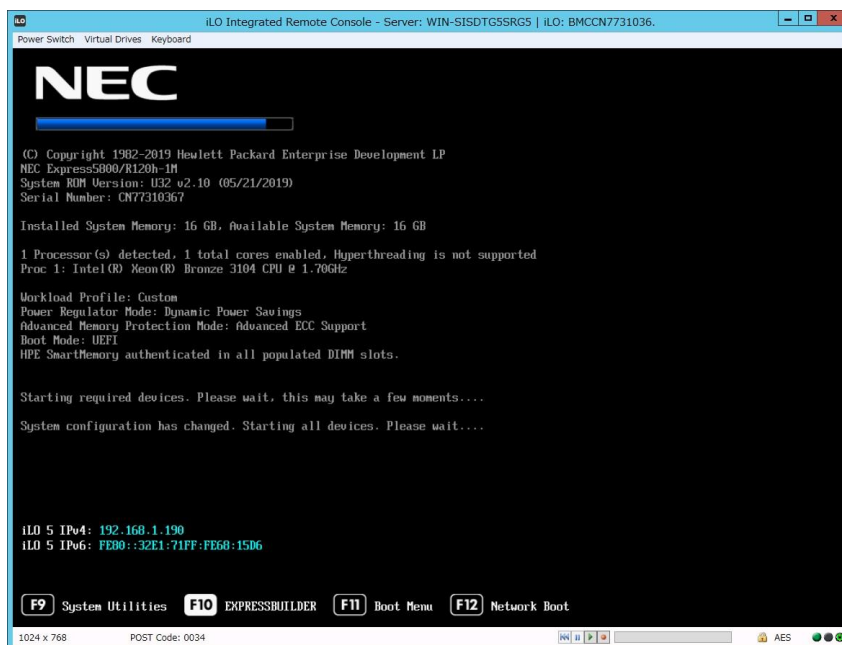
## Troubleshooting

### 1. Starter Pack DVD cannot eject from the DVD drive

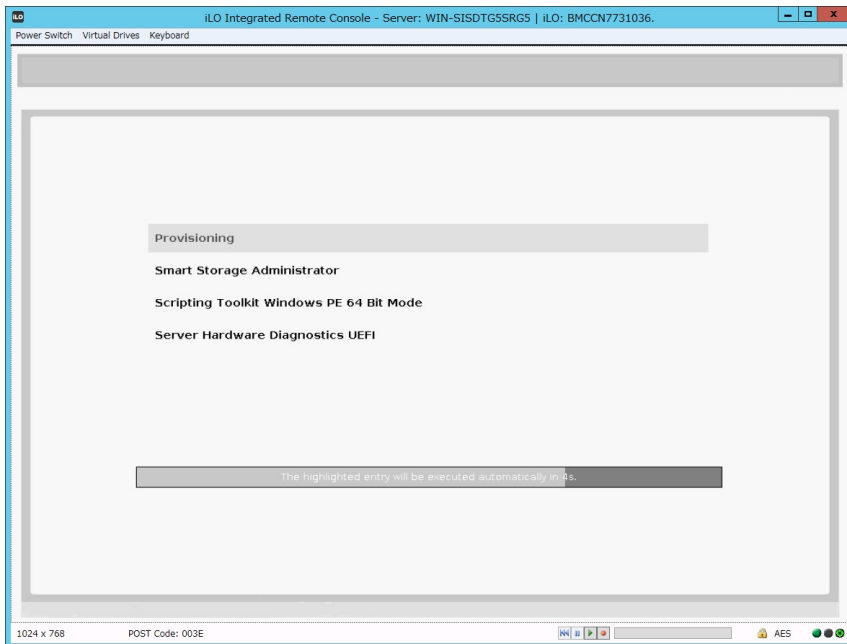
If the DVD eject button does not work after restarting the server, please see the following steps to eject the DVD.

- (1) Power off/on the server or restart the server by pressing <Ctrl> + <Alt> + <Delete> keys.

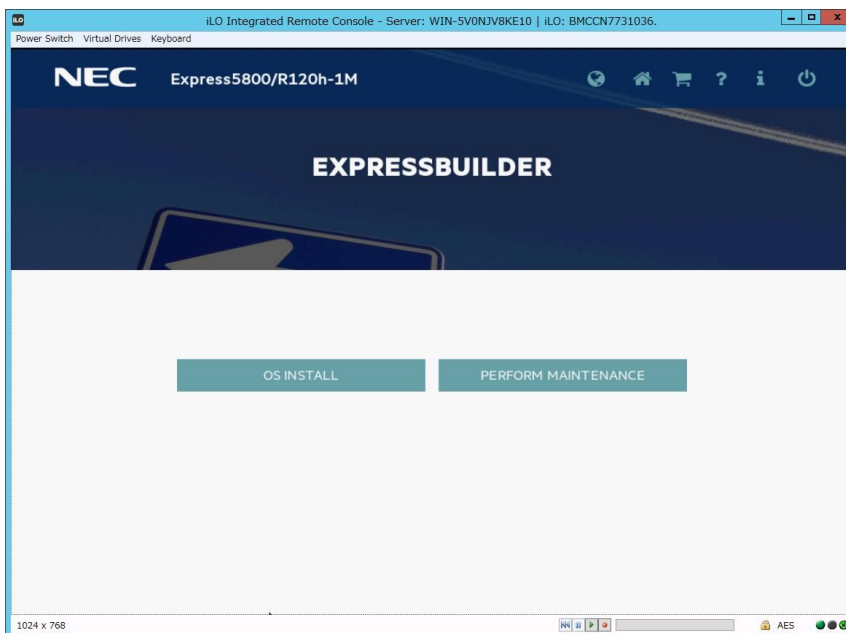
The POST will start as the following screen.



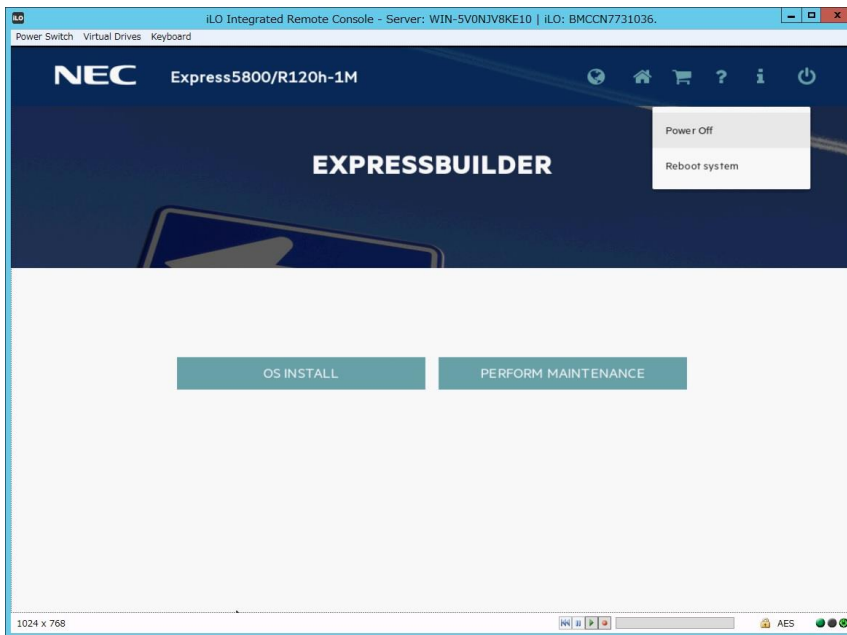
- (2) Press <F10> key during POST.  
The following screen will appear.



- (3) Choose **Provisioning**. If no key is pressed within 10 seconds, the Provisioning will start automatically.  
After a while, the following screen will appear.



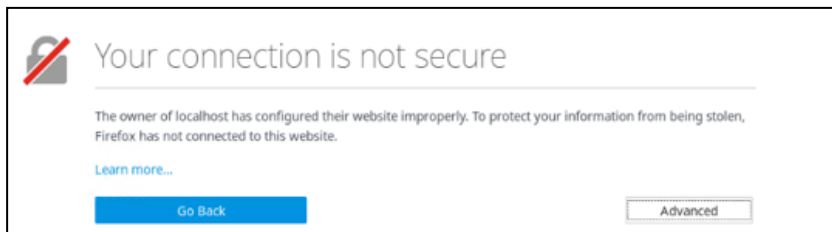
- (4) To eject the DVD, press the DVD eject button on the DVD drive.
- (5) To exit the EXPRESSBUILDER, click the power icon on the upper right and choose **Power off** or **Reboot system**.



The procedure is completed.

## 2. Installation stopped with "Your connection is not secure"

If the installation cannot proceed with the following error, follow the steps below.



- (1) Click the "Advanced" on the screen.
- (2) Click the "Add Exception..." on the screen.
- (3) On the pop-uped "Add Security Exception" screen, click the "Confirm Security Exception".

The procedure is completed.