

Steps to update firmware for Windows Server 2016/2019

In this document, it will provide supplementary information regarding firmware updates by the Starter Pack. In this version of the Starter Pack, when using the following options or onboard LAN on Windows Server 2016/2019 environment, Firmware updates cannot be performed. After the application of the Standard Program Package in the Installation Guide (Windows Server 2016 edition/Windows Server 2019 edition), Please see the following steps to update firmware directly by Starter Pack DVD.

<Windows Server 2016 environment>

- Target options, onboard LAN
 - N8104-171/172/173/175/176/178/179/180/181/182/184/185/186/193/194/195/206/209 LAN/LOM Card

 - R110j-1/R120h-1M/R120h-1M(2nd-Gen)/R120h-2M/R120h-2M(2nd-Gen)/R110j-1(2nd-Gen)/T120h/T120h(2nd-Gen)/T120h(3rd-Gen)/R120h-1E/R120h-1E(2nd-Gen)/R120h-1E(3rd-Gen)/R120h-2E/R120h-2E(2nd-Gen)/R120h-2E(3rd-Gen)/R110j-1M/R110k-1 Standard LAN

<Windows Server 2019 environment>

- Target options, onboard LAN
 - N8104-171/173/178/179/182/185 LAN/LOM Card

 - R110j-1/R120h-1M/R120h-1M(2nd-Gen)/R120h-2M/R120h-2M(2nd-Gen)/R110k-1 Standard LAN

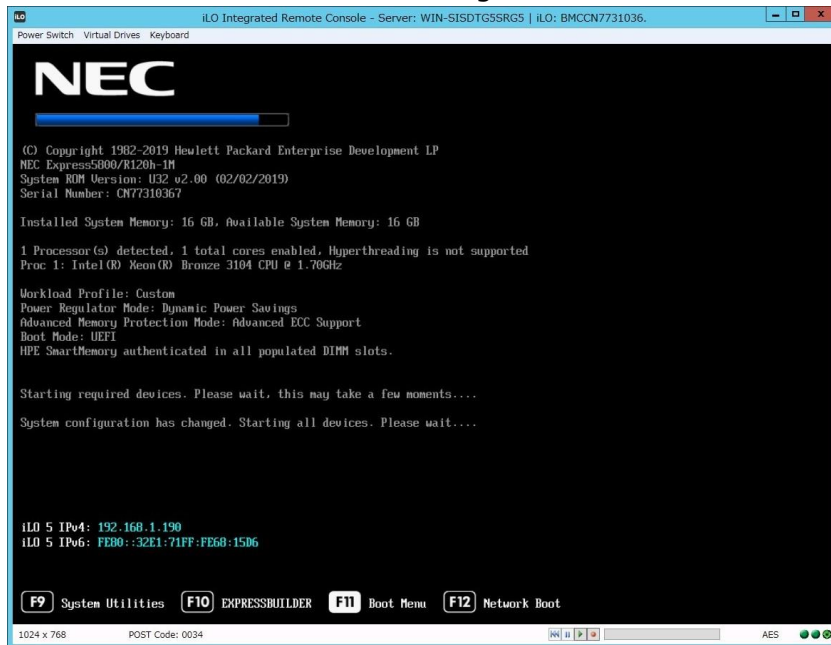
(1) Disable the secure booting.

Run **System Utilities**, and then proceed to **Secure Boot Settings** in **System Configuration > BIOS/Platform Configuration (RBSU) > Server Security**.

(2) When Windows(R) BitLocker(TM) function is set to "Enabled", install the System ROM after making the function "Disabled". Then make the function "Enabled" after install and reboot of the system. If you install the system ROM without making the function "Disabled", you may need the recovery password when you boot the system.

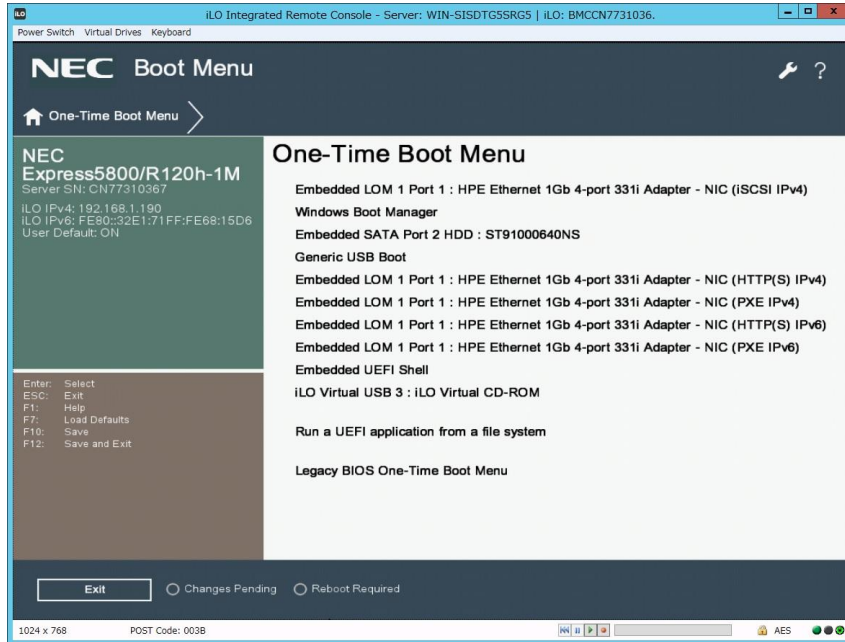
- (3) Power off and power on the server or restart the server by pressing <Ctrl>+<Alt>+<Delete> keys.

The POST will start as the following screen.



(4) Press <F11> key during the POST.

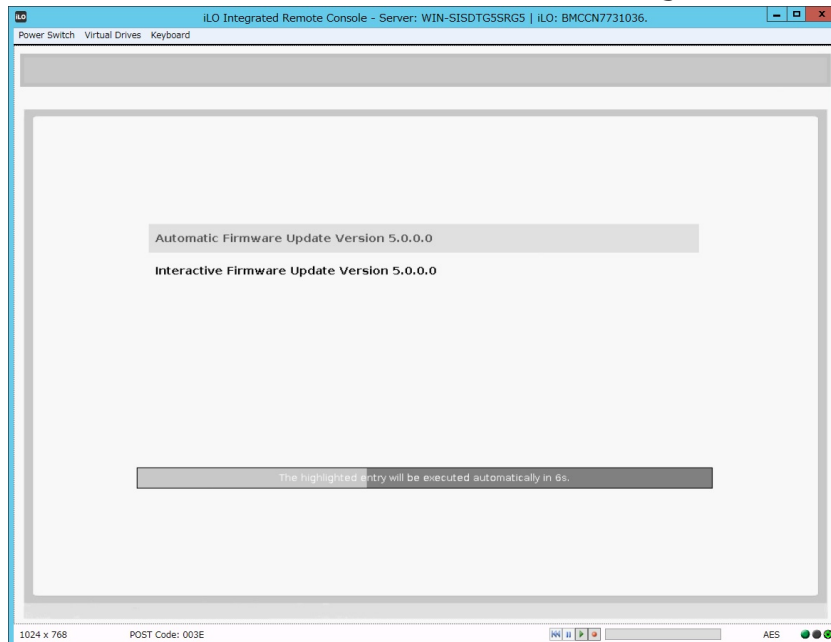
The following Boot Menu is shown.



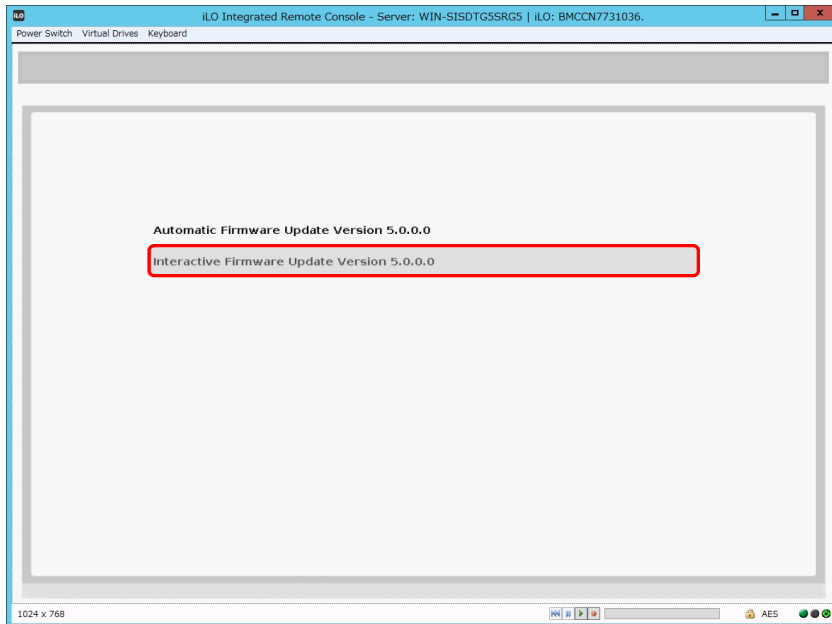
The list of Boot Menu will be changed depending on the system environment.

(5) Choose the DVD drive set in step (2) on the One-Time Boot Menu.

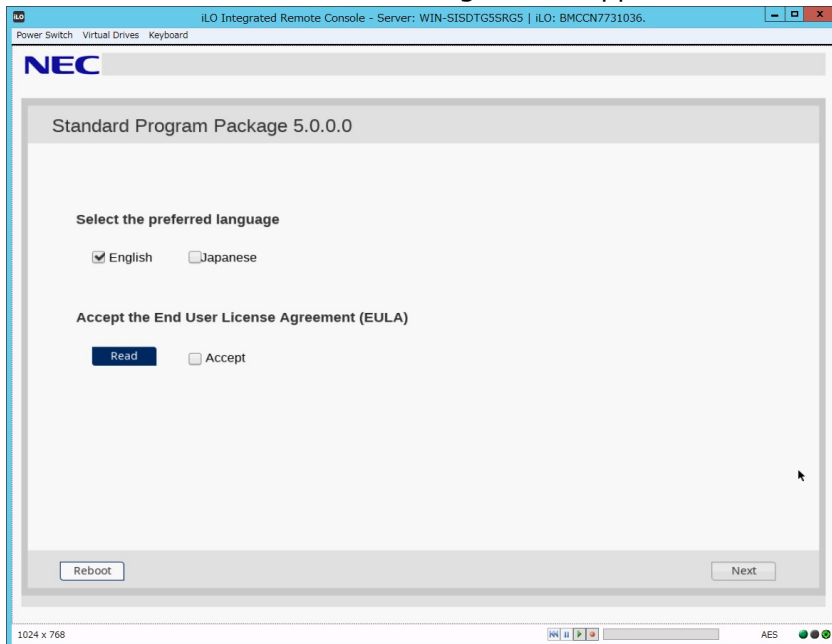
The Starter Pack DVD will start and the following menu is shown.



- (6) Choose **Interactive Firmware Update** by pressing <down> key and press <Enter> key.
- If no key is pressed within 10 seconds, be careful another update process will start automatically.



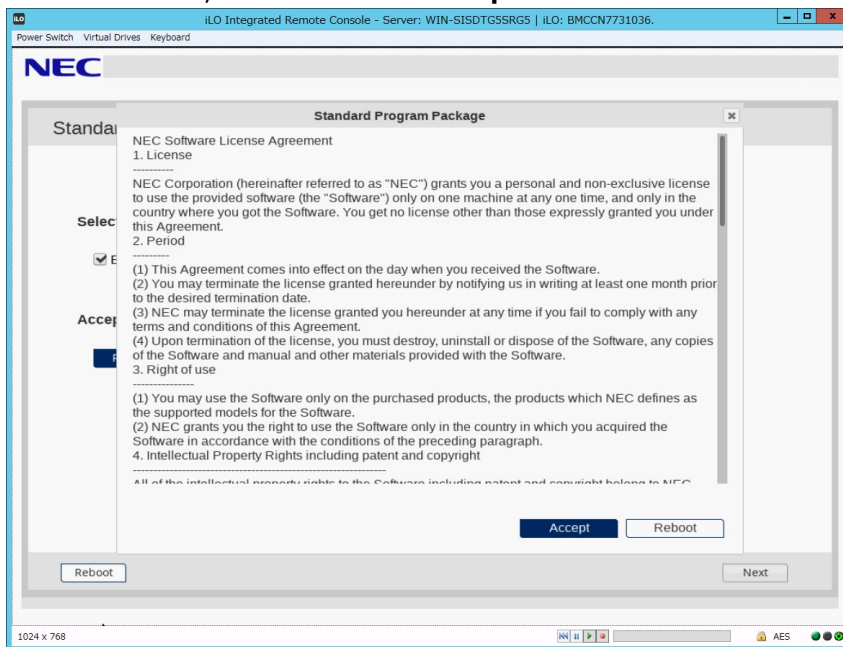
Wait for a while until the following screen appears.



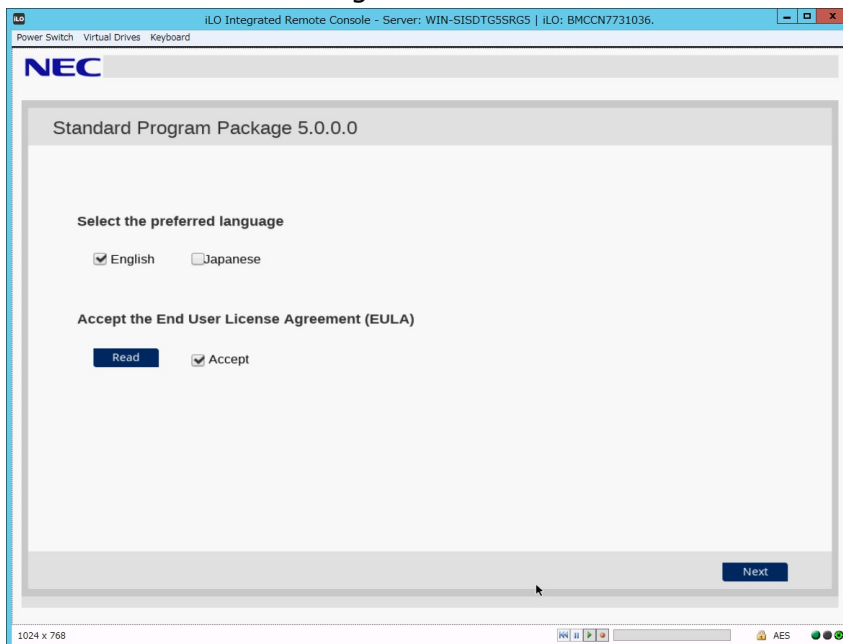
(7) Click **Read** under **Accept the End User License Agreement (EULA)**.

Dialog box will appear.

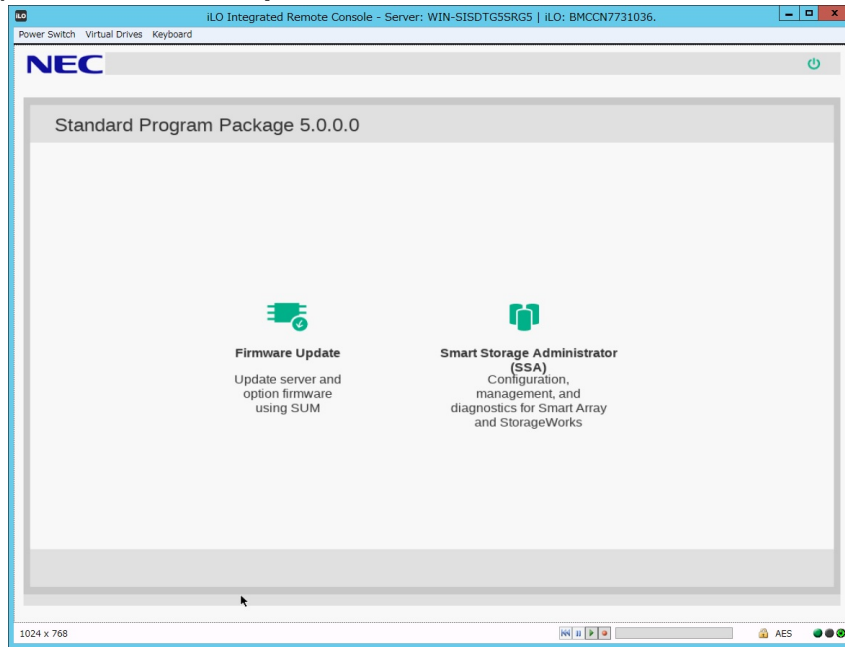
(8) Read the EULA, and then click **Accept**.



(9) Click **Next** on the lower right of the screen.

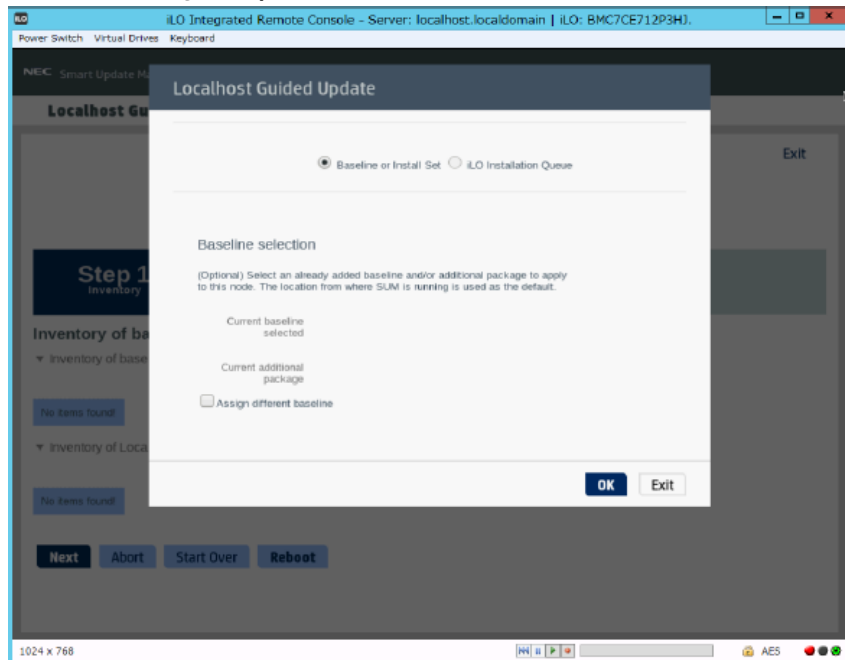


(10) Click **Firmware Update**.

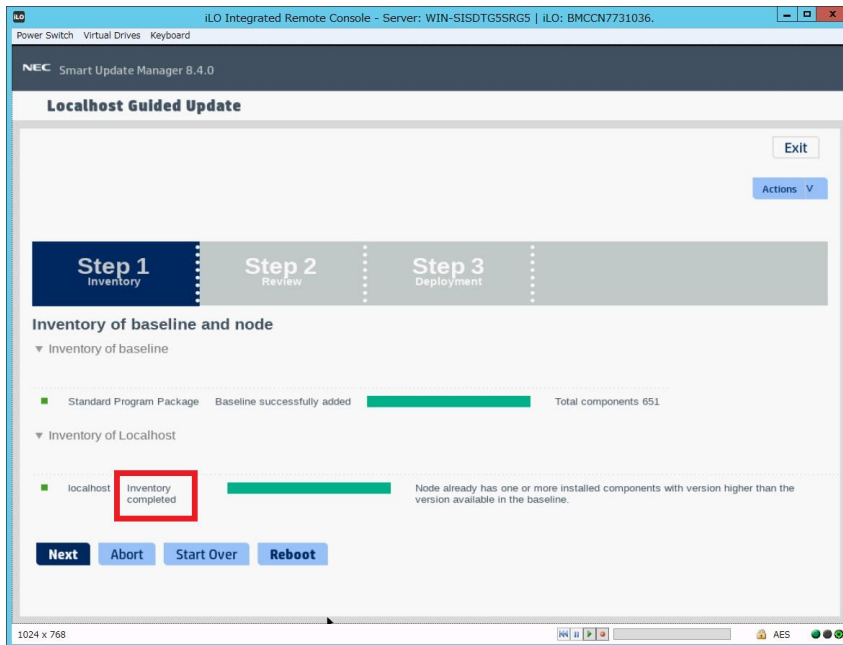


If the installation stops with an error, see troubleshooting.

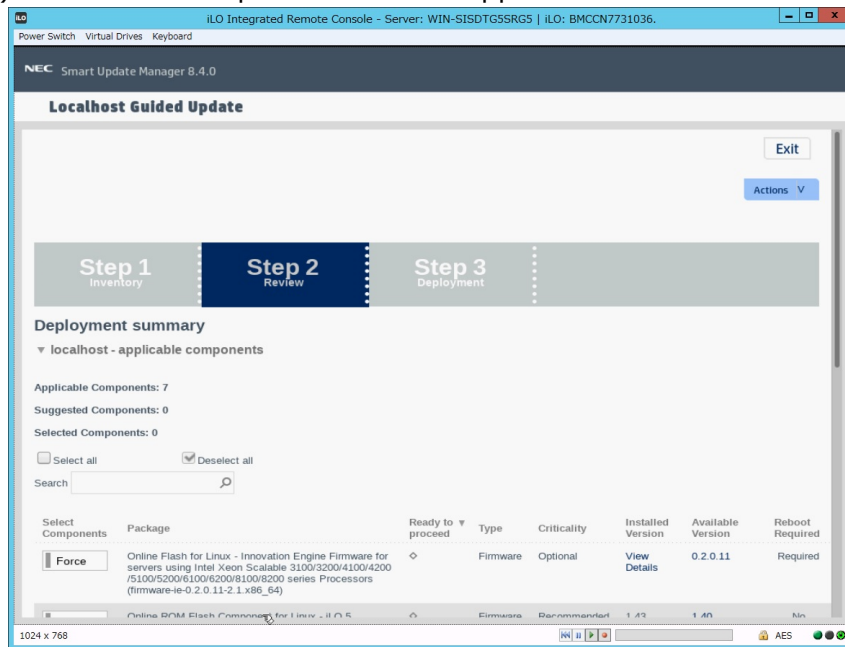
If the Localhost Guided Update Options window appears, check that "Baseline or Install Set" is selected, and click **OK**. (Do not select iLO Installation Queue).



The Localhost Guided Update screen will appear and the inventory process will begin. Wait for a while until "Inventory completed" message appears on the screen like the below.

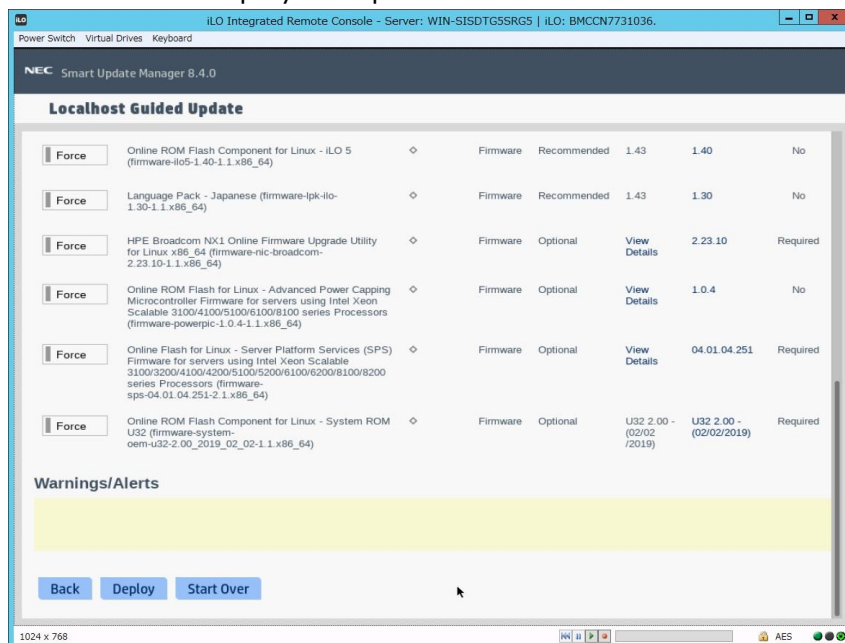


(11) Click **Next**. "Step 2 Review" will appear.



A list of firmware will appear.



The firmware displayed depends on the server hardware configuration.





The blue bar means that the firmware will be installed at step.

(12) Select only the firmware to be applied from the firmware list.

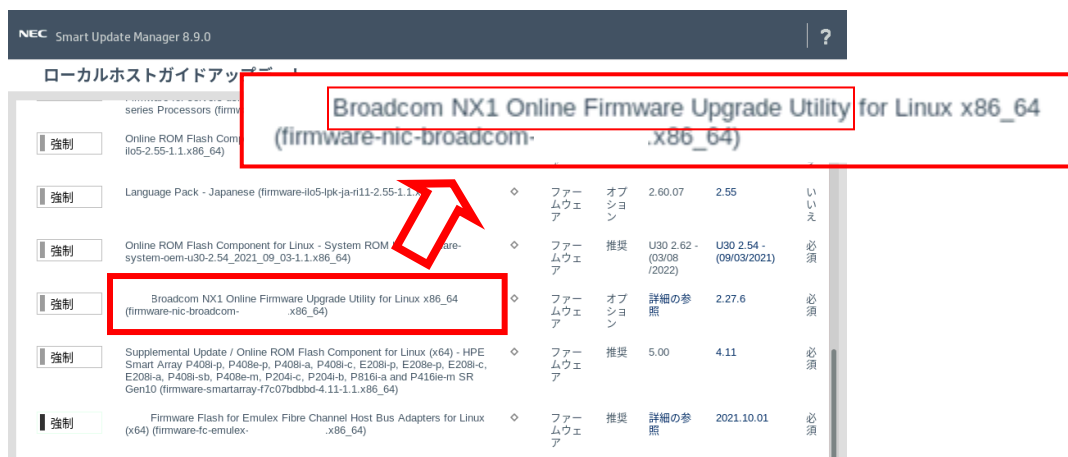
If not "Selected", click "Select" or "Force (gray)" on the left side and change it to "Selected" or "Forced (blue)". If any firmware other than the one to be applied is "selected" or "forced (blue)," click to change everything to "select" or "force (grey)."

 or The firmware will be updated.

 or The firmware will not be updated.

The firmware to be selected is as follows.

- N8104-171/178/179 LAN/LOM Card
- R110j-1/R120h-1M/R120h-1M(2nd-Gen)/R120h-2M/R120h-2M(2nd-Gen)/NS500Ri/R110k-1 Standard LAN



NEC Smart Update Manager 8.9.0

ローカルホストガイドアップ

強制	Online ROM Flash Component for Linux (firmware-ilo5-2.55-1.1.x86_64)						
強制	Language Pack - Japanese (firmware-ilo5-lpk-ja-r111-2.55-1.1.x86_64)	◇	ファームウェア	オプション	2.60.07	2.55	いいえ
強制	Online ROM Flash Component for Linux - System ROM (firmware-system-oem-u30-2.54_2021_09_03-1.1.x86_64)	◇	ファームウェア	推奨	U30 2.62 - (03/08/2022)	U30 2.54 - (09/03/2021)	必須
強制	Broadcom NX1 Online Firmware Upgrade Utility for Linux x86_64 (firmware-nic-broadcom-.x86_64)	◇	ファームウェア	オプション	詳細の参照	2.27.6	必須
強制	Supplemental Update / Online ROM Flash Component for Linux (x64) - HPE Smart Array P408i-p, P408e-p, P408i-a, P408i-c, E208i-p, E208i-c, E208e-a, P408i-sb, P408e-m, P204i-c, P204i-b, P316i-a and P416i-m SR Gen10 (firmware-smartarray-f7c07b0bbd-4.11-1.1.x86_64)	◇	ファームウェア	推奨	5.00	4.11	必須
強制	Firmware Flash for Emulex Fibre Channel Host Bus Adapters for Linux (x64) (firmware-fc-emulex-.x86_64)	◇	ファームウェア	推奨	詳細の参照	2021.10.01	必須

The target LAN/LOM card and standard LAN firmware includes the following keyword.

- **Broadcom NX1 Online Firmware Upgrade Utility**

- N8104-172/175/176/180/181/184/186/193/194/195/206/209 LAN/LOM Card
- R110j-1(2nd-Gen)/T120h/T120h(2nd-Gen)/T120h(3rd-Gen)/R120h-1E/R120h-1E(2nd-Gen)/R120h-1E(3rd-Gen)/R120h-2E/R120h-2E(2nd-Gen)/R120h-2E(3rd-Gen)/R110j-1M/NS300Ri/NS300Rj Standard LAN



The target LAN/LOM card and standard LAN firmware includes the following keyword.

- Intel Online Firmware Upgrade Utility

- N8104-173/182/185 LAN/LOM Card

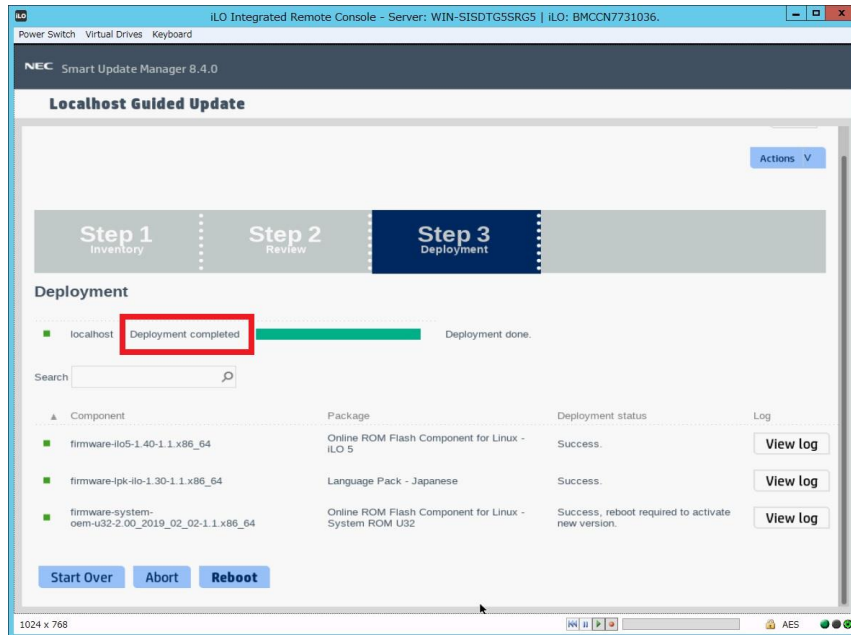


The target LAN/LOM card firmware includes the following keyword.

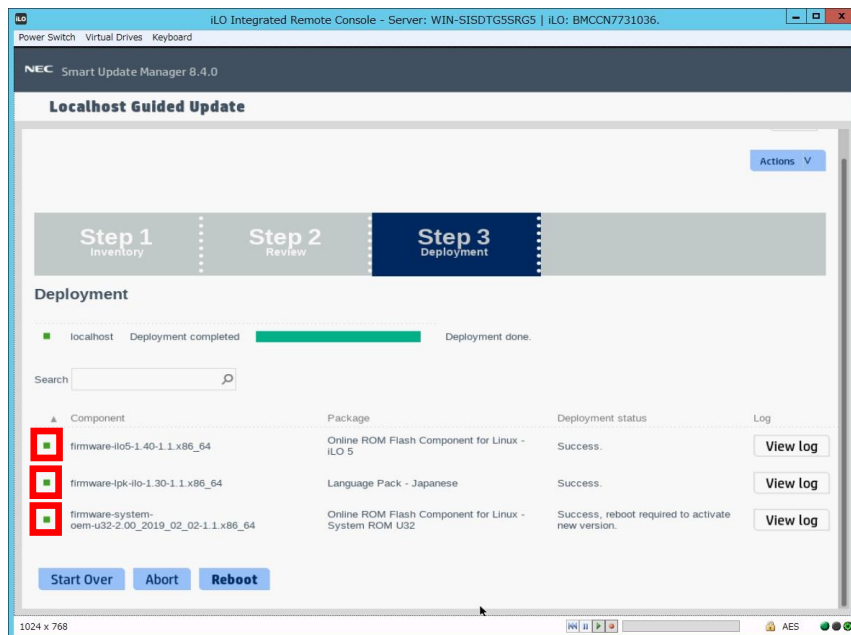
- QLogic NX2 Online Firmware Upgrade Utility

(13) Scroll the window if necessary, and then click **Deploy** on the lower left of the screen. "Step 3 Deployment" will start.

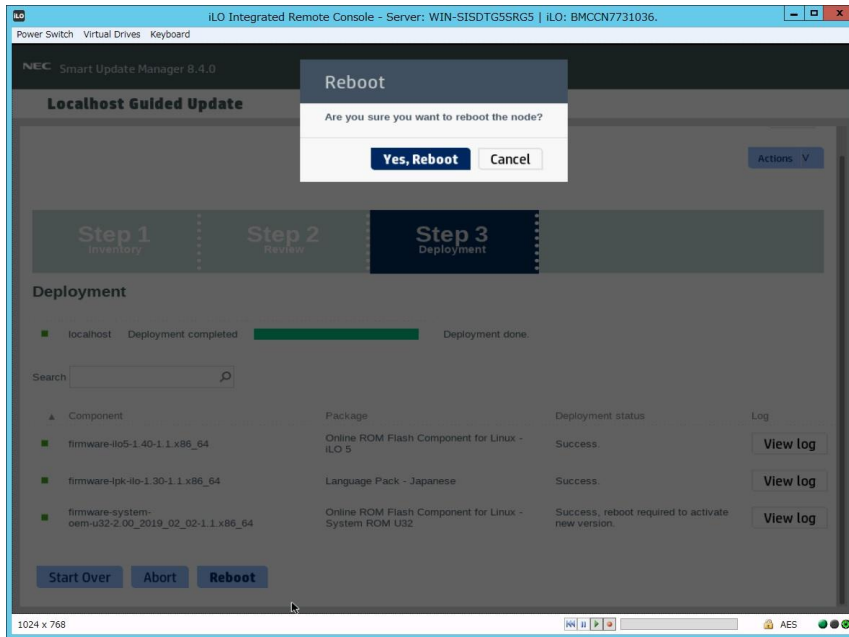
Wait for a while until "Deployment completed" message appears on the screen like the below.



(14) To confirm the success of updating, check that the status icons are green like the below.



(15) Eject the Starter Pack DVD from the drive, and the click **Reboot** on the lower left of the screen.



(16) Enable the secure booting if necessary.

(17) Enable the BitLocker(TM) if necessary.

The procedure is complete after the system restarts.

When Internal Slim DVD-ROM drive [N8151-137] or Internal DVD-Super Multi Drive [N8151-138] is used, the Starter Pack DVD can not be ejected after the system restarts. For details, see Troubleshooting [1. Starter Pack DVD cannot eject from the DVD drive].

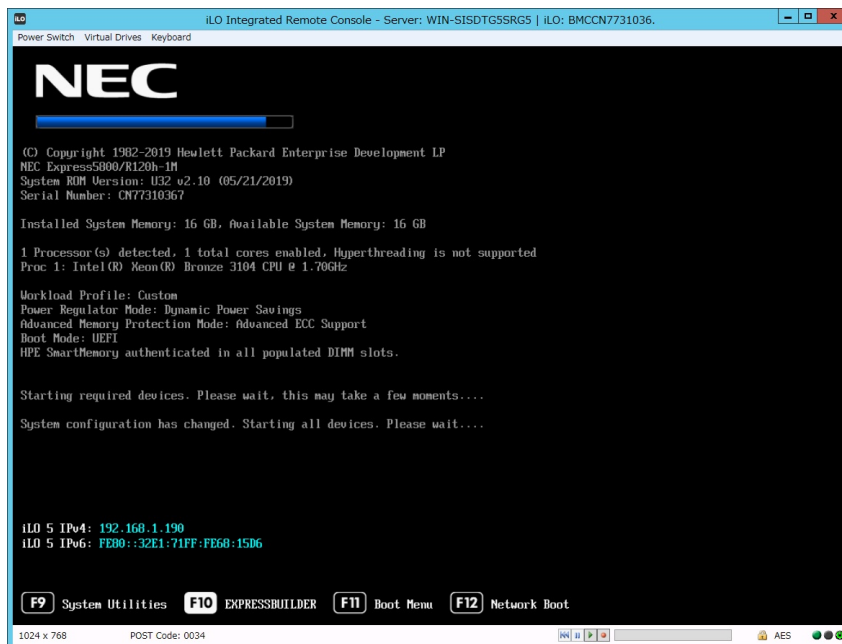
Troubleshooting

1. Starter Pack DVD cannot eject from the DVD drive

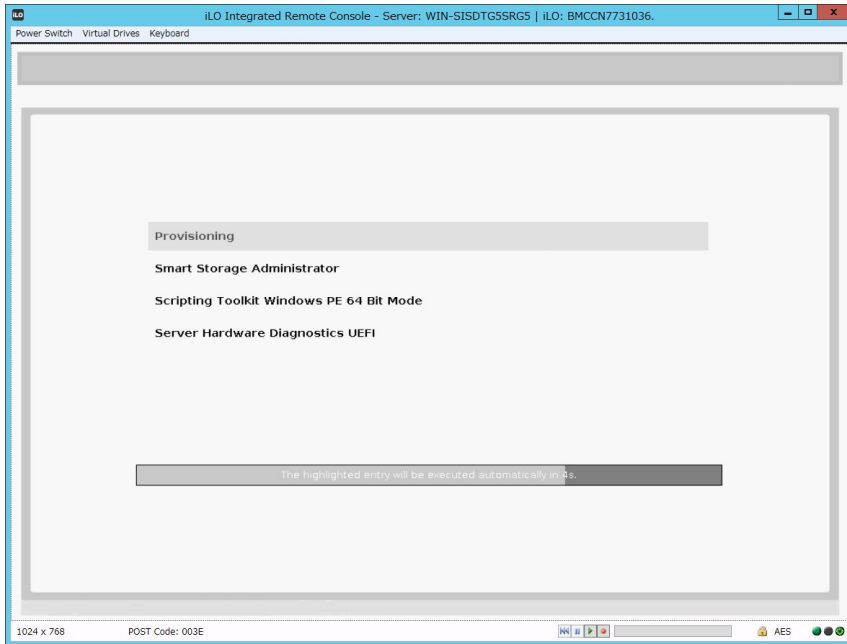
If the DVD eject button does not work after restarting the server, please see the following steps to eject the DVD.

- (1) Power off/on the server or restart the server by pressing <Ctrl> + <Alt> + <Delete> keys.

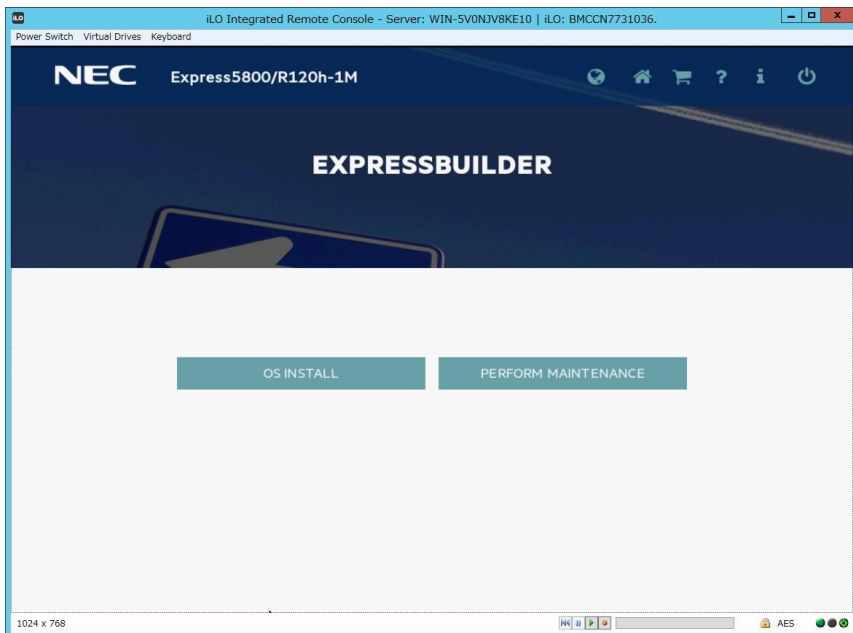
The POST will start as the following screen.



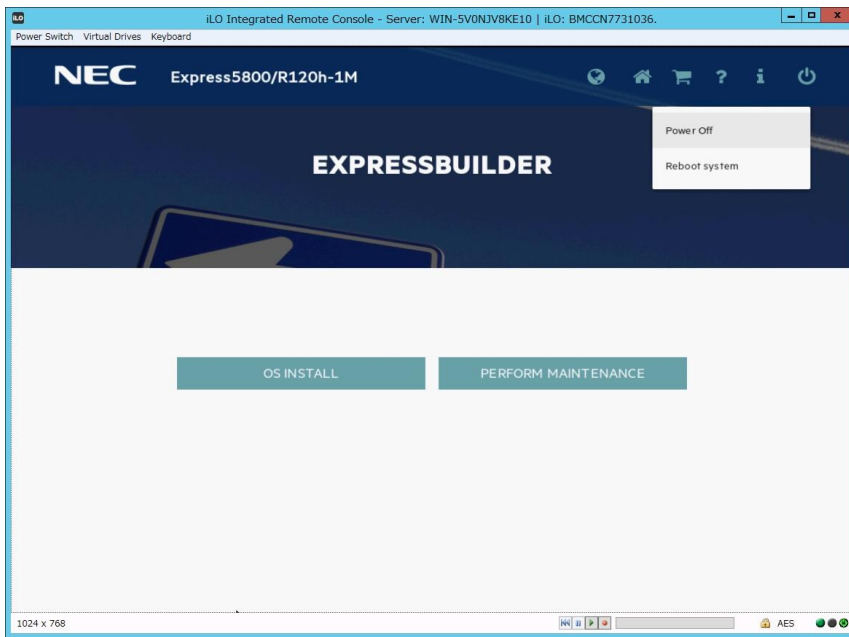
- (2) Press <F10> key during POST.
The following screen will appear.



- (3) Choose **Provisioning**. If no key is pressed within 10 seconds, the Provisioning will start automatically.
After a while, the following screen will appear.



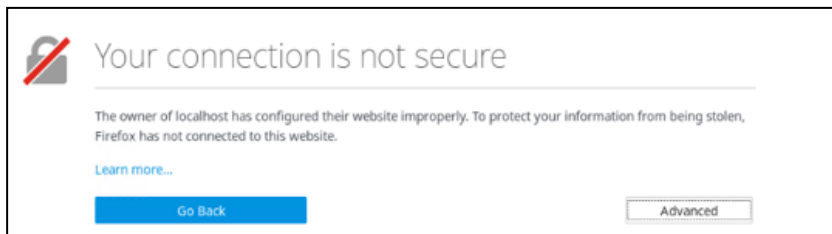
- (4) To eject the DVD, press the DVD eject button on the DVD drive.
- (5) To exit the EXPRESSBUILDER, click the power icon on the upper right and choose **Power off** or **Reboot system**.



The procedure is completed.

2. Installation stopped with "Your connection is not secure"

If the installation cannot proceed with the following error, follow the steps below.



- (1) Click the "Advanced" on the screen.
- (2) Click the "Add Exception..." on the screen.
- (3) On the pop-uped "Add Security Exception" screen, click the "Confirm Security Exception".

The procedure is completed.